

**CITY OF HOMER
INVITATION TO BID / BID DOCUMENTS**

**East Bunnell Avenue Storm Drain
Rehabilitation Project 2016**



**PREPARED BY:
CITY OF HOMER – PUBLIC WORKS DEPARTMENT
3575 HEATH STREET
HOMER ALASKA 99603
907-235-3170**

INVITATION TO BID
By the City of Homer, Alaska, for the
East Bunnell Avenue Storm Drain Rehabilitation Project 2016

Sealed bids for the **East Bunnell Avenue Storm Drain Rehabilitation Project 2016** will be received at the Office of the City Clerk, 491 East Pioneer Avenue, Homer, Alaska, until **2:00 p.m. Thursday, December 22nd, 2016**, at which time they will be publicly opened and read. The time of receipt will be determined by the City Clerk's time stamp. Bids received after the time fixed for the receipt of the bids shall not be considered. All bidders must submit a City of Homer Plan Holders Registration form to be on the Plan Holders List and to be considered responsive. Plan holder registration forms and Plans and Specifications are available online at <http://www.cityofhomer-ak.gov/rfps>

The City of Homer local bidder's preference requirements and State of Alaska prevailing wage rates will apply. The work includes, but is not limited to the following:

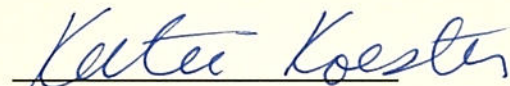
Furnish and Install approximately 1176 Lineal Feet (LF) of Cured-In-Place-Pipe (CIPP) lining within 18" and 36" CMP storm drain piping located at East Bunnell Avenue, City of Homer. Project scope includes, but is not limited to, mobilization and demobilization of equipment, traffic control, pre and post television inspection, and Storm Drain flow control as outlined within the bidding documents. The City of Homer Standard Construction Specifications also apply where applicable.

Please direct all technical questions regarding this project to: Dan Gardner, City of Homer, Public Works Department, 3575 Heath Street, Homer, Alaska 99603 (907) 235-3170

An electronic copy of Plans and Specifications is available on the City's website <http://www.cityofhomer-ak.gov/rfps> or you may purchase hard copies at the Office of the City Clerk upon payment of \$170 per set (\$200 for overnight delivery). City of Homer Standard Construction Specifications 2011 Edition (containing general contract provisions) may be downloaded from the City's web site. All fees are non-refundable. The City of Homer reserves the right to accept or reject any or all bids, to waive irregularities or informalities in the bids, and to award the contract to the lowest responsive bidder.

DATED this 22nd day of November, 2016

CITY OF HOMER


Katie Koester, City Manager

Publish: Homer News December 1 and 8, 2016
Alaska Dispatch News December 4 and 11, 2016

Fiscal Note: 151-0001

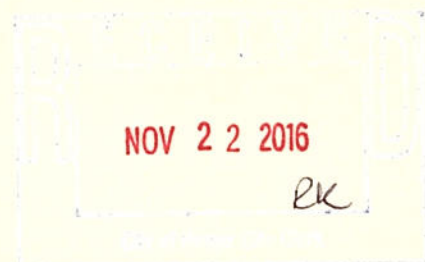


Table of Contents

East Bunnell Avenue Storm Drain Rehabilitation Project 2016

Bid Advertisement;

East Bunnell Avenue Storm Drain Rehabilitation Project 2016

	Page(s)
I. Scope of Services	<i>IB-1</i>
II. General Bidding Requirements	<i>IB-1- IB-2</i>
III. Instructions to Bidders	<i>IB-2 IB-5</i>
IV. Bid Schedule	
Part A	
Bid Form	<i>BS-1</i>
Bid Bond	<i>BB-1</i>
Part B	
1. Addenda Acknowledgement	<i>AA-1</i>
2. EEO – 1 Certification	<i>EEO-1 EEO-2</i>
3. Equal Employment Opportunity Clause	<i>OC1-OC2</i>
V. Proposed Contract Documents	<i>C-1 - C-6</i>
VI. Project Schedule	<i>S-1</i>
VII. Special Provisions	<i>16 Sheets</i>
Sections 808, 809,810, 811	
VIII. Appendices	
Appendix A – CMP Pipe Photos	
Local Bidding Preference	<i>Q1-Q3</i>
IX. Submittals	
XI. State of Alaska Labor Rates	

East Bunnell Avenue Storm Drain Rehabilitation Project 2016

The City of Homer, Alaska is requesting bid proposals from qualified firms and individuals for the project described herein.

I. Scope of Services

The proposed work is located within the Homer city limits and is illustrated on the plans entitled:

East Bunnell Avenue Storm Drain Rehabilitation Project 2016

The project consists of furnishing all labor, materials, equipment, tools, supervision and other facilities necessary for the performance of the work described herein and shown on the project drawings. The work includes but is not limited to the following:

Furnish and Install approximately 1176 Lineal Feet (LF) of Cured-In-Place-Pipe (CIPP) lining within 18" and 36" CMP storm drain piping located at East Bunnell Avenue, City of Homer. Project scope includes, but is not limited to, mobilization and demobilization of equipment, traffic control, pre and post television inspection, and Storm Drain flow control as outlined within the bidding documents. The City of Homer Standard Construction Specifications also apply where applicable.

II. General Bidding Requirements

The work must be performed by a Contractor skilled and regularly engaged in the general class or type of work called for under the Contract. The bidder must have a current contractor's license issued by the State of Alaska. The license must apply to the work described in the Invitation to Bid.

The City of Homer Standard Construction Specifications, 2011 Edition, shall supplement the project plans. A copy of the Homer Standard Construction Specifications (S.C.S.) may be obtained at the Office of the City Clerk, 491 E. Pioneer Ave., Homer, Alaska 99603. The cost for S.C.S. is per set is \$50.00. Persons requesting the sets by mail must include an additional \$25.00 for shipping.

This project is covered by the State of Alaska, Laborer's and Mechanic's Minimum Rates of Pay, Title 36 Public Contracts, (AS 36.05 & 36.10) **Pamphlet 600 Issue 33, Effective September 1st 2016**. It is the responsibility of the bidder to determine the current rates of pay required and to submit the proper certified payrolls to the State Department of Labor.

Performance and Payment bonds in the amount of One Hundred Percent 100% of the bid amount are required.

All bidders must submit a City of Homer Plan Holders Registration form to be on the Plan Holders List and to be considered responsive. Plan holder registration forms and Plans and Specifications are available online at <http://www.cityofhomer-ak.gov/rfps>

Bids must be submitted on the Bid Form and be received until will be received at the office of the City Clerk, City Hall, City of Homer, 491 East Pioneer Avenue, Homer, Alaska, until **2:00 PM December 22th 2016**. A bid bond is required. Cashier checks in an amount equal to five percent (5%) of the bid are acceptable. Surety bonds are acceptable.

The City of Homer has a two-part bid process, Part A and Part B. Each portion of the bid must be submitted in separate envelopes. At the bid opening, Part B is opened first and must be complete and regular or Part A will not be opened and the bid will be rejected.

Part A of the bid contains the Bid Form, the Bid Bond and the Power of Attorney (if needed). Part A must be submitted separately in an envelope marked Part A.

Part B of the bid contains the 1) Addenda Acknowledgment, 2) EEO-1 Certification, 3) Equal Employment Opportunity Clause. Part B must be submitted separately in an envelope marked Part B.

Modification by facsimile or e-mail of Bids already submitted, will be considered if received prior to the time fixed in the Invitation to Bid. Modifications shall indicate the amount of the revised Bid and shall be signed by a properly authorized agent, officer, or partner.

III. Instruction to Bidders

The City of Homer reserves the right to accept or reject any or all proposals, to waive irregularities or informalities in the proposals, and to award the contract to the bidder that best meets the criteria stated below.

A. Qualification of Bidders

It is the intention of the City of Homer to award this contract to the lowest responsible, responsive Bidder who furnishes satisfactory evidence they have the requisite experience, ability and sufficient capital, facilities and plant to prosecute the work successfully (and properly) and to complete it within the time allowed in the Contract at the least cost to the City of Homer for dollars spent for value received.

If the signature on the Bid is by an agent, other than an Officer of a corporation or a member of a Co-partnership, a Power of Attorney must either be on file with the City Clerk prior to the Bid opening or submitted with the Bid in Part B.

B. Taxes

Attention is directed to the requirements of the General Conditions regarding the payment of taxes. All taxes that are lawfully assessed against Owner or Contractor in connection with the work shall be paid by the Contractor. The Bid prices shall include all such taxes.

The City of Homer is exempt from local sales taxes. The Contractor shall not include sales tax markup in his bid. However, in order to recoup sales tax the Contractor might pay at local vendors, the Contractor must secure a Tax Exempt card from the Kenai Peninsula Borough Tax Department.

C. Familiarization With The Work

Before submitting a Bid, each prospective Bidder shall familiarize themselves with the work, the site logistics, labor conditions and all laws, regulations and other factors affecting performance of the work. The Contractor shall carefully correlate his observations with the requirements of the Contract Documents and otherwise satisfy himself of the expense and difficulties attending performance of the work. The submission of a Bid shall constitute an acknowledgement that the Bidder has thoroughly examined and is familiar with the Contract Documents and the provisions thereof. The failure or neglect of a Bidder to receive or examine any of the Bid Documents shall in no way relieve the bidder from any obligations with the respect to their Bid or to the Contract. Misinterpretation or a reputed lack of knowledge concerning the Bid will not serve as a basis for a claim for additional compensation.

1. Site Conditions

Each Bidder shall visit the site (or sites) of the Work and completely inform himself relative to construction hazards and procedures, the availability of lands, the character and quantity of surface and subsurface materials and utilities to be encountered, the arrangement and conditions of existing structures and facilities, the procedure necessary for maintenance of uninterrupted operations of existing facilities, the character of construction equipment and facilities needed for performance of the work, and facilities for transportation, handling and storage of materials and equipment. All such factors shall be properly investigated and considered in the preparation of the Bid.

D. Interpretation of Bid Documents

All questions about the meaning or intent of the Contract Documents shall be submitted, in writing, to the Office of the Project Manager of Public Works, 3575 Heath St. Homer Alaska, 99603. Replies will be issued by Addenda mailed or delivered to all parties recorded by the City Clerk's Office as having received the Bidding documents. The City of Homer will not be held responsible for questions received less than (7) days prior to the date of opening of Bids. Only questions answered by formal written Addenda will be binding. Oral and other interpretations or clarifications will be without legal effect. No questions will be answered the day of the bid due date.

The Bid shall contain an acknowledgement of receipt of all Addenda, the numbers of which shall be filled in on the Addendum Form, properly signed by the Bidder and placed in envelope B.

It shall be the Bidder's responsibility to inquire as to addenda issued. Failure to include the Addenda Form in envelope B shall result in the Bid being rejected as non-responsive.

E. Bid Bond Guarantee

Each Bid shall be accompanied by a Bid Bond duly completed on the suggested form provided by a guaranty company authorized to carry on business in the State of Alaska, along with a General Power of Attorney form, if applicable, for payment to the City in the sum of five percent (5%) of the total amount of the Bid. Failure to include the Bid Bond in envelope A of the Bid shall result in the Bid being rejected as non-responsive.

The amount payable to the City under the Bid Bond or the certified or cashier's check, as the case may be, shall be forfeited to the City in case of a failure or neglect of the Bidder to furnish, execute, and deliver to the City required Performance and Payment Bonds, Evidences of Insurance, necessary forms or material required by the Bid or failure to enter into, execute and deliver to the City the Contract on the form provided therefore, within ten (10) working days after receipt of "Notice of Intent to Award Contract" by the City that the Contract is ready for execution. The "Award of Contract" will be made upon the execution of the Contract by the Bidder and the City.

F. Return of Bid Guarantee

Within thirty (30) days after the Bids are opened, the City will return the Bid Guarantees accompanying the Bids, which are not to be considered in making the award. The bid Guarantees of the three (3) lowest responsive Bids will be held until the Contract has been fully executed after which time the Guarantees will be returned to the respective Bidders whose Bids the Guarantees accompanied.

G. Contract Time

The Contract Time is an essential part of the Contract and it will be necessary for each Bidder to satisfy the City of his ability to complete the work within the time set forth in the Bid form. Provisions for delays, liquidated damages, and extensions of time are set forth in the Standard Construction Specifications. Time is of the essence in this contract.

H. Bids

1. Preparation of Bids

Bids must be submitted on the forms provided by the city and completed in all respects as required by the Bid Documents. Bids shall include all information requested herein, and be manually signed by the Bidder or the Bidder's duly authorized representative, with the Bidder's address and phone number. If the signature is by an agent, other than an Officer of a Corporation, or a member of a Co-partnership, a Power of Attorney must be on file with the City Clerk prior to opening the Bid or submitted in envelope B of the Bid; otherwise, the Bid will be disregarded as irregular and unauthorized, and will be rejected as non-responsive. All Bids must be regular in every respect, and no alterations shall be made to the Bid form.

If erasures or changes appear on the forms, each must be initialed by the person signing the Bid. No oral, telegraphic or telephone proposals will be considered.

Bids will be received at the City Clerk's Office located at 491 East Pioneer Avenue, Homer, Alaska 99603, until the time indicated on the Invitation to Bid. Each Bid shall be submitted enclosed in a sealed, opaque envelope. The Bidder shall see that the Bid title and date of Bid opening is on the lower left-hand corner of the envelope. The City is not responsible for the premature opening of, or failure to open, a bid not properly addressed and identified. Promised overnight delivery from the Post office or private carriers usually is an inaccurate statement for Alaska and Homer Area.

No consideration will be given by the city to a claim of error unless such claim is made to the city in writing within two (2) hours after the time of Bid opening. Written verification and supporting evidence of the error shall be delivered to the City Clerk within 24 hours of the Bid Opening (not including Saturday, Sunday or legal holidays) to allow consideration of the claim for error. Supporting evidence shall be original documents, including cost breakdown sheets, supplier quotes and other documents used to compute the Bid.

It is the bidder's responsibility to see that Bids are deposited at the time and place set forth for the public opening of Bids. Bids not received by the time will not be accepted and will be returned to the Bidder in the sealed bid envelope.

I. Local Bidders Preference

The City of Homer Local Bidder Preference applies to this contract.

IV. BID SCHEDULE & BID BOND

Part A

**City of Homer E. Bunnell Avenue
East Bunnell Avenue Storm Drain Rehabilitation Project 2016**

Item No.	Spec. No.	Work Description	Est. Quant.	Unit Price	Total Amount
1	101.3	Mobilization and Demobilization Per: Lump Sum	1		
2	103.6	Traffic Maintenance Per: Lump Sum	1		
3	809	Pre-Rehabilitation Storm Drain Pipe Television Inspection Per: LF	1,176		
4	809	Post-Rehabilitation Storm Drain Pipe Television Inspection Per: LF	1,176		
5	810	Storm Drain Flow Control Per: Lump Sum	1		
6	811	Furnish and Install CIPP Liner (18-inch) Per: LF	62		
7	811	Furnish and Install CIPP Liner (36-inch) Per: LF	1,114		

Total Bid Amount \$ _____

Name of Firm _____

Address of Firm _____

Authorized Signature _____

Printed Name _____

Title of Signatory _____

Date of Bid _____

BID BOND

KNOW ALL MEN BY THESE PRESENTS, that _____

Hereinafter called the PRINCIPAL, and _____

a Corporation duly organized under the laws of the State of Alaska having its principal place of business at _____

In the State of Alaska, and authorized to do business in the State of Alaska, as SURETY, are held and firmly bound unto the City of Homer hereinafter called the OBLIGEE, in the penal sum of _____ DOLLARS (\$ _____)

for payment of which we bind ourselves, our heirs, executors, administrators, successors, and assigns, jointly and severally, firmly by these presents.

THE CONDITION OF THIS BOND IS SUCH THAT:

WHEREAS, the PRINCIPAL has herewith submitted his or its BID for _____

_____ said

Bid, by reference thereto, being hereby made a part hereof.

NOW, THEREFORE, if the Bid submitted by the PRINCIPAL is accepted and the Contract awarded to the PRINCIPAL, and if the PRINCIPAL shall execute the proposed Contract and shall furnish such Performance and Payment Bond as required by the Contract Documents within the time fixed by the documents, then this obligation shall be void: if the PRINCIPAL shall fail to execute the proposed Contract and furnish the Bond, the SURETY hereby agrees to pay the OBLIGEE the penal sum as liquidated damages:

Signed and sealed this _____ Day of _____ 2016

PRINCIPAL: _____

BY: _____

SURETY: _____

ATTORNEY-IN-FACT: _____

Part B

ADDENDA ACKNOWLEDGMENT

Project Name: **East Bunnell Avenue Storm Drain Rehabilitation Project
2016**

I hereby acknowledge addenda numbers:

Name of Firm: _____

Signature of Bidder: _____

Date: _____

This Acknowledgement must be included with Part B of the Bid or the Bid will be considered non-responsive.

City of Homer

Equal Employment Opportunity (EEO – 1) CERTIFICATION

The following Certification is required by the Equal Employment Opportunity Regulations of the Secretary of Labor (41 CFR 60-1.7 (b) (1)) and must be submitted by BIDDERS and proposed SUBCONTRACTORS in connections with contracts and subcontracts which are subject to the Equal Opportunity Clause. Contracts and subcontracts which are exempt from the Equal Opportunity Clause are set forth in 41 CFR 60-1.5 (generally only contracts or subcontracts of \$10,000 or under are exempt.) Proposed PRIME CONTRACTORS and SUBCONTRACTORS who have participated in a previous contract or subcontract subject to the Executive Orders and have not filed the required reports, should note the 41 CFR 60-1.7 (b) (1) prevents the award of contracts and subcontracts unless such contractor submits a report covering the delinquent period or such other period as specified by the Federal Highway Administration; by the Director, Office of Federal Contract Compliance Programs, U.S. Department of Labor; or by the Equal Employment Opportunity Commission.

Currently, Standard Form 100 (EEO-1) is the only report required by the Executive Orders or their implementing regulations. The Employer Information Report EEO-1 (Standard Form 100) is not a voluntary survey. The filing of the report is in accordance with Standard Form 100 instructions and is required by Federal law. The applicable law is Section 709©, Title VII, Civil rights Act of 1964 and regulations issued by the Equal Opportunity Commission under that law are reprinted in Appendix (6). Under Section 710(b) of Title VII, the Commission may obtain an order from a United States District Court compelling a covered employer to file this report. Under Section 209 (a) of Executive Order 11246, the penalties for failure by a Federal contractor or subcontractor to comply may include termination of the Federal government contract and debarment from future Federal contracts.

It is the employer's responsibility to keep current on all EEO-1 filing requirements. All inquiries and requests for special procedures should be directed to: Office of Federal Contract Compliance Programs, Department of Labor, Federal Building/U.S. Court House, 701 C Street, Box 55, Anchorage, AK 99513. Blank reporting forms may be obtained from: The Joint Reporting committee, P.O. Box 2236, Norfolk, Virginia 23501 (804) 625-3734.

(CHECK APPLICABLE BLOCK) The BIDDER_____or proposed
SUBCONTRACTOR_____hereby certifies:

1. Their firm has participated in a previous contract or subcontractor subject to the Equal Opportunity Clause as required by Federal Executive Order 11246, Section 201 (301 F.R. 12319) YES_____ NO _____

A. Their firm has filed all reports due under the applicable filing requirement with the Joint Reporting Committee Opportunity Commission as stated in this certifications. YES NO _____

2. Their firm has participated in a previous City of Homer construction contract or subcontract. YES_____ NO _____

A. Their firm has filed all the EEO reports due under applicable filing requirements of the city of Homer Department of Public Works. YES_____ NO _____

Signature of Authorized Representative of Company

Date

Name of Company

Phone Number

Address of Company

Zip Code

PROJECT NAME - East Bunnell Avenue Storm Drain Rehabilitation Project 2016

This certificate (2 pages) needs to be included with the Bid Documents Part B or the Bid will be considered non-responsive.

EQUAL EMPLOYMENT OPPORTUNITY CLAUSE

During the performance of this contract, the contractor agrees to comply with OFCC Regulations 40 CFR 60.1.4 (1) through (7) as follows:

1. The contractor will not discriminate against any employee or applicant for employment because of race, color, religion, sex or national origin. The contractor will take affirmative action to ensure that applicants are employed, and that employees are treated during employment without regard to their race, color, religion, sex, or national origin. Such action shall include, but not be limited to the following: Employment, upgrading, demotion, or transfer, recruitment or recruitment advertising; layoff or termination; rates of pay or other forms of compensation; and selection for training, including apprenticeship. The contractor agrees to post in conspicuous places, available to employees and applicants for employment, notices to be provided by the contracting officer setting forth the provisions of this nondiscrimination clause.
2. The contractor will, in all solicitations or advertisements for employees placed by or on behalf of the contractor, state that all qualified applicants will receive consideration for employment without regard to race, color, religion, sex, or national origin.
3. The contractor will send to each labor union or representative of workers with whom he has a collective bargaining agreement or other contract or understanding, a notice to be provided by the agency contracting officer, advising the labor union or workers' representative of the contractor's commitments under Section 202 of Executive Order 11246 of September 24, 1965 and shall post copies of the notice in conspicuous places available to employees and applicants for employment.
4. The contractor will comply with all provisions of executive order 11246 of September 24, 1965 and of the rules, regulations, and relevant orders of the Secretary of Labor.
5. The contractor will furnish all information and reports required by Executive Order 11246 of September 24, 1965 and by the rules, regulations, and orders of the secretary of labor, or pursuant thereto, and will permit access of his books, records, and accounts by the contracting agency and the secretary of Labor for purposes of investigation to ascertain compliance with such rules, regulations, and orders.
6. In the event of the contractor's noncompliance with the nondiscrimination clauses of this contract or with any such rules, regulations or orders, this contract may be canceled, terminated or suspended in whole or in part and the contractor may be declared ineligible for further government contracts in accordance with procedures authorized in executive order 11246 of September 24, 1965 and such other sanctions may be imposed and remedies invoked as provided in executive order 11246 of September 24, 1965 or by rule, regulation or order of the Secretary of Labor as otherwise provided by law.

7. The contractor will include the provisions of paragraphs (1) through (7) in every subcontract or purchase order unless exempted by rules, regulations, or orders of the Secretary of Labor issued pursuant to section 204 of Executive Order 11246 of September 24, 1965 so that such provisions will be binding upon each subcontractor or vendor. The contractor will take such action with respect to any subcontract or purchase order as the contracting agency may direct as a means of enforcing such provisions including sanctions for noncompliance: Provided, however that in the event the contractor becomes involved in, or is threatened with, litigation with a subcontractor or vendor as a result of such direction by the contracting agency, the contractor may request the United States to enter into such litigation to protect the interest of the United States.

(Signature)

(Title)

(Date)

This form (2 pages) must be included with the Bid, Part B, or the Bid will be considered non-responsive.

V. Contract Documents

C O N T R A C T

This Contract, made and entered into by and between the City of Homer, Alaska, a Municipal Corporation, hereinafter called the "City" and

Hereinafter called the "Contractor";

WITNESSETH:

The Contractor, in consideration of the sum to be paid him by the City and of the covenants and agreements herein contained, hereby agrees at his own cost and expense to do all the work and furnish all the materials, tools, labor and all appliances, machinery and appurtenances for City to the extent of the Bid made by the contractor, dated the _____ day of _____, 2016, all in full compliance with the Contract documents referred to herein as:

East Bunnell Avenue Storm Drain Rehabilitation Project 2016

- a) Invitation to Bid
- b) The signed copy of the Bid
- c) The Bid Bond
- d) The 2011 City of Homer Standard Construction Specifications
- e) All Addenda, totaling _
- f) The drawings which consist of 2 sheets entitled;

City of Homer E. Bunnell Avenue Storm Drain Rehabilitation Project November 2016

Are hereby referred to and reference made a part of the Contract as fully and completely as if the same were fully set forth herein.

In consideration of the performance of the work as set forth in these Contract Documents, the city agrees to pay to the contractor the amounts specified bid in the Bid and to make such payments upon the Contractor's invoicing as approved by the City Engineer.

C O N T R A C T

CONTRACT COMPLETION TIME

The Contractor agrees to complete the project, in all respects no later than **April 15th, 2017**

CONTRACT AMOUNT

 In Numbers

 In Words

LIQUIDATED DAMAGES:

Liquidated damages in the amount of \$250.00 per day will apply to the Contractor’s unexcused delay in the Completion of Construction. The liquidated damage amount specified herein shall only apply to damages and expenses the Owner may incur as a result of a delay in placing the facility into use and operation exclusive of third party damages or claims. The liquidated damage amount shall not cover any damages or expenses the Owner may incur as a result of the Contractor’s unexcused delay in completing any portion of the entire Project, which delay results in whole or in part in delay, disruption, hindrance, interference, damages or expenses to any third party. The Contractor shall remain liable for the full amount of any such delay damages or expenses suffered by any third party without limitation by any liquidated damage provision set forth in the Contract.

IN WITNESS WHEREOF, we, the parties hereto, each herewith subscribe the same this
 M o n t h _____ day _____, 2017 .

CITY OF HOMER

By: _____

Title: Mary K. Koester, Homer City Manager

CONTRACTOR

 (Contractor)

By: _____

Title: _____

PERFORMANCE BOND

KNOW ALL MEN BY THESE PRESENTS: That we _____
(Name of Contractor)

_____ a _____
(Corporation, Partnership, Individual)

hereinafter called "Principal" and _____
(Surety)

of _____, State of _____

hereinafter called the "Surety" are held and firmly bound unto the City of Homer, hereinafter called "Owner," in the penal sum of _____ dollars (\$ _____) in lawful money of the United States, for the payment of which sum well and truly to be made, we bind ourselves, our heirs, executors, administrators and successors, jointly and severally, firmly by these presents.

THE CONDITIONS OF THIS OBLIGATION are such that Whereas, the Principal has or is about to enter into a certain contract with the Owner, a copy of which is hereto attached and made a part hereof for the construction of:

NOW, THEREFORE, if the Principal shall well, truly and faithfully perform its duties, all the undertakings, covenants, terms, conditions, and agreements of said contract during the original term thereof, and any extensions thereof which may be granted by the Owner, with or without notice to the Surety, and if it shall satisfy all claims and demands incurred under such contract, and shall fully indemnify and save harmless the Owner from all costs and damages which it may suffer by reason of failure to do so, and shall reimburse and repay the Owner all outlay and expense which the Owner may incur in making good any default, then this obligations shall be void; otherwise to remain in full force and effect.

PROVIDED, FURTHER, that the said surety, for value received hereby stipulates and agrees that no change, extension of time, alteration or addition to the terms of the contract or the work to be performed thereunder or the specifications accompanying the same shall in any way affect it obligation on this bond, and it does hereby waive notice of any such change, extension of time, alteration or addition to the terms of the contract or to the work or to the specifications.

PROVIDED, FURTHER, that no final settlement between the Owner and the Principal shall abridge the right of any beneficiary hereunder, whose claim may be unsatisfied.

IN WITNESS WHEREOF, this instrument is executed in five (5) counterparts, each one of which shall be deemed and original, this the _____ day of _____, 2017.

ATTEST:

(Principal's Corporate Secretary)

(Principal)

Affix CORPORATE SEAL if applicable

(Address-Zip Code)

(Witness as to Principal)

(Address – Zip Code)

(Surety)

ATTEST:

By: _____
(Attorney-in-Fact)

(Surety) Secretary

(Address-Zip Code)

(Affix SURETY'S SEAL)

(Witness as to Surety)

(Address-Zip Code)

Notes:

If Principal is Partnership, all partners must execute bond. The Attorney-in-Fact, who executes this bond on behalf of the surety, must attach a copy of his Power-of-Attorney as evidence of his authority.

PAYMENT BOND

KNOW ALL MEN BY THESE PRESENTS: That we _____
(Name of Contractor)

_____ a _____
(Corporation, Partnership, Individual)

hereinafter called "Principal" and _____
(Surety)

of _____, State of _____

hereinafter called the "Surety" are held and firmly bound unto the City of Homer,

hereinafter called "Owner," in the penal sum of _____

dollars (\$_____) in lawful money of the United States, for the payment of which sum well and truly to be made, we bind ourselves, our heirs, executors, administrators and successors, jointly and severally, firmly by these presents.

THE CONDITIONS OF THIS OBLIGATIONS are such that Whereas, the Principal has or is about to enter into a certain contract with the Owner, a copy of which is hereto attached and made a part hereof for the construction of:

NOW, THEREFORE, if the Principal shall promptly make payment to all persons, firms, subcontractors and corporations furnishing material for, or performing labor in the prosecution of the work provided for in such contract, and any authorized extension or modification thereof, including all amounts due for material, lubricants, fuels, repairs on machinery, equipment and tools, consumed or used in connection with the construction of such work, and all insurance premiums on said work, and for all labor performed in such work, whether by subcontractor or otherwise, then this obligation shall be void: otherwise to remain in full for and effect.

PROVIDED, FURTHER, that the said Surety, for value received hereby stipulates and agrees that no change, extension of time, alteration or addition to the terms of the contract or the work to be performed thereunder or the specifications accompanying the same shall in any way affect its obligation on this bond, and it does hereby waive notice of any such change, extension of time, alteration or addition to the terms of the contract or to the work or to the specifications.

PROVIDED, FURTHER, that no final settlement between the Owner and the Principal shall abridge the right of any beneficiary hereunder, whose claim may be unsatisfied.

IN WITNESS WHEREOF, this instrument is executed in five (5) counterparts, each one of which shall be deemed and original, this the _____ day of _____, 2017.

ATTEST:

(Principal's Corporate Secretary)

(Principal)

Affix CORPORATE SEAL if applicable

(Address-Zip Code)

(Witness as to Principal)

(Address-Zip Code)

(Surety)

ATTEST:

By: _____
(Attorney-in-Fact)

(Surety) Secretary

(Address-Zip Code)

(Affix SURETY'S SEAL)

(Witness as to Surety)

(Address-Zip Code)

Notes:

If Principal is Partnership, all partners must execute bond. The Attorney-in-Fact, who executes this bond on behalf of the Surety, must attach a copy of his Power-of-Attorney as evidence of his authority.

VI. Project Schedule

East Bunnell Avenue Storm Drain Rehabilitation Project 2016

No Later Than

Bid Advertisement..... Homer News December 1st and 8th 2016

..... Alaska News Dispatch December 4th , and 11th 2016

Bids Due.....Until 2:00 PM Thursday, December 22nd, 2016

Notice of Intent to Award..... December 23rd, 2016

Contract Award January 9th, 2017

Notice to Proceed.....January 20th, 2017

Project Completion by.....April 15, 2017

VII. Special Provisions

NEW SECTION 808 STORM DRAIN AND MANHOLE CLEANING

Article 808.1 Description

The Contractor shall furnish all labor, materials, and equipment necessary for the proper cleaning of the storm drain pipes and manholes designated for inspection by closed-circuit television and rehabilitation. Cleaning shall be completed prior to inspection by closed-circuit television and prior to rehabilitation. Storm drain and manhole cleaning shall be performed with high-velocity hydro-cleaning equipment.

Article 808.2 Materials

High velocity hydro-cleaning equipment shall have the following:

1. A minimum of 900 feet of high pressure hose.
2. Two or more high velocity nozzles capable of producing a scouring action from 10 degrees to 45 degrees in all size lines to be cleaned.
3. A high velocity gun for washing and scouring manhole walls and floor with the capability of producing flows from a fine spray to a long distance solid stream.
4. A water tank with a minimum 1,000-gallon capacity, auxiliary engines and pumps, and a hydraulically driven hose reel.
5. Equipment operating controls located above ground.
6. Minimum working pressure of 1,000 pounds per square inch at a 50 gpm rate.

Article 808.3 Construction

A. Storm Drain and Manhole Cleaning

The designated storm drain pipes shall be cleaned using high velocity jet equipment. Selection of the equipment used shall be based on the condition of the pipes and manholes at the time the Work commences. The equipment shall be capable of removing dirt, grease, rocks, sand, and other materials and obstructions from the storm drain pipes and manholes. If cleaning of an entire section cannot be successfully performed from one manhole, the equipment shall be set up on the other manhole and cleaning again attempted. The cleaning Work shall be performed to a level required to provide satisfactory television inspections and to prepare the pipeline for rehabilitation as required in these Contract Documents.

During inspections in May 2016, the pipes at SD 244 and SD 246 did not have measurable sediment in the pipes. The inspections were completed with a pole-mounted camera with a telescopic zoom.

A CCTV inspection was completed by the Owner in the summer of 2016. The videos of the inspection are available free of charge from the Owner. The outlet at the east end of the project was approximately 40% full of sand and debris. The segment between SD 256 and the outlet is expected to have approximately 15 cubic yards of sand and debris in the pipe.

B. Cleaning Precautions

During storm drain cleaning operations, satisfactory precautions shall be taken in the use of cleaning equipment. Care shall be exercised to avoid damage to the pipe structure. The existing pipe has missing inverts, holes, and is near failure. Contractor will be required to use their CCTV camera to monitor the cleaning operations.

The Contractor shall be responsible and repair, at no cost to the Owner, any damage to the structure of a sound storm drain pipe caused by use of the cleaning equipment.

Cleaning shall be accomplished so that television inspection and storm drain pipe rehabilitation can be properly accomplished, as determined by the Engineer, or the pipe shall be re-cleaned at no additional cost to the Owner.

C. Material Removal

All sludge, dirt, sand, rocks, grease, and other solid or semisolid material resulting from the cleaning operation shall be removed at the downstream manhole of the section being cleaned or at the pipe outlet. Passing material from manhole section to manhole section will not be permitted, as this may cause line stoppages, accumulation of sand in wet wells, or damage to pumping equipment.

D. Material Disposal

All solids or semisolids resulting from the cleaning operations shall be removed from the site and disposed of by the Contractor. All materials shall be removed from the Work site at the end of each workday. Under no circumstances will the Contractor be allowed to accumulate debris, etc., on the work site beyond a single workday, except in totally enclosed containers and as approved by the Engineer. The material resulting from the storm drain pipe and manhole cleaning operations shall be disposed by the Contractor at the City of Homer Public Works disposal site at 3575 Heath Street.

E. Water for Storm Drain and Manhole Cleaning

Water for storm drain cleaning may be obtained from City of Homer Public Works at 3575 Heath Street. No fire hydrants shall be obstructed during water filing operations. All water use must be coordinated by the Contractor with City of

Homer. Any damage to the hydrant or water system resulting from misuse by the Contractor shall be repaired by the Contractor at no cost to the Owner.

F. Final Acceptance

Final acceptance of the storm drain cleaning shall be made upon the successful completion of the television inspection as required in these Contract Documents. If television inspection shows the cleaning to be unsatisfactory, the Contractor shall be required to reclean and reinspect the storm drain pipe by television inspection until the cleaning is shown to be satisfactory, at no additional cost to the Owner.

Article 808.4 Payment

No additional payment will be made for storm drain and manhole cleaning. Payment for storm drain and manhole cleaning will be included as a portion of the storm drain inspection and pipe and manhole rehabilitation Work completed in other Sections.

NEW SECTION 809 STORM DRAIN CLOSED CIRCUIT TELEVISION INSPECTIONS

Article 809.1 Description

Closed circuit television (CCTV) inspection will be required before rehabilitation to document the condition of the storm drain pipeline and to verify that it is clean. A post-installation CCTV inspection shall be performed to determine if the rehabilitation method selected was installed per the Contract Documents.

Article 809.2 Qualifications

CCTV work is to be completed by an operator who is currently certified in the Pipeline Assessment and Certification Program (PACP) that is provided by the National Association of Sewer Service Companies (NASSCO).

Article 809.3 Submittals

Submit documentation confirming that the CCTV operator is a currently certified in the NASSCO PACP program.

Article 809.4 Materials

Television equipment shall include television camera, television monitor, cables, power source, lights, and other equipment. The television camera shall be specifically designed and constructed for operation in connection with storm drain inspection and pipeline rehabilitation.

The camera, television monitor, and other components of the video system shall be capable of producing at a minimum a self-continuous 350-lines-per-inch resolution color video picture. All video inspections shall be recorded on a portable hard drive (thumb drive) or DVD disks. The camera shall be on skids, tracks or wheels and be suitably sized for each pipe diameter to be investigated.

The camera shall be operative in 100 percent humidity conditions and shall have a rotary head enabling a view of 90 degrees to the axis to be inspected so that service connections can be properly inspected when necessary. Lighting for the camera shall minimize reflective glare. Lighting and camera quality shall be suitable to provide a clear, in-focus picture of the entire inside periphery of the storm drain pipe for all conditions encountered during the Work. Focal distance shall be adjustable through a range from 6 inches to infinity.

The remote reading footage counter shall be accurate to two tenths of a foot over the length of the particular section being inspected and shall be mounted over the television monitor.

Article 809.5 Construction

The Contractor shall complete a television inspection of the storm drain pipe before the rehabilitation Work is performed and shall complete a television inspection of the storm drain pipe after the rehabilitation Work is completed. The Engineer will review the television inspection documents for completeness.

A. Television Inspection

The camera shall be moved through the line in a downstream direction at a uniform rate, stopping when necessary to ensure proper documentation of the storm drain's condition but in no case shall the television camera be pulled at a speed greater than 30 feet per minute. The camera shall be stopped at all service pipe connections and defects for a minimum of 10 seconds. At defects, the lens and lighting shall be readjusted, if need be, in order to provide a clear, distinct, and properly lighted feature. At all lateral connections rotate the camera head and thoroughly examine the connection.

Manual winches, power winches, television cable, powered rewinds, tracks, wheels or other devices that do not obstruct the camera view or interfere with proper documentation of the storm drain conditions shall be used to move the camera through the storm drain line.

If, during the inspection operation, the television camera will not pass through the entire storm drain main section (manhole to manhole, cleanout, inlet, or outlet), the Contractor shall set up his equipment in a manner so that the inspection can be performed from the opposite manhole or cleanout.

The pipe shall be clean at the time of the television inspection. Dirt, grease, rocks, sand, pipe coating debris and other materials and obstructions shall be removed to allow a satisfactory inspection of the interior of the pipe. If necessary, prior to the television inspection, clean the pipe as described in Section STORM DRAIN AND MANHOLE CLEANING.

The television inspection Work will not be acceptable when the water depth is greater than 25 percent of the pipe diameter except for pipes under 12 inches diameter the depth of flow shall not exceed 20 percent of the pipe diameter. The depth of flow for each pipe section shall be as measured in the upstream manhole.

If necessary, use a high velocity jet to assist with the inspection work by lowering the liquid level when the camera becomes submerged in bellies or sags or other defects that increase the liquid level in the pipe.

When storm drain depth of flow at the upstream manhole of the section being televised is above the maximum allowable, the Contractor shall reduce the flow in accordance with the applicable Section STORM DRAIN FLOW CONTROL to permit proceeding with the television inspection.

Whenever non-remote powered and controlled winches are used to pull the television camera through the line, telephones, radios, or other suitable means of communication shall be set up between the two manholes of the section being inspected to ensure that adequate communications exist between members of the crew.

The importance of accurate distance measurements is emphasized. Measurement for location of defects shall be above ground by means of a meter device. Marking on the cable, or the like, which would require interpolation for depth of manhole, will not be allowed.

Accuracy of the measurement meters shall be checked daily by use of a walking meter, roll-a-tape, or other suitable device. Footage measurements shall begin at the storm drain pipe point of penetration (manhole connection) of the upstream manhole, unless specific permission is given to do otherwise. Footage shall be shown on the video data view at all times.

B. Documentation of the Television Results

Documentation shall consist of printed log sheets and electronic data storage device. Two copies of the electronic data and two copies of the log sheets shall be supplied to the Engineer within five days of completing the television inspection Work on each pipe section. Engineer shall be provided no less than two days to review and comment on the data. The Owner will retain possession of the data.

The storm drain CCTV data and logs shall be prepared and submitted in PACP format version 7.0.2.

C. "Pre" and "Post" Storm Drain Rehabilitation CCTV Inspection

A "Pre-Rehabilitation Storm Drain Pipe Television Inspection" shall be performed on all storm drains that will be rehabilitated using the designed lining process. A "Post-Rehabilitation Storm Drain Pipe Television Inspection" shall be performed on all the storm drains that will be rehabilitated using the designed lining process.

Article 809.6 Measurement

Measurement for television inspection Work shall be based on the horizontal distance measured between pipe ends along the length of the pipe.

Article 809.7 Payment

Payment for this Work includes all labor, tools, equipment, apparatus, and incidentals required to complete the Work described in this Section. There shall be no additional payments for resetting up equipment if the television camera will not pass through a section between manholes or if a CCTV equipment malfunction delays or postpones the work. In addition, payment for television

inspection of a particular pipe section from one manhole to the next shall not exceed the total linear feet between the centerline of the manholes at each end of the pipe section.

ITEM	UNIT
Pre-Rehabilitation Storm Drain Pipe Television Inspection	Linear Foot
Post-Rehabilitation Storm Drain Pipe Television Inspection	Linear Foot

NEW SECTION 810 STORM DRAIN FLOW CONTROL

Article 810.1 General

When flow control for storm drain pipes is required for proper television inspection, pipeline rehabilitation or to accomplish other portions of the work, the Contractor shall furnish, install, and operate pumps, plugs, conduits, and other equipment to divert the flow around pipeline reaches in which work is to be performed. The design, installation, and operation of the flow control system shall be the Contractor's responsibility.

Article 810.2 Definitions

1. **Segment.** The storm drain line from inlet or center of upstream manhole to center of downstream manhole or outlet. A segment is identified by the upstream manhole number. In the case of storm drain leads with inlets, the segment identifier will be provided by the Owner
2. **Flow Control Supervisor.** The Contractor's person identified in the Flow Control Plan that has a 24-hour contact telephone and will oversee the coordination, construction, disassembly, and final walkthrough of the Work of this Section.
3. **Bypass.** Using pump(s) and piping, or other approved equipment, to convey flows as part of Flow Control.

Article 810.3 Submittals

The Contractor shall submit a general Flow Control Plan before beginning the Work. The Plan shall include:

1. Type of bypass pump(s) or equipment to be on site.
2. Plan view sketches showing staging areas of pumps, piping, plugging, vactor-truck, and discharge points.
3. Anticipated bypass conduit protection where conduits cross roadways. Include ramp design and ramp grades for 35 mph traffic, if ramps are required.
4. Name and telephone number of the Sewer Flow Control Supervisor, who is responsible for Flow Control.

The Contractor and/or the Engineer may request a meeting on site to discuss details of the Flow Control Plan prior to beginning flow control work.

Article 810.4 Material

A. Plugs

The Contractor shall provide all plugs, including inflatable plugs, to divert flows. Plugs shall be provided with a tag line and be designed so that all or any portion of the storm drain flow can be released.

B. Pumping or Suction Systems

For mainline storm drain bypass, the pumping systems shall be of sufficient capacity to handle existing flow plus additional flow that may occur during rainstorm events. A minimum of 200gpm capacity will be required for bypass pumping. The Contractor shall provide a primary bypass pump in good working order and reliable or provide a standby pump of the same equal capacity that is connected into the bypass piping system and immediately ready for operation.

C. Equipment Noise

If pumping is required on a 24-hour basis, engines shall be equipped in a manner to keep noise low and minimize disruption to the public during construction or special noise protection (insulation, enclosures, mufflers, etc.) shall be provided by the Contractor and approved by the Engineer.

D. Conduits

Provide watertight spare hoses, piping, and fittings of sufficient capacity and pressure rating to accomplish required flow diversion. The Contractor will be responsible for protection of all conduits, pumping systems from traffic.

E. Ramps

Ramps shall be constructed of compacted recycled asphalt pavement (RAP), wood, steel plating, or other approved material.

Article 810.5 Construction

A. General

When the depth of flow in the pipe upstream of the manhole section being inspected is above the maximum allowable for CCTV inspection or rehabilitation, the flow shall be reduced to the required level by plugging or blocking the flow, and/or by pumping the flow around the section where the work is being performed.

B. Pumping Systems

Pumping shall be done by the Contractor in such a manner as will not damage public or private property or create a noise nuisance or health menace or cause a fuel spill. Noise generated from the Work area shall meet City of Homer noise permit requirements and other stipulations set forth in written agreements between the Engineer, Contractor and property owner.

C. Conduits

The pumped storm drain flow shall be in an enclosed hose or pipe and shall be reinserted into the storm drain system. After the work has been completed, flow shall be restored to normal.

D. Flow Control Precautions

When flow in a storm drain line is plugged, blocked, or bypassed; sufficient precautions must be taken to protect the storm drain lines from damage that might result from sewer surcharging. Further, precautions must be taken to insure that flow control operations do not cause flooding or damage.

E. Full-Time Sewer Flow Control Monitoring

Provide full-time, 24-hour monitoring and observation of the flow control system when in operation.

F. Temporary Ramps over Bypass Piping at Vehicle and Pedestrian Access Routes

Provide temporary ramps over bypass piping to allow for vehicles and or pedestrians to access buildings, parking areas and other facilities in the project area. Ramps for pedestrian use shall be constructed to allow for ADA access. The ramps shall be installed at sidewalk crossings that are in use and shall be installed at driveways or parking lot access routes that are in use.

Article 810.6 Measurement

Measurement for storm drain flow control shall be lump sum.

Article 810.7 Payment

Payment for this Work includes all labor, tools, equipment, apparatus, incidentals, and traffic control required to complete the Work described in this Section.

Payment shall be made under the following units:

ITEM	UNIT
Storm Drain Flow Control	Lump Sum

NEW SECTION 811 CURED IN PLACE PIPE

Article 811.1 Description

Where indicated on the Drawings perform lining of existing storm drain pipes with a cured in place pipe (CIPP), complete in place. The Contractor shall furnish all labor, materials, and equipment for doing the Work including storm drain pipe cleaning, flow control and pipe lining installation.

The CIPP shall meet the requirements of ASTM F-1216 or ASTM 1743 or ASTM F 2019. The CIPP shall extend the full length of the host pipe being rehabilitated and shall provide a structurally sound, impermeable, jointless, close-fitting pipe that when cured is mechanically fixed inside the host pipe.

Polyvinyl Chloride (PVC) fold and form pipe liner installed per ASTM F1504, ASTM F1867, or ASTM F1871 will not be acceptable

Article 811.2 Submittals

Submit the following for review and approval by the Engineer:

1. Product information for the lining system materials, methods of repair and MSD's for all materials used.
2. Calculations showing that the lining thickness and strength has been designed to meet the requirements of this specification.
3. Material sample test results including soil cell testing, chemical resistance, SDR, creep and long-term structural loading tests.
4. Satisfactory sample test results from three previous projects where the lining system has been used.
5. Sampling and testing plan for the CIPP.
6. Installers proof of manufacturer's certification.
7. Information confirming that the pipe conforms to the requirements of the Materials Section of this Specification.
8. Submit documented evidence of the ability and capacity of the CIPP installer to perform this work. Submit the name and qualifications of the senior installation supervisor who will be on the project whenever lining materials are being handled, impregnated with resin, or installed. The senior installation supervisor shall have installed a minimum of 3,000 feet of similar CIPP liner of the same CIPP system in storm drains. If the Contractor does not have a senior installation supervisor that meets these requirements, the Contractor shall provide a manufacturer's representative who is qualified in the CIPP lining work at the project site for the first seven (7) days of CIPP installation while the first section of liner is being installed in the host pipe. Contractor shall submit evidence of the manufacturer representative's experience and qualifications for approval by the Engineer prior to the site visit.

Article 811.3 Materials

A. Felt or Fiberglass Tube

The tube shall consist of one or more layers of flexible, needled felt or an equivalent woven and/or non-woven material capable of carrying resin, withstanding installation pressures and curing temperatures and compatible with the resin system used. The felt tube shall meet the requirements of ASTM D 5813.

Fiberglass tubing shall consist of at least two separate tubes made of corrosion resistant (E-CR) glass fibers in accordance with ASTM D 578. The fiberglass tube shall meet the requirements of ASTM F 2019.

B. Resin/Catalyst

The contractor shall furnish an ultraviolet (UV) or thermosetting polyester or vinylester resin compatible with the approved liner and a compatible catalyst system as specified by the resin manufacturer. The resin shall be approved for use in the CIPP process for acidic domestic sewer or storm drain applications. The resin manufacturer shall provide the contractor with their recommended curing cycle and shall submit the same to the project engineer for his approval.

C. Structural Requirements

Design Criteria: The cured in place pipe thickness shall be calculated per ASTM 1216, Appendix X.1 The cured-in-place-pipe thickness shall be calculated and designed based upon the following physical condition of the existing pipe to be rehabilitated.

1. All pipes shall be considered fully deteriorated.
2. All pipes shall be considered to have a depth of bury of no less than ten (12) feet.
3. All pipes shall be subject to a water table of not less than five (5) feet above the invert of the pipe.
4. All pipes shall have a minimum of 5% ovality reduction factor in the circumference.
5. A factor of safety of not less than 2.0 shall be applied.
6. The enhancement factor K shall not be higher than 7.
7. Service in the pipe is gritty and abrasive.
8. The CIPP shall have a wall thickness that is no less than 10 percent (10%) larger than the minimum calculated design thickness.
9. Dry soil density shall be 115 pcf
10. Modulus of soil reaction E' shall be 1,000 psi.
11. Live load shall be AASHTO HS20-44.

D. Mechanical Properties

The CIPP when cured shall have the following minimum values when tested in accordance with ASTM F-1216-98 by an independent testing laboratory:

1. Flexural Strength (tested in accordance with ASTM D790)..... 4,500 psi
2. Flexural Modulus (tested in accordance with ASTM D790).. 250,000 psi
3. Chemical Resistance Meet Minimum Requirements of ASTM F1216-98, Table X2.1

Article 811.4 Construction

A. Safety

The Contractor shall carry out this operation in strict accordance with all OSHA and manufacturer's safety requirements. Particular attention is drawn to those safety requirements involving working with scaffolding, entering confined spaces and operations with hot media.

B. Pre-Installation

Inspection of pipelines shall be performed by experienced personnel trained in locating breaks, obstacles, and service connections by closed-circuit television. The interior of the pipeline shall be carefully inspected to determine the location of any conditions which may prevent proper installation of the lining of the pipelines, and it shall be noted so that these conditions can be corrected. Immediately after the inspection is complete, the Contractor shall provide the Engineer with an inspection recording and suitable log for later reference. Television inspection Work shall be accomplished in accordance with Section TELEVISION INSPECTION.

The Contractor shall inspect the storm drain pipe immediately before the insertion of the impregnated tube to assure that the pipe is clean and existing pipe conditions are acceptable for lining.

C. Flow Control

Flow shall be controlled in accordance with Section STORM DRAIN FLOW CONTROL.

D. Line Obstructions

If the pre-insertion video inspection reveals an obstruction in the existing pipe (heavy solids, dropped joint, collapsed pipe, etc.) that cannot be removed with conventional storm drain cleaning equipment, then the obstruction shall be repaired or removed by the Contractor in conformance with these Contract Documents.

E. Resin Impregnation

The Contractor shall designate a location where the felt tube will be impregnated with resin, using distribution rollers and vacuum, to thoroughly saturate the felt tube prior to its dispatch for installation. A catalyst system or additive(s) compatible with the resin and tube may be used per the manufacturer's recommendation. They shall, however, not impair or reduce the resin's ability to withstand the minimum chemical resistance or load bearing criteria. The quantity of resin used for tube impregnation shall be sufficient

to fill the volume of air voids in the tube with additional allowances for polymerization shrinkage and the loss of resin through cracks and irregularities in the original pipe wall.

F. Installation

The wetted out tube shall be transported and protected until it is inserted through an existing manhole. The insertion area, equipment platform, etc., shall be securely protected, and all damaged structures shall be repaired by the Contractor.

The CIPP shall be installed in accordance with ASTM F 1216 or ASTM F 1743. Care shall be taken not to overstress the felt or fiberglass tube at the elevated curing temperatures, which may cause damage or failure prior to cure.

G. Curing

After completion of the insertion, the Contractor shall follow manufacturer's recommended curing method. The Contractor shall use a hot water recirculation, steam system, or ultraviolet light (depending on the requirements described below), capable of delivering a consistent cure of the resin.

For UV cure provide equipment capable of delivering desired UV light intensity, pressure, and temperature uniformly throughout the liner. The UV light intensity, pressure, and temperature shall be continuously monitored by both computer and video as recommended by the liner manufacturer.

Water from the Owner's water system will be available at no cost as needed for the installation and curing process. The Contractor shall be responsible for moving or conveying the water to the work area. The curing temperature shall be as recommended by the resin manufacturer.

For water or steam cure, the heat source shall be fitted with suitable monitors to gauge the temperature of the outgoing and incoming curing water or steam. Another such gauge shall be placed between the impregnated tube and the invert to the original pipe at all manholes along the length of the liner (including intermediate manholes) to determine the temperatures during the resin curing process. Initial cure may be considered completed when the exposed portions of the felt tube pipe appear to be hard, and the remote sensing device indicates the temperatures to be adequate, as recommended by the resin/catalyst system manufacturer. Curing temperatures and duration shall comply with previously submitted data and information.

For water or steam cure, no water will be allowed to enter the storm drain system. The Contractor is required to collect all water from curing operations and discharge to the sanitary sewer system. The discharge location will be the Public Works Department at 3575 Heath Street.

Coupon samples shall be obtained for testing as stated below.

H. Cooling Down

Cool the hardened cured-in-place-pipe to a temperature below 100 degrees F before relieving the internal pressure. Cool down shall be accomplished with water. Careful attention shall be taken not to cool too quickly to eliminate the possibility of thermoshock. Care shall be taken in the release of the internal pressure so that a

vacuum will not be developed that could damage the newly installed liner. Water from the cool down process will be collected and discharged to the sanitary sewer system. Water will not be allowed to flow into the storm drain system.

Cool down process may vary depending on the installation technique of the manufacturer/Contractor.

I. Fit/Finish

The finished pipe shall be continuous over the entire length of the storm drain pipe section, from manhole to manhole. The finished liner shall tightly conform to the walls of the existing host pipe. No gap or annular space between the finished liner and the host pipe shall be allowed or be visible at the manhole, or other exposed points within the finished liner section. The finished liner shall be homogenous throughout and free of any protrusions, holes, cracks, etc., which in the opinion of the Engineer will affect the liner's structural integrity, hydraulic performance, future maintenance access, and overall line performance.

At liner termination points in manholes, provide a smooth transition from the liner to the manhole invert. If necessary, grind the exposed liner edge smooth to eliminate rough or abrupt edges that may collect debris or hamper CCTV equipment operation.

J. Clean Up

After the installation Work has been completed and all testing accepted, the Contractor shall clean up the entire project area. The Contractor shall dispose of all excess material and debris not incorporated into the permanent installation.

K. Sampling and Testing

Sampling and testing shall meet the requirements of ASTM F-1216-98 and shall include the following:

1. Prepare a minimum of two CIPP samples from each diameter of liner installed.
2. Samples shall be large enough to provide a minimum of five specimens.
3. Test for initial tangent flexural modulus of elasticity and flexural stress in accordance with Test Methods D 790 and meet the requirements of Article 17.3 Materials, D. Mechanical Properties within this specification.
4. Verify that the liner thickness of the sample meets the requirements of this specification.
5. Submit test results to the Engineer for review and approval.
6. Samples shall be cut from a section of cured CIPP at an intermediate manhole or at the termination point that has been inverted through a like diameter pipe which has been held in place by a suitable heat sink, such as sand bags or other similar material.

L. Final Television Inspection

After the liner is inserted but before final acceptance, the Contractor shall complete a television inspection of the cured in place lined pipe and submit the video and log to the Engineer for review. The final television inspection shall conform to Section STORM

DRAIN CLOSED CIRCUIT TELEVISION INSPECTIONS and to the requirements of this Specification. The entire circumference of the liner and shall be observed during the television inspection. The Contractor shall by-pass or temporarily block the flow in accordance with Section STORM DRAIN FLOW CONTROL, if necessary to achieve this condition. The entire circumference of the liner shall be readily visible with the television camera.

M. Final Acceptance

The final acceptance for the liner will be based on visual observation results of the post-rehabilitation television inspection and satisfactory sampling and testing results. During the post-rehabilitation television inspection the Engineer will examine the pipe wall for deformation or damage. The Contractor shall correct deformations and reinspect as required by the Engineer.

Article 811.5 Measurement

Measurement for all sizes of lining pipe shall be based on the horizontal distances and will be for actual linear footage for liner installed in the field and shall be measured between the pipe ends along the length of the pipe.

Article 811.6 Payment

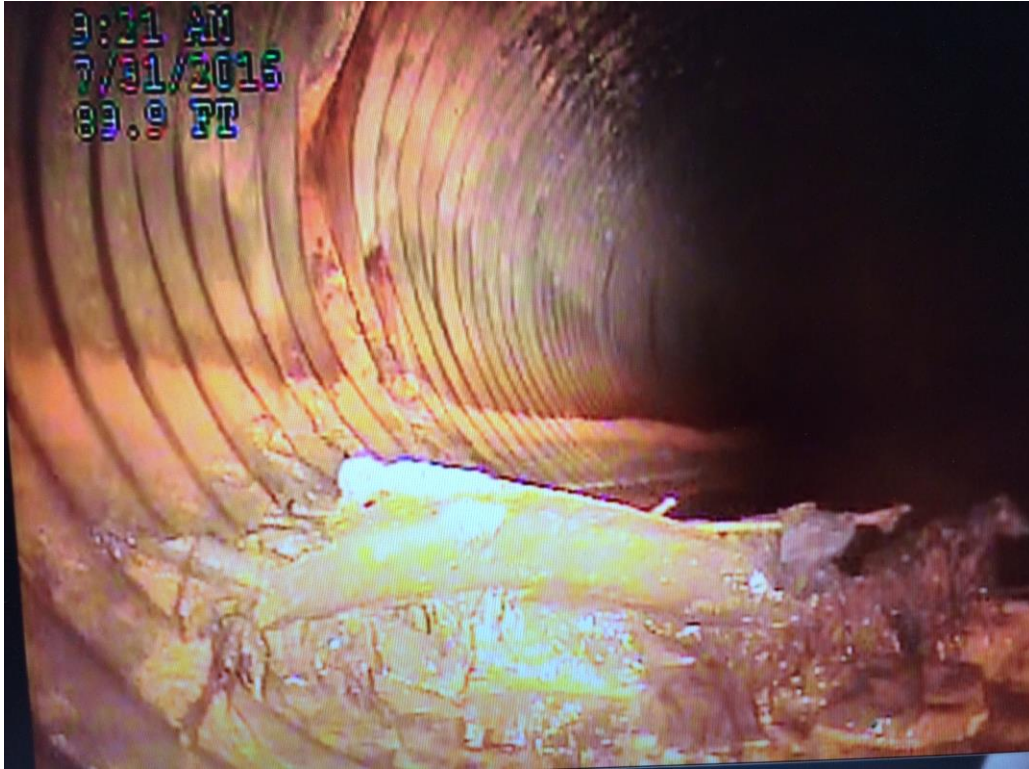
Payment for furnishing and installing CIPP liner shall constitute full payment for furnishing all materials, and performing the Work specified in this Section and including liner, resin, storm drain line cleaning and preparation, and sampling and testing. Payment for the liner will also include the cost of sealing the liner in the manholes.

Unit cost payment shall be made on the following basis:

ITEM	UNIT
Furnish and Install CIPP Liner (diameter)	Linear Foot

VIII. Appendices

Appendix A
CMP Pipe Photos



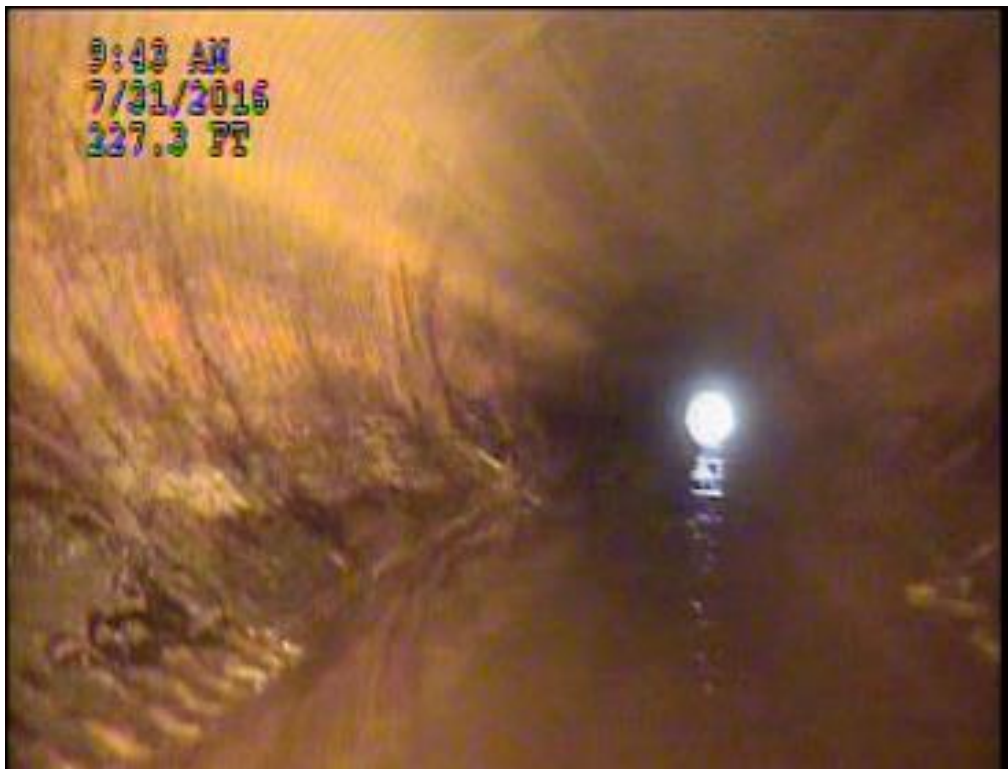
E. Bunnell Avenue – invert defect 90-ft west of SD 246



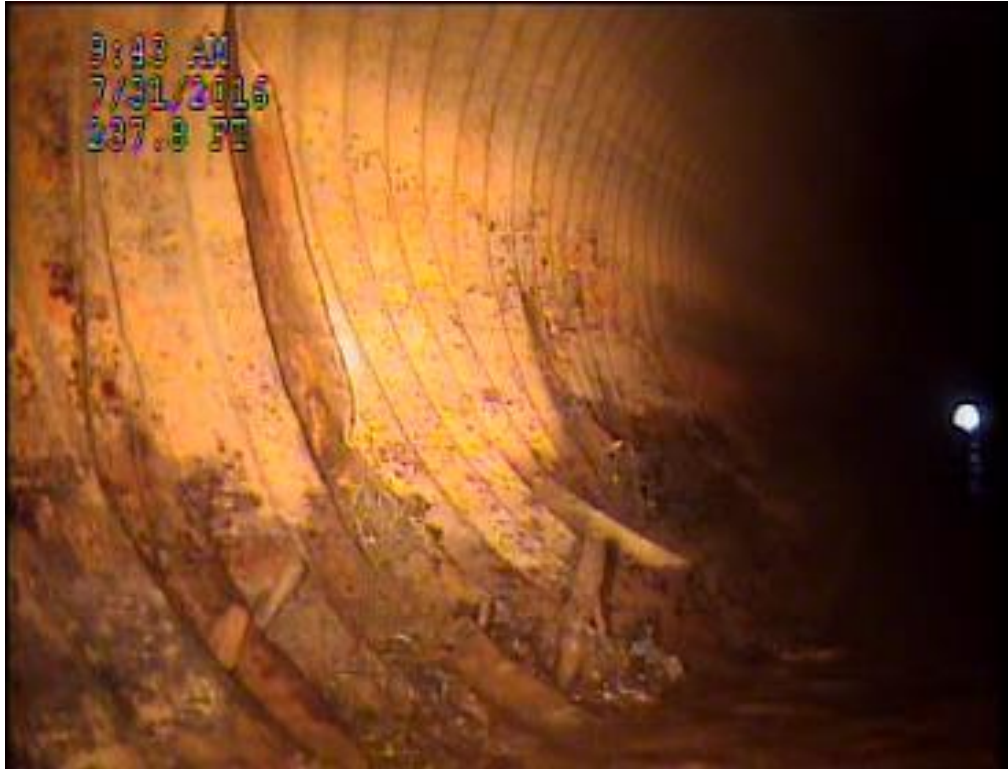
E. Bunnell Avenue – hole in 36-inch CMP



E. Bunnell Avenue – hole in 36-inch CMP



E. Bunnell Avenue – Observation of 36-inch Pipe



E. Bunnell Avenue – hole in 36-inch CMP



E. Bunnell Avenue – upstream 36-inch pipe at SD 246



E. Bunnell Avenue – upstream 36-inch pipe at SD 246



E. Bunnell Avenue – downstream 36-inch pipe at SD 246



Looking northeast at 18-inch inlet to SD 246



E. Bunnell Avenue – at inlet of 18-inch lead southwest of SD 246



E. Bunnell Avenue – downstream 36-inch CMP at SD 244



E. Bunnell Avenue – downstream 36-inch CMP at SD 244

Local Bidder Preference

A local bidder preference shall be incorporated into the award of this contract based on the following criteria:

- A Bidder who maintains and operates a business within the boundaries of the City of Homer shall be considered the lower Bidder where its offer is:
 1. Not more than five percent (5%) higher than the lowest non-local bid up to five hundred thousand dollars (\$0 - \$500,000) or;
 2. Not more than five percent (5%) higher than the lowest non-local bid on the first five hundred thousand dollars (\$500,000) and two and ½ percent (2.5%) higher than the lowest non-local bid on an amount greater than five hundred thousand dollars (\$500,000) to one million dollars (\$1,000,000). There will be no additional local bidder preference percentage for bid amounts exceeding one million dollars (\$1,000,000).

- A Bidder shall be deemed a Local Bidder who:
 1. Holds a current Alaska Business License to provide the services requested by this contract; and
 2. Submits a bid under the name appearing on the firm's current Alaska Business License; and
 3. Has maintained a place of business within the boundaries of the City of Homer for a period of at least six (6) months immediately preceding the date of the Bid and intends to permanently maintain such place of business in the future; and
 4. Is not delinquent in the payment of any taxes, charges, or assessments owed to the City of Homer on account of that business.

The City Manager may require such documentation or verification by the person or firm claiming to be a local bidder as deemed necessary to establish the qualifications stated in this section.

IX. Submittals

(Due within two (2) days after bid)

**CONTRACTOR'S QUESTIONNAIRE
NOTICE TO CONTRACTORS**

Prior to Award, this questionnaire shall be completely filled out for the project upon which a bid is submitted.

A. FINANCIAL

1. Have you ever failed to complete a contract on account of insufficient resources? _____

2. Have you made sufficient arrangements to finance the work? _____
If so, with whom and for what amount? _____

If so, with what company? _____

B. EQUIPMENT

1. Set forth below the equipment which you have available for the work which you propose to do. This equipment should be listed in detail (General statements will not be accepted).

<u>NO.</u>	<u>ITEMS</u>	<u>TYPE</u>	<u>SIZE/CAPACITY</u>	<u>PRESENT VALUE</u>

2. Do you thoroughly understand that in case the contract is awarded to you, you may be required to use any or all of the equipment listed on the work covered by this contract? _____

3. Do you propose to purchase any equipment for use on this project should contract be awarded to you? If so, state type, quantity and approximate cost.

4. Do you propose to rent any equipment for this work? _____
If so, state type, quantity, and reason for renting. _____

5. Have you made contracts or received firm offers for all necessary materials with the prices used in preparing your proposal? _____

6. Do you intend to plan to subcontract any of the work? _____
If so, what types or portions of the work. _____

Approximate value \$ _____ Percent of total bid _____

C. EXPERIENCE

1. How many years has your organization been in business as a general contractor under your present business name? _____

2. How many years experience in construction work has your organization had:

a) as a General Contractor _____.

b) as a Subcontractor _____.

3. List previous contracts you have completed of a similar nature to this proposed contract:

a) _____

b) _____

c) _____

d) _____

e) _____

4. List projects which you currently have under contract or expect to have under contract during the life of this contract:

a) _____

b) _____

c) _____

Use additional sheets as necessary.

5. List your staff you plan to use on this project and the position they will fill for this project (include managerial and clerical personnel that will provide support services).

STAFF MEMBER

POSITION

Signature: _____

Title: _____

JOINT VENTURE

1. Joint Venture Agreement
2. A statement signed by authorized person of each party to the joint venture.
3. Each party to the joint venture shall comply with the requirements for corporations, partnerships or individuals, as applicable.

PARTNERSHIP

1. Partnership Agreement
2. Statement signed by all partners granting authority to the partner signing the Bid.

CORPORATIONS

1. Articles of Incorporation – most recent.
2. By-Laws – most recent.
3. Resolution of the Board of Directors granting the authority to the officer signing on behalf of the corporation.

X. State of Alaska Labor Rates

Laborers' & Mechanics' Minimum Rates of Pay

Effective September 1, 2016
Issue 33



- This page intentionally left blank -



THE STATE
of **ALASKA**
GOVERNOR BILL WALKER

**Department of Labor and
Workforce Development**

Office of the Commissioner

Post Office Box 111149
Juneau, Alaska 99811
Main: 907.465.2700
fax: 907.465-2784

September 1, 2016

TO ALL CONTRACTING AGENCIES:

At the Alaska Department of Labor and Workforce Development, our goal is putting Alaskans to work. This pamphlet is designed to help contractors awarded public construction contracts understand the most significant laws of the State of Alaska pertaining to prevailing wage and resident hire requirements.

This pamphlet identifies current prevailing wage rates and resident hire classifications for public construction contracts (any construction projects awarded by the State of Alaska or its political subdivisions, such as local governments and certain non-profit organizations). Because these rates may change, this publication is printed in the spring and fall of every year, so please be sure you are using the appropriate rates. The rates published in this edition become effective September 1, 2016.

All projects with a final bid date of September 11, 2016, or later, must pay the prevailing wage rates contained in this pamphlet. As the law now provides, these rates will remain stable during the life of a contract or for 24 calendar months, whichever is shorter. **The 24-month period begins on the date the prime contract is awarded.** Upon expiration of the initial 24-month period, the latest wage rates issued by the department shall become effective for a subsequent 24-month period or until the original contract is completed, whichever occurs first. This process shall be repeated until the original contract is completed.

The term "original contract" means the signed contract that resulted from the original bid and any amendments, including changes of work scope, additions, extensions, change orders, and other instruments agreed to by the parties that have not been subject to subsequent open bid procedures.

If a higher federal rate is required due to partial federal funding or other federal participation, the higher rate must be paid.

For additional copies of this pamphlet, contact the nearest office of the Division of Labor Standards and Safety, Wage and Hour office or the Web address at: <http://labor.state.ak.us/lss/pamp600.htm>

For questions regarding prevailing wage or resident hire requirements, please contact the nearest Wage and Hour office. These offices are listed on Page xi.

Sincerely,


Heidi Drygas
Commissioner

Table of Contents

Excerpts from Alaska Law

Sec. 36.05.005. Applicability.....	iii
Sec. 36.05.010. Wage rates on public construction.....	iii
Sec. 36.05.040. Filing schedule of employees, wages paid and other information	iii
Sec. 36.05.045. Notice of work and completion; withholding of payment	iii
Sec. 36.05.060. Penalty for violation of this chapter	iv
Sec. 36.05.070. Wage rates in specifications and contracts for public works	iv
Sec. 36.05.080. Failure to pay agreed wages.....	iv
Sec. 36.05.090. Payment of wages from withheld payments and listing contractors who violate contracts	iv
Sec. 36.05.900. Definition.. ..	v

Additional Information

Laborer Classification Clarification.....	v
Accommodations and Per Diem	v
Apprentice Hiring Requirements	vi
Apprentice Rates.....	vii
Fringe Benefit Plans.....	vii
Special Prevailing Wage Rate Determination.....	vii
Request for Notice of Proposed Change of Labor Standards Regulations	ix
Alaska Hire Employment Preference.....	x
Debarment List	xi

Wage Rates	Pages 1-25
-------------------------	-------------------

Note to Readers: The statutes and administrative regulations listed in this publication were taken from the official codes, as of the effective date of the publication. However, there may be errors or omissions that have not been identified and changes that occurred after the publication was printed. This publication is intended as an informational guide only and is not intended to serve as a precise statement of the statutes and regulations of the State of Alaska. To be certain of the current laws and regulations, please refer to the official codes.

EXCERPTS FROM ALASKA LAW

(The following statute (36.05.005) applies to projects bid on or after October 20, 2011)

Sec. 36.05.005. Applicability.

This chapter applies only to a public construction contract that exceeds \$25,000.

Sec. 36.05.010. Wage rates on public construction.

A contractor or subcontractor who performs work on a public construction contract in the state shall pay not less than the current prevailing rate of wages for work of a similar nature in the region in which the work is done. The current prevailing rate of wages is that contained in the latest determination of prevailing rate of wages issued by the Department of Labor and Workforce Development at least 10 days before the final date for submission of bids for the contract. The rate shall remain in effect for the life of the contract or for 24 calendar months, whichever is shorter. At the end of the initial 24-month period, if new wage determinations have been issued by the department, the latest wage determination shall become effective for the next 24-month period or until the contract is completed, whichever occurs first. This process shall be repeated until the contract is completed.

Sec. 36.05.040. Filing schedule of employees, wages paid, and other information.

All contractors or subcontractors who perform work on a public construction contract for the state or for a political subdivision of the state shall, before the Friday of every second week, file with the Department of Labor and Workforce Development a sworn affidavit for the previous reporting period, setting out in detail the number of persons employed, wages paid, job classification of each employee, hours worked each day and week, and other information on a form provided by the Department of Labor and Workforce Development.

Sec. 36.05.045. Notice of work and completion; withholding of payment.

- (a) Before commencing work on a public construction contract, the person entering into the contract with a contracting agency shall designate a primary contractor for purposes of this section. Before work commences, the primary contractor shall file a notice of work with the Department of Labor and Workforce Development. The notice of work must list work to be performed under the public construction contract by each contractor who will perform any portion of work on the contract and the contract price being paid to each contractor. The primary contractor shall pay all filing fees for each contractor performing work on the contract, including a filing fee based on the contract price being paid for work performed by the primary contractor's employees. The filing fee payable shall be the sum of all fees calculated for each contractor. The filing fee shall be one percent of each contractor's contract price. The total filing fee payable by the primary contractor under this subsection may not exceed \$5,000. In this subsection, "contractor" means an employer who is using employees to perform work on the public construction contract under the contract or a subcontract.
- (b) Upon completion of all work on the public construction contract, the primary contractor shall file with the Department of Labor and Workforce Development a notice of completion together with payment of any additional filing fees owed due to increased contract amounts. Within 30 days after the department's receipt of the primary contractor's notice of completion, the department shall inform the contracting agency of the amount, if any, to be withheld from the final payment.
- (c) A contracting agency
 - (1) may release final payment of a public construction contract to the extent that the agency has received verification from the Department of Labor and Workforce Development that
 - (A) the primary contractor has complied with (a) and (b) of this section;
 - (B) the Department of Labor and Workforce Development is not conducting an investigation under this title; and
 - (C) the Department of Labor and Workforce Development has not issued a notice of a violation of this chapter to the primary contractor or any other contractors working on the public construction contract; and

- (2) shall withhold from the final payment an amount sufficient to pay the department's estimate of what may be needed to compensate the employees of any contractors under investigation on this construction contract, and any unpaid filing fees.
- (d) The notice and filing fee required under (a) of this section may be filed after work has begun if
 - (1) The public construction contract is for work undertaken in immediate response to an emergency; and
 - (2) The notice and fees are filed not later than 14 days after the work has begun.
- (e) A false statement made on a notice required by this section is punishable under AS 11.56.210.

Sec. 36.05.060. Penalty for violation of this chapter.

A contractor who violates this chapter is guilty of a misdemeanor and upon conviction is punishable by a fine of not less than \$100 nor more than \$1,000, or by imprisonment for not less than 10 days nor more than 90 days, or by both. Each day a violation exists constitutes a separate offense.

Sec. 36.05.070. Wage rates in specifications and contracts for public works.

- (a) The advertised specifications for a public construction contract that requires or involves the employment of mechanics, laborers, or field surveyors must contain a provision stating the minimum wages to be paid various classes of laborers, mechanics, or field surveyors and that the rate of wages shall be adjusted to the wage rate under AS 36.05.010.
- (b) Repealed by §17 ch 142 SLA 1972.
- (c) A public construction contract under (a) of this section must contain provisions that
 - (1) the contractor or subcontractors of the contractor shall pay all employees unconditionally and not less than once a week;
 - (2) wages may not be less than those stated in the advertised specifications, regardless of the contractual relationship between the contractor or subcontractors and laborers, mechanics, or field surveyors;
 - (3) the scale of wages to be paid shall be posted by the contractor in a prominent and easily accessible place at the site of the work;
 - (4) the state or a political subdivision shall withhold so much of the accrued payments as is necessary to pay to laborers, mechanics, or field surveyors employed by the contractor or subcontractors the difference between
 - (A) the rates of wages required by the contract to be paid laborers, mechanics, or field surveyors on the work; and
 - (B) the rates of wages in fact received by laborers, mechanics, or field surveyors.

Sec. 36.05.080. Failure to pay agreed wages.

Every contract within the scope of AS 36.05.070 shall contain a provision that if it is found that a laborer, mechanic, or field surveyor employed by the contractor or subcontractor has been or is being paid a rate of wages less than the rate of wages required by the contract to be paid, the state or its political subdivision may, by written notice to the contractor, terminate the contractor's right to proceed with the work or the part of the work for which there is a failure to pay the required wages and to prosecute the work to completion by contract or otherwise, and the contractor and the contractor's sureties are liable to the state or its political subdivision for excess costs for completing the work.

Sec. 36.05.090. Payment of wages from withheld payments and listing contractors who violate contracts.

- (a) The state disbursing officer in the case of a state public construction contract and the local fiscal officer in the case of a political subdivision public construction contract shall pay directly to laborers, mechanics, or field surveyors from accrued payments withheld under the terms of the contract the wages due laborers, mechanics, or field surveyors under AS 36.05.070.
- (b) The state disbursing officer or the local fiscal officer shall distribute to all departments of the state government and to all political subdivisions of the state a list giving the names of persons who have disregarded their obligations to employees. A person appearing on this list and a firm, corporation,

partnership, or association in which the person has an interest may not work as a contractor or subcontractor on a public construction contract for the state or a political subdivision of the state until three years after the date of publication of the list. If the accrued payments withheld under the contract are insufficient to reimburse all the laborers, mechanics, or field surveyors with respect to whom there has been a failure to pay the wages required under AS 36.05.070, the laborers, mechanics, or field surveyors have the right of action or intervention or both against the contractor and the contractor's sureties conferred by law upon persons furnishing labor or materials, and in the proceedings it is not a defense that the laborers, mechanics, or field surveyors accepted or agreed to accept less than the required rate of wages or voluntarily made refunds.

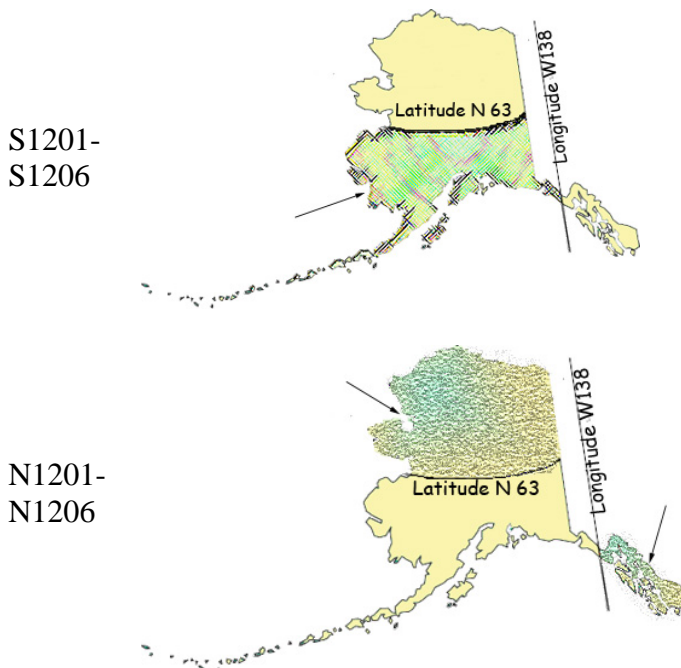
Sec. 36.05.900. Definition.

In this chapter, "contracting agency" means the state or a political subdivision of the state that has entered into a public construction contract with a contractor.

ADDITIONAL INFORMATION

LABORER CLASSIFICATION CLARIFICATION

The laborer rates categorized in class code S1201-S1206 apply in one area of Alaska; the area that is south of N63 latitude and west of W138 Longitude. The laborer rates categorized in class code N1201-N1206 apply in two areas of Alaska; the Alaska areas north of N63 latitude and east of W138 longitude. The following graphic representations should assist with clarifying the applicable wage rate categories:



ACCOMMODATIONS AND PER DIEM

The Alaska Department of Labor and Workforce Development has adopted a per diem requirement for blocklayers, bricklayers, carpenters, dredgemen, heat & frost insulators/asbestos workers, ironworkers, laborers, operative plasterers & cement masons, painters, piledrivers, power equipment operators, roofers, surveyors, truck

drivers/surveyors, and tunnel workers. This per diem rate creates an allowable alternative to providing board and lodging under the following conditions:

Employer-Provided Camp or Suitable Accommodations

Unless otherwise approved by the Commissioner, the employer shall ensure that a worker who is employed on a project that is 65 road miles or more from the international airport in either Fairbanks, Juneau or Anchorage or is inaccessible by road in a 2-wheel drive vehicle and who is not a domiciled resident of the locality of the project shall receive meals and lodging. Lodging shall be in accordance with all applicable state and federal laws. In cases where the project site is not road accessible, but the employee can reasonably get to the project worksite from their permanent residence within one hour, the Commissioner may waive these requirements for that employee upon a written request from the employer.

The term “domiciled resident” means a person living within 65 road miles of the project, or in the case of a highway project, the mid-point of the project, for at least 12 consecutive months prior to the award of the project. However, if the employer or person provides sufficient evidence to convince the department that a person has established a permanent residence and an intent to remain indefinitely within the distance to be considered a “domiciled resident,” the employer shall not be required to provide meals and lodging or pay per diem.

Where the employer provides or furnishes board, lodging or any other facility, the cost or amount thereof shall not be considered or included as part of the required prevailing wage basic hourly rate and cannot be applied to meet other fringe benefit requirements. The taxability of employer provided board and lodging shall be determined by the appropriate taxation enforcement authority.

Per Diem

Employers are encouraged to use commercial facilities and lodges; however, when such facilities are not available, per diem in lieu of meals and lodging must be paid at the basic rate of \$75.00 per day, or part thereof, the worker is employed on the project. Per diem shall not be allowed on highway projects west of Livengood on the Elliott Highway, at Mile 0 of the Dalton Highway to the North Slope of Alaska, north of Mile 20 on the Taylor Highway, east of Chicken, Alaska, on the Top of the World Highway and south of Tetlin Junction to the Alaska-Canada border.

The above-listed standards for room and board and per diem only apply to the crafts as identified in Pamphlet 600, *Laborers’ and Mechanics’ Minimum Rates of Pay*. Other crafts working on public construction projects shall be provided room and board at remote sites based on the department’s existing policy guidelines. In the event that a contractor provides lodging facilities, but no meals, the department will accept payment of \$36 per day for meals to meet the per diem requirements.

**** NEW ** APPRENTICE HIRING REQUIREMENTS**

On November 5, 2015, Governor Walker signed Administrative Order No. 278 to help ensure that there is an adequate pool of well-trained Alaskan construction workers to satisfy the industry needs. AO 278 replaced AO 226 and established a 15 percent goal for hiring federally registered apprentices in certain job categories on all public construction projects awarded by the Alaska Department of Transportation and Public Facilities and the Alaska Department of Administration that exceed \$2.5 million. The Order requires the commissioners of DOTPF and DOA to strive to require not less than 15 percent labor hours on a qualified project are performed by federally registered apprentices in the following classifications:

- | | | |
|---------------|-----------------------------------|--------------------------|
| Boilermakers | Elevator Constructors & Mechanics | Plumbers and Pipefitters |
| Bricklayers | Insulation Workers | Roofers |
| Carpenters | Ironworkers | Sheetmetal Workers |
| Cement Masons | Laborers | Surveyors |

Culinary Workers
Electricians
Equipment Operators

Mechanics
Millwrights
Painters
Piledriving Occupations

Sprinkler Fitters
Truck Drivers
Tug Boat Workers
Welders

A federally registered apprentice is enrolled in an apprentice training program under 29 U.S.C. 50 and 29 C.F.R. 29.1 – 29.13. Contractors will be expected to file apprentice utilization forms throughout the project or utilize the online certified payroll filing system available on the My Alaska website. A copy of AO 278 may be viewed in its entirety at <http://gov.state.ak.us/admin-orders/278.html> or call any Wage and Hour office to receive a copy.

APPRENTICE RATES

Apprentice rates at less than the minimum prevailing rates may be paid to apprentices according to an apprentice program which has been registered and approved by the Commissioner of the Alaska Department of Labor and Workforce Development in writing or according to a bona fide apprenticeship program registered with the U.S. Department of Labor, Office of Apprenticeship Training. **Any employee listed on a payroll at an apprentice wage rate who is not registered as above shall be paid the journeyman prevailing minimum wage in that work classification.** Wage rates are based on prevailing crew makeup practices in Alaska and apply to work performed regardless of either the quality of the work performed by the employee or the titles or classifications which may be assigned to individual employees.

FRINGE BENEFIT PLANS

Contractors/subcontractors may compensate fringe benefits to their employees in any one of three methods. The fringe benefits may be paid into a union trust fund, into an approved benefit plan, or paid directly on the paycheck as gross wages.

Where fringe benefits are paid into approved plans, funds, or programs including union trust funds, the payments must be contributed at least monthly. If contractors submit their own payroll forms and are paying fringe benefits into approved plans, funds, or programs, the employer's certification must include, in addition to those requirements of 8 AAC 30.020(c), a statement that fringe benefit payments have been or will be paid at least monthly. Contractors who pay fringe benefits to a plan must ensure the plan is one approved by the Internal Revenue Service and that the plan meets the requirements of 8 AAC 30.025 (eff. 3/2/08) in order for payments to be credited toward the prevailing wage obligation.

SPECIAL PREVAILING WAGE RATE DETERMINATION

Special prevailing wage rate determinations may be requested for special projects or a special worker classification if the work to be performed does not conform to traditional public construction for which a prevailing wage rate has been established under 8 AAC 30.050(a) of this section. Requests for special wage rate determinations must be in writing and filed with the Commissioner at least 30 days before the award of the contract. An applicant for a special wage rate determination shall have the responsibility to support the necessity for the special rate. An application for a special wage rate determination filed under this section must contain:

- (1) a specification of the contract or project on which the special rates will apply and a description of the work to be performed;
- (2) a brief narrative explaining why special wage rates are necessary;
- (3) the job class or classes involved;
- (4) the special wage rates the applicant is requesting, including survey or other relevant wage data to support the requested rates;
- (5) the approximate number of employees who would be affected; and
- (6) any other information which might be helpful in determining if special wage rates are appropriate.

Requests made pursuant to the above should be addressed to:

Director
Alaska Department of Labor and Workforce Development
Labor Standards & Safety Division
Wage and Hour Administration
P.O. Box 111149
Juneau, AK 99811-1149
-or-
Email: anchorage.lss-wh@alaska.gov

**LABOR STANDARDS REGULATIONS
NOTICE REQUEST**

If you would like to receive *notices of proposed changes to regulations* for Wage and Hour or Mechanical Inspection, please indicate below the programs for which you are interested in receiving such notices, print your name and email or mailing address in the space provided, and send this page to:

Alaska Department of Labor and Workforce Development
Labor Standards & Safety Division
Wage and Hour Administration
1251 Muldoon Road, Suite 113
Anchorage, AK 99504-2098
Email: anchorage.lss-wh@alaska.gov

For *REGULATIONS* information relating to any of the following:

- Wage and Hour Title 23 Employment Practices
- Wage and Hour Title 36 Public Works
- Employment Agencies
- Child Labor
- Employment Preference (Local Hire)
- Plumbing Code
- Electrical Code
- Boiler/Pressure Vessel Construction Code
- Elevator Code
- Certificates of Fitness
- Recreational Devices

Request any of the following *PUBLICATIONS* by checking below:

- | | |
|--|---|
| <input type="checkbox"/> Wage and Hour Title 23 Employment Practices | <input type="checkbox"/> Public Construction Pamphlet |
| <input type="checkbox"/> Minimum Wage & Overtime Poster | <input type="checkbox"/> Public Construction Wage Rates |
| <input type="checkbox"/> Child Labor Poster | <input type="checkbox"/> Child Labor Pamphlet |

PLEASE NOTE: DUE TO INCREASED MAILING AND PRINTING COSTS, ONLY ONE OF EACH PUBLICATION REQUESTED WILL BE MAILED TO YOU. IF YOU WISH TO RECEIVE ADDITIONAL COPIES OR SUBSEQUENT PUBLICATIONS, PLEASE CONTACT OUR OFFICE AT (907) 269-4900.

Name: _____

Mailing Address: _____

Email Address: _____

**DEPARTMENT OF LABOR & WORKFORCE DEVELOPMENT
ALASKA EMPLOYMENT PREFERENCE INFORMATION**

By authority of AS 36.10.150 and 8 AAC 30.064, the Commissioner of Labor and Workforce Development has determined the State of Alaska to be a Zone of Underemployment. A Zone of Underemployment requires that Alaska residents who are eligible under AS 36.10.140 be given a minimum of 90 percent employment preference on public works contracts throughout the state in certain job classifications. **This 90 percent Alaska resident hiring preference applies on a project-by-project, craft-by-craft or occupational basis and must be met each workweek by each contractor/subcontractor in each of the following classifications:**

Boilermakers	Electricians	Laborers	Roofers
Bricklayers	Engineers & Architects	Mechanics	Sheet Metal Workers
Carpenters	Equipment Operators	Millwrights	Surveyors
Cement Masons	Foremen & Supervisors	Painters	Truck Drivers
Culinary Workers	Insulation Workers	Piledriving Occupations	Tug Boat Workers
	Ironworkers	Plumbers & Pipefitters	Welders

This determination became effective July 1, 2015, and remains in effect through June 30, 2017. This determination will be applied to projects with a bid submission deadline on or after July 1, 2015 and to projects previously covered by the 2013 Alaska employment preference determination. This will afford contractors an opportunity to consider the impacts of Alaska resident hire in their bids.

The first person on a certified payroll in any classification is called the "first worker" and is not required to be an Alaskan resident. However, once the contractor adds any more workers in the classification, then all workers in the classification are counted, and the 90 percent calculation is applied to compute the number of required Alaskans to be in compliance. To compute the number of Alaskan residents required in a workweek in a particular classification, multiply the total number of workers in the classification by 90 percent. The result is then rounded down to the nearest whole number to determine the number of Alaskans that must be employed in that classification.

If a worker works in more than one classification during a week, the classification in which they spent the most time would be counted for employment preference purposes. If the time is split evenly between two classifications, the worker is counted in both classifications.

If you have difficulty meeting the 90 percent requirement, an approved waiver must be obtained before a non-Alaska resident is hired who would put the contractor/subcontractor out of compliance (8 AAC 30.081 (e) (f)). The waiver process requires proof of an adequate search for qualified Alaskan workers. Qualified Alaska residents identified through the search must be hired before waivers for non-resident workers may be granted. To apply for a waiver, contact the nearest Wage and Hour Office for instructions.

Here is an example to apply the 90 percent requirement to four boilermaker workers. Multiply four workers by 90% and drop the fraction ($.90 \times 4 = 3.6 - .6 = 3$). The remaining number is the number of Alaskan resident boilermakers required to be in compliance in that particular classification for that week.

The penalties for being out of compliance are serious. AS 36.10.100 (a) states "A contractor who violates a provision of this chapter shall have deducted from amounts due to the contractor under the contract the prevailing wages which should have been paid to a displaced resident and these amounts shall be retained by the contracting agency." If a contractor/subcontractor is found to be out of compliance, penalties accumulate until they come into compliance.

Contractors are responsible for determining residency status. If you have difficulty determining whether a worker is an Alaska resident, you should contact the nearest Wage and Hour Office. Contact Wage and Hour in Anchorage at (907) 269-4900, in Fairbanks at (907) 451-2886, or in Juneau at (907) 465-4842.

**Alaska Department of Labor and Workforce Development
Labor Standards & Safety Division
Wage and Hour Administration**

Web site: <http://labor.state.ak.us/lss/pamp600.htm>

Anchorage

1251 Muldoon Road, Suite 113
Anchorage, Alaska 99504-2098
Phone: (907) 269-4900

Email:
anchorage.lss-wh@alaska.gov

Juneau

1111 W. 8th Street, Suite 302
Juneau, Alaska 99801
Phone: (907) 465-4842

Email:
juneau.lss-wh@alaska.gov

Fairbanks

Regional State Office Building
675 7th Ave., Station J-1
Fairbanks, Alaska 99701-4593
Phone: (907) 451-2886

Email:
fairbanks.lss@alaska.gov

DEBARMENT LIST

AS 36.05.090(b) states that “the state disbursing officer or the local fiscal officer shall distribute to all departments of the state government and to all political subdivisions of the state a list giving the names of persons who have disregarded their obligations to employees.”

A person appearing on the following debarment list and a firm, corporation, partnership, or association in which the person has an interest may not work as a contractor or subcontractor on a public construction contract for the state or a political subdivision of the state for three years from the date of debarment.

Company Name

Debarment Expires

Bengal Groups, LLC	November 3, 2017
Mohammed Ali, Individual	November 3, 2017
Fry’s Services, LLC	November 16, 2017
John Paul Freie, Individual	November 16, 2017
Pyramid Audio & Video, Ltd.	June 19, 2018
Jeffrey P. Schneider, Individual	June 19, 2018

Laborers' & Mechanics' Minimum Rates of Pay

Class Code	Classification of Laborers & Mechanics	BHR	H&W	PEN	TRN	Other	Benefits	THR
------------	--	-----	-----	-----	-----	-------	----------	-----

Boilermakers

A0101	Boilermaker (journeyman)	44.26	8.57	15.34	1.60	VAC 3.00	SAF 0.34	73.11
--------------	--------------------------	-------	------	-------	------	----------	----------	-------

Bricklayers & Blocklayers

**See note on last page if remote site

A0201	Blocklayer	40.81	9.53	8.50	0.55	L&M 0.15	0.49	60.03
--------------	------------	-------	------	------	------	----------	------	-------

Bricklayer
Marble or Stone Mason
Refractory Worker (Firebrick, Plastic, Castable, and Gunitite Refractory Applications)
Terrazzo Worker
Tile Setter

A0202	Tuck Pointer Caulker	40.81	9.53	8.50	0.55	L&M 0.15	0.49	60.03
--------------	----------------------	-------	------	------	------	----------	------	-------

Cleaner (PCC)

A0203	Marble & Tile Finisher	34.79	9.53	8.50	0.55	L&M 0.15	0.49	54.01
--------------	------------------------	-------	------	------	------	----------	------	-------

Terrazzo Finisher

A0204	Torginal Applicator	38.83	9.53	8.50	0.55	L&M 0.15	0.49	58.05
--------------	---------------------	-------	------	------	------	----------	------	-------

Carpenters, Statewide

**See note on last page if remote site

A0301	Carpenter (journeyman)	38.34	9.78	14.56	0.70	L&M 0.10	SAF 0.15	63.63
--------------	------------------------	-------	------	-------	------	----------	----------	-------

Lather/Drywall/Acoustical

Cement Masons, Region I (North of N63 latitude)

**See note on last page if remote site

N0401	Group I, including:	37.50	7.43	11.80	1.18	L&M 0.10		58.01
--------------	---------------------	-------	------	-------	------	----------	--	-------

Application of Sealing Compound
Application of Underlayment
Building, General
Cement Mason (journeyman)
Concrete

Wage benefits key: BHR=basic hourly rate; H&W=health and welfare; IAF=industry advancement fund; LEG=legal fund; L&M=labor/management fund; PEN=pension fund; SAF=safety; SUI=supplemental unemployment insurance; S&L=SUI & LEG combined; TRN=training; THR=total hourly rate; VAC=vacation

Class Code	Classification of Laborers & Mechanics	BHR	H&W	PEN	TRN	Other Benefits	THR
------------	--	-----	-----	-----	-----	----------------	-----

Cement Masons, Region I (North of N63 latitude)

**See note on last page if remote site

N0401 Group I, including:	37.50	7.43	11.80	1.18	L&M 0.10	58.01
----------------------------------	-------	------	-------	------	------------------------	-------

- Concrete Paving
- Curb & Gutter, Sidewalk
- Curing of All Concrete
- Grouting & Caulking of Tilt-Up Panels
- Grouting of All Plates
- Patching Concrete
- Screed Pin Setter
- Spackling/Skim Coating

N0402 Group II, including:	37.50	7.43	11.80	1.18	L&M 0.10	58.01
-----------------------------------	-------	------	-------	------	------------------------	-------

- Form Setter

N0403 Group III, including:	37.50	7.43	11.80	1.18	L&M 0.10	58.01
------------------------------------	-------	------	-------	------	------------------------	-------

- Concrete Saw (self-powered)
- Curb & Gutter Machine
- Floor Grinder
- Pneumatic Power Tools
- Power Chipping & Bushing
- Sand Blasting Architectural Finish
- Screed & Rodding Machine Operator
- Troweling Machine Operator

N0404 Group IV, including:	37.50	7.43	11.80	1.18	L&M 0.10	58.01
-----------------------------------	-------	------	-------	------	------------------------	-------

- Application of All Composition Mastic
- Application of All Epoxy Material
- Application of All Plastic Material
- Finish Colored Concrete
- Gunite Nozzleman
- Hand Powered Grinder
- Tunnel Worker

N0405 Group V, including:	37.75	7.43	11.80	1.18	L&M 0.10	58.26
----------------------------------	-------	------	-------	------	------------------------	-------

- Plasterer

Cement Masons, Region II (South of N63 latitude)

**See note on last page if remote site

S0401 Group I, including:	37.25	7.43	11.80	1.18	L&M 0.10	57.76
----------------------------------	-------	------	-------	------	------------------------	-------

Wage benefits key: BHR=basic hourly rate; H&W=health and welfare; IAF=industry advancement fund; LEG=legal fund; L&M=labor/management fund; PEN=pension fund; SAF=safety; SUI=supplemental unemployment insurance; S&L=SUI & LEG combined; TRN=training; THR=total hourly rate; VAC=vacation

Cement Masons, Region II (South of N63 latitude)

**See note on last page if remote site

							L&M	
S0401	Group I, including:	37.25	7.43	11.80	1.18	0.10		57.76
	Application of Sealing Compound							
	Application of Underlayment							
	Building, General							
	Cement Mason (journeyman)							
	Concrete							
	Concrete Paving							
	Curb & Gutter, Sidewalk							
	Curing of All Concrete							
	Grouting & Caulking of Tilt-Up Panels							
	Grouting of All Plates							
	Patching Concrete							
	Screed Pin Setter							
	Spackling/Skim Coating							
S0402	Group II, including:	37.25	7.43	11.80	1.18	0.10		57.76
	Form Setter							
S0403	Group III, including:	37.25	7.43	11.80	1.18	0.10		57.76
	Concrete Saw (self-powered)							
	Curb & Gutter Machine							
	Floor Grinder							
	Pneumatic Power Tools							
	Power Chipping & Bushing							
	Sand Blasting Architectural Finish							
	Screed & Rodding Machine Operator							
	Troweling Machine Operator							
S0404	Group IV, including:	37.25	7.43	11.80	1.18	0.10		57.76
	Application of All Composition Mastic							
	Application of All Epoxy Material							
	Application of All Plastic Material							
	Finish Colored Concrete							
	Guniting Nozzleman							
	Hand Powered Grinder							
	Tunnel Worker							
S0405	Group V, including:	37.50	7.43	11.80	1.18	0.10		58.01
	Plasterer							

Wage benefits key: BHR=basic hourly rate; H&W=health and welfare; IAF=industry advancement fund; LEG=legal fund; L&M=labor/management fund; PEN=pension fund; SAF=safety; SUI=supplemental unemployment insurance; S&L=SUI & LEG combined; TRN=training; THR=total hourly rate; VAC=vacation

Class Code	Classification of Laborers & Mechanics	BHR	H&W	PEN	TRN	Other Benefits	THR
Culinary Workers * See note on last page							
A0501	Baker/Cook	25.67	7.25	6.37		LEG 0.07	39.36
A0503	General Helper	22.62	7.25	6.37		LEG 0.07	36.31
	Housekeeper						
	Janitor						
	Kitchen Helper						
A0504	Head Cook	26.22	7.25	6.37		LEG 0.07	39.91
A0505	Head Housekeeper	23.04	7.25	6.37		LEG 0.07	36.73
	Head Kitchen Help						
Dredgemen							
**See note on last page if remote site							
A0601	Assistant Engineer	39.26	9.95	11.05	1.00	L&M 0.10	61.36
	Craneman						
	Electrical Generator Operator (primary pump/power barge/dredge)						
	Engineer						
	Welder						
A0602	Assistant Mate (deckhand)	38.10	9.95	11.05	1.00	L&M 0.10	60.20
A0603	Fireman	38.54	9.95	11.05	1.00	L&M 0.10	60.64
A0605	Leverman Clamshell	41.79	9.95	11.05	1.00	L&M 0.10	63.89
A0606	Leverman Hydraulic	40.03	9.95	11.05	1.00	L&M 0.10	62.13
A0607	Mate & Boatman	39.26	9.95	11.05	1.00	L&M 0.10	61.36
A0608	Oiler (dredge)	38.54	9.95	11.05	1.00	L&M 0.10	60.64
Electricians							
A0701	Inside Cable Splicer	39.82	12.19	13.01	0.95	L&M 0.20 LEG 0.15	66.32

Wage benefits key: BHR=basic hourly rate; H&W=health and welfare; IAF=industry advancement fund; LEG=legal fund; L&M=labor/management fund; PEN=pension fund; SAF=safety; SUI=supplemental unemployment insurance; S&L=SUI & LEG combined; TRN=training; THR=total hourly rate; VAC=vacation

Class Code	Classification of Laborers & Mechanics	BHR	H&W	PEN	TRN	Other	Benefits	THR
------------	--	-----	-----	-----	-----	-------	----------	-----

Electricians

A0702	Inside Journeyman Wireman, including: Technicians	39.49	12.19	13.25	0.95	L&M	LEG	66.23
A0703	Power Cable Splicer	52.27	12.19	18.76	0.95	L&M	LEG	84.52
A0704	Tele Com Cable Splicer	47.45	12.19	15.44	0.95	L&M	LEG	76.38
A0705	Power Journeyman Lineman, including: Power Equipment Operator Technician	50.52	12.19	18.71	0.95	L&M	LEG	82.72
A0706	Tele Com Journeyman Lineman, including: Technician Tele Com Equipment Operator	45.70	12.19	18.56	0.95	L&M	LEG	77.75
A0707	Straight Line Installer - Repairman	45.70	12.19	15.39	0.95	L&M	LEG	74.58
A0708	Powderman	48.52	12.19	18.65	0.95	L&M	LEG	80.66
A0710	Material Handler	26.15	11.64	4.78	0.15	L&M	LEG	43.02
A0712	Tree Trimmer Groundman	27.17	12.19	11.04	0.15	L&M	LEG	50.85
A0713	Journeyman Tree Trimmer	35.84	12.19	11.30	0.15	L&M	LEG	59.78
A0714	Vegetation Control Sprayer	39.29	12.19	11.40	0.15	L&M	LEG	63.33
A0715	Inside Journeyman Communications CO/PBX	38.07	12.19	12.96	0.95	L&M	LEG	64.52

Elevator Workers

A0802	Elevator Constructor	36.75	14.43	14.96	0.60	L&M	VAC	70.39
A0803	Elevator Constructor Mechanic	52.50	14.43	14.96	0.60	L&M	VAC	88.62

Wage benefits key: BHR=basic hourly rate; H&W=health and welfare; IAF=industry advancement fund; LEG=legal fund; L&M=labor/management fund; PEN=pension fund; SAF=safety; SUI=supplemental unemployment insurance; S&L=SUI & LEG combined; TRN=training; THR=total hourly rate; VAC=vacation

Class Code	Classification of Laborers & Mechanics	BHR	H&W	PEN	TRN	Other	Benefits	THR
------------	--	-----	-----	-----	-----	-------	----------	-----

Heat & Frost Insulators/Asbestos Workers

**See note on last page if remote site

A0902	Asbestos Abatement-Mechanical Systems	37.38	8.84	9.51	1.20		SAF	57.05
A0903	Asbestos Abatement/General Demolition All Systems	37.38	8.84	9.51	1.20		SAF	57.05
A0904	Insulator, Group II	37.38	8.84	9.51	1.20		SAF	57.05
A0905	Fire Stop	37.38	8.84	9.51	1.20		SAF	57.05

IronWorkers

**See note on last page if remote site

A1101	Ironworkers, including:	36.25	8.33	19.87	1.57		L&M	IAF	66.58
	Bender Operators								
	Bridge & Structural								
	Machinery Mover								
	Ornamental								
	Reinforcing								
	Rigger								
	Sheeter								
	Signalman								
	Stage Rigger								
	Toxic Haz-Mat Work								
	Welder								
A1102	Helicopter	37.25	8.33	19.87	1.57		L&M	IAF	67.58
	Tower (energy producing windmill type towers to include nacelle and blades)								
A1103	Fence/Barrier Installer	32.75	8.33	19.62	1.47		L&M	IAF	62.73
	Guard Rail Installer								
A1104	Guard Rail Layout Man	33.49	8.33	19.62	1.47		L&M	IAF	63.47

Laborers (The Alaska areas north of N63 latitude and east of W138 longitude)

**See note on last page if remote site

N1201	Group I, including:	30.00	7.71	17.06	1.20		L&M	LEG	56.37
	Asphalt Worker (shovelman, plant crew)								

Wage benefits key: BHR=basic hourly rate; H&W=health and welfare; IAF=industry advancement fund; LEG=legal fund; L&M=labor/management fund; PEN=pension fund; SAF=safety; SUI=supplemental unemployment insurance; S&L=SUI & LEG combined; TRN=training; THR=total hourly rate; VAC=vacation

Laborers (The Alaska areas north of N63 latitude and east of W138 longitude)

**See note on last page if remote site

					L&M	LEG	
N1201	Group I, including:	30.00	7.71	17.06	1.20	0.20	0.20 56.37
	Brush Cutter						
	Camp Maintenance Laborer						
	Carpenter Tender or Helper						
	Choke Setter, Hook Tender, Rigger, Signalman						
	Concrete Labor (curb & gutter, chute handler, grouting, curing, screeding)						
	Crusher Plant Laborer						
	Demolition Laborer						
	Ditch Digger						
	Dumpman						
	Environmental Laborer (hazard/toxic waste, oil spill)						
	Fence Installer						
	Fire Watch Laborer						
	Flagman						
	Form Stripper						
	General Laborer						
	Guardrail Laborer, Bridge Rail Installer						
	Hydro-seeder Nozzleman						
	Laborer, Building						
	Landscaper or Planter						
	Laying of Mortarless Decorative Block (retaining walls, flowered decorative block 4 feet or less - highway or landscape work)						
	Material Handler						
	Pneumatic or Power Tools						
	Portable or Chemical Toilet Serviceman						
	Pump Man or Mixer Man						
	Railroad Track Laborer						
	Sandblast, Pot Tender						
	Saw Tender						
	Slurry Work						
	Steam Cleaner Operator						
	Steam Point or Water Jet Operator						
	Storm Water Pollution Protection Plan Worker (SWPPP Worker - erosion and sediment control Laborer)						
	Tank Cleaning						
	Utiliwalk & Utilidor Laborer						
	Watchman (construction projects)						
	Window Cleaner						

					L&M	LEG	
N1202	Group II, including:	31.00	7.71	17.06	1.20	0.20	0.20 57.37

- Burning & Cutting Torch
- Cement or Lime Dumper or Handler (sack or bulk)

Wage benefits key: BHR=basic hourly rate; H&W=health and welfare; IAF=industry advancement fund; LEG=legal fund; L&M=labor/management fund; PEN=pension fund; SAF=safety; SUI=supplemental unemployment insurance; S&L=SUI & LEG combined; TRN=training; THR=total hourly rate; VAC=vacation

Laborers (The Alaska areas north of N63 latitude and east of W138 longitude)

**See note on last page if remote site

					L&M	LEG	
N1202	Group II, including:	31.00	7.71	17.06	1.20	0.20	57.37
	Certified Erosion Sediment Control Lead (CESCL Laborer)						
	Choker Splicer						
	Chucktender (wagon, air-track & hydraulic drills)						
	Concrete Laborer (power buggy, concrete saws, pumpcrete nozzleman, vibratorman)						
	Culvert Pipe Laborer						
	Cured Inplace Pipelayer						
	Environmental Laborer (asbestos, marine work)						
	Foam Gun or Foam Machine Operator						
	Green Cutter (dam work)						
	Gunite Operator						
	Hod Carrier						
	Jackhammer or Pavement Breaker (more than 45 pounds)						
	Laser Instrument Operator						
	Laying of Mortarless Decorative Block (retaining walls, flowered decorative block over 4 feet - highway or landscape work)						
	Mason Tender & Mud Mixer (sewer work)						
	Pilot Car						
	Pipelayer Helper						
	Plasterer, Bricklayer & Cement Finisher Tender						
	Powderman Helper						
	Power Saw Operator						
	Railroad Switch Layout Laborer						
	Sandblaster						
	Scaffold Building & Erecting						
	Sewer Caulker						
	Sewer Plant Maintenance Man						
	Thermal Plastic Applicator						
	Timber Faller, Chainsaw Operator, Filer						
	Timberman						

					L&M	LEG	
N1203	Group III, including:	31.90	7.71	17.06	1.20	0.20	58.27
	Bit Grinder						
	Camera/Tool/Video Operator						
	Guardrail Machine Operator						
	High Rigger & Tree Topper						
	High Scaler						
	Multiplate						
	Plastic Welding						
	Slurry Seal Squeegee Man						
	Traffic Control Supervisor						

Wage benefits key: BHR=basic hourly rate; H&W=health and welfare; IAF=industry advancement fund; LEG=legal fund; L&M=labor/management fund; PEN=pension fund; SAF=safety; SUI=supplemental unemployment insurance; S&L=SUI & LEG combined; TRN=training; THR=total hourly rate; VAC=vacation

Laborers (The Alaska areas north of N63 latitude and east of W138 longitude)

**See note on last page if remote site

						L&M	LEG	
N1203	Group III, including:	31.90	7.71	17.06	1.20	0.20	0.20	58.27

Welding Certified (in connection with laborer's work)

						L&M	LEG	
N1204	Group IIIA	35.18	7.71	17.06	1.20	0.20	0.20	61.55

Asphalt Raker, Asphalt Belly Dump Lay Down
 Drill Doctor (in the field)
 Driller (including, but not limited to, wagon drills, air-track drills, hydraulic drills)
 Licensed Powderman
 Pioneer Drilling & Drilling Off Tugger (all type drills)
 Pipelayers
 Storm Water Pollution Protection Plan Specialist (SWPPP Specialist)

						L&M	LEG	
N1205	Group IV	19.57	7.71	17.06	1.20	0.20	0.20	45.94

Final Building Cleanup
 Permanent Yard Worker

						L&M	LEG	
N1206	Group IIIB	38.72	5.00	17.06	1.20	0.20	0.20	62.38

Federally Licensed Powderman (Responsible Person in Charge)
 Grade Checking (setting or transferring of grade marks, line and grade, Stake Hopper)

Laborers (The area that is south of N63 latitude and west of W138 longitude)

**See note on last page if remote site

						L&M	LEG	
S1201	Group I, including:	30.00	7.71	17.06	1.20	0.20	0.20	56.37

Asphalt Worker (shovelman, plant crew)
 Brush Cutter
 Camp Maintenance Laborer
 Carpenter Tender or Helper
 Choke Setter, Hook Tender, Rigger, Signalman
 Concrete Labor (curb & gutter, chute handler, grouting, curing, screeding)
 Crusher Plant Laborer
 Demolition Laborer
 Ditch Digger
 Dumpman
 Environmental Laborer (hazard/toxic waste, oil spill)
 Fence Installer
 Fire Watch Laborer
 Flagman

Wage benefits key: BHR=basic hourly rate; H&W=health and welfare; IAF=industry advancement fund; LEG=legal fund; L&M=labor/management fund; PEN=pension fund; SAF=safety; SUI=supplemental unemployment insurance; S&L=SUI & LEG combined; TRN=training; THR=total hourly rate; VAC=vacation

Laborers (The area that is south of N63 latitude and west of W138 longitude)

**See note on last page if remote site

					L&M	LEG	
S1201	Group I, including:	30.00	7.71	17.06	1.20	0.20	56.37
	Form Stripper						
	General Laborer						
	Guardrail Laborer, Bridge Rail Installer						
	Hydro-seeder Nozzleman						
	Laborer, Building						
	Landscaper or Planter						
	Laying of Mortarless Decorative Block (retaining walls, flowered decorative block 4 feet or less - highway or landscape work)						
	Material Handler						
	Pneumatic or Power Tools						
	Portable or Chemical Toilet Serviceman						
	Pump Man or Mixer Man						
	Railroad Track Laborer						
	Sandblast, Pot Tender						
	Saw Tender						
	Slurry Work						
	Steam Cleaner Operator						
	Steam Point or Water Jet Operator						
	Storm Water Pollution Protection Plan Worker (SWPPP Worker - erosion and sediment control Laborer)						
	Tank Cleaning						
	Utiliwalk & Utilidor Laborer						
	Watchman (construction projects)						
	Window Cleaner						
S1202	Group II, including:	31.00	7.71	17.06	1.20	0.20	57.37
	Burning & Cutting Torch						
	Cement or Lime Dumper or Handler (sack or bulk)						
	Certified Erosion Sediment Control Lead (CESCL Laborer)						
	Choker Splicer						
	Chucktender (wagon, air-track & hydraulic drills)						
	Concrete Laborer (power buggy, concrete saws, pumpcrete nozzleman, vibratorman)						
	Culvert Pipe Laborer						
	Cured Inplace Pipelayer						
	Environmental Laborer (asbestos, marine work)						
	Foam Gun or Foam Machine Operator						
	Green Cutter (dam work)						
	Gunite Operator						
	Hod Carrier						
	Jackhammer or Pavement Breaker (more than 45 pounds)						

Wage benefits key: BHR=basic hourly rate; H&W=health and welfare; IAF=industry advancement fund; LEG=legal fund; L&M=labor/management fund; PEN=pension fund; SAF=safety; SUI=supplemental unemployment insurance; S&L=SUI & LEG combined; TRN=training; THR=total hourly rate; VAC=vacation

Laborers (The area that is south of N63 latitude and west of W138 longitude)
 **See note on last page if remote site

						L&M	LEG	
S1202	Group II, including:	31.00	7.71	17.06	1.20	0.20	0.20	57.37

- Laser Instrument Operator
- Laying of Mortarless Decorative Block (retaining walls, flowered decorative block over 4 feet - highway or landscape work)
- Mason Tender & Mud Mixer (sewer work)
- Pilot Car
- Pipelayer Helper
- Plasterer, Bricklayer & Cement Finisher Tender
- Powderman Helper
- Power Saw Operator
- Railroad Switch Layout Laborer
- Sandblaster
- Scaffold Building & Erecting
- Sewer Caulker
- Sewer Plant Maintenance Man
- Thermal Plastic Applicator
- Timber Faller, Chainsaw Operator, Filer
- Timberman

						L&M	LEG	
S1203	Group III, including:	31.90	7.71	17.06	1.20	0.20	0.20	58.27

- Bit Grinder
- Camera/Tool/Video Operator
- Guardrail Machine Operator
- High Rigger & Tree Topper
- High Scaler
- Multiplate
- Plastic Welding
- Slurry Seal Squeegee Man
- Traffic Control Supervisor
- Welding Certified (in connection with laborer's work)

						L&M	LEG	
S1204	Group IIIA	35.18	7.71	17.06	1.20	0.20	0.20	61.55

- Asphalt Raker, Asphalt Belly Dump Lay Down
- Drill Doctor (in the field)
- Driller (including, but not limited to, wagon drills, air-track drills, hydraulic drills)
- Licensed Powderman
- Pioneer Drilling & Drilling Off Tugger (all type drills)
- Pipelayers
- Storm Water Pollution Protection Plan Specialist (SWPPP Specialist)

Wage benefits key: BHR=basic hourly rate; H&W=health and welfare; IAF=industry advancement fund; LEG=legal fund; L&M=labor/management fund; PEN=pension fund; SAF=safety; SUI=supplemental unemployment insurance; S&L=SUI & LEG combined; TRN=training; THR=total hourly rate; VAC=vacation

Laborers (The area that is south of N63 latitude and west of W138 longitude)

**See note on last page if remote site

S1205	Group IV	19.57	7.71	17.06	1.20	L&M	LEG	45.94
--------------	----------	-------	------	-------	------	----------------	------------	-------

Final Building Cleanup
Permanent Yard Worker

S1206	Group IIIB	38.72	5.00	17.06	1.20	L&M	LEG	62.38
--------------	------------	-------	------	-------	------	----------------	------------	-------

Federally Licensed Powderman (Responsible Person in Charge)
Grade Checking (setting or transferring of grade marks, line and grade,
Stake Hopper)

Millwrights

A1251	Millwright (journeyman)	36.74	9.78	12.21	1.00	L&M	0.05	60.18
--------------	-------------------------	-------	------	-------	------	----------------	------	-------

A1252	Millwright Welder	37.74	9.78	12.21	1.00	L&M	0.05	61.18
--------------	-------------------	-------	------	-------	------	----------------	------	-------

Painters, Region I (North of N63 latitude)

**See note on last page if remote site

N1301	Group I, including:	32.07	8.03	11.10	1.08	L&M	0.07	52.35
--------------	---------------------	-------	------	-------	------	----------------	------	-------

Brush
General Painter
Hand Taping
Hazardous Material Handler
Lead-Based Paint Abatement
Roll

N1302	Group II, including:	32.59	8.03	11.10	1.08	L&M	0.07	52.87
--------------	----------------------	-------	------	-------	------	----------------	------	-------

Bridge Painter
Epoxy Applicator
General Drywall Finisher
Hand/Spray Texturing
Industrial Coatings Specialist
Machine/Automatic Taping
Pot Tender
Sandblasting
Specialty Painter
Spray
Structural Steel Painter

Wage benefits key: BHR=basic hourly rate; H&W=health and welfare; IAF=industry advancement fund; LEG=legal fund; L&M=labor/management fund; PEN=pension fund; SAF=safety; SUI=supplemental unemployment insurance; S&L=SUI & LEG combined; TRN=training; THR=total hourly rate; VAC=vacation

Class Code	Classification of Laborers & Mechanics	BHR	H&W	PEN	TRN	Other Benefits	THR
------------	--	-----	-----	-----	-----	----------------	-----

Painters, Region I (North of N63 latitude)

**See note on last page if remote site

N1302	Group II, including:	32.59	8.03	11.10	1.08	L&M 0.07	52.87
	Wallpaper/Vinyl Hanger						
N1304	Group IV, including:	38.13	8.03	12.11	1.05	0.05	59.37
	Glazier						
	Storefront/Automatic Door Mechanic						
N1305	Group V, including:	29.31	8.03	5.02	0.83	0.07	43.26
	Carpet Installer						
	Floor Coverer						
	Heat Weld/Cove Base						
	Linoleum/Soft Tile Installer						

Painters, Region II (South of N63 latitude)

**See note on last page if remote site

S1301	Group I, including :	30.31	8.03	10.85	1.08	L&M 0.07	50.34
	Brush						
	General Painter						
	Hand Taping						
	Hazardous Material Handler						
	Lead-Based Paint Abatement						
	Roll						
	Spray						
S1302	Group II, including :	31.56	8.03	10.85	1.08	L&M 0.07	51.59
	General Drywall Finisher						
	Hand/Spray Texturing						
	Machine/Automatic Taping						
	Wallpaper/Vinyl Hanger						
S1303	Group III, including :	31.66	8.03	10.85	1.08	L&M 0.07	51.69
	Bridge Painter						
	Epoxy Applicator						
	Industrial Coatings Specialist						
	Pot Tender						
	Sandblasting						
	Specialty Painter						
	Structural Steel Painter						

Wage benefits key: BHR=basic hourly rate; H&W=health and welfare; IAF=industry advancement fund; LEG=legal fund; L&M=labor/management fund; PEN=pension fund; SAF=safety; SUI=supplemental unemployment insurance; S&L=SUI & LEG combined; TRN=training; THR=total hourly rate; VAC=vacation

Class Code	Classification of Laborers & Mechanics	BHR	H&W	PEN	TRN	Other	Benefits	THR
------------	--	-----	-----	-----	-----	-------	----------	-----

Painters, Region II (South of N63 latitude)

**See note on last page if remote site

S1304	Group IV, including:	38.13	8.03	11.36	1.08		L&M	58.67
	Glazier							
	Storefront/Automatic Door Mechanic							

S1305	Group V, including:	29.31	8.03	5.02	0.83		L&M	43.26
	Carpet Installer							
	Floor Coverer							
	Heat Weld/Cove Base							
	Linoleum/Soft Tile Installer							

Piledrivers

**See note on last page if remote site

A1401	Piledriver	38.34	9.78	14.56	0.70		L&M	IAF	63.63
	Assistant Dive Tender								
	Carpenter/Piledriver								
	Rigger								
	Sheet Stabber								
	Skiff Operator								

A1402	Piledriver-Welder/Toxic Worker	39.34	9.78	14.56	0.70		L&M	IAF	64.63
--------------	--------------------------------	-------	------	-------	------	--	----------------	------------	-------

A1403	Remotely Operated Vehicle Pilot/Technician	42.65	9.78	14.56	0.70		L&M	IAF	67.94
	Single Atmosphere Suit, Bell or Submersible Pilot								

A1404	Diver (working) ***See note on last page	82.45	9.78	14.56	0.70		L&M	IAF	107.74
--------------	--	-------	------	-------	------	--	----------------	------------	--------

A1405	Diver (standby) ***See note on last page	42.65	9.78	14.56	0.70		L&M	IAF	67.94
--------------	--	-------	------	-------	------	--	----------------	------------	-------

A1406	Dive Tender ***See note on last page	41.65	9.78	14.56	0.70		L&M	IAF	66.94
--------------	--------------------------------------	-------	------	-------	------	--	----------------	------------	-------

A1407	Welder (American Welding Society, Certified Welding Inspector)	43.90	9.78	14.56	0.70		L&M	IAF	69.19
--------------	--	-------	------	-------	------	--	----------------	------------	-------

Plumbers, Region I (North of N63 latitude)

N1501	Journeyman Pipefitter	40.81	8.25	14.60	1.25		L&M	S&L	66.01
	Plumber								

Wage benefits key: BHR=basic hourly rate; H&W=health and welfare; IAF=industry advancement fund; LEG=legal fund; L&M=labor/management fund; PEN=pension fund; SAF=safety; SUI=supplemental unemployment insurance; S&L=SUI & LEG combined; TRN=training; THR=total hourly rate; VAC=vacation

Plumbers, Region I (North of N63 latitude)

N1501	Journeyman Pipefitter	40.81	8.25	14.60	1.25	L&M	S&L	66.01
--------------	-----------------------	-------	------	-------	------	-----	-----	-------

Welder

Plumbers, Region II (South of N63 latitude)

S1501	Journeyman Pipefitter	39.85	8.88	12.72	1.25	L&M		62.90
--------------	-----------------------	-------	------	-------	------	-----	--	-------

Plumber

Welder

Plumbers, Region IIA (1st Judicial District)

X1501	Journeyman Pipefitter	37.52	12.72	11.25	2.50	L&M		64.23
--------------	-----------------------	-------	-------	-------	------	-----	--	-------

Plumber

Welder

Power Equipment Operators
 **See note on last page if remote site

A1601	Group I, including:	40.03	9.95	11.05	1.00	L&M		62.13
--------------	---------------------	-------	------	-------	------	-----	--	-------

- Asphalt Roller: Breakdown, Intermediate, and Finish
- Back Filler
- Barrier Machine (Zipper)
- Beltcrete with Power Pack & similar conveyors
- Bending Machine
- Boat Coxswain
- Bulldozer
- Cableways, Highlines & Cablecars
- Cleaning Machine
- Coating Machine
- Concrete Hydro Blaster
- Cranes (45 tons & under or 150 feet of boom & under (including jib & attachments))
 - (a) Hydralifts or Transporters, (all track or truck type)
 - (b) Derricks
 - (c) Overhead
- Crushers
- Deck Winches, Double Drum
- Ditching or Trenching Machine (16 inch or over)

Wage benefits key: BHR=basic hourly rate; H&W=health and welfare; IAF=industry advancement fund; LEG=legal fund; L&M=labor/management fund; PEN=pension fund; SAF=safety; SUI=supplemental unemployment insurance; S&L=SUI & LEG combined; TRN=training; THR=total hourly rate; VAC=vacation

Power Equipment Operators

**See note on last page if remote site

					L&M	
A1601 Group I, including:	40.03	9.95	11.05	1.00	0.10	62.13
Drag Scraper, Yarder, and similar types						
Drilling Machines, Core, Cable, Rotary and Exploration						
Finishing Machine Operator, Concrete Paving, Laser Screed, Sidewalk, Curb & Gutter Machine						
Helicopters						
Hover Craft, Flex Craft, Loadmaster, Air Cushion, All-Terrain Vehicle, Rollagon, Bargecable, Nodwell, & Snow Cat						
Hydro Ax, Feller Buncher & similar						
Hydro Excavation (Vac-Truck and Similar)						
Licensed Line & Grade						
Loaders (2 1/2 yards through 5 yards, including all attachments):						
(a) Forklifts (with telescopic boom & swing attachment)						
(b) Front End & Overhead, (2-1/2 yards through 5 yards)						
(c) Loaders, (with forks or pipe clamp)						
(d) Loaders, (elevating belt type, Euclid & similar types)						
Material Transfer Vehicle (Elevating Grader, Pickup Machine, and similar types)						
Mechanic, Welder, Bodyman, Electrical, Camp & Maintenance Engineer						
Micro Tunneling Machine						
Mixers: Mobile type with hoist combination						
Motor Patrol Grader						
Mucking Machine: Mole, Tunnel Drill, Horizontal/Directional Drill Operator and/or Shield						
Operator on Dredges						
Piledriver Engineer, L.B. Foster, Puller or similar paving breaker						
Plant Operator (Asphalt & Concrete)						
Power Plant, Turbine Operator 200 k.w & over (power plants or combination of power units over 300 k.w.)						
Remote Controlled Equipment						
Scraper (through 40 yards)						
Service Oiler/Service Engineer						
Shot Blast Machine						
Shovels, Backhoes, Excavators with all attachments, and Gradealls (3 yards & under)						
Sideboom (under 45 tons)						
Spreaders Topside (Asphalt Paver, Slurry machine, and similar types)						
Sub Grader (Gurries, Reclaimer & similar types)						
Tack Tractor						
Truck Mounted Concrete Pump, Conveyor/Tele-belt, & Creter						
Unlicensed Off-Road Hauler						
Wate Kote Machine						

Wage benefits key: BHR=basic hourly rate; H&W=health and welfare; IAF=industry advancement fund; LEG=legal fund; L&M=labor/management fund; PEN=pension fund; SAF=safety; SUI=supplemental unemployment insurance; S&L=SUI & LEG combined; TRN=training; THR=total hourly rate; VAC=vacation

Power Equipment Operators

**See note on last page if remote site

A1602 Group IA, including:	41.79	9.95	11.05	1.00	L&M		0.10	63.89
-----------------------------------	-------	------	-------	------	----------------	--	------	-------

- Camera/Tool/Video Operator (Slipline)
- Certified Welder, Electrical Mechanic, Camp Maintenance Engineer, Mechanic (over 10,000 hours)
- Cranes (over 45 tons or 150 feet including jib & attachments)
 - (a) Clamshells & Draglines (over 3 yards)
 - (b) Tower Cranes
- Licensed Water/Waste Water Treatment Operator
- Loaders (over 5 yards)
- Motor Patrol Grader, Dozer, Grade Tractor, Roto-Mill/Profiler (finish: when finishing to final grade and/or to hubs, or for asphalt)
- Power Plants (1000 k.w. & over)
- Quad
- Scrapers (over 40 yards)
- Screed
- Shovels, Backhoes, Excavators with all attachments (over 3 yards)
- Sidebooms (over 45 tons)
- Slip Form Paver, C.M.I. & similar types

A1603 Group II, including:	39.26	9.95	11.05	1.00	L&M		0.10	61.36
-----------------------------------	-------	------	-------	------	----------------	--	------	-------

- Boiler - Fireman
- Cement Hogs & Concrete Pump Operator
- Conveyors (except those listed in Group I)
- Grade Checker
- Hoists on Steel Erection, Towermobiles & Air Tuggers
- Horizontal/Directional Drill Locator
- Licensed Grade Technician
- Locomotives, Rod & Geared Engines
- Mixers
- Screening, Washing Plant
- Sideboom (cradling rock drill, regardless of size)
- Skidder
- Trenching Machines (under 16 inches)
- Water/Waste Water Treatment Operator

A1604 Group III, including:	38.54	9.95	11.05	1.00	L&M		0.10	60.64
------------------------------------	-------	------	-------	------	----------------	--	------	-------

- "A" Frame Trucks, Deck Winches
- Bombardier (tack or tow rig)
- Boring Machine
- Brooms, Power
- Bump Cutter

Wage benefits key: BHR=basic hourly rate; H&W=health and welfare; IAF=industry advancement fund; LEG=legal fund; L&M=labor/management fund; PEN=pension fund; SAF=safety; SUI=supplemental unemployment insurance; S&L=SUI & LEG combined; TRN=training; THR=total hourly rate; VAC=vacation

Sheet Metal Workers, Region I (North of N63 latitude)

						L&M	
N1801	Sheet Metal Journeyman	47.13	10.16	10.64	1.45	0.12	69.50

- Air Balancing and duct cleaning of HVAC systems
- Brazing, soldering or welding of metals
- Demolition of sheet metal HVAC systems
- Fabrication and installation of exterior wall sheathing, siding, metal roofing, flashing, decking and architectural sheet metal work
- Fabrication and installation of heating, ventilation and air conditioning ducts and equipment
- Fabrication and installation of louvers and hoods
- Fabrication and installation of sheet metal lagging
- Fabrication and installation of stainless steel commercial or industrial food service equipment
- Manufacture, fabrication assembly, installation and alteration of all ferrous and nonferrous metal work
- Metal lavatory partitions
- Preparation of drawings taken from architectural and engineering plans required for fabrication and erection of sheet metal work
- Sheet Metal shelving
- Sheet Metal venting, chimneys and breaching
- Skylight installation

Sheet Metal Workers, Region II (South of N63 latitude)

						L&M	
S1801	Sheet Metal Journeyman	41.38	10.16	12.25	1.22	0.37	65.38

- Air Balancing and duct cleaning of HVAC systems
- Brazing, soldering or welding of metals
- Demolition of sheet metal HVAC systems
- Fabrication and installation of exterior wall sheathing, siding, metal roofing, flashing, decking and architectural sheet metal work
- Fabrication and installation of heating, ventilation and air conditioning ducts and equipment
- Fabrication and installation of louvers and hoods
- Fabrication and installation of sheet metal lagging
- Fabrication and installation of stainless steel commercial or industrial food service equipment
- Manufacture, fabrication assembly, installation and alteration of all ferrous and nonferrous metal work
- Metal lavatory partitions
- Preparation of drawings taken from architectural and engineering plans required for fabrication and erection of sheet metal work
- Sheet Metal shelving
- Sheet Metal venting, chimneys and breaching

Wage benefits key: BHR=basic hourly rate; H&W=health and welfare; IAF=industry advancement fund; LEG=legal fund; L&M=labor/management fund; PEN=pension fund; SAF=safety; SUI=supplemental unemployment insurance; S&L=SUI & LEG combined; TRN=training; THR=total hourly rate; VAC=vacation

Class Code	Classification of Laborers & Mechanics	BHR	H&W	PEN	TRN	Other Benefits	THR
------------	--	-----	-----	-----	-----	----------------	-----

Sheet Metal Workers, Region II (South of N63 latitude)

S1801	Sheet Metal Journeyman	41.38	10.16	12.25	1.22	L&M 0.37	65.38
--------------	------------------------	-------	-------	-------	------	------------------------	-------

Skylight installation

Sprinkler Fitters

A1901	Sprinkler Fitter	44.75	8.77	13.35	0.45	L&M 0.25	67.57
--------------	------------------	-------	------	-------	------	------------------------	-------

Surveyors

**See note on last page if remote site

A2001	Chief of Parties	42.81	10.58	10.39	1.35	L&M 0.10	65.23
--------------	------------------	-------	-------	-------	------	------------------------	-------

A2002	Party Chief	41.22	10.58	10.39	1.35	L&M 0.10	63.64
--------------	-------------	-------	-------	-------	------	------------------------	-------

A2003	Line & Grade Technician/Office Technician	40.62	10.58	10.39	1.35	L&M 0.10	63.04
--------------	---	-------	-------	-------	------	------------------------	-------

A2004	Associate Party Chief (including Instrument Person & Head Chain Person)	38.50	10.58	10.39	1.35	L&M 0.10	60.92
--------------	---	-------	-------	-------	------	------------------------	-------

A2005	Stake Hop/Grademan	35.57	10.58	10.39	1.35	L&M 0.10	57.99
--------------	--------------------	-------	-------	-------	------	------------------------	-------

A2006	Chain Person (for crews with more than 2 people)	34.16	10.58	10.39	1.35	L&M 0.10	56.58
--------------	--	-------	-------	-------	------	------------------------	-------

Truck Drivers

**See note on last page if remote site

A2101	Group I, including:	39.59	10.58	10.39	1.35	L&M 0.10	62.01
--------------	---------------------	-------	-------	-------	------	------------------------	-------

- Air/Sea Traffic Controllers
- Ambulance/Fire Truck Driver (EMT certified)
- Boat Coxswain
- Captains & Pilots (air & water)
- Deltas, Commanders, Rollagons, & similar equipment (when pulling sleds, trailers or similar equipment)
- Dump Trucks (including rockbuggy & trucks with pups) over 40 yards up to & including 60 yards
- Helicopter Transporter
- Lowboys, including attached trailers & jeeps, up to & including 12 axles (over 12 axles or 150 tons to be negotiated)

Wage benefits key: BHR=basic hourly rate; H&W=health and welfare; IAF=industry advancement fund; LEG=legal fund; L&M=labor/management fund; PEN=pension fund; SAF=safety; SUI=supplemental unemployment insurance; S&L=SUI & LEG combined; TRN=training; THR=total hourly rate; VAC=vacation

Truck Drivers

**See note on last page if remote site

						L&M	
A2101	Group I, including:	39.59	10.58	10.39	1.35	0.10	62.01
	Material Coordinator and Purchasing Agent						
	Ready-mix (over 12 yards up to & including 15 yards) (over 15 yards to be negotiated)						
	Semi with Double Box Mixer						
	Tireman, Heavy Duty/Fueler						
	Water Wagon (250 Bbls and above)						
A2102	Group 1A including:	40.86	10.58	10.39	1.35	0.10	63.28
	Dump Trucks (including rockbuggy & trucks with pups) over 60 yards up to & including 100 yards (over 100 yards to be negotiated)						
	Jeeps (driver under load)						
A2103	Group II, including:	38.33	10.58	10.39	1.35	0.10	60.75
	All Deltas, Commanders, Rollagons, & similar equipment						
	Boom Truck/Knuckle Truck (over 5 tons)						
	Construction and Material Safety Technician						
	Dump Trucks (including rockbuggy & trucks with pups) over 20 yards up to & including 40 yards						
	Gin Pole Truck, Winch Truck, Wrecker (truck mounted "A" frame manufactured rating over 5 tons)						
	Lowboys (including attached trailers & jeeps up to & including 8 axles)						
	Mechanics						
	Partsman						
	Ready-mix (over 7 yards up to & including 12 yards)						
	Stringing Truck						
	Super Vac Truck/Cacasco Truck/Heat Stress Truck						
	Turn-O-Wagon or DW-10 (not self loading)						
A2104	Group III, including:	37.51	10.58	10.39	1.35	0.10	59.93
	Batch Trucks (8 yards & up)						
	Boom Truck/Knuckle Truck (up to & including 5 tons)						
	Dump Trucks (including rockbuggy & trucks with pups) over 10 yards up to & including 20 yards						
	Expeditor (electrical & pipefitting materials)						
	Gin Pole Truck, Winch Truck, Wrecker (truck mounted "A" frame manufactured rating 5 tons & under)						
	Greaser - Shop						
	Oil Distributor Driver						
	Thermal Plastic Layout Technician						
	Traffic Control Technician						

Wage benefits key: BHR=basic hourly rate; H&W=health and welfare; IAF=industry advancement fund; LEG=legal fund; L&M=labor/management fund; PEN=pension fund; SAF=safety; SUI=supplemental unemployment insurance; S&L=SUI & LEG combined; TRN=training; THR=total hourly rate; VAC=vacation

Truck Drivers

**See note on last page if remote site

A2104 Group III, including:	37.51	10.58	10.39	1.35	0.10	L&M	59.93
------------------------------------	-------	-------	-------	------	------	----------------	-------

Trucks/Jeeps (push or pull)

A2105 Group IV, including:	36.93	10.58	10.39	1.35	0.10	L&M	59.35
-----------------------------------	-------	-------	-------	------	------	----------------	-------

- Air Cushion or similar type vehicle
- All Terrain Vehicle
- Buggymobile
- Bull Lift & Fork Lift, Fork Lift with Power Boom & Swing Attachment (over 5 tons)
- Bus Operator (over 30 passengers)
- Combination Truck-Fuel & Grease
- Compactor (when pulled by rubber tired equipment)
- Dump Trucks (including Rockbuggy & trucks with pups up to & including 10 yards)
- Dumpster
- Expeditor (general)
- Fire Truck/Ambulance Driver
- Flat Beds, Dual Rear Axle
- Foam Distributor Truck Dual Axle
- Front End Loader with Fork
- Grease Truck
- Hydro Seeder, Dual Axle
- Hyster Operators (handling bulk aggregate)
- Loadmaster (air & water operations)
- Lumber Carrier
- Ready-mix, (up to & including 7 yards)
- Rigger (air/water/oilfield)
- Semi or Truck & Trailer
- Tireman, Light Duty
- Track Truck Equipment
- Vacuum Truck, Truck Vacuum Sweeper
- Warehouseperson
- Water Truck (Below 250 Bbls)
- Water Truck, Dual Axle
- Water Wagon, Semi

A2106 Group V, including:	36.17	10.58	10.39	1.35	0.10	L&M	58.59
----------------------------------	-------	-------	-------	------	------	----------------	-------

- Batch Truck (up to & including 7 yards)
- Buffer Truck
- Bull Lifts & Fork Lifts, Fork Lifts with Power Boom & Swing Attachments (up to & including 5 tons)

Wage benefits key: BHR=basic hourly rate; H&W=health and welfare; IAF=industry advancement fund; LEG=legal fund; L&M=labor/management fund; PEN=pension fund; SAF=safety; SUI=supplemental unemployment insurance; S&L=SUI & LEG combined; TRN=training; THR=total hourly rate; VAC=vacation

Truck Drivers
 **See note on last page if remote site

						L&M	
A2106	Group V, including:	36.17	10.58	10.39	1.35	0.10	58.59
	Bus Operator (up to 30 passengers)						
	Farm Type Rubber Tired Tractor (when material handling or pulling wagons on a construction project)						
	Flat Beds, Single Rear Axle						
	Foam Distributor Truck Single Axle						
	Fuel Handler (station/bulk attendant)						
	Gear/Supply Truck						
	Gravel Spreader Box Operator on Truck						
	Hydro Seeders, Single axle						
	Pickups (pilot cars & all light-duty vehicles)						
	Rigger/Swamper						
	Tack Truck						
	Team Drivers (horses, mules, & similar equipment)						

Tunnel Workers, Laborers (The Alaska areas north of N63 latitude and east of W138 longitude)
 **See note on last page if remote site

						L&M	LEG
N2201	Group I, including:	33.00	7.71	17.06	1.20	0.20	59.37
	Brakeman						
	Mucker						
	Nipper						
	Storm Water Pollution Protection Plan Worker (SWPPP Worker - erosion and sediment control Laborer)						
	Topman & Bull Gang						
	Tunnel Track Laborer						

						L&M	LEG
N2202	Group II, including:	34.10	7.71	17.06	1.20	0.20	60.47
	Burning & Cutting Torch						
	Certified Erosion Sediment Control Lead (CESCL Laborer)						
	Concrete Laborer						
	Jackhammer						
	Laser Instrument Operator						
	Nozzlemen, Pumpcrete or Shotcrete						
	Pipelayer Helper						

						L&M	LEG
N2203	Group III, including:	35.09	7.71	17.06	1.20	0.20	61.46
	Miner						
	Retimberman						

Wage benefits key: BHR=basic hourly rate; H&W=health and welfare; IAF=industry advancement fund; LEG=legal fund; L&M=labor/management fund; PEN=pension fund; SAF=safety; SUI=supplemental unemployment insurance; S&L=SUI & LEG combined; TRN=training; THR=total hourly rate; VAC=vacation

Tunnel Workers, Laborers (The Alaska areas north of N63 latitude and east of W138 longitude)

**See note on last page if remote site

					L&M	LEG	
N2204	Group IIIA, including:	38.70	7.71	17.06	1.20	0.20	65.07
	Asphalt Raker, Asphalt Belly Dump Lay Down						
	Drill Doctor (in the field)						
	Driller (including, but not limited to wagon drills, air-track drills, hydraulic drills)						
	Licensed Powderman						
	Pioneer Drilling & Drilling Off Tugger (all type drills)						
	Pipelayer						
	Storm Water Pollution Protection Plan Specialist (SWPPP Specialist)						

					L&M	LEG	
N2206	Group IIIB, including:	42.59	5.00	17.06	1.20	0.20	66.25
	Federally Licensed Powderman (Responsible Person in Charge)						
	Grade Checking (setting or transferring of grade marks, line and grade, Stake Hopper)						

Tunnel Workers, Laborers (The area that is south of N63 latitude and west of W138 longitude)

**See note on last page if remote site

					L&M	LEG	
S2201	Group I, including:	33.00	7.71	17.06	1.20	0.20	59.37
	Brakeman						
	Mucker						
	Nipper						
	Storm Water Pollution Protection Plan Worker (SWPPP Worker - erosion and sediment control Laborer)						
	Topman & Bull Gang						
	Tunnel Track Laborer						

					L&M	LEG	
S2202	Group II, including:	34.10	7.71	17.06	1.20	0.20	60.47
	Burning & Cutting Torch						
	Certified Erosion Sediment Control Lead (CESCL Laborer)						
	Concrete Laborer						
	Jackhammer						
	Laser Instrument Operator						
	Nozzlemen, Pumpcrete or Shotcrete						
	Pipelayer Helper						

					L&M	LEG	
S2203	Group III, including:	35.09	7.71	17.06	1.20	0.20	61.46
	Miner						
	Retimberman						

Wage benefits key: BHR=basic hourly rate; H&W=health and welfare; IAF=industry advancement fund; LEG=legal fund; L&M=labor/management fund; PEN=pension fund; SAF=safety; SUI=supplemental unemployment insurance; S&L=SUI & LEG combined; TRN=training; THR=total hourly rate; VAC=vacation

Tunnel Workers, Laborers (The area that is south of N63 latitude and west of W138 longitude)
 **See note on last page if remote site

						L&M	LEG	
S2204	Group IIIA, including:	38.70	7.71	17.06	1.20	0.20	0.20	65.07
	Asphalt Raker, Asphalt Belly Dump Lay Down							
	Drill Doctor (in the field)							
	Driller (including, but not limited to wagon drills, air-track drills, hydraulic drills)							
	Licensed Powderman							
	Pioneer Drilling & Drilling Off Tugger (all type drills)							
	Pipelayer							
	Storm Water Pollution Protection Plan Specialist (SWPPP Specialist)							

						L&M	LEG	
S2206	Group IIIB, including:	42.59	5.00	17.06	1.20	0.20	0.20	66.25
	Federally Licensed Powderman (Responsible Person in Charge)							
	Grade Checking (setting or transferring of grade marks, line and grade, Stake Hopper)							

Tunnel Workers, Power Equipment Operators
 **See note on last page if remote site

						L&M	
A2207	Group I	44.03	9.95	11.05	1.00	0.10	66.13
A2208	Group IA	45.97	9.95	11.05	1.00	0.10	68.07
A2209	Group II	43.19	9.95	11.05	1.00	0.10	65.29
A2210	Group III	42.39	9.95	11.05	1.00	0.10	64.49
A2211	Group IV	35.56	9.95	11.05	1.00	0.10	57.66

* A remote site is isolated and relatively distant from the amenities of civilization, and usually far from the employee's home. As a condition of employment, the workers must eat, sleep, and socialize at the worksite and remain there for extended periods.

** This classification must receive board and lodging under certain conditions. A per diem option of \$75 is an alternative to providing meals and lodging. See Page v for an explanation.

*** Work in combination of classifications: Employees working in any combination of classifications within the diving crew (working diver, standby diver, and tender) in a shift are paid in the classification with the highest rate for a minimum of 8 hours per shift.

Wage benefits key: BHR=basic hourly rate; H&W=health and welfare; IAF=industry advancement fund; LEG=legal fund; L&M=labor/management fund; PEN=pension fund; SAF=safety; SUI=supplemental unemployment insurance; S&L=SUI & LEG combined; TRN=training; THR=total hourly rate; VAC=vacation