

CITY OF HOMER
INVITATION TO BID / BID DOCUMENTS

City of Homer 2016 Paving Project



PREPARED BY:
CITY OF HOMER – PUBLIC WORKS DEPARTMENT
3575 HEATH STREET
HOMER ALASKA 99603
907-235-3170

INVITATION TO BID
By the City of Homer, Alaska, for the
2016 Paving Project

Sealed bids for the **City of Homer 2016 Paving Project** will be received at the Office of the City Clerk, 491 East Pioneer Avenue, Homer Alaska, until **2:00 PM, Thursday, August 11th 2016**, at which time they will be publicly opened and read. The time of receipt will be determined by the City Clerk's time stamp. Bids received after the time fixed for the receipt of the bids shall not be considered. All bidders must submit a City of Homer Plan Holders Registration form to be on the Plan Holders List and to be considered responsive. Plan holder registration forms and Plans and Specifications are available online at <http://www.cityofhomer-ak.gov/rfps>

The City of Homer local bidder's preference requirements and State of Alaska prevailing wage rates will apply. A non-mandatory pre-bid conference will be held at the Public Works office, 3575 Heath Street, at 1:30 PM, Thursday, August 4th, 2016. The work includes, but is not limited to the following:

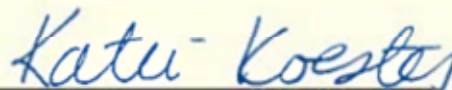
Construction survey, crushing existing AC pavement, 15,395 SY of 2" asphalt pavement, adjustment of utilities and monuments to grade and other bid items indicated on the bid tabs. Construction and Contract incidentals are within the 2011 City of Homer Standard Construction Specifications.

Please direct all technical questions regarding this project to: Dan Gardner, City of Homer, Public Works Department, 3575 Heath Street, Homer, Alaska 99603 (907) 235-3170

An electronic copy of Plans and Specifications is available on the City's website <http://www.cityofhomer-ak.gov/rfps> or you may purchase hard copies at the Office of the City Clerk upon payment of \$170 per set (\$200 for overnight delivery). City of Homer Standard Construction Specifications 2011 Edition (containing general contract provisions) may be downloaded from the City's web site. All fees are non-refundable. The City of Homer reserves the right to accept or reject any or all bids, to waive irregularities or informalities in the bids, and to award the contract to the lowest responsive bidder.

DATED this 14th day of July, 2016

CITY OF HOMER



Katie Koester, City Manager

Publish: Homer News – July 21, 28, 2016
Peninsula Clarion – July 24, 2016
Alaska Dispatch News- July 24, 2016

Fiscal Note: 160-766

Table of Contents

City of Homer 2016 Paving Project

Bid Advertisement;

City of Homer 2016 Paving Project

	Page(s)
I. Scope of Services	<i>IB-1</i>
II. General Bidding Requirements	<i>IB-1- IB-2</i>
III. Instructions to Bidders	<i>IB-2 IB-5</i>
IV. Bid Schedule	
Part A	
Bid Form	<i>BS-1 BS-10</i>
Bid Bond	<i>BB-1</i>
Part B	
1. Addenda Acknowledgement	<i>AA-1</i>
2. EEO – 1 Certification	<i>EEO-1 EEO-2</i>
3. Equal Employment Opportunity Clause	<i>OC1-OC2</i>
V. Proposed Contract Documents	<i>C-1 - C-6</i>
VI. Project Schedule	<i>S-1</i>
VII. Special Provisions	<i>SP-1 SP-8</i>
VIII. Appendices	
Local bidding preference	
	<i>Q1-Q3</i>
IX. Submittal	
XI. State of Alaska Labor Rates	

City of Homer 2016 Paving Project

The City of Homer, Alaska is requesting bid proposals from qualified firms and individuals for the project described herein.

I. Scope of Services

The proposed work is located within the Homer city limits and is illustrated on the plans entitled:

City of Homer 2016 Paving Project

The project consists of furnishing all labor, materials, equipment, tools, supervision and other facilities necessary for the performance of the work described herein and shown on the project drawings. The work includes but is not limited to the following:

Construction survey, crushing existing AC pavement, 15,395 SY of 2" asphalt pavement, adjustment of utilities and monuments to grade and other bid items indicated on the bid tabs. Construction and Contract incidentals are within the 2011 City of Homer Standard Construction Specifications.

II. General Bidding Requirements

The work must be performed by a Contractor skilled and regularly engaged in the general class or type of work called for under the Contract. The bidder must have a current contractor's license issued by the State of Alaska. The license must apply to the work described in the Invitation to Bid.

The City of Homer Standard Construction Specifications, 2011 Edition, shall supplement the project plans. A copy of the Homer Standard Construction Specifications (S.C.S.) may be obtained at the Office of the City Clerk, 491 E. Pioneer Ave., Homer, Alaska 99603. The cost for S.C.S. is per set is \$50.00. Persons requesting the sets by mail must include an additional \$25.00 for shipping.

This project is covered by the State of Alaska, Laborer's and Mechanic's Minimum Rates of Pay, Title 36 Public Contracts, (AS 36.05 & 36.10) **Pamphlet 600 Issue 32, Effective April 1st 2016.** It is the responsibility of the bidder to determine the current rates of pay required and to submit the proper certified payrolls to the State Department of Labor.

Performance and Payment bonds in the amount of One Hundred Percent 100% of the bid amount are required.

All bidders must submit a City of Homer Plan Holders Registration form to be on the Plan Holders List and to be considered responsive. Plan holder registration forms and Plans and Specifications are available online at <http://www.cityofhomer-ak.gov/rfps>

Bids must be submitted on the Bid Form and be received until will be received at the office of the City Clerk, City Hall, City of Homer, 491 East Pioneer Avenue, Homer, Alaska, until **2:00 PM August 11th, 2016.** A bid bond is required. Cashier checks in an amount equal to five percent (5%) of the bid are acceptable. Surety bonds are acceptable.

The City of Homer has a two-part bid process, Part A and Part B. Each portion of the bid must be submitted in separate envelopes. At the bid opening, Part B is opened first and must be complete and regular or Part A will not be opened and the bid will be rejected.

Part A of the bid contains the Bid Form, the Bid Bond and the Power of Attorney (if needed). Part A must be submitted separately in an envelope marked Part A.

Part B of the bid contains the 1) Addenda Acknowledgment, 2) EEO-1 Certification, 3) Equal Employment Opportunity Clause. Part B must be submitted separately in an envelope marked Part B.

III. Instruction to Bidders

The City of Homer reserves the right to accept or reject any or all proposals, to waive irregularities or informalities in the proposals, and to award the contract to the bidder that best meets the criteria stated below.

A. Qualification of Bidders

It is the intention of the City of Homer to award this contract to the lowest responsible, responsive Bidder who furnishes satisfactory evidence they have the requisite experience, ability and sufficient capital, facilities and plant to prosecute the work successfully (and properly) and to complete it within the time allowed in the Contract at the least cost to the City of Homer for dollars spent for value received.

If the signature on the Bid is by an agent, other than an Officer of a corporation or a member of a Co-partnership, a Power of Attorney must either be on file with the City Clerk prior to the Bid opening or submitted with the Bid in Part B.

B. Taxes

Attention is directed to the requirements of the General Conditions regarding the payment of taxes. All taxes that are lawfully assessed against Owner or Contractor in connection with the work shall be paid by the Contractor. The Bid prices shall include all such taxes.

The City of Homer is exempt from local sales taxes. The Contractor shall not include sales tax markup in his bid. However, in order to recoup sales tax the Contractor might pay at local vendors, the Contractor must secure a Tax Exempt card from the Kenai Peninsula Borough Tax Department.

C. Familiarization With The Work

Before submitting a Bid, each prospective Bidder shall familiarize themselves with the work, the site logistics, labor conditions and all laws, regulations and other factors affecting performance of the work. The Contractor shall carefully correlate his observations with the requirements of the Contract Documents and otherwise satisfy himself of the expense and difficulties attending performance of the work. The submission of a Bid shall constitute an acknowledgement that the Bidder has thoroughly examined and is familiar with the Contract Documents and the provisions thereof. The failure or neglect of a Bidder to receive or examine any of the Bid Documents shall in no way relieve the bidder from any obligations with the respect to their Bid or to the Contract. Misinterpretation or a reputed lack of knowledge concerning the Bid will not serve as a basis for a claim for additional compensation.

1. Site Conditions

Each Bidder shall visit the site (or sites) of the Work and completely inform himself relative to construction hazards and procedures, the availability of lands, the character and quantity of surface and subsurface materials and utilities to be encountered, the arrangement and conditions of existing structures and facilities, the procedure necessary for maintenance of uninterrupted operations of existing facilities, the character of construction equipment and facilities needed for performance of the work, and facilities for transportation, handling and storage of materials and equipment. All such factors shall be properly investigated and considered in the preparation of the Bid.

D. Interpretation of Bid Documents

All questions about the meaning or intent of the Contract Documents shall be submitted, in writing, to the Office of the Project Manager of Public Works, 3575 Heath St. Homer Alaska, 99603. Replies will be issued by Addenda mailed or delivered to all parties recorded by the City Clerk's Office as having received the Bidding documents. The City of Homer will not be held responsible for questions received less than (7) days prior to the date of opening of Bids. Only questions answered by formal written Addenda will be binding. Oral and other interpretations or clarifications will be without legal effect. No questions will be answered the day of the bid due date.

The Bid shall contain an acknowledgement of receipt of all Addenda, the numbers of which shall be filled in on the Addendum Form, properly signed by the Bidder and placed in envelope B.

It shall be the Bidder's responsibility to inquire as to addenda issued. Failure to include the Addenda Form in envelope B shall result in the Bid being rejected as non-responsive.

E. Bid Bond Guarantee

Each Bid shall be accompanied by a Bid Bond duly completed on the suggested form provided by a guaranty company authorized to carry on business in the State of Alaska, along with a General Power of Attorney form, if applicable, for payment to the City in the sum of five percent (5%) of the total amount of the Bid. Failure to include the Bid Bond in envelope A of the Bid shall result in the Bid being rejected as non-responsive.

The amount payable to the City under the Bid Bond or the certified or cashier's check, as the case may be, shall be forfeited to the City in case of a failure or neglect of the Bidder to furnish, execute, and deliver to the City required Performance and Payment Bonds, Evidences of Insurance, necessary forms or material required by the Bid or failure to enter into, execute and deliver to the City the Contract on the form provided therefore, within ten (10) working days after receipt of "Notice of Intent to Award Contract" by the City that the Contract is ready for execution. The "Award of Contract" will be made upon the execution of the Contract by the Bidder and the City.

F. Return of Bid Guarantee

Within thirty (30) days after the Bids are opened, the City will return the Bid Guarantees accompanying the Bids, which are not to be considered in making the award. The bid Guarantees of the three (3) lowest responsive Bids will be held until the Contract has been fully executed after which time the Guarantees will be returned to the respective Bidders whose Bids the Guarantees accompanied.

G. Contract Time

The Contract Time is an essential part of the Contract and it will be necessary for each Bidder to satisfy the City of his ability to complete the work within the time set forth in the Bid form. Provisions for delays, liquidated damages, and extensions of time are set forth in the Standard Construction Specifications. Time is of the essence in this contract.

H. Bids

1. Preparation of Bids

Bids must be submitted on the forms provided by the city and completed in all respects as required by the Bid Documents. Bids shall include all information requested herein, and be manually signed by the Bidder or the Bidder's duly authorized representative, with the Bidder's address and phone number. If the signature is by an agent, other than an Officer of a Corporation, or a member of a Co-partnership, a Power of Attorney must be on file with the City Clerk prior to opening the Bid or submitted in envelope B of the Bid; otherwise, the Bid will be disregarded as irregular and unauthorized, and will be rejected as non-responsive. All Bids must be regular in every respect, and no alterations shall be made to the Bid form.

If erasures or changes appear on the forms, each must be initialed by the person signing the Bid. No oral, telegraphic or telephone proposals will be considered.

Bids will be received at the City Clerk's Office located at 491 East Pioneer Avenue, Homer, Alaska 99603, until the time indicated on the Invitation to Bid. Each Bid shall be submitted enclosed in a sealed, opaque envelope. The Bidder shall see that the Bid title and date of Bid opening is on the lower left-hand corner of the envelope. The City is not responsible for the premature opening of, or failure to open, a bid not properly addressed and identified. Promised overnight delivery from the Post office or private carriers usually is an inaccurate statement for Alaska and Homer Area.

No consideration will be given by the city to a claim of error unless such claim is made to the city in writing within two (2) hours after the time of Bid opening. Written verification and supporting evidence of the error shall be delivered to the City Clerk within 24 hours of the Bid Opening (not including Saturday, Sunday or legal holidays) to allow consideration of the claim for error. Supporting evidence shall be original documents, including cost breakdown sheets, supplier quotes and other documents used to compute the Bid.

It is the bidder's responsibility to see that Bids are deposited at the time and place set forth for the public opening of Bids. Bids not received by the time will not be accepted and will be returned to the Bidder in the sealed bid envelope.

I. Local Bidders Preference

The City of Homer Local Bidder Preference applies to this contract.

IV. BID SCHEDULE & Bid Bond

Part A

**CITY OF HOMER
2016 PAVING PROJECT
E. BUNNELL AVE
Bid Schedule**

Bid Item	Description & Written Unit Price in Words	Estimated Quantity	Unit Bid Price	Total Bid Price
101	Mobe / Demob	1 L.S.		
	lump sum			
102	Construction Surveying	1 L.S.		
	Lump Sum			
206	2" Leveling Course	38 TON		
	per ton			
401	2" Asphalt Pavement	2,075 SY		
	per square yard			
402	Painted Traffic Markings	1 L.S.		
	lump sum			
404	Crush Existing AC Pavement	2,075 SY		
	per square yard			
512	Adjust SSMH/SDMH to Grade	4 EA		
	Each			
607	Adjust Valve Box to Grade	2 EA		
	Each			
712	Asphalt Speed Hump	1 EA		
	Each			

BS-1

Construction Total

**CITY OF HOMER
2016 PAVING PROJECT
BELUGA PLACE
Bid Schedule**

Bid Item	Description & Written Unit Price in Words	Estimated Quantity	Unit Bid Price	Total Bid Price
101	Mobe / Demob	1 L.S.		
	lump sum			
102	Construction Surveying	1 L.S.		
	Lump Sum			
206	2" Leveling Course	22 TON		
	per ton			
401	2" Asphalt Pavement	980 SY		
	per square yard			
402	Painted Traffic Markings	1 L.S.		
	lump sum			
404	Crush Existing AC Pavement	980 SY		
	per square yard			
712	Asphalt Pavement Hump	1 EA		
	per square yard			

BS-2

Construction Total

**CITY OF HOMER
2016 PAVING PROJECT
EARLY SPRING STREET
Bid Schedule**

Bid Item	Description & Written Unit Price in Words	Estimated Quantity	Unit Bid Price	Total Bid Price
101	Mobe / Demob	1		
	lump sum	L.S.		
102	Construction Surveying	1		
	Lump Sum	L.S.		
206	2" Leveling Course	42		
	per ton	TON		
401	2" Asphalt Pavement	1,800		
	per square yard	SY		
402	Painted Traffic Markings	1		
	lump sum	L.S.		
404	Crush Existing AC Pavement	1,800		
	per square yard	SY		
512	Adjust SSMH/SDMH to Grade	2		
	Each	EA		
607	Adjust Valve Box to Grade	1		
	Each	EA		
711	Adjust Monument to Grade	1		
	Each	EA		

BS-3

Construction Total

**CITY OF HOMER
2016 PAVING PROJECT
CLOVER LANE
Bid Schedule**

Bid Item	Description & Written Unit Price in Words	Estimated Quantity	Unit Bid Price	Total Bid Price
101	Mobe / Demob	1 L.S.		
	lump sum			
102	Construction Surveying	1 L.S.		
	Lump Sum			
206	2" Leveling Course	70 TON		
	per ton			
401	2" Asphalt Pavement	3,365 SY		
	per square yard			
402	Painted Traffic Markings	1 L.S.		
	lump sum			
404	Crush Existing AC Pavement	3,365 SY		
	per square yard			
512	Adjust SSMH/SDMH to Grade	3 EA		
	Each			
711	Adjust Monument to Grade	3 EA		
	Each			

BS-4

Construction Total

**CITY OF HOMER
2016 PAVING PROJECT
CLOVER PLACE
Bid Schedule**

Bid Item	Description & Written Unit Price in Words	Estimated Quantity	Unit Bid Price	Total Bid Price
101	Mobe / Demob	1 L.S.		
	lump sum			
102	Construction Surveying	1 L.S.		
	Lump Sum			
206	2" Leveling Course	20 TON		
	per ton			
401	2" Asphalt Pavement	1,150 SY		
	per square yard			
402	Painted Traffic Markings	1 L.S.		
	lump sum			
404	Crush Existing AC Pavement	1,150 SY		
	per square yard			
512	Adjust SSMH/SDMH to Grade	1 EA		
	Each			
711	Adjust Monument to Grade	1 EA		
	Each			

BS-5

Construction Total

**CITY OF HOMER
2016 PAVING PROJECT
Hillview Place
Bid Schedule**

Bid Item	Description & Written Unit Price in Words	Estimated Quantity	Unit Bid Price	Total Bid Price
101	Mobe / Demob	1 L.S.		
	lump sum			
102	Construction Surveying	1 L.S.		
	Lump Sum			
206	2" Leveling Course	18 TON		
	per ton			
401	2" Asphalt Pavement	860 SY		
	per square yard			
402	Painted Traffic Markings	1 L.S.		
	lump sum			
404	Crush Existing AC Pavement	860 SY		
	per square yard			

BS-6

Construction Total

**CITY OF HOMER
2016 PAVING PROJECT
MULLIKIN STREET
Bid Schedule**

Bid Item	Description & Written Unit Price in Words	Estimated Quantity	Unit Bid Price	Total Bid Price
101	Mobe / Demob	1 L.S.		
	lump sum			
102	Construction Surveying	1 L.S.		
	Lump Sum			
206	2" Leveling Course	40 TON		
	per ton			
401	2" Asphalt Pavement	1,760 SY		
	per square yard			
402	Painted Traffic Markings	1 L.S.		
	lump sum			
404	Crush Existing AC Pavement	1,760 SY		
	per square yard			
512	Adjust SSMH/SDMH to Grade	1 EA		
	Each			
607	Adjust Valve Box to Grade	3 EA		
	Each			
711	Adjust Monument to Grade	1 EA		
	Each			

BS-7

Construction Total

**CITY OF HOMER
2016 PAVING PROJECT
KACHEMAK WAY
Bid Schedule**

Bid Item	Description & Written Unit Price in Words	Estimated Quantity	Unit Bid Price	Total Bid Price
101	Mobe / Demob	1 L.S.		
	lump sum			
102	Construction Surveying	1 L.S.		
	Lump Sum			
206	2" Leveling Course	55 TON		
	per ton			
401	2" Asphalt Pavement	2,300 SY		
	per square yard			
402	Painted Traffic Markings	1 L.S.		
	lump sum			
404	Crush Existing AC Pavement	2,300 SY		
	per square yard			
512	Adjust SSMH/SDMH to Grade	2 EA		
	Each			
607	Adjust Valve Box to Grade	4 EA		
	Each			
711	Adjust Monument to Grade	2 EA		
	Each			

BS-8

Construction Total

**CITY OF HOMER
2016 PAVING PROJECT
MARK WHITE AVENUE
Engineers Estimate**

Bid Item	Description & Written Unit Price in Words	Estimated Quantity	Unit Bid Price	Total Bid Price
101	Mobe / Demob	1 L.S.		
	lump sum			
102	Construction Surveying	1 L.S.		
	Lump Sum			
206	2" Leveling Course	22 TON		
	per ton			
401	2" Asphalt Pavement	1,105 SY		
	per square yard			
402	Painted Traffic Markings	1 L.S.		
	lump sum			
404	Crush Existing AC Pavement	1,105 SY		
	per square yard			
512	Adjust SSMH/SDMH to Grade	1 EA		
	Each			
607	Adjust Valve Box to Grade	1 EA		
	Each			
711	Adjust Monument to Grade	1 EA		
	Each			

BS-9

Construction Total

BID SCHEDULE - SUMMARY
2016 Paving Project

Bid Summary	SUMMARY SCHEDULE BID PRICE
Subtotal Bid Price - E. Bunnell Avenue	\$
Subtotal Bid Price - Beluga Place	\$
Subtotal Bid Price - Early Spring Street	\$
Subtotal Bid Price - Clover Lane	\$
Subtotal Bid Price - Clover Place	\$
Subtotal Bid Price - Hillview Place	\$
Subtotal Bid Price - Mullikin Street	\$
Subtotal Bid Price - Kachemak Way	\$
Subtotal Bid Price - Mark White Avenue	\$
Total Bid	\$

Name of Firm _____

Address of Firm _____

Authorized Signature _____ **Date** _____

Printed Name and Title of Signatory _____

Date of Bid _____

BID BOND

KNOW ALL MEN BY THESE PRESENTS, that _____

Hereinafter called the PRINCIPAL, and _____

a Corporation duly organized under the laws of the State of Alaska having its principal place of business at _____

In the State of Alaska, and authorized to do business in the State of Alaska, as SURETY, are held and firmly bound unto the City of Homer hereinafter called the OBLIGEE, in the penal sum of _____ DOLLARS (\$ _____) for payment of which we bind ourselves, our heirs, executors, administrators, successors, and assigns, jointly and severally, firmly by these presents.

THE CONDITION OF THIS BOND IS SUCH THAT:

WHEREAS, the PRINCIPAL has herewith submitted his or its BID for _____

_____ said

Bid, by reference thereto, being hereby made a part hereof.

NOW, THEREFORE, if the Bid submitted by the PRINCIPAL is accepted and the Contract awarded to the PRINCIPAL, and if the PRINCIPAL shall execute the proposed Contract and shall furnish such Performance and Payment Bond as required by the Contract Documents within the time fixed by the documents, then this obligation shall be void: if the PRINCIPAL shall fail to execute the proposed Contract and furnish the Bond, the SURETY hereby agrees to pay the OBLIGEE the penal sum as liquidated damages:

Signed and sealed this _____ Day _____ of _____, 2016.

PRINCIPAL: _____

BY: _____

SURETY: _____

ATTORNEY-IN-FACT: _____

Part B

ADDENDA ACKNOWLEDGMENT

Project Name: **City of Homer 2016 Paving Project**

I hereby acknowledge addenda numbers:

Name of Firm: _____

Signature of Bidder: _____

Date: _____

This Acknowledgement must be included with Part B of the Bid or the Bid will be considered non-responsive.

City of Homer

Equal Employment Opportunity (EEO – 1) CERTIFICATION

The following Certification is required by the Equal Employment Opportunity Regulations of the Secretary of Labor (41 CFR 60-1.7 (b) (1)) and must be submitted by BIDDERS and proposed SUBCONTRACTORS in connections with contracts and subcontracts which are subject to the Equal Opportunity Clause. Contracts and subcontracts which are exempt from the Equal Opportunity Clause are set forth in 41 CFR 60-1.5 (generally only contracts or subcontracts of \$10,000 or under are exempt.) Proposed PRIME CONTRACTORS and SUBCONTRACTORS who have participated in a previous contract or subcontract subject to the Executive Orders and have not filed the required reports, should note the 41 CFR 60-1.7 (b) (1) prevents the award of contracts and subcontracts unless such contractor submits a report covering the delinquent period or such other period as specified by the Federal Highway Administration; by the Director, Office of Federal Contract Compliance Programs, U.S. Department of Labor; or by the Equal Employment Opportunity Commission.

Currently, Standard Form 100 (EEO-1) is the only report required by the Executive Orders or their implementing regulations. The Employer Information Report EEO-1 (Standard Form 100) is not a voluntary survey. The filing of the report is in accordance with Standard Form 100 instructions and is required by Federal law. The applicable law is Section 709©, Title VII, Civil rights Act of 1964 and regulations issued by the Equal Opportunity Commission under that law are reprinted in Appendix (6). Under Section 710(b) of Title VII, the Commission may obtain an order from a United States District Court compelling a covered employer to file this report. Under Section 209 (a) of Executive Order 11246, the penalties for failure by a Federal contractor or subcontractor to comply may include termination of the Federal government contract and debarment from future Federal contracts.

It is the employer's responsibility to keep current on all EEO-1 filing requirements. All inquiries and requests for special procedures should be directed to: Office of Federal Contract Compliance Programs, Department of Labor, Federal Building/U.S. Court House, 701 C Street, Box 55, Anchorage, AK 99513. Blank reporting forms may be obtained from: The Joint Reporting committee, P.O. Box 2236, Norfolk, Virginia 23501 (804) 625-3734.

(CHECK APPLICABLE BLOCK) The BIDDER_____or proposed
SUBCONTRACTOR_____hereby certifies:

1. Their firm has participated in a previous contract or subcontractor subject to the Equal Opportunity Clause as required by Federal Executive Order 11246, Section 201 (301 F.R. 12319) YES_____ NO _____
 - A. Their firm has filed all reports due under the applicable filing requirement with the Joint Reporting Committee Opportunity Commission as stated in this certifications. YES NO _____

2. Their firm has participated in a previous City of Homer construction contract or subcontract. YES_____ NO _____
 - A. Their firm has filed all the EEO reports due under applicable filing requirements of the city of Homer Department of Public Works. YES_____ NO _____

Signature of Authorized Representative of Company

Date

Name of Company

Phone Number

Address of Company

Zip Code

PROJECT NAME - **City of homer 2016 Paving Project**

This certificate (2 pages) needs to be included with the Bid Documents Part B or the Bid will be considered non-responsive.

EQUAL EMPLOYMENT OPPORTUNITY CLAUSE

During the performance of this contract, the contractor agrees to comply with OFCC Regulations 40 CFR 60.1.4 (1) through (7) as follows:

1. The contractor will not discriminate against any employee or applicant for employment because of race, color, religion, sex or national origin. The contractor will take affirmative action to ensure that applicants are employed, and that employees are treated during employment without regard to their race, color, religion, sex, or national origin. Such action shall include, but not be limited to the following: Employment, upgrading, demotion, or transfer, recruitment or recruitment advertising; layoff or termination; rates of pay or other forms of compensation; and selection for training, including apprenticeship. The contractor agrees to post in conspicuous places, available to employees and applicants for employment, notices to be provided by the contracting officer setting forth the provisions of this nondiscrimination clause.
2. The contractor will, in all solicitations or advertisements for employees placed by or on behalf of the contractor, state that all qualified applicants will receive consideration for employment without regard to race, color, religion, sex, or national origin.
3. The contractor will send to each labor union or representative of workers with whom he has a collective bargaining agreement or other contract or understanding, a notice to be provided by the agency contracting officer, advising the labor union or workers' representative of the contractor's commitments under Section 202 of Executive Order 11246 of September 24, 1965 and shall post copies of the notice in conspicuous places available to employees and applicants for employment.
4. The contractor will comply with all provisions of executive order 11246 of September 24, 1965 and of the rules, regulations, and relevant orders of the Secretary of Labor.
5. The contractor will furnish all information and reports required by Executive Order 11246 of September 24, 1965 and by the rules, regulations, and orders of the secretary of labor, or pursuant thereto, and will permit access of his books, records, and accounts by the contracting agency and the secretary of Labor for purposes of investigation to ascertain compliance with such rules, regulations, and orders.
6. In the event of the contractor's noncompliance with the nondiscrimination clauses of this contract or with any such rules, regulations or orders, this contract may be canceled, terminated or suspended in whole or in part and the contractor may be declared ineligible for further government contracts in accordance with procedures authorized in executive order 11246 of September 24, 1965 and such other sanctions may be imposed and remedies invoked as provided in executive order 11246 of September 24, 1965 or by rule, regulation or order of the Secretary of Labor as otherwise provided by law.

7. The contractor will include the provisions of paragraphs (1) through (7) in every subcontract or purchase order unless exempted by rules, regulations, or orders of the Secretary of Labor issued pursuant to section 204 of Executive Order 11246 of September 24, 1965 so that such provisions will be binding upon each subcontractor or vendor. The contractor will take such action with respect to any subcontract or purchase order as the contracting agency may direct as a means of enforcing such provisions including sanctions for noncompliance: Provided, however that in the event the contractor becomes involved in, or is threatened with, litigation with a subcontractor or vendor as a result of such direction by the contracting agency, the contractor may request the United States to enter into such litigation to protect the interest of the United States.

(Signature)

(Title)

(Date)

This form (2 pages) must be included with the Bid, Part B, or the Bid will be considered non-responsive.

V. Contract Documents

C O N T R A C T

This Contract, made and entered into by and between the City of Homer, Alaska, a Municipal Corporation, hereinafter called the "City" and

Hereinafter called the "Contractor";

WITNESSETH:

The Contractor, in consideration of the sum to be paid him by the City and of the covenants and agreements herein contained, hereby agrees at his own cost and expense to do all the work and furnish all the materials, tools, labor and all appliances, machinery and appurtenances for City to the extent of the Bid made by the contractor, dated the _____ day of _____, 2016, all in full compliance with the Contract documents referred to herein as:

City of homer 2016 Paving Project

- a) Invitation to Bid
- b) The signed copy of the Bid
- c) The Bid Bond
- d) The 2011 City of Homer Standard Construction Specifications
- e) All Addenda, totaling _
- f) The drawings which consist of 8 sheets entitled;

2016 Paving Project

Are hereby referred to and reference made a part of the Contract as fully and completely as if the same were fully set forth herein.

In consideration of the performance of the work as set forth in these Contract Documents, the city agrees to pay to the contractor the amounts specified bid in the Bid and to make such payments upon the Contractor's invoicing as approved by the City Engineer.

C O N T R A C T

CONTRACT COMPLETION TIME

The Contractor agrees to complete the project, in all respects no later than **October 31st 2016**

CONTRACT AMOUNT

In Numbers

In Words

LIQUIDATED DAMAGES:

Liquidated damages in the amount of \$250.00 per day will apply to the Contractor’s unexcused delay in the Completion of Construction. The liquidated damage amount specified herein shall only apply to damages and expenses the Owner may incur as a result of a delay in placing the facility into use and operation exclusive of third party damages or claims. The liquidated damage amount shall not cover any damages or expenses the Owner may incur as a result of the Contractor’s unexcused delay in completing any portion of the entire Project, which delay results in whole or in part in delay, disruption, hindrance, interference, damages or expenses to any third party. The Contractor shall remain liable for the full amount of any such delay damages or expenses suffered by any third party without limitation by any liquidated damage provision set forth in the Contract.

IN WITNESS WHEREOF, we, the parties hereto, each herewith subscribe the same this
M o n t h _____ day _____, 2016.

CITY OF HOMER

By: _____

Title: Mary K. Koester, Homer City Manager

CONTRACTOR

(Contractor)

By: _____

Title: _____

PERFORMANCE BOND

KNOW ALL MEN BY THESE PRESENTS: That we _____
(Name of Contractor)

_____ a _____
(Corporation, Partnership, Individual)

hereinafter called "Principal" and _____
(Surety)

of _____, State of _____

hereinafter called the "Surety" are held and firmly bound unto the City of Homer, hereinafter called "Owner," in the penal sum of _____ dollars (\$ _____) in lawful money of the United States, for the payment of which sum well and truly to be made, we bind ourselves, our heirs, executors, administrators and successors, jointly and severally, firmly by these presents.

THE CONDITIONS OF THIS OBLIGATION are such that Whereas, the Principal has or is about to enter into a certain contract with the Owner, a copy of which is hereto attached and made a part hereof for the construction of:

NOW, THEREFORE, if the Principal shall well, truly and faithfully perform its duties, all the undertakings, covenants, terms, conditions, and agreements of said contract during the original term thereof, and any extensions thereof which may be granted by the Owner, with or without notice to the Surety, and if it shall satisfy all claims and demands incurred under such contract, and shall fully indemnify and save harmless the Owner from all costs and damages which it may suffer by reason of failure to do so, and shall reimburse and repay the Owner all outlay and expense which the Owner may incur in making good any default, then this obligations shall be void; otherwise to remain in full force and effect.

PROVIDED, FURTHER, that the said surety, for value received hereby stipulates and agrees that no change, extension of time, alteration or addition to the terms of the contract or the work to be performed thereunder or the specifications accompanying the same shall in any way affect it obligation on this bond, and it does hereby waive notice of any such change, extension of time, alteration or addition to the terms of the contract or to the work or to the specifications.

PROVIDED, FURTHER, that no final settlement between the Owner and the Principal shall abridge the right of any beneficiary hereunder, whose claim may be unsatisfied.

IN WITNESS WHEREOF, this instrument is executed in five (5) counterparts, each one of which shall be deemed and original, this the _____ day of _____, 2016.

ATTEST:

(Principal's Corporate Secretary)

(Principal)

Affix CORPORATE SEAL if applicable

(Address-Zip Code)

(Witness as to Principal)

(Address – Zip Code)

(Surety)

ATTEST:

By: _____
(Attorney-in-Fact)

(Surety) Secretary

(Address-Zip Code)

(Affix SURETY'S SEAL)

(Witness as to Surety)

(Address-Zip Code)

Notes:

If Principal is Partnership, all partners must execute bond. The Attorney-in-Fact, who executes this bond on behalf of the surety, must attach a copy of his Power-of-Attorney as evidence of his authority.

PAYMENT BOND

KNOW ALL MEN BY THESE PRESENTS: That we _____
(Name of Contractor)

_____ a _____
(Corporation, Partnership, Individual)

hereinafter called "Principal" and _____
(Surety)

of _____, State of _____

hereinafter called the "Surety" are held and firmly bound unto the City of Homer,

hereinafter called "Owner," in the penal sum of _____

dollars (\$_____) in lawful money of the United States, for the payment of which sum well and truly to be made, we bind ourselves, our heirs, executors, administrators and successors, jointly and severally, firmly by these presents.

THE CONDITIONS OF THIS OBLIGATIONS are such that Whereas, the Principal has or is about to enter into a certain contract with the Owner, a copy of which is hereto attached and made a part hereof for the construction of:

NOW, THEREFORE, if the Principal shall promptly make payment to all persons, firms, subcontractors and corporations furnishing material for, or performing labor in the prosecution of the work provided for in such contract, and any authorized extension or modification thereof, including all amounts due for material, lubricants, fuels, repairs on machinery, equipment and tools, consumed or used in connection with the construction of such work, and all insurance premiums on said work, and for all labor performed in such work, whether by subcontractor or otherwise, then this obligation shall be void: otherwise to remain in full for and effect.

PROVIDED, FURTHER, that the said Surety, for value received hereby stipulates and agrees that no change, extension of time, alteration or addition to the terms of the contract or the work to be performed thereunder or the specifications accompanying the same shall in any way affect its obligation on this bond, and it does hereby waive notice of any such change, extension of time, alteration or addition to the terms of the contract or to the work or to the specifications.

PROVIDED, FURTHER, that no final settlement between the Owner and the Principal shall abridge the right of any beneficiary hereunder, whose claim may be unsatisfied.

IN WITNESS WHEREOF, this instrument is executed in five (5) counterparts, each one of which shall be deemed and original, this the _____ day of _____, 2016.

ATTEST:

(Principal's Corporate Secretary)

(Principal)

Affix CORPORATE SEAL if applicable

(Address-Zip Code)

(Witness as to Principal)

(Address-Zip Code)

(Surety)

ATTEST:

By:_____
(Attorney-in-Fact)

(Surety) Secretary

(Address-Zip Code)

(Affix SURETY'S SEAL)

(Witness as to Surety)

(Address-Zip Code)

Notes:

If Principal is Partnership, all partners must execute bond. The Attorney-in-Fact, who executes this bond on behalf of the Surety, must attach a copy of his Power-of-Attorney as evidence of his authority.

VI. Project Schedule

City of Homer 2016 Paving Project

No Later Than

Pre-Bid.....Public Works, 3575 Heath Street, 1:30 PM August 4th, 2016

Bids Due.....Until 2:00 PM August 11th, 2016

Notice of Intent to Award..... August 16th, 2016

Pre-Construction Meeting and Notice to Proceed..... August 29th, 2016

Completion by.....October 31st, 2016

VII. Special Provisions

CITY OF HOMER
Department of Public Works
2016 Repaving Project

INDEX TO SPECIAL PROVISIONS

SECTION 901	LOCATION AND SCOPE.....	SP-2
SECTION 902	REFERENCE TO STANDARD CONSTRUCTION SPECIFICATIONS .	SP-2
SECTION 903	TIME OF COMPLETION.....	SP-2
SECTION 904	MODIFICATIONS TO CONSTRUCTION SPECIFICATIONS	SP-2
A. Division 10 - General Provisions.....		SP-2
Section 10.02	Definitions.....	SP-2
Section 10.03	Award and Execution of Contract.....	SP-3
Section 10.04	Scope of Work	SP-3
Section 10.06	Legal Relations and Responsibilities.....	SP-4
Section 10.07	Measurement and Payment.....	SP-4
B. Division 100 - Standard Construction Specifications for General.....		SP-4
Section 103	Traffic Safety, Maintenance, and Restoration of Roads and Streets	SP-4
Section 106	Temporary Erosion Control During Construction.....	SP-5
C. Division 400 - Standard Construction Specifications for Asphalt Concrete Pavement		
Section 402	Painted Traffic Markings.....	SP-6
Section 404	Crushed Asphalt Base Course.....	SP-6
D. Division 700 - Standard Construction Specifications for Miscellaneous Construction		
Section 712	Permanent Asphalt Speed Humps.....	SP-8

CITY OF HOMER
Department of Public Works
2016 Repaving Project

SPECIAL PROVISIONS

SECTION 901 - LOCATION AND SCOPE

All proposed Work is located within the City of Homer corporate limits and is more particularly located as shown on the design drawings. The Work included under this Contract consists of furnishing all labor, materials, equipment, supervision, and other facilities necessary to successfully complete the Work set forth in the plans and specifications.

SECTION 902 - REFERENCE TO HOMER STANDARD CONSTRUCTION SPECIFICATIONS

This Contract is subject to and hereby incorporates by reference the “*City of Homer Standard Construction Specifications, 2011 Edition*”, hereinafter referred to as HSCS. The Standard Construction Specifications are available for purchase at City of Homer, 491 Pioneer Street, Homer, Alaska 99603.

All Work under this Contract shall comply with the latest edition and addenda to all applicable codes, ordinances and standards. It shall be the responsibility of the Bidder to prepare his/her bid so that all materials and/or different arrangements of connections or fittings shall harmoniously conform with the intent of the Contract Drawings, HSCS, and the Special and Supplemental Provisions.

SECTION 903 - TIME OF COMPLETION

This Project shall be completed by October 31st 2016

SECTION 904 - MODIFICATIONS TO CITY OF HOMER CONSTRUCTION SPECIFICATIONS

The following listed provisions of HSCS are amended as hereafter stated:

A. DIVISION 10 - GENERAL PROVISIONS

SECTION 10.01 - DEFINITIONS

Add the following definitions:

ADA - The Americans with Disabilities Act of 1990. Public law 101-336 prohibits discrimination on the basis of disability by private entities in places of public accommodation.

Record Documents - Detailed drawings that accurately depict all changes in location (both horizontal and vertical), material, equipment, and other elements of Work accomplished by Contractor. The drawings shall also depict the horizontal and vertical locations of all other utilities and obstructions encountered during construction. Final elevations and locations shall be clearly marked with actual dimensions, or existing dimensions shall be noted with "ASB" if no changes occur.

SECTION 10.03 -AWARD AND EXECUTION OF CONTRACT

Article 3.9 - Contractor to Furnish Performance and Payment Bond

Add the following paragraphs:

The City requires two references for the Contractor's proposed Performance and Payment Bond Surety. The names and telephone numbers of these references must be provided with the executed bond documents. The City will contact these references and inquire as to the acceptability of the surety's past performance.

The Performance and Payment Bond forms for this Project are included in these Contract Documents. The surety submitted by the Contractor must be acceptable to the City of Homer.

SECTION 10.04 - SCOPE OF WORK

Add the following Article:

Article 4.6 - Record Documents

Contractor shall maintain Record Documents on the job site consisting of a complete set of blue-line plans, survey line and grade books, and other Contract Documents including Special Provisions. All deviations, deletions, additions, alterations, and changes in location (both vertical and horizontal), material, equipment, or other changes in the Work and other horizontal and vertical locations of other utilities encountered shall be recorded on the affected Record Documents and kept current on a daily basis. Design dimensions, elevations, and grades that are not changed shall be identified as being accurate by noting "ASB" adjacent to the design value. The Record Documents, marked "RECORD" shall be available at the project site for inspection by the Engineer or his/her agents at any time and shall be kept neat, clean, undamaged, and updated. All additions and corrections shall be neat, clean, and legible. If additional plan sheets are required,

The Engineer will review all Record Documents for completeness and conformance to the standards stated above. Contractor shall make all corrections, changes, additions, and deletions required to conform to the standards. The Engineer may periodically review the status of the Record Documents during the course of the Work. Failure of Contractor to keep the Record Documents current and in the required condition will be considered cause for additional withholding from the progress payments as provided in *HSCS, Section 10.07 Measurement and Payment, Article 7.6 Progress Payments*.

Approved final Record Documents, bearing certification (written signature endorsement) by Contractor that the Record Documents are complete and accurate representation of the project as constructed, along with survey notes, shall be delivered to the Engineer within

thirty (30) days after Substantial Completion or prior to final acceptance of the project, whichever is earlier.

SECTION 10.06 - LEGAL RELATIONS AND RESPONSIBILITIES

Article 6.16 - Restoration of Damaged Property

Add the following paragraph:

This provision also applies to all areas used by the Contractor for staging of the construction and shall include restoring those properties to their original condition to the satisfaction of the City.

Section 10.07 - Measurement and Payment

Article 7.6 - Progress Payments

Delete paragraph 9 and replace with the following:

Payments due and unpaid under the Contract shall bear interest at the rate of 6.0%, including interest on retainage, which will accrue from the date a progress payment is due following issuance of a Certification of Payment by the Engineer until the date of payment to the Contractor.

B. DIVISION 100 - STANDARD CONSTRUCTION SPECIFICATIONS FOR GENERAL CONDITIONS

SECTION 103 -TRAFFIC SAFETY, MAINTENANCE, AND RESTORATION OF ROADS AND STREETS

103.1 - General

Add the following paragraphs:

No work shall be started prior to approval of the traffic plan (TP). The Contractor shall give 48 hours notification to the Engineer before starting any work that might inconvenience the traveling public or change existing travel patterns. The TP may be modified, subject to approval by the Engineer, as construction progresses. The Contractor shall give 48 hours notification to the Engineer prior to implementing changes to the TP.

All traffic control devices necessary to fulfill the requirements of these Specifications, including construction signs and barricades, shall be furnished by the Contractor and shall be considered incidental to this pay item. All such devices shall conform to the design, materials, color and fabrication requirements of the "Alaska Traffic Manual". The construction signs and barricades shall be of high intensity reflective sheeting as provided in the "Alaska Department of Transportation and Public Facilities Standard Construction Specifications", 1988 Edition, Section 643.

103.2 - Construction Requirements

Add the following paragraphs:

The Contractor shall maintain the work during construction and until the work is accepted, in accordance with these Specifications. This maintenance shall be a continuous and effective effort, prosecuted on a day by day basis, with adequate equipment and personnel provided to enable the roadway and structures to be maintained in a safe and satisfactory condition for the traveling public at all times. The Contractor shall be liable for all damage or injuries suffered due to the Contractor's operations or by the Contractor's failure to provide adequate traffic safety, maintenance or restoration services.

ADOT&PF's Area Maintenance Supervisor shall be notified of any traffic control operations affecting Sterling Highway (Homer Bypass) and submit a TP for approval.

Any pavement and/or base course within State right-of-way that is to be removed and replaced shall match existing courses in type and thickness or be approximately equivalent.

All locations requiring redirection or stopping of the traveling public shall be properly signed and/or flagged by the Contractor. The Contractor's equipment shall stop at all points of intersection with the traveling public unless satisfactory traffic control measures, approved in writing, are installed and maintained at the Contractor's expense.

103.5 - Method of Measurement

Delete and replace with the following:

No separate measurement will be made since Traffic Maintenance shall be considered subsidiary to the project.

103.6 - Basis of Payment

Delete and replace with the following:

No separate payment will be made for this item. The Contractor costs associated with this item are considered subsidiary to other items of work.

SECTION 104 - TEMPORARY EROSION CONTROL DURING CONSTRUCTION

104.1 - General

The Contractor shall provide all temporary erosion control measures necessary during construction for the prevention of water pollution, erosion, and/or siltation. These measures are for the protection of all streams, lakes, ponds, wetlands and tidal waters.

The Contractor is directed to Alaska State regulations (18AAC70) which states that no person may conduct an operation that causes or contributes to a violation of water quality standards set forth in 18AAC70.010 to 18AAC70.032.

The Contractor shall provide a plan describing temporary erosion control measures to be employed during construction. The plan shall be delivered to the Engineer 5 days before commencement of work. The Owner's Representative will review the plan within 5 working days of submission. If the plan is rejected, the Contractor shall resubmit the

plan. The accepted temporary erosion control measures shall be in place immediately after Contractor mobilization and before any construction begins.

104.2 - Construction

The Contractor's attention is called to the publication "Storm Water - Contractor Guidance for Preparing and Executing Storm Water Pollution Prevention Plans" available from ADOT&PF. This document contains possible procedures for many pollution control operations.

Temporary erosion control measures may include such items as silt fences, sedimentation ponds, intercepting embankments and channels, check dams, rock lining, mulching, jute matting, seeding, sodding, and other erosion control devices as required. Where erosion is expected to be a severe problem, clearing, grubbing, grading, filling, and other operations shall be scheduled and performed such that permanent erosion control measures follow immediately. Permanent erosion control measures are those work items specified elsewhere in the Contract Documents which are intended to provide permanent erosion control such as paving, seeding, and other measures as required.

Temporary erosion control measures shall remain in place and in good working condition until permanent erosion control is in place. The continued maintenance of these temporary erosion control items and replacement of damaged items shall be the ongoing responsibility of the Contractor. Under *HSCS Section 10.05, Article 5.24*, the Engineer may suspend work if the Contractor fails to carry out the requirements of the temporary erosion control plan during construction. After suspension of the work, the Owner may perform or contract the performance of the erosion control measures and deduct those costs from the Contractor's progress payments.

104.3 - Measurement and Payment

No separate measurement or payment shall be made for temporary erosion control during construction, as it shall be considered incidental to excavation and other items of work.

C. DIVISION 400 - STANDARD CONSTRUCTION SPECIFICATIONS ASPHALT CONCRETE PAVEMENT

SECTION 402 – PAINTED TRAFFIC MARKINGS

402.2 – TYPES OF LINES. The intent of this project is to create two travel lanes as shown on the project drawings. Roads receiving striping shall be striped under the following schedule:

Centerline: 4-inch wide double yellow stripes for the full length of paving improvements. Centerline stripe is to be located as directed by the Engineer.

Fog Lines: 4" wide single white solid stripe at outside edge of road lane. Fog lines are to be located as directed by the Engineer.

Thermoplastic: 24" wide white solid torch-down white thermoplastic stop bar as shown on project drawings. Place material as specified by the manufacturer and as directed by the Engineer.

SECTION 404 - CRUSHED ASPHALT BASE COURSE

404-1.01 DESCRIPTION. Construct a base course, using pulverized asphalt pavement, to the lines and grades shown on the Plans.

404 – 2.01 MATERIALS. Use materials that conform to the following:

Asphalt Concrete	Existing asphalt pavement material
Aggregate Base Course	City of Homer Standard Construction Specifications, 2011 Edition, Section 206-Leveling Course

404 – 3.01 CONSTRUCTION REQUIREMENTS

PULVERIZING AND MIXING. Crush or process the existing asphalt pavement so that 100% by weight passes the 2-inch sieve and 95-100% passes the 1½-inch sieve.

Use self-propelled pulverizing and mixing equipment capable of processing to the full depth in a single pass. If emulsified asphalt is called for on the Plans, the mixing equipment must also be capable of adding the emulsion, through a metered system during mixing.

Add crushed aggregate base course (leveling course) to the base course mixture as needed to conform to the design grade and template.

WEATHER LIMITATIONS. Do not use any frozen material or compact on a frozen design grade.

SHAPING AND GRADING. Use a finish grader that is equipped with an automatic grade and cross slope control system. Maintain longitudinal grade control, based upon either string line or the existing roadway surface, as determined by the Engineer.

COMPACTION AND COMPACTION EQUIPMENT. The Engineer will use AASHTO T-180D to determine the density standard. Make each control strip a minimum 12 feet by 300 feet. Compact the remainder of the project to not less than 98% of the density standard, in accordance with the WAQTC TM 8. The Engineer shall designate the location of the test strips.

Compact the base course using vibratory compactors, applying a minimum dynamic force of 50,000 pounds per vibration at a minimum frequency of 1,000 vibrations per minute. Adjust working speed in order to apply 8 to 12 impacts per foot. In areas inaccessible to rollers, use mechanical tampers until thoroughly compacted.

404-3.05 SURFACE TEST. The finished surface will be tested by the City for smoothness and accuracy of grade, crown, super elevation and width.

Limit surface deviations to 3/8 inch, as measured from the testing edge of a 10-foot straightedge between two contact points with the surface parallel with, and at right angles to, the centerline.

The City of Homer will provide density testing

D. DIVISION 700 - STANDARD CONSTRUCTION SPECIFICATIONS FOR MISCELLANEOUS CONSTRUCTION

SECTION 712 – PERMANENT ASPHALT SPEED HUMPS

712-1.01 GENERAL

The Work under this section shall consist of furnishing all materials and performing all operations necessary to construct permanent asphalt speed humps on paved surfaces.

712-2.01 MATERIAL

The speed humps shall be constructed of asphalt pavement material as specified HSCS Section 401.

712-3.01 CONSTRUCTION

Construct speed humps in accordance with HSCS Section 401 and the dimensions as detailed in the Drawings. Equipment used in the construction shall conform to HSCS Section 401.

Density and surface requirements shall conform to HSCS Section 401.

Prior to paving, Contractor shall apply a layer of Tack Coat shall be applied to the existing surface in accordance latest Asphalt Institute Specifications for STE-1 (Snap-Tack) or equal.

712-4.01 MEASUREMENT

The speed humps shall be measured per each complete speed hump accepted in place, in accordance with maximum and minimum tolerances as shown on project drawings. No separate measurement or payment will be made for asphalt, tack coat, templates, or other material required to construct each speed hump as they are incidental to this Work item.

712-5.01 BASIS OF PAYMENT

Payment for this Work shall be in accordance with HCSC General Provisions Measurement and Payment, and shall include full payment for all Work described in this Section.

Payment shall be made under the following unit:

ITEM	UNIT
Asphalt Speed Hump	Each

- END OF SPECIAL PROVISIONS -

VIII. Appendices

Local Bidder Preference

A local bidder preference shall be incorporated into the award of this contract based on the following criteria:

- A Bidder who maintains and operates a business within the boundaries of the City of Homer shall be considered the lower Bidder where its offer is:
 1. Not more than five percent (5%) higher than the lowest non-local bid up to five hundred thousand dollars (\$0 - \$500,000) or;
 2. Not more than five percent (5%) higher than the lowest non-local bid on the first five hundred thousand dollars (\$500,000) and two and ½ percent (2.5%) higher than the lowest non-local bid on an amount greater than five hundred thousand dollars (\$500,000) to one million dollars (\$1,000,000). There will be no additional local bidder preference percentage for bid amounts exceeding one million dollars (\$1,000,000).

- A Bidder shall be deemed a Local Bidder who:
 1. Holds a current Alaska Business License to provide the services requested by this contract; and
 2. Submits a bid under the name appearing on the firm's current Alaska Business License; and
 3. Has maintained a place of business within the boundaries of the City of Homer for a period of at least six (6) months immediately preceding the date of the Bid and intends to permanently maintain such place of business in the future; and
 4. Is not delinquent in the payment of any taxes, charges, or assessments owed to the City of Homer on account of that business.

The City Manager may require such documentation or verification by the person or firm claiming to be a local bidder as deemed necessary to establish the qualifications stated in this section.

IX. Submittals

(Due within two (2) days after bid)

CONTRACTOR'S QUESTIONNAIRE
NOTICE TO CONTRACTORS

Prior to Award, this questionnaire shall be completely filled out for the project upon which a bid is submitted.

A. FINANCIAL

1. Have you ever failed to complete a contract on account of insufficient resources? _____

2. Have you made sufficient arrangements to finance the work? _____
If so, with whom and for what amount? _____

If so, with what company? _____

B. EQUIPMENT

1. Set forth below the equipment which you have available for the work which you propose to do. This equipment should be listed in detail (General statements will not be accepted).

<u>NO.</u>	<u>ITEMS</u>	<u>TYPE</u>	<u>SIZE/CAPACITY</u>	<u>PRESENT VALUE</u>

2. Do you thoroughly understand that in case the contract is awarded to you, you may be required to use any or all of the equipment listed on the work covered by this contract? _____

3. Do you propose to purchase any equipment for use on this project should contract be awarded to you? If so, state type, quantity and approximate cost.

4. Do you propose to rent any equipment for this work? _____
If so, state type, quantity, and reason for renting. _____

5. Have you made contracts or received firm offers for all necessary materials with the prices used in preparing your proposal? _____

6. Do you intend to plan to subcontract any of the work? _____
If so, what types or portions of the work. _____

Approximate value \$ _____ Percent of total bid _____

C. EXPERIENCE

1. How many years has your organization been in business as a general contractor under your present business name? _____

2. How many years experience in construction work has your organization had:

a) as a General Contractor _____.

b) as a Subcontractor _____.

3. List previous contracts you have completed of a similar nature to this proposed contract:

a) _____

b) _____

c) _____

d) _____

e) _____

4. List projects which you currently have under contract or expect to have under contract during the life of this contract:

a) _____

b) _____

c) _____

Use additional sheets as necessary.

5. List your staff you plan to use on this project and the position they will fill for this project (include managerial and clerical personnel that will provide support services).

STAFF MEMBER

POSITION

Signature: _____

Title: _____

JOINT VENTURE

1. Joint Venture Agreement
2. A statement signed by authorized person of each party to the joint venture.
3. Each party to the joint venture shall comply with the requirements for corporations, partnerships or individuals, as applicable.

PARTNERSHIP

1. Partnership Agreement
2. Statement signed by all partners granting authority to the partner signing the Bid.

CORPORATIONS

1. Articles of Incorporation – most recent.
2. By-Laws – most recent.
3. Resolution of the Board of Directors granting the authority to the officer signing on behalf of the corporation.

X. State of Alaska Labor Rates



Laborers' & Mechanics' Minimum Rates of Pay

Effective April 1, 2016
Issue 32

Title 36. Public Contracts
AS 36.05 & AS 36.10
Wage & Hour Administration
Pamphlet No. 600

ALASKA DEPARTMENT OF LABOR
& WORKFORCE DEVELOPMENT



THE STATE
of **ALASKA**
GOVERNOR BILL WALKER

**Department of Labor and
Workforce Development**

Office of the Commissioner

Post Office Box 111149
Juneau, Alaska 99811
Main: 907.465.2700
fax: 907.465-2784

April 1, 2016

TO ALL CONTRACTING AGENCIES:

At the Alaska Department of Labor and Workforce Development, our goal is putting Alaskans to work. This pamphlet is designed to help contractors awarded public construction contracts understand the most significant laws of the State of Alaska pertaining to prevailing wage and resident hire requirements.

This pamphlet identifies current prevailing wage rates and resident hire classifications for public construction contracts (any construction projects awarded by the State of Alaska or its political subdivisions, such as local governments and certain non-profit organizations). Because these rates may change, this publication is printed in the spring and fall of every year, so please be sure you are using the appropriate rates. The rates published in this edition become effective April 1, 2016.

All projects with a final bid date of April 11, 2016, or later, must pay the prevailing wage rates contained in this pamphlet. As the law now provides, these rates will remain stable during the life of a contract or for 24 calendar months, whichever is shorter. **The 24-month period begins on the date the prime contract is awarded.** Upon expiration of the initial 24-month period, the latest wage rates issued by the department shall become effective for a subsequent 24-month period or until the original contract is completed, whichever occurs first. This process shall be repeated until the original contract is completed.

The term "original contract" means the signed contract that resulted from the original bid and any amendments, including changes of work scope, additions, extensions, change orders, and other instruments agreed to by the parties that have not been subject to subsequent open bid procedures.

If a higher federal rate is required due to partial federal funding or other federal participation, the higher rate must be paid.

For additional copies of this pamphlet, contact the nearest office of the Division of Labor Standards and Safety, Wage and Hour office or the Web address at: <http://labor.state.ak.us/lss/pamp600.htm>

For questions regarding prevailing wage or resident hire requirements, please contact the nearest Wage and Hour office. These offices are listed on Page xi.

Sincerely,

A handwritten signature in black ink that reads "Heidi Drygas".

Heidi Drygas
Commissioner

Table of Contents

Excerpts from Alaska Law

Sec. 36.05.005. Applicability.....	iii
Sec. 36.05.010. Wage rates on public construction.....	iii
Sec. 36.05.040. Filing schedule of employees, wages paid and other information.....	iii
Sec. 36.05.045. Notice of work and completion; withholding of payment	iii
Sec. 36.05.060. Penalty for violation of this chapter.....	iv
Sec. 36.05.070. Wage rates in specifications and contracts for public works	iv
Sec. 36.05.080. Failure to pay agreed wages	iv
Sec. 36.05.090. Payment of wages from withheld payments and listing contractors who violate contracts	iv
Sec. 36.05.900. Definition.	v

Additional Information

Laborer Classification Clarification.....	v
Accommodations and Per Diem	v
Apprentice Hiring Requirements	vi
Apprentice Rates.....	vii
Fringe Benefit Plans.....	vii
Special Prevailing Wage Rate Determination.....	vii
Request for Notice of Proposed Change of Labor Standards Regulations.....	ix
Alaska Hire Employment Preference.....	x
Debarment List	xi

Wage Rates	Pages 1-25
-------------------------	-------------------

Note to Readers: The statutes and administrative regulations listed in this publication were taken from the official codes, as of the effective date of the publication. However, there may be errors or omissions that have not been identified and changes that occurred after the publication was printed. This publication is intended as an informational guide only and is not intended to serve as a precise statement of the statutes and regulations of the State of Alaska. To be certain of the current laws and regulations, please refer to the official codes.

EXCERPTS FROM ALASKA LAW

(The following statute (36.05.005) applies to projects bid on or after October 20, 2011)

Sec. 36.05.005. Applicability.

This chapter applies only to a public construction contract that exceeds \$25,000.

Sec. 36.05.010. Wage rates on public construction.

A contractor or subcontractor who performs work on a public construction contract in the state shall pay not less than the current prevailing rate of wages for work of a similar nature in the region in which the work is done. The current prevailing rate of wages is that contained in the latest determination of prevailing rate of wages issued by the Department of Labor and Workforce Development at least 10 days before the final date for submission of bids for the contract. The rate shall remain in effect for the life of the contract or for 24 calendar months, whichever is shorter. At the end of the initial 24-month period, if new wage determinations have been issued by the department, the latest wage determination shall become effective for the next 24-month period or until the contract is completed, whichever occurs first. This process shall be repeated until the contract is completed.

Sec. 36.05.040. Filing schedule of employees, wages paid, and other information.

All contractors or subcontractors who perform work on a public construction contract for the state or for a political subdivision of the state shall, before the Friday of every second week, file with the Department of Labor and Workforce Development a sworn affidavit for the previous reporting period, setting out in detail the number of persons employed, wages paid, job classification of each employee, hours worked each day and week, and other information on a form provided by the Department of Labor and Workforce Development.

Sec. 36.05.045. Notice of work and completion; withholding of payment.

- (a) Before commencing work on a public construction contract, the person entering into the contract with a contracting agency shall designate a primary contractor for purposes of this section. Before work commences, the primary contractor shall file a notice of work with the Department of Labor and Workforce Development. The notice of work must list work to be performed under the public construction contract by each contractor who will perform any portion of work on the contract and the contract price being paid to each contractor. The primary contractor shall pay all filing fees for each contractor performing work on the contract, including a filing fee based on the contract price being paid for work performed by the primary contractor's employees. The filing fee payable shall be the sum of all fees calculated for each contractor. The filing fee shall be one percent of each contractor's contract price. The total filing fee payable by the primary contractor under this subsection may not exceed \$5,000. In this subsection, "contractor" means an employer who is using employees to perform work on the public construction contract under the contract or a subcontract.
- (b) Upon completion of all work on the public construction contract, the primary contractor shall file with the Department of Labor and Workforce Development a notice of completion together with payment of any additional filing fees owed due to increased contract amounts. Within 30 days after the department's receipt of the primary contractor's notice of completion, the department shall inform the contracting agency of the amount, if any, to be withheld from the final payment.
- (c) A contracting agency
- (1) may release final payment of a public construction contract to the extent that the agency has received verification from the Department of Labor and Workforce Development that
- (A) the primary contractor has complied with (a) and (b) of this section;
 - (B) the Department of Labor and Workforce Development is not conducting an investigation under this title; and
 - (C) the Department of Labor and Workforce Development has not issued a notice of a violation of this chapter to the primary contractor or any other contractors working on the public construction contract; and

- (2) shall withhold from the final payment an amount sufficient to pay the department's estimate of what may be needed to compensate the employees of any contractors under investigation on this construction contract, and any unpaid filing fees.
- (d) The notice and filing fee required under (a) of this section may be filed after work has begun if
 - (1) The public construction contract is for work undertaken in immediate response to an emergency; and
 - (2) The notice and fees are filed not later than 14 days after the work has begun.
- (e) A false statement made on a notice required by this section is punishable under AS 11.56.210.

Sec. 36.05.060. Penalty for violation of this chapter.

A contractor who violates this chapter is guilty of a misdemeanor and upon conviction is punishable by a fine of not less than \$100 nor more than \$1,000, or by imprisonment for not less than 10 days nor more than 90 days, or by both. Each day a violation exists constitutes a separate offense.

Sec. 36.05.070. Wage rates in specifications and contracts for public works.

- (a) The advertised specifications for a public construction contract that requires or involves the employment of mechanics, laborers, or field surveyors must contain a provision stating the minimum wages to be paid various classes of laborers, mechanics, or field surveyors and that the rate of wages shall be adjusted to the wage rate under AS 36.05.010.
- (b) Repealed by §17 ch 142 SLA 1972.
- (c) A public construction contract under (a) of this section must contain provisions that
 - (1) the contractor or subcontractors of the contractor shall pay all employees unconditionally and not less than once a week;
 - (2) wages may not be less than those stated in the advertised specifications, regardless of the contractual relationship between the contractor or subcontractors and laborers, mechanics, or field surveyors;
 - (3) the scale of wages to be paid shall be posted by the contractor in a prominent and easily accessible place at the site of the work;
 - (4) the state or a political subdivision shall withhold so much of the accrued payments as is necessary to pay to laborers, mechanics, or field surveyors employed by the contractor or subcontractors the difference between
 - (A) the rates of wages required by the contract to be paid laborers, mechanics, or field surveyors on the work; and
 - (B) the rates of wages in fact received by laborers, mechanics, or field surveyors.

Sec. 36.05.080. Failure to pay agreed wages.

Every contract within the scope of AS 36.05.070 shall contain a provision that if it is found that a laborer, mechanic, or field surveyor employed by the contractor or subcontractor has been or is being paid a rate of wages less than the rate of wages required by the contract to be paid, the state or its political subdivision may, by written notice to the contractor, terminate the contractor's right to proceed with the work or the part of the work for which there is a failure to pay the required wages and to prosecute the work to completion by contract or otherwise, and the contractor and the contractor's sureties are liable to the state or its political subdivision for excess costs for completing the work.

Sec. 36.05.090. Payment of wages from withheld payments and listing contractors who violate contracts.

- (a) The state disbursing officer in the case of a state public construction contract and the local fiscal officer in the case of a political subdivision public construction contract shall pay directly to laborers, mechanics, or field surveyors from accrued payments withheld under the terms of the contract the wages due laborers, mechanics, or field surveyors under AS 36.05.070.
- (b) The state disbursing officer or the local fiscal officer shall distribute to all departments of the state government and to all political subdivisions of the state a list giving the names of persons who have disregarded their obligations to employees. A person appearing on this list and a firm, corporation,

partnership, or association in which the person has an interest may not work as a contractor or subcontractor on a public construction contract for the state or a political subdivision of the state until three years after the date of publication of the list. If the accrued payments withheld under the contract are insufficient to reimburse all the laborers, mechanics, or field surveyors with respect to whom there has been a failure to pay the wages required under AS 36.05.070, the laborers, mechanics, or field surveyors have the right of action or intervention or both against the contractor and the contractor's sureties conferred by law upon persons furnishing labor or materials, and in the proceedings it is not a defense that the laborers, mechanics, or field surveyors accepted or agreed to accept less than the required rate of wages or voluntarily made refunds.

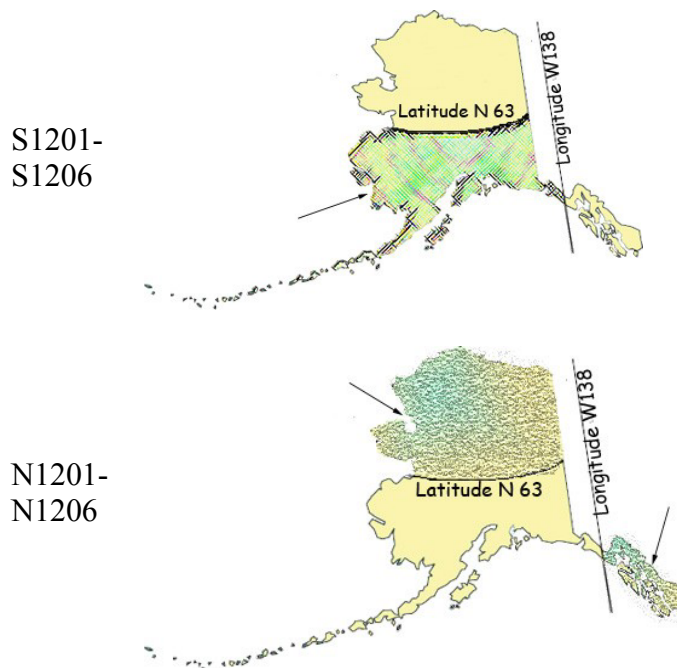
Sec. 36.05.900. Definition.

In this chapter, "contracting agency" means the state or a political subdivision of the state that has entered into a public construction contract with a contractor.

ADDITIONAL INFORMATION

LABORER CLASSIFICATION CLARIFICATION

The laborer rates categorized in class code S1201-S1206 apply in one area of Alaska; the area that is south of N63 latitude and west of W138 Longitude. The laborer rates categorized in class code N1201-N1206 apply in two areas of Alaska; the Alaska areas north of N63 latitude and east of W138 longitude. The following graphic representations should assist with clarifying the applicable wage rate categories:



ACCOMMODATIONS AND PER DIEM

The Alaska Department of Labor and Workforce Development has adopted a per diem requirement for blocklayers, bricklayers, carpenters, dredgemen, heat & frost insulators/asbestos workers, ironworkers, laborers, operative plasterers & cement masons, painters, piledrivers, power equipment operators, roofers, surveyors, truck

drivers/surveyors, and tunnel workers. This per diem rate creates an allowable alternative to providing board and lodging under the following conditions:

Employer-Provided Camp or Suitable Accommodations

Unless otherwise approved by the Commissioner, the employer shall ensure that a worker who is employed on a project that is 65 road miles or more from the international airport in either Fairbanks, Juneau or Anchorage or is inaccessible by road in a 2-wheel drive vehicle and who is not a domiciled resident of the locality of the project shall receive meals and lodging. Lodging shall be in accordance with all applicable state and federal laws. In cases where the project site is not road accessible, but the employee can reasonably get to the project worksite from their permanent residence within one hour, the Commissioner may waive these requirements for that employee upon a written request from the employer.

The term “domiciled resident” means a person living within 65 road miles of the project, or in the case of a highway project, the mid-point of the project, for at least 12 consecutive months prior to the award of the project. However, if the employer or person provides sufficient evidence to convince the department that a person has established a permanent residence and an intent to remain indefinitely within the distance to be considered a “domiciled resident,” the employer shall not be required to provide meals and lodging or pay per diem.

Where the employer provides or furnishes board, lodging or any other facility, the cost or amount thereof shall not be considered or included as part of the required prevailing wage basic hourly rate and cannot be applied to meet other fringe benefit requirements. The taxability of employer provided board and lodging shall be determined by the appropriate taxation enforcement authority.

Per Diem

Employers are encouraged to use commercial facilities and lodges; however, when such facilities are not available, per diem in lieu of meals and lodging must be paid at the basic rate of \$75.00 per day, or part thereof, the worker is employed on the project. Per diem shall not be allowed on highway projects west of Livengood on the Elliott Highway, at Mile 0 of the Dalton Highway to the North Slope of Alaska, north of Mile 20 on the Taylor Highway, east of Chicken, Alaska, on the Top of the World Highway and south of Tetlin Junction to the Alaska-Canada border.

The above-listed standards for room and board and per diem only apply to the crafts as identified in Pamphlet 600, *Laborers’ and Mechanics’ Minimum Rates of Pay*. Other crafts working on public construction projects shall be provided room and board at remote sites based on the department’s existing policy guidelines. In the event that a contractor provides lodging facilities, but no meals, the department will accept payment of \$36 per day for meals to meet the per diem requirements.

**** NEW ** APPRENTICE HIRING REQUIREMENTS**

On November 5, 2015, Governor Walker signed Administrative Order No. 278 to help ensure that there is an adequate pool of well-trained Alaskan construction workers to satisfy the industry needs. AO 278 replaced AO 226 and established a 15 percent goal for hiring federally registered apprentices in certain job categories on all public construction projects awarded by the Alaska Department of Transportation and Public Facilities and the Alaska Department of Administration that exceed \$2.5 million. The Order requires the commissioners of DOTPF and DOA to strive to require not less than 15 percent labor hours on a qualified project are performed by federally registered apprentices in the following classifications:

- | | | |
|---------------|-----------------------------------|--------------------------|
| Boilermakers | Elevator Constructors & Mechanics | Plumbers and Pipefitters |
| Bricklayers | Insulation Workers | Roofers |
| Carpenters | Ironworkers | Sheetmetal Workers |
| Cement Masons | Laborers | Surveyors |

Culinary Workers
Electricians
Equipment Operators

Mechanics
Millwrights
Painters
Piledriving Occupations

Sprinkler Fitters
Truck Drivers
Tug Boat Workers
Welders

A federally registered apprentice is enrolled in an apprentice training program under 29 U.S.C. 50 and 29 C.F.R. 29.1 – 29.13. Contractors will be expected to file apprentice utilization forms throughout the project or utilize the online certified payroll filing system available on the My Alaska website. A copy of AO 278 may be viewed in its entirety at <http://gov.state.ak.us/admin-orders/278.html> or call any Wage and Hour office to receive a copy.

APPRENTICE RATES

Apprentice rates at less than the minimum prevailing rates may be paid to apprentices according to an apprentice program which has been registered and approved by the Commissioner of the Alaska Department of Labor and Workforce Development in writing or according to a bona fide apprenticeship program registered with the U.S. Department of Labor, Office of Apprenticeship Training. **Any employee listed on a payroll at an apprentice wage rate who is not registered as above shall be paid the journeyman prevailing minimum wage in that work classification.** Wage rates are based on prevailing crew makeup practices in Alaska and apply to work performed regardless of either the quality of the work performed by the employee or the titles or classifications which may be assigned to individual employees.

FRINGE BENEFIT PLANS

Contractors/subcontractors may compensate fringe benefits to their employees in any one of three methods. The fringe benefits may be paid into a union trust fund, into an approved benefit plan, or paid directly on the paycheck as gross wages.

Where fringe benefits are paid into approved plans, funds, or programs including union trust funds, the payments must be contributed at least monthly. If contractors submit their own payroll forms and are paying fringe benefits into approved plans, funds, or programs, the employer's certification must include, in addition to those requirements of 8 AAC 30.020(c), a statement that fringe benefit payments have been or will be paid at least monthly. Contractors who pay fringe benefits to a plan must ensure the plan is one approved by the Internal Revenue Service and that the plan meets the requirements of 8 AAC 30.025 (eff. 3/2/08) in order for payments to be credited toward the prevailing wage obligation.

SPECIAL PREVAILING WAGE RATE DETERMINATION

Special prevailing wage rate determinations may be requested for special projects or a special worker classification if the work to be performed does not conform to traditional public construction for which a prevailing wage rate has been established under 8 AAC 30.050(a) of this section. Requests for special wage rate determinations must be in writing and filed with the Commissioner at least 30 days before the award of the contract. An applicant for a special wage rate determination shall have the responsibility to support the necessity for the special rate. An application for a special wage rate determination filed under this section must contain:

- (1) a specification of the contract or project on which the special rates will apply and a description of the work to be performed;
- (2) a brief narrative explaining why special wage rates are necessary;
- (3) the job class or classes involved;
- (4) the special wage rates the applicant is requesting, including survey or other relevant wage data to support the requested rates;
- (5) the approximate number of employees who would be affected; and
- (6) any other information which might be helpful in determining if special wage rates are appropriate.

Requests made pursuant to the above should be addressed to:

Director
Alaska Department of Labor and Workforce Development
Labor Standards & Safety Division
Wage and Hour Administration
P.O. Box 111149
Juneau, AK 99811-1149
-or-
Email: anchorage.lss-wh@alaska.gov

**LABOR STANDARDS REGULATIONS
NOTICE REQUEST**

If you would like to receive *notices of proposed changes to regulations* for Wage and Hour or Mechanical Inspection, please indicate below the programs for which you are interested in receiving such notices, print your name and email or mailing address in the space provided, and send this page to:

Alaska Department of Labor and Workforce Development
Labor Standards & Safety Division
Wage and Hour Administration
1251 Muldoon Road, Suite 113
Anchorage, AK 99504-2098
Email: anchorage.lss-wh@alaska.gov

For *REGULATIONS* information relating to any of the following:

- ⊗ Wage and Hour Title 23 Employment Practices
- ⊗ Wage and Hour Title 36 Public Works
- ⊗ Employment Agencies
- ⊗ Child Labor
- ⊗ Employment Preference (Local Hire)
- ⊗ Plumbing Code
- ⊗ Electrical Code
- ⊗ Boiler/Pressure Vessel Construction Code
- ⊗ Elevator Code
- ⊗ Certificates of Fitness
- ⊗ Recreational Devices

Request any of the following *PUBLICATIONS* by checking below:

- | | |
|---|---|
| ⊗ Wage and Hour Title 23 Employment Practices | <input type="checkbox"/> Public Construction Pamphlet |
| ⊗ Minimum Wage & Overtime Poster | <input type="checkbox"/> Public Construction Wage Rates |
| ⊗ Child Labor Poster | <input type="checkbox"/> Child Labor Pamphlet |

PLEASE NOTE: DUE TO INCREASED MAILING AND PRINTING COSTS, ONLY ONE OF EACH PUBLICATION REQUESTED WILL BE MAILED TO YOU. IF YOU WISH TO RECEIVE ADDITIONAL COPIES OR SUBSEQUENT PUBLICATIONS, PLEASE CONTACT OUR OFFICE AT (907) 269-4900.

Name: _____

Mailing Address: _____

Email Address: _____

**DEPARTMENT OF LABOR & WORKFORCE DEVELOPMENT
ALASKA EMPLOYMENT PREFERENCE INFORMATION**

By authority of AS 36.10.150 and 8 AAC 30.064, the Commissioner of Labor and Workforce Development has determined the State of Alaska to be a Zone of Underemployment. A Zone of Underemployment requires that Alaska residents who are eligible under AS 36.10.140 be given a minimum of 90 percent employment preference on public works contracts throughout the state in certain job classifications. **This 90 percent Alaska resident hiring preference applies on a project-by-project, craft-by-craft or occupational basis and must be met each workweek by each contractor/subcontractor in each of the following classifications:**

Boilermakers	Electricians	Laborers	Roofers
Bricklayers	Engineers & Architects	Mechanics	Sheet Metal Workers
Carpenters	Equipment Operators	Millwrights	Surveyors
Cement Masons	Foremen & Supervisors	Painters	Truck Drivers
Culinary Workers	Insulation Workers	Piledriving Occupations	Tug Boat Workers
	Ironworkers	Plumbers & Pipefitters	Welders

This determination became effective July 1, 2015, and remains in effect through June 30, 2017. This determination will be applied to projects with a bid submission deadline on or after July 1, 2015 and to projects previously covered by the 2013 Alaska employment preference determination. This will afford contractors an opportunity to consider the impacts of Alaska resident hire in their bids.

The first person on a certified payroll in any classification is called the "first worker" and is not required to be an Alaskan resident. However, once the contractor adds any more workers in the classification, then all workers in the classification are counted, and the 90 percent calculation is applied to compute the number of required Alaskans to be in compliance. To compute the number of Alaskan residents required in a workweek in a particular classification, multiply the total number of workers in the classification by 90 percent. The result is then rounded down to the nearest whole number to determine the number of Alaskans that must be employed in that classification.

If a worker works in more than one classification during a week, the classification in which they spent the most time would be counted for employment preference purposes. If the time is split evenly between two classifications, the worker is counted in both classifications.

If you have difficulty meeting the 90 percent requirement, an approved waiver must be obtained before a non-Alaska resident is hired who would put the contractor/subcontractor out of compliance (8 AAC 30.081 (e) (f)). The waiver process requires proof of an adequate search for qualified Alaskan workers. Qualified Alaska residents identified through the search must be hired before waivers for non-resident workers may be granted. To apply for a waiver, contact the nearest Wage and Hour Office for instructions.

Here is an example to apply the 90 percent requirement to four boilermaker workers. Multiply four workers by 90% and drop the fraction ($.90 \times 4 = 3.6 - .6 = 3$). The remaining number is the number of Alaskan resident boilermakers required to be in compliance in that particular classification for that week.

The penalties for being out of compliance are serious. AS 36.10.100 (a) states "A contractor who violates a provision of this chapter shall have deducted from amounts due to the contractor under the contract the prevailing wages which should have been paid to a displaced resident and these amounts shall be retained by the contracting agency." If a contractor/subcontractor is found to be out of compliance, penalties accumulate until they come into compliance.

Contractors are responsible for determining residency status. If you have difficulty determining whether a worker is an Alaska resident, you should contact the nearest Wage and Hour Office. Contact Wage and Hour in Anchorage at (907) 269-4900, in Fairbanks at (907) 451-2886, or in Juneau at (907) 465-4842.

Alaska Department of Labor and Workforce Development
Labor Standards & Safety Division
Wage and Hour Administration
Web site: <http://labor.state.ak.us/lss/pamp600.htm>

Anchorage

1251 Muldoon Road, Suite 113
Anchorage, Alaska 99504-2098
Phone: (907) 269-4900

Email:
anchorage.lss-wh@alaska.gov

Juneau

1111 W. 8th Street, Suite 302
Juneau, Alaska 99801
Phone: (907) 465-4842

Email:
juneau.lss-wh@alaska.gov

Fairbanks

Regional State Office Building
675 7th Ave., Station J-1
Fairbanks, Alaska 99701-4593
Phone: (907) 451-2886

Email:
fairbanks.lss@alaska.gov

DEBARMENT LIST

AS 36.05.090(b) states that “the state disbursing officer or the local fiscal officer shall distribute to all departments of the state government and to all political subdivisions of the state a list giving the names of persons who have disregarded their obligations to employees.”

A person appearing on the following debarment list and a firm, corporation, partnership, or association in which the person has an interest may not work as a contractor or subcontractor on a public construction contract for the state or a political subdivision of the state for three years from the date of debarment.

Company Name

Debarment Expires

Bengal Groups, LLC	November 3, 2017
Mohammed Ali, Individual	November 3, 2017
Fry’s Services, LLC	November 16, 2017
John Paul Freie, Individual	November 16, 2017
Pyramid Audio & Video, Ltd.	June 19, 2018
Jeffrey P. Schneider, Individual	June 19, 2018

Laborers' & Mechanics' Minimum Rates of Pay

Class Code	Classification of Laborers & Mechanics	BHR	H&W	PEN	TRN	Other	Benefits	THR
------------	--	-----	-----	-----	-----	-------	----------	-----

Boilermakers

A0101	Boilermaker (journeyman)	44.01	8.57	15.34	1.60	VAC	SAF	72.86
						3.00	0.34	

Bricklayers & Blocklayers

**See note on last page if remote site

A0201	Blocklayer	39.81	9.53	8.50	0.55	L&M		58.97
						0.15	0.43	

Bricklayer
 Marble or Stone Mason
 Refractory Worker (Firebrick, Plastic, Castable, and Gunitite Refractory Applications)
 Terrazzo Worker
 Tile Setter

A0202	Tuck Pointer Caulker	39.81	9.53	8.50	0.55	L&M		58.97
						0.15	0.43	

Cleaner (PCC)

A0203	Marble & Tile Finisher	33.94	9.53	8.50	0.55	L&M		53.10
						0.15	0.43	

Terrazzo Finisher

A0204	Torginal Applicator	37.88	9.53	8.50	0.55	L&M		57.04
						0.15	0.43	

Carpenters, Statewide

**See note on last page if remote site

A0301	Carpenter (journeyman)	38.09	9.78	13.61	0.70	L&M	SAF	62.43
						0.10	0.15	

Lather/Drywall/Acoustical

Cement Masons, Region I (North of N63 latitude)

**See note on last page if remote site

N0401	Group I, including:	37.50	7.43	11.80	1.18	L&M		58.01
						0.10		

Application of Sealing Compound
 Application of Underlayment
 Building, General
 Cement Mason (journeyman)
 Concrete

Wage benefits key: BHR=basic hourly rate; H&W=health and welfare; IAF=industry advancement fund; LEG=legal fund; L&M=labor/management fund; PEN=pension fund; SAF=safety; SUI=supplemental unemployment insurance; S&L=SUI & LEG combined; TRN=training; THR=total hourly rate; VAC=vacation

Class Code	Classification of Laborers & Mechanics	BHR	H&W	PEN	TRN	Other Benefits	THR
------------	--	-----	-----	-----	-----	----------------	-----

Cement Masons, Region I (North of N63 latitude)

**See note on last page if remote site

							L&M	
N0401	Group I, including:	37.50	7.43	11.80	1.18	0.10	58.01	
	Concrete Paving							
	Curb & Gutter, Sidewalk							
	Curing of All Concrete							
	Grouting & Caulking of Tilt-Up Panels							
	Grouting of All Plates							
	Patching Concrete							
	Screed Pin Setter							
	Spackling/Skim Coating							

N0402	Group II, including:	37.50	7.43	11.80	1.18	0.10	58.01
	Form Setter						

N0403	Group III, including:	37.50	7.43	11.80	1.18	0.10	58.01
	Concrete Saw (self-powered)						
	Curb & Gutter Machine						
	Floor Grinder						
	Pneumatic Power Tools						
	Power Chipping & Bushing						
	Sand Blasting Architectural Finish						
	Screed & Rodding Machine Operator						
	Troweling Machine Operator						

N0404	Group IV, including:	37.50	7.43	11.80	1.18	0.10	58.01
	Application of All Composition Mastic						
	Application of All Epoxy Material						
	Application of All Plastic Material						
	Finish Colored Concrete						
	Gunite Nozzleman						
	Hand Powered Grinder						
	Tunnel Worker						

N0405	Group V, including:	37.75	7.43	11.80	1.18	0.10	58.26
	Plasterer						

Cement Masons, Region II (South of N63 latitude)

**See note on last page if remote site

S0401	Group I, including:	37.25	7.43	11.80	1.18	0.10	57.76
--------------	---------------------	-------	------	-------	------	------	-------

Wage benefits key: BHR=basic hourly rate; H&W=health and welfare; IAF=industry advancement fund; LEG=legal fund; L&M=labor/management fund; PEN=pension fund; SAF=safety; SUI=supplemental unemployment insurance; S&L=SUI & LEG combined; TRN=training; THR=total hourly rate; VAC=vacation

Cement Masons, Region II (South of N63 latitude)

**See note on last page if remote site

S0401	Group I, including:	37.25	7.43	11.80	1.18		L&M	57.76
	Application of Sealing Compound							
	Application of Underlayment							
	Building, General							
	Cement Mason (journeyman)							
	Concrete							
	Concrete Paving							
	Curb & Gutter, Sidewalk							
	Curing of All Concrete							
	Grouting & Caulking of Tilt-Up Panels							
	Grouting of All Plates							
	Patching Concrete							
	Screed Pin Setter							
	Spackling/Skim Coating							
S0402	Group II, including:	37.25	7.43	11.80	1.18		L&M	57.76
	Form Setter							
S0403	Group III, including:	37.25	7.43	11.80	1.18		L&M	57.76
	Concrete Saw (self-powered)							
	Curb & Gutter Machine							
	Floor Grinder							
	Pneumatic Power Tools							
	Power Chipping & Bushing							
	Sand Blasting Architectural Finish							
	Screed & Rodding Machine Operator							
	Troweling Machine Operator							
S0404	Group IV, including:	37.25	7.43	11.80	1.18		L&M	57.76
	Application of All Composition Mastic							
	Application of All Epoxy Material							
	Application of All Plastic Material							
	Finish Colored Concrete							
	Gunite Nozzleman							
	Hand Powered Grinder							
	Tunnel Worker							
S0405	Group V, including:	37.50	7.43	11.80	1.18		L&M	58.01
	Plasterer							

Wage benefits key: BHR=basic hourly rate; H&W=health and welfare; IAF=industry advancement fund; LEG=legal fund; L&M=labor/management fund; PEN=pension fund; SAF=safety; SUI=supplemental unemployment insurance; S&L=SUI & LEG combined; TRN=training; THR=total hourly rate; VAC=vacation

Class Code	Classification of Laborers & Mechanics	BHR	H&W	PEN	TRN	Other	Benefits	THR
------------	--	-----	-----	-----	-----	-------	----------	-----

Culinary Workers * See note on last page

A0501	Baker/Cook	25.67	6.53	6.37			LEG	38.64
A0503	General Helper	22.62	6.53	6.37			LEG	35.59
	Housekeeper							
	Janitor							
	Kitchen Helper							
A0504	Head Cook	26.22	6.53	6.37			LEG	39.19
A0505	Head Housekeeper	23.04	6.53	6.37			LEG	36.01
	Head Kitchen Help							

Dredgemen
**See note on last page if remote site

A0601	Assistant Engineer	39.26	9.95	11.05	1.00		L&M	61.36
	Craneman							
	Electrical Generator Operator (primary pump/power barge/dredge)							
	Engineer							
	Welder							
A0602	Assistant Mate (deckhand)	38.10	9.95	11.05	1.00		L&M	60.20
A0603	Fireman	38.54	9.95	11.05	1.00		L&M	60.64
A0605	Leverman Clamshell	41.79	9.95	11.05	1.00		L&M	63.89
A0606	Leverman Hydraulic	40.03	9.95	11.05	1.00		L&M	62.13
A0607	Mate & Boatman	39.26	9.95	11.05	1.00		L&M	61.36
A0608	Oiler (dredge)	38.54	9.95	11.05	1.00		L&M	60.64

Electricians

A0701	Inside Cable Splicer	39.82	12.19	13.01	0.95		L&M LEG	66.32
--------------	----------------------	-------	-------	-------	------	--	---------	-------

Wage benefits key: BHR=basic hourly rate; H&W=health and welfare; IAF=industry advancement fund; LEG=legal fund; L&M=labor/management fund; PEN=pension fund; SAF=safety; SUI=supplemental unemployment insurance; S&L=SUI & LEG combined; TRN=training; THR=total hourly rate; VAC=vacation

Class Code	Classification of Laborers & Mechanics	BHR	H&W	PEN	TRN	Other	Benefits	THR
------------	--	-----	-----	-----	-----	-------	----------	-----

Electricians

A0702	Inside Journeyman Wireman, including: Technicians	39.49	12.19	13.25	0.95	L&M	LEG	66.23
A0703	Power Cable Splicer	52.27	12.19	18.76	0.95	L&M	LEG	84.52
A0704	Tele Com Cable Splicer	47.45	12.19	15.44	0.95	L&M	LEG	76.38
A0705	Power Journeyman Lineman, including: Power Equipment Operator Technician	50.52	12.19	18.71	0.95	L&M	LEG	82.72
A0706	Tele Com Journeyman Lineman, including: Technician Tele Com Equipment Operator	45.70	12.19	18.56	0.95	L&M	LEG	77.75
A0707	Straight Line Installer - Repairman	45.70	12.19	15.39	0.95	L&M	LEG	74.58
A0708	Powderman	48.52	12.19	18.65	0.95	L&M	LEG	80.66
A0710	Material Handler	26.15	11.64	4.78	0.15	L&M	LEG	43.02
A0712	Tree Trimmer Groundman	27.17	12.19	11.04	0.15	L&M	LEG	50.85
A0713	Journeyman Tree Trimmer	35.84	12.19	11.30	0.15	L&M	LEG	59.78
A0714	Vegetation Control Sprayer	39.29	12.19	11.40	0.15	L&M	LEG	63.33
A0715	Inside Journeyman Communications CO/PBX	38.07	12.19	12.96	0.95	L&M	LEG	64.52

Elevator Workers

A0802	Elevator Constructor	36.75	14.43	14.96	0.60	L&M	VAC	70.39
A0803	Elevator Constructor Mechanic	52.50	14.43	14.96	0.60	L&M	VAC	88.62

Wage benefits key: BHR=basic hourly rate; H&W=health and welfare; IAF=industry advancement fund; LEG=legal fund; L&M=labor/management fund; PEN=pension fund; SAF=safety; SUI=supplemental unemployment insurance; S&L=SUI & LEG combined; TRN=training; THR=total hourly rate; VAC=vacation

Class Code	Classification of Laborers & Mechanics	BHR	H&W	PEN	TRN	Other	Benefits	THR
------------	--	-----	-----	-----	-----	-------	----------	-----

Heat & Frost Insulators/Asbestos Workers
 **See note on last page if remote site

A0902	Asbestos Abatement-Mechanical Systems	37.38	8.84	9.51	1.20	SAF	0.12	57.05
A0903	Asbestos Abatement/General Demolition All Systems	37.38	8.84	9.51	1.20	SAF	0.12	57.05
A0904	Insulator, Group II	37.38	8.84	9.51	1.20	SAF	0.12	57.05
A0905	Fire Stop	37.38	8.84	9.51	1.20	SAF	0.12	57.05

IronWorkers
 **See note on last page if remote site

A1101	Ironworkers, including:	36.25	7.83	19.25	0.97	L&M	0.46	IAF	0.10	64.86
	Bender Operators									
	Bridge & Structural									
	Machinery Mover									
	Ornamental									
	Reinforcing									
	Rigger									
	Sheeter									
	Signalman									
	Stage Rigger									
	Toxic Haz-Mat Work									
	Welder									
A1102	Helicopter	37.25	7.83	19.25	0.97	L&M	0.46	IAF	0.10	65.86
	Tower (energy producing windmill type towers to include nacelle and blades)									
A1103	Fence/Barrier Installer	32.75	7.83	19.00	0.97	L&M	0.46	IAF	0.10	61.11
	Guard Rail Installer									
A1104	Guard Rail Layout Man	33.49	7.83	19.00	0.97	L&M	0.46	IAF	0.10	61.85

Laborers (The Alaska areas north of N63 latitude and east of W138 longitude)
 **See note on last page if remote site

N1201	Group I, including:	30.00	7.71	17.06	1.20	L&M	0.20	LEG	0.20	56.37
	Asphalt Worker (shovelman, plant crew)									

Wage benefits key: BHR=basic hourly rate; H&W=health and welfare; IAF=industry advancement fund; LEG=legal fund; L&M=labor/management fund; PEN=pension fund; SAF=safety; SUI=supplemental unemployment insurance; S&L=SUI & LEG combined; TRN=training; THR=total hourly rate; VAC=vacation

Laborers (The Alaska areas north of N63 latitude and east of W138 longitude)

**See note on last page if remote site

						L&M	LEG	
N1201	Group I, including:	30.00	7.71	17.06	1.20	0.20	0.20	56.37
	Brush Cutter							
	Camp Maintenance Laborer							
	Carpenter Tender or Helper							
	Choke Setter, Hook Tender, Rigger, Signalman							
	Concrete Labor (curb & gutter, chute handler, grouting, curing, screeding)							
	Crusher Plant Laborer							
	Demolition Laborer							
	Ditch Digger							
	Dumpman							
	Environmental Laborer (hazard/toxic waste, oil spill)							
	Fence Installer							
	Fire Watch Laborer							
	Flagman							
	Form Stripper							
	General Laborer							
	Guardrail Laborer, Bridge Rail Installer							
	Hydro-seeder Nozzleman							
	Laborer, Building							
	Landscaper or Planter							
	Laying of Mortarless Decorative Block (retaining walls, flowered decorative block 4 feet or less - highway or landscape work)							
	Material Handler							
	Pneumatic or Power Tools							
	Portable or Chemical Toilet Serviceman							
	Pump Man or Mixer Man							
	Railroad Track Laborer							
	Sandblast, Pot Tender							
	Saw Tender							
	Slurry Work							
	Steam Cleaner Operator							
	Steam Point or Water Jet Operator							
	Storm Water Pollution Protection Plan Worker (SWPPP Worker - erosion and sediment control Laborer)							
	Tank Cleaning							
	Utiliwalk & Utilidor Laborer							
	Watchman (construction projects)							
	Window Cleaner							

N1202	Group II, including:	31.00	7.71	17.06	1.20	0.20	0.20	57.37
--------------	----------------------	-------	------	-------	------	------	------	-------

- Burning & Cutting Torch
- Cement or Lime Dumper or Handler (sack or bulk)

Wage benefits key: BHR=basic hourly rate; H&W=health and welfare; IAF=industry advancement fund; LEG=legal fund; L&M=labor/management fund; PEN=pension fund; SAF=safety; SUI=supplemental unemployment insurance; S&L=SUI & LEG combined; TRN=training; THR=total hourly rate; VAC=vacation

Laborers (The Alaska areas north of N63 latitude and east of W138 longitude)

**See note on last page if remote site

					L&M	LEG	
N1202	Group II, including:	31.00	7.71	17.06	1.20	0.20	57.37
	Certified Erosion Sediment Control Lead (CESCL Laborer)						
	Choker Splicer						
	Chucktender (wagon, air-track & hydraulic drills)						
	Concrete Laborer (power buggy, concrete saws, pumpcrete nozzleman, vibratorman)						
	Culvert Pipe Laborer						
	Cured Inplace Pipelayer						
	Environmental Laborer (asbestos, marine work)						
	Foam Gun or Foam Machine Operator						
	Green Cutter (dam work)						
	Gunite Operator						
	Hod Carrier						
	Jackhammer or Pavement Breaker (more than 45 pounds)						
	Laser Instrument Operator						
	Laying of Mortarless Decorative Block (retaining walls, flowered decorative block over 4 feet - highway or landscape work)						
	Mason Tender & Mud Mixer (sewer work)						
	Pilot Car						
	Pipelayer Helper						
	Plasterer, Bricklayer & Cement Finisher Tender						
	Powderman Helper						
	Power Saw Operator						
	Railroad Switch Layout Laborer						
	Sandblaster						
	Scaffold Building & Erecting						
	Sewer Caulker						
	Sewer Plant Maintenance Man						
	Thermal Plastic Applicator						
	Timber Faller, Chainsaw Operator, Filer						
	Timberman						

					L&M	LEG	
N1203	Group III, including:	31.90	7.71	17.06	1.20	0.20	58.27
	Bit Grinder						
	Camera/Tool/Video Operator						
	Guardrail Machine Operator						
	High Rigger & Tree Topper						
	High Scaler						
	Multiplate						
	Plastic Welding						
	Slurry Seal Squeegee Man						
	Traffic Control Supervisor						

Wage benefits key: BHR=basic hourly rate; H&W=health and welfare; IAF=industry advancement fund; LEG=legal fund; L&M=labor/management fund; PEN=pension fund; SAF=safety; SUI=supplemental unemployment insurance; S&L=SUI & LEG combined; TRN=training; THR=total hourly rate; VAC=vacation

Class Code	Classification of Laborers & Mechanics	BHR	H&W	PEN	TRN	Other	Benefits	THR
------------	--	-----	-----	-----	-----	-------	----------	-----

Laborers (The Alaska areas north of N63 latitude and east of W138 longitude)

**See note on last page if remote site

N1203 Group III, including:	31.90	7.71	17.06	1.20		L&M	LEG	58.27
------------------------------------	-------	------	-------	------	--	----------------	------------	-------

Welding Certified (in connection with laborer's work)

N1204 Group IIIA	35.18	7.71	17.06	1.20		L&M	LEG	61.55
-------------------------	-------	------	-------	------	--	----------------	------------	-------

- Asphalt Raker, Asphalt Belly Dump Lay Down
- Drill Doctor (in the field)
- Driller (including, but not limited to, wagon drills, air-track drills, hydraulic drills)
- Licensed Powderman
- Pioneer Drilling & Drilling Off Tugger (all type drills)
- Pipelayers
- Storm Water Pollution Protection Plan Specialist (SWPPP Specialist)

N1205 Group IV	19.57	7.71	17.06	1.20		L&M	LEG	45.94
-----------------------	-------	------	-------	------	--	----------------	------------	-------

- Final Building Cleanup
- Permanent Yard Worker

N1206 Group IIIB	38.72	5.00	17.06	1.20		L&M	LEG	62.38
-------------------------	-------	------	-------	------	--	----------------	------------	-------

- Federally Licensed Powderman (Responsible Person in Charge)
- Grade Checking (setting or transferring of grade marks, line and grade, Stake Hopper)

Laborers (The area that is south of N63 latitude and west of W138 longitude)

**See note on last page if remote site

S1201 Group I, including:	30.00	7.71	17.06	1.20		L&M	LEG	56.37
----------------------------------	-------	------	-------	------	--	----------------	------------	-------

- Asphalt Worker (shovelman, plant crew)
- Brush Cutter
- Camp Maintenance Laborer
- Carpenter Tender or Helper
- Choke Setter, Hook Tender, Rigger, Signalman
- Concrete Labor (curb & gutter, chute handler, grouting, curing, screeding)
- Crusher Plant Laborer
- Demolition Laborer
- Ditch Digger
- Dumpman
- Environmental Laborer (hazard/toxic waste, oil spill)
- Fence Installer
- Fire Watch Laborer
- Flagman

Wage benefits key: BHR=basic hourly rate; H&W=health and welfare; IAF=industry advancement fund; LEG=legal fund; L&M=labor/management fund; PEN=pension fund; SAF=safety; SUI=supplemental unemployment insurance; S&L=SUI & LEG combined; TRN=training; THR=total hourly rate; VAC=vacation

Laborers (The area that is south of N63 latitude and west of W138 longitude)

**See note on last page if remote site

						L&M	LEG	
S1201	Group I, including:	30.00	7.71	17.06	1.20	0.20	0.20	56.37
	Form Stripper							
	General Laborer							
	Guardrail Laborer, Bridge Rail Installer							
	Hydro-seeder Nozzleman							
	Laborer, Building							
	Landscaper or Planter							
	Laying of Mortarless Decorative Block (retaining walls, flowered decorative block 4 feet or less - highway or landscape work)							
	Material Handler							
	Pneumatic or Power Tools							
	Portable or Chemical Toilet Serviceman							
	Pump Man or Mixer Man							
	Railroad Track Laborer							
	Sandblast, Pot Tender							
	Saw Tender							
	Slurry Work							
	Steam Cleaner Operator							
	Steam Point or Water Jet Operator							
	Storm Water Pollution Protection Plan Worker (SWPPP Worker - erosion and sediment control Laborer)							
	Tank Cleaning							
	Utiliwalk & Utilidor Laborer							
	Watchman (construction projects)							
	Window Cleaner							

						L&M	LEG	
S1202	Group II, including:	31.00	7.71	17.06	1.20	0.20	0.20	57.37

- Burning & Cutting Torch
- Cement or Lime Dumper or Handler (sack or bulk)
- Certified Erosion Sediment Control Lead (CESCL Laborer)
- Choker Splicer
- Chucktender (wagon, air-track & hydraulic drills)
- Concrete Laborer (power buggy, concrete saws, pumpcrete nozzleman, vibratorman)
- Culvert Pipe Laborer
- Cured Inplace Pipelayer
- Environmental Laborer (asbestos, marine work)
- Foam Gun or Foam Machine Operator
- Green Cutter (dam work)
- Gunite Operator
- Hod Carrier
- Jackhammer or Pavement Breaker (more than 45 pounds)

Wage benefits key: BHR=basic hourly rate; H&W=health and welfare; IAF=industry advancement fund; LEG=legal fund; L&M=labor/management fund; PEN=pension fund; SAF=safety; SUI=supplemental unemployment insurance; S&L=SUI & LEG combined; TRN=training; THR=total hourly rate; VAC=vacation

Class Code	Classification of Laborers & Mechanics	BHR	H&W	PEN	TRN	Other	Benefits	THR
------------	--	-----	-----	-----	-----	-------	----------	-----

Laborers (The area that is south of N63 latitude and west of W138 longitude)
 **See note on last page if remote site

S1202	Group II, including:	31.00	7.71	17.06	1.20	0.20	0.20	57.37
--------------	----------------------	-------	------	-------	------	------	------	-------

- Laser Instrument Operator
- Laying of Mortarless Decorative Block (retaining walls, flowered decorative block over 4 feet - highway or landscape work)
- Mason Tender & Mud Mixer (sewer work)
- Pilot Car
- Pipelayer Helper
- Plasterer, Bricklayer & Cement Finisher Tender
- Powderman Helper
- Power Saw Operator
- Railroad Switch Layout Laborer
- Sandblaster
- Scaffold Building & Erecting
- Sewer Caulker
- Sewer Plant Maintenance Man
- Thermal Plastic Applicator
- Timber Faller, Chainsaw Operator, Filer
- Timberman

S1203	Group III, including:	31.90	7.71	17.06	1.20	0.20	0.20	58.27
--------------	-----------------------	-------	------	-------	------	------	------	-------

- Bit Grinder
- Camera/Tool/Video Operator
- Guardrail Machine Operator
- High Rigger & Tree Topper
- High Scaler
- Multiplate
- Plastic Welding
- Slurry Seal Squeegee Man
- Traffic Control Supervisor
- Welding Certified (in connection with laborer's work)

S1204	Group IIIA	35.18	7.71	17.06	1.20	0.20	0.20	61.55
--------------	------------	-------	------	-------	------	------	------	-------

- Asphalt Raker, Asphalt Belly Dump Lay Down
- Drill Doctor (in the field)
- Driller (including, but not limited to, wagon drills, air-track drills, hydraulic drills)
- Licensed Powderman
- Pioneer Drilling & Drilling Off Tugger (all type drills)
- Pipelayers
- Storm Water Pollution Protection Plan Specialist (SWPPP Specialist)

Wage benefits key: BHR=basic hourly rate; H&W=health and welfare; IAF=industry advancement fund; LEG=legal fund; L&M=labor/management fund; PEN=pension fund; SAF=safety; SUI=supplemental unemployment insurance; S&L=SUI & LEG combined; TRN=training; THR=total hourly rate; VAC=vacation

Class Code	Classification of Laborers & Mechanics	BHR	H&W	PEN	TRN	Other	Benefits	THR
------------	--	-----	-----	-----	-----	-------	----------	-----

Laborers (The area that is south of N63 latitude and west of W138 longitude)
 **See note on last page if remote site

S1205	Group IV	19.57	7.71	17.06	1.20		L&M	LEG	45.94
	Final Building Cleanup Permanent Yard Worker								

S1206	Group IIIB	38.72	5.00	17.06	1.20		L&M	LEG	62.38
	Federally Licensed Powderman (Responsible Person in Charge) Grade Checking (setting or transferring of grade marks, line and grade, Stake Hopper)								

Millwrights

A1251	Millwright (journeyman)	36.49	9.78	11.26	1.00		L&M		58.98
A1252	Millwright Welder	37.49	9.78	11.26	1.00		L&M		59.98

Painters, Region I (North of N63 latitude)
 **See note on last page if remote site

N1301	Group I, including:	32.07	7.83	11.10	1.08		L&M		52.15
	Brush General Painter Hand Taping Hazardous Material Handler Lead-Based Paint Abatement Roll								

N1302	Group II, including:	32.59	7.83	11.10	1.08		L&M		52.67
	Bridge Painter Epoxy Applicator General Drywall Finisher Hand/Spray Texturing Industrial Coatings Specialist Machine/Automatic Taping Pot Tender Sandblasting Specialty Painter Spray Structural Steel Painter								

Wage benefits key: BHR=basic hourly rate; H&W=health and welfare; IAF=industry advancement fund; LEG=legal fund; L&M=labor/management fund; PEN=pension fund; SAF=safety; SUI=supplemental unemployment insurance; S&L=SUI & LEG combined; TRN=training; THR=total hourly rate; VAC=vacation

Class Code	Classification of Laborers & Mechanics	BHR	H&W	PEN	TRN	Other Benefits	THR
------------	--	-----	-----	-----	-----	----------------	-----

Painters, Region I (North of N63 latitude)

**See note on last page if remote site

N1302	Group II, including:	32.59	7.83	11.10	1.08	L&M 0.07	52.67
	Wallpaper/Vinyl Hanger						
N1304	Group IV, including:	37.88	7.83	11.86	1.05	0.05	58.67
	Glazier						
	Storefront/Automatic Door Mechanic						
N1305	Group V, including:	29.51	7.83	5.02	0.83	0.07	43.26
	Carpet Installer						
	Floor Coverer						
	Heat Weld/Cove Base						
	Linoleum/Soft Tile Installer						

Painters, Region II (South of N63 latitude)

**See note on last page if remote site

S1301	Group I, including :	30.31	7.83	10.85	1.08	L&M 0.07	50.14
	Brush						
	General Painter						
	Hand Taping						
	Hazardous Material Handler						
	Lead-Based Paint Abatement						
	Roll						
	Spray						
S1302	Group II, including :	31.56	7.83	10.85	1.08	L&M 0.07	51.39
	General Drywall Finisher						
	Hand/Spray Texturing						
	Machine/Automatic Taping						
	Wallpaper/Vinyl Hanger						
S1303	Group III, including :	31.66	7.83	10.85	1.08	L&M 0.07	51.49
	Bridge Painter						
	Epoxy Applicator						
	Industrial Coatings Specialist						
	Pot Tender						
	Sandblasting						
	Specialty Painter						
	Structural Steel Painter						

Wage benefits key: BHR=basic hourly rate; H&W=health and welfare; IAF=industry advancement fund; LEG=legal fund; L&M=labor/management fund; PEN=pension fund; SAF=safety; SUI=supplemental unemployment insurance; S&L=SUI & LEG combined; TRN=training; THR=total hourly rate; VAC=vacation

Class Code	Classification of Laborers & Mechanics	BHR	H&W	PEN	TRN	Other	Benefits	THR
------------	--	-----	-----	-----	-----	-------	----------	-----

Painters, Region II (South of N63 latitude)

**See note on last page if remote site

S1304	Group IV, including:	37.88	7.83	11.11	1.08		L&M 0.07	57.97
	Glazier							
	Storefront/Automatic Door Mechanic							
S1305	Group V, including:	29.51	7.83	5.02	0.83		L&M 0.07	43.26
	Carpet Installer							
	Floor Coverer							
	Heat Weld/Cove Base							
	Linoleum/Soft Tile Installer							

Piledrivers

**See note on last page if remote site

A1401	Piledriver	38.09	9.78	13.61	0.70		L&M 0.10	IAF 0.15	62.43
	Assistant Dive Tender								
	Carpenter/Piledriver								
	Rigger								
	Sheet Stabber								
	Skiff Operator								
A1402	Piledriver-Welder/Toxic Worker	39.09	9.78	13.61	0.70		L&M 0.10	IAF 0.15	63.43
A1403	Remotely Operated Vehicle Pilot/Technician	42.40	9.78	13.61	0.70		L&M 0.10	IAF 0.15	66.74
	Single Atmosphere Suit, Bell or Submersible Pilot								
A1404	Diver (working) ***See note on last page	82.20	9.78	13.61	0.70		L&M 0.10	IAF 0.15	106.54
A1405	Diver (standby) ***See note on last page	42.40	9.78	13.61	0.70		L&M 0.10	IAF 0.15	66.74
A1406	Dive Tender ***See note on last page	41.40	9.78	13.61	0.70		L&M 0.10	IAF 0.15	65.74
A1407	Welder (American Welding Society, Certified Welding Inspector)	43.65	9.78	13.61	0.70		L&M 0.10	IAF 0.15	67.99

Plumbers, Region I (North of N63 latitude)

N1501	Journeyman Pipefitter	41.21	7.75	13.45	1.25		L&M 1.10	S&L	64.76
	Plumber								

Wage benefits key: BHR=basic hourly rate; H&W=health and welfare; IAF=industry advancement fund; LEG=legal fund; L&M=labor/management fund; PEN=pension fund; SAF=safety; SUI=supplemental unemployment insurance; S&L=SUI & LEG combined; TRN=training; THR=total hourly rate; VAC=vacation

Plumbers, Region I (North of N63 latitude)

N1501	Journeyman Pipefitter	41.21	7.75	13.45	1.25	L&M	S&L	64.76
	Welder							

Plumbers, Region II (South of N63 latitude)

S1501	Journeyman Pipefitter	40.00	8.88	11.57	1.25	L&M		61.90
	Plumber							
	Welder							

Plumbers, Region IIA (1st Judicial District)

X1501	Journeyman Pipefitter	37.27	12.72	11.25	2.50	L&M		63.98
	Plumber							
	Welder							

Power Equipment Operators
 **See note on last page if remote site

A1601	Group I, including:	40.03	9.95	11.05	1.00	L&M		62.13
--------------	---------------------	-------	------	-------	------	-----	--	-------

- Asphalt Roller: Breakdown, Intermediate, and Finish
- Back Filler
- Barrier Machine (Zipper)
- Beltcrete with Power Pack & similar conveyors
- Bending Machine
- Boat Coxswain
- Bulldozer
- Cableways, Highlines & Cablecars
- Cleaning Machine
- Coating Machine
- Concrete Hydro Blaster
- Cranes (45 tons & under or 150 feet of boom & under (including jib & attachments))
 - (a) Hydralifts or Transporters, (all track or truck type)
- (b) Derricks
- (c) Overhead
- Crushers
 - Deck Winches, Double Drum
 - Ditching or Trenching Machine (16 inch or over)

Wage benefits key: BHR=basic hourly rate; H&W=health and welfare; IAF=industry advancement fund; LEG=legal fund; L&M=labor/management fund; PEN=pension fund; SAF=safety; SUI=supplemental unemployment insurance; S&L=SUI & LEG combined; TRN=training; THR=total hourly rate; VAC=vacation

Power Equipment Operators

**See note on last page if remote site

						L&M	
A1601	Group I, including:	40.03	9.95	11.05	1.00	0.10	62.13

- Drag Scraper, Yarder, and similar types
- Drilling Machines, Core, Cable, Rotary and Exploration
- Finishing Machine Operator, Concrete Paving, Laser Screed, Sidewalk, Curb & Gutter Machine
- Helicopters
- Hover Craft, Flex Craft, Loadmaster, Air Cushion, All-Terrain Vehicle, Rollagon, Bargecable, Nodwell, & Snow Cat
- Hydro Ax, Feller Buncher & similar
- Hydro Excavation (Vac-Truck and Similar)
- Licensed Line & Grade
- Loaders (2 1/2 yards through 5 yards, including all attachments):
 - (a) Forklifts (with telescopic boom & swing attachment)
 - (b) Front End & Overhead, (2-1/2 yards through 5 yards)
 - (c) Loaders, (with forks or pipe clamp)
 - (d) Loaders, (elevating belt type, Euclid & similar types)
 - Material Transfer Vehicle (Elevating Grader, Pickup Machine, and similar types)
 - Mechanic, Welder, Bodyman, Electrical, Camp & Maintenance Engineer
 - Micro Tunneling Machine
 - Mixers: Mobile type with hoist combination
 - Motor Patrol Grader
 - Mucking Machine: Mole, Tunnel Drill, Horizontal/Directional Drill Operator and/or Shield
 - Operator on Dredges
 - Piledriver Engineer, L.B. Foster, Puller or similar paving breaker
 - Plant Operator (Asphalt & Concrete)
 - Power Plant, Turbine Operator 200 k.w & over (power plants or combination of power units over 300 k.w.)
 - Remote Controlled Equipment
 - Scraper (through 40 yards)
 - Service Oiler/Service Engineer
 - Shot Blast Machine
 - Shovels, Backhoes, Excavators with all attachments, and Gradealls (3 yards & under)
 - Sideboom (under 45 tons)
 - Spreaders Topside (Asphalt Paver, Slurry machine, and similar types)
 - Sub Grader (Gurries, Reclaimer & similar types)
 - Tack Tractor
 - Truck Mounted Concrete Pump, Conveyor/Tele-belt, & Creter
 - Unlicensed Off-Road Hauler
 - Wate Kote Machine

Wage benefits key: BHR=basic hourly rate; H&W=health and welfare; IAF=industry advancement fund; LEG=legal fund; L&M=labor/management fund; PEN=pension fund; SAF=safety; SU=supplemental unemployment insurance; S&L=SUI & LEG combined; TRN=training; THR=total hourly rate; VAC=vacation

Class Code	Classification of Laborers & Mechanics	BHR	H&W	PEN	TRN	Other	Benefits	THR
------------	--	-----	-----	-----	-----	-------	----------	-----

Power Equipment Operators
 **See note on last page if remote site

A1602 Group IA, including:	41.79	9.95	11.05	1.00	0.10	L&M	63.89
-----------------------------------	-------	------	-------	------	------	----------------	-------

- Camera/Tool/Video Operator (Slipline)
- Certified Welder, Electrical Mechanic, Camp Maintenance Engineer, Mechanic (over 10,000 hours)
- Cranes (over 45 tons or 150 feet including jib & attachments)

(a) Clamshells & Draglines (over 3 yards)

(b) Tower Cranes

- Licensed Water/Waste Water Treatment Operator
- Loaders (over 5 yards)
- Motor Patrol Grader, Dozer, Grade Tractor, Roto-Mill/Profiler (finish: when finishing to final grade and/or to hubs, or for asphalt)
- Power Plants (1000 k.w. & over)
- Quad
- Scrapers (over 40 yards)
- Screed
- Shovels, Backhoes, Excavators with all attachments (over 3 yards)
- Sidebooms (over 45 tons)
- Slip Form Paver, C.M.I. & similar types

A1603 Group II, including:	39.26	9.95	11.05	1.00	0.10	L&M	61.36
-----------------------------------	-------	------	-------	------	------	----------------	-------

- Boiler - Fireman
- Cement Hogs & Concrete Pump Operator
- Conveyors (except those listed in Group I)
- Grade Checker
- Hoists on Steel Erection, Towermobiles & Air Tuggers
- Horizontal/Directional Drill Locator
- Licensed Grade Technician
- Locomotives, Rod & Geared Engines
- Mixers
- Screening, Washing Plant
- Sideboom (cradling rock drill, regardless of size)
- Skidder
- Trenching Machines (under 16 inches)
- Water/Waste Water Treatment Operator

A1604 Group III, including:	38.54	9.95	11.05	1.00	0.10	L&M	60.64
------------------------------------	-------	------	-------	------	------	----------------	-------

- "A" Frame Trucks, Deck Winches
- Bombardier (tack or tow rig)
- Boring Machine
- Brooms, Power
- Bump Cutter

Wage benefits key: BHR=basic hourly rate; H&W=health and welfare; IAF=industry advancement fund; LEG=legal fund; L&M=labor/management fund; PEN=pension fund; SAF=safety; SUI=supplemental unemployment insurance; S&L=SUI & LEG combined; TRN=training; THR=total hourly rate; VAC=vacation

Power Equipment Operators

**See note on last page if remote site

A1604 Group III, including:	38.54	9.95	11.05	1.00	L&M		0.10	60.64
------------------------------------	-------	------	-------	------	----------------	--	------	-------

- Compressor
- Farm Tractor
- Forklift, Industrial Type
- Gin Truck or Winch Truck (with poles when used for hoisting)
- Hoists, Air Tuggers, Elevators
- Loaders:

- (a) Elevating-Athey, Barber Greene & similar types
- (b) Forklifts or Lumber Carrier (on construction job sites)
- (c) Forklifts, (with tower)

- (d) Overhead & Front End, (under 2-1/2 yards)

Locomotives: Dinkey (air, steam, gas & electric) Speeders

Mechanics, Light Duty

- Oil, Blower Distribution
- Posthole Digger, Mechanical
- Pot Fireman (power agitated)
- Power Plant, Turbine Operator, (under 200 k.w.)
- Pumps, Water
- Roller (other than Asphalt)
- Saws, Concrete
- Skid Hustler
- Skid Steer (with all attachments)
- Stake Hopper
- Straightening Machine
- Tow Tractor

A1605 Group IV, including:	32.33	9.95	11.05	1.00	L&M		0.10	54.43
-----------------------------------	-------	------	-------	------	----------------	--	------	-------

- Crane Assistant Engineer/Rig Oiler
- Drill Helper
- Parts & Equipment Coordinator
- Spotter
- Steam Cleaner
- Swamper (on trenching machines or shovel type equipment)

Roofers

**See note on last page if remote site

A1701 Roofer & Waterproofer	42.62	11.75	2.91	0.81	L&M		0.10	0.03	58.22
------------------------------------	-------	-------	------	------	----------------	--	------	------	-------

A1702 Roofer Material Handler	29.83	11.75	2.91	0.81	L&M		0.10	0.03	45.43
--------------------------------------	-------	-------	------	------	----------------	--	------	------	-------

Wage benefits key: BHR=basic hourly rate; H&W=health and welfare; IAF=industry advancement fund; LEG=legal fund; L&M=labor/management fund; PEN=pension fund; SAF=safety; SUI=supplemental unemployment insurance; S&L=SUI & LEG combined; TRN=training; THR=total hourly rate; VAC=vacation

Sheet Metal Workers, Region I (North of N63 latitude)

							L&M	
N1801	Sheet Metal Journeyman	45.93	9.50	10.64	1.32	0.25		67.64

- Air Balancing and duct cleaning of HVAC systems
- Brazing, soldering or welding of metals
- Demolition of sheet metal HVAC systems
- Fabrication and installation of exterior wall sheathing, siding, metal roofing, flashing, decking and architectural sheet metal work
- Fabrication and installation of heating, ventilation and air conditioning ducts and equipment
- Fabrication and installation of louvers and hoods
- Fabrication and installation of sheet metal lagging
- Fabrication and installation of stainless steel commercial or industrial food service equipment
- Manufacture, fabrication assembly, installation and alteration of all ferrous and nonferrous metal work
- Metal lavatory partitions
- Preparation of drawings taken from architectural and engineering plans required for fabrication and erection of sheet metal work
- Sheet Metal shelving
- Sheet Metal venting, chimneys and breaching
- Skylight installation

Sheet Metal Workers, Region II (South of N63 latitude)

							L&M	
S1801	Sheet Metal Journeyman	40.79	9.50	11.72	1.18	0.33		63.52

- Air Balancing and duct cleaning of HVAC systems
- Brazing, soldering or welding of metals
- Demolition of sheet metal HVAC systems
- Fabrication and installation of exterior wall sheathing, siding, metal roofing, flashing, decking and architectural sheet metal work
- Fabrication and installation of heating, ventilation and air conditioning ducts and equipment
- Fabrication and installation of louvers and hoods
- Fabrication and installation of sheet metal lagging
- Fabrication and installation of stainless steel commercial or industrial food service equipment
- Manufacture, fabrication assembly, installation and alteration of all ferrous and nonferrous metal work
- Metal lavatory partitions
- Preparation of drawings taken from architectural and engineering plans required for fabrication and erection of sheet metal work
- Sheet Metal shelving
- Sheet Metal venting, chimneys and breaching

Wage benefits key: BHR=basic hourly rate; H&W=health and welfare; IAF=industry advancement fund; LEG=legal fund; L&M=labor/management fund; PEN=pension fund; SAF=safety; SU=supplemental unemployment insurance; S&L=SUI & LEG combined; TRN=training; THR=total hourly rate; VAC=vacation

Class Code	Classification of Laborers & Mechanics	BHR	H&W	PEN	TRN	Other	L&M	THR
------------	--	-----	-----	-----	-----	-------	-----	-----

Sheet Metal Workers, Region II (South of N63 latitude)

S1801	Sheet Metal Journeyman	40.79	9.50	11.72	1.18		L&M 0.33	63.52
--------------	------------------------	-------	------	-------	------	--	-------------	-------

Skylight installation

Sprinkler Fitters

A1901	Sprinkler Fitter	43.75	8.77	13.35	0.45		L&M 0.25	66.57
--------------	------------------	-------	------	-------	------	--	-------------	-------

Surveyors

**See note on last page if remote site

A2001	Chief of Parties	42.51	9.98	9.99	1.30		L&M 0.10	63.88
--------------	------------------	-------	------	------	------	--	-------------	-------

A2002	Party Chief	40.92	9.98	9.99	1.30		L&M 0.10	62.29
--------------	-------------	-------	------	------	------	--	-------------	-------

A2003	Line & Grade Technician/Office Technician	40.32	9.98	9.99	1.30		L&M 0.10	61.69
--------------	---	-------	------	------	------	--	-------------	-------

A2004	Associate Party Chief (including Instrument Person & Head Chain Person)	38.20	9.98	9.99	1.30		L&M 0.10	59.57
--------------	---	-------	------	------	------	--	-------------	-------

A2005	Stake Hop/Grademan	35.27	9.98	9.99	1.30		L&M 0.10	56.64
--------------	--------------------	-------	------	------	------	--	-------------	-------

A2006	Chain Person (for crews with more than 2 people)	33.86	9.98	9.99	1.30		L&M 0.10	55.23
--------------	--	-------	------	------	------	--	-------------	-------

Truck Drivers

**See note on last page if remote site

A2101	Group I, including:	39.29	9.98	9.99	1.30		L&M 0.10	60.66
--------------	---------------------	-------	------	------	------	--	-------------	-------

- Air/Sea Traffic Controllers
- Ambulance/Fire Truck Driver (EMT certified)
- Boat Coxswain
- Captains & Pilots (air & water)
- Deltas, Commanders, Rollagons, & similar equipment (when pulling sleds, trailers or similar equipment)
- Dump Trucks (including rockbuggy & trucks with pups) over 40 yards up to & including 60 yards
- Helicopter Transporter
- Lowboys, including attached trailers & jeeps, up to & including 12 axles (over 12 axles or 150 tons to be negotiated)

Wage benefits key: BHR=basic hourly rate; H&W=health and welfare; IAF=industry advancement fund; LEG=legal fund; L&M=labor/management fund; PEN=pension fund; SAF=safety; SUI=supplemental unemployment insurance; S&L=SUI & LEG combined; TRN=training; THR=total hourly rate; VAC=vacation

Truck Drivers

**See note on last page if remote site

A2101 Group I. including:	39.29	9.98	9.99	1.30	L&M		0.10	60.66
----------------------------------	-------	------	------	------	----------------	--	------	-------

- Material Coordinator and Purchasing Agent
- Ready-mix (over 12 yards up to & including 15 yards) (over 15 yards to be negotiated)
- Semi with Double Box Mixer
- Tireman, Heavy Duty/Fueler
- Water Wagon (250 Bbls and above)

A2102 Group 1A including:	40.56	9.98	9.99	1.30	L&M		0.10	61.93
----------------------------------	-------	------	------	------	----------------	--	------	-------

- Dump Trucks (including rockbuggy & trucks with pups) over 60 yards up to & including 100 yards (over 100 yards to be negotiated)
- Jeeps (driver under load)

A2103 Group II. including:	38.03	9.98	9.99	1.30	L&M		0.10	59.40
-----------------------------------	-------	------	------	------	----------------	--	------	-------

- All Deltas, Commanders, Rollagons, & similar equipment
- Boom Truck/Knuckle Truck (over 5 tons)
- Construction and Material Safety Technician
- Dump Trucks (including rockbuggy & trucks with pups) over 20 yards up to & including 40 yards
- Gin Pole Truck, Winch Truck, Wrecker (truck mounted "A" frame manufactured rating over 5 tons)
- Lowboys (including attached trailers & jeeps up to & including 8 axles)
- Mechanics
- Partsman
- Ready-mix (over 7 yards up to & including 12 yards)
- Stringing Truck
- Super Vac Truck/Cacasco Truck/Heat Stress Truck
- Turn-O-Wagon or DW-10 (not self loading)

A2104 Group III. including:	37.21	9.98	9.99	1.30	L&M		0.10	58.58
------------------------------------	-------	------	------	------	----------------	--	------	-------

- Batch Trucks (8 yards & up)
- Boom Truck/Knuckle Truck (up to & including 5 tons)
- Dump Trucks (including rockbuggy & trucks with pups) over 10 yards up to & including 20 yards
- Expeditor (electrical & pipefitting materials)
- Gin Pole Truck, Winch Truck, Wrecker (truck mounted "A" frame manufactured rating 5 tons & under)
- Greaser - Shop
- Oil Distributor Driver
- Thermal Plastic Layout Technician
- Traffic Control Technician

Wage benefits key: BHR=basic hourly rate; H&W=health and welfare; IAF=industry advancement fund; LEG=legal fund; L&M=labor/management fund; PEN=pension fund; SAF=safety; SUI=supplemental unemployment insurance; S&L=SUI & LEG combined; TRN=training; THR=total hourly rate; VAC=vacation

Class Code	Classification of Laborers & Mechanics	BHR	H&W	PEN	TRN	Other Benefits	THR
------------	--	-----	-----	-----	-----	----------------	-----

Truck Drivers
 **See note on last page if remote site

A2104	Group III, including:	37.21	9.98	9.99	1.30	L&M 0.10	58.58
--------------	-----------------------	-------	------	------	------	-------------	-------

Trucks/Jeeps (push or pull)

A2105	Group IV, including:	36.63	9.98	9.99	1.30	L&M 0.10	58.00
--------------	----------------------	-------	------	------	------	-------------	-------

- Air Cushion or similar type vehicle
- All Terrain Vehicle
- Buggymobile
- Bull Lift & Fork Lift, Fork Lift with Power Boom & Swing Attachment (over 5 tons)
- Bus Operator (over 30 passengers)
- Combination Truck-Fuel & Grease
- Compactor (when pulled by rubber tired equipment)
- Dump Trucks (including Rockbuggy & trucks with pups up to & including 10 yards)
- Dumpster
- Expeditor (general)
- Fire Truck/Ambulance Driver
- Flat Beds, Dual Rear Axle
- Foam Distributor Truck Dual Axle
- Front End Loader with Fork
- Grease Truck
- Hydro Seeder, Dual Axle
- Hyster Operators (handling bulk aggregate)
- Loadmaster (air & water operations)
- Lumber Carrier
- Ready-mix, (up to & including 7 yards)
- Rigger (air/water/oilfield)
- Semi or Truck & Trailer
- Tireman, Light Duty
- Track Truck Equipment
- Vacuum Truck, Truck Vacuum Sweeper
- Warehouseperson
- Water Truck (Below 250 Bbls)
- Water Truck, Dual Axle
- Water Wagon, Semi

A2106	Group V, including:	35.87	9.98	9.99	1.30	L&M 0.10	57.24
--------------	---------------------	-------	------	------	------	-------------	-------

- Batch Truck (up to & including 7 yards)
- Buffer Truck
- Bull Lifts & Fork Lifts, Fork Lifts with Power Boom & Swing Attachments (up to & including 5 tons)

Wage benefits key: BHR=basic hourly rate; H&W=health and welfare; IAF=industry advancement fund; LEG=legal fund; L&M=labor/management fund; PEN=pension fund; SAF=safety; SUI=supplemental unemployment insurance; S&L=SUI & LEG combined; TRN=training; THR=total hourly rate; VAC=vacation

Class Code	Classification of Laborers & Mechanics	BHR	H&W	PEN	TRN	Other	Benefits	THR
------------	--	-----	-----	-----	-----	-------	----------	-----

Truck Drivers

**See note on last page if remote site

						L&M	
A2106	Group V, including:	35.87	9.98	9.99	1.30	0.10	57.24
	Bus Operator (up to 30 passengers)						
	Farm Type Rubber Tired Tractor (when material handling or pulling wagons on a construction project)						
	Flat Beds, Single Rear Axle						
	Foam Distributor Truck Single Axle						
	Fuel Handler (station/bulk attendant)						
	Gear/Supply Truck						
	Gravel Spreader Box Operator on Truck						
	Hydro Seeders, Single axle						
	Pickups (pilot cars & all light-duty vehicles)						
	Rigger/Swamper						
	Tack Truck						
	Team Drivers (horses, mules, & similar equipment)						

Tunnel Workers, Laborers (The Alaska areas north of N63 latitude and east of W138 longitude)

**See note on last page if remote site

						L&M	LEG
N2201	Group I, including:	33.00	7.71	17.06	1.20	0.20	59.37
	Brakeman						
	Mucker						
	Nipper						
	Storm Water Pollution Protection Plan Worker (SWPPP Worker - erosion and sediment control Laborer)						
	Topman & Bull Gang						
	Tunnel Track Laborer						

						L&M	LEG
N2202	Group II, including:	34.10	7.71	17.06	1.20	0.20	60.47
	Burning & Cutting Torch						
	Certified Erosion Sediment Control Lead (CESCL Laborer)						
	Concrete Laborer						
	Jackhammer						
	Laser Instrument Operator						
	Nozzlemen, Pumpcrete or Shotcrete						
	Pipelayer Helper						

						L&M	LEG
N2203	Group III, including:	35.09	7.71	17.06	1.20	0.20	61.46
	Miner						
	Retimberman						

Wage benefits key: BHR=basic hourly rate; H&W=health and welfare; IAF=industry advancement fund; LEG=legal fund; L&M=labor/management fund; PEN=pension fund; SAF=safety; SUI=supplemental unemployment insurance; S&L=SUI & LEG combined; TRN=training; THR=total hourly rate; VAC=vacation

Tunnel Workers, Laborers (The Alaska areas north of N63 latitude and east of W138 longitude)
 **See note on last page if remote site

						L&M	LEG	
N2204	Group IIIA, including:	38.70	7.71	17.06	1.20	0.20	0.20	65.07
	Asphalt Raker, Asphalt Belly Dump Lay Down							
	Drill Doctor (in the field)							
	Driller (including, but not limited to wagon drills, air-track drills, hydraulic drills)							
	Licensed Powderman							
	Pioneer Drilling & Drilling Off Tugger (all type drills)							
	Pipelayer							
	Storm Water Pollution Protection Plan Specialist (SWPPP Specialist)							

						L&M	LEG	
N2206	Group IIIB, including:	42.59	5.00	17.06	1.20	0.20	0.20	66.25
	Federally Licensed Powderman (Responsible Person in Charge)							
	Grade Checking (setting or transferring of grade marks, line and grade, Stake Hopper)							

Tunnel Workers, Laborers (The area that is south of N63 latitude and west of W138 longitude)
 **See note on last page if remote site

						L&M	LEG	
S2201	Group I, including:	33.00	7.71	17.06	1.20	0.20	0.20	59.37
	Brakeman							
	Mucker							
	Nipper							
	Storm Water Pollution Protection Plan Worker (SWPPP Worker - erosion and sediment control Laborer)							
	Topman & Bull Gang							
	Tunnel Track Laborer							

						L&M	LEG	
S2202	Group II, including:	34.10	7.71	17.06	1.20	0.20	0.20	60.47
	Burning & Cutting Torch							
	Certified Erosion Sediment Control Lead (CESCL Laborer)							
	Concrete Laborer							
	Jackhammer							
	Laser Instrument Operator							
	Nozzlemen, Pumpcrete or Shotcrete							
	Pipelayer Helper							

						L&M	LEG	
S2203	Group III, including:	35.09	7.71	17.06	1.20	0.20	0.20	61.46
	Miner							
	Retimberman							

Wage benefits key: BHR=basic hourly rate; H&W=health and welfare; IAF=industry advancement fund; LEG=legal fund; L&M=labor/management fund; PEN=pension fund; SAF=safety; SUI=supplemental unemployment insurance; S&L=SUI & LEG combined; TRN=training; THR=total hourly rate; VAC=vacation

Class Code	Classification of Laborers & Mechanics	BHR	H&W	PEN	TRN	Other	Benefits	THR
------------	--	-----	-----	-----	-----	-------	----------	-----

Tunnel Workers, Laborers (The area that is south of N63 latitude and west of W138 longitude)

**See note on last page if remote site

S2204 Group IIIA, including:	38.70	7.71	17.06	1.20		L&M	LEG	65.07
-------------------------------------	-------	------	-------	------	--	----------------	------------	-------

- Asphalt Raker, Asphalt Belly Dump Lay Down
- Drill Doctor (in the field)
- Driller (including, but not limited to wagon drills, air-track drills, hydraulic drills)
- Licensed Powderman
- Pioneer Drilling & Drilling Off Tugger (all type drills)
- Pipelayer
- Storm Water Pollution Protection Plan Specialist (SWPPP Specialist)

S2206 Group IIIB, including:	42.59	5.00	17.06	1.20		L&M	LEG	66.25
-------------------------------------	-------	------	-------	------	--	----------------	------------	-------

- Federally Licensed Powderman (Responsible Person in Charge)
- Grade Checking (setting or transferring of grade marks, line and grade, Stake Hopper)

Tunnel Workers, Power Equipment Operators

**See note on last page if remote site

A2207 Group I	44.03	9.95	11.05	1.00		L&M		66.13
----------------------	-------	------	-------	------	--	----------------	--	-------

A2208 Group IA	45.97	9.95	11.05	1.00		L&M		68.07
-----------------------	-------	------	-------	------	--	----------------	--	-------

A2209 Group II	43.19	9.95	11.05	1.00		L&M		65.29
-----------------------	-------	------	-------	------	--	----------------	--	-------

A2210 Group III	42.39	9.95	11.05	1.00		L&M		64.49
------------------------	-------	------	-------	------	--	----------------	--	-------

A2211 Group IV	35.56	9.95	11.05	1.00		L&M		57.66
-----------------------	-------	------	-------	------	--	----------------	--	-------

* A remote site is isolated and relatively distant from the amenities of civilization, and usually far from the employee's home. As a condition of employment, the workers must eat, sleep, and socialize at the worksite and remain there for extended periods.

** This classification must receive board and lodging under certain conditions. A per diem option of \$75 is an alternative to providing meals and lodging. See Page v for an explanation.

*** Work in combination of classifications: Employees working in any combination of classifications within the diving crew (working diver, standby diver, and tender) in a shift are paid in the classification with the highest rate for a minimum of 8 hours per shift.

Wage benefits key: BHR=basic hourly rate; H&W=health and welfare; IAF=industry advancement fund; LEG=legal fund; L&M=labor/management fund; PEN=pension fund; SAF=safety; SUI=supplemental unemployment insurance; S&L=SUI & LEG combined; TRN=training; THR=total hourly rate; VAC=vacation

**Class
Code Classification of Laborers & Mechanics**

BHR H&W PEN TRN Other Benefits THR
