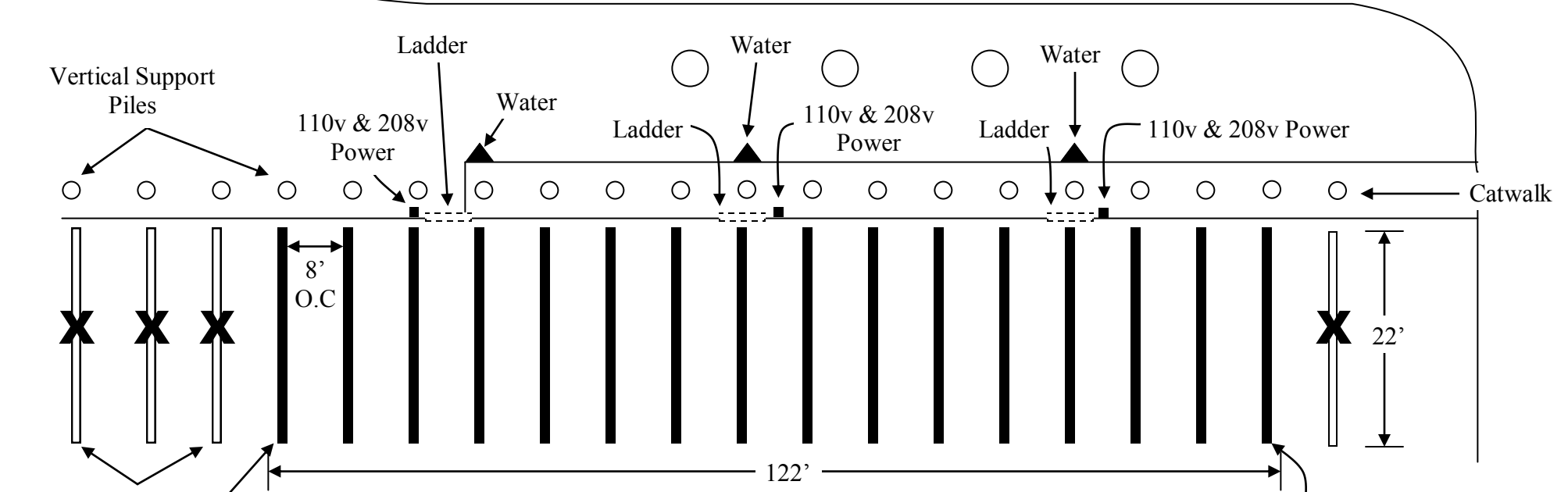
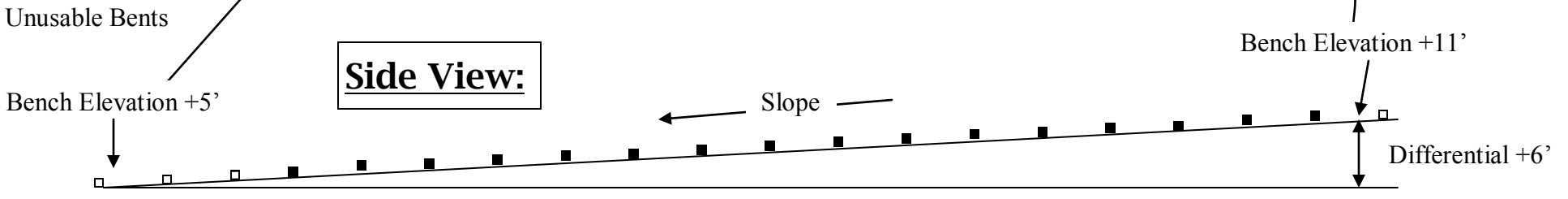


Homer Wood Grid

Birds Eye View:



Side View:



Rules & Restrictions:

- The maximum length allowed is 59 feet, and a 50 ton limit.
- Personnel must be on watch at all times!
- Secure a line from as high as possible on the vessel to a Deadman on shore or to Vertical Support Piles. Lines may need to be moved around cross-bracing as the tide rises and falls.
- Sandblasting is not permitted on the grid, as well as any type of activity that would result in paints or non-marine growth particles landing onto the grid work platform or into the water, such as high PSI water blasting (pressure washing).
- Location of the bents are marked above them in red reflective tape.