

**NOTICE OF MEETING
REGULAR MEETING**

- 1. CALL TO ORDER**
- 2. APPROVAL OF THE AGENDA**
- 3. PUBLIC COMMENTS FOR ITEMS ON THE AGENDA**
- 4. RECONSIDERATION**
- 5. SYNOPSIS APPROVAL**
- 6. VISITORS**
- 7. PENDING BUSINESS**
 - A. ADA Self-Evaluation and Transition Plan
 - a. Report from ADA Symposium
 - b. Building Survey Scheduling
- 8. NEW BUSINESS**
 - A. Kachemak Bay Water Trail Grant
- 9. INFORMATIONAL ITEMS**
- 10. COMMENTS OF THE AUDIENCE**
- 11. COMMENTS OF CITY STAFF**
- 12. COMMENTS OF THE COMMITTEE**
- 13. ADJOURNMENT NEXT REGULAR MEETING IS
SCHEDULED for JUNE 13, 2017 in the City Hall Cowles
Council Chambers located at 491 E. Pioneer Ave, Homer,
Alaska.**



City of Homer

www.cityofhomer-ak.gov

Office of the City Clerk

491 East Pioneer Avenue
Homer, Alaska 99603

clerk@cityofhomer-ak.gov

(p) 907-235-3130

(f) 907-235-3143

Memorandum

TO: ADA Compliance Committee

FROM: Melissa Jacobsen, MMC, City Clerk, ADA Coordinator

DATE: June 2, 2017

SUBJECT: Staff Report

The National ADA Symposium in Chicago was a great learning experience for me and I'll give a verbal report at the meeting.

I'd like to look at scheduling some time the week of July 10th and also the week of July 24th to continue with building surveys.

We've completed the surveys for the Airport and City Hall. The remaining buildings we can work on include:

- Library
- Animal Shelter
- Harbormaster's Office
- HERC Gym
- Public Works
- Public Restrooms

Check your calendars and we can talk about availability and what to tackle next.



95 Sterling Highway, Suite 2, Homer, Alaska 99603
Website: <http://www.kachemakbaywatertrail.org/>
Email address: kbwt@homer.alaska.org

Good News!

The Homer Kachemak Bay Rotary Club has been awarded a \$3000 grant from Rotary District 5010 to purchase portable beach access mats to improve wheelchair accessibility to Homer's beaches. Two of the 5'x 15' mats will be installed at the KBWT Trailhead Picnic Shelter adjacent to the Fishing Hole on the spit. Other mats will be available to water taxis, groups or individuals in order to improve access to beaches in Homer and across the bay.

Bad News (not really - just a worthy challenge)

The Rotary grant is a matching grant, which requires a local match of \$3000. This match can come in the form of cash donations of any amount. A total of \$6000 will be spent to improve accessibility in Homer.

If more than \$3000 is raised, those funds will go towards more mats.

Please consider making a cash donation to this great project.

Sincerely,

Dave Brann - Co-chair Kachemak Bay Water Trail
907-235-6018

Robert Archibald - Co-Chair Kachemak Bay Water Trail
907-299-0852

Beach Access Mat

The PathMat flexible surface reinforcement product, PathMat™ Beach Access Mat, has been specifically developed for use in permanent or temporary recreation access applications. Utilizing the proven oscillated mesh design ensures that rigidity and strength are preserved over soft sand surfaces while the elastomeric material is able to contour to undulating surfaces. This environmentally friendly, slip resistant product is easily installed and able to be removed and reinstalled per environmental regulations. Developed specifically for both animal and people traffic, the product provides a barefoot friendly surface for beach goers. Wherever a water pervious, enhanced-grip walkway access is required, Fiberweb's PathMat™ product is the solution.

- Portable and easily removable rollout beach mat
- Pedestrian and wheelchair accessible
- Oscillated mesh provides strength over sand, pebble and turf surfaces
- Adapts smoothly to contoured surfaces
- Slip resistant surface providing a safe surface in wet conditions
- Minimal maintenance easy to use beach access mat
- Visually attractive design guides guests to desired locations

PathMat™ Beach Access Mat is available in roll form allowing for a quick roll and pin installation. The UV stabilized elastomeric material is recycleable after use reducing its environmental impact. The material thickness, durability of construction and portability of the product make it the perfect solution for providing accessible beach pathways.



PathMat™ Beach Access Mat can be used in a multitude of applications - wherever recreation access is required for walking and wheelchair accessibility. The mat is also able to be cut and formed around existing beach structures in addition to protected native beach dunes.



PathMat™ Beach Access Mat used for a beach access walkway

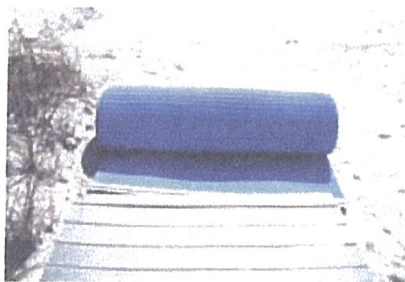


AccessRec LLC
55 Park Slope Clifton, NJ 07011
Tel: 973-955-0514 Fax: 201-624-7007

AccessRec, LLC

Beach Access Mat

- Lightweight design (0.76lbs/ft²) allows for ease of installation. Two people can install a 5ft x 32ft section in just 10 minutes.
- The elastomeric material provides safe edges that do not require secondary finishing. This highly reduces the risk for injury to bare feet.
- The blue color of the PathMat™ provides a surface that is highly visible delineating the route for guests to access recreation areas.
- The oscillated mesh provides a low maintenance surface that is easily maintained. The product can be cleaned by use of a broom, blower, or pressure washer.



PathMat™ Beach Access Mat - Rolled



Un-rolling prior to installation



Pinning down the ends

Technical Information

Please contact our technical sales team for further technical literature or advice:

- Specification & Installation guidance
- Product data sheets
- Case studies
- Installation locations

Fixing Pins & Pegs



Steel U-pins to secure PathMat™ to the ground.

PRODUCT	U-PINS
MATERIAL	REBAR TYPE GALVANIZED
SIZE (mm)	16in x 6in x 3/8in dia.
OUTER	10 pack
PART No.	118939

Technical Specifications

ROLL SIZE	MESH THICKNESS	COLOR	WEIGHT	TENSILE STRENGTH	MATERIAL	PART No.
5ft x 32ft	0.53in	Light Blue	0.76lbs/ft ²	12kN/m	Elastomeric PE Blend	118380

Access Mat

By AccessRec, LLC

AccessMat™ is a portable and removable rollout access route that can be used in a multitude of applications for individuals of all abilities (pedestrians and wheelchairs access), as well as strollers.

Enjoy the beach with family & friends!

Proudly manufacturing and
supplying the world's best
beach access mats and
surfaces to meet all your
needs at the best price!

www.AccessRec.com



Comfortable and Safe

Developed specifically for pedestrian traffic, AccessMat provides the friendliest surface for barefoot beach goers. Wherever a water pervious, enhanced grip walkway access is required AccessMat Beach Access Mat is the solution. AccessMat polyester material provides the safest edges that do not require secondary finishing. This highly reduces the risk of injury to bare feet or cutting your hands when installing or removing AccessMat. Our AccessMat's cool surface lends to the barefoot users' comfort, especially on those hot, sunny days!

Environmentally Friendly & Recyclable

This environmentally friendly product is easily installed and removed per environmental regulations. The mat is also able to be cut and formed around existing beach structures, in addition to protected native beach dunes. The UV stabilized polyester material is recyclable after use reducing its environmental impact.

AccessRec, LLC

AccessRec, LLC

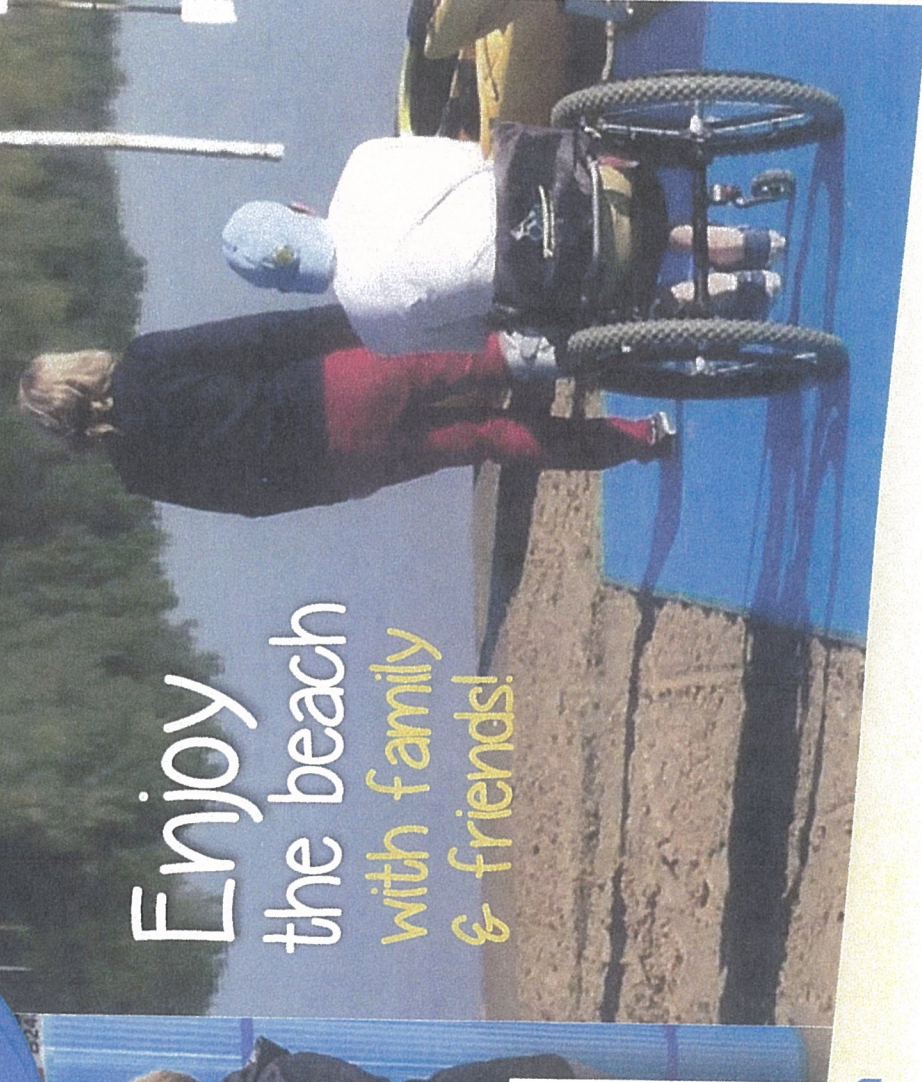
55 Park Slope
Clifton, NJ 07011

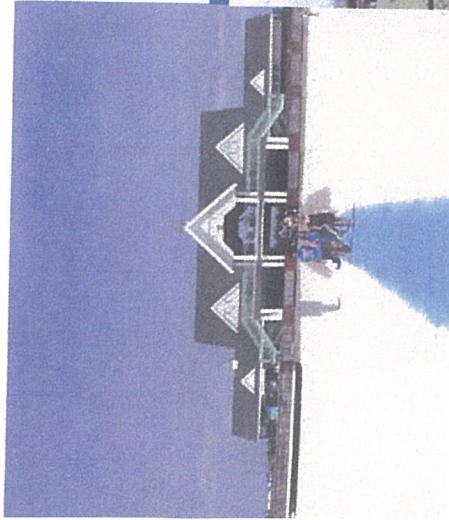
Ph: +1-973-955-0514

Ph: +1-201-321-8506

Fax: +1-201-624-7007

www.AccessRec.com





Increase Beach Accessibility

Counties, Cities, Towns, National & State Parks, other government and non-profit organizations officials, as well as any individual willing to increase accessibility to their beaches should consider providing our ABA/ADA beach compliant AccessMat system to comply with the Architectural Barriers Act and the Americans with Disabilities Act (ADA) guidelines.

AccessMat Beach Access Mats have been specifically developed for use in **permanent or temporary** recreation access applications. AccessMat is a **portable and removable** rollout access route that can be used in a **multitude of applications** for individuals of all abilities (pedestrians and wheelchairs access), as well as strollers, and more particularly in beach environments.

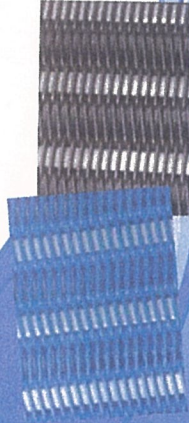


Aesthetically Pleasing

Visually attractive, the blue color of the AccessMat provides a surface that is highly visible, delineating the route to access recreation areas for people with visual impairments, while the brown color perfectly blends into the landscape.

Available in blue or brown color.

AccessMat can be offered in 5' or 6' width by 33', 50', 75' and 100' length. AccessMat™ can be offered in any length (starting at 15' long) to meet any of your needs.



Affordable

Designed & finished in the United States, starting at \$8 per square foot AccessRec LLC provides the most affordable way to create a beach access route. Especially when compared to the costs required in frequent replacement and extensive installation, maintenance or repair of our competitors, our AccessMat is the most economical solution on the market.

Quick Installation and Maintenance

AccessMat Beach Access Mat is available in roll form allowing for a quick roll and pin installation. Its lightweight design (0.405 lbs/) allows for ease of installation. Simply unroll your mat and stake it down using our oversized metal or plastic spikes (10" to 20" long). When the beach season is over, AccessMat can easily be removed as its structure does not allow sand to get stuck under it. Two people can install a 5' x 100' section in just 10 minutes. Minimal maintenance – it can be cleaned by use of a broom, blower, or pressure washer – sand goes through the permeable structure of the mat and does not get stuck under the surface of the mat.



Durable and Lightweight

The durability of construction and portability of the product make it the perfect solution for providing accessible beach pathways. Utilizing the benefits of polyester ensures that rigidity and strength are preserved over soft sand surfaces, while the polyester material is able to contour to undulating surfaces. Weighing only 0.405 lbs/sqft AccessMat can easily be carried by 1-2 people. At the end of the season simply roll back your AccessMat and store it until the next beach season. Unlike some of our competitors' products, your mat will remain as lightweight as the first time you put it down, as sand does not get stuck under the flat polyester surface. AccessMat comes with a 1 year warranty*.

