

ADDENDUM NO. #1

Project: Kachemak Drive Water and Sewer Improvements (Phase III)
Addendum Issue Date: August 26, 2016
Bid Date: September 1, 2016 @ 2:00 PM (Thursday)
Previous Addenda Issued: None
Issued By: Carey Meyer
City Engineer
City of Homer
Homer, AK 99603
cmeyer@ci.homer.ak.us

Bidders must acknowledge receipt of this addendum prior to the date set for bid opening by one of the following methods:

- (1) By acknowledging receipt of this addendum in the bid submitted (**use addendum acknowledgement form provided in bid documents**).
- (2) By facsimile (fax) or email which will need to include a reference to the project and each of the addendum numbers.

The bid documents require acknowledgement individually of all addenda to the drawings and/or specifications. This is a mandatory requirement and any bid received without acknowledgment of receipt of addenda may cause the bid to be considered non-responsive.

ITEM 1 – Please manually correct the EEO-1 form to reflect the correct project name (Kachemak Drive Water and Sewer Improvements - Phase III)

ITEM 2 – Where can I obtain the seed mix specified?

Contact: Mat-Su Copper River District Office
1509 S Georgeson Road
Palmer, AK 99645
907-745-3360

Contractor shall make reasonable efforts to obtain specified mix. Similar mix will be approved if specified mix not readily available.

ITEM 3 – I can't print the soils information contained in the bid document appendix.

Attached (hopefully) is a better copy.

ITEM 4 – Can water services from the main to the property line be HDPE ?

No.

ITEM 5 – The call for trace wire on the directional bore pipe is conflicting. Is it required?

Yes.

ITEM 6 – What is required length of pile for pile supported hydrant?

Pile length shall be twenty feet.

ITEM 7 – There is an anode detail on the plans, where are they required?

No anodes are required on the project. Ignore anode details.

ITEM 8 – Will seeding specified be completed this fall or next spring?

Complete required seeding immediately after trenches are backfilled.

ITEM 8 – The water main profile consists of many grade breaks. Can we smooth this profile when constructing?

Yes.

ITEM 8 – Can I amend by bid by fax?

Yes. Once a hard copy of your bid has been submitted to the City Clerk, you can amend the bid by fax.

END ADDENDUM #1



A report prepared for

City of Homer
3575 Heath Street
Homer, AK 99603

and

Bristol Environmental and Engineering Services Corp.
111 W. 16th Avenue, Third Floor
Anchorage, AK 99501-5109

Geotechnical Exploration and Engineering Recommendations

Kachemak Drive Water and Sewer Homer, Alaska

By

Handwritten signature of Susan Wilson in black ink.

Susan Wilson
Geologist

Handwritten signature of Jeremiah Drage in black ink.

Jeremiah Drage, P.E.
Civil Engineer

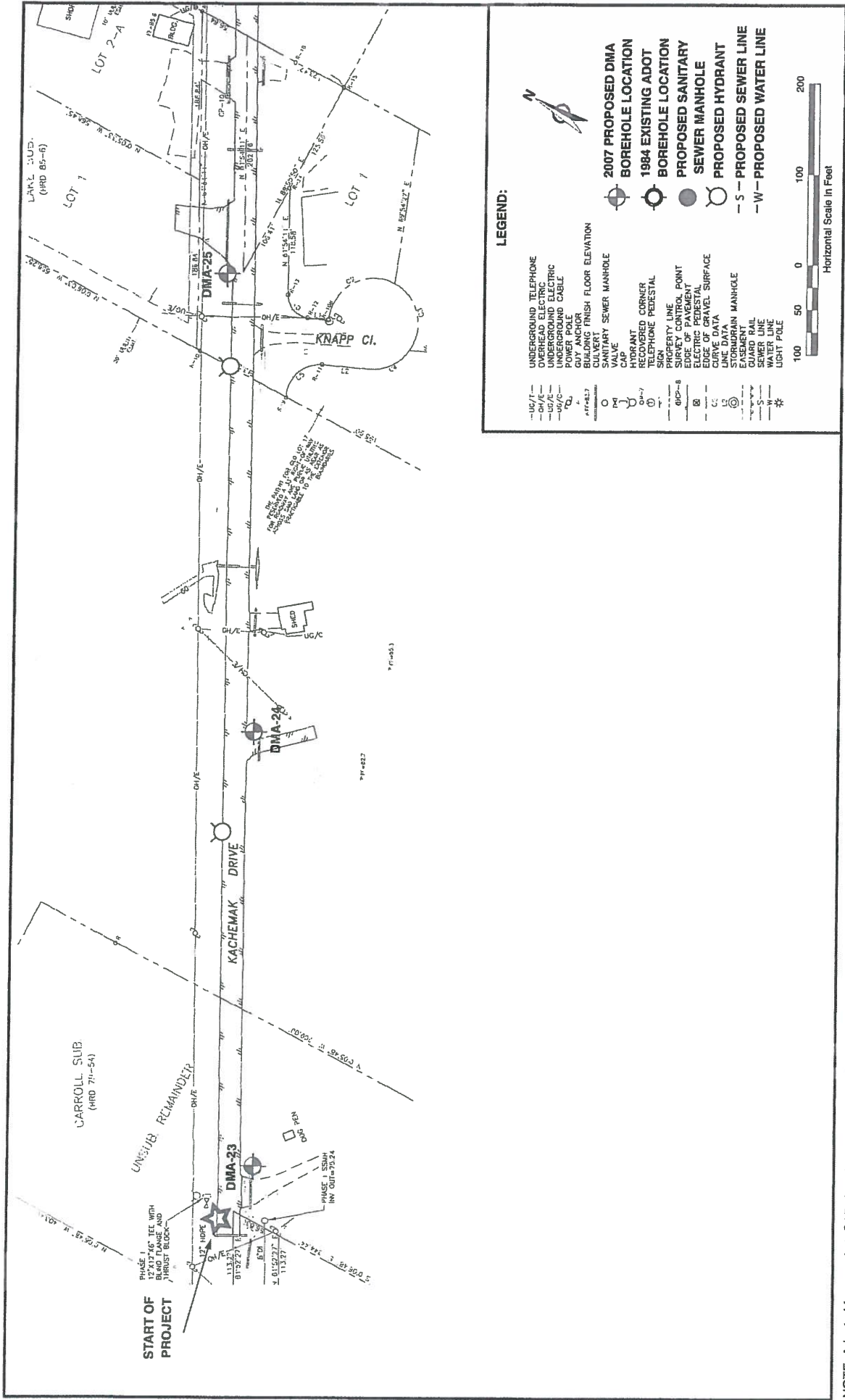
DMA Job No. 4248.001

November 19, 2008



Duane Miller Associates LLC

5821 Arctic Boulevard, Suite A
Anchorage, AK 99518-1654
(907) 644-3200 Fax 644-0507



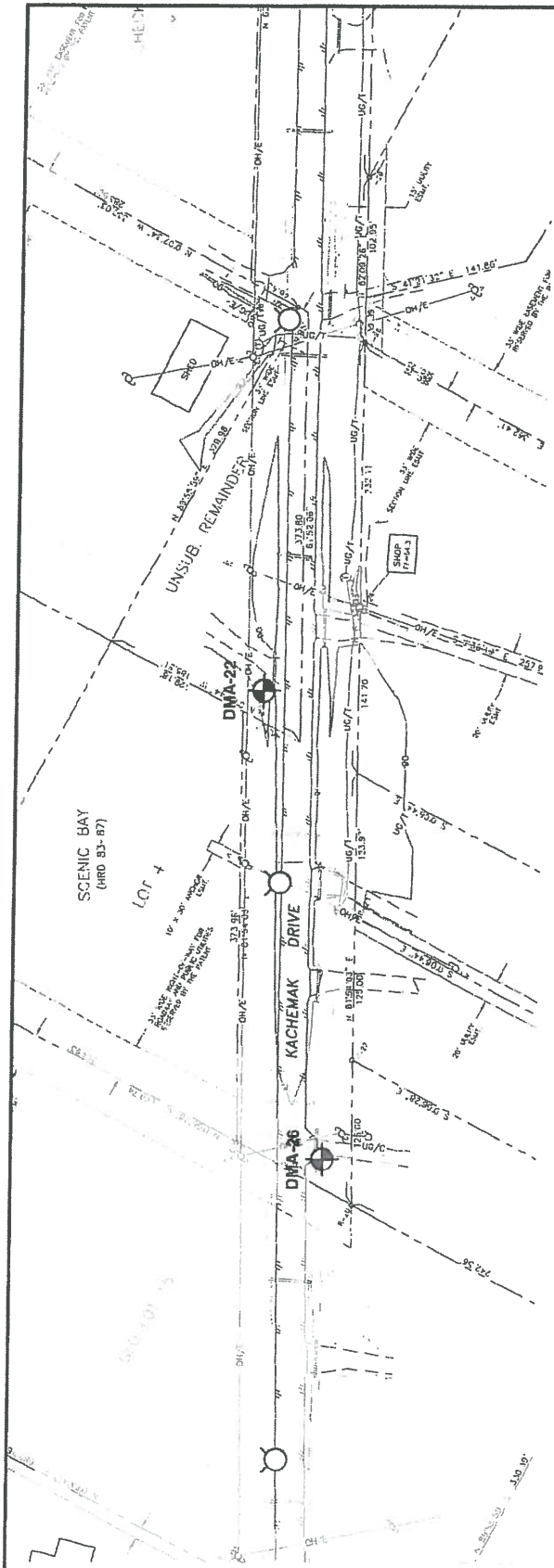
NOTE: Adapted from an AutoCAD dwg dated 6/27/2007, © Bristol Environmental and Engineering Services Corp.

Duane Miller Associates LLC

Job No. 4248.001

Date: November 2008

TEST BORING LOCATIONS
Phase II: Kachemak Dr Water and Sewer
Homer, Alaska
Plate
2.01



LEGEND:

- UG/1- UNDERGROUND TELEPHONE
- OH/E- OVERHEAD ELECTRIC
- UG/E- UNDERGROUND ELECTRIC
- UG/C- UNDERGROUND CABLE
- PROPERTY CORNER
- GUY ANCHOR
- BUILDING FINISH FLOOR ELEVATION
- CULVERT
- SANITARY SEWER MANHOLE
- HYDRANT
- RECOVERED CORNER
- TELEPHONE PEDESTAL
- SIGN
- PROPERTY LINE
- SURVEY CONTROL POINT
- EDGE OF PAVEMENT
- ELECTRIC PEDESTAL
- EDGE OF GRAVEL SURFACE
- CURVE DATA
- LINE DATA
- STORMDRAIN MANHOLE
- STORMDRAIN
- SEWER LINE
- WATER LINE
- LIGHT POLE

- 2007 PROPOSED DMA
- BOREHOLE LOCATION
- 1984 EXISTING ADOT
- BOREHOLE LOCATION
- PROPOSED SANITARY
- SEWER MANHOLE
- PROPOSED HYDRANT
- S- PROPOSED SEWER LINE
- W- PROPOSED WATER LINE



Horizontal Scale in Feet

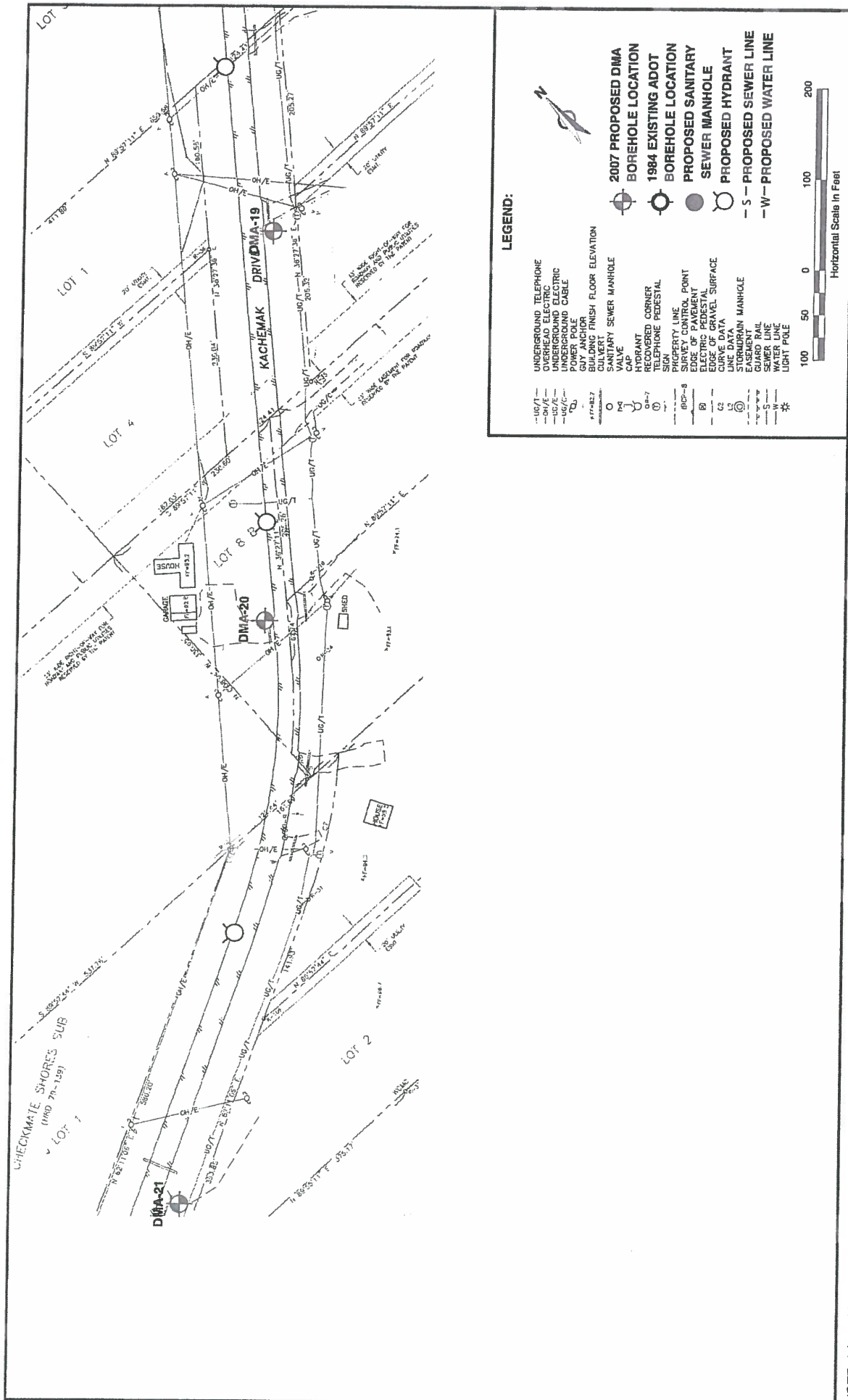
NOTE: Adapted from an AutoCAD dwg dated 6/27/2007, © Bristol Environmental and Engineering Services Corp.

Duane Miller Associates LLC
 Job No.: 4248.001
 Date: November 2008

TEST BORING LOCATIONS
 Phase II: Kachemak Dr Water and Sewer
 Homer, Alaska

Plate

2.02



LEGEND:

- UG/1--- UNDERGROUND TELEPHONE
- OH/A--- OVERHEAD ELECTRIC
- UG/E--- UNDERGROUND ELECTRIC
- UG/C--- UNDERGROUND CABLE
- W/P--- WATER PIPE
- S/P--- SANITARY SEWER PIPE
- B/F--- BUILDING FINISH FLOOR ELEVATION
- S/S--- SANITARY SEWER MANHOLE
- H/V--- HYDRANT
- R/C--- RECOVERED CORNER
- T/P--- TELEPHONE PEDESTAL
- R/L--- RIGGING LINE
- S/C--- SURVEY CONTROL POINT
- E/P--- EDGE OF PAVEMENT
- E/PD--- ELECTRIC PEDESTAL
- C/GS--- CURB OF GRAVEL SURFACE
- L/D--- LINE DATA
- S/M--- STORMDRAIN MANHOLE
- E/--- EASEMENT
- S/W--- SEWER LINE
- W--- WATER LINE
- L/P--- LIGHT POLE

- 2007 PROPOSED BOREHOLE LOCATION
- 1984 EXISTING BOREHOLE LOCATION
- PROPOSED SANITARY SEWER MANHOLE
- PROPOSED HYDRANT
- S--- PROPOSED SEWER LINE
- W--- PROPOSED WATER LINE

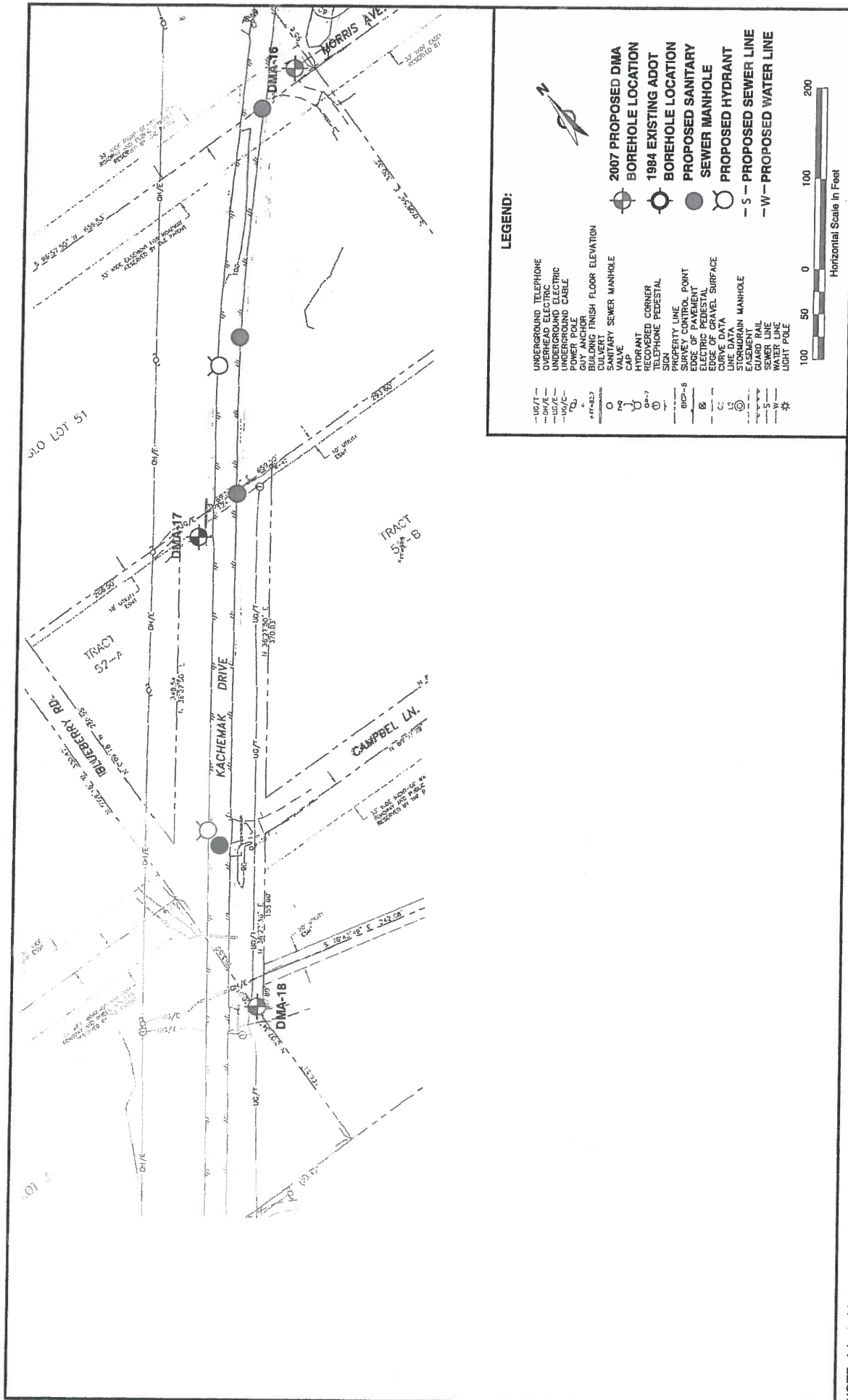


Horizontal Scale in Feet

NOTE: Adapted from an AutoCAD dwg dated 6/27/2007, © Bristol Environmental and Engineering Services Corp.

Duane Miller Associates LLC
 Job No.: 4248.001
 Date: November 2008

TEST BORING LOCATIONS
 Phase II: Kachemak Dr. Water and Sewer
 Homer, Alaska
 Plate 2.03



NOTE: Adapted from an AutoCAD dwg dated 6/27/2007, © Bristol Environmental and Engineering Services Corp.

Duane Miller Associates LLC

Job No.: 4248.001

Date: November 2008

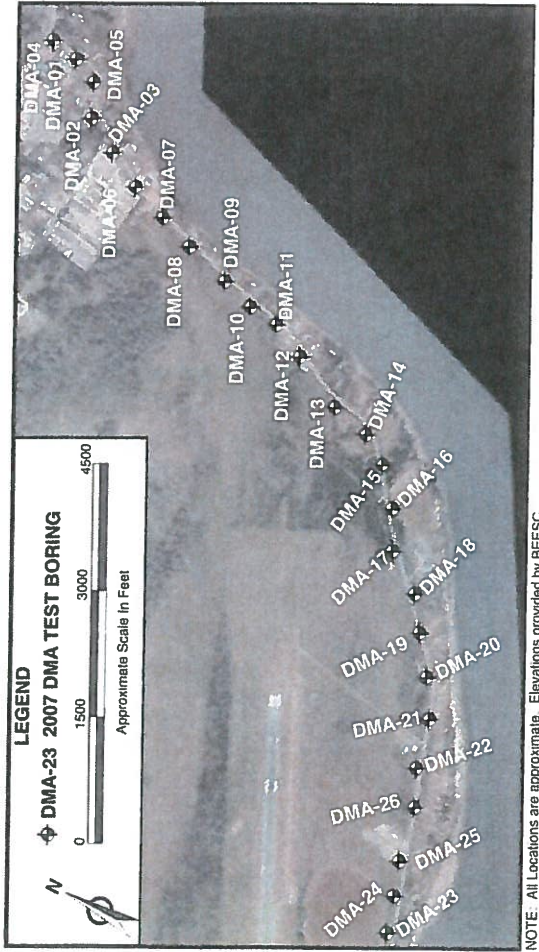
Test BORING LOCATIONS

Phase II: Kachemak Dr Water and Sewer

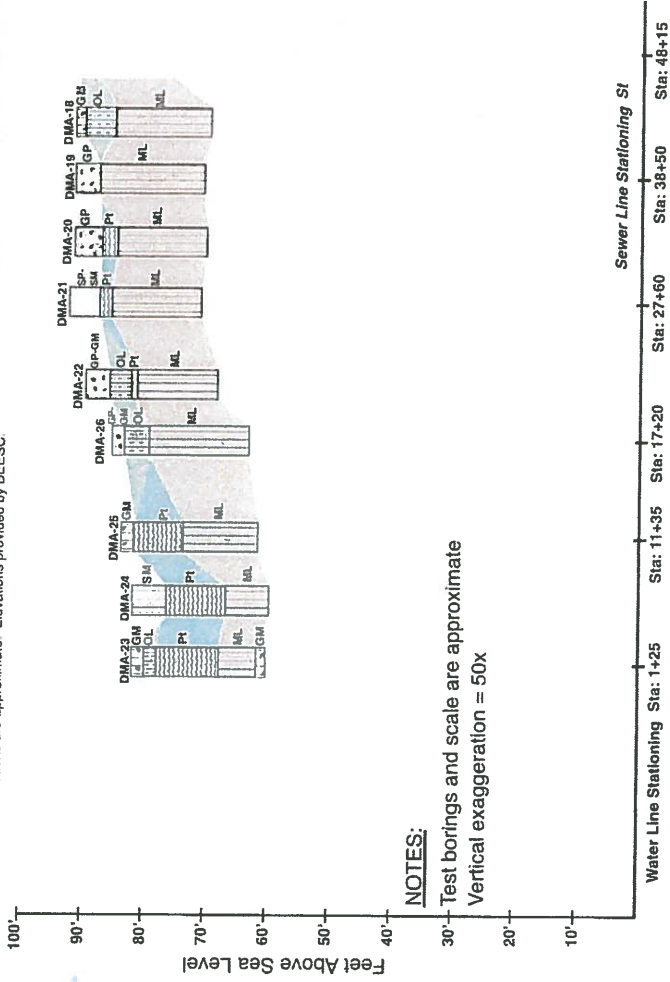
Homer, Alaska

Plate

2.04



NOTE: All Locations are approximate. Elevations provided by BEESC.

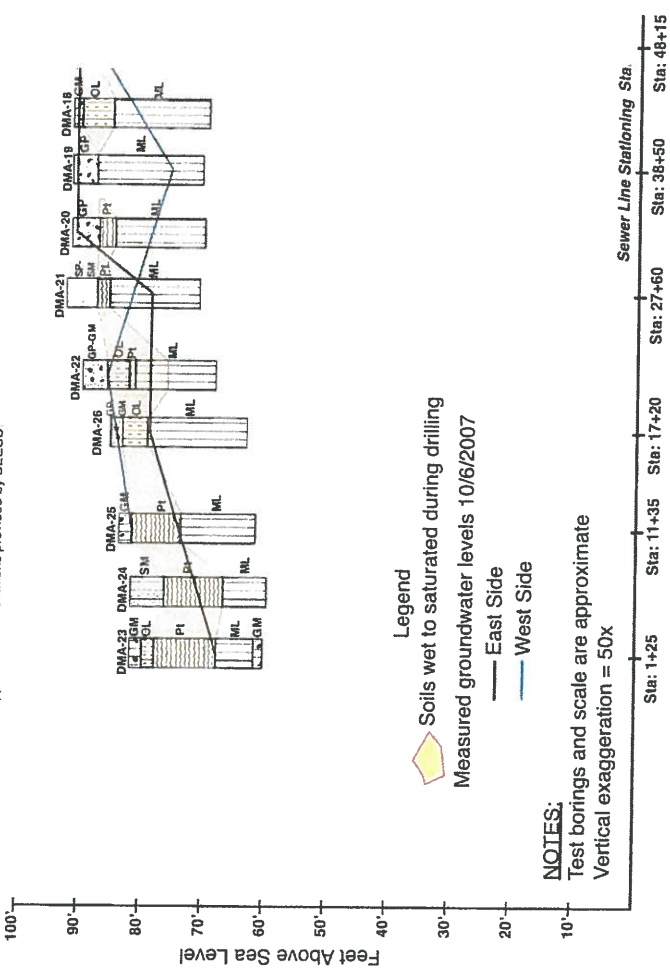
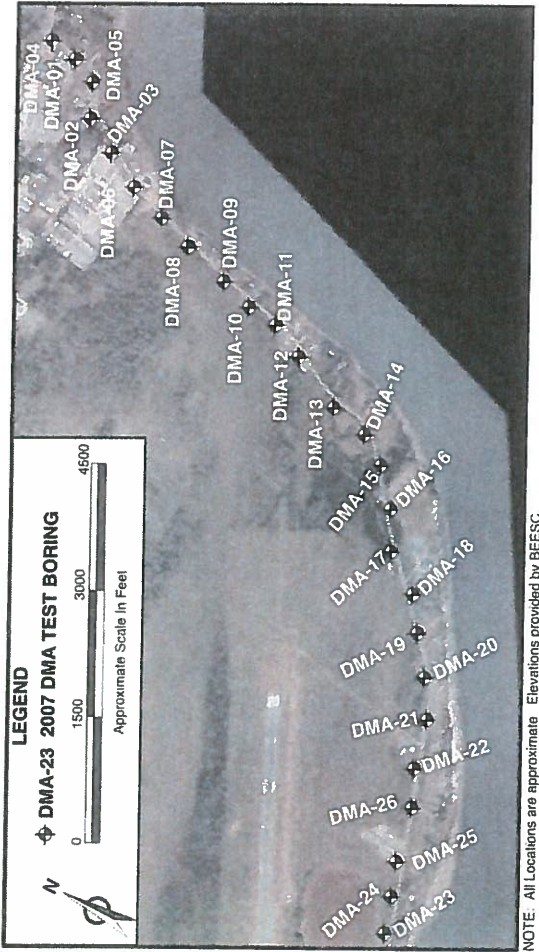


NOTES:

Test borings and scale are approximate
Vertical exaggeration = 50x



Duane Miller Associates LLC
Job No.: 4248.001
Date: November 2008



NOTES:
 Test borings and scale are approximate
 Vertical exaggeration = 50x

Duane Miller Associates LLC
 Job No.: 4248.001
 Date: November 2008

Appendix A: Test Boring Logs

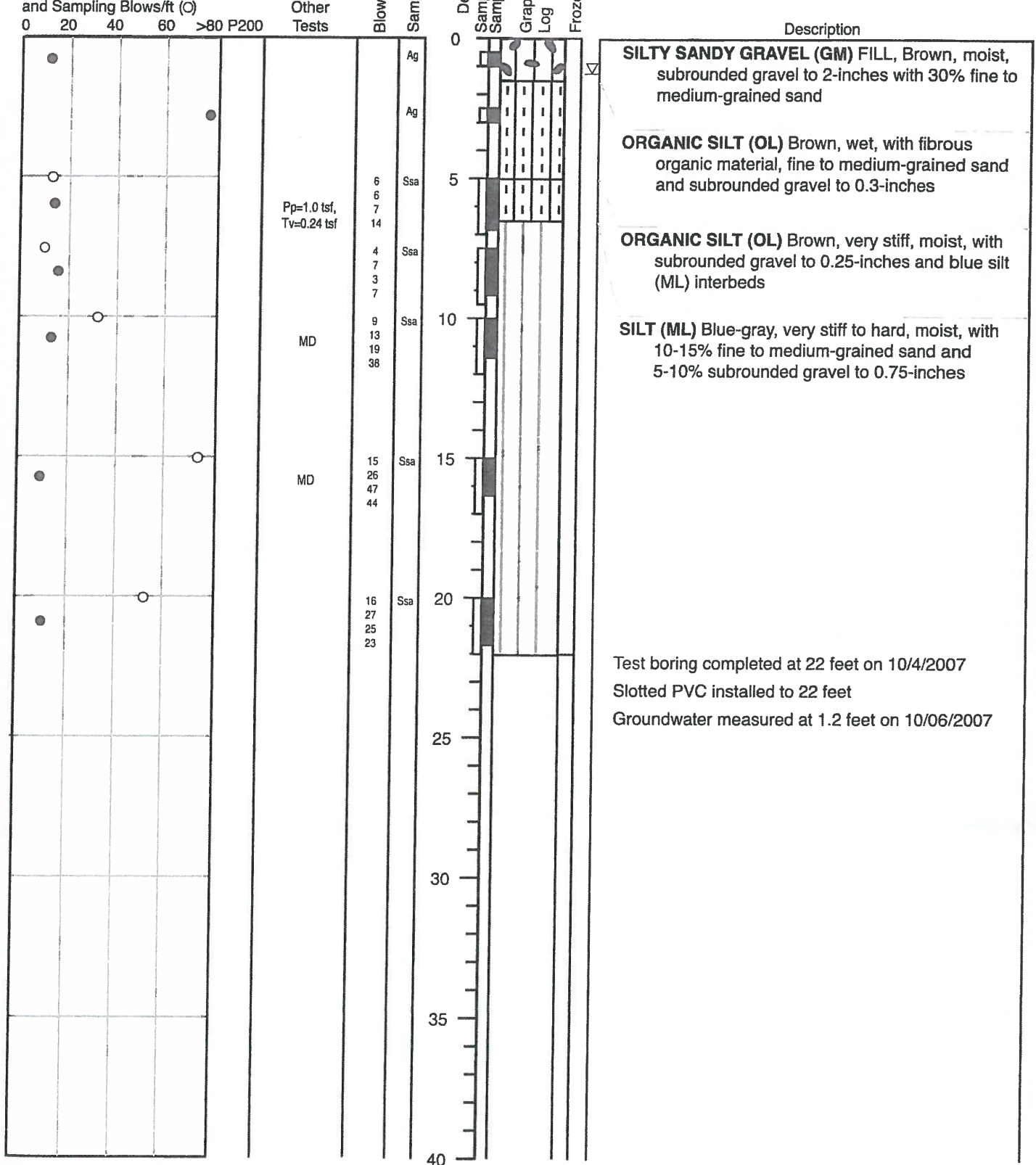
DUANE MILLER ASSOCIATES LLC

Project: Kachemak Dr W & S
 DMA Job No.: 4248.001
 Logged By: N. Luzny

Log of HOLE: DMA-18

Date Drilled: October 4, 2007
 Contractor: Hughes Drilling
 Equipment: CME-75 140lb auto hammer
 GPS Coord.: N59°38'56.5" W151°27'03.9" (WGS 84)
 Elevation*: 92 feet
 Station**: 43+00

Moisture Content % (●),
 PL & LL (—), Salinity (△)
 and Sampling Blows/ft (○)



* Elevations interpolated from an AutoCad drawing dated 6/27/07, Bristol Environmental and Engineering Services Corp.
 ** Station taken from BEESC Water Line Plan and Profile 12/20/07.

DUANE MILLER ASSOCIATES LLC

Project: Kachemak Dr W & S
 DMA Job No.: 4248.001
 Logged By: N. Luzny

Log of HOLE: DMA-19

Date Drilled: October 4, 2007
 Contractor.: Hughes Drilling
 Equipment: CME-75 140lb auto hammer
 GPS Coord.: N59°38'53.4" W151°27'11.1" (WGS 84)
 Elevation*: 92 feet
 Station**: 38+50

Moisture Content % (●),
 PL & LL (—), Salinity (△)
 and Sampling Blows/ft (○)

Other Tests

Blow Counts

Sampler Type

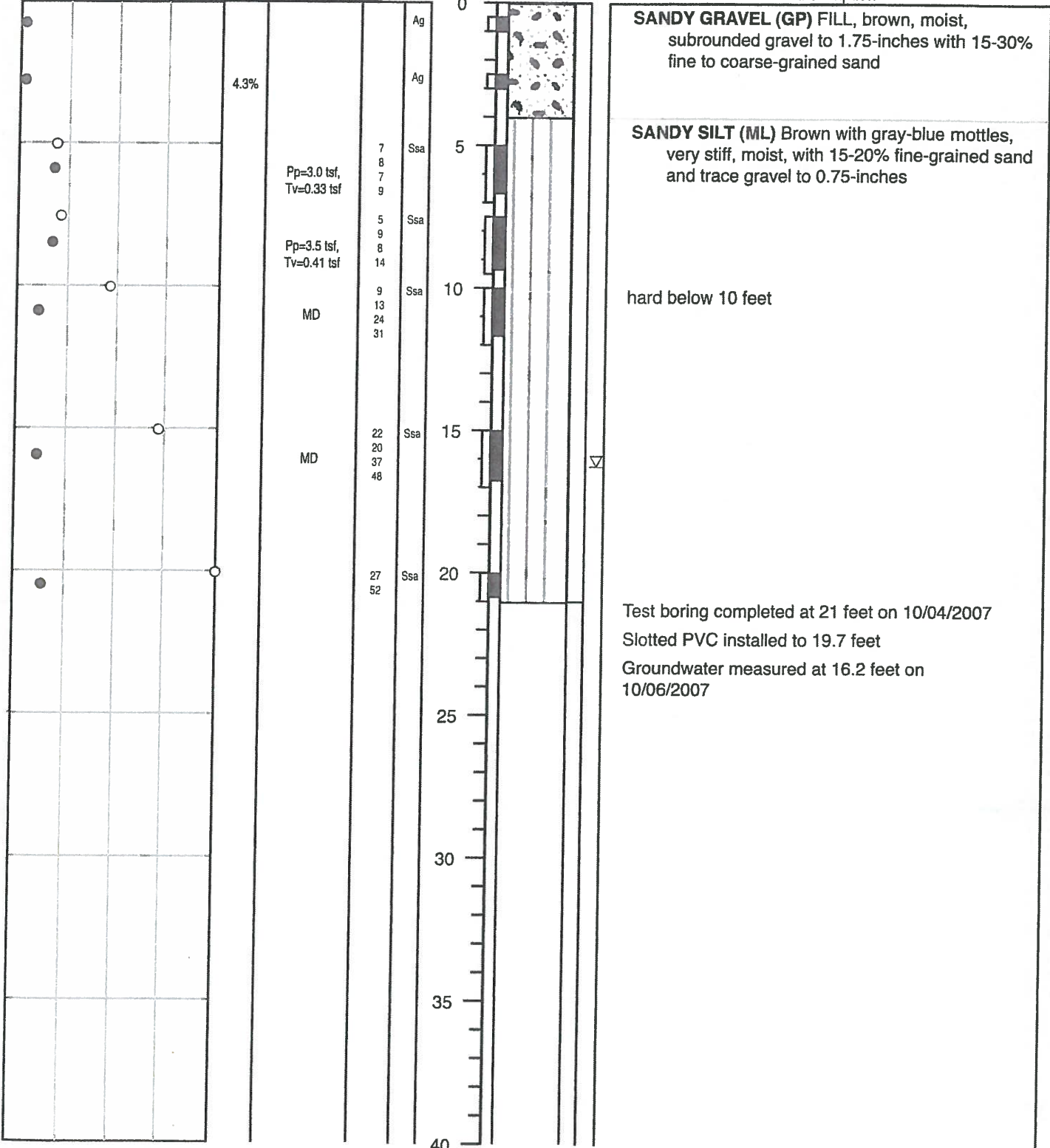
Depth (Feet)

Sampling Interval

Graphic Log

Frozen

Description



* Elevations interpolated from an AutoCad drawing dated 6/27/07, Bristol Environmental and Engineering Services Corp.
 ** Station taken from BEESC Water Line Plan and Profile 12/20/07.



DUANE MILLER ASSOCIATES LLC

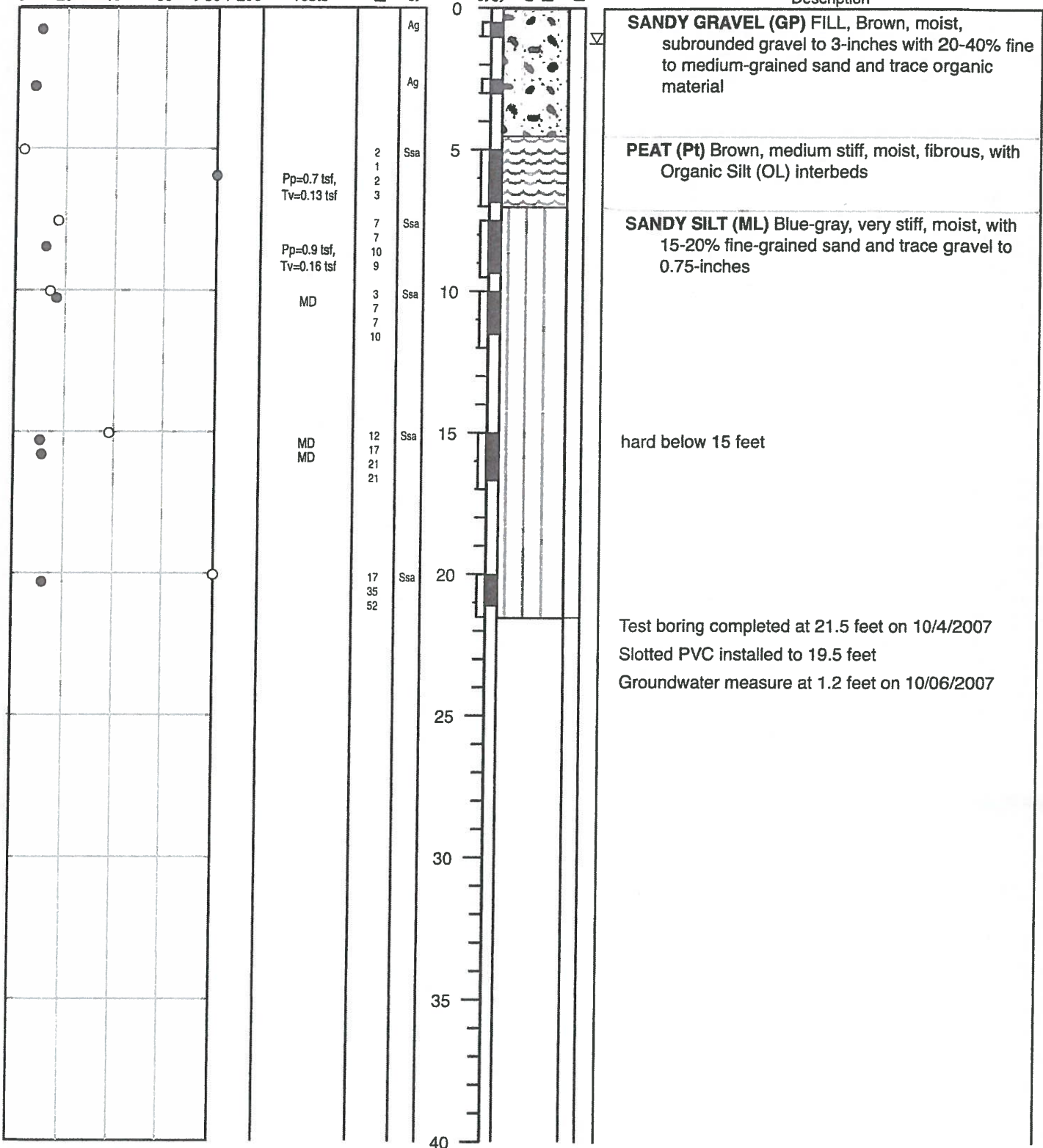
Project: Kachemak Dr W & S
 DMA Job No.: 4248.001
 Logged By: N. Luzny

Moisture Content % (●),
 PL & LL (—), Salinity (△)
 and Sampling Blows/ft (○)

Other Tests

Log of HOLE: DMA-20

Date Drilled: October 4, 2007
 Contractor.: Hughes Drilling
 Equipment: CME-75 140lb auto hammer
 GPS Coord.: N59°38'50.1" W151°27'17.3" (WGS 84)
 Elevation*: 92 feet
 Station**: 34+10



* Elevations interpolated from an AutoCad drawing dated 6/27/07, Bristol Environmental and Engineering Services Corp.
 ** Station taken from BEESC Water Line Plan and Profile 12/20/07.



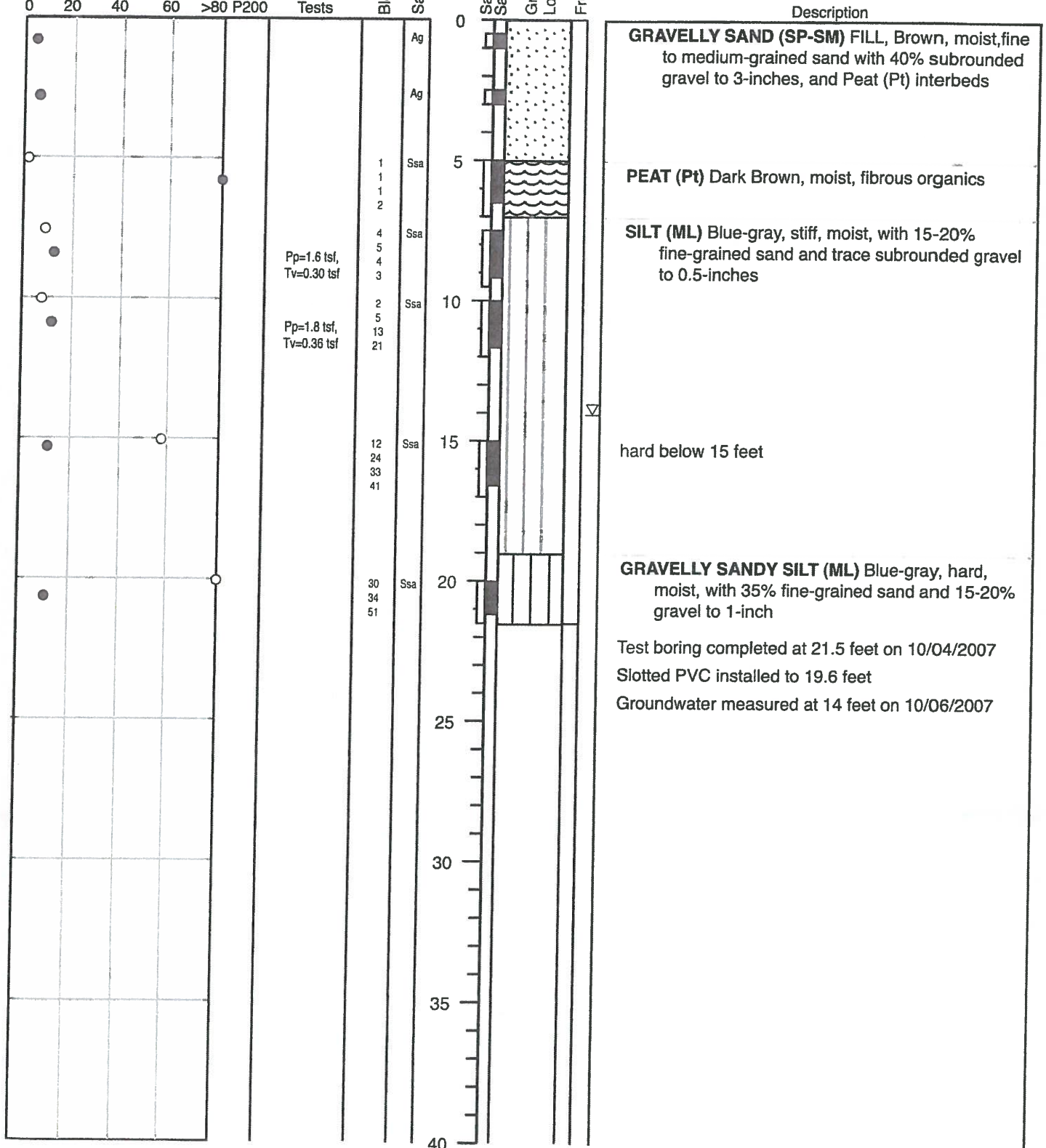
DUANE MILLER ASSOCIATES LLC

Project: Kachemak Dr W & S
 DMA Job No.: 4248.001
 Logged By: N. Luzny

Log of HOLE: DMA-21

Date Drilled: October 4, 2007
 Contractor.: Hughes Drilling
 Equipment: CME-75 140lb auto hammer
 GPS Coord.: N59°38'46.2" W151°27'26.5" (WGS 84)
 Elevation*: 93 feet
 Station**: 27+60

Moisture Content % (●),
 PL & LL (—), Salinity (Δ)
 and Sampling Blows/ft (○)



* Elevations interpolated from an AutoCad drawing dated 6/27/07, Bristol Environmental and Engineering Services Corp.
 ** Station taken from BEESC Water Line Plan and Profile 12/20/07.



DUANE MILLER ASSOCIATES LLC

Project: Kachemak Dr W & S
 DMA Job No.: 4248.001
 Logged By: N. Luzny

Log of HOLE: DMA-22

Date Drilled: October 4, 2007
 Contractor: Hughes Drilling
 Equipment: CME-75 140lb auto hammer
 GPS Coord.: N59°38'43.9" W151°27'36.8" (WGS 84)
 Elevation*: 90 feet
 Station**: 21+80

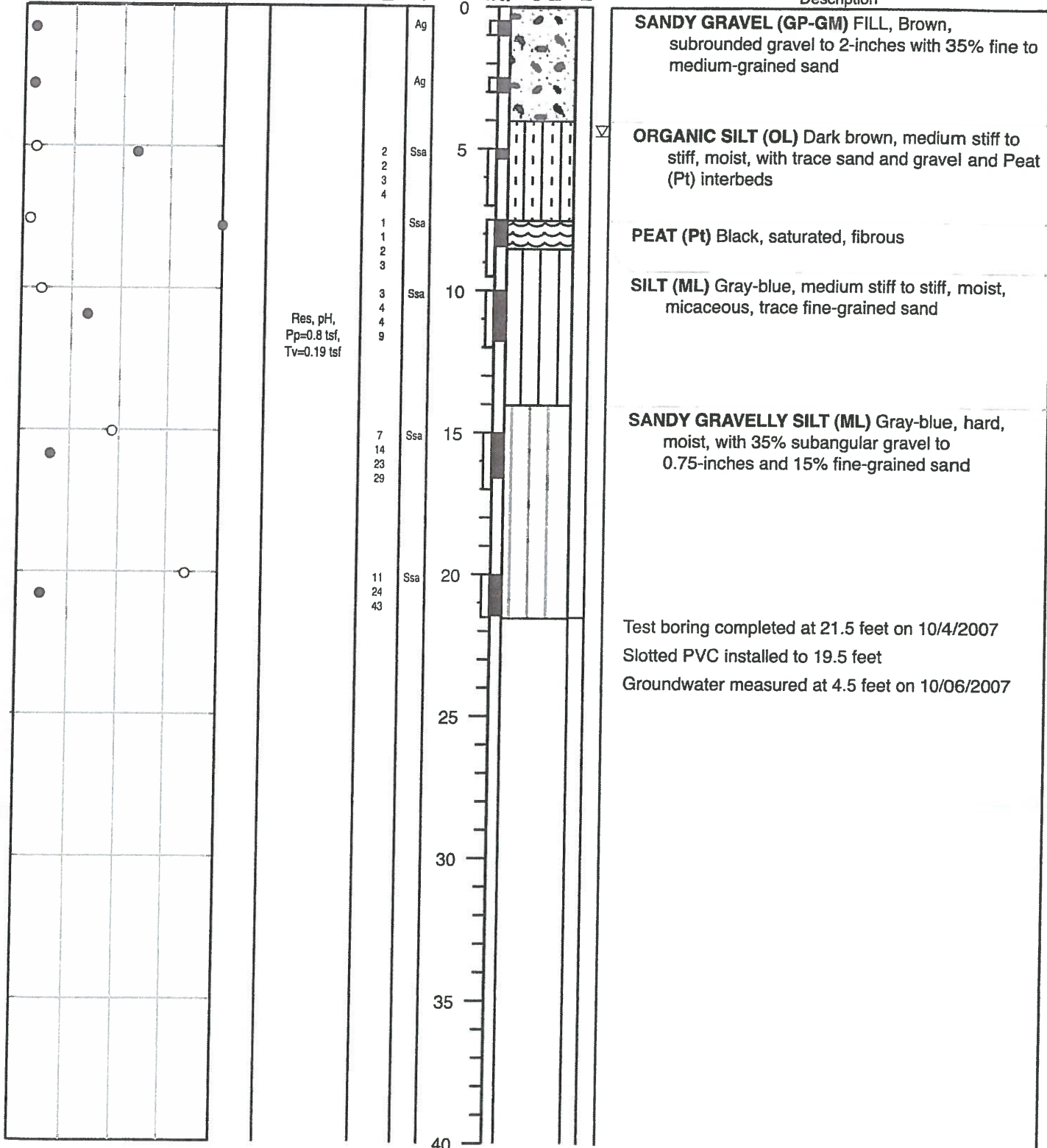
Moisture Content % (●),
 PL & LL (←), Salinity (△)
 and Sampling Blows/ft (○)

Other
 Tests

Blow Counts
 Sampler Type

Depth (Feet)
 Sampling Interval
 Samples
 Graphic
 Log
 Frozen

Description



* Elevations interpolated from an AutoCad drawing dated 6/27/07, Bristol Environmental and Engineering Services Corp.

** Station taken from BEESC Water Line Plan and Profile 12/20/07.



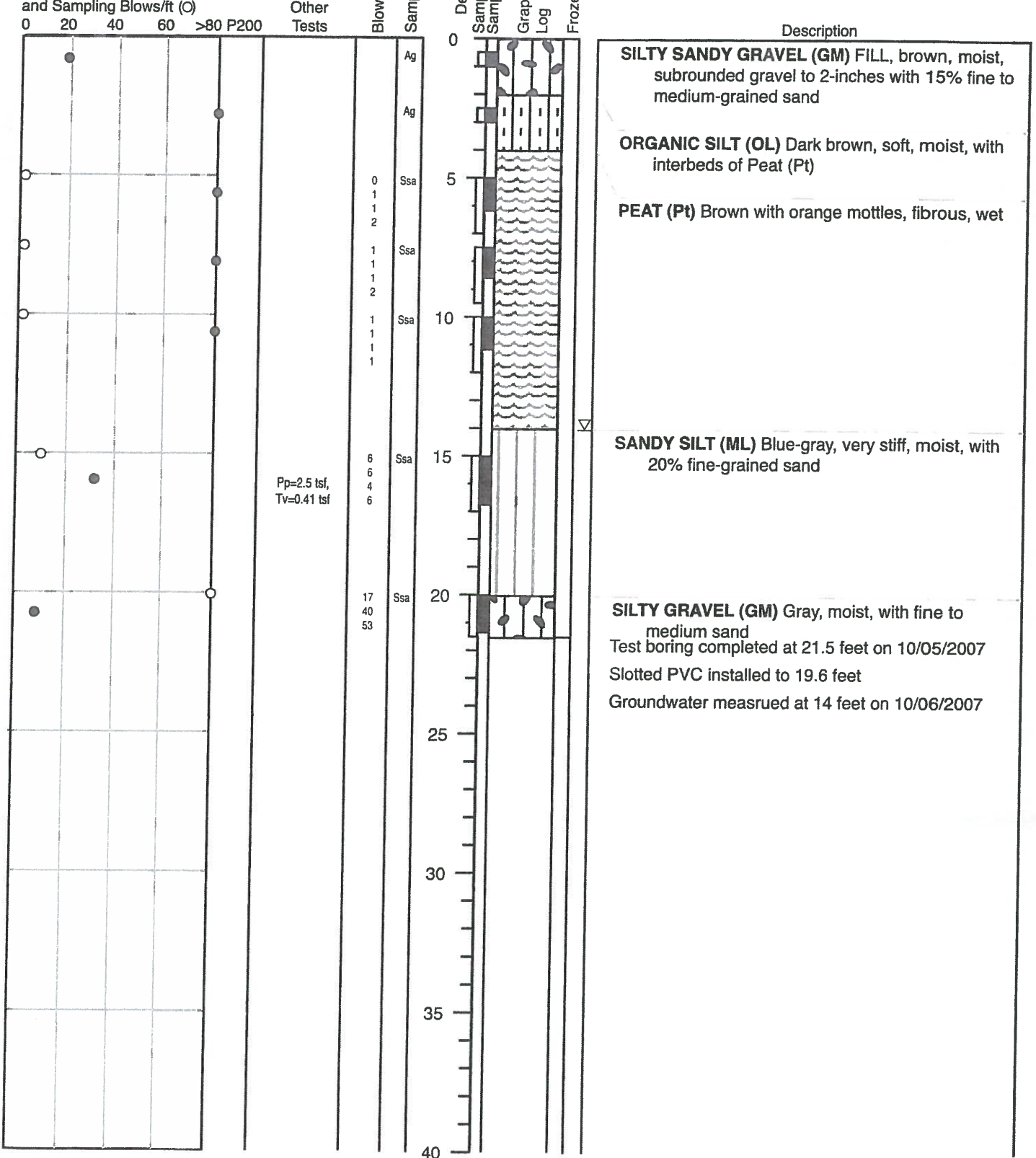
DUANE MILLER ASSOCIATES LLC

Project: Kachemak Dr W & S
 DMA Job No.: 4248.001
 Logged By: N. Luzny

Log of HOLE: DMA-23

Date Drilled: October 5, 2007
 Contractor.: Hughes Drilling
 Equipment: CME-75 140lb auto hammer
 GPS Coord.: N59°38'34.3" W151°28'11.7" (WGS 84)
 Elevation*: 82 feet
 Station**: 1+25

Moisture Content % (●),
 PL & LL (—), Salinity (△)
 and Sampling Blows/ft (○)



* Elevations interpolated from an AutoCad drawing dated 6/27/07, Bristol Environmental and Engineering Services Corp.
 ** Station taken from BEESC Water Line Plan and Profile 12/20/07.

DUANE MILLER ASSOCIATES LLC

Project: Kachemak Dr W & S
 DMA Job No.: 4248.001
 Logged By: N. Luzny

Log of HOLE: DMA-24

Date Drilled: October 5, 2007
 Contractor.: Hughes Drilling
 Equipment: CME-75 140lb auto hammer
 GPS Coord.: N59°38'36.4" W151°28'03.1" (WGS 84)
 Elevation*: 82 feet
 Station**: 6+23

Moisture Content % (●),
 PL & LL (—), Salinity (△)
 and Sampling Blows/ft (○)

Other Tests

Blow Counts

Sampler Type

Depth (Feet)

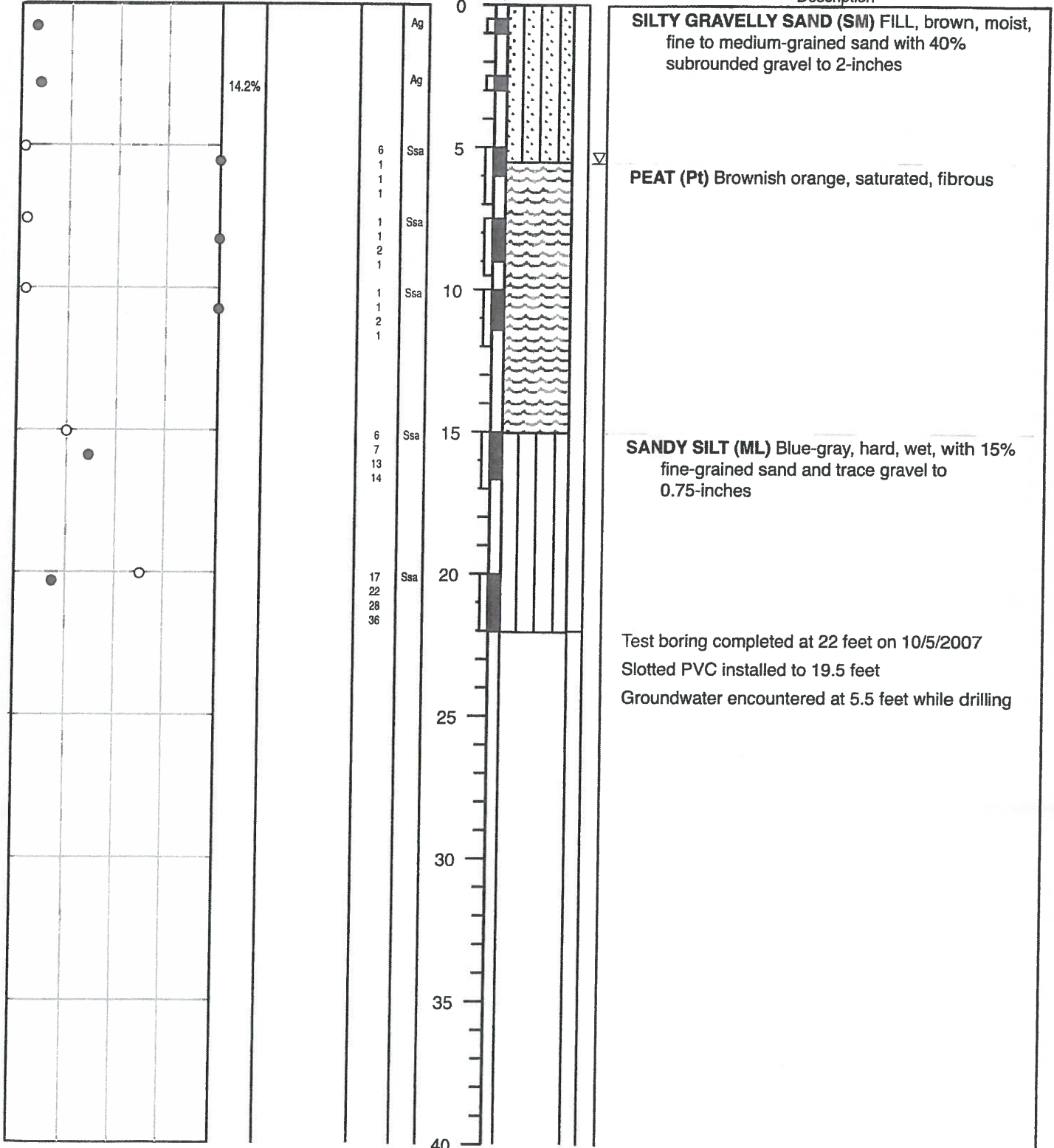
Sampling Interval

Samples

Graphic Log

Frozen

Description



* Elevations interpolated from an AutoCad drawing dated 6/27/07, Bristol Environmental and Engineering Services Corp.

** Station taken from BEESC Water Line Plan and Profile 12/20/07.



DUANE MILLER ASSOCIATES LLC

Project: Kachemak Dr W & S
 DMA Job No.: 4248.001
 Logged By: N. Luzny

Log of HOLE: DMA-25

Date Drilled: October 5, 2007
 Contractor.: Hughes Drilling
 Equipment: CME-75 140lb auto hammer
 GPS Coord.: N59°38'39.1" W151°27'54.8" (WGS 84)
 Elevation*: 84 feet
 Station**: 11+35

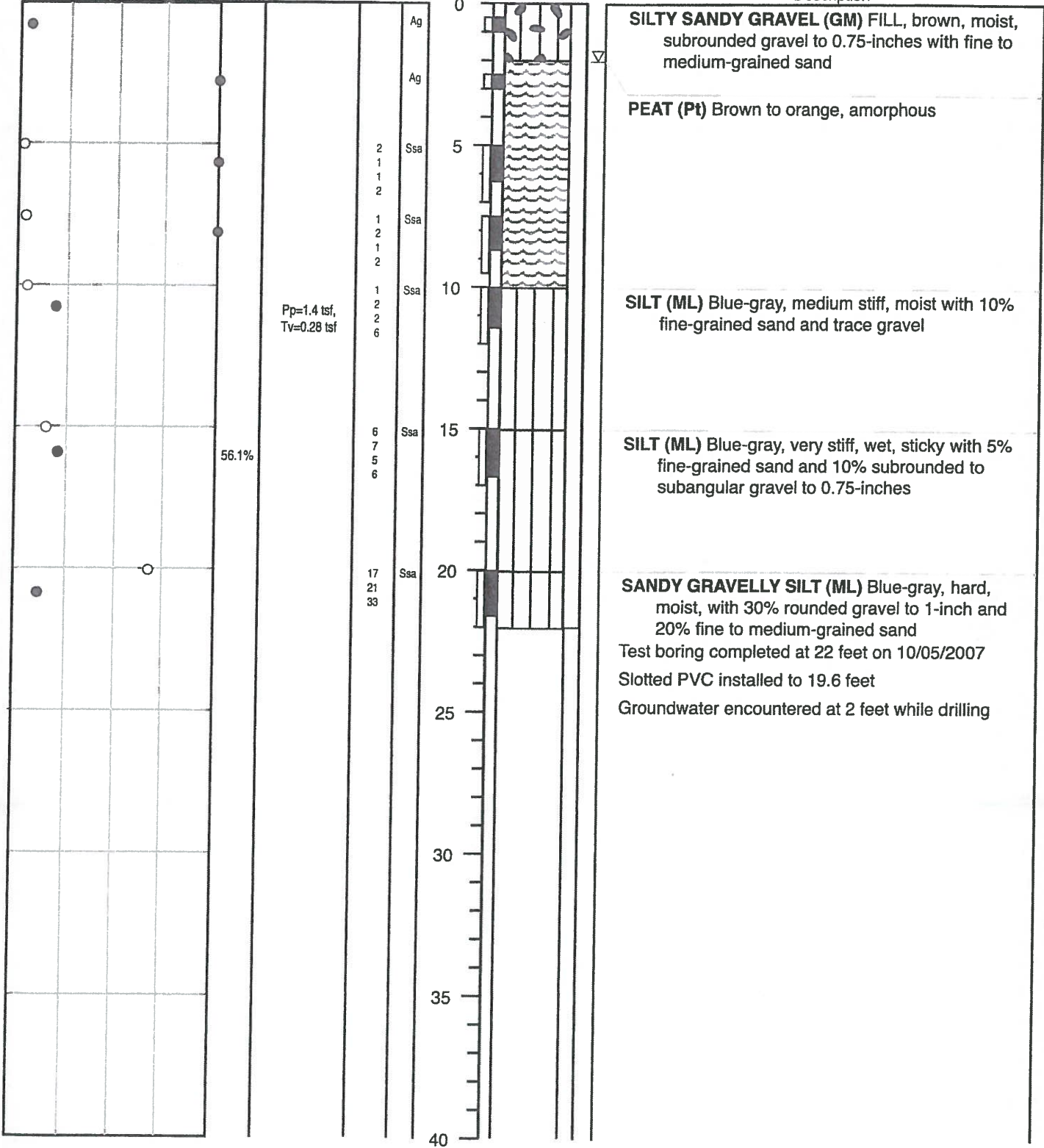
Moisture Content % (●),
 PL & LL (-), Salinity (Δ)
 and Sampling Blows/ft (○)

Other
 Tests

Blow Counts
 Sampler Type

Depth (Feet)
 Sampling Interval
 Samples
 Graphic
 Log
 Frozen

Description



* Elevations interpolated from an AutoCad drawing dated 6/27/07, Bristol Environmental and Engineering Services Corp.
 ** Station taken from BEESC Water Line Plan and Profile 12/20/07.



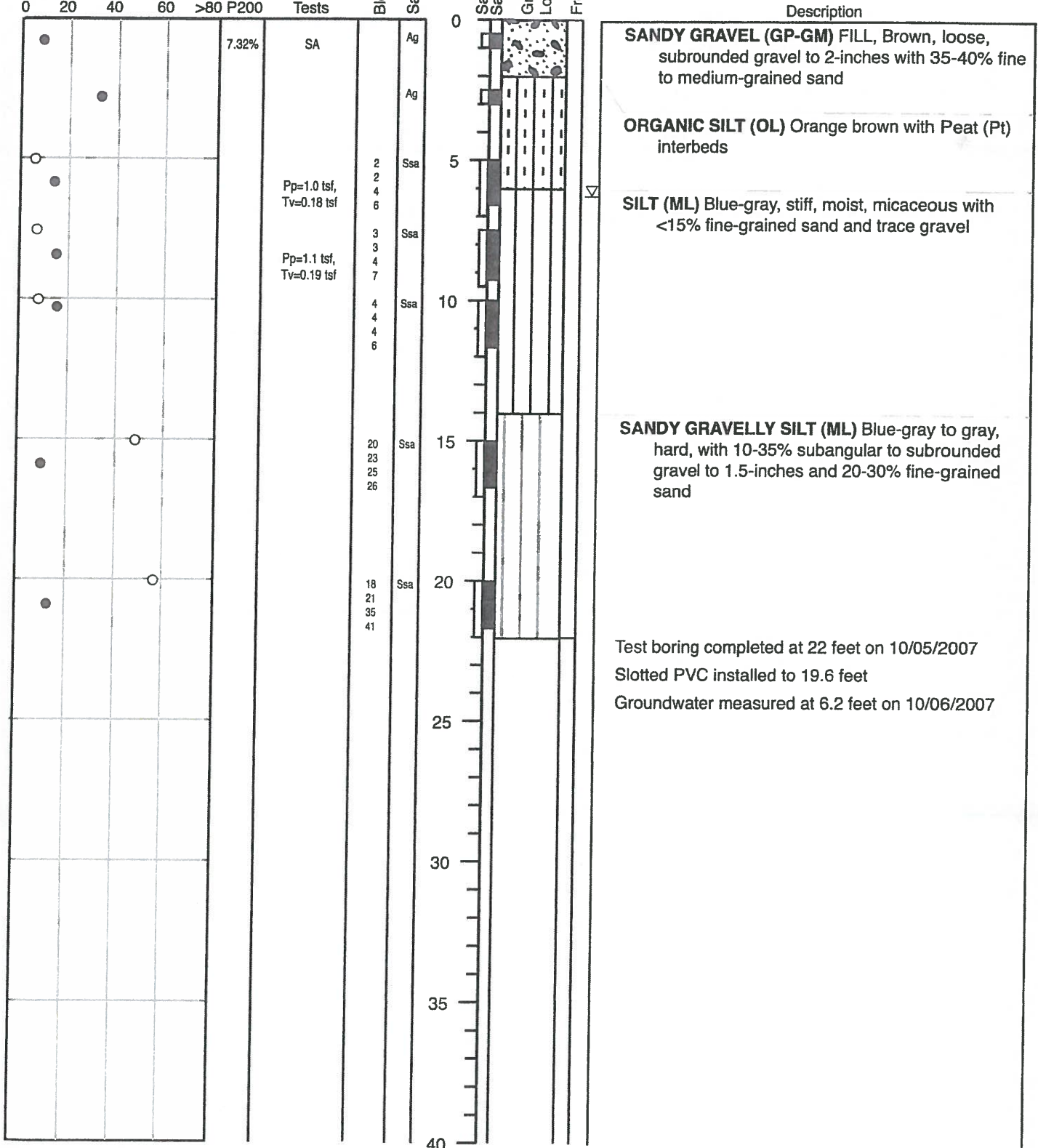
DUANE MILLER ASSOCIATES LLC

Project: Kachemak Dr W & S
 DMA Job No.: 4248.001
 Logged By: N. Luzny

Log of HOLE: DMA-26

Date Drilled: October 5, 2007
 Contractor.: Hughes Drilling
 Equipment: CME-75 140lb auto hammer
 GPS Coord.: N59°38'41.4" W151°27'43.3" (WGS 84)
 Elevation*: 86 feet
 Station**: 17+20

Moisture Content % (●),
 PL & LL (—), Salinity (△)
 and Sampling Blows/ft (○)



* Elevations interpolated from an AutoCad drawing dated 6/27/07, Bristol Environmental and Engineering Services Corp.
 ** Station taken from BEESC Water Line Plan and Profile 12/20/07.

