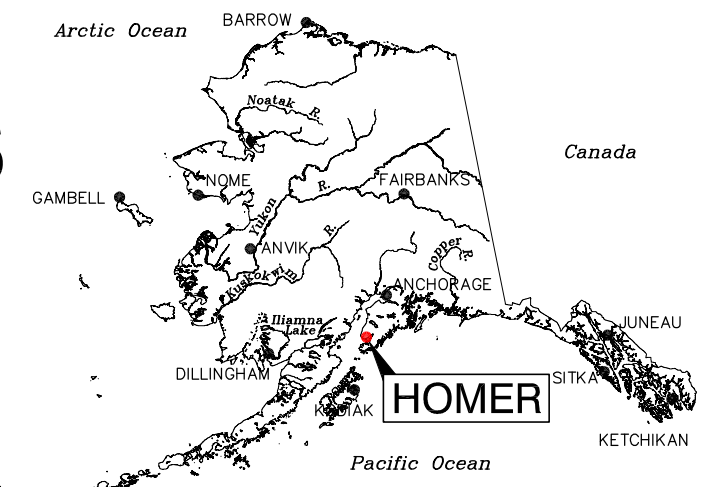
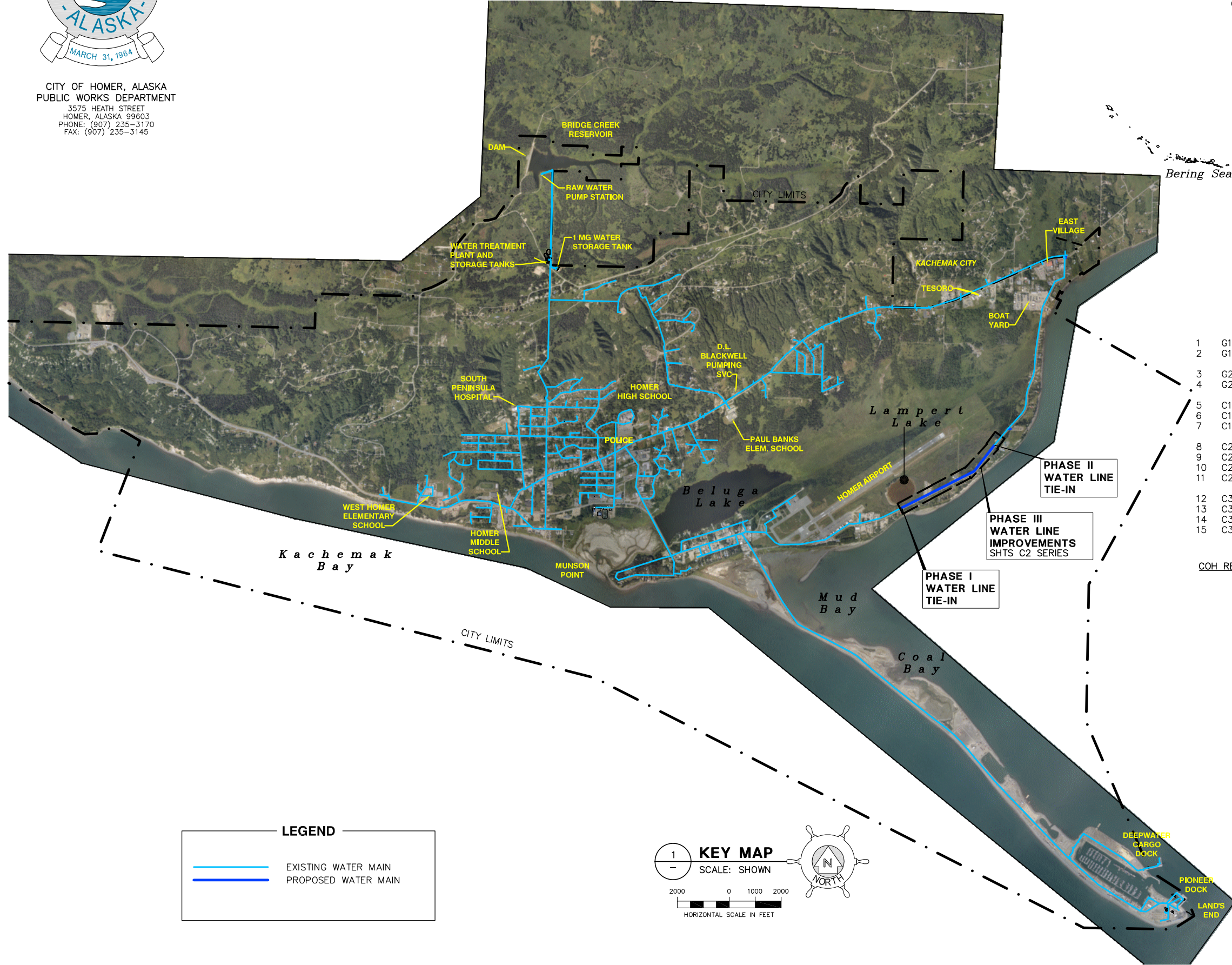


CITY OF HOMER, ALASKA
 PUBLIC WORKS DEPARTMENT
 3575 HEATH STREET
 HOMER, ALASKA 99603
 PHONE: (907) 235-3170
 FAX: (907) 235-3145

KACHEMAK DRIVE PHASE III WATER IMPROVEMENTS



VICINITY MAP
 NTS



SHEET INDEX

- | | |
|--------------|---|
| CIVIL | |
| 1 | G1.0 COVER SHEET, VICINITY MAP, KEY MAP, SHEET INDEX, |
| 2 | G1.1 GENERAL NOTES, ABBREVIATIONS, AND LEGEND |
| 3 | G2.0 SURVEY CONTROL KEY MAP, LEGEND AND TABLES |
| 4 | G2.1 SURVEY CONTROL AND EXISTING EASEMENTS |
| 5 | C1.0 PROJECT KEY MAP |
| 6 | C1.1 WATER EASEMENTS AND TCE PLAN |
| 7 | C1.2 WATER EASEMENTS AND TCE PLAN |
| 8 | C2.0 WATER LINE PLAN & PROFILE STA 1+00.00 TO STA 14+00.00 |
| 9 | C2.1 WATER LINE PLAN & PROFILE STA 14+00.00 TO STA 28+50.00 |
| 10 | C2.2 WATER LINE PLAN & PROFILE STA 28+50.00 TO STA 43+00.00 |
| 11 | C2.3 WATER LINE PLAN & PROFILE STA 43+00.00 TO STA 44+72.5± |
| 12 | C3.0 TYPICAL SECTIONS |
| 13 | C3.1 WATER MAIN DETAILS |
| 14 | C3.2 WATER MAIN DETAILS |
| 15 | C3.3 WATER SERVICE CONNECTION TABLE |

COH RECORD DWG NO	AS-BUILT REFERENCE DRAWINGS
02566	PHASE I WATER EXTENSION PLAN AND PROFILE
03058	PHASE II WATER LINE PLAN & PROFILE

PROJECT SUMMARY

PHASE III IMPROVEMENTS WILL COMPLETE KACHEMAK DR WATER MAIN LOOP
 INSTALL 4,373± LF OF 12" HDPE SDR11 WATER MAIN
 INSTALL 8 FIRE HYDRANTS
 INSTALL 28 WATER SERVICE CONNECTIONS (MAIN TO CURB STOP)

LEGEND

	EXISTING WATER MAIN
	PROPOSED WATER MAIN

KEY MAP
 SCALE: SHOWN

HORIZONTAL SCALE IN FEET

Bristol
 ENGINEERING
 SERVICES CORPORATION
 Phone (907) 563-0013 Fax (907) 563-6713
 Project No. 32130074

User: RBURDICK Aug 01, 2016 1:42pm
 Drawing: K:\JOBS\32130074 TO#01 WS IMP\ACAD-DESIGN\TO#1 KACHEMAK DR PH III\DWG\32130074_G1-1.DWG - Layout: G1.1
 Xrefs: 24047_BASE.DWG 32130074_BORD.DWG - Images: None

GENERAL NOTES

- 1 THE CONTRACTOR SHALL PROVIDE ALL LABOR, EQUIPMENT AND MATERIALS NECESSARY TO COMPLETE THE PROJECT.
- 2 ALL CONSTRUCTION SHALL BE COMPLETED AS OUTLINED IN THE CITY OF HOMER; STANDARD CONSTRUCTION SPECIFICATIONS (2011 EDITION), UNLESS OTHERWISE SHOWN IN THE DRAWINGS OR SPECIAL PROVISIONS.
- 3 ALL CONSTRUCTION WITHIN THE KACHEMAK DRIVE ROAD PRISM SHALL BE DONE IN ACCORDANCE WITH THE STATE OF ALASKA, DEPARTMENT OF TRANSPORTATION AND PUBLIC FACILITIES, STANDARD SPECIFICATIONS FOR HIGHWAY CONSTRUCTION.
- 4 THE WATER LINE SHALL BE A MINIMUM OF 18 VERTICAL INCHES FROM SEWER LINES. HORIZONTAL SEPARATION BETWEEN SANITARY SEWER LINES AND WATER LINES MUST NOT BE LESS THAN 10 FEET UNLESS OTHERWISE NOTED.
- 5 MINIMUM BURY ON WATER MAIN & SERVICE LINES SHALL BE 7 FEET UNLESS OTHERWISE NOTED. ALL WATER & SERVICE LINES BURIED LESS THAN 7 FEET MUST BE INSULATED AS SPECIFIED.
- 6 CONTRACTOR SHALL RESEED ALL DISTURBED AREAS AS REQUESTED BY THE DEPARTMENT OF TRANSPORTATION OR THE CITY OF HOMER, ALASKA.
- 7 THRUST RESTRAINT MUST BE INSTALLED AT EACH WATER MAIN FITTING UNLESS OTHERWISE NOTED.
- 8 BACKFILL WITHIN ADOT&PF ROAD RIGHT-OF-WAY SHALL MEET STATE OF ALASKA DEPARTMENT OF TRANSPORTATION AND PUBLIC FACILITIES SPECIFICATIONS FOR MATERIALS AND COMPACTION REQUIREMENTS.
- 9 EXCAVATION NEAR UTILITY POLES & UTILITY PEDESTALS SHALL BE COORDINATED WITH HOMER ELECTRIC ASSOCIATION (HEA) (907)235-8551 OR (800)478-8551. THE CONTRACTOR IS RESPONSIBLE FOR COSTS ASSOCIATED WITH REQUIRED POLE STABILIZATION.
- 10 CONTRACTOR SHALL RESTORE ALL PRIVATE DRIVEWAYS TO THEIR ORIGINAL CONDITION.
- 11 CONTRACTOR SHALL COORDINATE WITH UTILITY COMPANIES TO VERIFY LOCATIONS BEFORE EXCAVATION.
- 12 UNDERGROUND UTILITY LINES AND SERVICE BOXES SHALL BE PROTECTED AND RELOCATED AS REQUIRED. THE "ALASKA DIG LINE" 1(800)478-3121 WILL PROVIDE TELEPHONE NUMBERS TO SUCH UTILITY COMPANIES AS ACS, GCI, AND HEA.
- 13 CLEARING & GRUBBING: CLEARING LIMITS SHALL NOT EXCEED 10' HORIZONTALLY EITHER SIDE OF NEW WATER PIPE LOCATIONS, UNLESS OTHERWISE INSTRUCTED BY THE ENGINEER.
- 14 EXISTING SIGNS, MAILBOXES, & FENCING SHALL TEMPORARILY BE RELOCATED DURING CONSTRUCTION. THE CONTRACTOR SHALL RESTORE THESE ITEMS TO THEIR ORIGINAL CONDITION, UPON PROJECT COMPLETION.
- 15 CONTRACTOR SHALL REMOVE & RESTORE EXISTING CULVERTS OBSTRUCTING CONSTRUCTION. CONTRACTOR SHALL BE RESPONSIBLE FOR REPLACING CULVERT(S), IF DAMAGED.
- 16 TRENCH DE-WATERING PER COH STANDARD SPEC EARTHWORK DIVISION 200, 207.3, B, SHALL BE THE RESPONSIBILITY OF THE CONTRACTOR, AND IS INCIDENTAL TO PIPE INSTALLATION.
- 17 ALL WATER SYSTEM COMPONENTS IN DIRECT CONTACT WITH THE POTABLE WATER SUPPLY SHALL MEET THE REQUIREMENTS OF NATIONAL SANITATION FOUNDATION (NSF) STANDARDS 61.
- 18 WATERLINE DISINFECTING CHLORINE FOR DISINFECTION PER COH STANDARD SPEC WATER SYSTEMS DIVISION 600, 602.4.C. DISINFECTION SHALL MEET THE REQUIREMENTS OF ANSI/AWWA B300. WORKERS SHALL USE DUE CARE AND CAUTION TO PREVENT BODILY CONTACT WITH THE CHLORINE MATERIALS OR SOLUTION. FOLLOW ALL SAFETY PRECAUTIONS NOTED IN THE MANUFACTURER'S PRODUCT INFORMATION AND MATERIAL SAFETY DATA SHEET.
- 19 ALL POTABLE WATER PIPELINES, INCLUDING SERVICE LINES, SHALL BE DISINFECTED IN ACCORDANCE WITH THE REQUIREMENTS OF ANSI/AWWA C651.
- 20 ANY PRIVATE OR PUBLIC PROPERTY DISTURBED AS A RESULT OF THIS PROJECT SHALL BE REPLACED TO ORIGINAL CONDITION. EXISTING DRAINAGE PATTERNS SHALL BE RESTORED BY THE CONTRACTOR AFTER CONSTRUCTION OF THE IMPROVEMENTS.

ABBREVIATIONS

AC ASPHALT CEMENT	S SLOPE
AP ARCTIC PIPE	SCH SCHEDULE
ARV AIR RELEASE VALVE	SD STORM DRAIN
AVE AVENUE	SEC SECTION
	SHT SHEET
BF BLIND FLANGE	SS STAINLESS STEEL
BOH BOTTOM OF HOLE	SSCO SANITARY SEWER CLEANOUT
BOP BEGINNING OF PROJECT	SSIV SANITARY SEWER ISOLATION VALVE
	SSMH SANITARY SEWER MANHOLE
CI CAST IRON	STA STATION
CIR CIRCLE	SVC SERVICE
CMP CORRUGATED METAL PIPE	ST STREET
COH CITY OF HOMER	
CONT CONTINUED	TBM TEMPORARY BENCHMARK
CP CONTROL POINT	TCE TEMPORARY CONSTRUCTION EASEMENT
CT COURT	TH TEST HOLE
Cu COPPER	THD THREAD
	TYP TYPICAL
DR DRIVE	VB VALVE BOX
DI DUCTILE IRON	VBM VALVE BOX MARKER
EA EACH	W/ WITH
EL ELEVATION	WTP WATER TREATMENT PLANT
ESMNT EASEMENT	
FCA FLANGE COUPLING ADAPTER	
FF FINISH FLOOR	
FH FIRE HYDRANT	
FM FORCE MAIN	
FL FLANGE	
GV GATE VALVE	
HDPE HIGH-DENSITY POLYETHYLENE	
HYD HYDRANT	
INV INVERT	
IP IRON PIPE	
IPS IRON PIPE SIZE	
IV ISOLATION VALVE	
KB KEY BOX	
L LENGTH	
LF LINEAL FEET	
LN LANE	
LPFM LOW PRESSURE FORCE MAIN	
LT LEFT	
MAX MAXIMUM	
MD MAXIMUM DENSITY	
MG MILLION GALLON	
MH MANHOLE	
MIN MINIMUM	
MNFR MANUFACTURER	
NFS NON FROST SUSCEPTIBLE	
NIC NOT IN CONTRACT	
NTS NOT TO SCALE	
NPT NATIONAL PIPE THREAD	
PC POINT OF CURVATURE	
PE PLAIN END	
PI POINT OF INTERSECTION	
PL PLACE	
P/L PROPERTY LINE	
PRV PRESSURE REDUCING VAULT	
PT POINT OF TANGENCY	
PVC POLYVINYL CHLORIDE	
R RADIUS	
RED REDUCER	
RD ROAD	
ROW RIGHT OF WAY	
RT RIGHT	

LEGEND

PROPOSED	EXISTING	
---	-UG/T-	UNDERGROUND TELEPHONE
---	-OH/E-	OVERHEAD ELECTRIC
---	-UG/E-	UNDERGROUND ELECTRIC
---	-UG/C-	UNDERGROUND CABLE
○	○	POWER POLE
△	△	GUY ANCHOR
⊠	⊠	ELECTRIC PEDESTAL
⊕	⊕	TELEPHONE PEDESTAL
⊛	⊛	LIGHT POLE
○R-7	○R-7	RECOVERED CORNER
---	---	PROPERTY LINE
---	---	EASEMENT
⊕CP-8	⊕CP-8	SURVEY CONTROL POINT
⊕DMA-15	⊕DMA-15	TEST HOLE LOCATION
---	---	SIGN
---	---	CULVERT
xFF=82.7	xFF=82.7	BUILDING FINISH FLOOR ELEVATION
---	---	EDGE OF PAVEMENT
---	---	EDGE OF GRAVEL SURFACE
---	---	GUARD RAIL
C2	C2	CURVE DATA
L2	L2	LINE DATA
⊙	⊙	STORMDRAIN MANHOLE
G	G	GAS LINE
SD	SD	STORMDRAIN LINE
S	S	SANITARY SEWER LINE*
W	W	WATER LINE
S	FM	SANITARY SEWER FORCEMAIN LINE
S	LPFM	SANITARY SEWER LOW PRESSURE FORCEMAIN LINE
○	○	SANITARY SEWER MANHOLE
⊗	⊗	VALVE
]]	CAP
●	●	HYDRANT
⊕	⊕	PRESSURE REDUCING VAULT
⊕	⊕	AIR RELEASE VALVE
⊕	⊕	LIFT STATION
⊕	⊕	SANITARY SEWER CLEANOUT
▼	▼	GRAVITY SANITARY SEWER SERVICE LOCATION
⊕	⊕	LOW PRESSURE SANITARY SEWER SERVICE LOCATION*
⊕	⊕	WATER SERVICE LOCATION
⊕	⊕	DESIGNATED WETLAND

*PROPOSED FOR PHASE III WATER IMPROVEMENT PROJECT

REVISIONS				
NO.	DATE	BY	DESCRIPTION	

Project No. 32130074

Bristol
 ENGINEERING SERVICES CORPORATION
 Phone (907) 563-0013 Fax (907) 563-6713

CITY OF HOMER, ALASKA
 PUBLIC WORKS DEPARTMENT
 3575 HEATH STREET
 HOMER, ALASKA 99603
 PHONE: (907) 235-3170
 FAX: (907) 235-3145

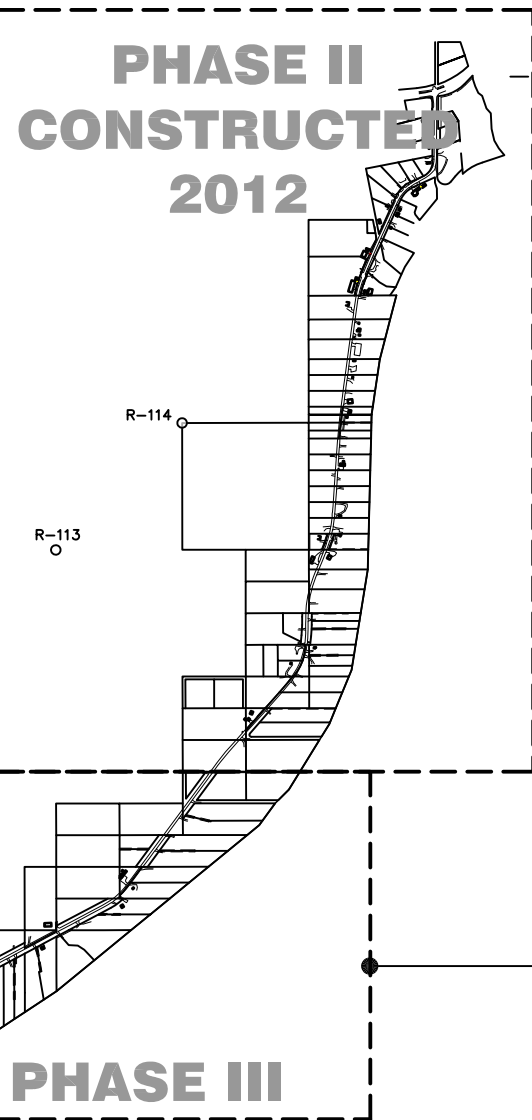
STATE OF ALASKA
 49TH
 KYLE LINDEN PETERSEN
 No. CE-11250
 8/01/16
 REGISTERED PROFESSIONAL ENGINEER

CITY OF HOMER - KACHEMAK DRIVE
 PHASE III WATER IMPROVEMENTS
GENERAL NOTES, ABBREVIATIONS, AND LEGEND

SCALE: SHOWN DESIGNED: SJW CHECKED: KLP DRAWN: SJW DATE: 8/01/16

SHEET NO.
G1.1
 SHEET 2 OF 15

User: RBURDICK Aug 01, 2016 1:43pm
 Drawing: K:\JOBS\32130074 TO#01 WS IMP\ACAD-DESIGN\TO#1 KACHEMAK DR PH III\DWG\32130074_G2_0.DWG - Layout: G2.0
 Xrefs: 32130074_BORD.DWG - Images: None



KEY MAP
 SCALE: SHOWN

- LEGEND**
- R-113 ○ RECOVERED MONUMENT
 - CP-4 ● CONTROL POINT
 - ▨ EXIST PLATTED R.O.W.

NOTE:
 GOLDEN CROWNED SUBDIVISION RECORDED
 9-19-2011 (HRD 2011-36) IS INCLUDED ON THIS
 DRAWING FOR PROJECT CONSISTANCY. IT IS NOT
 SURVEY DATA.

RECOVERED CORNERS

NAME	NORTHING	EASTING	DESCRIPTION
R-1	101,204.991	103,454.897	U.S. CADASTRAL C1/4 SEC. 22 1952
R-2	101,164.994	103,454.772	REBAR W/ALCAP 5780-S 2004
R-3	101,051.687	103,455.174	5/8"REBAR
R-4	101,098.349	103,542.530	REBAR W/SURCAP 3686-S
R-5	101,164.996	103,666.167	REBAR W/SURCAP 3686-S
R-6	101,149.761	103,855.073	1/2"ALUM. SOLID ROD
R-7	101,631.458	104,153.794	1"STEEL ROD
R-8	101,561.729	104,773.783	REBAR W/ALCAP 7610-S 2003
R-9	101,757.546	104,773.176	2"IRONPIPE W/CONCRETE
R-10	101,866.374	104,773.129	REBAR W/SURCAP 3686-S
R-11	101,740.053	104,824.059	REBAR W/SURCAP 3686-S
R-12	101,779.123	104,861.639	REBAR W/SURCAP 3686-S
R-13	101,810.913	104,872.856	REBAR W/SURCAP 3686-S
R-14	101,866.937	104,977.440	REBAR W/SURCAP 3686-S
R-15	101,866.645	105,103.122	1"IRONPIPE WITH PLASTIC CAP
R-16	101,928.437	105,102.921	1/2"REBAR
R-17	102,046.949	105,102.776	5/8"REBAR
R-18	102,527.624	105,102.123	1"IRONPIPE WITH PLASTIC CAP
R-19	102,527.459	104,772.083	U.S. CADASTRAL NE1/16 SEC. 22 1952
R-20	102,109.611	105,432.920	REBAR W/SURCAP 3686-S
R-21	102,223.027	105,432.670	REBAR W/SURCAP 3686-S
R-22	102,168.692	105,543.254	REBAR W/SURCAP 3686-S
R-23	102,227.373	105,653.375	REBAR W/SURCAP 3686-S
R-24	102,353.234	105,887.973	1/2"IRONPIPE
R-25	102,099.694	106,093.406	U.S. CADASTRAL W.C.M.C. SEC. 22/23 1952
R-26	102,462.061	106,092.708	1/2"REBAR
R-27	102,528.982	106,092.109	D.O.T. N1/16 SEC. 22/23 7610-S 2001
R-28	102,557.666	106,059.572	REBAR W/ALCAP 3686-S 198?
R-29	102,528.721	106,219.299	5/8"REBAR
R-30	102,858.642	106,124.747	REBAR (BENT) W/ALCAP ???-S
R-31	102,759.792	106,657.791	1/2"REBAR
R-32	102,859.232	106,629.431	REBAR W/ALCAP 3686-S 1985
R-33	102,529.384	106,594.168	3-1/4"ALCAP MON7614-S 1997
R-34	102,952.014	106,843.604	REBAR W/ALCAP 7610-S 2000
R-35	103,189.285	107,042.464	1/2"REBAR
R-36	103,374.374	107,054.551	1/2"REBAR
R-37	103,849.890	107,409.219	REBAR W/ALCAP 1301-S 1986
R-38	103,848.798	106,089.559	GLO COR. SECS. 14/15/22/23 1917
R-39	103,846.015	107,509.295	REBAR W/ALCAP (BENT) 1301-S 1986
R-40	103,850.167	107,956.103	GLO W.C.M.C. SEC. 14/23 1917
R-41	104,180.185	107,409.077	5/8"REBAR
R-42	104,180.254	107,773.321	REBAR W/ALCAP 7968-S 2000
R-108	101,757.857	104,870.597	REBAR W/SURCAP 3686-S
R-109	102,694.185	106,532.102	REBAR W/SURCAP 3686-S
R-110	103,024.282	106,897.014	REBAR W/ALCAP 7610-S 2000

PROJECT CONTROL

NAME	NORTHING	EASTING	ELEV.	DESCRIPTION
CP-9	102,828.1648	106,684.2254	95.49	2"ALCAP ON5/8"REBAR
CP-10	101,976.4392	105,033.7227	85.95	2"ALCAP ON5/8"REBAR

LINE TABLE

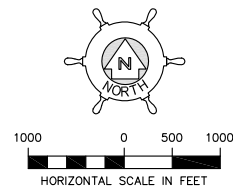
LINE	BEARING	DISTANCE
L1	S 23°05'33"E	23.00'
L2	N23°05'33"W	51.79'

SURVEY NOTES

- SURVEY WAS PERFORMED BY:
 SEABRIGHT DESIGN GROUP,
 STEVE SMITH, RLS
 1044 EAST END ROAD, SUITE A
 HOMER, AK. 99603
1. BASIS OF BEARING FOR THIS SURVEY IS FROM GPS STATIC OBSERVATIONS TAKEN ON THE PROJECT CONTROL POINTS. NAD83 ALASKA STATE PLANE GRID COORDINATES OBTAINED FROM THE GPS OBSERVATIONS WERE BASED ON THE NGS PUBLISHED VALUES FOR USC&GS TRISTATION "HOMAIR".
 2. TRUE BEARINGS AND DISTANCES WERE DETERMINED BY ROTATING AND SCALING FROM GRID USING USC&GS TRISTATION "HOMAIR" AS A SCALING POINT. TRUE BEARINGS WERE DETERMINED BY ROTATING GRID INVERSE AZIMUTHS -1°17'13". TRUE DISTANCES WERE OBTAINED BY DIVIDING GRID INVERSE DISTANCES BY 0.999986696.
 3. TRUE COORDINATE VALUES WERE TRANSLATED TO A LOCAL COORDINATE SYSTEM BASED ON=100,000 E=100,000 AT USC&GS TRISTATION "HOMAIR".
 4. BASIS OF VERTICAL CONTROL FOR THIS SURVEY IS THE NGS PUBLISHED VALUE FOR USC&GS TRISTATION "HOMAIR". THE NAVD 88 ELEVATION FOR "HOMAIR" IS 70.522 FEET. THE GEOID HEIGHTS FOR THE PROJECT CONTROL POINTS WERE DETERMINED BY GEOID99.

SHEET G2.1

REVISIONS				
NO.	DATE	BY	DESCRIPTION	



Project No. 32130074

Bristol
 ENGINEERING SERVICES CORPORATION
 Phone (907) 563-0013 Fax (907) 563-6713

CITY OF HOMER, ALASKA
 PUBLIC WORKS DEPARTMENT
 3575 HEATH STREET
 HOMER, ALASKA 99603
 PHONE: (907) 235-3170
 FAX: (907) 235-3145

STATE OF ALASKA
 49th
 KYLE LINDEN PETERSEN
 No. CE-11250
 8/01/16
 REGISTERED PROFESSIONAL ENGINEER

CITY OF HOMER - KACHEMAK DRIVE
 PHASE III WATER IMPROVEMENTS

**SURVEY CONTROL
 KEY MAP, LEGEND, AND TABLES**

SCALE: SHOWN DESIGNED:SJW CHECKED: KLP DRAWN:SJW DATE: 8/01/16

SHEET NO.
G2.0
 SHEET 3 OF 15

User: RBURDICK Aug 01, 2016 -- 1:39pm
 Drawing: K:\JOBS\32130074 TO#01 WS IMP\ACAD-DESIGN\TO#1 KACHEMAK DR PH III\DWG\32130074_G2_1-G2_2.DWG - Layout: G2.1
 Xrefs: 32130074_BORD.DWG - Images: HOMER_100MB_NAD83.TIF

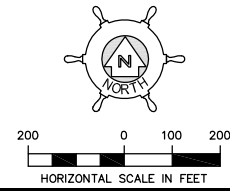


LEGEND (THIS SHEET)

EXISTING PLATTED ROW

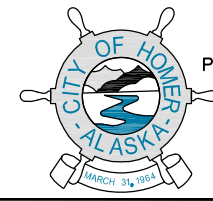
REVISIONS

NO.	DATE	BY	DESCRIPTION



Project No. 32130074

Bristol
 ENGINEERING SERVICES CORPORATION
 Phone (907) 563-0013 Fax (907) 563-6713



CITY OF HOMER, ALASKA
 PUBLIC WORKS DEPARTMENT
 3575 HEATH STREET
 HOMER, ALASKA 99603
 PHONE: (907) 235-3170
 FAX: (907) 235-3145

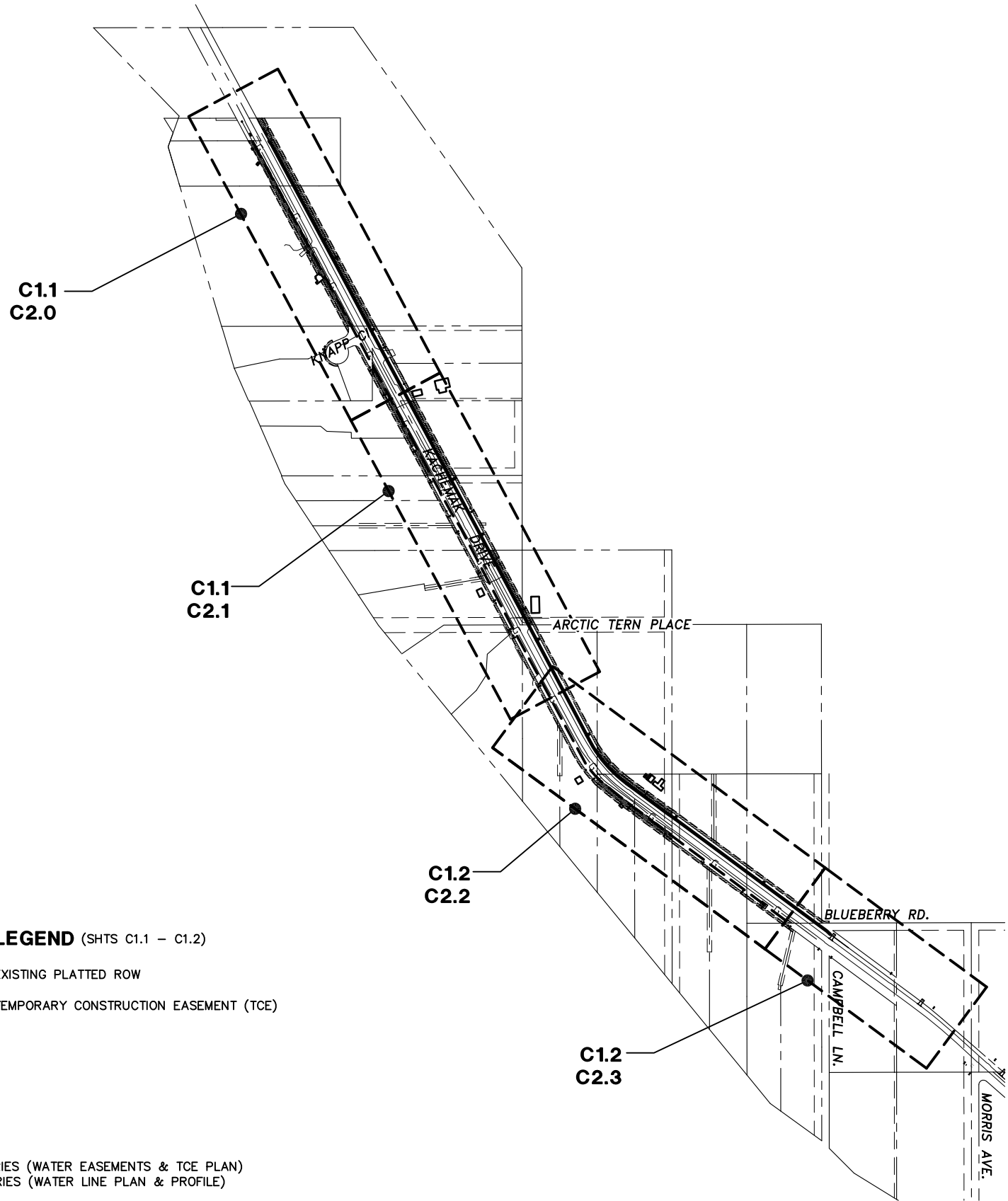


CITY OF HOMER - KACHEMAK DRIVE
 PHASE III WATER IMPROVEMENTS
SURVEY CONTROL AND EXISTING EASEMENTS

SCALE: SHOWN DESIGNED: SJW CHECKED: KLP DRAWN: SJW DATE: 8/01/16

SHEET NO.	G2.1
SHEET	4 OF 15

User: RBURDICK Aug 01, 2016 1:33pm
 Drawing: C:\USERS\RBURDICK\APPDATA\LOCAL\TEMP\ACPUBLISH_6480\32130074_C1_0.DWG - Layout: C1.0
 Xrefs: (DIESEL_evaluation failed) - Images: HOMER_100MB_NAD83.TIF PHASEIII.JPG



LEGEND (SHTS C1.1 - C1.2)

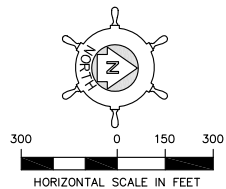
- EXISTING PLATTED ROW
- TEMPORARY CONSTRUCTION EASEMENT (TCE)

NOTES

SHEET C1 SERIES (WATER EASEMENTS & TCE PLAN)
 SHEET C2 SERIES (WATER LINE PLAN & PROFILE)

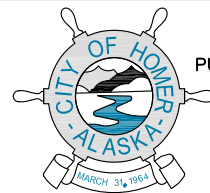
REVISIONS

NO.	DATE	BY	DESCRIPTION

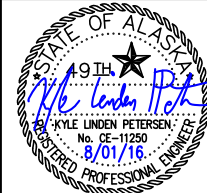


Project No. 32130074

Bristol
 ENGINEERING SERVICES CORPORATION
 Phone (907) 563-0013 Fax (907) 563-6713



CITY OF HOMER, ALASKA
 PUBLIC WORKS DEPARTMENT
 3575 HEATH STREET
 HOMER, ALASKA 99603
 PHONE: (907) 235-3170
 FAX: (907) 235-3145



CITY OF HOMER - KACHEMAK DRIVE
 PHASE III WATER IMPROVEMENTS

PROJECT KEY MAP

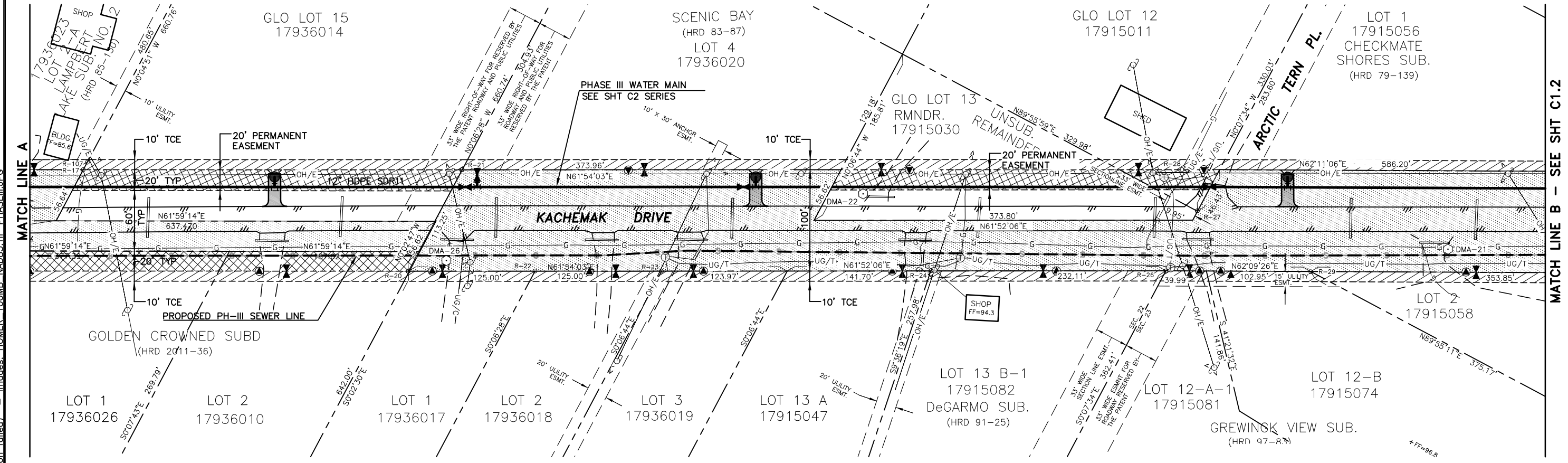
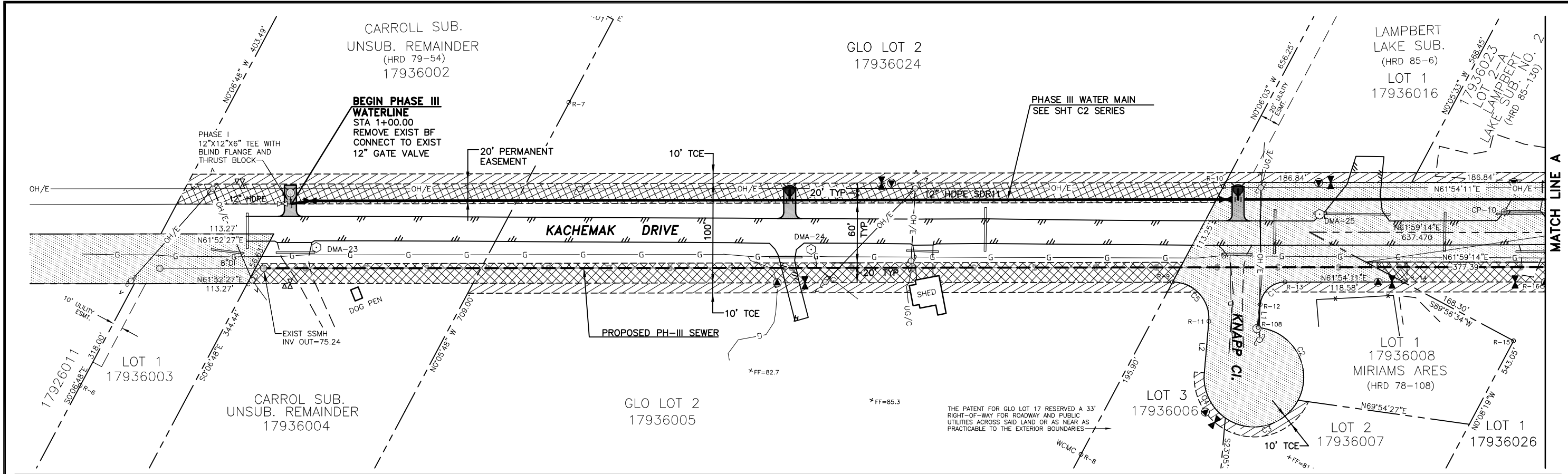
SHEET NO.

C1.0

SCALE: SHOWN DESIGNED: SJW CHECKED: KLP DRAWN: SJW DATE: 8/01/16

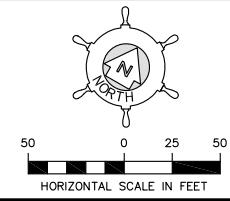
SHEET **5** OF **15**

User: RBUICK Aug 01, 2016 - 1:33pm
 Drawing: C:\USERS\RBUICK\APPDATA\LOCAL\TEMP\AC\PUBLISH_6480\32130074_C1_1-C1_3.DWG - Layout: C1.1
 Xrefs: (DIESEL evaluation failed) - Images: HOMER_100MB_NAD83.TIF PHASEIII.JPG



REVISIONS

NO.	DATE	BY	DESCRIPTION



Project No. 32130074

Bristol

ENGINEERING SERVICES CORPORATION
 Phone (907) 563-0013 Fax (907) 563-6713

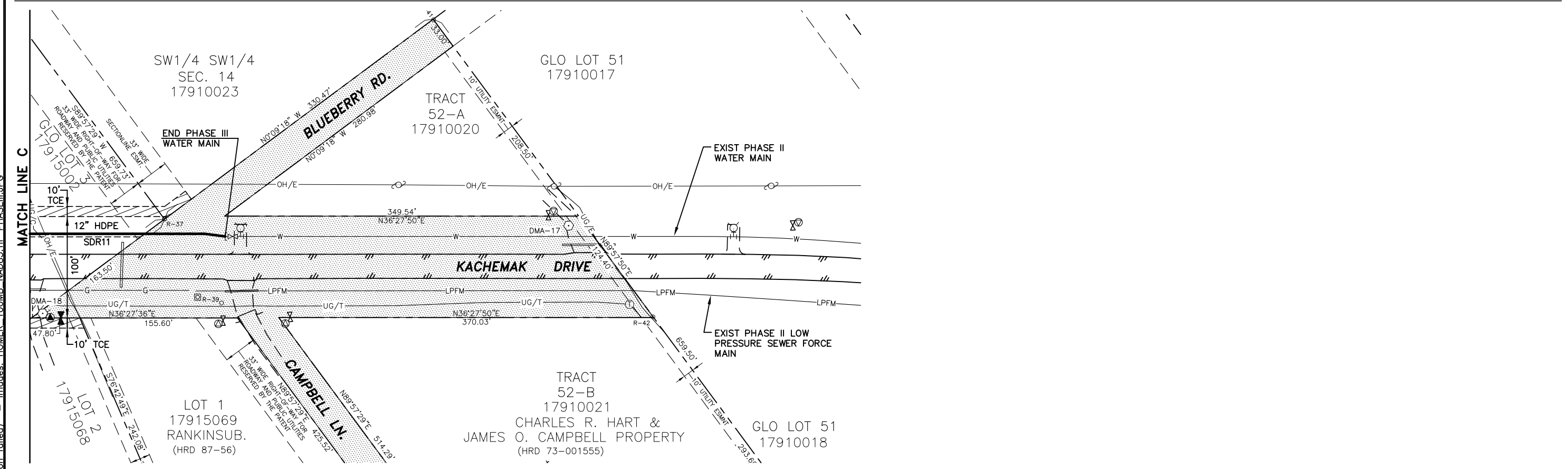
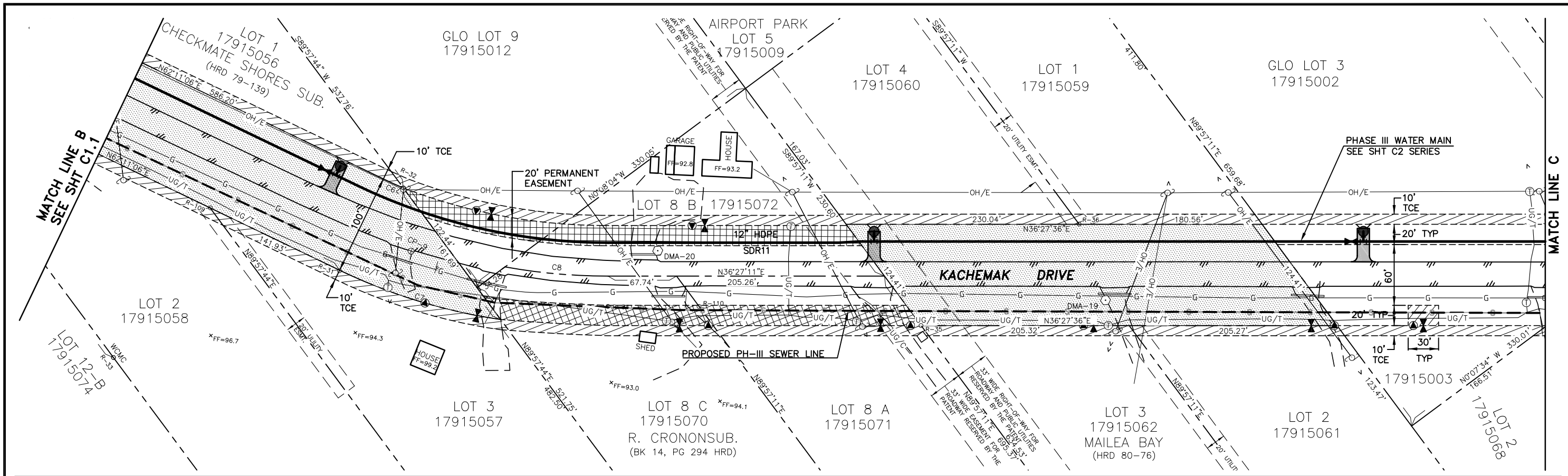
CITY OF HOMER, ALASKA
 PUBLIC WORKS DEPARTMENT
 3575 HEATH STREET
 HOMER, ALASKA 99603
 PHONE: (907) 235-3170
 FAX: (907) 235-3145

CITY OF HOMER - KACHEMAK DRIVE
 PHASE III WATER IMPROVEMENTS

WATER EASEMENTS AND TCE PLAN

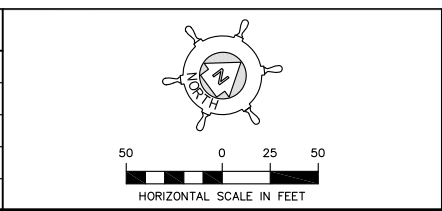
SCALE: SHOWN DESIGNED: SJW CHECKED: KLP DRAWN: SJW DATE: 8/01/16

SHEET NO.
C1.1
 SHEET 6 OF 15



User: RBURODICK Aug 01, 2016 - 1:33pm
 Drawing: C:\USERS\RBURODICK\APPDATA\LOCAL\TEMP\ACPUBLISH_6480\32130074_C1_1-C1_3.DWG - Layout: C1.2
 Xrefs: (DIESEL evaluation failed) - Images: HOMER_100MB_NAD83.TIF PHASEIII.JPG

REVISIONS				
NO.	DATE	BY	DESCRIPTION	



Project No. 32130074

Bristol

ENGINEERING SERVICES CORPORATION
 Phone (907) 563-0013 Fax (907) 563-6713

CITY OF HOMER, ALASKA
 PUBLIC WORKS DEPARTMENT
 3575 HEATH STREET
 HOMER, ALASKA 99603
 PHONE: (907) 235-3170
 FAX: (907) 235-3145

CITY OF HOMER - KACHEMAK DRIVE
 PHASE III WATER IMPROVEMENTS

WATER EASEMENTS AND TCE PLAN

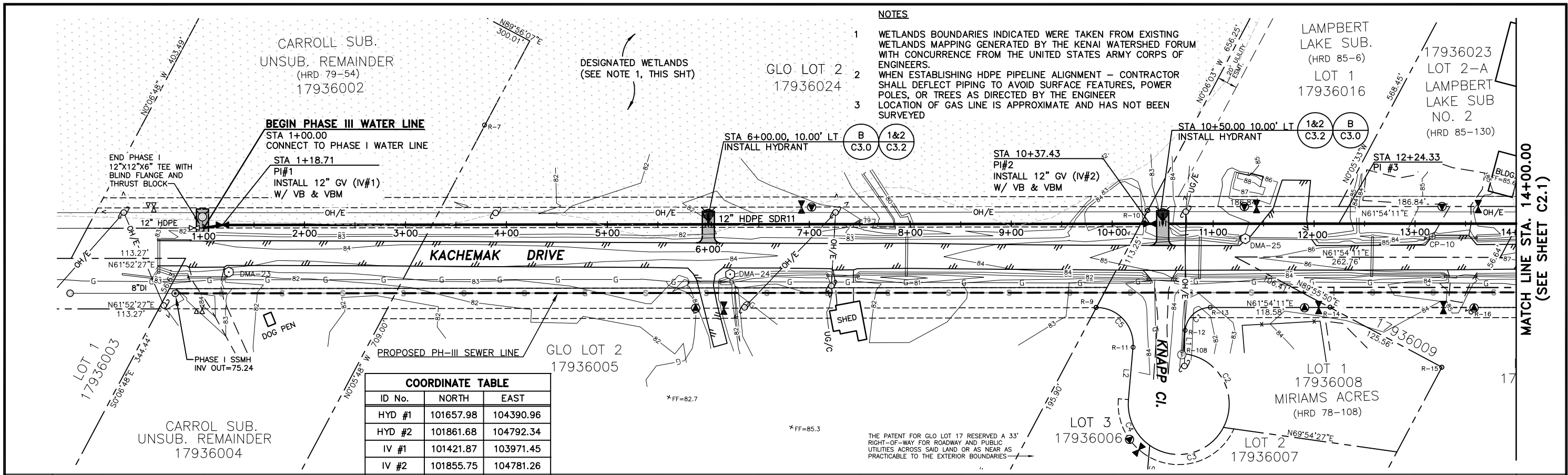
SCALE: SHOWN DESIGNED: SJW CHECKED: KLP DRAWN: SJW DATE: 8/01/16

SHEET NO.

C1.2

SHEET 7 OF 15

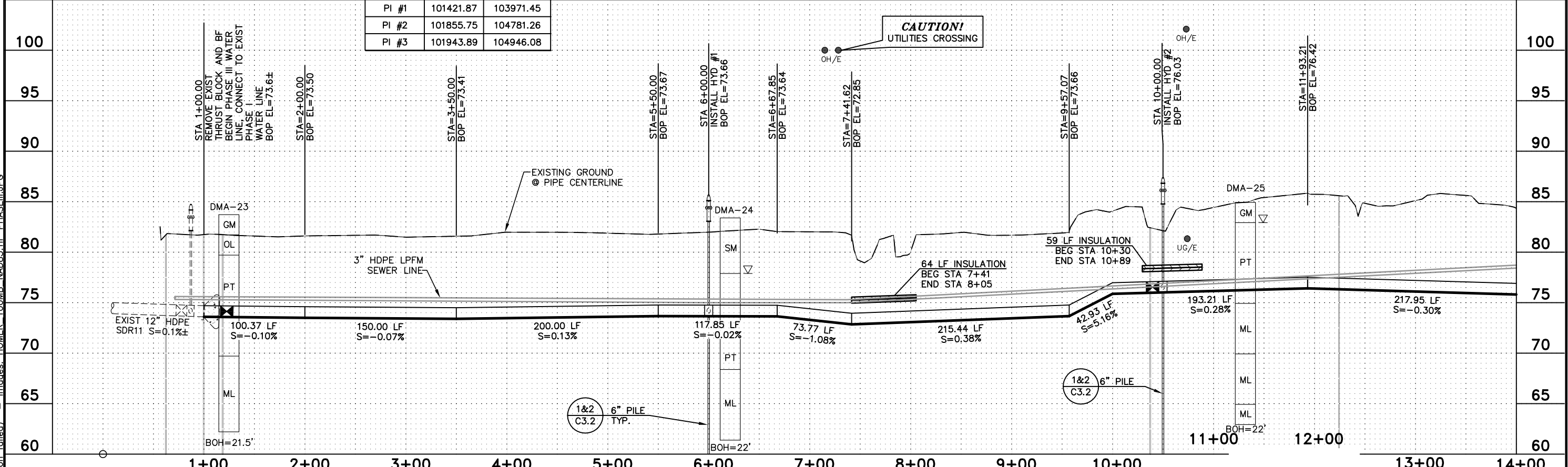
User: RBUARDICK Aug 01, 2016 1:30pm
 Drawing: K:\JOBS\32130074 TO#01 WS IMP\ACAD-DESIGN\TO#1 KACHEMAK DR PH III\DWG\32130074_C2_0-C2_3.DWG - Layout: C2.0
 Xrefs: (DIESEL evaluation failed) - Images: HOMER_100MB_NAD83.TIF PHASEIII.JPG



- NOTES**
- 1 WETLANDS BOUNDARIES INDICATED WERE TAKEN FROM EXISTING WETLANDS MAPPING GENERATED BY THE KENAI WATERSHED FORUM WITH CONCURRENCE FROM THE UNITED STATES ARMY CORPS OF ENGINEERS.
 - 2 WHEN ESTABLISHING HDPE PIPELINE ALIGNMENT - CONTRACTOR SHALL DEFLECT PIPING TO AVOID SURFACE FEATURES, POWER POLES, OR TREES AS DIRECTED BY THE ENGINEER
 - 3 LOCATION OF GAS LINE IS APPROXIMATE AND HAS NOT BEEN SURVEYED

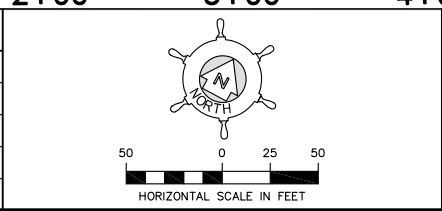
COORDINATE TABLE

ID No.	NORTH	EAST
HYD #1	101657.98	104390.96
HYD #2	101861.68	104792.34
IV #1	101421.87	103971.45
IV #2	101855.75	104781.26
PI #1	101421.87	103971.45
PI #2	101855.75	104781.26
PI #3	101943.89	104946.08



REVISIONS

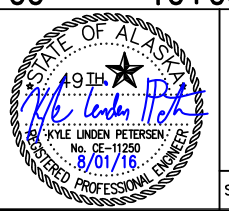
NO.	DATE	BY	DESCRIPTION



Project No. 32130074

Bristol
 ENGINEERING SERVICES CORPORATION
 Phone (907) 563-0013 Fax (907) 563-6713

CITY OF HOMER, ALASKA
 PUBLIC WORKS DEPARTMENT
 3575 HEATH STREET
 HOMER, ALASKA 99603
 PHONE: (907) 235-3170
 FAX: (907) 235-3145



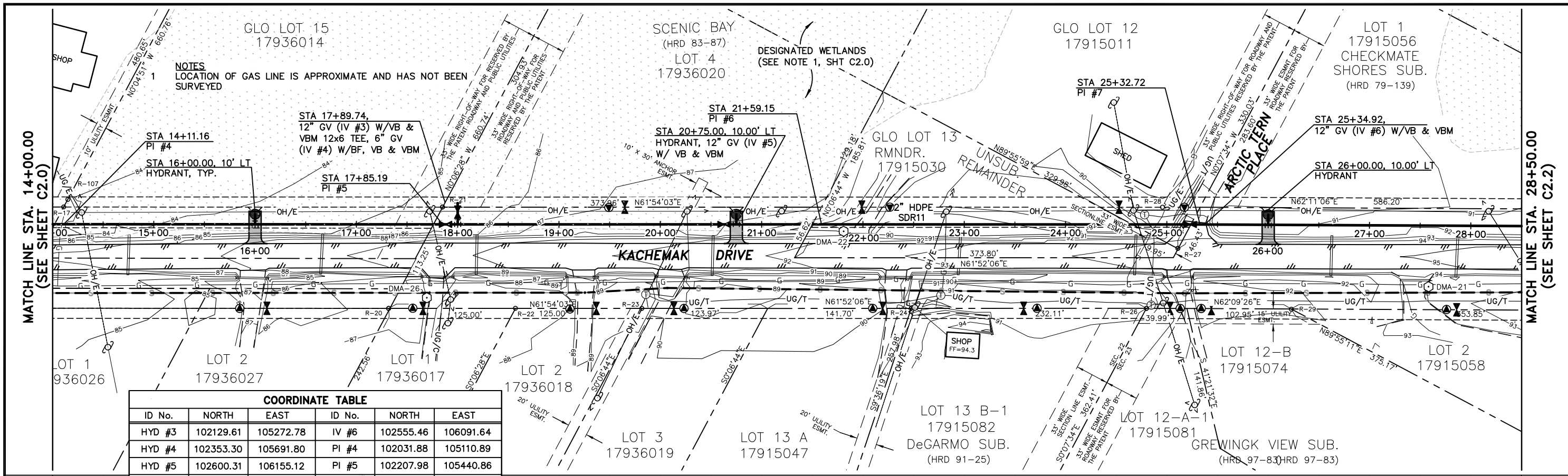
CITY OF HOMER - KACHEMAK DRIVE
 PHASE III WATER IMPROVEMENTS

WATER LINE PLAN & PROFILE
 STA 1+00.00 TO STA 14+00.00

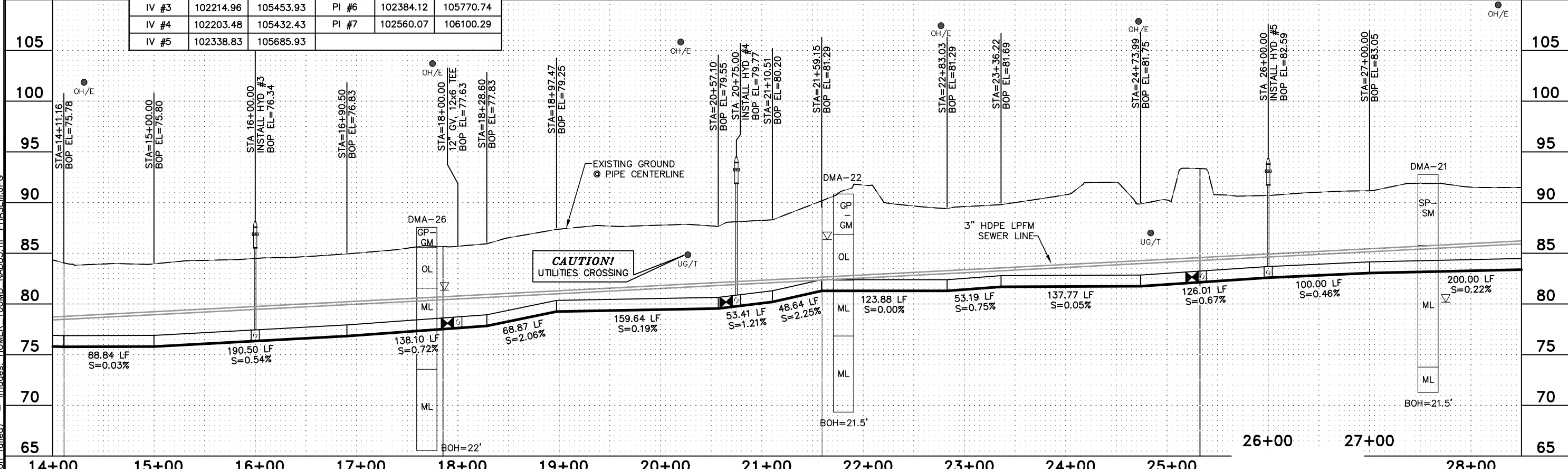
SCALE: SHOWN DESIGNED:FJV CHECKED: KLP DRAWN:SJW DATE: 8/01/16

SHEET NO. **C2.0**
 SHEET 8 OF 15

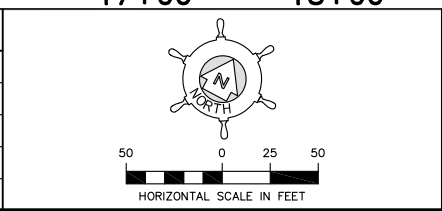
User: REBURDICK Aug 01, 2016 - 1:30pm
 Drawing: K:\JOBS\32130074 TO#01 WS IMP\ACAD-DESIGN\TO#1 KACHEMAK DR PH III\DWG\32130074_C2_0-C2_3.DWG - Layout: C2.1
 Xrefs: (DIESEL evaluation failed) - Images: HOMER_100MB_NAD83.TIF PHASEIII.JPG



COORDINATE TABLE					
ID No.	NORTH	EAST	ID No.	NORTH	EAST
HYD #3	102129.61	105272.78	IV #6	102555.46	106091.64
HYD #4	102353.30	105691.80	PI #4	102031.88	105110.89
HYD #5	102600.31	106155.12	PI #5	102207.98	105440.86
IV #3	102214.96	105453.93	PI #6	102384.12	105770.74
IV #4	102203.48	105432.43	PI #7	102560.07	106100.29
IV #5	102338.83	105685.93			



REVISIONS				
NO.	DATE	BY	DESCRIPTION	

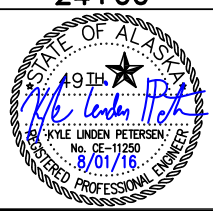


Project No. 32130074

Bristol

ENGINEERING SERVICES CORPORATION
 Phone (907) 563-0013 Fax (907) 563-6713

CITY OF HOMER, ALASKA
 PUBLIC WORKS DEPARTMENT
 3575 HEATH STREET
 HOMER, ALASKA 99603
 PHONE: (907) 235-3170
 FAX: (907) 235-3145



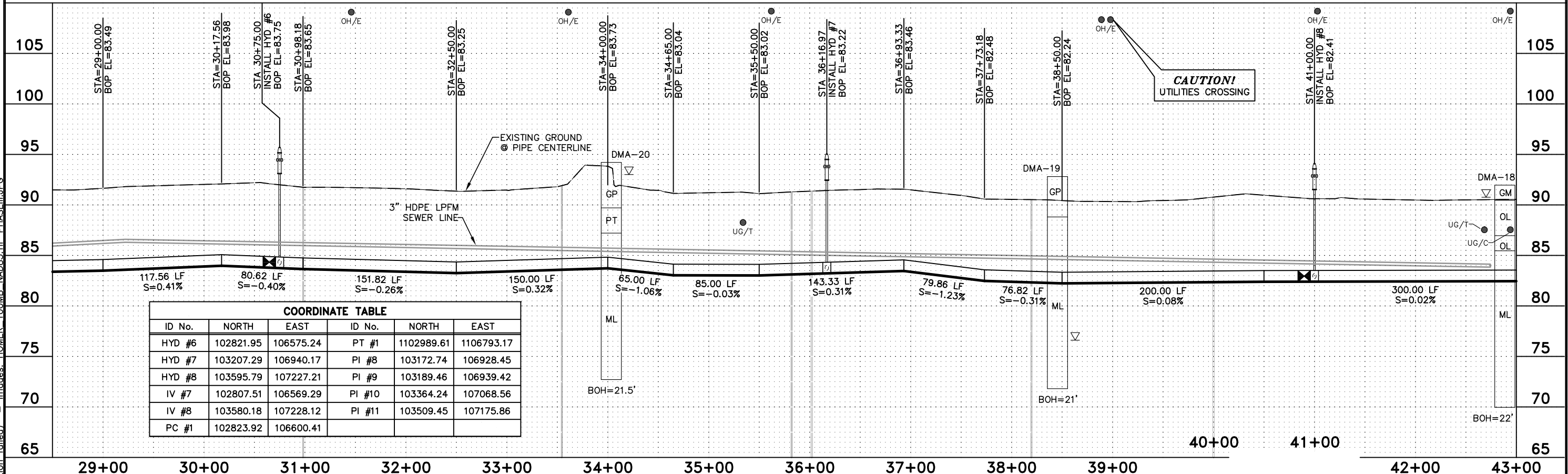
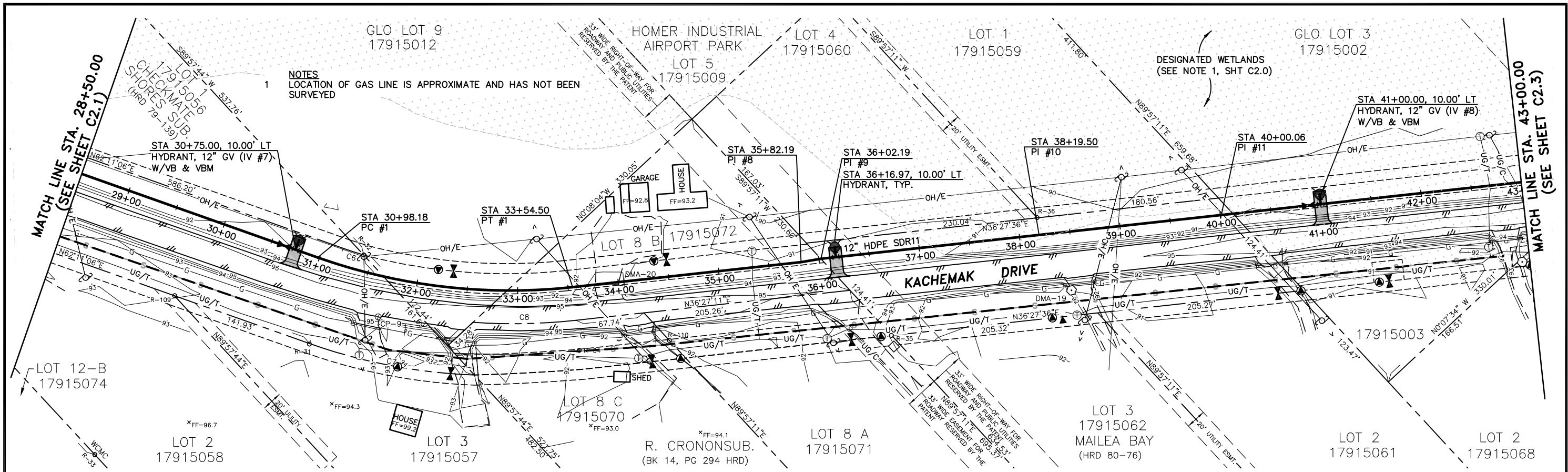
CITY OF HOMER - KACHEMAK DRIVE
 PHASE III WATER IMPROVEMENTS

WATER LINE PLAN & PROFILE
 STA 14+00.00 TO STA 28+50.00

SHEET NO. **C2.1**

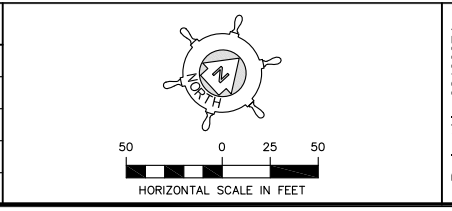
SCALE: SHOWN DESIGNED:FJV CHECKED: FJV DRAWN:SJW DATE: 8/01/16 SHEET **9** OF 15

User: RBUICK Aug 01, 2016 1:30pm
 Drawing: K:\JOBS\32130074 TO#01 WS IMP\ACAD-DESIGN\TO#1 KACHEMAK DR PH III\DWG\32130074_C2_0-C2_3.DWG - Layout: C2.2
 Xrefs: (DIESEL evaluation failed) - Images: HOMER_100MB_NAD83.TIF PHASEIII.JPG



COORDINATE TABLE					
ID No.	NORTH	EAST	ID No.	NORTH	EAST
HYD #6	102821.95	106575.24	PT #1	1102989.61	1106793.17
HYD #7	103207.29	106940.17	PI #8	103172.74	106928.45
HYD #8	103595.79	107227.21	PI #9	103189.46	106939.42
IV #7	102807.51	106569.29	PI #10	103364.24	107068.56
IV #8	103580.18	107228.12	PI #11	103509.45	107175.86
PC #1	102823.92	106600.41			

REVISIONS				
NO.	DATE	BY	DESCRIPTION	



Project No. 32130074

Bristol
 ENGINEERING SERVICES CORPORATION
 Phone (907) 563-0013 Fax (907) 563-6713

CITY OF HOMER, ALASKA
 PUBLIC WORKS DEPARTMENT
 3575 HEATH STREET
 HOMER, ALASKA 99603
 PHONE: (907) 235-3170
 FAX: (907) 235-3145

Kyle Linden Petersen
 No. CE-11289
 8/01/16
 REGISTERED PROFESSIONAL ENGINEER

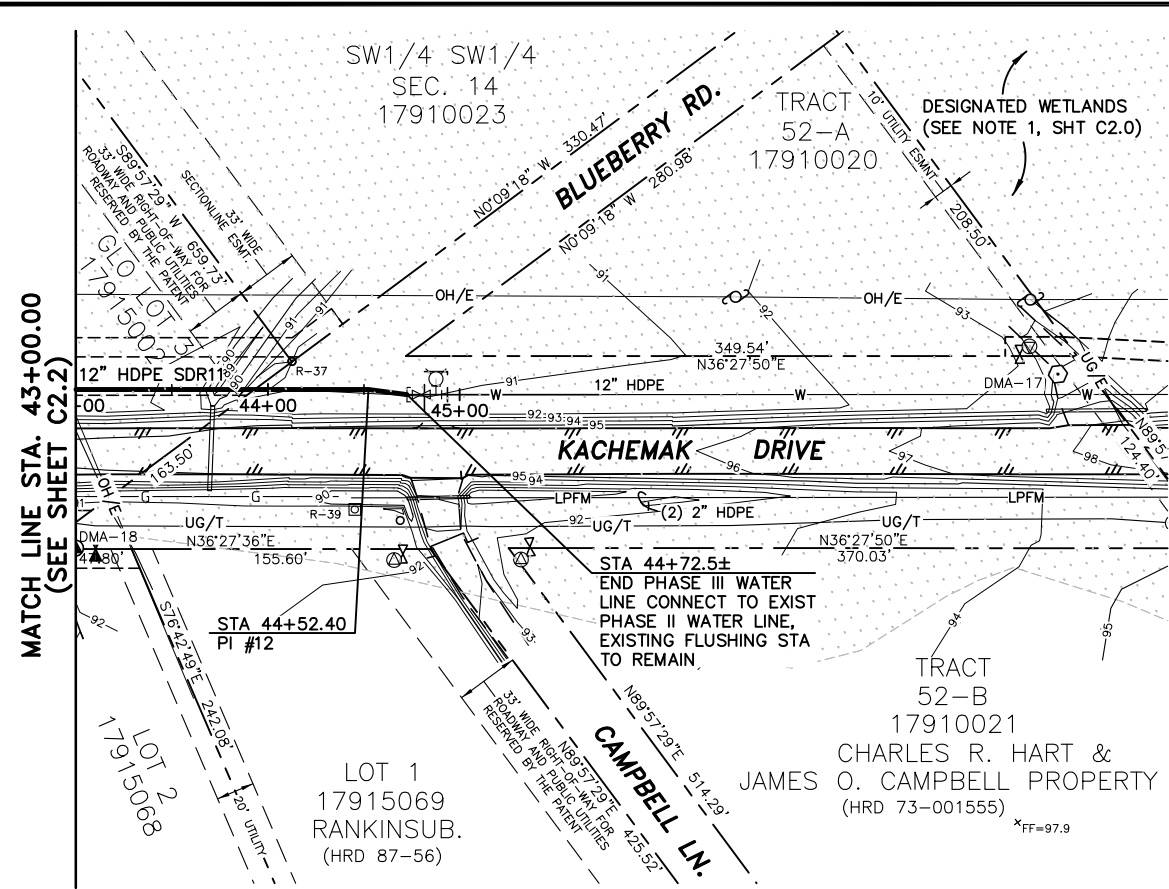
CITY OF HOMER - KACHEMAK DRIVE
 PHASE III WATER IMPROVEMENTS

WATER LINE PLAN & PROFILE
 STA 28+50.00 TO STA 43+00.00

SCALE: SHOWN DESIGNED:FJV CHECKED: KLP DRAWN:SJW DATE: 8/01/16

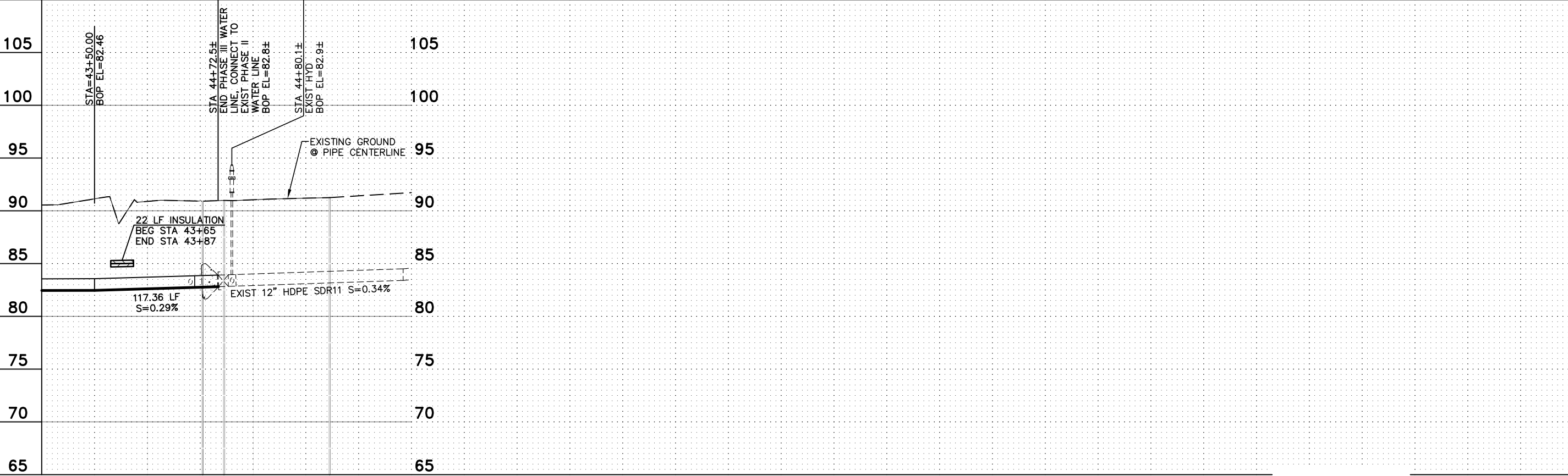
SHEET NO. **C2.2**
 SHEET 10 OF 15

User: RBUARDICK Aug 01, 2016 1:30pm
 Drawing: K:\JOBS\32130074 TO#01 WS IMP\ACAD-DESIGN\TO#1 KACHEMAK DR PH III\DWG\32130074_C2_0-C2_3.DWG - Layout: C2.3
 Xrefs: (DIESEL evaluation failed) - Images: HOMER_100MB_NAD83.TIF PHASEIII.JPG

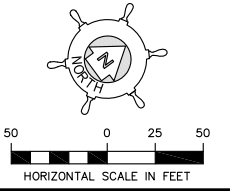


COORDINATE TABLE		
ID No.	NORTH	EAST
PI #12	103873.26	107444.67

NOTES
 1 LOCATION OF GAS LINE IS APPROXIMATE AND HAS NOT BEEN SURVEYED



REVISIONS			
NO.	DATE	BY	DESCRIPTION



Project No. 32130074

Bristol
 ENGINEERING SERVICES CORPORATION
 Phone (907) 563-0013 Fax (907) 563-6713

CITY OF HOMER, ALASKA
 PUBLIC WORKS DEPARTMENT
 3575 HEATH STREET
 HOMER, ALASKA 99603
 PHONE: (907) 235-3170
 FAX: (907) 235-3145

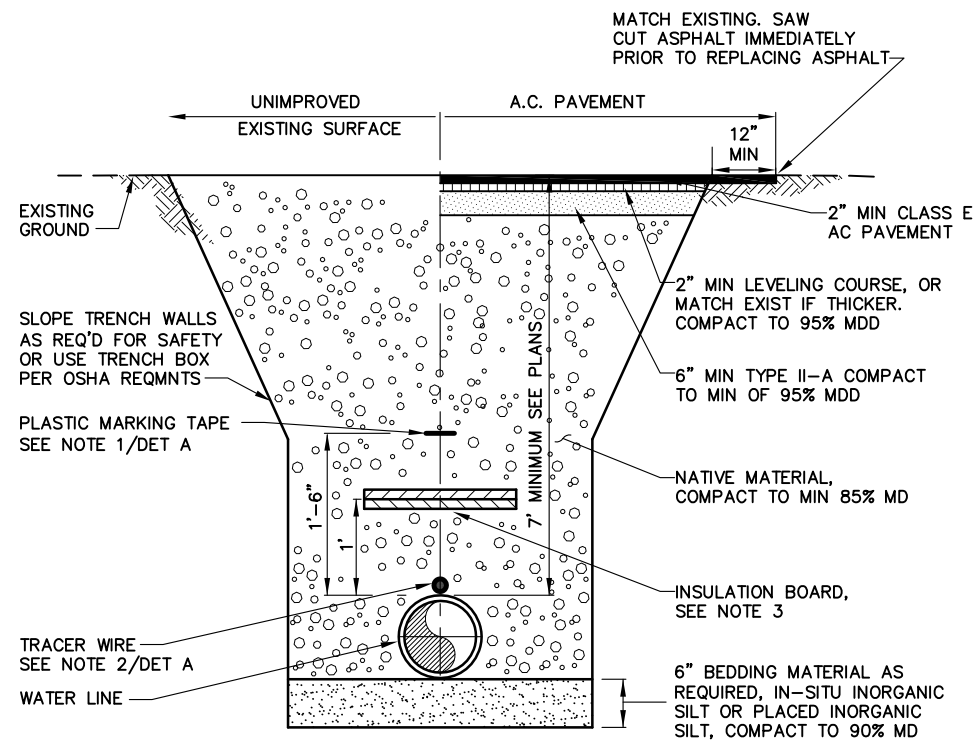
CITY OF HOMER - KACHEMAK DRIVE
 PHASE III WATER IMPROVEMENTS

WATER LINE PLAN & PROFILE
 STA 43+00.00 TO STA 44+72.5±

SCALE: SHOWN DESIGNED:FJV CHECKED: KLP DRAWN:SJW DATE: 8/01/16

SHEET NO.
C2.3
SHEET 11 OF 15

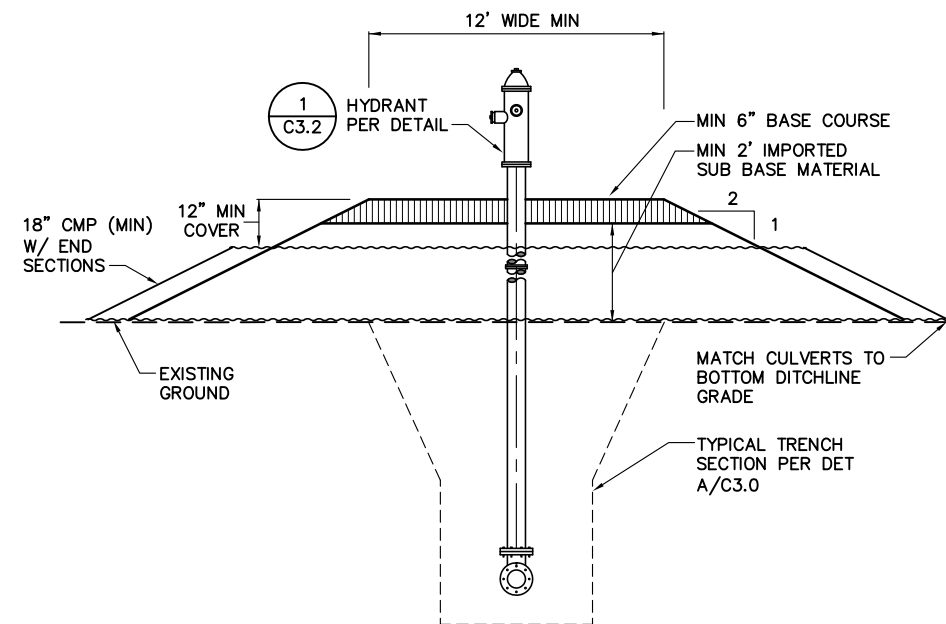
User: RBURODICK Aug 01, 2016 - 1:34pm
 Drawing: C:\USERS\RBURODICK\APPDATA\LOCAL\TEMP\ACPUBLISH_6480\32130074_C3_0-C3_2.DWG - Layout: C3.0
 Xrefs: 32130074_BORD.DWG - Images: None



NOTES:

1. PLASTIC MARKING TAPE IS REQUIRED FOR ALL PLASTIC OR NONFERROUS PIPE.
2. FURNISH AND INSTALL TRACER WIRE DIRECTLY ON TOP OF AND SECURE TO THE WATER MAIN. REFER TO THE SPECIAL PROVISIONS FOR TRACE WIRE SPECIFICATIONS.
3. INSULATE WHERE SHOWN IN PROFILE, SEE C.O.H. STANDARD DETAIL 700.01. PROVIDE 1" OF INSULATION BOARD FOR EACH FOOT OF BURY LESS THAN MIN. SHOWN.
4. UPLAND TRENCH SECTION APPLIES TO WATER LINE STA 17+00 TO STA 44+72.6±.

A **TYPICAL TRENCH SECTION**
 SCALE: NTS



B **HYDRANT ACCESS PAD**
 SCALE: NTS

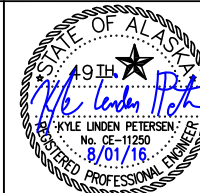
REVISIONS				
NO.	DATE	BY	DESCRIPTION	

Project No. 32130074

Bristol
 ENGINEERING SERVICES CORPORATION
 Phone (907) 563-0013 Fax (907) 563-6713



CITY OF HOMER, ALASKA
 PUBLIC WORKS DEPARTMENT
 3575 HEATH STREET
 HOMER, ALASKA 99603
 PHONE: (907) 235-3170
 FAX: (907) 235-3145



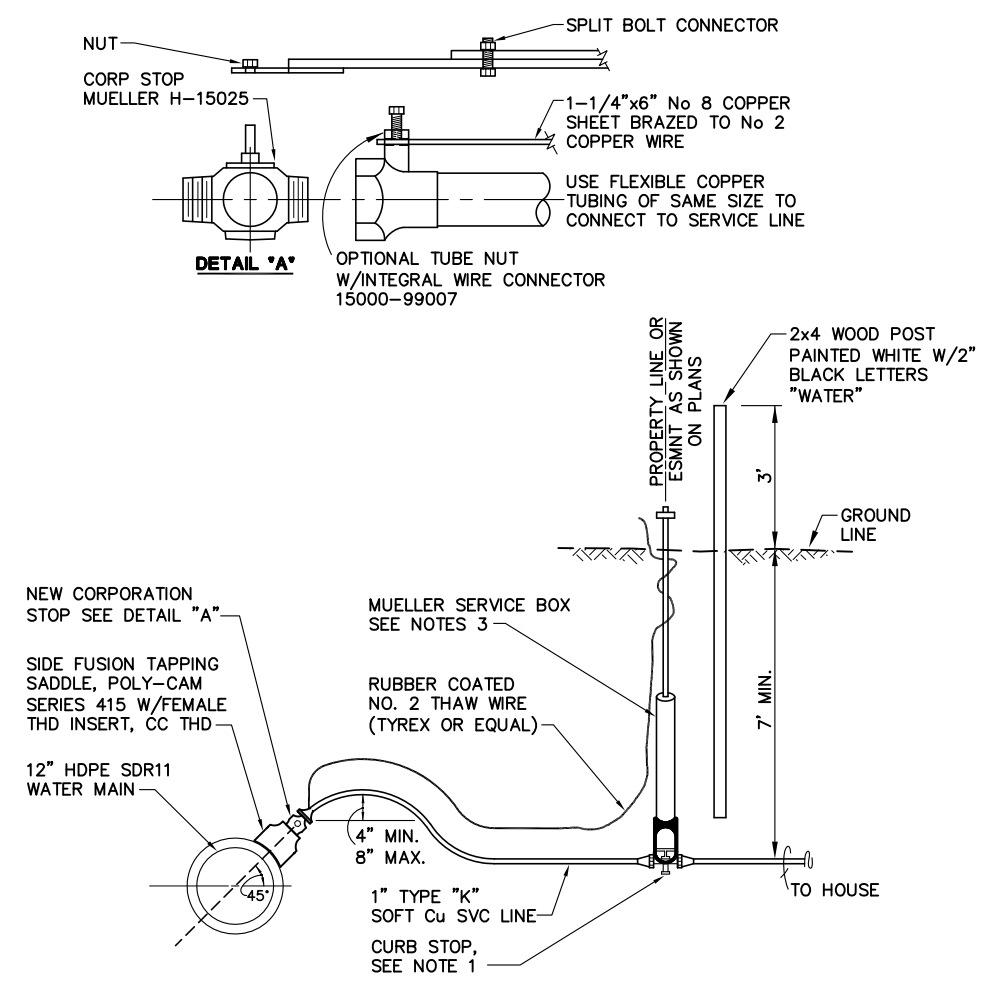
CITY OF HOMER - KACHEMAK DRIVE
 PHASE III WATER IMPROVEMENTS

TYPICAL SECTIONS

SCALE: SHOWN DESIGNED:FJV CHECKED: KLP DRAWN:SJW DATE: 8/01/16

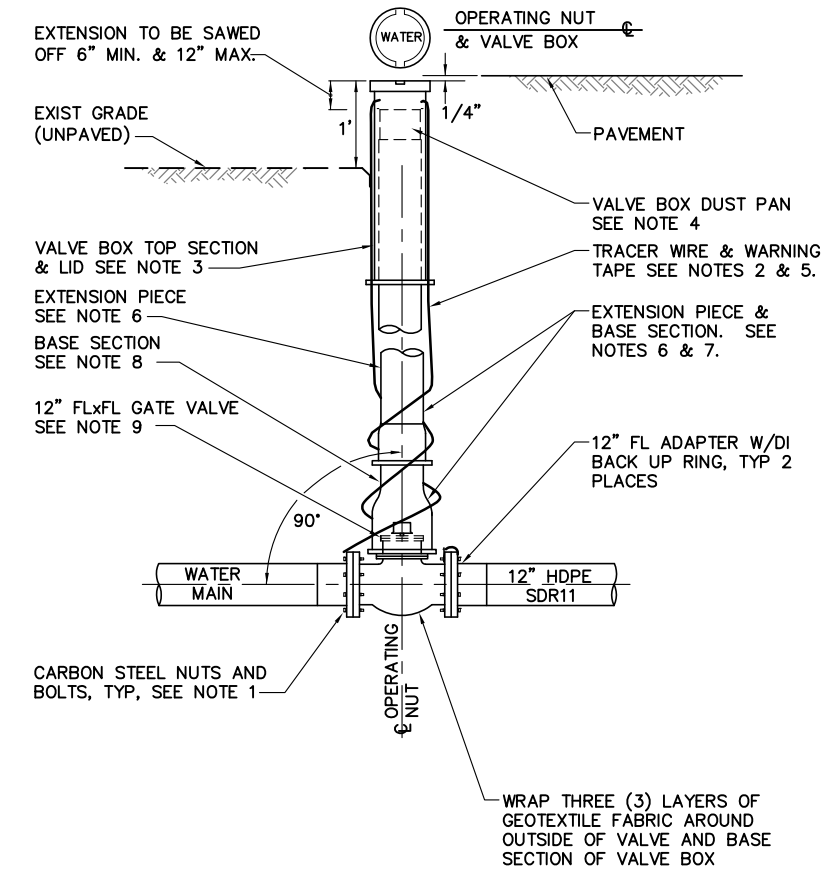
SHEET NO.
C3.0
 SHEET 12 OF 15

User: RBURDICK Aug 01, 2016 - 1:34pm
 Drawing: C:\USERS\RBURDICK\APPDATA\LOCAL\TEMP\AC\PUBLISH_6480\32130074_C3_0-C3_2.DWG - Layout: C3.1
 Xrefs: 32130074_BORD.DWG - Images: None



- NOTES:**
1. CURB STOP SHALL BE 1" MUELLER H-15204 OR APPROVED EQUAL.
 2. A THREE (3) INCH WIDE DETECTABLE TAPE MARKED AND COLOR CODED PER THE COH SPECIAL PROVISIONS SHALL BE BURIED IN THE TRENCH ABOVE ALL WATER SERVICE CONNECTIONS.
 3. SERVICE BOX SHALL BE MUELLER H-10306 OR APPROVED EQUAL. ROD SHALL BE ATTACHED TO CURB STOP WITH No. 6 GAUGE COPPER WIRE (NO EXCEPTIONS).

A
WATER SERVICE CONNECT
 SCALE: NTS



- NOTES:**
1. ALL CARBON STEEL BOLT THREADS SHALL BE COATED WITH TS MOLY-LUBRICANTS TS-74 STAINLESS ANTISEIZE, OR APPROVED EQUAL, IN ACCORDANCE WITH MANUFACTURER'S RECOMMENDATIONS.
 2. FURNISH & INSTALL TRACER WIRE DIRECTLY ON TOP OF AND SECURE TO THE WATER MAIN. REFER TO THE SPECIAL PROVISIONS FOR TRACE WIRE SPECIFICATIONS.
 3. LID AND TOP SECTION SHALL BE OLYMPIC FOUNDRY TYPE C OR APPROVED EQUAL.
 4. VALVE BOX DUST PAN SHALL BE MADE OF 14 GAUGE HREW TUBE.
 5. REFER TO TRENCH DETAIL A/C3.0 FOR LOCATION OF TRACER WIRE AND WARNING TAPE IN RELATION TO WATER PIPE.
 6. TAPE COAT EXTENSION PIECE AND BASE SECTION WITH DENSYL TAPE OR APPROVED EQUAL IN ACCORDANCE WITH THE SPECIFICATIONS. PRIME SURFACES WITH DENSO PASTE OR APPROVED EQUAL.
 7. EXTENSION PIECE SHALL BE OLYMPIC FOUNDRY TYPE A, 10 FOOT SECTION OF 5" DIA. SINGLE HUB SOIL PIPE OR APPROVED EQUAL.
 8. BASE SECTION SHALL BE OLYMPIC FOUNDRY TYPE B OR APPROVED EQUAL.
 9. BONNET BOLTS ON ALL VALVES SHALL BE CARBON STEEL.

B
WATER MAIN ISOLATION VALVE
 SCALE: NTS

REVISIONS				
NO.	DATE	BY	DESCRIPTION	

Project No. 32130074

Bristol
 ENGINEERING SERVICES CORPORATION
 Phone (907) 563-0013 Fax (907) 563-6713

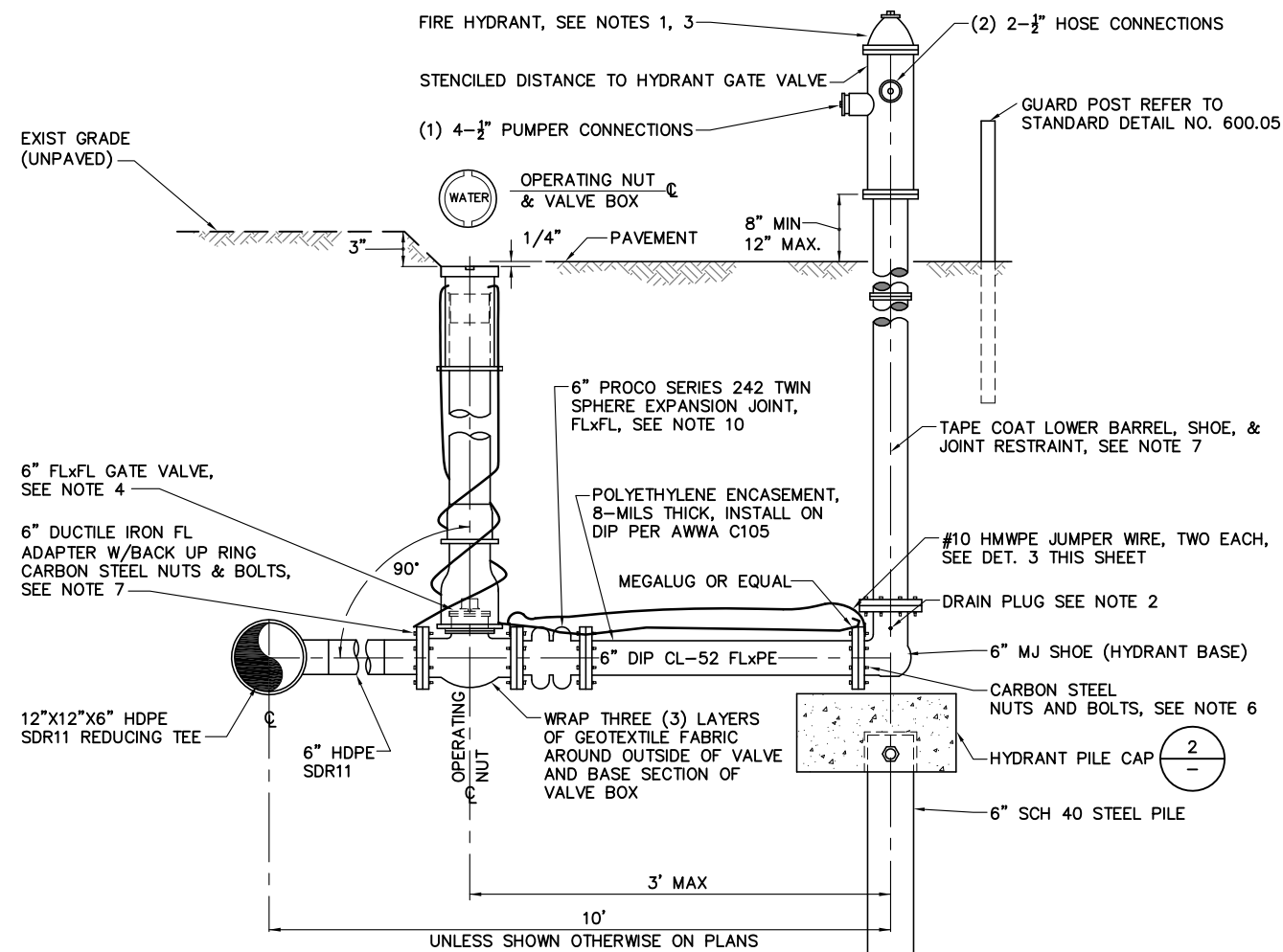
CITY OF HOMER, ALASKA
 PUBLIC WORKS DEPARTMENT
 3575 HEATH STREET
 HOMER, ALASKA 99603
 PHONE: (907) 235-3170
 FAX: (907) 235-3145

STATE OF ALASKA
 49TH
 KYLE LINDEN PETERSEN
 No. CE-11250
 8/01/16
 REGISTERED PROFESSIONAL ENGINEER

CITY OF HOMER - KACHEMAK DRIVE
 PHASE III WATER IMPROVEMENTS
WATER MAIN DETAILS
 SCALE: SHOWN DESIGNED:FJV CHECKED: KLP DRAWN:SJW DATE: 8/01/16

SHEET NO.
C3.1
 SHEET 13 OF 15

User: RBURDICK Aug 01, 2016 1:34pm
 Drawing: C:\USERS\RBURDICK\APPDATA\LOCAL\TEMP\AC\PUBLISHED\6480\32130074_C3_0-C3_2.DWG - Layout: C3.2
 Xrefs: 32130074_BOARD.DWG - Images: None

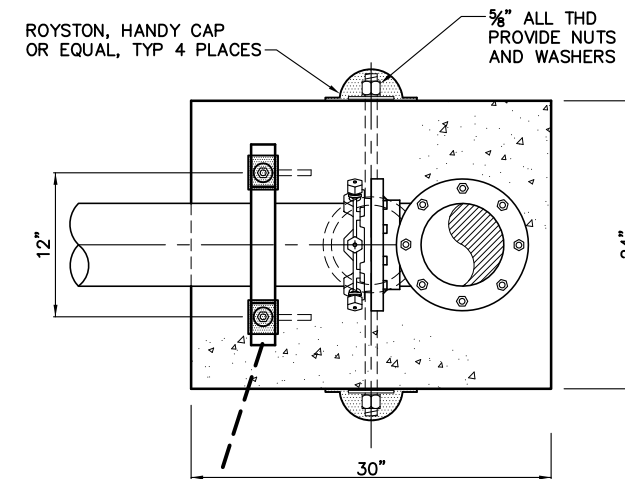


HYDRANT INSTALLATION NOTES:

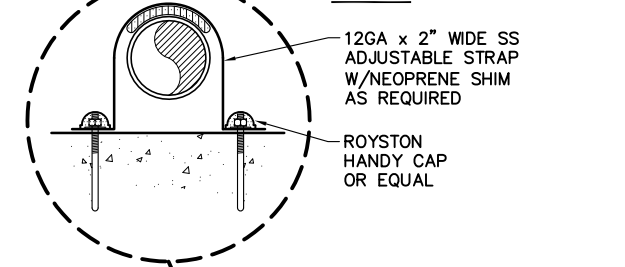
- HYDRANT BARREL SHALL BE INSTALLED PLUMB AND THE LEG SHALL BE INSTALLED LEVEL.
- DRAIN PLUG SHALL BE INSTALLED BY CONTRACTOR.
- ALL HYDRANTS SHALL BE PAINTED CATERPILLAR YELLOW.
- VALVE BOX SHALL BE INSTALLED ACCORDING TO DETAIL B/C3.1 FOR TYPICAL VALVE & VALVE BOX ASSEMBLY.
- FURNISH AND INSTALL RUBBER GASKET BETWEEN VALVE AND MECHANICAL JOINT RESTRAINT.
- ALL CARBON STEEL BOLT THREADS SHALL BE COATED WITH TS-MOLY LUBRICANTS, TS-STAINLESS ANTI-SEIZE, OR APPROVED EQUAL, IN ACCORDANCE WITH MANUFACTURER'S RECOMMENDATIONS.
- TAPE COAT WITH DENSYL TAPE OR APPROVED EQUAL IN ACCORDANCE WITH THE SPECIFICATIONS. PRIME SURFACES WITH DENSO PASTE OR APPROVED EQUAL.
- FURNISH AND INSTALL ANODE AS SHOWN IN THIS DETAIL FOR SINGLE PUMPER HYDRANT ASSEMBLY. JUMPER ANODE TO NEARBY VALVES WHERE SHOWN ON THE DRAWINGS.
- INSTALL HYDRANT PILE CAP AND STEEL PIPE FOR HYDRANTS WHERE SHOWN ON PLAN SHEETS.

TYPICAL - SINGLE PUMPER "L" BASE HYDRANT ASSEMBLY DETAIL

SCALE: NTS



PLAN



SECTION

INSTALL AT STATIONS
 6+00.00
 10+50.00

HYDRANT PILE CAP DETAIL

SCALE: NTS

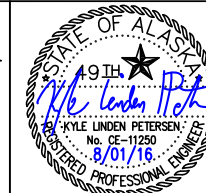
REVISIONS				
NO.	DATE	BY	DESCRIPTION	

Project No. 32130074

Bristol
 ENGINEERING SERVICES CORPORATION
 Phone (907) 563-0013 Fax (907) 563-6713



CITY OF HOMER, ALASKA
 PUBLIC WORKS DEPARTMENT
 3575 HEATH STREET
 HOMER, ALASKA 99603
 PHONE: (907) 235-3170
 FAX: (907) 235-3145



CITY OF HOMER - KACHEMAK DRIVE
 PHASE III WATER IMPROVEMENTS

WATER MAIN DETAILS

SCALE: SHOWN DESIGNED:FJV CHECKED: KLP DRAWN:SJW DATE: 8/01/16

SHEET NO.

C3.2

SHEET 14 OF 15

User: RBURDICK Aug 01, 2016 - 1:34pm
 Drawing: C:\USERS\RBURDICK\APPDATA\LOCAL\TEMP\AC\PUBLISH_6480\32130074_C3_3.DWG - Layout: C3.3
 Xrefs: 32130074_BORD.DWG - Images: None

WATER SERVICE CONNECTION TABLE KACHEMAK DRIVE											
SVC. NO.	AP NO.	LOT	SHT NO	WTR LINE DESIGN	STA @ MAIN ASBUILT ②	OFFSET (FT)	B.O.P. @ P ASBUILT ②	T.O.P. @ MAIN ASBUILT ②	SVC	ASBUILT COORDINATES ①②	
										NORTH	EAST
1	17936005	GLO LOT 2	C2.0	6+15	-	83.0 R	-	-	1 1/4" PE	-	-
2	17936024	GLO LOT 2	C2.0	6+92	-	17.0 L	-	-	1 1/4" PE	-	-
3	17936006	LOT 3	C2.0	10+26	-	223.6 R	-	-	1 1/4" PE	-	-
4	17936016	LOT 1	C2.0	11+43	-	17.0 L	-	-	1 1/4" PE	-	-
5	17936008	LOT 1	C2.0	12+04	-	83.0 R	-	-	1 1/4" PE	-	-
6	17936026	LOT 1	C2.0	13+28	-	83.0 R	-	-	1 1/4" PE	-	-
7	17936023	LOT 2-A	C2.0	13+63	-	17.0 L	-	-	1 1/4" PE	-	-
8	17936027	LOT 2	C2.1	16+12	-	83.0 R	-	-	1 1/4" PE	-	-
9	17936017	LOT 1	C2.1	17+66	-	83.0 R	-	-	1 1/4" PE	-	-
10	17936018	LOT 2	C2.1	19+37	-	83.0 R	-	-	1 1/4" PE	-	-
11	17936020	LOT 4	C2.1	19+65	-	17.0 L	-	-	1 1/4" PE	-	-
12	17936019	LOT 3	C2.1	20+13	-	83.0 R	-	-	1 1/4" PE	-	-
13	17915030	GLO LOT 13	C2.1	21+99	-	17.0 L	-	-	1 1/4" PE	-	-
14	17915047	LOT 13A	C2.1	22+20	-	83.0 R	-	-	1 1/4" PE	-	-
15	17915082	LOT 13 B-1	C2.1	23+59	-	82.9 R	-	-	1 1/4" PE	-	-
16	17915011	GLO LOT 12	C2.1	24+53	-	17.0 L	-	-	1 1/4" PE	-	-
17	17915081	LOT 12-A-1	C2.1	25+03	-	82.9 R	-	-	1 1/4" PE	-	-
18	17915074	LOT 12-B	C2.1	25+44	-	83.0 R	-	-	1 1/4" PE	-	-
19	17915058	LOT 2	C2.1	27+86	-	83.0 R	-	-	1 1/4" PE	-	-
20	17915012	GLO LOT 9	C2.2	32+35	-	16.4 L	-	-	1 1/4" PE	-	-
21	17915057	LOT 3	C2.2	32+41	-	84.9 R	-	-	1 1/4" PE	-	-
22	17915070	LOT 8 C	C2.2	34+25	-	81.9 R	-	-	1 1/4" PE	-	-
23	17915072	LOT 8 B	C2.2	34+50	-	17.0 L	-	-	1 1/4" PE	-	-
24	17915071	LOT 8 A	C2.2	36+23	-	82.7 R	-	-	1 1/4" PE	-	-
25	17915062	LOT 3	C2.2	38+34	-	82.9 R	-	-	1 1/4" PE	-	-
26	17915061	LOT 2	C2.2	40+49	-	83.0 R	-	-	1 1/4" PE	-	-
27	17915003	GLO LOT 3	C2.2	41+59	-	83.0 R	-	-	1 1/4" PE	-	-
28	17915068	LOT 2	C2.3	43+10	-	83.0 R	-	-	1 1/4" PE	-	-

TO BE COMPLETED BY C.O.H.

NOTES

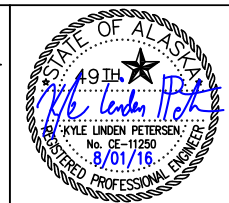
- ① ASBUILT NORTHINGS AND EASTINGS ARE PER C.O.H COORDINATE SYSTEM.
- ② TO BE COMPLETED BY THE PROJECT INSPECTOR.

REVISIONS				
NO.	DATE	BY	DESCRIPTION	

Project No. 32130074

Bristol
 ENGINEERING SERVICES CORPORATION
 Phone (907) 563-0013 Fax (907) 563-6713

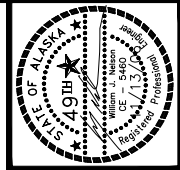
CITY OF HOMER, ALASKA
 PUBLIC WORKS DEPARTMENT
 3575 HEATH STREET
 HOMER, ALASKA 99603
 PHONE: (907) 235-3170
 FAX: (907) 235-3145



CITY OF HOMER – KACHEMAK DRIVE
 PHASE II WATER AND SEWER IMPROVEMENTS
WATER SERVICE CONNECTION TABLE

SCALE: SHOWN DESIGNED: SJW CHECKED: KLP DRAWN: SJW DATE: 8/01/16

SHEET NO.
C3.3
 SHEET 15 OF 15

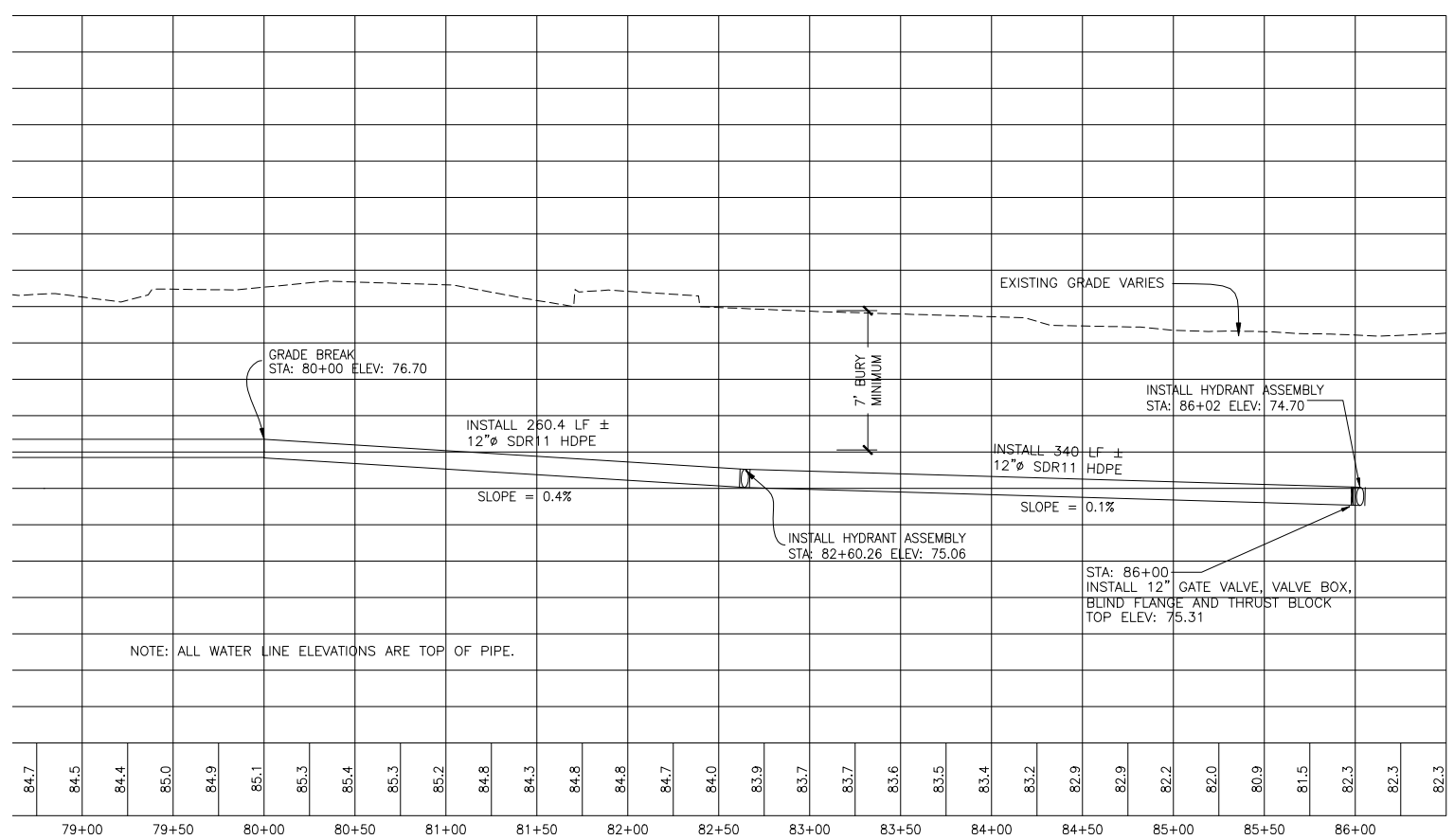
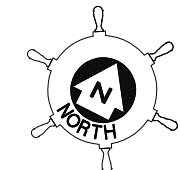
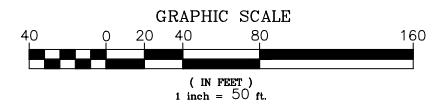
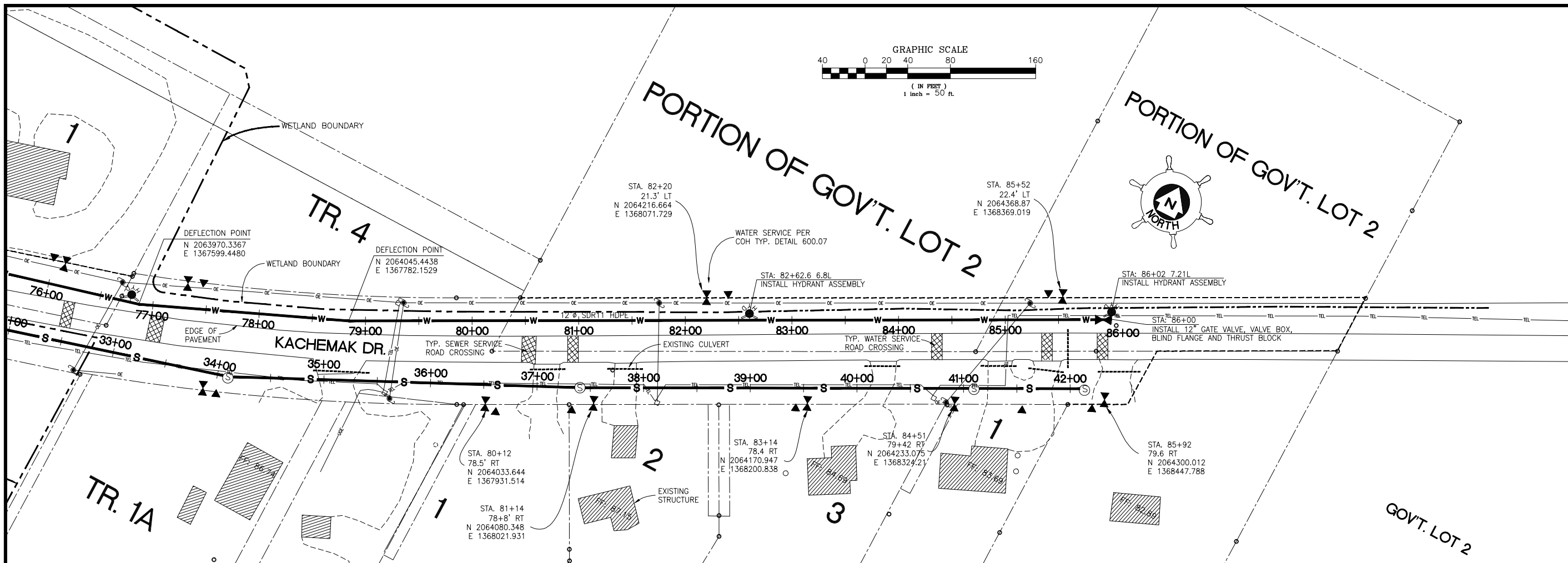


NO.	REVISION	DATE
1	REVISION	7/26/06
2	REVISION	11/13/06
3	RECORD DRAWING	11/9/07

WILLIAM J. NELSON & ASSOCIATES
CONSULTING ENGINEERS - STRUCTURAL/CIVIL
155 BIDARCA ST.
KENAI, ALASKA
99611 (907) 283-3583

HOMER LID
CITY OF HOMER
KACHEMAK DRIVE WATER EXRENSION
PLAN AND PROFILE STA: 76+00 - 86+00

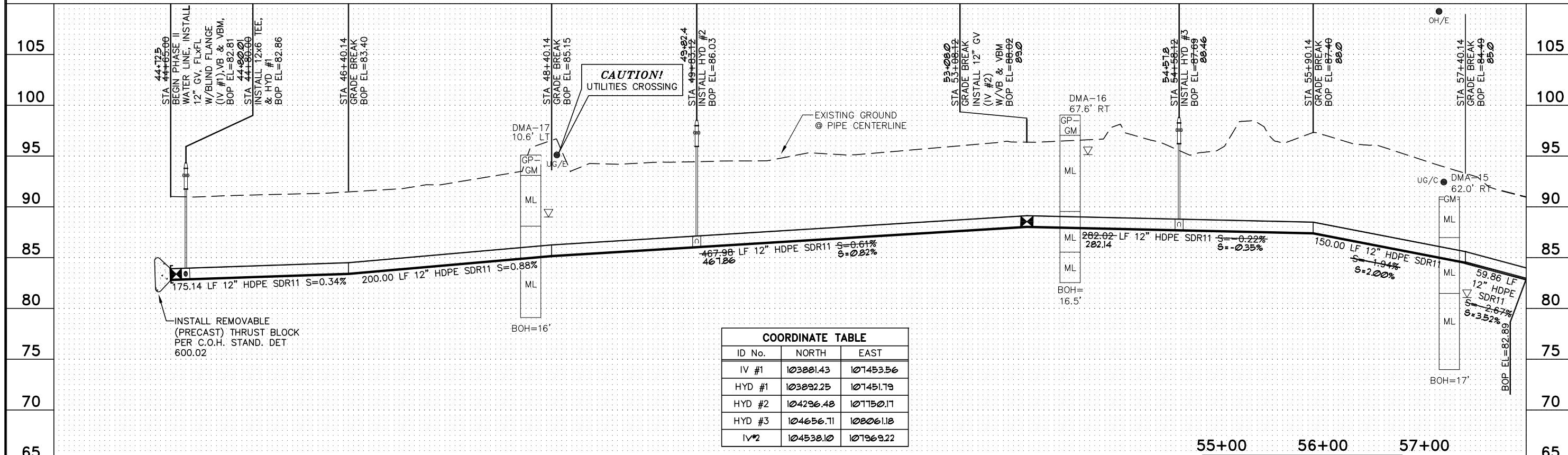
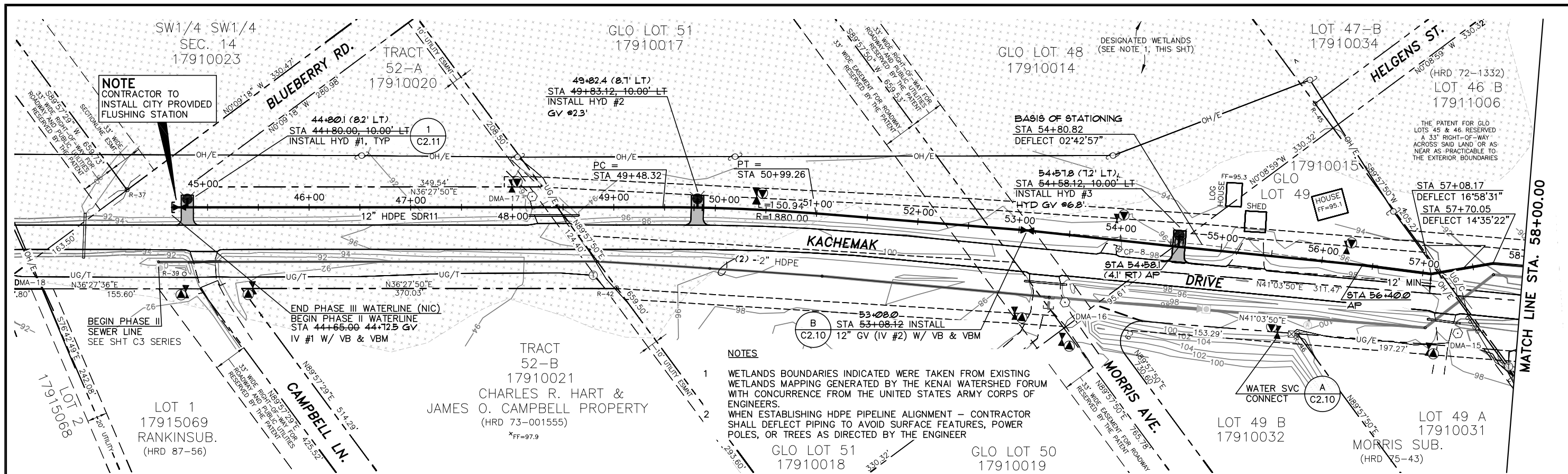
PROJECT NO. 0431
DRAWN BY: BWL
CHECKED BY: WJN
DATE: 6/20/06
SCALES: NOTED
HORIZ. NOTED
VERT. 1"=10'
SHEET 8 OF 11



RECORD DRAWING:
WATER AND SEWER RECORD DRAWING INFORMATION WAS
PROVIDED BY THE CONTRACTOR AND CITY OF HOMER.
OTHER UTILITIES ARE FOR REFERENCE ONLY.

A STA: 76+00 - 86+00 PLAN AND PROFILE
8 SCALE: 1"=50' 24x36, 1"=100' 11x17

02566

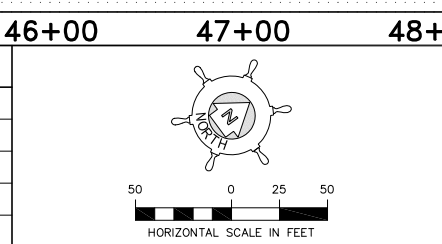


COORDINATE TABLE

ID No.	NORTH	EAST
IV #1	103881.43	107453.56
HYD #1	103892.25	107451.79
HYD #2	104296.48	107750.17
HYD #3	104656.71	108061.18
IV #2	104538.10	107969.22

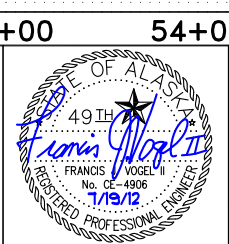
REVISIONS

NO.	DATE	BY	DESCRIPTION
1	6/20/12	FJV	AS CONSTRUCTED



Bristol
 ENVIRONMENTAL & ENGINEERING
 SERVICES CORPORATION
 Phone (907) 563-0013 Fax (907) 563-6713
 Project No. 27098

CITY OF HOMER, ALASKA
 PUBLIC WORKS DEPARTMENT
 3575 HEATH STREET
 HOMER, ALASKA 99603
 PHONE: (907) 235-3170
 FAX: (907) 235-3145



**CITY OF HOMER - KACHEMAK DRIVE
 PHASE II WATER AND SEWER IMPROVEMENTS**

**WATER LINE PLAN & PROFILE
 STA 44+65.00 TO STA 58+00.00**

SCALE: SHOWN DESIGNED: SJW CHECKED: FJV DRAWN: SJW DATE: 08/19/11

SHEET NO.
**C2.0
 03058**
 SHEET 10 OF 38