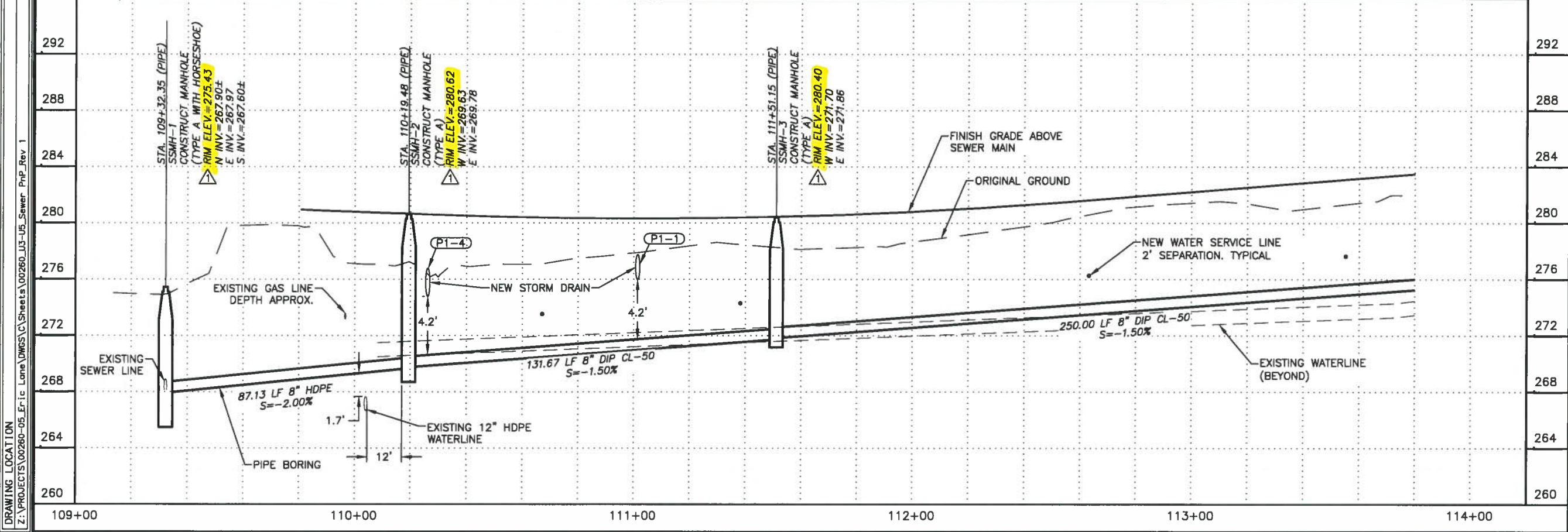
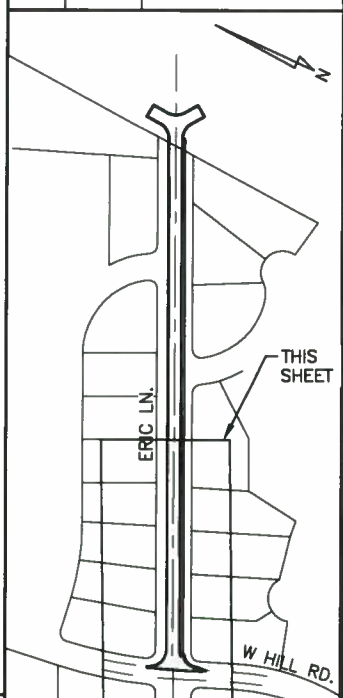


SHEET NO.	TOTAL SHEETS	
U4	U6	
ADDENDUM NO.		
ATTACHMENT NO.		
REVISIONS		
NO.	DATE	DESCRIPTION
1	9/14/16	RIM ELEVATIONS



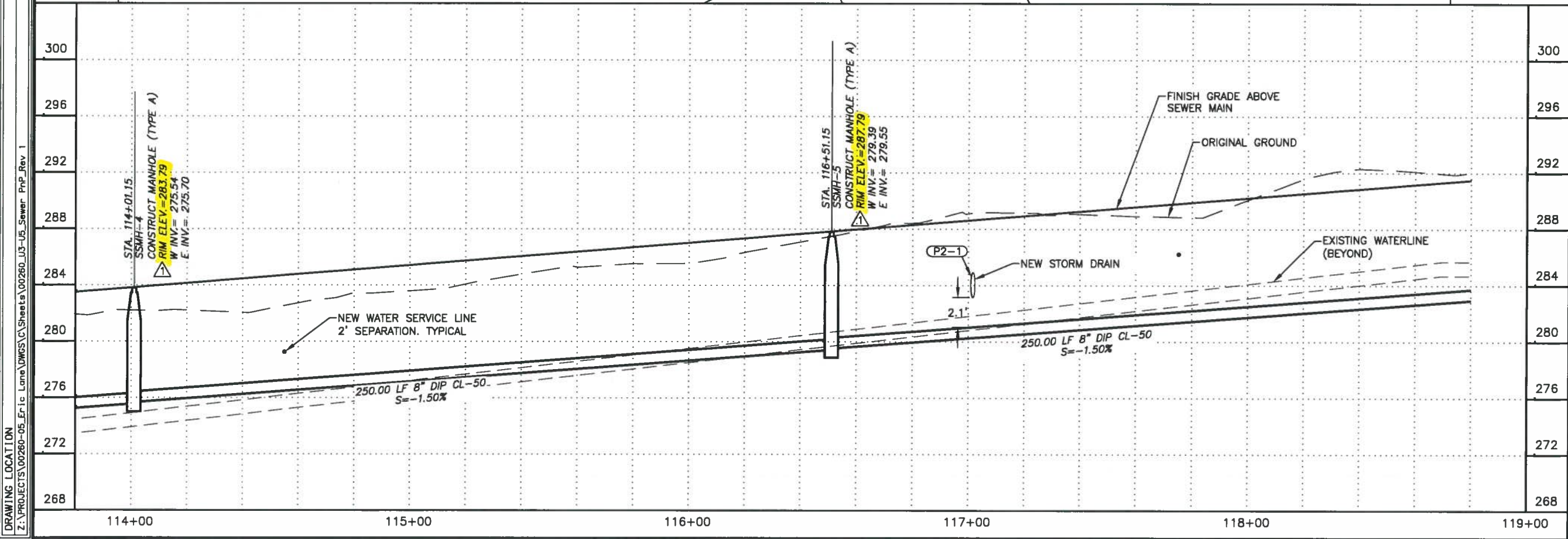
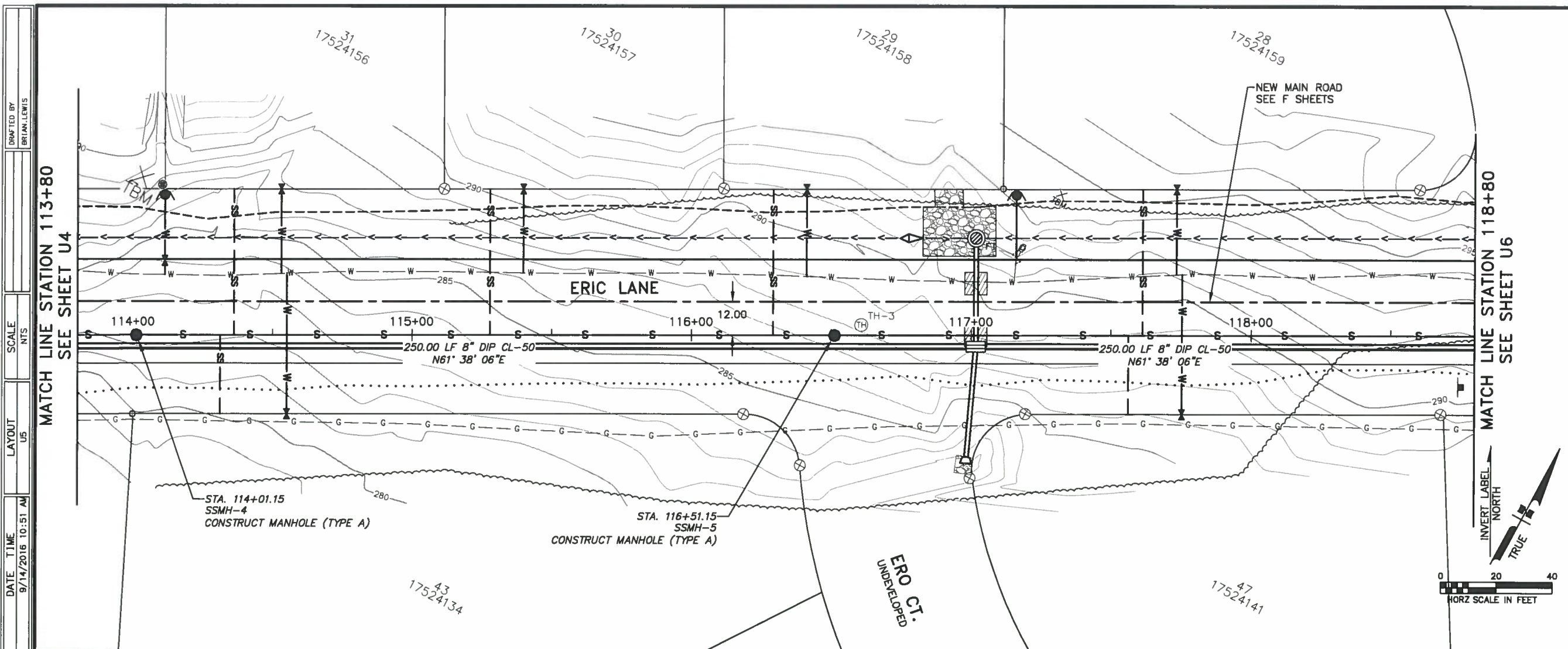
PLANS DEVELOPED BY:
 KINNEY ENGINEERING, LLC
 3908 Arctic Blvd, Suite 400
 Anchorage, Alaska 99503
 (907) 346-2373
 CERT. OF AUTH. NO. AECL 1102

FOR
 CITY OF HOMER, ALASKA
 PUBLIC WORKS DEPARTMENT

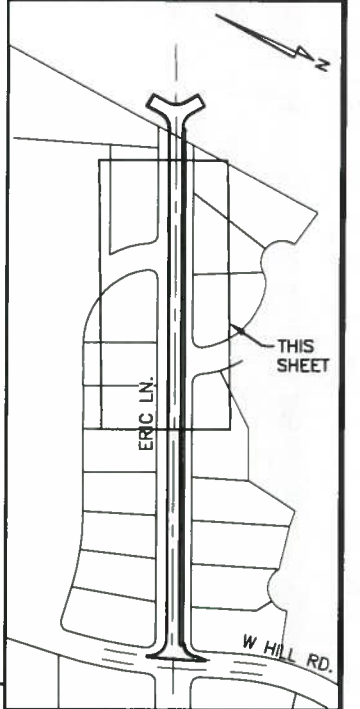
PHONE: (907) 235-3170
 FAX: (907) 235-3145

CITY OF HOMER
 ERIC LANE
 ROAD AND SEWER
 IMPROVEMENTS
 SEWER PLAN AND
 PROFILE

DRAFTED BY: BRIAN LEWIS
 SCALE: NTS
 LAYOUT: U4
 DATE: 9/14/2016 10:51 AM
 DRAWING LOCATION: Z:\PROJECTS\00280-05_Er.Lane\DWG\C\Sheets\00280-U3-U5_Sewer_PnP_Rev 1



SHEET NO.	TOTAL SHEETS	
U5	U6	
ADDENDUM NO.		
ATTACHMENT NO.		
REVISIONS		
NO.	DATE	DESCRIPTION
1	9/14/16	RIM ELEVATIONS




PLANS DEVELOPED BY:
 KINNEY ENGINEERING, LLC
 3909 Arctic Blvd, Suite 400
 Anchorage, Alaska 99503
 (907) 346-2373
 CERT. OF AUTH. NO. AECL 1102

FOR
 CITY OF HOMER, ALASKA
 PUBLIC WORKS DEPARTMENT



PHONE (907) 235 31
 FAX (907) 235 3 45



John B. Pekar
 CE 10591
 Sep 14, 2016
 REGISTERED PROFESSIONAL ENGINEER

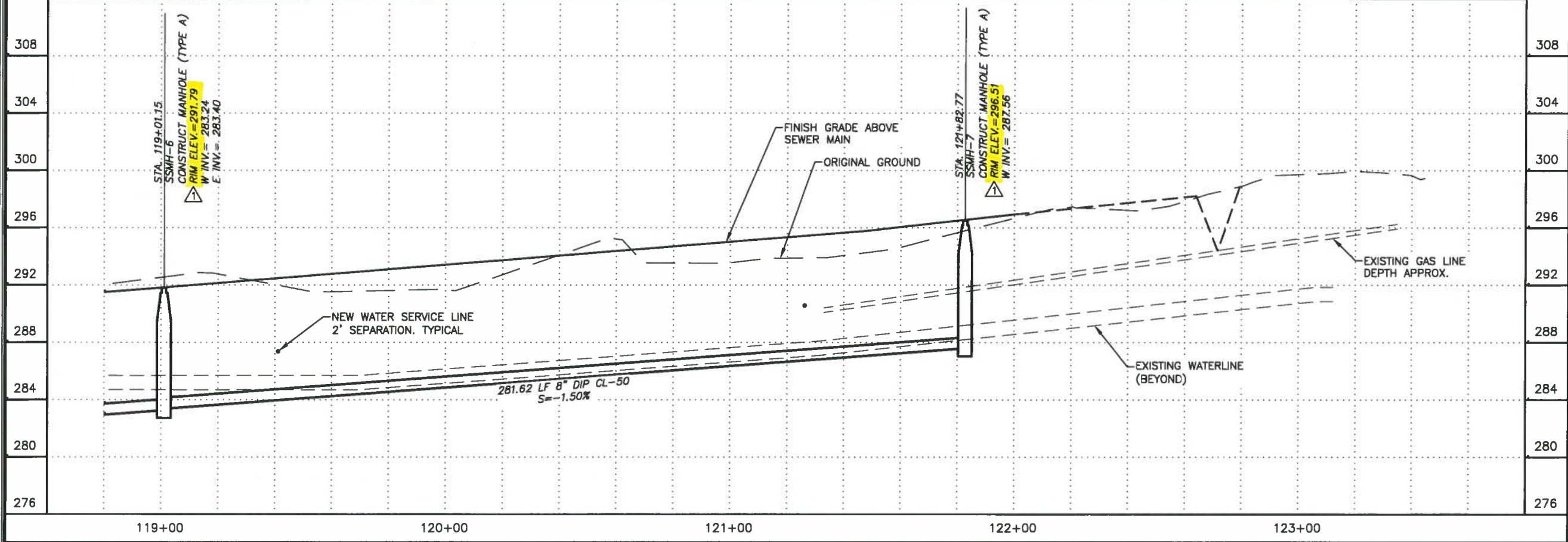
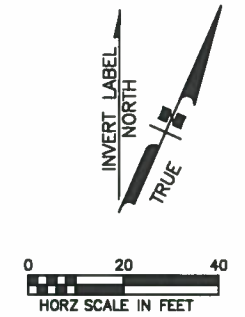
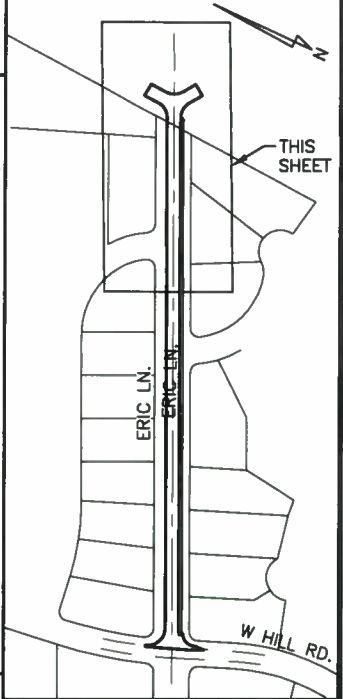
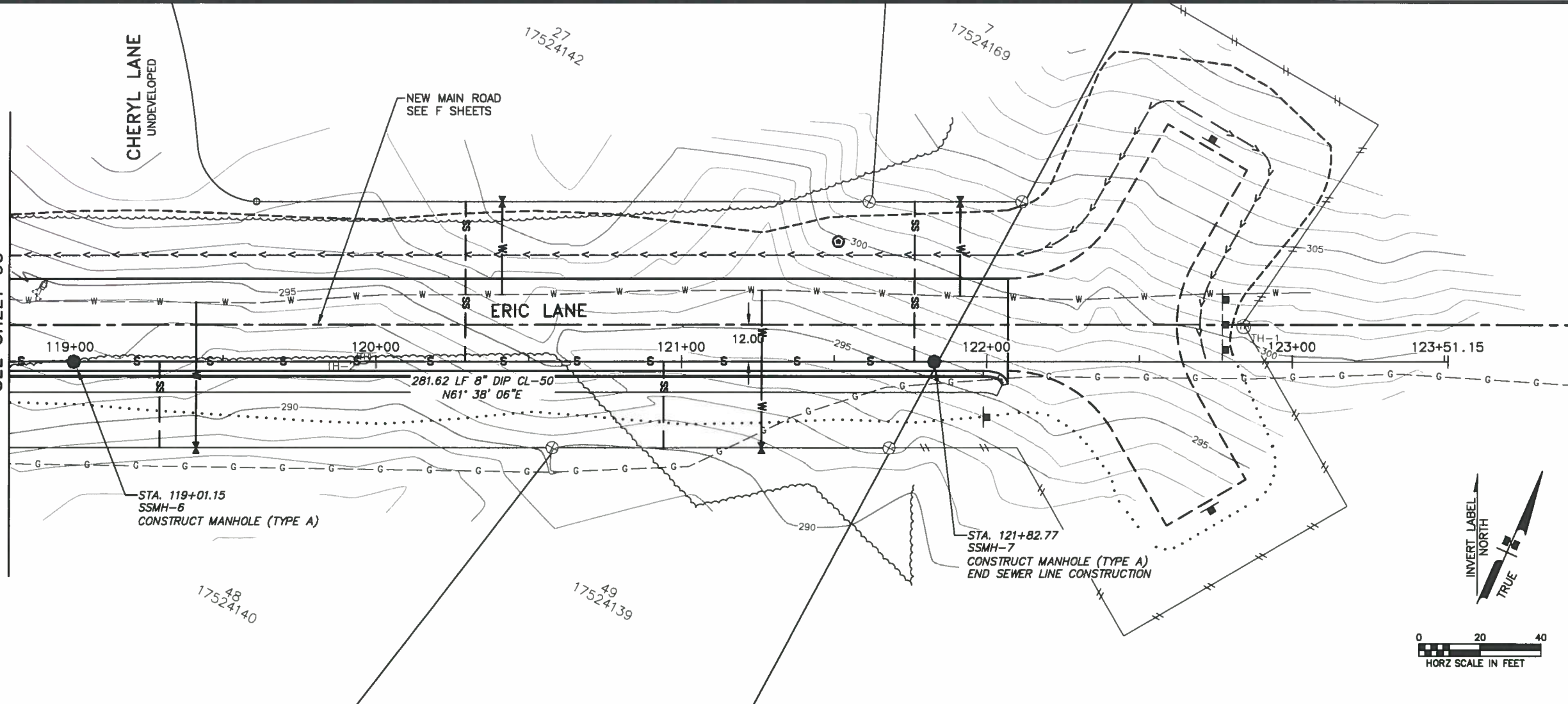
CITY OF HOMER
 ERIC LANE
 ROAD AND SEWER
 IMPROVEMENTS
 SEWER PLAN AND
 PROFILE

DRAFTED BY: BRIAN LEWIS
 SCALE: NTS
 LAYOUT: U5
 DATE: 9/14/2016 10:51 AM
 TIME: 10:51 AM
 DRAWING LOCATION: Z:\PROJECTS\00260-05_Eric Lane\DWG\C_Sheets\00260_U3-U5_Sewer_PnP_Rev.1

DRAFTED BY: BRIAN LEWIS
 SCALE: NTS
 LAYOUT: U6
 DATE: 9/14/2016 10:51 AM
 DATE TIME: 9/14/2016 10:51 AM
 DRAWING LOCATION: Z:\PROJECTS\00260-05_Er.Lane\DWG\C_Sheets\00260-U3-U5_Sewer_PnP_Rev 1

SHEET NO.	TOTAL SHEETS	
U6	U6	
ADDENDUM NO.		
ATTACHMENT NO.		
REVISIONS		
NO.	DATE	DESCRIPTION
1	9/14/16	RIM ELEVATIONS

MATCH LINE STATION 118+80
SEE SHEET U5



PLANS DEVELOPED BY:
 KINNEY ENGINEERING, LLC
 3909 Arctic Blvd, Suite 400
 Anchorage, Alaska 99503
 (907) 346-2373
 CERT. OF AUTH. NO. AECL 1102

FOR
 CITY OF HOMER, ALASKA
 PUBLIC WORKS DEPARTMENT

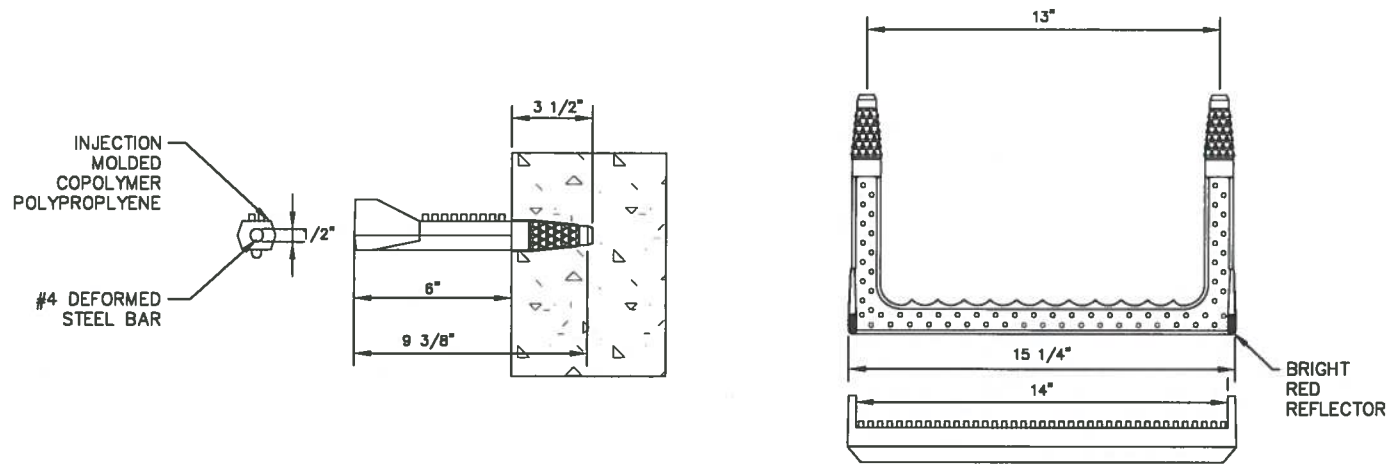


PHONE: (907) 235-3170
 FAX: (907) 235-3145



CITY OF HOMER
 ERIC LANE
 ROAD AND SEWER
 IMPROVEMENTS
 SEWER PLAN AND
 PROFILE

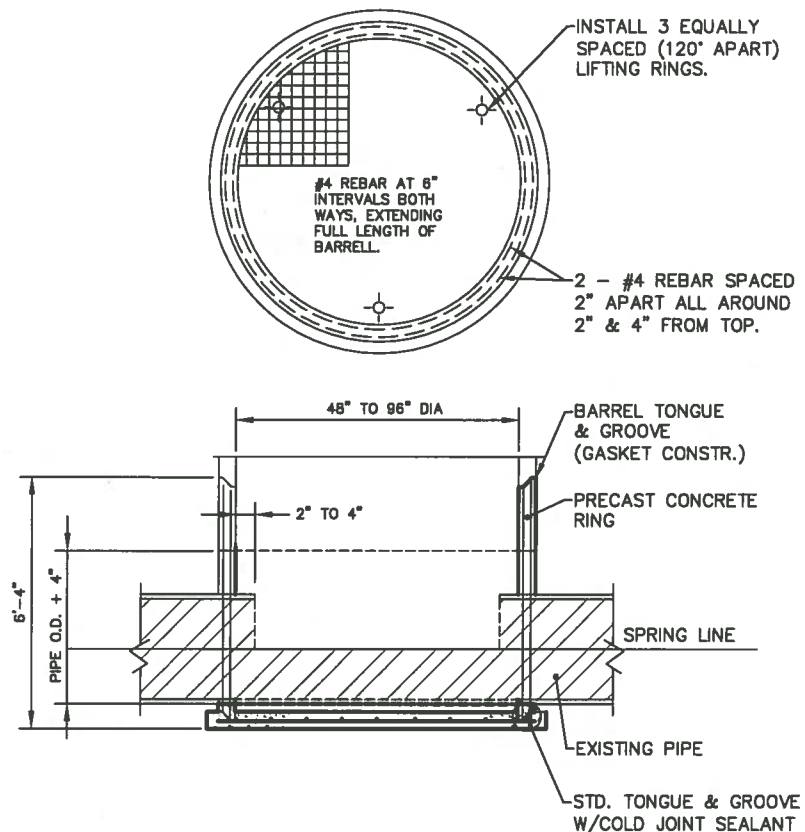
DRAWING LOCATION: \\192.168.0.10\VE-Files\PROJECTS\00260-05_Eric_Lona\DWGS\C_Sheets\00260_U7-U9_SW_DETAILS_REV 1
 DATE TIME: 9/15/2016 9:18 AM
 LAYOUT: UB
 SCALE: NTS
 DRAFTED BY: JOHN PEKAR



NOTES:

1. DRIVE RUNG INTO PREFORMED OR DRILLED HOLES WITH A 6 TO 10 LB. SLEDGE HAMMER, AFTER CONCRETE IS CURED TO 3000 PSI MIN.
2. THE INSTALLED STEP SHALL RESIST A PULLOUT FORCE OF 1500 LBS.

COPOLYMER POLYPROPYLENE MANHOLE STEP

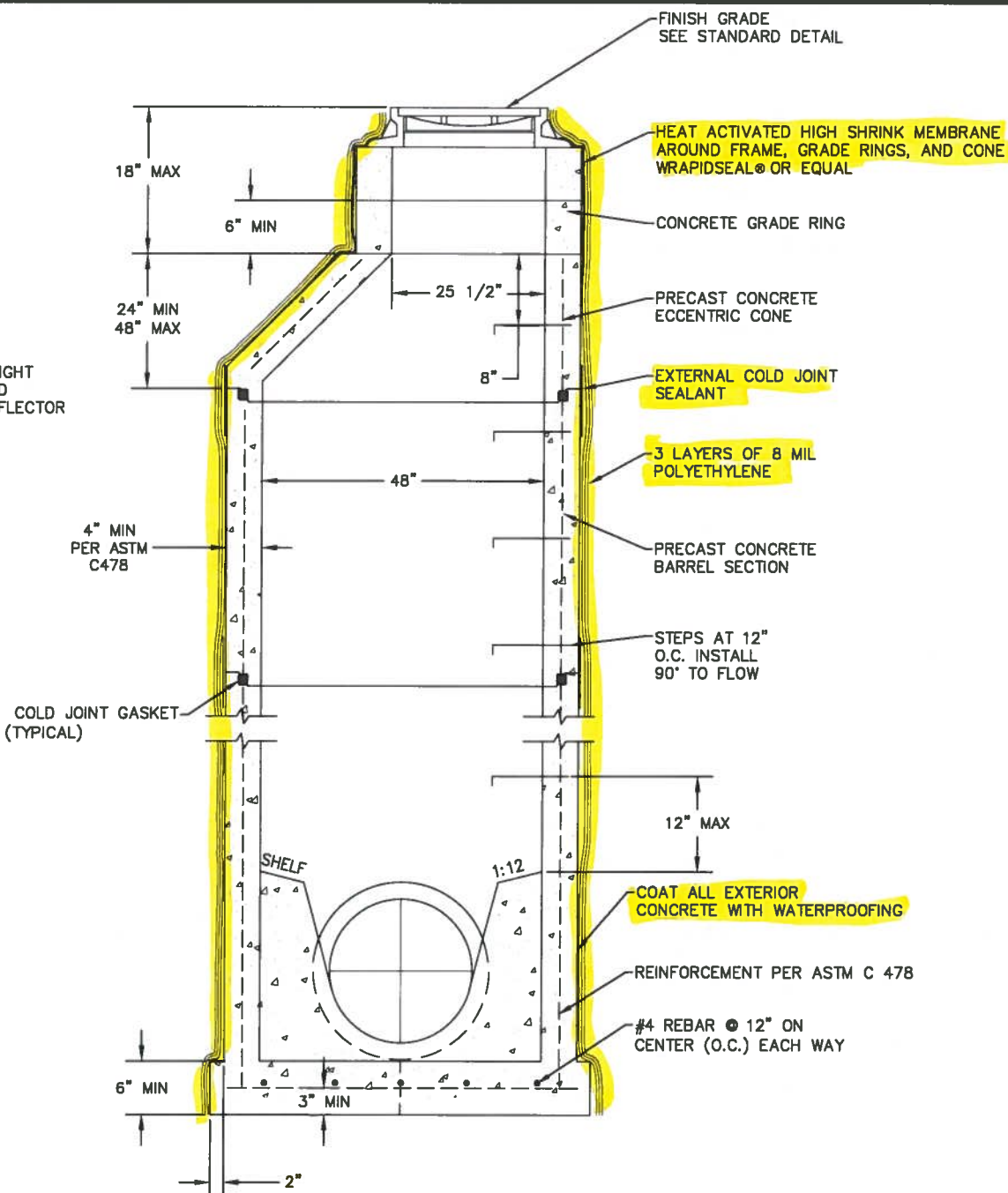


NOTES:

1. NO REBAR TO EXTEND INTO PIPE OPENING.
2. MORTAR PENETRATIONS
3. REFER TO DETAIL 500.01, 500.02, 500.03, 500.07, 500.08, & 500.09 FOR PROPER DIMENSIONS, SEALING, LADDER AND OTHER COMPONENTS.

HORSE SHOE SANITARY SEWER MANHOLE DETAIL

SSMH-1



NOTES:

1. BACKFILL AROUND MANHOLE WITH NFS MATERIAL (3 FT MIN).
2. COATINGS AND WATERPROOFING
 - 2.1. EXTERNAL COLD JOINT SEALANT IS TO BE WRAPIDSEAL (18" WIDE), MANUFACTURED BY CCI PIPELINE SYSTEMS, VISCOTAQ VISCOWRAP (12" WIDE) OR APPROVED EQUAL FOR EXTERNAL JOINT SEALING.
 - 2.2. EXTERIOR BURIED CONCRETE STRUCTURE WATERPROOFING SHALL BE GMX ULTRA-SHIELD WB, TUFF-N-DRI XTS, OR APPROVED EQUAL
 - 2.3. CLEAR OR OPAQUE 8-MIL POLYETHYLENE TUBE OR SHEETING FOR ENCASEMENT.
 - 2.4. COLD JOINT GASKETS ARE TO BE RAM-NEK PREFORMED CONCRETE JOINT SEALANT BY HENRY COMPANY, INC., VISCOTAQ VISCOPASTE (1/2" X 1" PROFILE) OR EQUAL



CONSTRUCT MANHOLE (TYPE A) SANITARY SEWER

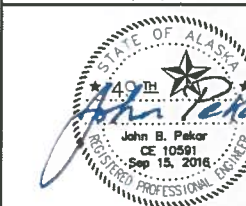
SHEET NO.	TOTAL SHEETS	
U8	29	
ADDENDUM NO.		
ATTACHMENT NO.		
REVISIONS		
NO.	DATE	DESCRIPTION
1	9/15/16	NEW MANHOLE DETAIL

PLANS DEVELOPED BY:
 KINNEY ENGINEERING, LLC
 3909 Arctic Blvd, Suite 400
 Anchorage, Alaska 99503
 (907) 346-2373
 CERT. OF AUTH. NO. AECL 1102

FOR
 CITY OF HOMER, ALASKA
 PUBLIC WORKS DEPARTMENT



PHONE: (907) 235-3170
 FAX: (907) 235-3145



CITY OF HOMER
 ERIC LANE
 ROAD AND SEWER
 IMPROVEMENTS

MANHOLE DETAILS