

SCULPTURE OR SIGN?

EXTERIOR WALL MIRROR?

24

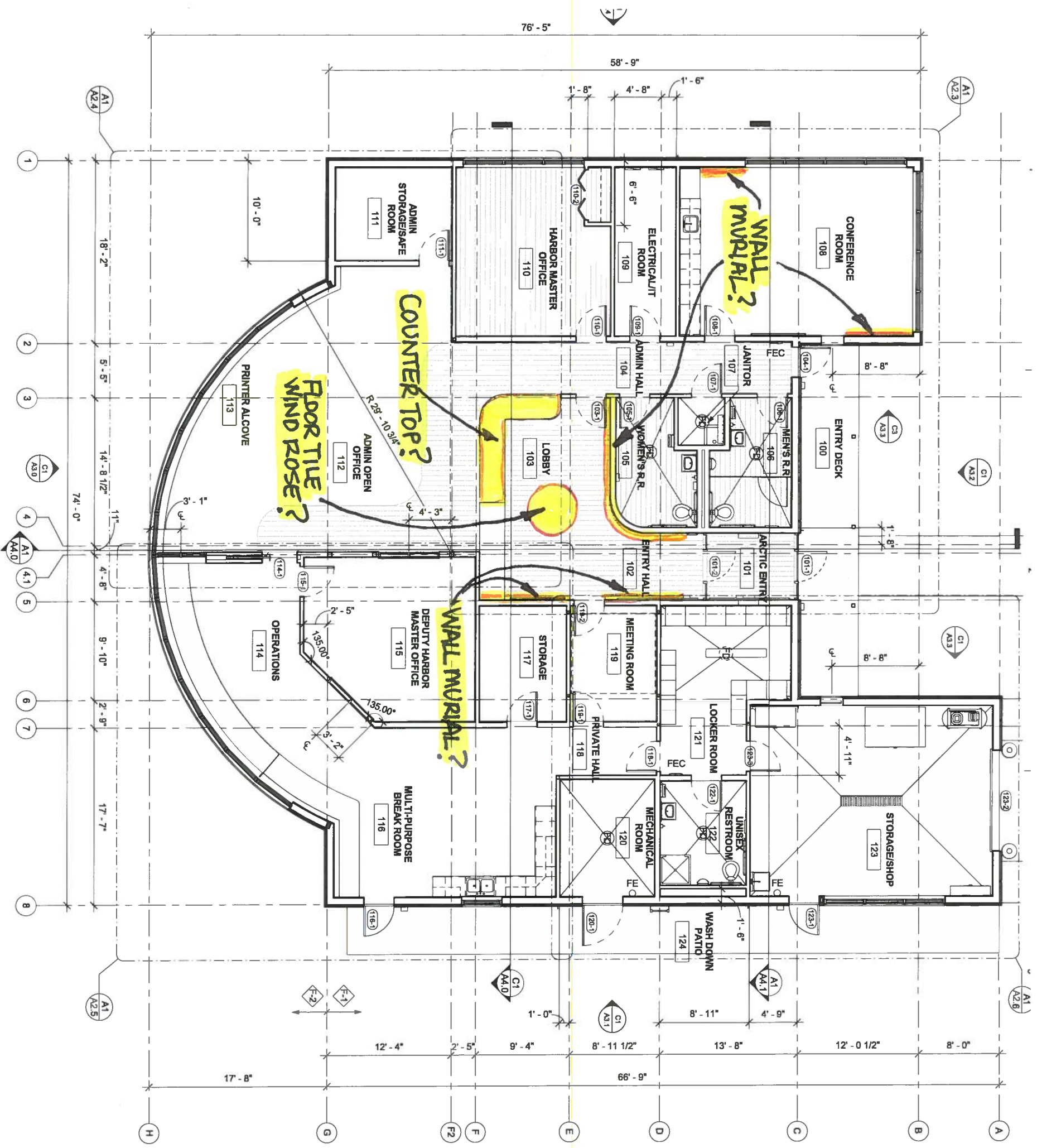
22

21

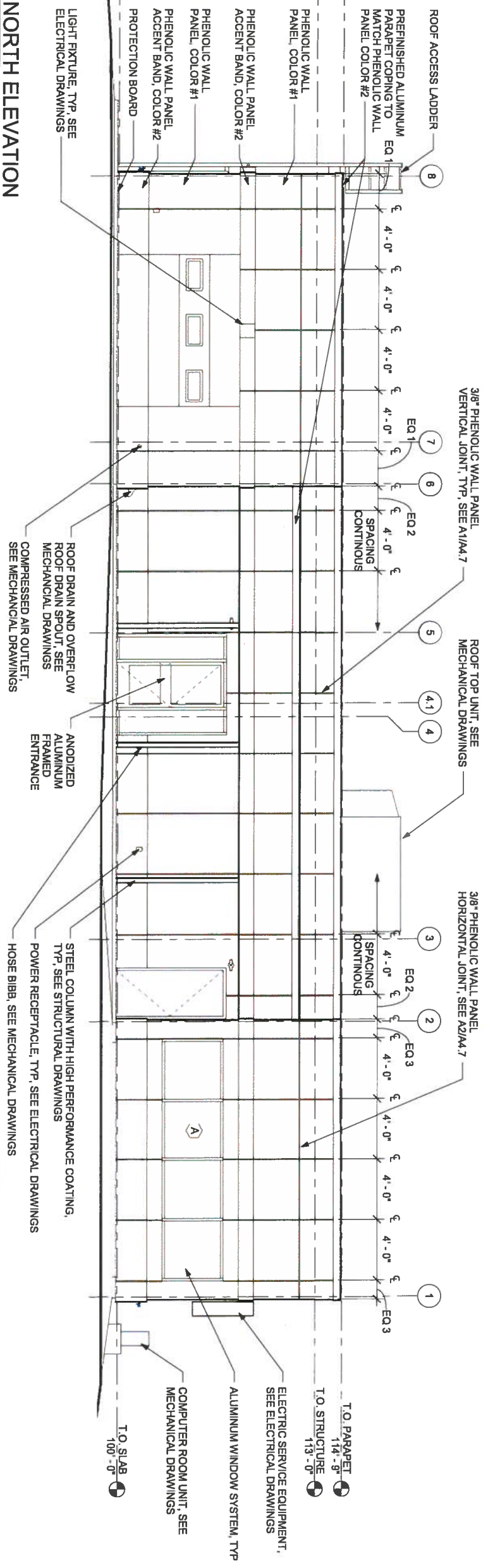
SCALE: 1"=15'



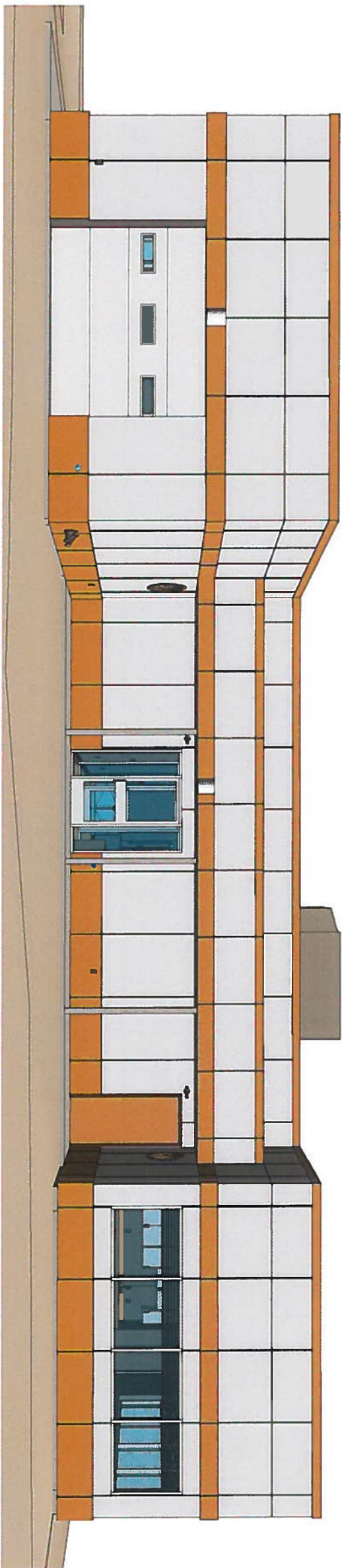
FLOOR PLAN



C1 NORTH ELEVATION
A3.2 1/4" = 1'-0" (22x34), 1/8" = 1'-0" (11x17)



- GENERAL NOTES:
1. SEE SHEET A6.1 FOR WINDOW/RELITE TYPES.
 2. ELEVATION LEVELS ARE FOR REFERENCE ONLY. SEE CIVIL FOR ACTUAL FINISH FLOOR ELEVATION



95% DOCUMENTS
4-15-2014

PROJECT: HOMER HARBOR MASTER'S OFFICE
CITY OF HOMER
491 E. PIONEER AVENUE
HOMER, ALASKA 99603

CLIENT:

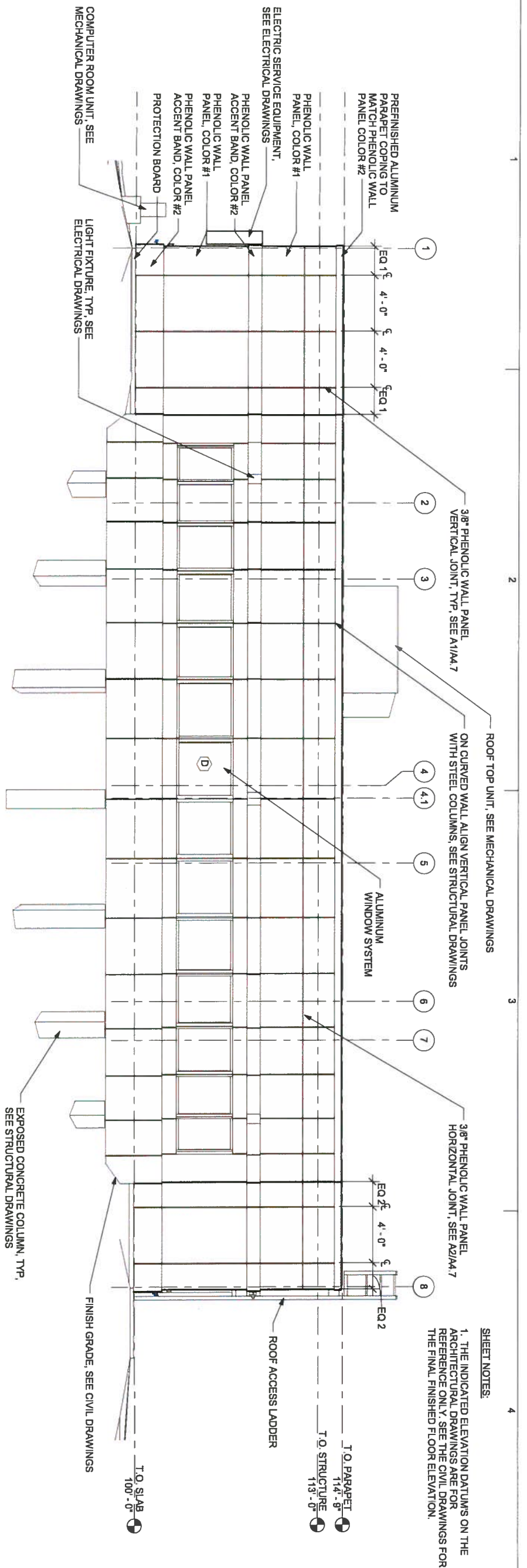
Klauder & Company Architects, Inc.
606 Petersen Way
Kenai, AK 99611
Office: (907) 283-1919 Fax: (907) 283-0450
klauder@alaska.net

DESIGN BY: PK
DRAWN: BC, SY
CHECKED: PK
JOB NO: 1325
DATE: 4-15-2014

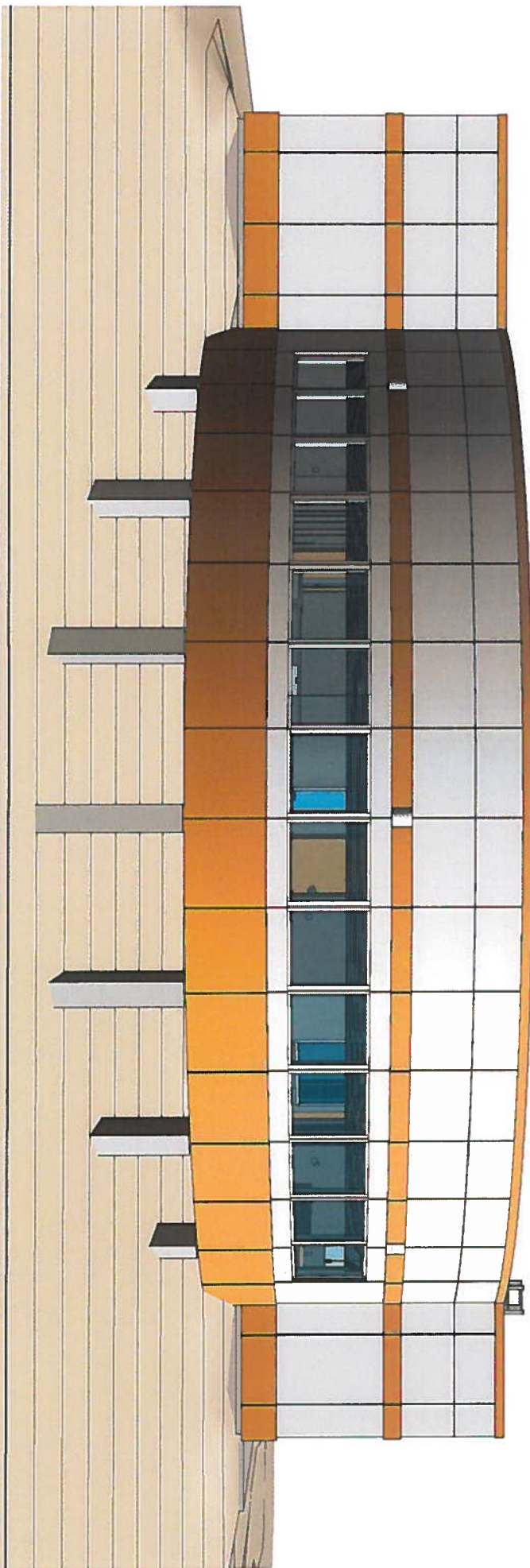
REVISIONS:
NO. DATE

SHEET NUMBER
A3.2

SHEET CONTENTS
NORTH ELEVATION



C1 SOUTH ELEVATION
 A3.0 1/4" = 1'-0" (22x34), 1/8" = 1'-0" (11x17)



SHEET NOTES:
 1. THE INDICATED ELEVATION DATUMS ON THE ARCHITECTURAL DRAWINGS ARE FOR REFERENCE ONLY. SEE THE CIVIL DRAWINGS FOR THE FINAL FINISHED FLOOR ELEVATION.

Klauder & Company Architects, Inc.

606 Petersen Way
 Kenai, AK 99611
 Office: (907) 283-1919 Fax: (907) 283-0450
 klauder@alaska.net

HOMER HARBOR MASTER'S OFFICE

PROJECT:

**CITY OF HOMER
 491 E. PIONEER AVENUE
 HOMER, ALASKA 99603**

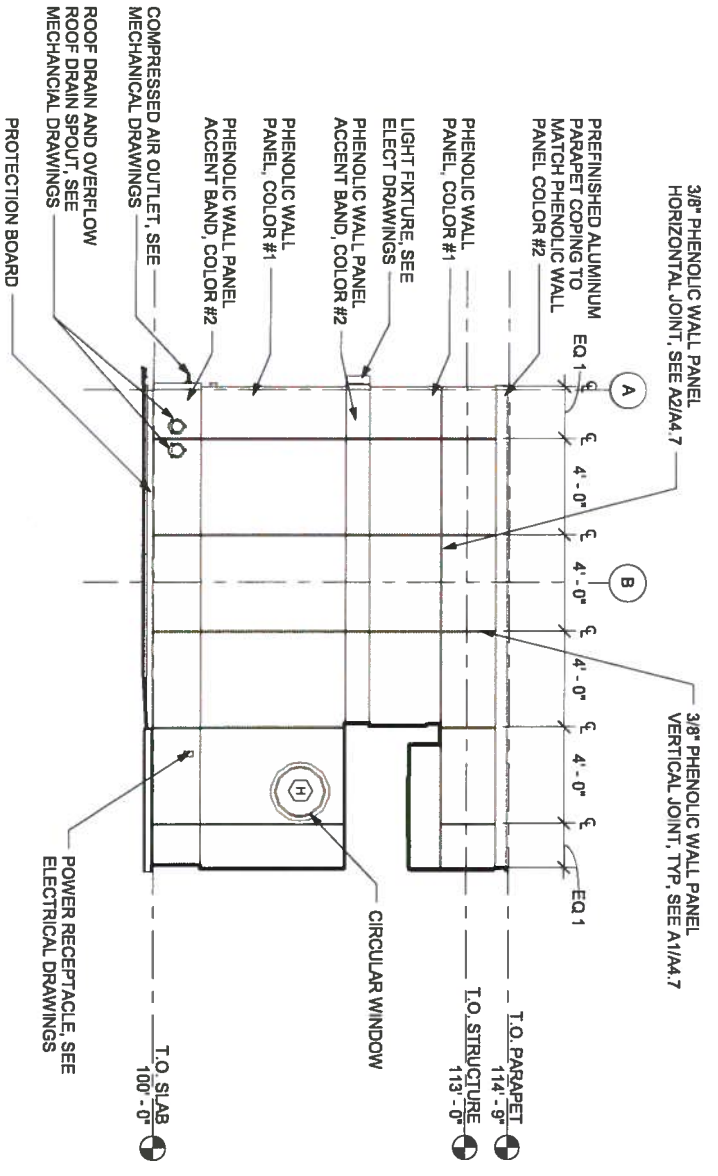
CLIENT:

95% DOCUMENTS
 4-15-2014

SHEET NUMBER
A3.0

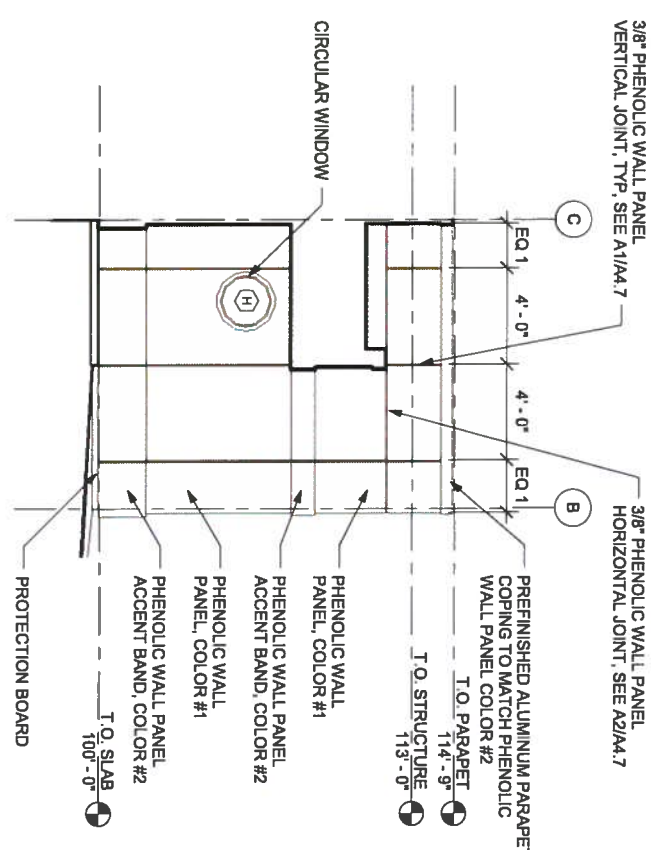
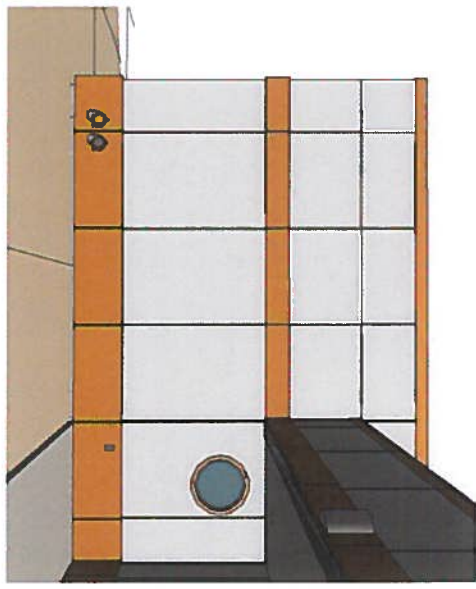
SHEET CONTENTS
 SOUTH ELEVATION

DESIGN BY: PK
 DRAWN: BC, SY
 CHECKED: PK
 JOB NO: 1325
 DATE: 4-15-2014
 REVISIONS:
 NO. DATE



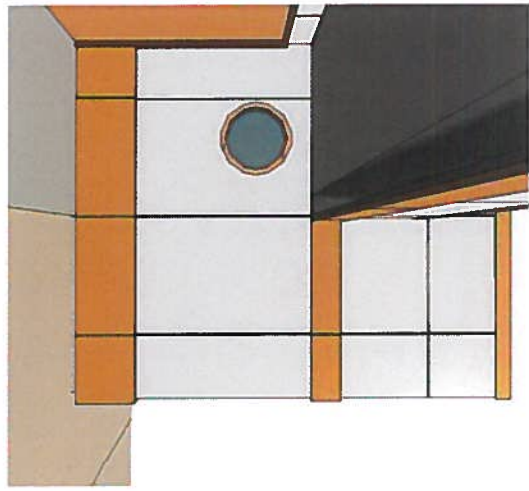
C1 ENTRY DECK ELEVATION EAST

A3.3 1/4" = 1'-0" (22x34); 1/8" = 1'-0" (11x17)



C3 ENTRY DECK ELEVATION WEST

A3.3 1/4" = 1'-0" (22x34); 1/8" = 1'-0" (11x17)



GENERAL NOTES:
 1. SEE SHEET A6.1 FOR WINDOW/RELITE TYPES.
 2. ELEVATION LEVELS ARE FOR REFERENCE ONLY, SEE CIVIL FOR ACTUAL FINISH FLOOR ELEVATION

95% DOCUMENTS
 4-15-2014

PROJECT: HOMER HARBOR MASTER'S OFFICE
 CLIENT: CITY OF HOMER
 491 E. PIONEER AVENUE
 HOMER, ALASKA 99603

Klauder & Company Architects, Inc.
 606 Petersen Way
 Kenai, AK 99611
 Office: (907) 283-1919 Fax: (907) 283-0450
 klauder@alaska.net

DESIGN BY: PK
 DRAWN: BC, SY
 CHECKED: PK
 JOB NO: 1325
 DATE: 4-15-2014
 REVISIONS:
 NO. DATE

SHEET NUMBER
A3.3
 SHEET CONTENTS
 ENTRY DECK
 ELEVATIONS