

ADDENDUM NO. #1

Project: Homer A-Frame PRV Replacement
Addendum Issue Date: May 10, 2019
Bid Date: June 6, 2019 @ 2:00 PM (Thursday)
Previous Addenda Issued: None
Issued By: Carey Meyer
City Engineer - City of Homer
Homer, AK 99603
cmeyer@ci.homer.ak.us

Bidders must acknowledge receipt of this addendum prior to the date set for bid opening by one of the following methods:

- (1) By acknowledging receipt of this addendum in the bid submitted (**use addendum acknowledgement form provided in bid documents**).
- (2) By facsimile (fax) or email which will need to include a reference to the project and each of the addendum numbers.

The bid documents require acknowledgement individually of all addenda to the drawings and/or specifications. This is a mandatory requirement and any bid received without acknowledgment of receipt of addenda may cause the bid to be considered non-responsive.

ITEM 1 – Federal Wage Rates – Replace federal wage rates shown in bid document with attached superseded General Decision AK190001 4-19-19 AK1

ITEM 2 – Pipe/Fitting Interior/Exterior Coating Requirements? – The pressure reducing valves and the gate valves shown on drawings C2.3 – C2.5 shall be epoxy coated. Piping and fittings are not required to be coated.

ITEM 3 – Revised Bid Schedule – Attached is a revised Bid Schedule, modified to include an Additive bid item “Delete T1-11 Exterior Siding and Provide Lap-Board Composite Cement Siding”. See attached detail for lap-board installation requirements. Include cost of T1-11 siding in base bid item.

ITEM 4 – Valves/Pipe In Building Salvaged by City? – The City will remove existing SCADA electrical panel; existing pressure reducing valves and gate valves; and electrical conduit/copper pipe stored on racks/on floor prior to Contractor beginning demolition work.

ITEM 5 – Foxx Blocks? – The Contractor may elect to use Foxx Block (or equal) modular forms to construct the below grade concrete stem walls.

END ADDENDUM #1

General Decision Number: AK190001 04/19/2019 AK1

Superseded General Decision Number: AK20180001

State: Alaska

Construction Types: Building and Heavy

Counties: Alaska Statewide.

BUILDING AND HEAVY CONSTRUCTION PROJECTS (does not include residential construction consisting of single family homes and apartments up to and including 4 stories)

Note: Under Executive Order (EO) 13658, an hourly minimum wage of \$10.60 for calendar year 2019 applies to all contracts subject to the Davis-Bacon Act for which the contract is awarded (and any solicitation was issued) on or after January 1, 2015. If this contract is covered by the EO, the contractor must pay all workers in any classification listed on this wage determination at least \$10.60 per hour (or the applicable wage rate listed on this wage determination, if it is higher) for all hours spent performing on the contract in calendar year 2019. If this contract is covered by the EO and a classification considered necessary for performance of work on the contract does not appear on this wage determination, the contractor must pay workers in that classification at least the wage rate determined through the conformance process set forth in 29 CFR 5.5(a)(1)(ii) (or the EO minimum wage rate, if it is higher than the conformed wage rate). The EO minimum wage rate will be adjusted annually. Please note that this EO applies to the above-mentioned types of contracts entered into by the federal government that are subject to the Davis-Bacon Act itself, but it does not apply to contracts subject only to the Davis-Bacon Related Acts, including those set forth at 29 CFR 5.1(a)(2)-(60). Additional information on contractor requirements and worker protections under the EO is available at www.dol.gov/whd/govcontracts.

Modification Number	Publication Date
0	01/04/2019
1	01/11/2019
2	01/18/2019
3	02/22/2019
4	03/01/2019
5	03/29/2019
6	03/29/2019
7	04/12/2019
8	04/19/2019

ASBE0097-001 01/01/2018

Rates

Fringes

Asbestos Workers/Insulator
(includes application of all

insulating materials protective coverings, coatings and finishings to all types of mechanical systems).....	\$ 38.68	21.57
HAZARDOUS MATERIAL HANDLER (includes preparation, wetting, stripping, removal scrapping, vacuming, bagging, and disposing of all insulation materials, whether they contain asbestos or not, from mechanical systems).....	\$ 37.38	19.55

BOIL0502-002 10/01/2017

	Rates	Fringes
BOILERMAKER.....	\$ 46.17	29.70

BRAK0001-002 07/01/2018

	Rates	Fringes
Bricklayer, Blocklayer, Stonemason, Marble Mason, Tile Setter, Terrazzo Worker.....	\$ 40.81	19.77
Tile & Terrazzo Finisher.....	\$ 34.79	19.62

CARP1501-001 09/01/2016

	Rates	Fringes
MILLWRIGHT.....	\$ 36.74	22.99

CARP2520-003 09/01/2018

	Rates	Fringes
Diver		
Stand-by.....	\$ 42.65	25.66
Tender.....	\$ 41.65	25.66
Working.....	\$ 82.45	25.66
Piledriver		
Piledriver; Skiff Operator and Rigger.....	\$ 38.34	25.66
Sheet Stabber.....	\$ 38.34	25.66
Welder.....	\$ 43.90	25.66

DEPTH PAY PREMIUM FOR DIVERS BELOW WATER SURFACE:

50-100 feet	\$1.00 per foot
101 feet and deeper	\$2.00 per foot

ENCLOSURE PAY PREMIUM WITH NO VERTICAL ASCENT:

5-50 FEET	\$1.00 PER FOOT/DAY
51-100 FEET	\$2.00 PER FOOT/DAY
101 FEET AND ABOVE	\$3.00 PER FOOT/DAY

SATURATION DIVING:

The standby rate applies until saturation starts. The saturation diving rate applies when divers are under pressure continuously until work task and decompression are complete. the diver rate shall be paid for all saturation hours.

WORK IN COMBINATION OF CLASSIFICATIONS:

Employees working in any combination of classifications within the diving crew (except dive supervisor) in a shift are paid in the classification with the highest rate for that shift.

CARP4059-001 09/01/2018

	Rates	Fringes
CARPENTER		
Including Lather and Drywall Hanging.....	\$ 38.34	25.66

ELEC1547-004 04/01/2018

	Rates	Fringes
CABLE SPLICER.....	\$ 39.82	3%+\$26.44
ELECTRICIAN.....	\$ 39.49	3%+\$26.69

ELEC1547-005 04/01/2019

Line Construction

	Rates	Fringes
CABLE SPLICER.....	\$ 56.05	3%+31.78
Linemen (Including Equipment Operators, Technician).....	\$ 54.30	3%+31.78
Powderman.....	\$ 52.30	3%+31.78
TREE TRIMMER.....	\$ 36.21	3%+25.19

ELEV0019-002 01/01/2019

	Rates	Fringes
ELEVATOR MECHANIC.....	\$ 57.23	33.705+a+b

FOOTNOTE: a. Employer contributes 8% of the basic hourly rate for over 5 year's service and 6% of the basic hourly rate for 6 months to 5 years' of service as vacation paid credit. b. Eight paid holidays: New Year's Day; Memorial Day; Independence Day; Labor Day; Veteran's Day; Thanksgiving Day; Friday after Thanksgiving, and Christmas Day

ENGI0302-002 01/01/2019

	Rates	Fringes
POWER EQUIPMENT OPERATOR		
GROUP 1.....	\$ 40.53	23.65
GROUP 1A.....	\$ 42.29	23.65
GROUP 2.....	\$ 39.76	23.65
GROUP 3.....	\$ 39.04	23.65
GROUP 4.....	\$ 32.83	23.65
TUNNEL WORK		
GROUP 1.....	\$ 44.58	23.65
GROUP 1A.....	\$ 46.52	23.65
GROUP 2.....	\$ 43.74	23.65
GROUP 3.....	\$ 42.94	23.65
GROUP 4.....	\$ 36.11	23.65

POWER EQUIPMENT OPERATOR CLASSIFICATIONS

GROUP 1: Asphalt Roller: Breakdown, Intermediate, and Finish; Back Filler; Barrier Machine (Zipper); Beltcrete with power pack and similar conveyors; Bending Machine; Boat Coxwains; Bulldozers; Cableways, Highlines and Cablecars; Cleaning Machine; Coating Machine; Concrete Hydro Blaster; Cranes-45 tons and under or 150 foot boom and under (including jib and attachments): (a) Hydralifts or Transporters, all track or truck type,(b) Derricks; Crushers; Deck Winches-Double Drum; Ditching or Trenching Machine (16 inch or over); Drilling Machines, core, cable, rotary and exploration; Finishing Machine Operator, Concrete Paving, Laser Screed, Sidewalk, Curb and Gutter Machine; Helicopters; Hover Craft, Flex Craft, Loadmaster, Air Cushion, All Terrain Vehicle, Rollagon, Bargecable, Nodwell, and Snow Cat; Hydro Ax: Feller Buncher and similar; Loaders (2 1/2 yards through 5 yards, including all attachments): Forklifts with telescopic boom and swing attachment, Overhead and front end, 2 1/2 yards through 5 yards, Loaders with forks or pipe clamps; Loaders, elevating belt type, Euclid and similar types; Mechanics, Bodyman; Micro Tunneling Machine; Mixers: Mobile type w/hoist combination; Motor Patrol Grader; Mucking Machines: Mole, Tunnel Drill, Horizontal/Directional Drill Operator, and/or Shield; Operator on Dredges; Piledriver Engineers, L. B. Foster, Puller or similar Paving Breaker; Power Plant, Turbine Operator, 200 k.w. and over (power plants or combination of power units over 300 k.w.); Scrapers-through 40 yards; Service Oiler/Service Engineer; Sidebooms-under 45 tons; Shot Blast Machine; Shovels, Backhoes, Excavators with all attachments, and Gradealls (3 yards and under), Spreaders, Blaw Knox, Cedarapids, Barber Greene, Slurry Machine; Sub-grader (Gurries, Reclaimer, and similar types); Tack tractor; Truck mounted Concrete Pumps, Conveyor, Creter; Water Kote Machine; Unlicensed off road hauler

GROUP 1A: Camera/Tool/Video Operator (Slipline), Cranes-over 45 tons or 150 foot (including jib and attachments): (a) Clamshells and Draglines (over 3 yards), (b) Tower cranes; Licensed Water/Waste Water Treatment Operator; Loaders over 5 yds.; Certified Welder, Electrical

Mechanic, Camp Maintenance Engineer, Mechanic (over 10,000 hours); Motor Patrol Grader, Dozer, Grade Tractor, Roto-mill/Profiler (finish: when finishing to final grade and/or to hubs, or for asphalt); Power Plants: 1000 k.w. and over; Quad; Screed; Shovels, Backhoes, Excavators with all attachments (over 3 yards), Sidebooms over 45 tons; Slip Form Paver, C.M.I. and similar types; Scrapers over 40 yards;

GROUP 2: Boiler-fireman; Cement Hog and Concrete Pump Operator; Conveyors (except as listed in group 1); Hoist on steel erection; Towermobiles and Air Tuggers; Horizontal/Directional Drill Locator; Licensed Grade Technician; Loaders, (i.e., Elevating Grader and Material Transfer Vehicle); Locomotives: rod and geared engines; Mixers; Screening, Washing Plant; Sideboom (cradling rock drill regardless of size); Skidder; Trenching Machine under 16 inches; Waste/ Waste Water Treatment Operator.

GROUP 3: "A" Frame Trucks, Deck Winches: single power drum; Bombardier (tack or tow rig); Boring Machine; Brooms-power; Bump Cutter; Compressor; Farm tractor; Forklift, industrial type; Gin Truck or Winch Truck with poles when used for hoisting; Grade Checker and Stake Hopper; Hoist, Air Tuggers, Elevators; Loaders: (a) Elevating-Atthey, Barber Green and similar types (b) Forklifts or Lumber Carrier (on construction job site) (c) Forklifts with Tower (d) Overhead and Front-end, under 2 1/2 yds. Locomotives: Dinkey (air, steam, gas and electric) Speeders; Mechanics (light duty); Oil, Blower Distribution; Post Hole Diggers, mechanical; Pot Fireman (power agitated); Power Plant, Turbine Operator, under 200 k.w.; Pumps-water; Roller-other than Plantmix; Saws, concrete; Skid Steer with all attachments; Straightening Machine; Tow Tractor

GROUP 4: Rig Oiler/Crane Assistant Engineer; Parts and Equipment Coordinator; Swamper (on trenching machines or shovel type equipment); Spotter; Steam Cleaner; Drill Helper.

FOOTNOTE: Groups 1-4 receive 10% premium while performing tunnel or underground work. Rig Oiler/Crane Assistant Engineer shall be required on cranes over 85 tons or over 100 feet of boom.

 IRON0751-003 07/01/2018

	Rates	Fringes
IRONWORKER		
BRIDGE, STRUCTURAL,		
ORNAMENTAL, REINFORCING		
MACHINERY MOVER, RIGGER,		
SHEETER, STAGE RIGGER,		
BENDER OPERATOR.....	\$ 37.90	31.48
FENCE, BARRIER INSTALLER....	\$ 34.40	31.48
GUARDRAIL INSTALLERS.....	\$ 35.14	31.48

GUARDRAIL LAYOUT MAN.....	\$ 35.14	31.48
HELICOPTER, TOWER.....	\$ 38.90	31.48

LABO0341-005 04/01/2018

	Rates	Fringes
Laborers: South of the 63rd Parallel & West of Longitude 138 Degrees		
GROUP 1.....	\$ 30.26	27.01
GROUP 2.....	\$ 31.26	27.01
GROUP 3.....	\$ 32.16	27.01
GROUP 3A.....	\$ 35.44	27.01
GROUP 3B.....	\$ 39.98	24.30
GROUP 4.....	\$ 19.83	27.01
TUNNELS, SHAFTS, AND RAISES		
GROUP 1.....	\$ 33.29	27.01
GROUP 2.....	\$ 34.39	27.01
GROUP 3.....	\$ 35.38	27.01
GROUP 3A.....	\$ 38.98	27.01
GROUP 3B.....	\$ 42.88	24.30

LABORERS CLASSIFICATIONS

GROUP 1: Asphalt Workers (shovelman, plant crew); Brush Cutters; Camp Maintenance Laborer; Carpenter Tenders; Choke Setters, Hook Tender, Rigger, Signalmen; Concrete Laborer (curb and gutter, chute handler, grouting, curing, screeding); Crusher Plant Laborer; Demolition Laborer; Ditch Diggers; Dump Man; Environmental Laborer (asbestos (limited to nonmechanical systems), hazardous and toxic waste, oil spill); Fence Installer; Fire Watch Laborer; Flagman; Form Strippers; General Laborer; Guardrail Laborer, Bridge Rail Installers; Hydro-Seeder Nozzleman; Laborers (building); Landscape or Planter; Laying of Decorative Block (retaining walls, flowered decorative block 4 feet and below); Material Handlers; Pneumatic or Power Tools; Portable or Chemical Toilet Serviceman; Pump Man or Mixer Man; Railroad Track Laborer; Sandblast, Pot Tender; Saw Tenders; Scaffold Building and Erecting; Slurry Work; Stake Hopper; Steam Point or Water Jet Operator; Steam Cleaner Operator; Tank Cleaning; Utiliwalk, Utilidor Laborer and Conduit Installer; Watchman (construction projects); Window Cleaner

GROUP 2: Burning and Cutting Torch; Cement or Lime Dumper or Handler (sack or bulk); Choker Splicer; Chucktender (wagon, airtrack and hydraulic drills); Concrete Laborers (power buggy, concrete saws, pumpcrete nozzleman, vibrator man); Culvert Pipe Laborer; Cured in place Pipelayer; Environmental Laborer (marine work, oil spill skimmer operator, small boat operator); Foam Gun or Foam Machine Operator; Green Cutter (dam work); Gunnite Operator; Hod Carriers; Jackhammer or Pavement Breakers (more than 45 pounds); Laying of Decorative Block (retaining walls, flowered decorative block above 4 feet); Mason Tender and Mud Mixer (sewer work); Pilot Car; Plasterer, Bricklayer

and Cement Finisher Tenders; Power Saw Operator; Railroad Switch Layout Laborer; Sandblaster; Sewer Caulkers; Sewer Plant Maintenance Man; Thermal Plastic Applicator; Timber Faller, chain saw operator, filer; Timberman

GROUP 3: Alarm Installer; Bit Grinder; Guardrail Machine Operator; High Rigger and tree topper; High Scaler; Multiplate; Slurry Seal Squeegee Man

GROUP 3A: Asphalt Raker, Asphalt Belly dump lay down; Drill Doctor (in the field); Drillers (including, but not limited to, wagon drills, air track drills; hydraulic drills); Powderman; Pioneer Drilling and Drilling Off Tugger (all type drills); Pipelayers

GROUP 3B: Grade checker (setting or transferring of grade marks, line and grade)

GROUP 4: Final Building Cleanup

TUNNELS, SHAFTS, AND RAISES CLASSIFICATIONS

GROUP 1: Brakeman; Muckers; Nippers; Topman and Bull Gang; Tunnel Track Laborer

GROUP 2: Burning and Cutting Torch; Concrete Laborers; Jackhammers; Nozzleman, Pumpcrete or Shotcrete.

GROUP 3: Miner; Retimberman

GROUP 3A: Asphalt Raker, Asphalt Belly dump lay down; Drill Doctor (in the field); Drillers (including, but not limited to, wagon drills, air track drills; hydraulic drills); Powderman; Pioneer Drilling and Drilling Off Tugger (all type drills); Pipelayers.

GROUP 3B: Grade checker (setting or transferring of grade marks, line and grade)

Tunnel shaft and raise rates only apply to workers regularly employed inside a tunnel portal or shaft collar.

LAB00942-001 04/01/2018

	Rates	Fringes
Laborers: North of the 63rd Parallel & East of Longitude 138 Degrees		
GROUP 1.....	\$ 30.26	27.21
GROUP 2.....	\$ 31.26	27.21
GROUP 3.....	\$ 32.16	27.21
GROUP 3A.....	\$ 35.44	27.21
GROUP 3B.....	\$ 38.98	24.50
GROUP 4.....	\$ 19.83	27.21
TUNNELS, SHAFTS, AND RAISES		
GROUP 1.....	\$ 33.29	27.21

GROUP 2.....	\$ 34.39	27.21
GROUP 3.....	\$ 35.38	27.21
GROUP 3A.....	\$ 38.98	27.21
GROUP 3B.....	\$ 42.88	24.50

LABORERS CLASSIFICATIONS

GROUP 1: Asphalt Workers (shovelman, plant crew); Brush Cutters; Camp Maintenance Laborer; Carpenter Tenders; Choke Setters, Hook Tender, Rigger, Signalman; Concrete Laborer (curb and gutter, chute handler, grouting, curing, screeding); Crusher Plant Laborer; Demolition Laborer; Ditch Diggers; Dump Man; Environmental Laborer (asbestos (limited to nonmechanical systems), hazardous and toxic waste, oil spill); Fence Installer; Fire Watch Laborer; Flagman; Form Strippers; General Laborer; Guardrail Laborer, Bridge Rail Installers; Hydro-Seeder Nozzleman; Laborers (building); Landscape or Planter; Laying of Decorative Block (retaining walls, flowered decorative block 4 feet and below); Material Handlers; Pneumatic or Power Tools; Portable or Chemical Toilet Serviceman; Pump Man or Mixer Man; Railroad Track Laborer; Sandblast, Pot Tender; Saw Tenders; Scaffold Building and Erecting; Slurry Work; Stake Hopper; Steam Point or Water Jet Operator; Steam Cleaner Operator; Tank Cleaning; Utiliwalk, Utilidor Laborer and Conduit Installer; Watchman (construction projects); Window Cleaner

GROUP 2: Burning and Cutting Torch; Cement or Lime Dumper or Handler (sack or bulk); Choker Splicer; Chucktender (wagon, airtrack and hydraulic drills); Concrete Laborers (power buggy, concrete saws, pumpcrete nozzleman, vibratorman); Culvert Pipe Laborer; Cured in place Pipelayer; Environmental Laborer (marine work, oil spill skimmer operator, small boat operator); Foam Gun or Foam Machine Operator; Green Cutter (dam work); Gunnite Operator; Hod Carriers; Jackhammer or Pavement Breakers (more than 45 pounds); Laying of Decorative Block (retaining walls, flowered decorative block above 4 feet); Mason Tender and Mud Mixer (sewer work); Pilot Car; Plasterer, Bricklayer and Cement Finisher Tenders; Power Saw Operator; Railroad Switch Layout Laborer; Sandblaster; Sewer Caulkers; Sewer Plant Maintenance Man; Thermal Plastic Applicator; Timber Faller, chain saw operator, filer; Timberman

GROUP 3: Alarm Installer; Bit Grinder; Guardrail Machine Operator; High Rigger and tree topper; High Scaler; Multiplate; Slurry Seal Squeegee Man

GROUP 3A: Asphalt Raker, Asphalt Belly dump lay down; Drill Doctor (in the field); Drillers (including, but not limited to, wagon drills, air track drills; hydraulic drills); Powderman; Pioneer Drilling and Drilling Off Tugger (all type drills); Pipelayers

GROUP 3B: Grade checker (setting or transferring of grade marks, line and grade)

GROUP 4: Final Building Cleanup

TUNNELS, SHAFTS, AND RAISES CLASSIFICATIONS

GROUP 1: Brakeman; Muckers; Nippers; Topman and Bull Gang; Tunnel Track Laborer

GROUP 2: Burning and Cutting Torch; Concrete Laborers; Jackhammers; Nozzleman, Pumpcrete or Shotcrete.

GROUP 3: Miner; Retimberman

GROUP 3A: Asphalt Raker, Asphalt Belly dump lay down; Drill Doctor (in the field); Drillers (including, but not limited to, wagon drills, air track drills; hydraulic drills); Powderman; Pioneer Drilling and Drilling Off Tugger (all type drills); Pipelayers.

GROUP 3B: Grade checker (setting or transferring of grade marks, line and grade)

Tunnel shaft and raise rates only apply to workers regularly employed inside a tunnel portal or shaft collar.

PAIN1959-001 07/01/2018

NORTH OF THE 63RD PARALLEL

	Rates	Fringes
PAINTER		
BRUSH/ROLLER PAINT OR WALL COVERER.....	\$ 32.09	21.09
TAPING, TEXTURING, STRUCTURAL PAINTING, SANDBLASTING, POT TENDER, FINISH METAL, SPRAY, BUFFER OPERATOR, RADON MITIGATION, LEAD BASED PAINT ABATEMENT, HAZARDOUS MATERIAL HANDLER.....	\$ 32.61	21.09

PAIN1959-002 07/01/2018

SOUTH OF THE 63RD PARALLEL

	Rates	Fringes
PAINTER		
Brush, Roller, Sign, Paper and Vinyl, Swing Stage, Hand Taper/Drywall, Structural Steel, and Commercial Spray.....	\$ 32.09	21.09
Machine Taper/Drywall.....	\$ 32.61	21.09
Spray-Sand/Blast, Epoxy and Tar Applicator.....	\$ 32.61	20.09

PAIN1959-003 07/01/2018

NORTH OF THE 63RD PARALLEL

	Rates	Fringes
GLAZIER.....	\$ 39.28	23.49

PAIN1959-004 07/01/2018

	Rates	Fringes
FLOOR LAYER: Carpet.....	\$ 29.13	14.06

PAIN1959-006 07/01/2018

SOUTH OF THE 63RD PARALLEL

	Rates	Fringes
GLAZIER.....	\$ 39.28	23.49

* PLAS0867-001 04/01/2019

	Rates	Fringes
PLASTERER		
North of the 63rd parallel..	\$ 38.13	21.68
South of the 63rd parallel..	\$ 37.88	21.68

* PLAS0867-004 04/01/2019

	Rates	Fringes
CEMENT MASON/CONCRETE FINISHER		
North of the 63rd parallel..	\$ 38.13	21.68
South of the 63rd parallel..	\$ 37.88	21.68

PLUM0262-002 07/01/2018

East of the 141st Meridian

	Rates	Fringes
Plumber; Steamfitter.....	\$ 38.02	27.12

PLUM0367-002 12/03/2018

South of the 63rd Parallel

	Rates	Fringes
Plumber; Steamfitter.....	\$ 39.00	26.70

PLUM0375-002 07/01/2018

North of the 63rd Parallel

	Rates	Fringes
Plumber; Steamfitter.....	\$ 41.46	26.40

PLUM0669-002 04/01/2017		

	Rates	Fringes
SPRINKLER FITTER.....	\$ 46.00	23.29

ROOF0189-006 04/01/2019		

	Rates	Fringes
ROOFER.....	\$ 44.62	16.03

SHEE0023-003 07/01/2018		

South of the 63rd Parallel

	Rates	Fringes
SHEET METAL WORKER.....	\$ 42.70	26.40

SHEE0023-004 07/01/2017		

North of the 63rd Parallel

	Rates	Fringes
SHEET METAL WORKER.....	\$ 47.74	23.48

TEAM0959-003 03/01/2019		

	Rates	Fringes
TRUCK DRIVER		
GROUP 1.....	\$ 39.94	24.12
GROUP 1A.....	\$ 41.21	24.12
GROUP 2.....	\$ 38.68	24.12
GROUP 3.....	\$ 37.86	24.12
GROUP 4.....	\$ 37.28	24.12
GROUP 5.....	\$ 36.52	24.12

GROUP 1: Semi with Double Box Mixer; Dump Trucks (including rockbuggy and trucks with pups) over 40 yards up to and including 60 yards; Deltas, Commanders, Rollogans and similar equipment when pulling sleds, trailers or similar equipment; Boat Coxswain; Lowboys including attached trailers and jeeps, up to and including 12 axles; Ready-mix over 12 yards up to and including 15 yards); Water Wagon (250 Bbls and above); Tireman, Heavy Duty/Fueler

GROUP 1A: Dump Trucks (including Rockbuggy and Trucks with pups) over 60 yards up to and including 100 yards; Jeeps (driver under load)

GROUP 2: Turn-O-Wagon or DW-10 not self-loading; All Deltas, Commanders, Rollogans, and similar equipment; Mechanics; Dump Trucks (including Rockbuggy and Trucks with pups) over 20 yards up to and including 40 yards; Lowboys including attached trailers and jeeps up to and including 8 axles; Super vac truck/cacasco truck/heat stress truck; Ready-mix over 7 yards up to and including 12 yards; Partsman; Stringing Truck

GROUP 3: Dump Trucks (including Rockbuggy and Trucks with pups) over 10 yards up to and including 20 yards; batch trucks 8 yards and up; Oil distributor drivers; Oil Distributor Drivers; Trucks/Jeeps (push or pull); Traffic Control Technician

GROUP 4: Buggymobile; Semi or Truck and trailer; Dumpster; Tireman (light duty); Dump Trucks (including Rockbuggy and Truck with pups) up to and including 10 yards; Track Truck Equipment; Grease Truck; Flat Beds, dual rear axle; Hyster Operators (handling bulk aggregate); Lumber Carrier; Water Wagon, semi; Water Truck, dual axle; Gin Pole Truck, Winch Truck, Wrecker, Truck Mounted "A" Frame manufactured rating over 5 tons; Bull Lifts and Fork Lifts with Power Boom and Swing attachments, over 5 tons; Front End Loader with Forks; Bus Operator over 30 passengers; All Terrain Vehicles; Boom Truck/Knuckle Truck over 5 tons; Foam Distributor Truck/dual axle; Hydro-seeders, dual axle; Vacuum Trucks, Truck Vacuum Sweepers; Loadmaster (air and water); Air Cushion or similar type vehicle; Fire Truck/Ambulance Driver; Combination Truck-fuel and grease; Compactor (when pulled by rubber tired equipment); Rigger (air/water/oilfield); Ready Mix, up to and including 7 yards;

GROUP 5: Gravel Spreader Box Operator on Truck; Flat Beds, single rear axle; Boom Truck/Knuckle Truck up to and including 5 tons; Pickups (Pilot Cars and all light duty vehicles); Water Wagon (Below 250 Bbls); Gin Pole Truck, Winch Truck, Wrecker, Truck Mounted "A" Frame, manufactured rating 5 tons and under; Bull Lifts and Fork Lifts (fork lifts with power broom and swing attachments up to and including 5 tons); Buffer Truck; Tack Truck; Farm type Rubber Tired Tractor (when material handling or pulling wagons on a construction project); Foam Distributor, single axle; Hydro-Seeders, single axle; Team Drivers (horses, mules and similar equipment); Fuel Handler (station/bulk attendant); Batch Truck, up to and including 7 yards; Gear/Supply Truck; Bus Operator, Up to 30 Passengers; Rigger/Swamper

WELDERS - Receive rate prescribed for craft performing operation to which welding is incidental.

=====
Note: Executive Order (EO) 13706, Establishing Paid Sick Leave

for Federal Contractors applies to all contracts subject to the Davis-Bacon Act for which the contract is awarded (and any solicitation was issued) on or after January 1, 2017. If this contract is covered by the EO, the contractor must provide employees with 1 hour of paid sick leave for every 30 hours they work, up to 56 hours of paid sick leave each year.

Employees must be permitted to use paid sick leave for their own illness, injury or other health-related needs, including preventive care; to assist a family member (or person who is like family to the employee) who is ill, injured, or has other health-related needs, including preventive care; or for reasons resulting from, or to assist a family member (or person who is like family to the employee) who is a victim of, domestic violence, sexual assault, or stalking. Additional information on contractor requirements and worker protections under the EO is available at www.dol.gov/whd/govcontracts.

Unlisted classifications needed for work not included within the scope of the classifications listed may be added after award only as provided in the labor standards contract clauses (29CFR 5.5 (a) (1) (ii)).

The body of each wage determination lists the classification and wage rates that have been found to be prevailing for the cited type(s) of construction in the area covered by the wage determination. The classifications are listed in alphabetical order of "identifiers" that indicate whether the particular rate is a union rate (current union negotiated rate for local), a survey rate (weighted average rate) or a union average rate (weighted union average rate).

Union Rate Identifiers

A four letter classification abbreviation identifier enclosed in dotted lines beginning with characters other than "SU" or "UAVG" denotes that the union classification and rate were prevailing for that classification in the survey. Example: PLUM0198-005 07/01/2014. PLUM is an abbreviation identifier of the union which prevailed in the survey for this classification, which in this example would be Plumbers. 0198 indicates the local union number or district council number where applicable, i.e., Plumbers Local 0198. The next number, 005 in the example, is an internal number used in processing the wage determination. 07/01/2014 is the effective date of the most current negotiated rate, which in this example is July 1, 2014.

Union prevailing wage rates are updated to reflect all rate changes in the collective bargaining agreement (CBA) governing this classification and rate.

Survey Rate Identifiers

Classifications listed under the "SU" identifier indicate that

no one rate prevailed for this classification in the survey and the published rate is derived by computing a weighted average rate based on all the rates reported in the survey for that classification. As this weighted average rate includes all rates reported in the survey, it may include both union and non-union rates. Example: SULA2012-007 5/13/2014. SU indicates the rates are survey rates based on a weighted average calculation of rates and are not majority rates. LA indicates the State of Louisiana. 2012 is the year of survey on which these classifications and rates are based. The next number, 007 in the example, is an internal number used in producing the wage determination. 5/13/2014 indicates the survey completion date for the classifications and rates under that identifier.

Survey wage rates are not updated and remain in effect until a new survey is conducted.

Union Average Rate Identifiers

Classification(s) listed under the UAVG identifier indicate that no single majority rate prevailed for those classifications; however, 100% of the data reported for the classifications was union data. EXAMPLE: UAVG-OH-0010 08/29/2014. UAVG indicates that the rate is a weighted union average rate. OH indicates the state. The next number, 0010 in the example, is an internal number used in producing the wage determination. 08/29/2014 indicates the survey completion date for the classifications and rates under that identifier.

A UAVG rate will be updated once a year, usually in January of each year, to reflect a weighted average of the current negotiated/CBA rate of the union locals from which the rate is based.

WAGE DETERMINATION APPEALS PROCESS

1.) Has there been an initial decision in the matter? This can be:

- * an existing published wage determination
- * a survey underlying a wage determination
- * a Wage and Hour Division letter setting forth a position on a wage determination matter
- * a conformance (additional classification and rate) ruling

On survey related matters, initial contact, including requests for summaries of surveys, should be with the Wage and Hour Regional Office for the area in which the survey was conducted because those Regional Offices have responsibility for the Davis-Bacon survey program. If the response from this initial contact is not satisfactory, then the process described in 2.) and 3.) should be followed.

With regard to any other matter not yet ripe for the formal

process described here, initial contact should be with the Branch of Construction Wage Determinations. Write to:

Branch of Construction Wage Determinations
Wage and Hour Division
U.S. Department of Labor
200 Constitution Avenue, N.W.
Washington, DC 20210

2.) If the answer to the question in 1.) is yes, then an interested party (those affected by the action) can request review and reconsideration from the Wage and Hour Administrator (See 29 CFR Part 1.8 and 29 CFR Part 7). Write to:

Wage and Hour Administrator
U.S. Department of Labor
200 Constitution Avenue, N.W.
Washington, DC 20210

The request should be accompanied by a full statement of the interested party's position and by any information (wage payment data, project description, area practice material, etc.) that the requestor considers relevant to the issue.

3.) If the decision of the Administrator is not favorable, an interested party may appeal directly to the Administrative Review Board (formerly the Wage Appeals Board). Write to:

Administrative Review Board
U.S. Department of Labor
200 Constitution Avenue, N.W.
Washington, DC 20210

4.) All decisions by the Administrative Review Board are final.

=====

END OF GENERAL DECISION

Bid Schedule Homer A-Frame PRV Station Replacement

ITEM NO.	BASE BID ITEM DESCRIPTION	UNIT	QUANTITY	BID PRICE
1	Mobilization/Demobilization	Lump Sum	1	
2	Construction Survey	Lump Sum	1	
3	Building Demolition (including foundation)	Lump Sum	1	
4	Construct New Building	Lump Sum	1	
5	F&I Interior Valves, Fittings, and Piping	Lump Sum	1	
6	F&I Exterior Valves, Fittings and Piping	Lump Sum	1	
7	Interior/Exterior Water Piping Flushing, Pressure Testing and Disinfection	Lump Sum	1	
8	Electrical	Lump Sum	1	
9	Final Grading, Topsoil, and Seeding (including ditching and ditch lining)	Lump Sum	1	

Total Base Bid Price =

\$0.00

ITEM NO.	ADDITIVE BID ITEM DESCRIPTION	UNIT	QUANTITY	BID PRICE
	Delete T1-11 Exterior Siding and Provide Lap- Board Composite Cement Siding	Lump Sum	1	

Total Additive Bid Price =

\$0.00

Name of Firm _____

Address of Firm _____

Authorized Signature _____

Printed Name _____

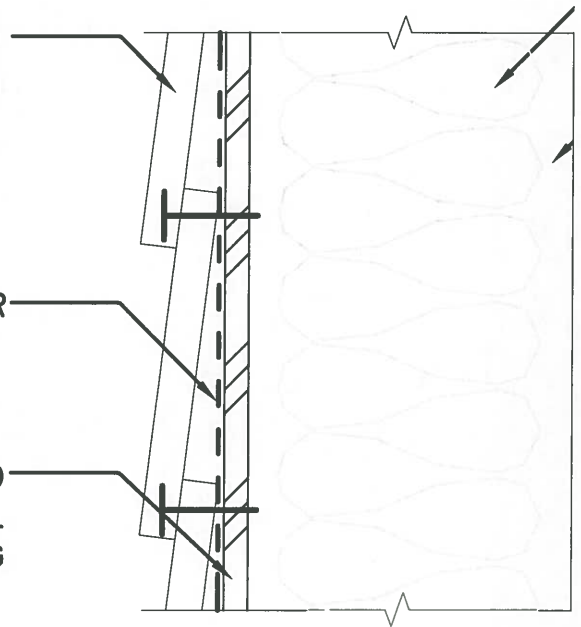
Title of Signatory _____

Date of Bid _____

8 1/4" LAP-BOARD COMPOSITE CEMENT
SIDING W/ ROOF NAILS (1 3/4" LONG x 0.120"
SHANK x 0.375" ϕ HEAD) BLIND NAILED @
8" O/C PER MFR RECOMMENDATIONS

AIR BARRIER

1/2" PLYWOOD
STRUCTURAL
SHEATHING



A

EXTERIOR FRAMED WALL