

**CITY OF HOMER  
INVITATION TO BID / BID DOCUMENTS**

**Airport Terminal Roof Replacement  
Homer Alaska 2020**



**This project is funded by the City of Homer General Project Fund**

**INVITATION TO BID**  
**By the City of Homer, Alaska**

**Airport Terminal Roof Replacement 2020**

Sealed bids for the **Homer Airport Terminal Roof Replacement project** will be received at the Office of the City Clerk, City Hall, City of Homer, 491 East Pioneer Avenue, Homer, Alaska, until **2:00 p.m. Thursday, January 23, 2020** at which time they will be publicly opened and read. The time of receipt will be determined by the City Clerk's time stamp. Bids received after the time fixed for the receipt of the bids shall not be considered. **All bidders must submit a City of Homer Plan Holders Registration form to be on the Plan Holders List to be considered responsive.** Plan holder registration forms and Plans and Specifications are available online at <http://www.cityofhomer-ak.gov/rfps>

A Pre-Bid site meet will be held at **3:00 PM, Friday January 3, 2020** at Homer Airport Terminal, Homer, Alaska to answer bidder's questions. Ladder will be provided for roof access, weather permitting. The work includes, but is not limited to the following:

Removal of approximately 8200 S.F. of asphalt shingles and felt underlayment. Install self-adhering Membrane underlayment and new asphalt shingles. Install new EPDM membrane over cleaned/prepped existing EPDM surfaced flat roofs at 4 canopies. Clean/prep/recoating of existing galvanized metal ridgeline roof vents. Demolition of existing/abandoned metalbestos mechanical room roof mounted flue and replacement/rerouting with new sidewall flues to accommodate new natural gas venting currently retrofitted inside of the old flue.

Please direct all technical questions regarding this project to: Carey Meyer, City of Homer, Public Works Department, 3575 Heath Street, Homer, Alaska 99603 or call (907) 235-3170.

An electronic copy of Plans and Specifications is available on the City's website <http://www.cityofhomer-ak.gov/rfps> or you may purchase hard copies at the Office of the City Clerk upon payment of \$170 per set (\$200 for overnight delivery). City of Homer Standard Construction Specifications 2011 Edition (containing general contract provisions) may also be downloaded from the City's web site. All fees are non-refundable. The City of Homer reserves the right to accept or reject any or all bids, to waive irregularities or informalities in the bids, and to award the contract to the lowest responsive bidder.

DATED this 23<sup>rd</sup> day of December, 2019.

**CITY OF HOMER**



Katie Koester, City Manager

Publish: Homer News – December 26, 2019 & January 2, 2020

Peninsula Clarion – December 28, 2019 Ad#19-118/#19-119

Acct#156-0388-5227

City of Homer

**TABLE OF CONTENTS**

**AIRPORT TERMINAL ROOF  
REPLACEMENT 2020**

**BID ADVERTISEMENT**

<b>I.</b>	<b>SCOPE OF SERVICES</b>	<b><i>IB-1</i></b>
<b>II.</b>	<b>GENERAL BIDDING REQUIREMENTS</b>	<b><i>IB-1 – IB-2</i></b>
<b>III.</b>	<b>INSTRUCTION TO BIDDERS</b> Bidders Checklist	<b><i>IB-1 – IB-5</i></b> <b><i>IB-6</i></b>
<b>IV.</b>	<b>BID SCHEDULE</b>	
	<b>PART A</b>	
	1. Bid Schedule (Form)	
	2. Bid Bond	
	<b>PART B</b>	
	1. Addenda Acknowledgment	
	2. EEO-1 Certification	
	3. Equal Employment Opportunity Clause	
<b>V.</b>	<b>CONTRACT DOCUMENTS</b>	
<b>VI.</b>	<b>PROJECT SCHEDULE</b>	
<b>VII.</b>	<b>SPECIAL PROVISIONS</b>	
<b>VIII.</b>	<b>SUBMITTALS</b>	
<b>IX.</b>	<b>APPENDIX</b>	
	1. Mechanical Room Boiler Venting Modifications Drawings	
	2. State of Alaska Minimum Rates of Pay	
	3. 5% Local Bidder's Preference Policy	

## **Airport Terminal Roof Replacement Homer Alaska 2020**

The City of Homer, Alaska is requesting bids from qualified firms and individuals for the project described herein.

### **I. Scope of Services**

The proposed work is located within the Homer City limits and illustrated on the plans entitled:

## **Airport Terminal Roof Replacement Homer Alaska 2020**

The project consists of furnishing all labor, materials, equipment, tools, supervision and other facilities necessary for the performance of the work described herein and shown on the project drawings. The work includes but is not limited to the following:

Removal of approximately 8200 S.F. of asphalt shingles and felt underlayment. Replacement of felt underlayment with Self Adhering Membrane underlayment and new asphalt shingles. Installation of new EPDM membrane over cleaned/prepped existing EPDM surfaced flat roofs at 4 locations. Existing roof drains and flashings to be reused upon favorable inspections. Clean/prep/recoating of existing galvanized metal roof vents. Demolition of existing/abandoned metalbestos roof mounted flue and replacement/rerouting with new sidewall flues to accommodate new natural gas venting currently retrofit inside of the old flue. Removal of existing combustion air intake louver in way of new exhaust venting. Removal of abandoned 4" - 6" VTR from mechanical room. Proper disposal and clean-up of all removals.

### **II. General Bidding Requirements**

The work must be performed by a Contractor skilled and regularly engaged in the general class or type of work called for under the Contract. The bidder must have a current contractor's license issued by the State of Alaska. The license must apply to the work described in the Invitation to Bid.

The City of Homer Standard Construction Specifications, 2011 Edition, shall supplement the project plans. A copy of the Homer Standard Construction Specifications (S.C.S.) may be obtained at the City of Homer Web Site, <http://www.cityofhomer-ak.gov/publicworks>

### **State Prevailing Rate Wages**

See Appendix for specific Davis Bacon Requirements.

This project is covered by the State of Alaska, Laborer's and Mechanic's Minimum Rates of Pay, **Title 36 Public Contracts, (AS 36.05 & 36.10) Pamphlet No. 600, Issue 39 and General Decision Number: AK190001 09/18/2019 AK1.** It is the responsibility of the bidder to determine the current rates of pay required and to submit the proper certified payrolls to the State Department of Labor.

**Performance and Payment bonds** in the amount of One Hundred Percent **100%** of the bid amount are required.

Bids must be submitted on the Bid Form and be received at the Office of the City Clerk, 491 E. Pioneer Avenue, Homer, Alaska 99603. **A bid bond is required.** Cashier checks in an amount equal to five percent (5%) of the bid are acceptable. Surety bonds are acceptable.

**The City of Homer has a two-part bid process, Part A and Part B. Each portion of the bid must be submitted in separate envelopes. At the bid opening, Part B is opened first and must be complete and regular or Part A will not be opened and the bid will be rejected.**

**Part A** of the bid contains the  
Bid Form (**Part A**)  
Bid Bond (**Part A**) and the Power of Attorney (if needed).  
**Part A must be submitted separately in an envelope marked Part A.**

**Part B** of the bid contains:  
Addenda Acknowledgement must be signed and included with the Bid. (**Part B**)  
EEO-1 Certification (**Part B**)  
Equal Employment Opportunity Clause form. (**Part B**)  
**(Part B must be submitted separately in an envelope marked Part B).**

### **III. Instruction to Bidders**

The City of Homer reserves the right to accept or reject any or all proposals, to waive irregularities or informalities in the proposals, and to award the contract to the bidder that best meets the criteria stated below.

#### **A. Qualification of Bidders**

It is the intention of the City of Homer to award this contract to the lowest responsible, responsive Bidder who furnishes satisfactory evidence they have the requisite experience, ability and sufficient capital, facilities and plant to prosecute the work successfully (and properly) and to complete it within the time allowed in the Contract at the least cost to the City of Homer for dollars spent for value received.

If the signature on the Bid is by an agent, other than an Officer of a corporation or a member of a Co-partnership, a Power of Attorney must either be on file with the City Clerk prior to the Bid opening or submitted with the Bid in Part B.

#### **B. Taxes**

Attention is directed to the requirements of the General Conditions regarding the payment of taxes. All taxes that are lawfully assessed against Owner or Contractor in connection with the work shall be paid by the Contractor. The Bid prices shall include all such taxes.

The City of Homer is exempt from local sales taxes. The Contractor shall not include sales tax markup in his bid. However, in order to recoup sales tax the Contractor might pay at local vendors, the Contractor must secure a Tax Exempt card from the Kenai Peninsula Borough Tax Department.

### **C. Familiarization with the Work**

Before submitting a Bid, each prospective Bidder shall familiarize themselves with the work, labor conditions and all laws, regulations and other factors affecting performance of the work. The Contractor shall carefully correlate his observations with the requirements of the Contract Documents and otherwise satisfy himself of the expense and difficulties attending performance of the work. The submission of a Bid shall constitute an acknowledgement that the Bidder has thoroughly examined and is familiar with the Contract Documents and the provisions thereof. The failure or neglect of a Bidder to receive or examine any of the Bid Documents shall in no way relieve the bidder from any obligations with the respect to their Bid or to the Contract. Misinterpretation or a reputed lack of knowledge concerning the Bid will not serve as a basis for a claim for additional compensation.

#### **1. Site Conditions**

Each Bidder shall visit the site of the Work and completely inform himself relative to construction hazards and procedures, the availability of lands, the character and quantity of surface and subsurface materials and utilities to be encountered, the arrangement and conditions of existing structures and facilities, the procedure necessary for maintenance of uninterrupted operations of existing facilities, the character of construction equipment and facilities needed for performance of the work, and facilities for transportation, handling and storage of materials and equipment. All such factors shall be properly investigated and considered in the preparation of the Bid.

### **D. Interpretation of Bid Documents**

All questions about the meaning or intent of the Contract Documents shall be submitted, in writing, to the Office of the Director of Public Works, 3575 Heath St. Homer Alaska, 99603. Replies will be issued by Addenda mailed or delivered to all parties recorded by the City Clerk's Office as having received the Bidding documents. **The City of Homer will not be held responsible for questions received less than (7) days prior to the date of opening of Bids.** Only questions answered by formal written Addenda will be binding. Oral and other interpretations or clarifications will be without legal effect. No questions will be answered the day of the bid due date.

**The Bid shall contain an acknowledgement of receipt of all Addenda, the numbers of which shall be filled in on the Addendum Form, properly signed by the Bidder and placed in envelope B. It shall be the Bidder's responsibility to inquire as to addenda issued. Failure to include the Addenda Form in envelope B shall result in the Bid being rejected as non-responsive.**

## **E. Bid Bond Guarantee**

Each Bid shall be accompanied by a Bid Bond duly completed on the suggested form provided by a guaranty company authorized to carry on business in the State of Alaska, along with a General Power of Attorney form, if applicable, for payment to the City in the sum of five percent (5%) of the total amount of the Bid. **Failure to include the Bid Bond in envelope A of the Bid shall result in the Bid being rejected as non-responsive.**

The amount payable to the City under the Bid Bond or the certified or cashier's check, as the case may be, shall be forfeited to the City in case of a failure or neglect of the Bidder to furnish, execute, and deliver to the City required Performance and Payment Bonds, Evidences of Insurance, necessary forms or material required by the Bid or failure to enter into, execute and deliver to the City the Contract on the form provided therefor, within ten (10) working days after receipt of "Notice of Intent to Award Contract" by the City that the Contract is ready for execution. The "Award of Contract" will be made upon the execution of the Contract by the Bidder and the City.

## **F. Return of Bid Guarantee**

Within thirty (30) days after the Bids are opened, the City will return the Bid Guarantees accompanying the Bids, which are not to be considered in making the award. The bid Guarantees of the three (3) lowest responsive Bids will be held until the Contract has been fully executed after which time the Guarantees will be returned to the respective Bidders whose Bids the Guarantees accompanied.

## **G. Contract Time**

The Contract Time is an essential part of the Contract and it will be necessary for each Bidder to satisfy the City of his ability to complete the work within the time set forth in the Bid form. Provisions for delays, liquidated damages, and extensions of time are set forth in the Standard Construction Specifications. Time is of the essence in this contract.

## **H. Bids**

### **1. Preparation of Bids**

Bids must be submitted on the forms provided by the city and completed in all respects as required by the Bid Documents. Bids shall include all information requested herein, and be manually signed by the Bidder or the Bidder's duly authorized representative, with the Bidder's address and phone number.

If the signature is by an agent, other than an Officer of a Corporation, or a member of a Co-partnership, a Power of Attorney must be on file with the City Clerk prior to opening the Bid or submitted in envelope B of the Bid; otherwise, the Bid will be disregarded as irregular and unauthorized, and will be rejected as non-responsive.

**All Bids must be regular in every respect, and no alterations shall be made to the Bid form.** If erasures or changes appear on the forms, each must be initialed by the person signing the Bid. No oral, telegraphic or telephone proposals will be considered.

Bids will be received at the City Clerk's Office located at 491 East Pioneer Avenue, Homer, Alaska 99603, until the time indicated on the Invitation to Bid. Each Bid shall be submitted enclosed in a sealed, opaque envelope. **The Bidder shall see that the Bid title and date of Bid opening is on the lower left-hand corner of the envelope.** The City is not responsible for the premature opening of, or failure to open, a bid not properly addressed and identified. Promised overnight delivery from the Post office or private carriers usually is an inaccurate statement for Alaska and Homer Area.

No consideration will be given by the city to a claim of error unless such claim is made to the city in writing within two (2) hours after the time of Bid opening. Written verification and supporting evidence of the error shall be delivered to the City Clerk within 24 hours of the Bid Opening (not including Saturday, Sunday or legal holidays) to allow consideration of the claim for error. Supporting evidence shall be original documents, including cost breakdown sheets, supplier quotes and other documents used to compute the Bid.

It is the bidder's responsibility to see that Bids are deposited at the time and place set forth for the public opening of Bids. Bids not received by the time will not be accepted and will be returned to the Bidder in the sealed bid envelope.

**II. The City of Homer Local Bidder Preference does apply to this contract.**



**BIDDER'S CHECKLIST**  
**Homer Airport Terminal Roof Replacement**

The following items must be completed and accompany the Bid unless noted otherwise (Note: This checklist consists of one (1) page):

**Part A**

1. BID FORM (Schedule), must be complete. The Bid form must be signed with the name and address of bidder typed or clearly printed, and a copy of the bidder's Alaska State Contract License must be included. **(Part A)**
2. BID BOND, Cashier's Check, Certified Check, or Cash in the amount of Five percent (5%) of the MAXIMUM BID must be included. **(Part A)**

**Part B**

3. Addenda Acknowledgement must be signed and included with the Bid. **(Part B)**
4. EEO-1 Certification **(Part B)**
5. Equal Employment Opportunity Clause form. **(Part B)**

**All Bids must contain the items listed above in complete form and must be filled out and signed.**

**END OF SECTION**

**-IB-6-**

## **IV. BID SCHEDULE**

### **Part A**

Bid Schedule (BS)

City of Homer

BID SCHEDULE – SUMMARY

**Airport Terminal Roof Replacement**

**Total Project Cost:**

\$ \_\_\_\_\_  
**In Numbers**

\$ \_\_\_\_\_  
**In Words**

Name of Firm:

\_\_\_\_\_  
Typed or Printed Name

Address of Firm:

\_\_\_\_\_  
\_\_\_\_\_  
\_\_\_\_\_

Authorized Signature:

\_\_\_\_\_

Typed or Printed  
Name of Signatory:

\_\_\_\_\_

Title of Signatory:

\_\_\_\_\_

Date of Bid:

\_\_\_\_\_

BID BOND

KNOW ALL MEN BY THESE PRESENTS, that \_\_\_\_\_

Hereinafter called the PRINCIPAL, and \_\_\_\_\_

a Corporation duly organized under the laws of the State of Alaska having its principal place of business at \_\_\_\_\_

In the State of Alaska, and authorized to do business in the State of Alaska, as SURETY, are held and firmly bound unto the City of Homer hereinafter called the OBLIGEE, in the penal

sum of \_\_\_\_\_ DOLLARS (\$ \_\_\_\_\_) for payment of which we bind ourselves, our heirs, executors, administrators, successors, and assigns, jointly and severally, firmly by these presents.

THE CONDITION OF THIS BOND IS SUCH THAT:

WHEREAS, the PRINCIPAL has herewith submitted his or its BID for \_\_\_\_\_

\_\_\_\_\_ said Bid, by reference thereto, being hereby made a part hereof.

NOW, THEREFORE, if the Bid submitted by the PRINCIPAL is accepted and the Contract awarded to the PRINCIPAL, and if the PRINCIPAL shall execute the proposed Contract and shall furnish such Performance and Payment Bond as required by the Contract Documents within the time fixed by the documents, then this obligation shall be void: if the PRINCIPAL shall fail to execute the proposed Contract and furnish the Bond, the SURETY hereby agrees to pay the OBLIGEE the penal sum as liquidated damages:

Signed and sealed this \_\_\_\_\_ Day of \_\_\_\_\_, 2019.

PRINCIPAL: \_\_\_\_\_

BY: \_\_\_\_\_

SURETY: \_\_\_\_\_

ATTORNEY-IN-FACT: \_\_\_\_\_

## **PART B**

# ADDENDA ACKNOWLEDGMENT

Project Name: **Airport Terminal Roof Replacement 2020**

I hereby acknowledge addenda numbers:

---

---

---

---

---

---

---

Name of Firm: \_\_\_\_\_

Signature of Bidder: \_\_\_\_\_

Date: \_\_\_\_\_

**This Acknowledgement must be included with Part B of the Bid or the Bid will be considered non-responsive.**

## City of Homer

### Equal Employment Opportunity (EEO – 1) CERTIFICATION

The following Certification is required by the Equal Employment Opportunity Regulations of the Secretary of Labor (41 CFR 60-1.7 (b) (1) ) and must be submitted by BIDDERS and proposed SUBCONTRACTORS in connections with contracts and subcontracts which are subject to the Equal Opportunity Clause. Contracts and subcontracts which are exempt from the Equal Opportunity Clause are set forth in 41 CFR 60-1.5 (generally only contracts or subcontracts of \$10,000 or under are exempt.) Proposed PRIME CONTRACTORS and SUBCONTRACTORS who have participated in a previous contract or subcontract subject to the Executive Orders and have not filed the required reports, should note the 41 CFR 60-1.7 (b) (1) prevents the award of contracts and subcontracts unless such contractor submits a report covering the delinquent period or such other period as specified by the Federal Highway Administration; by the Director, Office of Federal Contract Compliance Programs, U.S. Department of Labor; or by the Equal Employment Opportunity Commission.

Currently, Standard Form 100 (EEO-1) is the only report required by the Executive Orders or their implementing regulations. The Employer Information Report EEO-1 (Standard Form 100) is not a voluntary survey. The filing of the report is in accordance with Standard Form 100 instructions and is required by Federal law. The applicable law is Section 709©, Title VII, Civil rights Act of 1964 and regulations issued by the Equal Opportunity Commission under that law are reprinted in Appendix (6). Under Section 710(b) of Title VII, the Commission may obtain an order from a United States District Court compelling a covered employer to file this report. Under Section 209 (a) of Executive Order 11246, the penalties for failure by a Federal contractor or subcontractor to comply may include termination of the Federal government contract and debarment from future Federal contracts.

It is the employer's responsibility to keep current on all EEO-1 filing requirements. All inquiries and requests for special procedures should be directed to: Office of Federal Contract Compliance Programs, Department of Labor, Federal Building/U.S. Court House, 701 C Street, Box 55, Anchorage, AK 99513. Blank reporting forms may be obtained from: The Joint Reporting committee, P.O. Box 2236, Norfolk, Virginia 23501 (804) 625-3734.

(CHECK APPLICABLE BLOCK) The BIDDER \_\_\_\_\_ or proposed  
SUBCONTRACTOR \_\_\_\_\_ hereby certifies:

1. Their firm has participated in a previous contract or subcontractor subject to the Equal Opportunity Clause as required by Federal Executive Order 11246, Section 201 (301 F.R. 12319) YES \_\_\_\_\_ NO \_\_\_\_\_

A. Their firm has filed all reports due under the applicable filing requirement with the Joint Reporting Committee Opportunity Commission as stated in this certifications. YES \_\_\_\_\_ NO \_\_\_\_\_

2. Their firm has participated in a previous City of Homer construction contract or subcontract. YES \_\_\_\_\_ NO \_\_\_\_\_

A. Their firm has filed all the EEO reports due under applicable filing requirements of the city of Homer Department of Public Works. YES \_\_\_\_\_ NO \_\_\_\_\_

\_\_\_\_\_  
Signature of Authorized Representative of Company

\_\_\_\_\_  
Date

\_\_\_\_\_  
Name of Company

\_\_\_\_\_  
Phone Number

\_\_\_\_\_  
Address of Company

\_\_\_\_\_  
Zip Code

PROJECT NAME

**City of Homer Alaska, Airport Terminal Roof Replacement 2020**

This certificate (2 pages) needs to be included with the Bid Documents Part B or the Bid will be considered non-responsive.



**Page 2 of EEO-Certification**  
**EQUAL EMPLOYMENT OPPORTUNITY CLAUSE**

During the performance of this contract, the contractor agrees to comply with OFCC Regulations 40 CFR 60.1.4 (1) through (7) as follows:

1. The contractor will not discriminate against any employee or applicant for employment because of race, color, religion, sex or national origin. The contractor will take affirmative action to ensure that applicants are employed, and that employees are treated during employment without regard to their race, color, religion, sex, or national origin. Such action shall include, but not be limited to the following: Employment, upgrading, demotion, or transfer, recruitment or recruitment advertising; layoff or termination; rates of pay or other forms of compensation; and selection for training, including apprenticeship. The contractor agrees to post in conspicuous places, available to employees and applicants for employment, notices to be provided by the contracting officer setting forth the provisions of this nondiscrimination clause.
2. The contractor will, in all solicitations or advertisements for employees placed by or on behalf of the contractor, state that all qualified applicants will receive consideration for employment without regard to race, color, religion, sex, or national origin.
3. The contractor will send to each labor union or representative of workers with whom he has a collective bargaining agreement or other contract or understanding, a notice to be provided by the agency contracting officer, advising the labor union or workers' representative of the contractor's commitments under Section 202 of Executive Order 11246 of September 24, 1965 and shall post copies of the notice in conspicuous places available to employees and applicants for employment.
4. The contractor will comply with all provisions of executive order 11246 of September 24, 1965 and of the rules, regulations, and relevant orders of the Secretary of Labor.
5. The contractor will furnish all information and reports required by Executive Order 11246 of September 24, 1965 and by the rules, regulations, and orders of the secretary of labor, or pursuant thereto, and will permit access of his books, records, and accounts by the contracting agency and the secretary of Labor for purposes of investigation to ascertain compliance with such rules, regulations, and orders.
6. In the event of the contractor's noncompliance with the nondiscrimination clauses of this contract or with any such rules, regulations or orders, this contract may be canceled, terminated or suspended in whole or in part and the contractor may be declared ineligible for further government contracts in accordance with procedures authorized in executive order 11246 of September 24, 1965 and such other sanctions may be imposed and remedies invoked as provided in executive order 11246 of September 24, 1965 or by rule, regulation or order of the Secretary of Labor as otherwise provided by law.

7. The contractor will include the provisions of paragraphs (1) through (7) in every subcontract or purchase order unless exempted by rules, regulations, or orders of the Secretary of Labor issued pursuant to section 204 of Executive Order 11246 of September 24, 1965 so that such provisions will be binding upon each subcontractor or vendor. The contractor will take such

action with respect to any subcontract or purchase order as the contracting agency may direct as a means of enforcing such provisions including sanctions for noncompliance: Provided, however that in the event the contractor becomes involved in, or is threatened with, litigation with a subcontractor or vendor as a result of such direction by the contracting agency, the contractor may request the United States to enter into such litigation to protect the interest of the United States.

---

(Signature)

---

(Title)

---

(Date)

This form (2 pages) must be included with the Bid, Part B, or the Bid will be considered non-responsive.

## V. Contract Documents

## PROPOSED CONSTRUCTION CONTRACT

This Contract, made and entered into by and between the City of Homer, Alaska, a Municipal Corporation, hereinafter called the "City" and

---

Hereinafter called the "Contractor";

WITNESSETH:

The Contractor, in consideration of the sum to be paid him by the City and of the covenants and agreements herein contained, hereby agrees at his own cost and expense to do all the work and furnish all the materials, tools, labor and all appliances, machinery and appurtenances for City to the extent of the Bid made by the contractor, dated the \_\_\_\_\_ day of \_\_\_\_\_, 2020, all in full compliance with the Contract documents referred to herein as:

City of Homer Alaska, Airport Terminal Roof Replacement 2020

- a) Invitation to Bid
- b) The signed copy of the Bid
- c) The Bid Bond
- d) The 2011 Homer Standard Construction Specifications
- e) All Addenda, totaling \_\_\_\_\_
- f) The drawings which consist of 6 sheets titled

### Homer Airport Terminal Roof Replacement

Are hereby referred to and reference made a part of the Contract as fully and completely as if the same were fully set forth herein.

In consideration of the performance of the work as set forth in these Contract Documents, the city agrees to pay to the contractor the amounts specified bid in the Bid and to make such payments upon the Contractor's invoicing as approved by the City Engineer.

# CONTRACT

## CONTRACT COMPLETION TIME

The Contractor agrees to complete the project, in all respects **August 1, 2020**

## CONTRACT AMOUNT

\$ \_\_\_\_\_  
In Numbers

\$ \_\_\_\_\_  
In Words

## LIQUIDATED DAMAGES:

Liquidated damages in the amount of **\$200.00** per day will apply to the Contractor's unexcused delay in the Completion of Construction. The liquidated damage amount specified herein shall only apply to damages and expenses the Owner may incur as a result of a delay in placing the facility into use and operation exclusive of third party damages or claims. The liquidated damage amount shall not cover any damages or expenses the Owner may incur as a result of the Contractor's unexcused delay in completing any portion of all of the Project, which delay results in whole or in part in delay, disruption, hindrance, interference, damages or expenses to any third party. The Contractor shall remain liable for the full amount of any such delay damages or expenses suffered by any third party without limitation by any liquidated damage provision set forth in the Contract.

IN WITNESS WHEREOF, we, the parties hereto, each herewith subscribe the same this \_\_\_\_\_ day of \_\_\_\_\_, 2020.

CITY OF HOMER

By: \_\_\_\_\_

Title: Mary K. Koester, Homer City Manager

CONTRACTOR

\_\_\_\_\_  
(Contractor)

By: \_\_\_\_\_

Title: \_\_\_\_\_

PERFORMANCE BOND

KNOW ALL MEN BY THESE PRESENTS: That we \_\_\_\_\_  
(Name of Contractor)

\_\_\_\_\_ a \_\_\_\_\_  
(Corporation, Partnership, Individual)

hereinafter called "Principal" and \_\_\_\_\_  
(Surety)

of \_\_\_\_\_, State of \_\_\_\_\_

hereinafter called the "Surety" are held and firmly bound unto the City of Homer, hereinafter called "Owner," in the penal sum of \_\_\_\_\_ dollars (\$\_\_\_\_\_) in lawful money of the United States, for the payment of which sum well and truly to be made, we bind ourselves, our heirs, executors, administrators and successors, jointly and severally, firmly by these presents.

THE CONDITIONS OF THIS OBLIGATION are such that Whereas, the Principal has or is about to enter into a certain contract with the Owner, a copy of which is hereto attached and made a part hereof for the construction of:

NOW, THEREFORE, if the Principal shall well, truly and faithfully perform its duties, all the undertakings, covenants, terms, conditions, and agreements of said contract during the original term thereof, and any extensions thereof which may be granted by the Owner, with or without notice to the Surety, and if it shall satisfy all claims and demands incurred under such contract, and shall fully indemnify and save harmless the Owner from all costs and damages which it may suffer by reason of failure to do so, and shall reimburse and repay the Owner all outlay and expense which the Owner may incur in making good any default, then this obligations shall be void; otherwise to remain in full force and effect.

PROVIDED, FURTHER, that the said surety, for value received hereby stipulates and agrees that no change, extension of time, alteration or addition to the terms of the contract or the work to be performed thereunder or the specifications accompanying the same shall in any wise affect it obligation on this bond, and it does hereby waive notice of any such change, extension of time, alteration or addition to the terms of the contract or to the work or to the specifications.

PROVIDED, FURTHER, that no final settlement between the Owner and the Principal shall abridge the right of any beneficiary hereunder, whose claim may be unsatisfied.

IN WITNESS WHEREOF, this instrument is executed in five(5) counterparts, each one of which shall be deemed and original, this the \_\_\_\_\_ day of \_\_\_\_\_, 2020.

ATTEST:

\_\_\_\_\_  
(Principal's Corporate Secretary)

\_\_\_\_\_  
(Principal)

Affix CORPORATE SEAL if applicable

\_\_\_\_\_  
\_\_\_\_\_  
(Address-Zip Code)

\_\_\_\_\_  
(Witness as to Principal)

\_\_\_\_\_  
(Address - Zip Code)

\_\_\_\_\_  
(Surety)

ATTEST:

By: \_\_\_\_\_  
(Attorney-in-Fact)

\_\_\_\_\_  
(Surety) Secretary

\_\_\_\_\_  
(Address-Zip Code)

(Affix SURETY'S SEAL)

\_\_\_\_\_  
(Witness as to Surety)

\_\_\_\_\_  
(Address-Zip Code)

Notes:

If Principal is Partnership, all partners must execute bond. The Attorney-in-Fact, who executes this bond on behalf of the surety, must attach a copy of his Power-of-Attorney as evidence of his authority.

PAYMENT BOND

KNOW ALL MEN BY THESE PRESENTS: That we \_\_\_\_\_  
(Name of Contractor)

\_\_\_\_\_ a \_\_\_\_\_  
(Corporation, Partnership, Individual)

hereinafter called "Principal" and \_\_\_\_\_  
(Surety)

of \_\_\_\_\_, State of \_\_\_\_\_

hereinafter called the "Surety" are held and firmly bound unto the City of Homer,

hereinafter called "Owner," in the penal sum of \_\_\_\_\_

dollars (\$\_\_\_\_\_) in lawful money of the United States, for the payment of which sum well and truly to be made, we bind ourselves, our heirs, executors, administrators and successors, jointly and severally, firmly by these presents.

THE CONDITIONS OF THIS OBLIGATIONS are such that Whereas, the Principal has or is about to enter into a certain contract with the Owner, a copy of which is hereto attached and made a part hereof for the construction of:

NOW, THEREFORE, if the Principal shall promptly make payment to all persons, firms, subcontractors and corporations furnishing material for, or performing labor in the prosecution of the work provided for in such contract, and any authorized extension or modification thereof, including all amounts due for material, lubricants, fuels, repairs on machinery, equipment and tools, consumed or used in connection with the construction of such work, and all insurance premiums on said work, and for all labor performed in such work, whether by subcontractor or otherwise, then this obligation shall be void: otherwise to remain in full for and effect.

PROVIDED, FURTHER, that the said Surety, for value received hereby stipulates and agrees that no change, extension of time, alteration or addition to the terms of the contract or the work to be performed thereunder or the specifications accompanying the same shall in any wise affect it obligation on this bond, and it does hereby waive notice of any such change, extension of time, alteration or addition to the terms of the contract or to the work or to the specifications.

PROVIDED, FURTHER, that no final settlement between the Owner and the Principal shall abridge the right of any beneficiary hereunder, whose claim may be unsatisfied.

IN WITNESS WHEREOF, this instrument is executed in five (5) counterparts, each one of which shall be deemed and original, this the \_\_\_\_\_ day of \_\_\_\_\_, 2020.



ATTEST:

\_\_\_\_\_  
(Principal's Corporate Secretary)

\_\_\_\_\_  
(Principal)

Affix CORPORATE SEAL if applicable

\_\_\_\_\_  
(Address-Zip Code)

\_\_\_\_\_  
(Witness as to Principal)

\_\_\_\_\_  
(Address-Zip Code)

\_\_\_\_\_  
(Surety)

ATTEST:

By: \_\_\_\_\_  
(Attorney-in-Fact)

\_\_\_\_\_  
(Surety) Secretary

\_\_\_\_\_  
(Address-Zip Code)

(Affix SURETY'S SEAL)

\_\_\_\_\_  
(Witness as to Surety)

\_\_\_\_\_  
(Address-Zip Code)

Notes:

If Principal is Partnership, all partners must execute bond. The Attorney-in-Fact, who executes this bond on behalf of the Surety, must attach a copy of his Power-of-Attorney as evidence of his authority.

# VI. Project Schedule

## **Homer Airport Terminal Roof Replacement 2020**

Advertise	Homer News Peninsula Clarion	12/26/19 & 1/2/20 12/28/19
Pre-Bid Site Meet – Airport Terminal		1:00 PM, Wed, 1/3/20
Bids Due		2:00 PM, Thursday, 1/23/20
Notice of Intent to Award		1/24/20
Council Award		1/27/20
Notice to Proceed		1/31/20
Pre-Construction Meeting		To Be Determined
Construction Complete		8/1/2020

## VII. Special Provisions

## **SPECIAL PROVISIONS**

### **Homer Airport Terminal Roof Replacement**

#### **DESCRIPTION OF WORK**

The Work included under this Contract consists of furnishing all labor, materials, equipment, supervision, and other facilities necessary to successfully complete the Work set forth in the drawings, specifications, and the terms of the Contract.

The Work that is presented in the Bid Proposal for this Contract consists of the following major elements of work:

- Remove and dispose of the existing asphalt shingle/felt underlayment roof system (8200 SF)
- Install self-adhering membrane underlayment and new asphalt shingles.
- Install new EPDM membrane over cleaned/prepped existing EPDM surfaced flat roofs at four canopies.
- Clean/prep/recoating of existing galvanized metal ridgeline roof vents.
- Removal and disposal of existing metalbestos mechanical room roof mounted flue penetration
- Modify/rerouting flue conduits through building side wall to allow for removal of roof mounted flue penetration
- Remove and replace vent/pipe roof penetration boots and rake wall flashing
- Inspected and replace as necessary two sheet metal scuppers located at the north flat roof canopies
- Other miscellaneous work depicted on the plans and described herein.

#### **GENERAL PROVISIONS**

The construction contract for this project will be administered in accordance with the General Provisions of the City's Standard Construction Specifications (2011).

#### **MODIFICATIONS TO GENERAL PROVISIONS**

The Contract price paid for each Bid Item shall constitute full compensation for furnishing all material, equipment and supplies; and performing all labor and operations for completion of Work as specified in the Contract Documents.

#### **SECURE AREA ACCESS RESTRICTIONS DURING CONSTRUCTION**

The secure area is defined as the area along the south side of the terminal building (behind the security fence). Work on the roof can continue uninterrupted without restriction.

1. All Contractor personnel must be out of the secure area 30 minutes prior to flight arrival (Ravn is the only carrier) and remain out of the secure area until the flight leaves (approximately 1 to 1.5 hours total time).
2. Flight schedules change and contractor must check with the carrier for the actual schedule. Generally, there is a morning arrival flight that flexes from 6:42 to 7:42 am, then an

arrival around 10:15 to 10:30 am, then arrival around 3:30 pm, then the last flight around 7:30 pm.

3. Personnel must wear safety vests while in the secure areas.
4. Equipment can be left in the secure area but must be out of the way of all flight operations.
5. All gates must be closed and locked at all times.

## **LAYDOWN/STAGING AREA**

The City will provide areas west of the building (long-term parking area) and east of the building (rental car area) for storage of equipment and materials. Contractor shall coordinate with the project inspector to define these areas during the preconstruction conference.

## **LIABILITY EXCLUSION**

The City of Homer is not liable for damages or claims from damages arising from any Contractor's performance or activities under the terms of this contract. The Contractor shall defend, indemnify, and hold harmless the City from all claims, actions, costs, damages, or expenses of any nature whatsoever by reason of the acts or omissions of the City in connection with the performance of this contract; except those damages which may be caused by the sole negligence of the City.

## **SCHEDULE**

Contractor will be required to provide a detailed project schedule to the City at the Pre-Construction Conference.

## **INSURANCE REQUIREMENTS**

The Contractor shall provide the following types of insurance prior to starting work (see General Conditions - Article 6.18 – Insurance). All Insurance Certificates shall name "City of Homer, Alaska" as an additionally insured party:

- |  |   |
|--|---|
| <b>1. <u>Worker's Compensation</u></b>   | <b><u>Minimum Limits</u></b>                      |
| Employer's Liability and Workers' Compensation as required by Alaska State Workers' Compensation Statutes. | Statutory<br>(no less than \$100K per occurrence) |
| <b>2. <u>Comprehensive General Liability</u></b>   | <b><u>Minimum Limits</u></b>                      |
| Single Limit   | \$1,000,000                                       |
| Aggregate  | \$2,000,000                                       |
| • Bodily Injury & Property Damage Liability  |   |
| • Premises Operations  |   |
| • Blanket Contractual  |   |
| • Broad Form Property Damage   |   |
| • Personal Injury  |   |
| • Independent Contractors  |   |

<b>3. <u>Comprehensive Automobile Liability</u></b>	<b><u>Minimum Limits</u></b>
Bodily Injury and Property Damage, including All owned, hired and non-owned vehicles	\$1,000,000

**VIOLATION AND BREACH OF CONTRACT**

Administrative, contractual, or legal remedies in instances where the Contractor violates or breaches contract terms or either party terminates for cause or convenience are contained in the General Conditions of the City of Homer Standard Construction Specifications 2011 which provide for such procedures, sanctions and penalties as may be appropriate. See Section 5.30, 5.31., 5.32, and 5.34 of the General Conditions and liquidated damages amount in the contract.

**COMPLIANCE WITH STATE AND FEDERAL ENVIRONMENTAL REGULATIONS**

Contractor shall comply with all applicable standards, orders, or requirements issued under section 306 of the Clean Air Act (42 U.S.C. 1857(h)), section 508 of the Clean Water Act (33 U.S.C. 1368), Executive Order 11738, and Environmental Protection Agency regulations (40 CFR part 15).

**VIII. Submittals**  
(Due within two (2) days after bid)

# CONTRACTOR'S QUESTIONNAIRE

## NOTICE TO CONTRACTORS

Prior to Award, this questionnaire shall be completely filled out for the project upon which a bid is submitted.

### A. FINANCIAL

1. Have you ever failed to complete a contract on account of insufficient resources? \_\_\_\_\_  
\_\_\_\_\_
2. Have you made sufficient arrangements to finance the work? \_\_\_\_\_  
If so, with whom and for what amount? \_\_\_\_\_  
\_\_\_\_\_  
If so, with what company? \_\_\_\_\_

### B. EQUIPMENT

1. Set forth below the equipment which you have available for the work which you propose to do. This equipment should be listed in detail (General statements will not be accepted).

<u>NO.</u>	<u>ITEMS</u>	<u>TYPE</u>	<u>SIZE/CAPACITY</u>	<u>PRESENT VALUE</u>

2. Do you thoroughly understand that in case the contract is awarded to you, you may be required to use any or all of the equipment listed on the work covered by this contract?  
\_\_\_\_\_
3. Do you propose to purchase any equipment for use on this project should contract be awarded to you? If so, state type, quantity and approximate cost.  
\_\_\_\_\_
4. Do you propose to rent any equipment for this work? \_\_\_\_\_  
If so, state type, quantity, and reason for renting. \_\_\_\_\_  
\_\_\_\_\_  
\_\_\_\_\_
5. Have you made contracts or received firm offers for all necessary materials with the prices used in preparing your proposal? \_\_\_\_\_



6. Do you intend to plan to subcontract any of the work? \_\_\_\_\_  
If so, what types or portions of the work. \_\_\_\_\_  
Approximate value \$ \_\_\_\_\_ Percent of total bid \_\_\_\_\_

**C. EXPERIENCE**

1. How many years has your organization been in business as a general contractor under your present business name? \_\_\_\_\_
2. How many years experience in construction work has your organization had:  
a) as a General Contractor \_\_\_\_\_.  
b) as a Subcontractor \_\_\_\_\_.
3. List previous contracts you have completed of a similar nature to this proposed contract:  
a) \_\_\_\_\_  
b) \_\_\_\_\_  
c) \_\_\_\_\_  
d) \_\_\_\_\_  
e) \_\_\_\_\_
4. List projects which you currently have under contract or expect to have under contract during the life of this contract:  
a) \_\_\_\_\_  
b) \_\_\_\_\_  
c) \_\_\_\_\_

Use additional sheets as necessary.

5. List your staff you plan to use on this project and the position they will fill for this project (include managerial and clerical personnel that will provide support services).

**STAFF MEMBER**

**POSITION**

_____	_____
_____	_____
_____	_____
_____	_____
_____	_____

Signature: \_\_\_\_\_

Title: \_\_\_\_\_

## **JOINT VENTURE**

1. Joint Venture Agreement
2. A statement signed by authorized person of each party to the joint venture.
3. Each party to the joint venture shall comply with the requirements for corporations, partnerships or individuals, as applicable.

## **PARTNERSHIP**

1. Partnership Agreement
2. Statement signed by all partners granting authority to the partner signing the Bid.

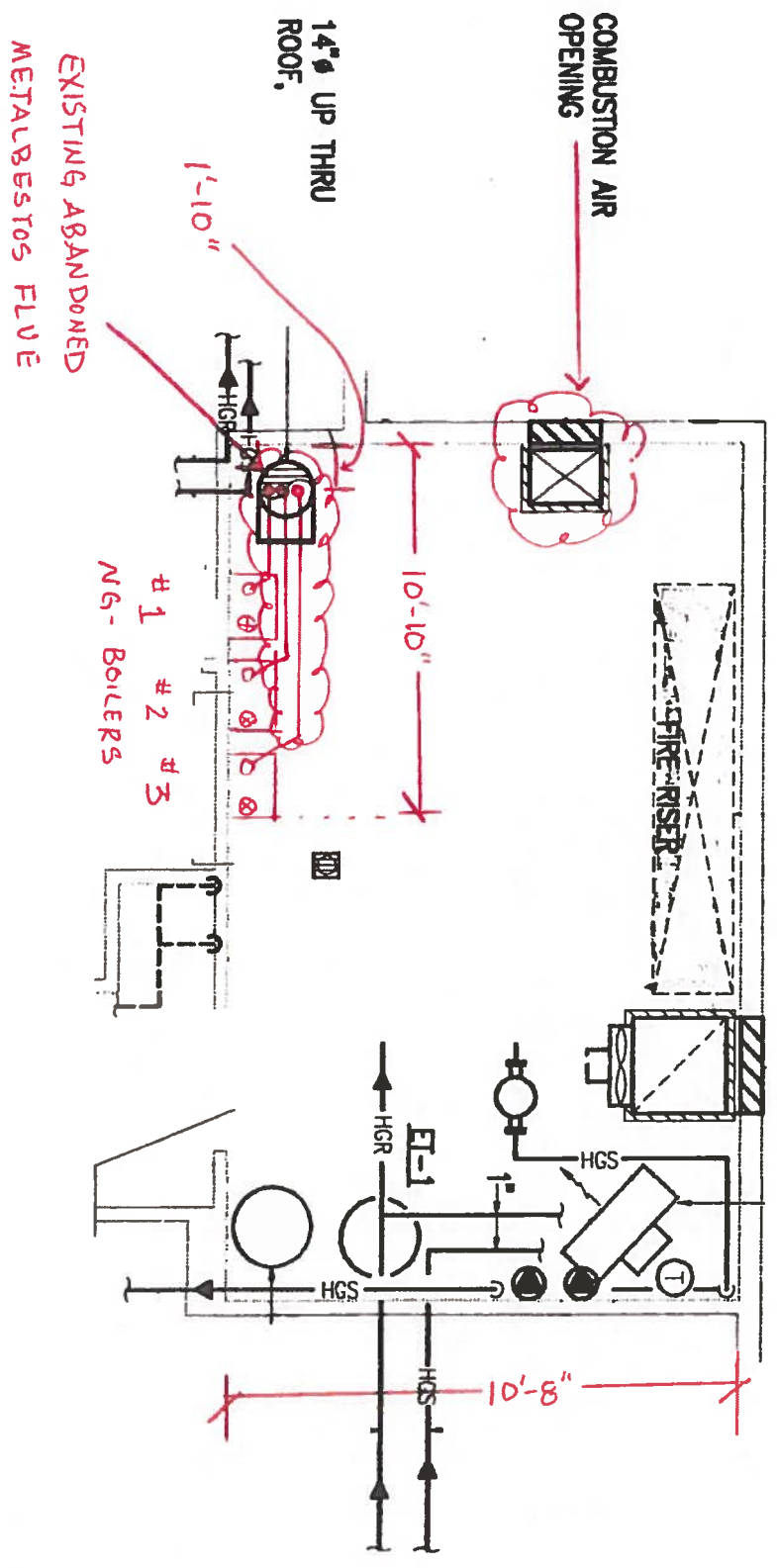
## **CORPORATIONS**

1. Articles of Incorporation – **most recent.**
2. By-Laws – **most recent.**
3. Resolution of the Board of Directors granting the authority to the officer signing on behalf of the corporation.

## IX. Appendices

EXISTING MECH. ROOM

DEMO



ENLARGED MECHANICAL ROOM PLAN - NTS

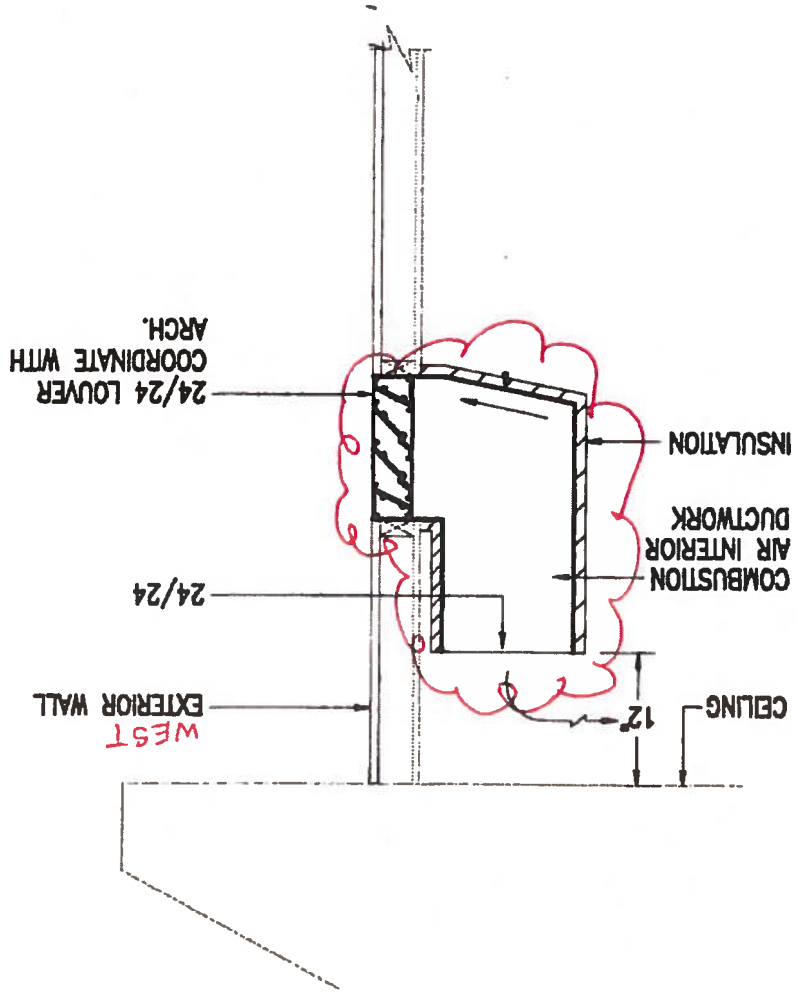
1/4" = 1'-0"



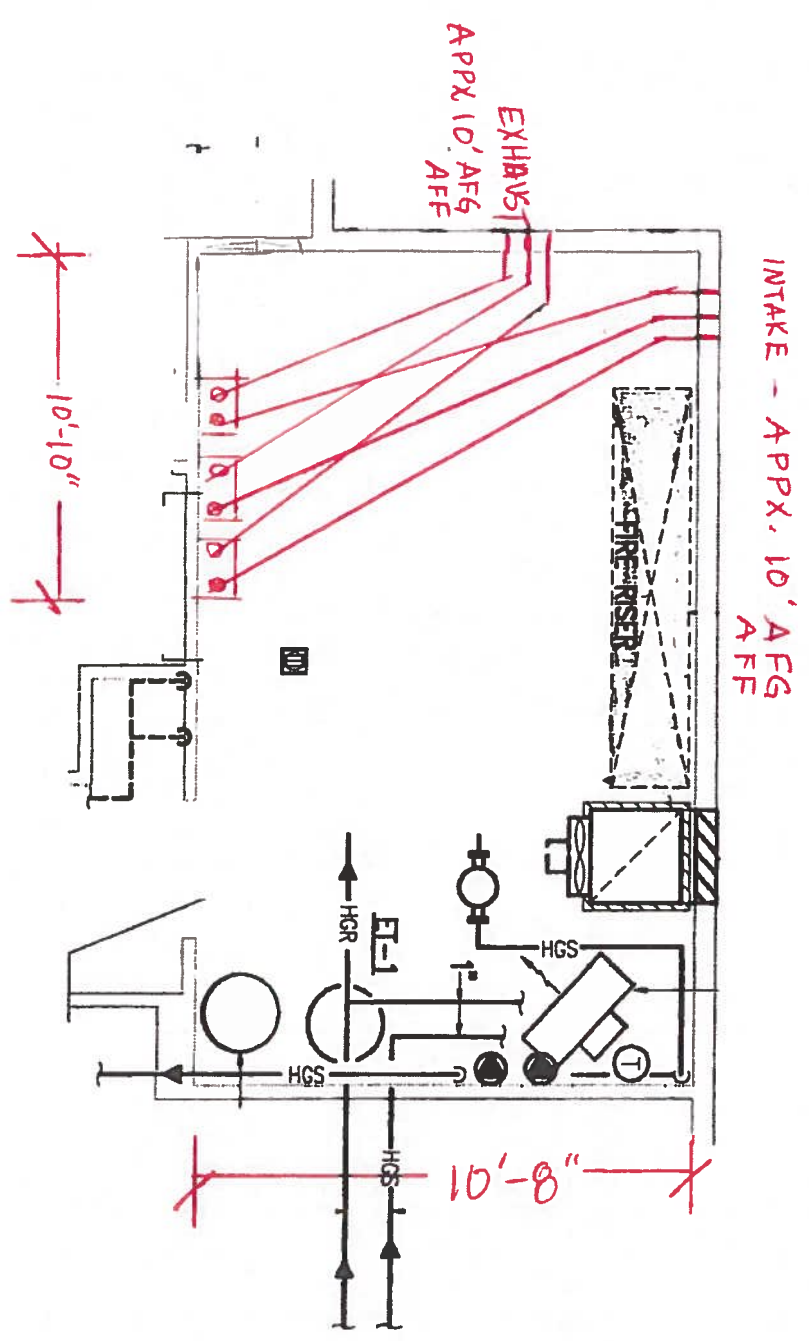
# COMBUSTION AIR DETAIL

NO SCALE

DEMO DUCT INSULATION  
DEMO DUCT  
DEMO LOUVER



NEW INTAKE/EXHAUST SIDENAIL LOCATIONS  
PIPE ROUTING BY CONTRACTOR - TO LOCATIONS



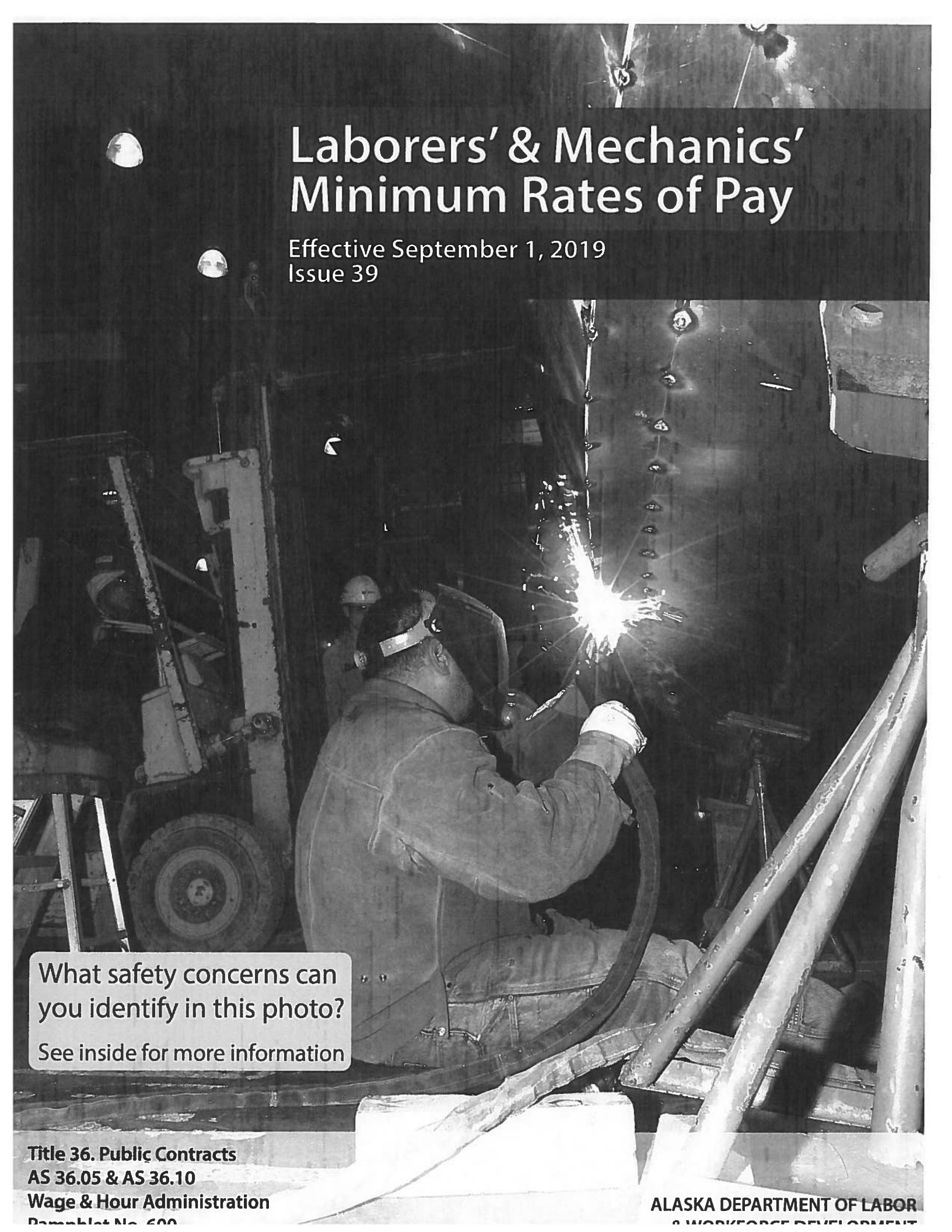
ENLARGED MECHANICAL ROOM PLAN - NTS

1/4" = 1'-0"



# Laborers' & Mechanics' Minimum Rates of Pay

Effective September 1, 2019  
Issue 39



What safety concerns can you identify in this photo?

See inside for more information

**Safety note: When watching a welding job, remember to stay out of the direct line of arc from the welder.**





THE STATE  
of **ALASKA**  
GOVERNOR MICHAEL J. DUNLEAVY

Department of Labor and  
Workforce Development

Office of the Commissioner

Post Office Box 111149  
Juneau, Alaska 99811  
Main: 907.465.2700  
fax: 907.465-2784

September 1, 2019

**TO ALL CONTRACTING AGENCIES:**

At the Alaska Department of Labor and Workforce Development, our goal is putting Alaskans to work. This pamphlet is designed to help contractors awarded public construction contracts understand the most significant laws of the State of Alaska pertaining to prevailing wage and resident hire requirements.

This pamphlet identifies current prevailing wage rates and resident hire classifications for public construction contracts (any construction projects awarded for the State of Alaska or its political subdivisions, such as local governments and certain non-profit organizations). Because these rates may change in a subsequent determination, please be sure you are using the appropriate rates. The rates published in this edition become effective September 1, 2019.

The prevailing wage rates contained in this pamphlet are applicable to public construction projects with a final bid date of September 11, 2019, or later. As the law now provides, these rates will remain stable during the life of a contract or for 24 calendar months, whichever is shorter. **The 24-month period begins on the date the prime contract is awarded.** Upon expiration of the initial 24-month period, the latest wage rates issued by the department shall become effective for a subsequent 24-month period or until the original contract is completed, whichever occurs first. This process shall be repeated until the original contract is completed.

The term "original contract" means the signed contract that resulted from the original bid and any amendments, including changes of work scope, additions, extensions, change orders, and other instruments agreed to by the parties that have not been subject to subsequent open bid procedures.

If a higher federal rate is required due to partial federal funding or other federal participation, the higher rate must be paid.

For additional copies of this pamphlet go to: <http://labor.state.ak.us/lss/pamp600.htm>

For questions regarding prevailing wage or employment preference requirements, please contact the nearest Wage and Hour office. These offices are listed on Page xi.

Sincerely,

A handwritten signature in black ink, appearing to read "Tamika L. Ledbetter".

Dr. Tamika L. Ledbetter  
Commissioner

- This page intentionally left blank -

# Table of Contents

## Excerpts from Alaska Law

Sec. 36.05.005. Applicability.....	iv
Sec. 36.05.010. Wage rates on public construction.....	iv
Sec. 36.05.040. Filing schedule of employees, wages paid and other information.....	iv
Sec. 36.05.045. Notice of work and completion; withholding of payment.....	iv
Sec. 36.05.060. Penalty for violation of this chapter.....	v
Sec. 36.05.070. Wage rates in specifications and contracts for public works.....	v
Sec. 36.05.080. Failure to pay agreed wages.....	v
Sec. 36.05.090. Payment of wages from withheld payments and listing contractors who violate contracts.....	v
Sec. 36.05.900. Definition.....	vi

## Excerpts from Alaska Administrative Code

8 AAC 30.051. Purpose.....	vi
8 AAC 30.052. Board and lodging; remote sites.....	vi
8 AAC 30.054. Per diem instead of board and lodging.....	vi
8 AAC 30.056. Alternative arrangement.....	vii
8 AAC 30.900. General definitions (selected excerpts).....	vii

## Additional Information

Per Diem.....	vii
Laborer Classification Clarification.....	viii
Apprentice Rates.....	ix
Fringe Benefit Plans.....	ix
Special Prevailing Wage Rate Determination.....	ix
Alaska Employment Preference Information.....	x
Labor Standards and Safety Notice Requests.....	xi
Debarment List.....	xi

**Wage Rates** ..... Pages 1-26

**Note to Readers:** The statutes and administrative regulations listed in this publication were taken from the official codes, as of the effective date of the publication. However, there may be errors or omissions that have not been identified and changes that occurred after the publication was printed. This publication is intended as an informational guide only and is not intended to serve as a precise statement of the statutes and regulations of the State of Alaska. To be certain of current laws and regulations, please refer to the official codes.

## EXCERPTS FROM ALASKA LAW

### **Sec. 36.05.005. Applicability.**

This chapter applies only to a public construction contract that exceeds \$25,000.

### **Sec. 36.05.010. Wage rates on public construction.**

A contractor or subcontractor who performs work on a public construction contract in the state shall pay not less than the current prevailing rate of wages for work of a similar nature in the region in which the work is done. The current prevailing rate of wages is that contained in the latest determination of prevailing rate of wages issued by the Department of Labor and Workforce Development at least 10 days before the final date for submission of bids for the contract. The rate shall remain in effect for the life of the contract or for 24 calendar months, whichever is shorter. At the end of the initial 24-month period, if new wage determinations have been issued by the department, the latest wage determination shall become effective for the next 24-month period or until the contract is completed, whichever occurs first. This process shall be repeated until the contract is completed.

### **Sec. 36.05.040. Filing schedule of employees, wages paid, and other information.**

All contractors or subcontractors who perform work on a public construction contract for the state or for a political subdivision of the state shall, before the Friday of every second week, file with the Department of Labor and Workforce Development a sworn affidavit for the previous reporting period, setting out in detail the number of persons employed, wages paid, job classification of each employee, hours worked each day and week, and other information on a form provided by the Department of Labor and Workforce Development.

### **Sec. 36.05.045. Notice of work and completion; withholding of payment.**

- (a) Before commencing work on a public construction contract, the person entering into the contract with a contracting agency shall designate a primary contractor for purposes of this section. Before work commences, the primary contractor shall file a notice of work with the Department of Labor and Workforce Development. The notice of work must list work to be performed under the public construction contract by each contractor who will perform any portion of work on the contract and the contract price being paid to each contractor. The primary contractor shall pay all filing fees for each contractor performing work on the contract, including a filing fee based on the contract price being paid for work performed by the primary contractor's employees. The filing fee payable shall be the sum of all fees calculated for each contractor. The filing fee shall be one percent of each contractor's contract price. The total filing fee payable by the primary contractor under this subsection may not exceed \$5,000. In this subsection, "contractor" means an employer who is using employees to perform work on the public construction contract under the contract or a subcontract.
- (b) Upon completion of all work on the public construction contract, the primary contractor shall file with the Department of Labor and Workforce Development a notice of completion together with payment of any additional filing fees owed due to increased contract amounts. Within 30 days after the department's receipt of the primary contractor's notice of completion, the department shall inform the contracting agency of the amount, if any, to be withheld from the final payment.
- (c) A contracting agency
  - (1) may release final payment of a public construction contract to the extent that the agency has received verification from the Department of Labor and Workforce Development that
    - (A) the primary contractor has complied with (a) and (b) of this section;
    - (B) the Department of Labor and Workforce Development is not conducting an investigation under this title; and
    - (C) the Department of Labor and Workforce Development has not issued a notice of a violation of this chapter to the primary contractor or any other contractors working on the public construction contract; and

- (2) shall withhold from the final payment an amount sufficient to pay the department's estimate of what may be needed to compensate the employees of any contractors under investigation on this construction contract, and any unpaid filing fees.
- (d) The notice and filing fee required under (a) of this section may be filed after work has begun if
  - (1) The public construction contract is for work undertaken in immediate response to an emergency; and
  - (2) The notice and fees are filed not later than 14 days after the work has begun.
- (e) A false statement made on a notice required by this section is punishable under AS 11.56.210.

**Sec. 36.05.060. Penalty for violation of this chapter.**

A contractor who violates this chapter is guilty of a misdemeanor and upon conviction is punishable by a fine of not less than \$100 nor more than \$1,000, or by imprisonment for not less than 10 days nor more than 90 days, or by both. Each day a violation exists constitutes a separate offense.

**Sec. 36.05.070. Wage rates in specifications and contracts for public works.**

- (a) The advertised specifications for a public construction contract that requires or involves the employment of mechanics, laborers, or field surveyors must contain a provision stating the minimum wages to be paid various classes of laborers, mechanics, or field surveyors and that the rate of wages shall be adjusted to the wage rate under AS 36.05.010.
- (b) Repealed by §17 ch 142 SLA 1972.
- (c) A public construction contract under (a) of this section must contain provisions that
  - (1) the contractor or subcontractors of the contractor shall pay all employees unconditionally and not less than once a week;
  - (2) wages may not be less than those stated in the advertised specifications, regardless of the contractual relationship between the contractor or subcontractors and laborers, mechanics, or field surveyors;
  - (3) the scale of wages to be paid shall be posted by the contractor in a prominent and easily accessible place at the site of the work;
  - (4) the state or a political subdivision shall withhold so much of the accrued payments as is necessary to pay to laborers, mechanics, or field surveyors employed by the contractor or subcontractors the difference between
    - (A) the rates of wages required by the contract to be paid laborers, mechanics, or field surveyors on the work; and
    - (B) the rates of wages in fact received by laborers, mechanics, or field surveyors.

**Sec. 36.05.080. Failure to pay agreed wages.**

Every contract within the scope of AS 36.05.070 shall contain a provision that if it is found that a laborer, mechanic, or field surveyor employed by the contractor or subcontractor has been or is being paid a rate of wages less than the rate of wages required by the contract to be paid, the state or its political subdivision may, by written notice to the contractor, terminate the contractor's right to proceed with the work or the part of the work for which there is a failure to pay the required wages and to prosecute the work to completion by contract or otherwise, and the contractor and the contractor's sureties are liable to the state or its political subdivision for excess costs for completing the work.

**Sec. 36.05.090. Payment of wages from withheld payments and listing contractors who violate contracts.**

- (a) The state disbursing officer in the case of a state public construction contract and the local fiscal officer in the case of a political subdivision public construction contract shall pay directly to laborers, mechanics, or field surveyors from accrued payments withheld under the terms of the contract the wages due laborers, mechanics, or field surveyors under AS 36.05.070.
- (b) The state disbursing officer or the local fiscal officer shall distribute to all departments of the state government and to all political subdivisions of the state a list giving the names of persons who have disregarded their obligations to employees. A person appearing on this list and a firm, corporation, partnership, or association in which the person has an interest may not work as a contractor or

subcontractor on a public construction contract for the state or a political subdivision of the state until three years after the date of publication of the list. If the accrued payments withheld under the contract are insufficient to reimburse all the laborers, mechanics, or field surveyors with respect to whom there has been a failure to pay the wages required under AS 36.05.070, the laborers, mechanics, or field surveyors have the right of action or intervention or both against the contractor and the contractor's sureties conferred by law upon persons furnishing labor or materials, and in the proceedings it is not a defense that the laborers, mechanics, or field surveyors accepted or agreed to accept less than the required rate of wages or voluntarily made refunds.

**Sec. 36.05.900. Definition.**

In this chapter, "contracting agency" means the state or a political subdivision of the state that has entered into a public construction contract with a contractor.

**EXCERPTS FROM ALASKA ADMINISTRATIVE CODE**

\*\*\*Notice: Regulations relating to board and lodging and per diem went into effect on November 25, 2018. The new regulations are excerpted here\*\*\*

**8 AAC 30.051. Purpose.** The purpose of 8 AAC 30.052 – 8 AAC 30.056 is to ensure that wages paid to laborers, mechanics, and field surveyors do not fall below the prevailing rate of pay.

**8 AAC 30.052. Board and lodging; remote sites.** (a) A contractor on a public construction project located 65 or more road miles from the international airport closest to the project area in either Fairbanks, Juneau, or Anchorage, or that is inaccessible by road in a two-wheel drive vehicle, shall provide adequate board and lodging to each laborer, mechanic, or field surveyor while the person is employed on the project. If commercial lodging facilities are not available, the contractor shall provide temporary lodging facilities. Lodging facilities must comply with all applicable state and federal laws. For a highway project, the location of the project is measured from the midpoint of the project.

(b) A contractor is not required to provide board and lodging:

(1) to a laborer, mechanic, or field surveyor who is a domiciled resident of the project area; or

(2) on a laborer, mechanic, or field surveyor's scheduled days off, when the person can reasonably travel between the project and the person's permanent residence; for the purposes of this paragraph, "scheduled day off" means a day in which a person does not perform work on-site, is not required to remain at or near the job location for the benefit of the contractor, and is informed of the day off at least seven days before the day off.

(c) Upon a contractor's written request, the commissioner may waive the requirements of (a) of this section where:

(1) the project is inaccessible by road in a two-wheel drive vehicle, but the laborer, mechanic, or field surveyor can reasonably travel between the project and the person's permanent residence within one hour; or

(2) a laborer, mechanic, or field surveyor is not a domiciled resident of the project area, but has established permanent residence, with the intent to remain indefinitely, within 65 road miles of the project, or for a highway project, the mid-point of the project.

**8 AAC 30.054. Per diem instead of board and lodging.** (a) A contractor may pay a laborer, mechanic, or field surveyor per diem instead of providing board and lodging, when the following conditions are met:

(1) the department determines that per diem instead of board and lodging is an established practice for the work classification; the department shall publish and periodically revise its determinations in the pamphlet *Laborers' and Mechanics' Minimum Rates of Pay*;

(2) the contractor pays each laborer, mechanic, or field surveyor the appropriate per diem rate as published and periodically revised in the pamphlet *Laborers' and Mechanics' Minimum Rates of Pay*; and

(3) the contractor pays the per diem to each laborer, mechanic, or field surveyor on the same day that wages are paid.

(b) A contractor may not pay per diem instead of board and lodging on a highway project located

- (1) west of Livengood on the Elliot Highway, AK-2;
- (2) on the Dalton Highway, AK-11;
- (3) north of milepost 20 on the Taylor Highway, AK-5;
- (4) east of Chicken on the Top of the World Highway; or
- (5) south of Tetlin Junction to the Alaska-Canada border on the Alaska Highway, AK-2.

**8 AAC 30.056. Alternative arrangement.** Upon a contractor's written request, the commissioner may approve an alternative board and lodging or per diem arrangement, provided

- (1) the arrangement does not reduce the laborer, mechanic, or field surveyor's wages below the prevailing wage rate; and
- (2) the laborer, mechanic, or field surveyor voluntarily enters into and signs the written arrangement; a labor organization representing laborers, mechanics, or field surveyors may enter into the written agreement on their behalf.

**8 AAC 30.900. General definitions** (selected excerpts only):

In this chapter and in AS 36

(22) "domiciled resident" means a person living within 65 road miles of a public construction project, or in the case of a highway project, the mid-point of the project, for at least 12 consecutive months prior to the award of the public construction project;

(23) "employed on the project" means the time period from the date the laborer, mechanic, or field surveyor first reports on-site to the project through the final date the person reports on-site to the project.

## **ADDITIONAL INFORMATION**

### **PER DIEM**

**Notice:** New regulations relating to board and lodging and per diem went into effect on November 25, 2018. The regulations provide a comprehensive set of requirements for the provision of board and lodging or per diem for workers on remote projects. Please refer to Alaska Administrative Code 8 AAC Chapter 30 and read the chapter carefully.

The Alaska Department of Labor and Workforce Development has determined that per diem is an established work practice for certain work classifications. These classifications are indicated throughout the Pamphlet by an asterisk (\*) under the classification title. If all of the conditions of 8 AAC 30.054 are met, an employer may pay workers in these classifications per diem instead of providing board and lodging on a remote project.

**Per Diem Rate:** As of May 1<sup>st</sup>, 2019, the minimum per diem rate is \$100.00 per day, or part thereof, the worker is employed on the project. In the event that a contractor provides lodging facilities, but no meals, the department will accept a payment of \$48 per day for meals to meet the per diem requirements.

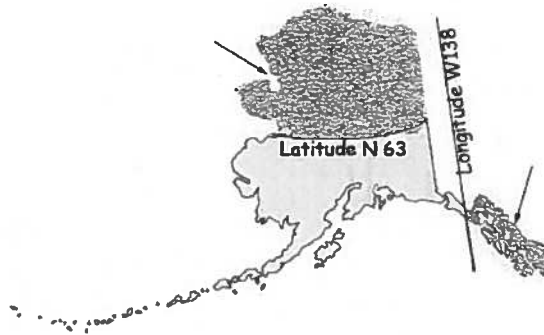
**LABORER CLASSIFICATION CLARIFICATION**

The laborer rates categorized in class code S1201-S1206 apply in one area of Alaska; the area that is south of N63 latitude and west of W138 Longitude. The laborer rates categorized in class code N1201-N1206 apply in two areas of Alaska; the Alaska areas north of N63 latitude and east of W138 longitude. The following graphic representations should assist with clarifying the applicable wage rate categories:

S1201-  
S1206



N1201-  
N1206





### **APPRENTICE RATES**

Apprentice rates at less than the minimum prevailing rates may be paid to apprentices according to an apprentice program which has been registered and approved by the Commissioner of the Alaska Department of Labor and Workforce Development in writing or according to a bona fide apprenticeship program registered with the U.S. Department of Labor, Office of Apprenticeship Training. **Any employee listed on a payroll at an apprentice wage rate who is not registered as above shall be paid the journeyman prevailing minimum wage in that work classification.** Wage rates are based on prevailing crew makeup practices in Alaska and apply to work performed regardless of either the quality of the work performed by the employee or the titles or classifications which may be assigned to individual employees.

### **FRINGE BENEFIT PLANS**

Contractors/subcontractors may compensate fringe benefits to their employees in any one of three methods. The fringe benefits may be paid into a union trust fund, into an approved benefit plan, or paid directly on the paycheck as gross wages.

Where fringe benefits are paid into approved plans, funds, or programs including union trust funds, the payments must be contributed at least monthly. If contractors submit their own payroll forms and are paying fringe benefits into approved plans, funds, or programs, the employer's certification must include, in addition to those requirements of 8 AAC 30.020(c), a statement that fringe benefit payments have been or will be paid at least monthly. Contractors who pay fringe benefits to a plan must ensure the plan is one approved by the Internal Revenue Service and that the plan meets the requirements of 8 AAC 30.025 (eff. 3/2/08) in order for payments to be credited toward the prevailing wage obligation.

### **SPECIAL PREVAILING WAGE RATE DETERMINATION**

Special prevailing wage rate determinations may be requested for special projects or a special worker classification if the work to be performed does not conform to traditional public construction for which a prevailing wage rate has been established under 8 AAC 30.050(a) of this section. Requests for special wage rate determinations must be in writing and filed with the Commissioner at least 30 days before the award of the contract. An applicant for a special wage rate determination shall have the responsibility to support the necessity for the special rate. An application for a special wage rate determination filed under this section must contain:

- (1) a specification of the contract or project on which the special rates will apply and a description of the work to be performed;
- (2) a brief narrative explaining why special wage rates are necessary;
- (3) the job class or classes involved;
- (4) the special wage rates the applicant is requesting, including survey or other relevant wage data to support the requested rates;
- (5) the approximate number of employees who would be affected; and
- (6) any other information which might be helpful in determining if special wage rates are appropriate.

Requests made pursuant to the above should be addressed to:

Director  
Alaska Department of Labor and Workforce Development  
Labor Standards and Safety Division  
Wage and Hour Administration  
P.O. Box 111149  
Juneau, AK 99811-1149

-or-

Email: [statewide.wagehour@alaska.gov](mailto:statewide.wagehour@alaska.gov)

DEPARTMENT OF LABOR and WORKFORCE DEVELOPMENT  
ALASKA EMPLOYMENT PREFERENCE INFORMATION

By authority of AS 36.10.150 and 8 AAC 30.064, the Commissioner of Labor and Workforce Development has determined the State of Alaska to be a Zone of Underemployment. A Zone of Underemployment requires that Alaska residents who are eligible under AS 36.10.140 be given a minimum of 90 percent employment preference on public works contracts throughout the state in certain job classifications. **This 90 percent Alaska resident hiring preference applies on a project-by-project, craft-by-craft or occupational basis and must be met each workweek by each contractor/subcontractor in each of the following classifications:**

Boilermakers	Electricians	Laborers	Roofers
Bricklayers	Engineers & Architects	Mechanics	Sheet Metal Workers
Carpenters	Equipment Operators	Millwrights	Surveyors
Cement Masons	Foremen & Supervisors	Painters	Truck Drivers
Culinary Workers	Insulation Workers	Piledriving Occupations	Tug Boat Workers
	Ironworkers	Plumbers & Pipefitters	Welders

This determination became effective July 1, 2019, and remains in effect through June 30, 2021. This determination will be applied to projects with a bid submission deadline on or after July 1, 2019 and to projects previously covered by the 2017 Alaska employment preference determination. This will afford contractors an opportunity to consider the impacts of Alaska resident hire in their bids.

The first person on a certified payroll in any classification is called the "first worker" and is not required to be an Alaskan resident. However, once the contractor adds any more workers in the classification, then all workers in the classification are counted, and the 90 percent calculation is applied to compute the number of required Alaskans to be in compliance. To compute the number of Alaskan residents required in a workweek in a particular classification, multiply the total number of workers in the classification by 90 percent. The result is then rounded down to the nearest whole number to determine the number of Alaskans that must be employed in that classification.

If a worker works in more than one classification during a week, the classification in which they spent the most time would be counted for employment preference purposes. If the time is split evenly between two classifications, the worker is counted in both classifications.

If you have difficulty meeting the 90 percent requirement, an approved waiver must be obtained before a non-Alaska resident is hired who would put the contractor/subcontractor out of compliance (8 AAC 30.081 (e) (f)). The waiver process requires proof of an adequate search for qualified Alaskan workers. Qualified Alaska residents identified through the search must be hired before waivers for non-resident workers may be granted. To apply for a waiver, contact the nearest Wage and Hour Office for instructions.

Here is an example to apply the 90 percent requirement to four boilermaker workers. Multiply four workers by 90% and drop the fraction ( $.90 \times 4 = 3.6 - .6 = 3$ ). The remaining number is the number of Alaskan resident boilermakers required to be in compliance in that particular classification for that week.

The penalties for being out of compliance are serious. AS 36.10.100 (a) states "A contractor who violates a provision of this chapter shall have deducted from amounts due to the contractor under the contract the prevailing wages which should have been paid to a displaced resident and these amounts shall be retained by the contracting agency." If a contractor/subcontractor is found to be out of compliance, penalties accumulate until they come into compliance.

Contractors are responsible for determining residency status. If you have difficulty determining whether a worker is an Alaska resident, you should contact the nearest Wage and Hour Office. Contact Wage and Hour in Anchorage at (907) 269-4900, in Fairbanks at (907) 451-2886, or in Juneau at (907) 465-4842.

**Alaska Department of Labor and Workforce Development  
Labor Standards and Safety Division  
Wage and Hour Administration  
Web site: <http://labor.state.ak.us/lss/pamp600.htm>**

**Anchorage**

1251 Muldoon Road, Suite 113  
Anchorage, Alaska 99504-2098  
Phone: (907) 269-4900

Email:  
[statewide.wagehour@alaska.gov](mailto:statewide.wagehour@alaska.gov)

**Juneau**

PO Box 111149  
Juneau, Alaska 99811  
Phone: (907) 465-4842

Email:  
[statewide.wagehour@alaska.gov](mailto:statewide.wagehour@alaska.gov)

**Fairbanks**

Regional State Office Building  
675 7<sup>th</sup> Ave., Station J-1  
Fairbanks, Alaska 99701-4593  
Phone: (907) 451-2886

Email:  
[statewide.wagehour@alaska.gov](mailto:statewide.wagehour@alaska.gov)

**LABOR STANDARDS AND SAFETY NOTICE REQUESTS**

If you would like to receive Wage and Hour Administration or Mechanical Inspection **regulation notices** or **publications information**, they are available via electronic mail, by signing up in the GovDelivery System, <https://public.govdelivery.com/accounts/AKDOL/subscriber/new> and selecting topics *LSS – Wage and Hour – Forms and Publications*, *LSS – Mechanical Inspection Regulations*, or *LSS – Wage and Hour Regulations*.

*Publications* are also available online at <http://labor.alaska.gov/lss/home.htm>

**DEBARMENT LIST**

**AS 36.05.090(b)** states that “the state disbursing officer or the local fiscal officer shall distribute to all departments of the state government and to all political subdivisions of the state a list giving the names of persons who have disregarded their obligations to employees.”

A person appearing on the following debarment list and a firm, corporation, partnership, or association in which the person has an interest may not work as a contractor or subcontractor on a public construction contract for the state or a political subdivision of the state for three years from the date of debarment.

Company Name

Debarment Expires

Tim Banach, Individual  
Boulder Creek Electric

February 23, 2021  
February 23, 2021

# Laborers' & Mechanics' Minimum Rates of Pay

Class Code	Classification of Laborers & Mechanics	BHR	H&W	PEN	TRN	Other	Benefits	THR
------------	--	-----	-----	-----	-----	-------	----------	-----

## Boilermakers

\*See per diem note on last page

<b>A0101</b>	Boilermaker (journeyman)	46.13	8.57	16.42	1.65	VAC 3.50	SAF 0.34	76.61
--------------	--------------------------	-------	------	-------	------	----------	----------	-------

## Bricklayers & Blocklayers

\*See per diem note on last page

<b>A0201</b>	Blocklayer	42.13	9.83	8.50	0.55	L&M 0.15	0.87	62.03
--------------	------------	-------	------	------	------	----------	------	-------

- Bricklayer
- Marble or Stone Mason
- Refractory Worker (Firebrick, Plastic, Castable, and Gunitite Refractory Applications)
- Terrazzo Worker
- Tile Setter

<b>A0202</b>	Tuck Pointer Caulker	42.13	9.83	8.50	0.55	L&M 0.15	0.87	62.03
--------------	----------------------	-------	------	------	------	----------	------	-------

Cleaner (PCC)

<b>A0203</b>	Marble & Tile Finisher	35.96	9.83	8.50	0.55	L&M 0.15	0.87	55.86
--------------	------------------------	-------	------	------	------	----------	------	-------

Terrazzo Finisher

<b>A0204</b>	Torginal Applicator	40.10	9.83	8.50	0.55	L&M 0.15	0.87	60.00
--------------	---------------------	-------	------	------	------	----------	------	-------

## Carpenters, Region I (North of 63 latitude)

\*See per diem note on last page

<b>N0301</b>	Carpenter (journeyman)	38.34	10.08	15.23	1.10	L&M 0.10	SAF 0.10	64.95
--------------	------------------------	-------	-------	-------	------	----------	----------	-------

Lather/Drywall/Acoustical

## Carpenters, Region II (South of N63 latitude)

\*See per diem note on last page

<b>S0301</b>	Carpenter (journeyman)	38.34	10.08	15.77	1.10	L&M 0.10	SAF 0.10	65.49
--------------	------------------------	-------	-------	-------	------	----------	----------	-------

Lather/Drywall/Acoustical

## Cement Masons, Region I (North of N63 latitude)

\*See per diem note on last page

Wage benefits key: BHR=basic hourly rate; H&W=health and welfare; IAF=industry advancement fund; LEG=legal fund; L&M=labor/management fund; PEN=pension fund; SAF=safety; SUI=supplemental unemployment insurance; S&L=SUI & LEG combined; TRN=training; THR=total hourly rate; VAC=vacation

**Cement Masons, Region I (North of N63 latitude)**

\*See per diem note on last page

<b>N0401</b>	Group I, including:	38.13	8.70	11.80	1.18	L&M 0.10	59.91
	Application of Sealing Compound						
	Application of Underlayment						
	Building, General						
	Cement Mason (journeyman)						
	Concrete						
	Concrete Paving						
	Curb & Gutter, Sidewalk						
	Curing of All Concrete						
	Grouting & Caulking of Tilt-Up Panels						
	Grouting of All Plates						
	Patching Concrete						
	Screed Pin Setter						
	Spackling/Skim Coating						
<b>N0402</b>	Group II, including:	38.13	8.70	11.80	1.18	L&M 0.10	59.91
	Form Setter						
<b>N0403</b>	Group III, including:	38.13	8.70	11.80	1.18	L&M 0.10	59.91
	Concrete Saw (self-powered)						
	Curb & Gutter Machine						
	Floor Grinder						
	Pneumatic Power Tools						
	Power Chipping & Bushing						
	Sand Blasting Architectural Finish						
	Screed & Rodding Machine Operator						
	Troweling Machine Operator						
<b>N0404</b>	Group IV, including:	38.13	8.70	11.80	1.18	L&M 0.10	59.91
	Application of All Composition Mastic						
	Application of All Epoxy Material						
	Application of All Plastic Material						
	Finish Colored Concrete						
	Gunite Nozzleman						
	Hand Powered Grinder						
	Tunnel Worker						
<b>N0405</b>	Group V, including:	38.13	8.70	11.80	1.18	L&M 0.10	59.91
	Plasterer						

Wage benefits key: BHR=basic hourly rate; H&W=health and welfare; IAF=industry advancement fund; LEG=legal fund; L&M=labor/management fund; PEN=pension fund; SAF=safety; SUI=supplemental unemployment insurance; S&L=SUI & LEG combined; TRN=training; THR=total hourly rate; VAC=vacation

**Cement Masons, Region II (South of N63 latitude)**  
 \*See per diem note on last page

						<b>L&amp;M</b>	
<b>S0401</b>	<b>Group I, including:</b>	<b>37.88</b>	<b>8.70</b>	<b>11.80</b>	<b>1.18</b>	<b>0.10</b>	<b>59.66</b>
	Application of Sealing Compound						
	Application of Underlayment						
	Building, General						
	Cement Mason (journeyman)						
	Concrete						
	Concrete Paving						
	Curb & Gutter, Sidewalk						
	Curing of All Concrete						
	Grouting & Caulking of Tilt-Up Panels						
	Grouting of All Plates						
	Patching Concrete						
	Screed Pin Setter						
	Spackling/Skim Coating						

<b>S0402</b>	<b>Group II, including:</b>	<b>37.88</b>	<b>8.70</b>	<b>11.80</b>	<b>1.18</b>	<b>0.10</b>	<b>59.66</b>
	Form Setter						

<b>S0403</b>	<b>Group III, including:</b>	<b>37.88</b>	<b>8.70</b>	<b>11.80</b>	<b>1.18</b>	<b>0.10</b>	<b>59.66</b>
	Concrete Saw (self-powered)						
	Curb & Gutter Machine						
	Floor Grinder						
	Pneumatic Power Tools						
	Power Chipping & Bushing						
	Sand Blasting Architectural Finish						
	Screed & Rodding Machine Operator						
	Troweling Machine Operator						

<b>S0404</b>	<b>Group IV, including:</b>	<b>37.88</b>	<b>8.70</b>	<b>11.80</b>	<b>1.18</b>	<b>0.10</b>	<b>59.66</b>
	Application of All Composition Mastic						
	Application of All Epoxy Material						
	Application of All Plastic Material						
	Finish Colored Concrete						
	Gunite Nozzleman						
	Hand Powered Grinder						
	Tunnel Worker						

<b>S0405</b>	<b>Group V, including:</b>	<b>37.88</b>	<b>8.70</b>	<b>11.80</b>	<b>1.18</b>	<b>0.10</b>	<b>59.66</b>
	Plasterer						

Wage benefits key: BHR=basic hourly rate; H&W=health and welfare; IAF=industry advancement fund; LEG=legal fund; L&M=labor/management fund; PEN=pension fund; SAF=safety; SUI=supplemental unemployment insurance; S&L=SUI & LEG combined; TRN=training; THR=total hourly rate; VAC=vacation

**Culinary Workers**

<b>A0501</b>	Baker/Cook	28.37	7.40	6.97		<b>LEG</b> 0.07	42.81
<b>A0503</b>	General Helper	25.05	7.40	6.97		<b>LEG</b> 0.07	39.49
	Housekeeper						
	Janitor						
	Kitchen Helper						
<b>A0504</b>	Head Cook	28.97	7.40	6.97		<b>LEG</b> 0.07	43.41
<b>A0505</b>	Head Housekeeper	25.45	7.40	6.97		<b>LEG</b> 0.07	39.89
	Head Kitchen Help						

**Dredgemen**

\*See per diem note on last page

<b>A0601</b>	Assistant Engineer	39.76	10.00	12.50	1.00	<b>L&amp;M</b> 0.10 0.05	63.41
	Craneman						
	Electrical Generator Operator (primary pump/power barge/dredge)						
	Engineer						
	Welder						
<b>A0602</b>	Assistant Mate (deckhand)	38.60	10.00	12.50	1.00	<b>L&amp;M</b> 0.10 0.05	62.25
<b>A0603</b>	Fireman	39.04	10.00	12.50	1.00	<b>L&amp;M</b> 0.10 0.05	62.69
<b>A0605</b>	Leverman Clamshell	42.29	10.00	12.50	1.00	<b>L&amp;M</b> 0.10 0.05	65.94
<b>A0606</b>	Leverman Hydraulic	40.53	10.00	12.50	1.00	<b>L&amp;M</b> 0.10 0.05	64.18
<b>A0607</b>	Mate & Boatman	39.76	10.00	12.50	1.00	<b>L&amp;M</b> 0.10 0.05	63.41
<b>A0608</b>	Oiler (dredge)	39.04	10.00	12.50	1.00	<b>L&amp;M</b> 0.10 0.05	62.69

**Electricians**

\*See per diem note on last page

<b>A0701</b>	Inside Cable Splicer	40.03	13.64	13.84	0.95	<b>L&amp;M</b> 0.20	<b>LEG</b> 0.15	68.81
--------------	----------------------	-------	-------	-------	------	------------------------	--------------------	-------

Wage benefits key: BHR=basic hourly rate; H&W=health and welfare; IAF=industry advancement fund; LEG=legal fund; L&M=labor/management fund; PEN=pension fund; SAF=safety; SUI=supplemental unemployment insurance; S&L=SUI & LEG combined; TRN=training; THR=total hourly rate; VAC=vacation

**Electricians**

\*See per diem note on last page

<b>A0702</b>	Inside Journeyman Wireman, including: Technicians (including use of drones in electrical construction)	39.70	13.64	14.08	0.95	L&M 0.20	LEG 0.15	68.72
<b>A0703</b>	Power Cable Splicer	56.05	13.64	18.87	0.95	L&M 0.20	LEG 0.15	89.86
<b>A0704</b>	Tele Com Cable Splicer	49.28	13.64	16.13	0.95	L&M 0.20	LEG 0.15	80.35
<b>A0705</b>	Power Journeyman Lineman, including: Power Equipment Operator Technician (including use of drones in electrical construction)	54.30	13.64	18.82	0.95	L&M 0.20	LEG 0.15	88.06
<b>A0706</b>	Tele Com Journeyman Lineman, including: Technician (including use of drones in telecommunications construction) Tele Com Equipment Operator	47.53	13.64	16.08	0.95	L&M 0.20	LEG 0.15	78.55
<b>A0707</b>	Straight Line Installer - Repairman	47.53	13.64	16.08	0.95	L&M 0.20	LEG 0.15	78.55
<b>A0708</b>	Powderman	52.30	13.64	18.76	0.95	L&M 0.20	LEG 0.15	86.00
<b>A0710</b>	Material Handler	26.57	13.07	4.80	0.15	L&M 0.15	LEG 0.15	44.89
<b>A0712</b>	Tree Trimmer Groundman	27.54	13.64	12.23	0.15	L&M 0.15	LEG 0.15	53.86
<b>A0713</b>	Journeyman Tree Trimmer	36.21	13.64	12.49	0.15	L&M 0.15	LEG 0.15	62.79
<b>A0714</b>	Vegetation Control Sprayer	39.66	13.64	12.59	0.15	L&M 0.15	LEG 0.15	66.34
<b>A0715</b>	Inside Journeyman Communications CO/PBX	38.28	13.64	13.79	0.95	L&M 0.20	LEG 0.15	67.01

**Elevator Workers**

\*See per diem note on last page

<b>A0802</b>	Elevator Constructor	40.06	15.58	17.51	0.62	L&M 0.42	VAC 4.44	78.63
<b>A0803</b>	Elevator Constructor Mechanic	57.23	15.58	17.51	0.62	L&M 0.42	VAC 6.35	97.71

Wage benefits key: BHR=basic hourly rate; H&W=health and welfare; IAF=industry advancement fund; LEG=legal fund; L&M=labor/management fund; PEN=pension fund; SAF=safety; SUI=supplemental unemployment insurance; S&L=SUI & LEG combined; TRN=training; THR=total hourly rate; VAC=vacation



**Heat & Frost Insulators/Asbestos Workers**

\*See per diem note on last page

<b>A0902</b>	Asbestos Abatement-Mechanical Systems	38.68	9.24	11.01	1.20	SAF 0.12	60.25
<b>A0903</b>	Asbestos Abatement/General Demolition All Systems	38.68	9.24	11.01	1.20	SAF 0.12	60.25
<b>A0904</b>	Insulator, Group II	38.68	9.24	11.01	1.20	SAF 0.12	60.25
<b>A0905</b>	Fire Stop	38.68	9.24	11.01	1.20	SAF 0.12	60.25

**Ironworkers**

\*See per diem note on last page

<b>A1101</b>	Ironworkers, including:	38.75	9.03	22.88	0.72	L&M 0.20	IAF 0.36	71.94
	Bender Operators							
	Bridge & Structural							
	Machinery Mover							
	Ornamental							
	Reinforcing							
	Rigger							
	Sheeter							
	Signalman							
	Stage Rigger							
	Toxic Haz-Mat Work							
	Welder							

<b>A1102</b>	Helicopter	39.75	9.03	22.88	0.72	L&M 0.20	IAF 0.36	72.94
--------------	------------	-------	------	-------	------	----------	----------	-------

Tower (energy producing windmill type towers to include nacelle and blades)

<b>A1103</b>	Fence/Barrier Installer	35.25	9.03	22.53	0.72	L&M 0.20	IAF 0.36	68.09
--------------	-------------------------	-------	------	-------	------	----------	----------	-------

Guard Rail Installer

<b>A1104</b>	Guard Rail Layout Man	35.99	9.03	22.53	0.72	L&M 0.20	IAF 0.36	68.83
--------------	-----------------------	-------	------	-------	------	----------	----------	-------

**Laborers (The Alaska areas north of N63 latitude and east of W138 longitude)**

\*See per diem note on last page

<b>N1201</b>	Group I, including:	30.71	8.70	17.31	1.30	L&M 0.20	LEG 0.20	58.42
--------------	---------------------	-------	------	-------	------	----------	----------	-------

Asphalt Worker (shovelman, plant crew)

Wage benefits key: BHR=basic hourly rate; H&W=health and welfare; IAF=industry advancement fund; LEG=legal fund; L&M=labor/management fund; PEN=pension fund; SAF=safety; SUI=supplemental unemployment insurance; S&L=SUI & LEG combined; TRN=training; THR=total hourly rate; VAC=vacation

**Laborers (The Alaska areas north of N63 latitude and east of W138 longitude)**

\*See per diem note on last page

					L&M	LEG	
<b>N1201</b>	<b>Group I, including:</b>	<b>30.71</b>	<b>8.70</b>	<b>17.31</b>	<b>1.30</b>	<b>0.20</b>	<b>0.20 58.42</b>
	Brush Cutter						
	Camp Maintenance Laborer						
	Carpenter Tender or Helper						
	Choke Setter, Hook Tender, Rigger, Signalman						
	Concrete Labor (curb & gutter, chute handler, curing, grouting, screeding)						
	Crusher Plant Laborer						
	Demolition Laborer						
	Ditch Digger						
	Dumpman						
	Environmental Laborer (hazard/toxic waste, oil spill)						
	Fence Installer						
	Fire Watch Laborer						
	Flagman						
	Form Stripper						
	General Laborer						
	Guardrail Laborer, Bridge Rail Installer						
	Hydro-seeder Nozzleman						
	Laborer, Building						
	Landscaper or Planter						
	Laying of Mortarless Decorative Block (retaining walls, flowered decorative block 4 feet or less - highway or landscape work)						
	Material Handler						
	Pneumatic or Power Tools						
	Portable or Chemical Toilet Serviceman						
	Pump Man or Mixer Man						
	Railroad Track Laborer						
	Sandblast, Pot Tender						
	Saw Tender						
	Slurry Work						
	Steam Cleaner Operator						
	Steam Point or Water Jet Operator						
	Storm Water Pollution Protection Plan Worker (SWPPP Worker - erosion and sediment control Laborer)						
	Tank Cleaning						
	Utiliwalk & Utilidor Laborer						
	Watchman (construction projects)						
	Window Cleaner						

					L&M	LEG	
<b>N1202</b>	<b>Group II, including:</b>	<b>31.71</b>	<b>8.70</b>	<b>17.31</b>	<b>1.30</b>	<b>0.20</b>	<b>0.20 59.42</b>

Burning & Cutting Torch

Wage benefits key: BHR=basic hourly rate; H&W=health and welfare; IAF=industry advancement fund; LEG=legal fund; L&M=labor/management fund; PEN=pension fund; SAF=safety; SUI=supplemental unemployment insurance; S&L=SUI & LEG combined; TRN=training; THR=total hourly rate; VAC=vacation

**Laborers (The Alaska areas north of N63 latitude and east of W138 longitude)**

\*See per diem note on last page

<b>N1202</b>	<b>Group II, including:</b>	<b>31.71</b>	<b>8.70</b>	<b>17.31</b>	<b>1.30</b>	<b>0.20</b>	<b>0.20</b>	<b>59.42</b>
--------------	-----------------------------	--------------	-------------	--------------	-------------	-------------	-------------	--------------

- Cement or Lime Dumper or Handler (sack or bulk)
- Certified Erosion Sediment Control Lead (CESCL Laborer)
- Choker Splicer
- Chucktender (wagon, air-track & hydraulic drills)
- Concrete Laborer (power buggy, concrete saws, pumpcrete nozzleman, vibratorman)
- Culvert Pipe Laborer
- Cured Inplace Pipelayer
- Environmental Laborer (asbestos, marine work)
- Floor Preparation, Core Drilling
- Foam Gun or Foam Machine Operator
- Green Cutter (dam work)
- Gunite Operator
- Hod Carrier
- Jackhammer/Chipping Gun or Pavement Breaker
- Laser Instrument Operator
- Laying of Mortarless Decorative Block (retaining walls, flowered decorative block over 4 feet - highway or landscape work)
- Mason Tender & Mud Mixer (sewer work)
- Pilot Car
- Pipelayer Helper
- Plasterer, Bricklayer & Cement Finisher Tender
- Powderman Helper
- Power Saw Operator
- Railroad Switch Layout Laborer
- Sandblaster
- Scaffold Building & Erecting
- Sewer Caulker
- Sewer Plant Maintenance Man
- Thermal Plastic Applicator
- Timber Faller, Chainsaw Operator, Filer
- Timberman

<b>N1203</b>	<b>Group III, including:</b>	<b>32.61</b>	<b>8.70</b>	<b>17.31</b>	<b>1.30</b>	<b>0.20</b>	<b>0.20</b>	<b>60.32</b>
--------------	------------------------------	--------------	-------------	--------------	-------------	-------------	-------------	--------------

- Bit Grinder
- Camera/Tool/Video Operator
- Guardrail Machine Operator
- High Rigger & Tree Topper
- High Scaler
- Multiplate

Wage benefits key: BHR=basic hourly rate; H&W=health and welfare; IAF=industry advancement fund; LEG=legal fund; L&M=labor/management fund; PEN=pension fund; SAF=safety; SUI=supplemental unemployment insurance; S&L=SUI & LEG combined; TRN=training; THR=total hourly rate; VAC=vacation

**Laborers (The Alaska areas north of N63 latitude and east of W138 longitude)**

\*See per diem note on last page

					L&M	LEG	
<b>N1203</b>	Group III, including:	32.61	8.70	17.31	1.30	0.20	60.32
	Plastic Welding						
	Slurry Seal Squeegee Man						
	Traffic Control Supervisor						
	Welding Certified (in connection with laborer's work)						

					L&M	LEG	
<b>N1204</b>	Group IIIA	35.89	8.70	17.31	1.30	0.20	63.60
	Asphalt Raker, Asphalt Belly Dump Lay Down						
	Drill Doctor (in the field)						
	Driller (including, but not limited to, wagon drills, air-track drills, hydraulic drills)						
	Pioneer Drilling & Drilling Off Tugger (all type drills)						
	Pipelayers						
	Powderman (Employee Possessor)						
	Storm Water Pollution Protection Plan Specialist (SWPPP Specialist)						
	Traffic Control Supervisor, DOT Qualified						

					L&M	LEG	
<b>N1205</b>	Group IV	20.28	8.70	17.31	1.30	0.20	47.99
	Final Building Cleanup						
	Permanent Yard Worker						

					L&M	LEG	
<b>N1206</b>	Group IIIB	39.68	5.99	17.31	1.30	0.20	64.68
	Federal Powderman (Responsible Person in Charge)						
	Grade Checking (setting or transferring of grade marks, line and grade, GPS, drones)						
	Stake Hopper						

**Laborers (The area that is south of N63 latitude and west of W138 longitude)**

\*See per diem note on last page

					L&M	LEG	
<b>S1201</b>	Group I, including:	30.71	8.70	17.31	1.30	0.20	58.42
	Asphalt Worker (shovelman, plant crew)						
	Brush Cutter						
	Camp Maintenance Laborer						
	Carpenter Tender or Helper						
	Choke Setter, Hook Tender, Rigger, Signalman						
	Concrete Labor (curb & gutter, chute handler, curing, grouting, screeding)						
	Crusher Plant Laborer						
	Demolition Laborer						
	Ditch Digger						

Wage benefits key: BHR=basic hourly rate; H&W=health and welfare; IAF=industry advancement fund; LEG=legal fund; L&M=labor/management fund; PEN=pension fund; SAF=safety; SUI=supplemental unemployment insurance; S&L=SUI & LEG combined; TRN=training; THR=total hourly rate; VAC=vacation

**Laborers (The area that is south of N63 latitude and west of W138 longitude)**

\*See per diem note on last page

						<b>L&amp;M</b>	<b>LEG</b>	
<b>S1201</b>	<b>Group I, including:</b>	<b>30.71</b>	<b>8.70</b>	<b>17.31</b>	<b>1.30</b>	<b>0.20</b>	<b>0.20</b>	<b>58.42</b>
	Dumpman							
	Environmental Laborer (hazard/toxic waste, oil spill)							
	Fence Installer							
	Fire Watch Laborer							
	Flagman							
	Form Stripper							
	General Laborer							
	Guardrail Laborer, Bridge Rail Installer							
	Hydro-seeder Nozzleman							
	Laborer, Building							
	Landscaper or Planter							
	Laying of Mortarless Decorative Block (retaining walls, flowered decorative block 4 feet or less - highway or landscape work)							
	Material Handler							
	Pneumatic or Power Tools							
	Portable or Chemical Toilet Serviceman							
	Pump Man or Mixer Man							
	Railroad Track Laborer							
	Sandblast, Pot Tender							
	Saw Tender							
	Slurry Work							
	Steam Cleaner Operator							
	Steam Point or Water Jet Operator							
	Storm Water Pollution Protection Plan Worker (SWPPP Worker - erosion and sediment control Laborer)							
	Tank Cleaning							
	Utiliwalk & Utilidor Laborer							
	Watchman (construction projects)							
	Window Cleaner							

						<b>L&amp;M</b>	<b>LEG</b>	
<b>S1202</b>	<b>Group II, including:</b>	<b>31.71</b>	<b>8.70</b>	<b>17.31</b>	<b>1.30</b>	<b>0.20</b>	<b>0.20</b>	<b>59.42</b>

- Burning & Cutting Torch
- Cement or Lime Dumper or Handler (sack or bulk)
- Certified Erosion Sediment Control Lead (CESCL Laborer)
- Choker Splicer
- Chucktender (wagon, air-track & hydraulic drills)
- Concrete Laborer (power buggy, concrete saws, pumpcrete nozzleman, vibratorman)
- Culvert Pipe Laborer
- Cured Inplace Pipelayer

Wage benefits key: BHR=basic hourly rate; H&W=health and welfare; IAF=industry advancement fund; LEG=legal fund; L&M=labor/management fund; PEN=pension fund; SAF=safety; SUI=supplemental unemployment insurance; S&L=SUI & LEG combined; TRN=training; THR=total hourly rate; VAC=vacation

**Laborers (The area that is south of N63 latitude and west of W138 longitude)**

\*See per diem note on last page

					<b>L&amp;M</b>	<b>LEG</b>	
<b>S1202</b>	<b>Group II, including:</b>	<b>31.71</b>	<b>8.70</b>	<b>17.31</b>	<b>1.30</b>	<b>0.20</b>	<b>59.42</b>
	Environmental Laborer (asbestos, marine work)						
	Floor Preparation, Core Drilling						
	Foam Gun or Foam Machine Operator						
	Green Cutter (dam work)						
	Gunite Operator						
	Hod Carrier						
	Jackhammer/Chipping Gun or Pavement Breaker						
	Laser Instrument Operator						
	Laying of Mortarless Decorative Block (retaining walls, flowered decorative block over 4 feet - highway or landscape work)						
	Mason Tender & Mud Mixer (sewer work)						
	Pilot Car						
	Pipelayer Helper						
	Plasterer, Bricklayer & Cement Finisher Tender						
	Powderman Helper						
	Power Saw Operator						
	Railroad Switch Layout Laborer						
	Sandblaster						
	Scaffold Building & Erecting						
	Sewer Caulker						
	Sewer Plant Maintenance Man						
	Thermal Plastic Applicator						
	Timber Faller, Chainsaw Operator, Filer						
	Timberman						

					<b>L&amp;M</b>	<b>LEG</b>	
<b>S1203</b>	<b>Group III, including:</b>	<b>32.61</b>	<b>8.70</b>	<b>17.31</b>	<b>1.30</b>	<b>0.20</b>	<b>60.32</b>
	Bit Grinder						
	Camera/Tool/Video Operator						
	Guardrail Machine Operator						
	High Rigger & Tree Topper						
	High Scaler						
	Multiplate						
	Plastic Welding						
	Slurry Seal Squeegee Man						
	Traffic Control Supervisor						
	Welding Certified (in connection with laborer's work)						

					<b>L&amp;M</b>	<b>LEG</b>	
<b>S1204</b>	<b>Group IIIA</b>	<b>35.89</b>	<b>8.70</b>	<b>17.31</b>	<b>1.30</b>	<b>0.20</b>	<b>63.60</b>
	Asphalt Raker, Asphalt Belly Dump Lay Down						
	Drill Doctor (in the field)						

Wage benefits key: BHR=basic hourly rate; H&W=health and welfare; IAF=industry advancement fund; LEG=legal fund; L&M=labor/management fund; PEN=pension fund; SAF=safety; SUI=supplemental unemployment insurance; S&L=SUI & LEG combined; TRN=training; THR=total hourly rate; VAC=vacation

**Laborers (The area that is south of N63 latitude and west of W138 longitude)**

\*See per diem note on last page

<b>S1204</b>	<b>Group IIIA</b>	<b>35.89</b>	<b>8.70</b>	<b>17.31</b>	<b>1.30</b>	<b>L&amp;M</b>	<b>LEG</b>	<b>63.60</b>
--------------	-------------------	--------------	-------------	--------------	-------------	----------------	------------	--------------

- Driller (including, but not limited to, wagon drills, air-track drills, hydraulic drills)
- Pioneer Drilling & Drilling Off Tugger (all type drills)
- Pipelayers
- Powderman (Employee Possessor)
- Storm Water Pollution Protection Plan Specialist (SWPPP Specialist)
- Traffic Control Supervisor, DOT Qualified

<b>S1205</b>	<b>Group IV</b>	<b>20.28</b>	<b>8.70</b>	<b>17.31</b>	<b>1.30</b>	<b>L&amp;M</b>	<b>LEG</b>	<b>47.99</b>
--------------	-----------------	--------------	-------------	--------------	-------------	----------------	------------	--------------

- Final Building Cleanup
- Permanent Yard Worker

<b>S1206</b>	<b>Group IIIB</b>	<b>39.68</b>	<b>5.99</b>	<b>17.31</b>	<b>1.30</b>	<b>L&amp;M</b>	<b>LEG</b>	<b>64.68</b>
--------------	-------------------	--------------	-------------	--------------	-------------	----------------	------------	--------------

- Federal Powderman (Responsible Person in Charge)
- Grade Checking (setting or transferring of grade marks, line and grade, GPS, drones)
- Stake Hopper

**Millwrights**

\*See per diem note on last page

<b>A1251</b>	<b>Millwright (journeyman)</b>	<b>37.64</b>	<b>10.08</b>	<b>12.28</b>	<b>1.10</b>	<b>L&amp;M</b>	<b>0.05</b>	<b>61.55</b>
--------------	--------------------------------	--------------	--------------	--------------	-------------	----------------	-------------	--------------

<b>A1252</b>	<b>Millwright Welder</b>	<b>38.64</b>	<b>10.08</b>	<b>12.28</b>	<b>1.10</b>	<b>L&amp;M</b>	<b>0.05</b>	<b>62.55</b>
--------------	--------------------------	--------------	--------------	--------------	-------------	----------------	-------------	--------------

**Painters, Region I (North of N63 latitude)**

\*See per diem note on last page

<b>N1301</b>	<b>Group I, including:</b>	<b>32.29</b>	<b>8.21</b>	<b>12.70</b>	<b>1.08</b>	<b>L&amp;M</b>	<b>0.07</b>	<b>54.35</b>
--------------	----------------------------	--------------	-------------	--------------	-------------	----------------	-------------	--------------

- Brush
- General Painter
- Hand Taping
- Hazardous Material Handler
- Lead-Based Paint Abatement
- Roll

<b>N1302</b>	<b>Group II, including:</b>	<b>32.81</b>	<b>8.21</b>	<b>12.70</b>	<b>1.08</b>	<b>L&amp;M</b>	<b>0.07</b>	<b>54.87</b>
--------------	-----------------------------	--------------	-------------	--------------	-------------	----------------	-------------	--------------

- Bridge Painter

Wage benefits key: BHR=basic hourly rate; H&W=health and welfare; IAF=industry advancement fund; LEG=legal fund; L&M=labor/management fund; PEN=pension fund; SAF=safety; SUI=supplemental unemployment insurance; S&L=SUI & LEG combined; TRN=training; THR=total hourly rate; VAC=vacation

**Painters, Region I (North of N63 latitude)**

\*See per diem note on last page

						<b>L&amp;M</b>	
<b>N1302</b>	Group II, including:	32.81	8.21	12.70	1.08	0.07	54.87
	Epoxy Applicator						
	General Drywall Finisher						
	Hand/Spray Texturing						
	Industrial Coatings Specialist						
	Machine/Automatic Taping						
	Pot Tender						
	Sandblasting						
	Specialty Painter						
	Spray						
	Structural Steel Painter						
	Wallpaper/Vinyl Hanger						

<b>N1304</b>	Group IV, including:	39.78	8.21	15.23	1.05	0.05	64.32
	Glazier						
	Storefront/Automatic Door Mechanic						

<b>N1305</b>	Group V, including:	29.13	8.21	5.02	0.83	0.07	43.26
	Carpet Installer						
	Floor Coverer						
	Heat Weld/Cove Base						
	Linoleum/Soft Tile Installer						

**Painters, Region II (South of N63 latitude)**

\*See per diem note on last page

						<b>L&amp;M</b>	
<b>S1301</b>	Group I, including :	30.13	8.21	12.85	1.08	0.07	52.34
	Brush						
	General Painter						
	Hand Taping						
	Hazardous Material Handler						
	Lead-Based Paint Abatement						
	Roll						
	Spray						

<b>S1302</b>	Group II, including :	31.38	8.21	12.85	1.08	0.07	53.59
	General Drywall Finisher						
	Hand/Spray Texturing						
	Machine/Automatic Taping						
	Wallpaper/Vinyl Hanger						

Wage benefits key: BHR=basic hourly rate; H&W=health and welfare; IAF=industry advancement fund; LEG=legal fund; L&M=labor/management fund; PEN=pension fund; SAF=safety; SUI=supplemental unemployment insurance; S&L=SUI & LEG combined; TRN=training; THR=total hourly rate; VAC=vacation



**Painters, Region II (South of N63 latitude)**

\*See per diem note on last page

<b>S1303</b>	Group III, including :	31.48	8.21	12.85	1.08	<b>L&amp;M</b> 0.07	53.69
	Bridge Painter						
	Epoxy Applicator						
	Industrial Coatings Specialist						
	Pot Tender						
	Sandblasting						
	Specialty Painter						
	Structural Steel Painter						

<b>S1304</b>	Group IV, including:	39.99	8.21	14.27	1.08	<b>L&amp;M</b> 0.07	63.62
	Glazier						
	Storefront/Automatic Door Mechanic						

<b>S1305</b>	Group V, including:	29.13	8.21	5.02	0.83	<b>L&amp;M</b> 0.07	43.26
	Carpet Installer						
	Floor Coverer						
	Heat Weld/Cove Base						
	Linoleum/Soft Tile Installer						

**Piledrivers**

\*See per diem note on last page

<b>A1401</b>	Piledriver	38.34	10.08	15.23	1.10	<b>L&amp;M</b> 0.10	<b>IAF</b> 0.10	64.95
	Assistant Dive Tender							
	Carpenter/Piledriver							
	Rigger							
	Sheet Stabber							
	Skiff Operator							

<b>A1402</b>	Piledriver-Welder/Toxic Worker	39.34	10.08	15.23	1.10	<b>L&amp;M</b> 0.10	<b>IAF</b> 0.10	65.95
--------------	--------------------------------	-------	-------	-------	------	------------------------	--------------------	-------

<b>A1403</b>	Remotely Operated Vehicle Pilot/Technician	42.65	10.08	15.23	1.10	<b>L&amp;M</b> 0.10	<b>IAF</b> 0.10	69.26
	Single Atmosphere Suit, Bell or Submersible Pilot							

<b>A1404</b>	Diver (working) **See note on last page	82.45	10.08	15.23	1.10	<b>L&amp;M</b> 0.10	<b>IAF</b> 0.10	109.06
--------------	---	-------	-------	-------	------	------------------------	--------------------	--------

<b>A1405</b>	Diver (standby) **See note on last page	42.65	10.08	15.23	1.10	<b>L&amp;M</b> 0.10	<b>IAF</b> 0.10	69.26
--------------	---	-------	-------	-------	------	------------------------	--------------------	-------

Wage benefits key: BHR=basic hourly rate; H&W=health and welfare; IAF=industry advancement fund; LEG=legal fund; L&M=labor/management fund; PEN=pension fund; SAF=safety; SUI=supplemental unemployment insurance; S&L=SUI & LEG combined; TRN=training; THR=total hourly rate; VAC=vacation

**Piledrivers**

\*See per diem note on last page

<b>A1406</b>	Dive Tender **See note on last page	41.65	10.08	15.23	1.10	L&M	IAF	68.26
--------------	-------------------------------------	-------	-------	-------	------	-----	-----	-------

<b>A1407</b>	Welder (American Welding Society, Certified Welding Inspector)	43.90	10.08	15.23	1.10	L&M	IAF	70.51
--------------	--	-------	-------	-------	------	-----	-----	-------

**Plumbers, Region I (North of N63 latitude)**

\*See per diem note on last page

<b>N1501</b>	Journeyman Pipefitter	41.46	9.75	17.00	1.40	L&M	S&L	70.26
--------------	-----------------------	-------	------	-------	------	-----	-----	-------

Plumber

Welder

**Plumbers, Region II (South of N63 latitude)**

\*See per diem note on last page

<b>S1501</b>	Journeyman Pipefitter	39.00	10.33	15.02	1.35	L&M		65.90
--------------	-----------------------	-------	-------	-------	------	-----	--	-------

Plumber

Welder

**Plumbers, Region IIA (1st Judicial District)**

\*See per diem note on last page

<b>X1501</b>	Journeyman Pipefitter	38.32	13.37	11.75	2.50	L&M		66.18
--------------	-----------------------	-------	-------	-------	------	-----	--	-------

Plumber

Welder

**Power Equipment Operators**

\*See per diem note on last page

<b>A1601</b>	Group I, including:	40.53	10.00	12.50	1.00	L&M		64.18
--------------	---------------------	-------	-------	-------	------	-----	--	-------

Asphalt Roller: Breakdown, Intermediate, and Finish

Back Filler

Barrier Machine (Zipper)

Beltcrete with Power Pack & similar conveyors

Bending Machine

Boat Coxswain

Bulldozer

Cableways, Highlines & Cablecars

Cleaning Machine

Coating Machine

Wage benefits key: BHR=basic hourly rate; H&W=health and welfare; IAF=industry advancement fund; LEG=legal fund; L&M=labor/management fund; PEN=pension fund; SAF=safety; SUI=supplemental unemployment insurance; S&L=SUI & LEG combined; TRN=training; THR=total hourly rate; VAC=vacation

**Power Equipment Operators**

\*See per diem note on last page

	<b>L&amp;M</b>					
<b>A1601</b> Group I, including:	40.53	10.00	12.50	1.00	0.10	0.05 64.18
Concrete Hydro Blaster						
Cranes (45 tons & under or 150 feet of boom & under (including jib & attachments))						
(a) Hydralifts or Transporters, (all track or truck type)						
(b) Derricks						
(c) Overhead						
Crushers						
Deck Winches, Double Drum						
Ditching or Trenching Machine (16 inch or over)						
Drag Scraper, Yarder, and similar types						
Drilling Machines, Core, Cable, Rotary and Exploration						
Finishing Machine Operator, Concrete Paving, Laser Screed, Sidewalk, Curb & Gutter Machine						
Helicopters						
Hover Craft, Flex Craft, Loadmaster, Air Cushion, All-Terrain Vehicle, Rollagon, Bargecable, Nodwell, & Snow Cat						
Hydro Ax, Feller Buncher & similar						
Hydro Excavation (Vac-Truck and Similar)						
Licensed Line & Grade						
Loaders (2 1/2 yards through 5 yards, including all attachments):						
(a) Forklifts (with telescopic boom & swing attachment)						
(b) Front End & Overhead, (2-1/2 yards through 5 yards)						
(c) Loaders, (with forks or pipe clamp)						
(d) Loaders, (elevating belt type, Euclid & similar types)						
Material Transfer Vehicle (Elevating Grader, Pickup Machine, and similar types)						
Mechanic, Welder, Bodyman, Electrical, Camp & Maintenance Engineer						
Micro Tunneling Machine						
Mixers: Mobile type with hoist combination						
Motor Patrol Grader						
Mucking Machine: Mole, Tunnel Drill, Horizontal/Directional Drill Operator and/or Shield						
Off-Road Hauler (including Articulating and Haul Trucks)						
Operator on Dredges						
Piledriver Engineer, L.B. Foster, Puller or similar paving breaker						
Plant Operator (Asphalt & Concrete)						
Power Plant, Turbine Operator 200 k.w & over (power plants or combination of power units over 300 k.w.)						
Remote Controlled Equipment						
Scraper (through 40 yards)						
Service Oiler/Service Engineer						

Wage benefits key: BHR=basic hourly rate; H&W=health and welfare; IAF=industry advancement fund; LEG=legal fund; L&M=labor/management fund; PEN=pension fund; SAF=safety; SUI=supplemental unemployment insurance; S&L=SUI & LEG combined; TRN=training; THR=total hourly rate; VAC=vacation

**Power Equipment Operators**

\*See per diem note on last page

<b>A1601</b> Group I, including:	40.53	10.00	12.50	1.00	<b>L&amp;M</b>		0.10	0.05	64.18
----------------------------------	-------	-------	-------	------	----------------	--	------	------	-------

- Shot Blast Machine
- Shovels, Backhoes, Excavators with all attachments, and Gradealls (3 yards & under)
- Sideboom (under 45 tons)
- Spreaders Topside (Asphalt Paver, Slurry machine, and similar types)
- Sub Grader (Gurries, Reclaimer & similar types)
- Tack Tractor
- Truck Mounted Concrete Pump, Conveyor/Tele-belt, & Creter
- Wate Kote Machine

<b>A1602</b> Group IA, including:	42.29	10.00	12.50	1.00	<b>L&amp;M</b>		0.10	0.05	65.94
-----------------------------------	-------	-------	-------	------	----------------	--	------	------	-------

- Camera/Tool/Video Operator (Slipline)
- Certified Welder, Electrical Mechanic, Camp Maintenance Engineer, Mechanic (over 10,000 hours)
- Cranes (over 45 tons or 150 feet including jib & attachments)
  - (a) Clamshells & Draglines (over 3 yards)
  - (b) Tower Cranes
- Licensed Water/Waste Water Treatment Operator
- Loaders (over 5 yards)
- Motor Patrol Grader, Dozer, Grade Tractor, Roto-Mill/Profiler (finish: when finishing to final grade and/or to hubs, or for asphalt)
- Power Plants (1000 k.w. & over)
- Quad
- Scrapers (over 40 yards)
- Screed
- Shovels, Backhoes, Excavators with all attachments (over 3 yards)
- Sidebooms (over 45 tons)
- Slip Form Paver, C.M.I. & similar types

<b>A1603</b> Group II, including:	39.76	10.00	12.50	1.00	<b>L&amp;M</b>		0.10	0.05	63.41
-----------------------------------	-------	-------	-------	------	----------------	--	------	------	-------

- Boiler - Fireman
- Cement Hogs & Concrete Pump Operator
- Conveyors (except those listed in Group I)
- Grade Checker
- Hoists on Steel Erection, Towermobiles & Air Tuggers
- Horizontal/Directional Drill Locator
- Licensed Grade Technician
- Locomotives, Rod & Geared Engines
- Mixers
- Screening, Washing Plant

Wage benefits key: BHR=basic hourly rate; H&W=health and welfare; IAF=industry advancement fund; LEG=legal fund; L&M=labor/management fund; PEN=pension fund; SAF=safety; SUI=supplemental unemployment insurance; S&L=SUI & LEG combined; TRN=training; THR=total hourly rate; VAC=vacation

<b>Power Equipment Operators</b>								
*See per diem note on last page								

<b>A1603</b>	Group II, including:	39.76	10.00	12.50	1.00	<b>L&amp;M</b>		63.41
--------------	----------------------	-------	-------	-------	------	----------------	--	-------

- Sideboom (cradling rock drill, regardless of size)
- Skidder
- Trenching Machines (under 16 inches)
- Water/Waste Water Treatment Operator

<b>A1604</b>	Group III, including:	39.04	10.00	12.50	1.00	<b>L&amp;M</b>		62.69
--------------	-----------------------	-------	-------	-------	------	----------------	--	-------

- "A" Frame Trucks, Deck Winches
- Bombardier (tack or tow rig)
- Boring Machine
- Brooms, Power (sweeper, elevator, vacuum, or similar)
- Bump Cutter
- Compressor
- Farm Tractor
- Forklift, Industrial Type
- Gin Truck or Winch Truck (with poles when used for hoisting)
- Hoists, Air Tuggers, Elevators
- Loaders:
  - (a) Elevating-Athey, Barber Greene & similar types
  - (b) Forklifts or Lumber Carrier (on construction job sites)
  - (c) Forklifts, (with tower)
  - (d) Overhead & Front End, (under 2-1/2 yards)
- Locomotives: Dinkey (air, steam, gas & electric) Speeders
- Mechanics, Light Duty
- Oil, Blower Distribution
- Posthole Digger, Mechanical
- Pot Fireman (power agitated)
- Power Plant, Turbine Operator, (under 200 k.w.)
- Pumps, Water
- Roller (other than Asphalt)
- Saws, Concrete
- Skid Hustler
- Skid Steer (with all attachments)
- Stake Hopper
- Straightening Machine
- Tow Tractor

<b>A1605</b>	Group IV, including:	32.83	10.00	12.50	1.00	<b>L&amp;M</b>		56.48
--------------	----------------------	-------	-------	-------	------	----------------	--	-------

- Crane Assistant Engineer/Rig Oiler
- Drill Helper

Wage benefits key: BHR=basic hourly rate; H&W=health and welfare; IAF=industry advancement fund; LEG=legal fund; L&M=labor/management fund; PEN=pension fund; SAF=safety; SUI=supplemental unemployment insurance; S&L=SUI & LEG combined; TRN=training; THR=total hourly rate; VAC=vacation
--

**Power Equipment Operators**

\*See per diem note on last page

							<b>L&amp;M</b>	
<b>A1605</b>	Group IV, including:	32.83	10.00	12.50	1.00	0.10	0.05	56.48
	Parts & Equipment Coordinator							
	Spotter							
	Steam Cleaner							
	Swamper (on trenching machines or shovel type equipment)							

**Roofers**

\*See per diem note on last page

							<b>L&amp;M</b>	
<b>A1701</b>	Roofer & Waterproofer	44.62	11.75	3.41	0.81	0.10	0.06	60.75
<b>A1702</b>	Roofer Material Handler	31.23	11.75	3.41	0.81	0.10	0.06	47.36

**Sheet Metal Workers, Region I (North of N63 latitude)**

\*See per diem note on last page

							<b>L&amp;M</b>	
<b>N1801</b>	Sheet Metal Journeyman	48.04	11.20	13.61	1.65	0.12		74.62
	Air Balancing and duct cleaning of HVAC systems							
	Brazing, soldering or welding of metals							
	Demolition of sheet metal HVAC systems							
	Fabrication and installation of exterior wall sheathing, siding, metal roofing, flashing, decking and architectural sheet metal work							
	Fabrication and installation of heating, ventilation and air conditioning ducts and equipment							
	Fabrication and installation of louvers and hoods							
	Fabrication and installation of sheet metal lagging							
	Fabrication and installation of stainless steel commercial or industrial food service equipment							
	Manufacture, fabrication assembly, installation and alteration of all ferrous and nonferrous metal work							
	Metal lavatory partitions							
	Preparation of drawings taken from architectural and engineering plans required for fabrication and erection of sheet metal work							
	Sheet Metal shelving							
	Sheet Metal venting, chimneys and breaching							
	Skylight installation							

**Sheet Metal Workers, Region II (South of N63 latitude)**

\*See per diem note on last page

Wage benefits key: BHR=basic hourly rate; H&W=health and welfare; IAF=industry advancement fund; LEG=legal fund; L&M=labor/management fund; PEN=pension fund; SAF=safety; SUI=supplemental unemployment insurance; S&L=SUI & LEG combined; TRN=training; THR=total hourly rate; VAC=vacation

**Sheet Metal Workers, Region II (South of N63 latitude)**

\*See per diem note on last page

						<b>L&amp;M</b>	
<b>S1801</b>	Sheet Metal Journeyman	42.70	11.20	13.89	1.68	0.43	69.90
	Air Balancing and duct cleaning of HVAC systems						
	Brazing, soldering or welding of metals						
	Demolition of sheet metal HVAC systems						
	Fabrication and installation of exterior wall sheathing, siding, metal roofing, flashing, decking and architectural sheet metal work						
	Fabrication and installation of heating, ventilation and air conditioning ducts and equipment						
	Fabrication and installation of louvers and hoods						
	Fabrication and installation of sheet metal lagging						
	Fabrication and installation of stainless steel commercial or industrial food service equipment						
	Manufacture, fabrication assembly, installation and alteration of all ferrous and nonferrous metal work						
	Metal lavatory partitions						
	Preparation of drawings taken from architectural and engineering plans required for fabrication and erection of sheet metal work						
	Sheet Metal shelving						
	Sheet Metal venting, chimneys and breaching						
	Skylight installation						

**Sprinkler Fitters**

\*See per diem note on last page

						<b>L&amp;M</b>	
<b>A1901</b>	Sprinkler Fitter	47.25	10.02	15.95	0.52	0.25	73.99

**Surveyors**

\*See per diem note on last page

						<b>L&amp;M</b>	
<b>A2001</b>	Chief of Parties	43.16	10.83	12.14	1.15	0.10	67.38
<b>A2002</b>	Party Chief	41.57	10.83	12.14	1.15	0.10	65.79
<b>A2003</b>	Line & Grade Technician/Office Technician/GPS, Drones	40.97	10.83	12.14	1.15	0.10	65.19
<b>A2004</b>	Associate Party Chief (including Instrument Person & Head Chain Person)/Stake Hop/Grademan	38.85	10.83	12.14	1.15	0.10	63.07
<b>A2006</b>	Chain Person (for crews with more than 2 people)	34.51	10.83	12.14	1.15	0.10	58.73

Wage benefits key: BHR=basic hourly rate; H&W=health and welfare; IAF=industry advancement fund; LEG=legal fund; L&M=labor/management fund; PEN=pension fund; SAF=safety; SUI=supplemental unemployment insurance; S&L=SUI & LEG combined; TRN=training; THR=total hourly rate; VAC=vacation

**Truck Drivers**

\*See per diem note on last page

<b>A2101</b> Group I, including:	39.94	10.83	12.14	1.15	<b>L&amp;M</b> 0.10	64.16
----------------------------------	-------	-------	-------	------	------------------------	-------

- Air/Sea Traffic Controllers
- Ambulance/Fire Truck Driver (EMT certified)
- Boat Coxswain
- Captains & Pilots (air & water)
- Deltas, Commanders, Rollagons, & similar equipment (when pulling sleds, trailers or similar equipment)
- Dump Trucks (including rockbuggy, side dump, belly dump, & trucks with pups) over 40 yards up to & including 60 yards
- Helicopter Transporter
- Liquid Vac Truck/Super Vac Truck
- Lowboys (including attached trailers & jeeps up to & including 8 axles)
- Material Coordinator or Purchasing Agent
- Ready-mix (over 12 yards up to & including 15 yards) (over 15 yards to be negotiated)
- Semi with Double Box Mixer
- Tireman, Heavy Duty/Fueler
- Water Wagon (250 Bbls and above)

<b>A2102</b> Group 1A including:	41.21	10.83	12.14	1.15	<b>L&amp;M</b> 0.10	65.43
----------------------------------	-------	-------	-------	------	------------------------	-------

- Dump Trucks (including rockbuggy, side dump, belly dump & trucks with pups) over 60 yards up to & including 100 yards (over 100 yards to be negotiated)
- Jeeps (driver under load)
- Lowboys, including tractor attached trailers & jeeps, 9 axles, up to & including 12 axles (over 12 axles or 150 tons to be negotiated)

<b>A2103</b> Group II, including:	38.68	10.83	12.14	1.15	<b>L&amp;M</b> 0.10	62.90
-----------------------------------	-------	-------	-------	------	------------------------	-------

- All Deltas, Commanders, Rollagons, & similar equipment
- Batch Trucks (8 yards & up)
- Batch Trucks (up to & including 7 yards)
- Boom Truck/Knuckle Truck (over 5 tons)
- Cacasco Truck/Heat Stress Truck
- Construction and Material Safety Technician
- Dump Trucks (including rockbuggy, side dump, belly dump, & trucks with pups) over 20 yards up to & including 40 yards
- Gin Pole Truck, Winch Truck, Wrecker (truck mounted "A" frame manufactured rating over 5 tons)
- Mechanics
- Oil Distributor Driver
- Partsman
- Ready-mix (up to & including 12 yards)

Wage benefits key: BHR=basic hourly rate; H&W=health and welfare; IAF=industry advancement fund; LEG=legal fund; L&M=labor/management fund; PEN=pension fund; SAF=safety; SUI=supplemental unemployment insurance; S&L=SUI & LEG combined; TRN=training; THR=total hourly rate; VAC=vacation



**Truck Drivers**

\*See per diem note on last page

							<b>L&amp;M</b>	
<b>A2103</b>	Group II, including:	38.68	10.83	12.14	1.15	0.10		62.90
	Stringing Truck							
	Turn-O-Wagon or DW-10 (not self loading)							
<b>A2104</b>	Group III, including:	37.86	10.83	12.14	1.15	0.10	<b>L&amp;M</b>	62.08
	Boom Truck/Knuckle Truck (up to & including 5 tons)							
	Dump Trucks (including rockbuggy, side dump, belly dump, & trucks with pups) over 10 yards up to & including 20 yards							
	Expeditor (electrical & pipefitting materials)							
	Gin Pole Truck, Winch Truck, Wrecker (truck mounted "A" frame manufactured rating 5 tons & under)							
	Greaser - Shop							
	Semi or Truck & Trailer							
	Thermal Plastic Layout Technician							
	Traffic Control Technician							
	Trucks/Jeeps (push or pull)							
<b>A2105</b>	Group IV, including:	37.28	10.83	12.14	1.15	0.10	<b>L&amp;M</b>	61.50
	Air Cushion or similar type vehicle							
	All Terrain Vehicle							
	Buggymobile							
	Bull Lift & Fork Lift, Fork Lift with Power Boom & Swing Attachment (over 5 tons)							
	Bus Operator (over 30 passengers)							
	Cement Spreader, Dry							
	Combination Truck-Fuel & Grease							
	Compactor (when pulled by rubber tired equipment)							
	Dump Trucks (including rockbuggy, side dump, belly dump, & trucks with pups) up to & including 10 yards							
	Dumpster							
	Expeditor (general)							
	Fire Truck/Ambulance Driver							
	Flat Beds, Dual Rear Axle							
	Foam Distributor Truck Dual Axle							
	Front End Loader with Fork							
	Grease Truck							
	Hydro Seeder, Dual Axle							
	Hyster Operators (handling bulk aggregate)							
	Loadmaster (air & water operations)							
	Lumber Carrier							
	Ready-mix, (up to & including 7 yards)							

Wage benefits key: BHR=basic hourly rate; H&W=health and welfare; IAF=industry advancement fund; LEG=legal fund; L&M=labor/management fund; PEN=pension fund; SAF=safety; SUI=supplemental unemployment insurance; S&L=SUI & LEG combined; TRN=training; THR=total hourly rate; VAC=vacation

**Truck Drivers**

\*See per diem note on last page

						<b>L&amp;M</b>	
<b>A2105</b>	Group IV, including:	37.28	10.83	12.14	1.15	0.10	61.50
	Rigger (air/water/oilfield)						
	Tireman, Light Duty						
	Track Truck Equipment						
	Truck Vacuum Sweeper						
	Warehouseperson						
	Water Truck (Below 250 Bbls)						
	Water Truck (straight)						
	Water Wagon, Semi						

						<b>L&amp;M</b>	
<b>A2106</b>	Group V, including:	36.52	10.83	12.14	1.15	0.10	60.74
	Buffer Truck						
	Bull Lifts & Fork Lifts, Fork Lifts with Power Boom & Swing Attachments (up to & including 5 tons)						
	Bus Operator (up to 30 passengers)						
	Farm Type Rubber Tired Tractor (when material handling or pulling wagons on a construction project)						
	Flat Beds, Single Rear Axle						
	Foam Distributor Truck Single Axle						
	Fuel Handler (station/bulk attendant)						
	Gear/Supply Truck						
	Gravel Spreader Box Operator on Truck						
	Hydro Seeders, Single axle						
	Pickups (pilot cars & all light-duty vehicles)						
	Rigger/Swamper						
	Tack Truck						
	Team Drivers (horses, mules, & similar equipment)						

**Tunnel Workers, Laborers (The Alaska areas north of N63 latitude and east of W138 longitude)**

\*See per diem note on last page

						<b>L&amp;M</b>	<b>LEG</b>	
<b>N2201</b>	Group I, including:	33.78	8.70	17.31	1.30	0.20	0.20	61.49
	Brakeman							
	Mucker							
	Nipper							
	Storm Water Pollution Protection Plan Worker (SWPPP Worker - erosion and sediment control Laborer)							
	Topman & Bull Gang							
	Tunnel Track Laborer							

<b>N2202</b>	Group II, including:	34.88	8.70	17.31	1.30	0.20	0.20	62.59
--------------	----------------------	-------	------	-------	------	------	------	-------

Wage benefits key: BHR=basic hourly rate; H&W=health and welfare; IAF=industry advancement fund; LEG=legal fund; L&M=labor/management fund; PEN=pension fund; SAF=safety; SUI=supplemental unemployment insurance; S&L=SUI & LEG combined; TRN=training; THR=total hourly rate; VAC=vacation

**Tunnel Workers, Laborers (The Alaska areas north of N63 latitude and east of W138 longitude)**

\*See per diem note on last page

					L&M	LEG	
<b>N2202</b>	Group II, including:	34.88	8.70	17.31	1.30	0.20	62.59
	Burning & Cutting Torch						
	Certified Erosion Sediment Control Lead (CESCL Laborer)						
	Concrete Laborer						
	Floor Preparation, Core Drilling						
	Jackhammer/Chipping Gun or Pavement Breaker						
	Laser Instrument Operator						
	Nozzlemen, Pumpcrete or Shotcrete						
	Pipelayer Helper						

					L&M	LEG	
<b>N2203</b>	Group III, including:	35.87	8.70	17.31	1.30	0.20	63.58
	Miner						
	Retimberman						

					L&M	LEG	
<b>N2204</b>	Group IIIA, including:	39.48	8.70	17.31	1.30	0.20	67.19
	Asphalt Raker, Asphalt Belly Dump Lay Down						
	Drill Doctor (in the field)						
	Driller (including, but not limited to wagon drills, air-track drills, hydraulic drills)						
	Pioneer Drilling & Drilling Off Tugger (all type drills)						
	Pipelayer						
	Powderman (Employee Possessor)						
	Storm Water Pollution Protection Plan Specialist (SWPPP Specialist)						

					L&M	LEG	
<b>N2206</b>	Group IIIB, including:	43.65	5.99	17.31	1.30	0.20	68.65
	Federal Powderman (Responsible Person in Charge)						
	Grade Checking (setting or transferring of grade marks, line and grade, GPS, drones)						
	Stake Hopper						

**Tunnel Workers, Laborers (The area that is south of N63 latitude and west of W138 longitude)**

\*See per diem note on last page

					L&M	LEG	
<b>S2201</b>	Group I, including:	33.78	8.70	17.31	1.30	0.20	61.49
	Brakeman						
	Mucker						
	Nipper						
	Storm Water Pollution Protection Plan Worker (SWPPP Worker - erosion and sediment control Laborer)						
	Topman & Bull Gang						

Wage benefits key: BHR=basic hourly rate; H&W=health and welfare; IAF=industry advancement fund; LEG=legal fund; L&M=labor/management fund; PEN=pension fund; SAF=safety; SUI=supplemental unemployment insurance; S&L=SUI & LEG combined; TRN=training; THR=total hourly rate; VAC=vacation

**Tunnel Workers, Laborers (The area that is south of N63 latitude and west of W138 longitude)**

\*See per diem note on last page

<b>S2201</b>	Group I, including:	33.78	8.70	17.31	1.30	<b>L&amp;M</b>	<b>LEG</b>	61.49
--------------	---------------------	-------	------	-------	------	----------------	------------	-------

Tunnel Track Laborer

<b>S2202</b>	Group II, including:	34.88	8.70	17.31	1.30	<b>L&amp;M</b>	<b>LEG</b>	62.59
--------------	----------------------	-------	------	-------	------	----------------	------------	-------

- Burning & Cutting Torch
- Certified Erosion Sediment Control Lead (CESCL Laborer)
- Concrete Laborer
- Floor Preparation, Core Drilling
- Jackhammer/Chipping Gun or Pavement Breaker
- Laser Instrument Operator
- Nozzlemen, Pumcrete or Shotcrete
- Pipelayer Helper

<b>S2203</b>	Group III, including:	35.87	8.70	17.31	1.30	<b>L&amp;M</b>	<b>LEG</b>	63.58
--------------	-----------------------	-------	------	-------	------	----------------	------------	-------

- Miner
- Retimberman

<b>S2204</b>	Group IIIA, including:	39.48	8.70	17.31	1.30	<b>L&amp;M</b>	<b>LEG</b>	67.19
--------------	------------------------	-------	------	-------	------	----------------	------------	-------

- Asphalt Raker, Asphalt Belly Dump Lay Down
- Drill Doctor (in the field)
- Driller (including, but not limited to wagon drills, air-track drills, hydraulic drills)
- Pioneer Drilling & Drilling Off Tugger (all type drills)
- Pipelayer
- Powderman (Employee Possessor)
- Storm Water Pollution Protection Plan Specialist (SWPPP Specialist)

<b>S2206</b>	Group IIIB, including:	43.65	5.99	17.31	1.30	<b>L&amp;M</b>	<b>LEG</b>	68.65
--------------	------------------------	-------	------	-------	------	----------------	------------	-------

- Federal Powderman (Responsible Person in Charge)
- Grade Checking (setting or transferring of grade marks, line and grade, GPS, drones)
- Stake Hopper

**Tunnel Workers, Power Equipment Operators**

\*See per diem note on last page

<b>A2207</b>	Group I	44.58	10.00	12.50	1.00	<b>L&amp;M</b>	0.10	0.05	68.23
--------------	---------	-------	-------	-------	------	----------------	------	------	-------

<b>A2208</b>	Group IA	46.52	10.00	12.50	1.00	<b>L&amp;M</b>	0.10	0.05	70.17
--------------	----------	-------	-------	-------	------	----------------	------	------	-------

Wage benefits key: BHR=basic hourly rate; H&W=health and welfare; IAF=industry advancement fund; LEG=legal fund; L&M=labor/management fund; PEN=pension fund; SAF=safety; SUI=supplemental unemployment insurance; S&L=SUI & LEG combined; TRN=training; THR=total hourly rate; VAC=vacation

**Tunnel Workers, Power Equipment Operators**

\*See per diem note on last page

<b>A2209</b>	Group II	43.74	10.00	12.50	1.00		<b>L&amp;M</b> 0.10	0.05	67.39
<b>A2210</b>	Group III	42.94	10.00	12.50	1.00		<b>L&amp;M</b> 0.10	0.05	66.59
<b>A2211</b>	Group IV	36.11	10.00	12.50	1.00		<b>L&amp;M</b> 0.10	0.05	59.76

\* Per diem is an established practice for this classification. This means that per diem is an allowable alternative to board and lodging if all criteria are met. See 8 AAC 30.051-08 AAC 30.056, and the per diem information on page vii of this Pamphlet.

\*\* Work in combination of classifications: Employees working in any combination of classifications within the diving crew (working diver, standby diver, and tender) in a shift are paid in the classification with the highest rate for a minimum of 8 hours per shift.

Wage benefits key: BHR=basic hourly rate; H&W=health and welfare; IAF=industry advancement fund; LEG=legal fund; L&M=labor/management fund; PEN=pension fund; SAF=safety; SUI=supplemental unemployment insurance; S&L=SUI & LEG combined; TRN=training; THR=total hourly rate; VAC=vacation

## Local Bidder Preference

A local bidder preference shall be incorporated into the award of this contract based on the following criteria:

- A Bidder who maintains and operates a business within the boundaries of the City of Homer shall be considered the lower Bidder where its offer is:
  1. Not more than five percent (5%) higher than the lowest non-local bid up to five hundred thousand dollars (\$0 - \$500,000) or;
  2. Not more than five percent (5%) higher than the lowest non-local bid on the first five hundred thousand dollars (\$500,000) and two and ½ percent (2.5%) higher than the lowest non-local bid on an amount greater than five hundred thousand dollars (\$500,000) to one million dollars (\$1,000,000). There will be no additional local bidder preference percentage for bid amounts exceeding one million dollars (\$1,000,000).
  
- A Bidder shall be deemed a Local Bidder who:
  1. Holds a current Alaska Business License to provide the services requested by this contract; and
  2. Submits a bid under the name appearing on the firm's current Alaska Business License; and
  3. Has maintained a place of business within the boundaries of the City of Homer for a period of at least six (6) months immediately preceding the date of the Bid and intends to permanently maintain such place of business in the future; and
  4. Is not delinquent in the payment of any taxes, charges, or assessments owed to the City of Homer on account of that business.

The City Manager may require such documentation or verification by the person or firm claim.