

INVITATION TO BID
By the City of Homer, Alaska
For the Reconstruction of Woodard Creek Culvert at Fairview Ave.

Sealed Bids for reconstruction of the Woodard Creek Culvert at Fairview Avenue will be received by the Office of the City Clerk, City of Homer, 491 E. Pioneer Avenue, Homer, Alaska 99603 until **3:00 PM, Thursday, June 15, 2021**, at which time they will be publicly opened and read. Bids received after the time fixed for receipt of the bids shall not be considered. **All bidders must submit a City of Homer Plan Holders Registration form to be on the Plan Holders List to be considered responsive.** Plan holder registration forms and Plans and Specifications are available online at <http://www.cityofhomer-ak.gov/rfps>

A Pre-Bid Meeting will be held on Thursday, May 27, 2021 at 10:00 a.m. in the Cowles Council Chambers, City Hall, 491 E. Pioneer Avenue, Homer, Alaska 99603 with a site visit immediately following.

Paper copies of the bid documents may be purchased for \$100 (\$150 Overnight delivery). City of Homer Standard Construction Specifications 2011 Edition (containing general contract provisions) may also be downloaded from the City's website. All fees are non-refundable.

For Bid Documents and Specifications contact: City Clerk's Office, 491 E. Pioneer Avenue, Homer, Alaska 99603 (907) 235-3130

The project consists of furnishing all labor, materials, equipment, tools, supervision, and other facilities necessary to perform the project in accordance with the plans and specifications. The work includes, but is not limited to the following:

Removal of the current culverts for Woodard Creek at Fairview Ave and construction of a new, 110foot long, 73"x55" arch culvert. The arch culvert will be replaced in open excavation. Backfill will consist of classified fill and stockpiled excavated embankment material. The 10" DIP water and 8" DIP sewer mains must be temporarily removed and reinstalled while the abandoned 8" DIP water main must be removed and capped. One quarter ton of rock must be placed on the southern facing slope for slope protection.

Please direct all questions in writing regarding this project to: Janette Keiser, PE, Public Works Director, City of Homer Public Works Dept. 3575 Heath Street, Homer, Alaska 99603 or jkeiser@ci.homer.ak.us (907) 435-3141

The City of Homer reserves the right to accept or reject any or all bids, to waive irregularities or informalities in the bids, and to award the contract to the respondent that best meets the selection criteria and the City's needs.

Dated this 7th day of May, 2021.

City of Homer



Robert Dumouchel, City Manager

Publish: Homer News May 13, 20, 2021
Peninsula Clarion May 13, 20, 2021
AD#: 21-042

Fiscal Note: 160-0779-5227

INSTRUCTIONS TO BIDDERS
City of Homer, Alaska
Woodard Creek Culvert Reconstruction at Fairview Ave.

The City of Homer, Alaska is requesting bids from qualified firms and individuals for the project described herein.

The following subjects are discussed herein to assist you in the preparation of your bid.

- I. Introduction
- II. Scope of Services
- III. General Bidding Requirements
- IV. The Bid Package
- V. Tentative Project Schedule
- VI. Instructions to Bidders
- VII. Labor Rates
- VIII. Equal Opportunity Employment Certification

I. Introduction

The City of Homer requests bids for reconstructing the Woodard Creek culvert at Fairview Ave. The purpose of this project is to reconstruct the Woodard Creek culvert so that it, and the road above, are no longer at risk of collapse and to strengthen the slope on the southern side of the road to prevent erosion.

All work activity associated with the project shall be completed by November 30, 2021.

II. Scope of Services

The proposed work is located within the limits of the City of Homer and is illustrated on the plans entitled Construction Drawings for City of Homer Woodard Creek Culver Replacement at Fairview Avenue.

The project consists of furnishing all labor, materials, equipment, tools, supervision and other facilities necessary for the performance of the work described herein and shown on the project drawings. The work includes, but is not limited to:

- Construction of a 110 foot long, 73"x55" galvanized steel pipe arch culvert; including reinforced concrete headwall reconstruction. The existing twin 42" diameter steel pipe culverts will be removed and disposed of by the contractor. The culvert will be replaced in open excavation. Backfill will consist of classified fill within the horizontal plane of the pipe arch and stockpiled excavated embankment material as directed by the engineer. The Fairview Avenue structural section will be reconstructed with geotextile fabric, classified fills, leveling course, and asphalt concrete.
- The placement of ¼ ton rock slope protection on the southerly facing embankment slope with filter fabric by means of dumping and individually placing rock to avoid culvert damage and as directed by the engineer.
- Removal and capping of the abandoned City of Homer 8" DIP water main. The main will be removed during the culvert excavation stage.

- Temporary removal and reinstallation of the City of Homer 10” DIP water main and 8” DIP sewer main. The mains will be removed from service during construction. The contractor shall remove the mains within the limit of culvert excavation and sealed against intrusion of contaminants. The mains will be reinstalled during the culvert backfill stage.

III. General Bidding Requirements

The work must be performed by a Contractor skilled and regularly engages in the type of work called for under the Contract. Bidders must have a current contractor’s license issued by the State of Alaska. The license must apply to the work described in the Invitation. The City’s local bidder preference requirements apply to this contract. State prevailing wage rates will apply.

An electronic copy of Plans and Specifications is available on the City’s website <http://www.cityofhomer-ak.gov/rfps> or you may purchase hard copies at the Office of the City Clerk upon payment of \$100 per set (\$150 for overnight delivery). City of Homer Standard Construction Specifications 2011 Edition (containing general contract provisions) may also be downloaded from the city’s website. All fees are non-refundable. The City of Homer reserves the right to accept or reject any or all bids, to waive irregularities or informalities in the bids, and to award the contract to the lowest responsive, responsible bidder.

Performance and Payment bonds in the amount of 100 percent (100%) of the bid amount are required.

Bids must be submitted on the Bid Form and be received by 3:00 PM on Tuesday, June 15, 2021, at the Office of the City Clerk, City of Homer 491 E. Pioneer Avenue, Homer, Alaska, 99603. **A bid bond is required.** Cashier checks in an amount equal to five percent (5%) of the bid are acceptable. Surety bonds are acceptable.

A Pre-Bid Conference will be held at 2:00 p.m. on Thursday, May 27, 2021 at the Cowles Council Chamber, City Hall 491 E Pioneer Ave Homer, Alaska 99603. Masks will be required.

A Site Visit will be conducted immediately following the meeting.

IV. The Bid Package

The City of Homer requires a two-part Bid Package, Part A and Part B. Each portion of the Bid Package must be submitted in separate envelopes, which shall be combined into one single Bid Package, marked with the name of the project and the time/date of the bid opening.

At the bid opening, Part B is opened first and must be complete or Part A will not be opened and the bid will be rejected.

Part A of the bid contains:

- a. Bid Form
- b. Bid Bond

Part A must be submitted, as part of the Bid Package, in a separate envelope marked Part A.

Part B of the bid contains:

- a. Addenda Acknowledgment Form

- b. If signature on the Bid is by an agent, other than an Officer of a Corporation, or of a member of a Co-partnership, a Power of Attorney must be submitted in Part B.
- c. EEO-1 Certification
- d. Equal Employment Opportunity Statement of Acknowledgement form
- e. Equal Employment Opportunity Clause (Provided with the bid package)

Part B must be submitted, as part of the Bid Package, in a separate envelope marked Part B.

V. Tentative Project Schedule

- Pre-bid Conference May 27th
- Bids Due June 15th
- Notice of Intent to Award June 16th
- Award by City Council June 28th
- Notice to Proceed June 29th
- Pre-Construction Meeting July 6th
- Start Construction July 12th
- Contract Completion November 30th

VI. Instructions to Bidders

The City of Homer intends to award the contract to the lowest responsive, responsible bidder but reserves the right to accept or reject any or all proposals, to waive irregularities or informalities in the bids or bid process, and to award the contract to the bidder that best meets the criteria stated below.

A. Qualification of Bidders

It is the intention of the City of Homer to award this contract to the Bidder who furnishes satisfactory evidence they have the requisite experience, ability and sufficient capital, facilities and plant to prosecute the work successfully (and properly) and to complete it within the time allowed in the Contract at the least cost to the City of Homer for dollars spent for value received. Bidders will be required to fill out a questionnaire attesting to their qualifications.

B. Taxes

Attention is directed to the requirements of the General Conditions regarding the payment of taxes. All taxes that are lawfully assessed against Owner or Contractor in connection with the work shall be paid by the Contractor. The Bid prices shall include all such taxes.

The City of Homer is exempt from local sales taxes. The Contractor shall not include sales tax markup in his bid. However, in order to recoup sales tax the Contractor might pay at local vendors, the Contractor must secure a Tax Exempt card from the Kenai Peninsula Borough Tax Department.

C. Familiarization with the Work

Before submitting its Bid, each prospective Bidder shall familiarize itself with the work, labor conditions and all laws, regulations and other factors affecting performance of the work. Bidders shall carefully correlate

their observations with the requirements of the Contract Documents and otherwise satisfy themselves of the expense and difficulties attending performance of the work. The submission of a Bid shall constitute an acknowledgement that the Bidder has thoroughly examined and is familiar with the Contract Documents and the provisions thereof. The failure or neglect of a Bidder to receive or examine any of the Bid Documents shall in no way relieve the bidder from any obligations with the respect to their Bid or to the Contract. Misinterpretation or a reputed lack of knowledge concerning the Bid will not serve as a basis for a claim for additional compensation.

Each Bidder shall visit the site of the Work and completely inform themselves relative to construction hazards and procedures, the availability of lands, the character and quantity of surface and subsurface materials and utilities to be encountered, the arrangement and conditions of existing structures and facilities, the procedure necessary for maintenance of uninterrupted operations of existing facilities, the character of construction equipment and facilities needed for performance of the work, and facilities for transportation, handling and storage of materials and equipment. All such factors shall be properly investigated and considered in the preparation of the Bid.

D. Interpretation of Bid Documents

All questions about the meaning or intent of the Contract Documents shall be submitted to the Office of the Director of Public Works in writing. Replies will be issued by Addenda and delivered to all parties recorded by the City Clerk's Office as having received the Bidding documents. **The City of Homer will not be held responsible for questions received less than (5) calendar days prior to the date of opening of Bids.** Only questions answered by formal written Addenda will be binding. Oral and other interpretations or clarifications will be without legal effect.

The Bidder shall acknowledge receipt of all Addenda on the Addendum Form, which shall be properly signed by the Bidder and placed in Part B.

It shall be the Bidder's responsibility to inquire as to addenda issued. **Failure to include the Addenda Form in Part B of the Bid Package shall result in the Bid being rejected as non-responsive.**

E. Bid Bond

Each Bid shall be accompanied by a Bid Bond duly completed on the suggested form provided by a guaranty company authorized to conduct business in the State of Alaska, along with a General Power of Attorney form, if applicable, for payment to the City in the sum of five percent (5%) of the total amount of the Bid. **Failure to include the Bid Bond in Part A of the Bid Package shall result in the Bid being rejected as non-responsive.**

The amount payable to the City under the Bid Bond or the certified or cashier's check, as the case may be, shall be forfeited to the City in case of a failure or neglect of the Bidder to furnish, execute, and deliver to the City required Performance and Payment Bonds, Evidences of Insurance, necessary forms or material required by the Bid or failure to enter into, execute and deliver to the City the Contract on the form provided therefor, **within ten (10) working days after receipt of "Notice of Intent to Award Contract" by the City that the Contract is ready for execution.** The "Award of Contract" will be made upon the execution of the Contract by the Bidder and the City.

F. Return of Bid Guarantee

Within thirty (30) days after the Bids are opened, the City will return the Bid Guarantees accompanying the Bids, which are not to be considered in making the award. The bid Guarantees of the three (3) lowest responsive Bids will be held until the Contract has been fully executed after which time the Guarantees will be returned to the respective Bidders whose Bids the Guarantees accompanied.

G. Contract Time

The Contract Time is an essential part of the Contract and it will be necessary for each Bidder to satisfy the City of his ability to complete the work within the time set forth in the Bid form. Provisions for delays, liquidated damages, and extensions of time are set forth in the Standard Construction Specifications. Time is of the essence in this contract.

H. Preparation of Bids

Bids must be submitted on the forms provided by the City and completed in all respects as required by the Bid Documents. Bids shall include all information requested herein, and be manually signed by the Bidder or the Bidder's duly authorized representative, with the Bidder's address and phone number. If the signature is by an agent, other than an Officer of a Corporation, or a member of a Co-partnership, a Power of Attorney must be submitted in Part B of the Bid; otherwise, the Bid will be rejected as non-responsive. **All Bids must be regular in every respect, and no alterations shall be made to the Bid form.**

If erasures or changes appear on the forms, each must be initialed by the person signing the Bid. No oral, telegraphic, electronic or telephone proposals will be considered.

Bid Packages, containing separate envelopes for Part A and Part B of the bid, will be received at the City Clerk's Office located at City Hall 491 East Pioneer Avenue, Homer, Alaska 99603, until the time indicated on the Invitation to Bid. Each Bid shall be submitted enclosed in a sealed, opaque envelope. **The envelope shall have the Bid title and date of Bid opening on the lower left-hand corner of the Bid Package.** The City is not responsible for the premature opening of, or failure to open, a bid not properly addressed and identified.

No consideration will be given by the City to a claim or error unless such claim is made to the City in writing within two (2) hours after the time of Bid opening. Written verification and supporting evidence of the error shall be delivered to the City Clerk within 24 hours of the Bid Opening (not including Saturday, Sunday or legal holidays) to allow consideration of the claim for error. Supporting evidence shall be original documents, including cost breakdown sheets, supplier quotes and other documents used to compute the Bid.

It is the bidder's responsibility to see that Bid Packages are deposited at the time and place set forth for the public opening of Bids. Bids not received by the time will not be considered responsive and shall not be considered.

VII. Labor Rates

State Labor Rates.

This project is covered by the State of Alaska Title 36 Laborer's and Mechanic's Minimum Rate of Pay (AS 36.05.010 & 36.05.050) Pamphlet No. 600, Issue 42, Effective April 1, 2021. It is the responsibility of

the bidder to determine the current rates of pay required and to submit the proper certified payrolls to the State Department of Labor

VIII. Equal Opportunity Employment

Bidders must submit forms related to Equal Employment Opportunity with their bids, including:

- Equal Employment Opportunity Statement of Acknowledgement form
- Equal Employment Opportunity Clause (Provided with the bid package)
- EEO-1 Certification

SPECIAL PROVISIONS

Woodard Creek Culvert Replacement at Fairview Avenue

The construction contract for this project will be administered in accordance with the General Provisions of the City's Standard Construction Specifications (2011).

MODIFICATIONS TO GENERAL PROVISIONS

SP-1: Article 2.3 – Preparation of Bids

Add part “g. bid items” which reads as follows:

“Bid Item 1 – Mobilization/Demobilization:

Measurement will be made on the basis of percent complete, as defined in the City of Homer Standard Construction Specifications (HSCS), Section 101. Payment will be based on the Lump Sum (LS) price stated in the Bid Proposal. This payment will be full compensation for all materials, labor, equipment, and incidentals necessary to perform the work in conformance with the Drawings and all other Contract Documents.

Bid Item 2 – Construction Survey:

Measurement will be made on the basis of percent complete, as defined in HSCS Section 102. Payment will be based on the Lump Sum (LS) price stated in the Bid Proposal. This payment will be full compensation for all materials, labor, equipment, and incidentals necessary to perform the work in conformance with the Drawings and all other Contract Documents.

Bid Item 3 – Traffic Maintenance:

Measurement will be made on the basis of percent complete, as defined in HSCS Section 103. Payment will be based on the Lump Sum (LS) price stated in the Bid Proposal. This payment will be full compensation for all materials, labor, equipment, and incidentals necessary to perform the work in conformance with the Drawings and all other Contract Documents.

Bid Item 4 - Clearing and Grubbing:

Measurement will be made on the basis of percent complete, as defined in HSCS Section 202. Payment will be based on the Lump Sum (LS) price stated in the Bid Proposal. This payment will be full compensation for all materials, labor, equipment, and incidentals necessary to perform the work in conformance with the Drawings and all other Contract Documents.

Bid Item 5 – Removal/Disposal of Existing AC Pavement:

Measurement for payment of removal/disposal of AC pavement, as directed by the Engineer, shall be on the basis of square foot (SQFT). Measurement and payment shall be full payment for hauling material off-site, to a Contractor provided, City approved uplands disposal site

Bid Item 6 – Culvert Excavation (Unusable):

Measurement for payment for unusable culvert excavation will be based on the cubic yard (CY) as defined in HSCS Section 204 for Excavation for Traffic Ways. Refer to Special Provision Section 222 for specifications and requirements for dewatering excavations. The payment for Unusable Culvert Excavation shall include completing all excavation within the prism, including the excavation and off-site disposal of material not reused in backfill, excavation and disposal of geotextile fabrics, and existing steel pipe culverts, and any other associated work necessary to complete culvert excavation as shown on the Drawings and as directed by the Engineer.

Bid Item 7 - Culvert Excavation (Usable):

Measurement for payment for usable culvert excavation will be based on the cubic yard (CY) as defined in HSCS Section 204 for Excavation for Traffic Ways. Refer to Special Provision Section 222 for specifications and requirements for dewatering excavations. The payment for Usable Culvert Excavation shall include completing all excavation within the prism, including the excavation and stockpiling of material to be reused in backfill, dewatering, and any other associated work necessary to complete culvert excavation as shown on the Drawings and as directed by the Engineer.

Bid Item 8 - Compaction Control By Contractor:

Measurement for payment of trench backfill compaction control, as directed by the Engineer, shall be on the basis of lump sum (LS). Measurement and payment shall be full payment for providing field compaction testing for quality control as defined in HSCS Section 208 - Compaction Control By Contractor.

Bid Item 9 – Type II Fill and Backfill (Including Mechanical Compaction):

Measurement for payment for Type II Fill and Backfill shall be per cubic yard (CY), in place, compacted and graded. Refer to HSCS Section 205 for specifications and requirements for Classified II Fill and Backfill and Section 208 for Mechanical Compaction. Measurement and payment per cubic yard shall be full payment for providing and installing Type II Fill and Backfill installed, compacted, graded, and in place.

Bid Item 10 – Type III Fill and Backfill (Including Mechanical Compaction):

Measurement for payment for Type III Fill and Backfill shall be per cubic yard (CY), in place, compacted and graded. Refer to HSCS Section 205 for specifications and requirements for Classified III Fill and Backfill and Section 208 for Mechanical Compaction. Measurement and payment per cubic yard shall be full payment for providing and installing Type III Fill and Backfill installed, compacted, graded, and in place.

Bid Item 11 – Leveling Course:

Measurement for payment for Leveling Course shall be per cubic yard (CY), in place, compacted and graded. Refer to HSCS Section 206 for specifications and requirements for Leveling Course. Measurement and payment per cubic yard shall be full payment for providing and installing Leveling Course installed, compacted, graded, and in place.

Bid Item 12 – Implement SWPPP:

Measurement will be made on the basis of percent complete. Scope of work is described in these Special Provisions, Article 6.10 – Air and Water Pollution Laws. Payment will be based on the Lump Sum (LS) price stated in the Bid Proposal. This payment will be full compensation for all

materials, labor, equipment, and incidentals necessary to perform the work in conformance with the Drawings and all other Contract Documents.

Bid Item 13 – Install City-Provided Aluminized Corrugated Steel Arch Culvert (73”x 55”): Measurement for payment will be on the basis of linear feet (LF) of pipe installed, and shall include all labor, equipment, materials, supervision and other facilities necessary for the work. Refer to Special Provisions, Section 712 for specifications and requirements for installing Aluminized Corrugated Steel Pipe Arch. The payment shall include all labor and any other associated work to install the pipe arch culvert per the manufacturer’s recommendations as shown on the Drawings and as directed by the Engineer.

Bid Item 14 – Install City-Provided Aluminized Corrugated Steel Arch Culvert End Section (73”x 55”): Measurement for payment will be on the basis of each (EA) culvert end section installed, and shall include all labor, equipment, materials, supervision and other facilities necessary for the work. Refer to HSCS, Section 802 for measurement and basis of payment. The payment shall include all labor and any other associated work to install the City-provided Aluminized Pipe Arch Culvert End Section per the manufacturer’s recommendations as shown on the Drawings and as directed by the Engineer.

Bid Item 15 – Remove Reinforced Concrete Headwall (portion of): Measurement for payment shall be lump sum (LS) of headwall removed and shall include all labor, equipment, materials and supervision and other facilities necessary for the work. Refer to Special Provisions, Section 220 for specifications and requirements for removing reinforced concrete headwalls. Payment shall include all labor and materials for the temporary shoring of wingwalls and removing reinforcing bars in conflict with the new pipe arch culvert and as directed by the Engineer.

Bid Item 16 – Reconstruct Reinforced Concrete Headwall: Measurement for payment shall be lump sum (LS) of headwall reconstructed and shall include all labor, equipment, materials and supervision and other facilities necessary for the work. Refer to Special Provision 306 for specifications and requirements for constructing reinforced concrete headwall. The payment shall include all labor and materials for the installation of new reinforcing bars, reinforcing bar splices, and forming, pouring, and curing of concrete.

Bid Item 17 – Woven Geotextile Fabric: Measurement for payment for Woven Geotextile Fabric shall be based on the square yard (SQYD). Refer to HSCS Section 702 for specifications and requirements for woven geotextile fabric. Payment shall include full payment for all work described in HSCS, Section 702 as shown on the Drawings and as directed by the Engineer.

Bid Item 18 – Asphalt Concrete Pavement: Measurement for payment for Asphalt Concrete Pavement shall be per ton (TON). Refer to HSCS Section 401 for specifications and requirements for asphalt concrete pavement. Payment shall include full payment for all work described in HSCS Section 401, as shown on the Drawings and as directed by the Engineer.

Bid Item 19 – Rock Slope Protection:

Measurement for payment for Rock Slope Protection shall be per ton (TON). Refer to Special Provision Section 222 Rock Slope Protection for specifications and requirements for rock slope protection. The payment shall include all labor and materials for furnishing and installing rock slope protection, including furnishing and placing filter fabric and placing individual rocks around culverts and as directed by the Engineer.

Bid Item 20 –Seeding (Type 1):

Measurement will be made as defined in HSCS Section 708. Payment per 1000 SQFT will be full compensation for all materials, labor, equipment, and incidentals necessary to perform the work in conformance with the Drawings and as directed by the Engineer.

Bid Item 21 – Topsoil (8 Inches):

Measurement will be made as defined in HSCS Section 710. Payment per 1000 SQFT will be full compensation for all materials, labor, equipment, and incidentals necessary to perform the work in conformance with the Drawings and as directed by the Engineer.

Bid Item 22 – Protect Existing Underground Fiber Optic Cable Across Culvert Trench Opening:

Measurement will be made on the basis of percent complete. Payment will be based on the Lump Sum (LS) price stated in the Bid Proposal. This payment will be full compensation for all materials, labor, equipment, and incidentals necessary to perform the work in conformance with the Drawings and the Special Provisions, Section 995.

Bid Item 23 – Protect Existing Natural Gas Main Across Culvert Trench Opening:

Measurement will be made on the basis of percent complete. Payment will be based on the Lump Sum (LS) price stated in the Bid Proposal. This payment will be full compensation for all materials, labor, equipment, and incidentals necessary to perform the work in conformance with the Drawings and the Special Provisions, Section 996.

Bid Item 24 – Remove Existing Sewer Main Within Culvert Trench Opening/Reinstall During Backfill of Culvert:

Measurement will be made on the basis of percent complete. Payment will be based on the Lump Sum (LS) price stated in the Bid Proposal. This payment will be full compensation for all materials, labor, equipment, and incidentals necessary to perform the work in conformance with the Drawings and the Special Provisions, Section 997.

Bid Item 25 – Remove Existing Water Main Within Culvert Trench Opening/Reinstall During Backfill of Culvert:

Measurement will be made on the basis of percent complete. Payment will be based on the Lump Sum (LS) price stated in the Bid Proposal. This payment will be full compensation for all materials, labor, equipment, and incidentals necessary to perform the work in conformance with the Drawings and the Special Provisions, Section 998.

Bid Item 26 – Furnish and Install 4” Thick Insulation:

Measurement will be made as defined in HSCS Section 704. Payment per board foot (BFT) will be full compensation for all materials, labor, equipment, and incidentals necessary to perform the work in conformance with the Drawings and as directed by the Engineer.”

SP-2: Section 10.04 - Add New Article 4.6 – Scope of Work

The Work included under this Contract consists of furnishing all labor, materials, equipment, supervision, and other facilities necessary to successfully complete the Work set forth in the drawings, specifications, and the terms of the Contract.

The Work that is presented in the Bid Proposal for this Contract consists of the following major elements of work:

- Construction of a City-provided 110 foot long, 73"x55" aluminized corrugated steel pipe arch culvert and an end section; including the partial removal and reconstruction of a reinforced concrete headwall. The existing twin 42" diameter corrugated steel pipe culverts will be removed and disposed of by the contractor. The culvert will be replaced in an open excavation. Backfill will consist of classified fill within the horizontal plane of the pipe arch and stockpiled excavated embankment material as directed by the engineer.
- The reconstruction of Fairview Avenue structural section with geotextile fabric, classified fills, leveling course, and asphalt concrete.
- The placement of ¼ ton rock slope protection on the southerly facing embankment slope with filter fabric by means of dumping and individually placing rock to avoid culvert damage and as directed by the engineer.
- Removal and capping of the abandoned City of Homer 8" DIP water main. The main will be removed during the culvert excavation stage.
- Temporary removal and reinstallation of the City of Homer 10" DIP water main and 8" DIP sewer main. The mains will be removed from service during construction. The contractor shall remove the mains within the limit of culvert excavation and sealed against intrusion of contaminants. The mains will be reinstalled during the culvert backfill stage.
- Associated work includes, but may not be limited to:
 - Creek diversion pumping or installation of temporary culverts
 - Dewatering (for culvert replacement, pump to downstream creek segment)
 - Temporary erosion control
 - Project SWPPP
 - Project Health and Safety Plan
 - Traffic Control and maintenance
 - Placement of topsoil and reseeding

SP-3: Article 5.19 – Easement and Rights-of-way

Add the following language:

“The Contractor will be provided access to several laydown areas for material storage, laydown, job shack, and other uses. The location of these areas is shown on drawing included at the end of this Special Provision section.”

SP-4: Article 5.9 – Construction Survey by Contractor

Add the following language:

“The Contractor shall submit all survey control data with each pay application; field Books with sketches and electronic survey coordinates. Record drawings shall be submitted to the Owner within 20 days of the completion of the work.

The Contractor’s surveyor shall make a conscious attempt to locate all property corners and monuments along the route of work and shall reference those corners that may be disturbed due to this work. At the completion of the project, the Contractor shall restore all disturbed property corners and monuments at no additional cost to the Owner. This work shall be performed by a land surveyor registered in the State of Alaska or under his immediate direction.

Contractor shall provide all necessary surveying and layout to perform the work in the Contract Documents and determine trench excavation/backfill volumes for use in determining payment for excavation and fill/backfill bid items.

Contractor shall perform an as-built survey and prepare Record Drawings of the completed construction project. The cost of preparing the as-built survey shall be incidental to the Construction Survey bid item.

The Record Drawings shall be prepared and stamped by a registered land surveyor (RLS) currently licensed by the State of Alaska, and shall include, but not be limited to, the following:

Lines, grades, and details of all improvements, and the interface with the existing water system. Coordinates for all underground features such as piping and valves. The Record Drawings shall consist of a full-size blue line marked up in red reflecting any and all changes made from the original contract plan. Red-lined Drawings shall be submitted to the Engineer for review. The Record Drawings will not be considered complete until the Engineer issues final approval in writing.”

SP-5: Article 5.25 - Unusual Work Hours

Add the following sentence:

“The noise level from work completed before 8:00 AM and after 8:00 PM cannot exceed 75 db at a distance of 50 feet.”

SP-6: Article 6.7 - Traffic

Add the following language:

“Fairview Avenue shall be closed to through traffic within the limits of areas for contractor’s use during the duration of construction. If the contractor interrupts access to properties adjacent to the work, 48 hours prior notice shall be given to the property owners and the City of Homer. Contactor shall notify property owners, with door hangers, at least 24 hours prior to driveway access denial. The contractor is responsible for printing and posting such notices with time and date.”

SP-7: Article 6.10 – Air and Water Pollution Laws

Add the following language:

“The Contractor is responsible for implementing the City prepared Storm Water Erosion Control Plan (SWPPP) and protecting the waters of the United States as required by the Clean Water Act. The Contractor shall be responsible, *under the lump sum bid*, for completing work as described below:

- 1) Obtain NOI.
- 2) Maintain the SWPPP of Record
- 3) Provide required site signage/postings.
- 4) Implement the SWPPP, including weekly inspections and site documentation. Keep copy of all records on-site.
- 5) Construct a silt fence or other approved sediment control improvement immediately adjacent to the work as determined by the approved SWPPP plan.
- 6) Implement nominal/basic erosion control measures identified in the SWPPP and basic BMP’s.
- 7) Any other normal requirements of the SWPPP, including but not limited to securing Owner signatures on weekly SWPPP inspection reports, submitting copies of the reports and other basic regulatory obligations.

The City will partner with the Contractor to determine means and methods employed to protect surface and ground water and manage risk. The City and the Contractor are jointly responsible for permitting and permit compliance within the work area. The SWPPP shall encourage the installation of final erosion control measures as soon as possible. Subcontractors must certify that they have read and will abide by the conditions of the project SWPPP.

The City and the Contractor will monitor the site and determine if any special additional work is required beyond the basic work identified in the SWPPP. Any work items above and beyond that listed above will be paid for on a *time and material basis* if additional control measures are deemed necessary by the City.

The City has filed a Notice of Intent (NOI) with the Alaska Department of Conservation (See Appendix for application and Permit Issuance). The Contractor shall also file a NOI using the project Name and Number contained within the Owner’s permit. At end of project, Contractor shall file a Notice of Termination (NOT).

The SWPPP shall be implemented by a Certified Professional in Erosion and Sedimentation Control (CPESC); an individual with a current AK-CESCL certification and at least three relevant years of experience; or a Professional Engineer registered in Alaska with current certification as AK-CESCL

The SWPPP plan will document that the project is in conformance with applicable Clean Water Act provisions and that work conforms to all project environmental permits conditions.

Contractor is responsible for revising SWPP during construction if necessary. The Contractor will act as the Operator on the Construction site as it relates to completing SWPPP work activities. The Contractor shall track success and failures of BMP implementation in inspection reports.”

SP-8: Article 6.13 - Utilities

Add the following language to part b:

“The Contractor shall directly coordinate with and receive approval from Enstar Gas to protect, provide temporary supports and relocate the 8-inch gas main within the limits of excavation. The contractor shall anticipate the gas line to remain in service during the duration of the work.

The contractor shall directly coordinate with and receive approval from GCI to protect, provide temporary supports and relocate fiber optic conduits within the limit of excavation. The contractor shall anticipate the fiber optic conduits to remain in service during the project.

The City will be responsible for all costs associated with the temporary support and relocation of the 8-inch gas main and fiber optic conduits.”

SP-9: Section 10.06 - Add New Article 6.23 – Americans with Disabilities Act

The Contractor shall comply with Title I – Employment of the American with Disabilities Act of 1990 (P.L. 101-336) and in accordance with that Act, shall not discriminate against a qualified individual with a disability because of the disability of such individual in regard to job application procedures, the hiring, advancement, or discharge of employees, employee compensation, job training and other terms, conditions, and privileges of employment.

The Contractor shall not discriminate on the basis of race, color, national origin or sex in the performance of this contract. The Contractor shall carry out applicable requirements of 40 CFR Part 33.

MODIFICATIONS TO STANDARD CONSTRUCTION SPECIFICATIONS

SP-10: Construction Specification 201.5

Add the following language:

“The Contractor shall be responsible for project quality control testing for compaction of backfill, including scheduling and performing all tests, hiring qualified testing personnel, retaining approved certified testing laboratories, and payment of all costs associated with the project.”

SP-11: 202.2 - Construction

Delete the following language:

“All burning shall be done in accordance with applicable laws and ordinances. All burning shall be constantly supervised and controlled by competent watchmen at such times and in such a manner that the surrounding forest cover and other adjacent property will not be jeopardized.”

And replace with:

“No onsite burning shall take place for this project.”

SP-12: NEW SECTION 220 – REMOVE REINFORCED CONCRETE HEADWALL (PORTION OF)

220.1 General

The work under this section consists of performance of all operations pertaining to the removal of a portion of the reinforced concrete headwall to the limits shown on the drawings.

220.2 Construction

Reinforced concrete removal includes removal of indicated steel embedded in the concrete. Protect existing reinforcement to be incorporated into the new work from damage. Before removing a portion of a monolithic concrete element, make a 1-inch-deep saw cut to a true line along the limits of removal on faces of the element that will be visible in the completed work. Where new concrete is to join existing concrete, remove enough concrete to allow splicing of new reinforcement. Thoroughly remove all material adhering to the existing reinforcement before embedding it in new concrete.

Temporary shoring shall be installed to stabilize the wingwalls before removal of the headwall. The shoring shall either strut between opposing wingwalls or be independent for each wall. The shoring shall be capable of resisting a force of 1500 pounds per horizontal foot at a height of 5 feet above the top of concrete footing.

Instead of disposing of removed concrete, the contractor may:

1. Incorporate it in adjacent embankments if it is:
 - a. Broken into parts at most 6 inches in greatest dimension
 - b. Buried at least 3 feet below the finished grade and slope lines
 - c. Buried at least 10 feet from the limits of the culvert

220.3 Method of Measurement

Remove Reinforced Concrete Headwall (Portion) shall be measured by lump sum (LS). Payment for Remove Reinforced Concrete Headwall includes all labor, materials, and incidentals for installing temporary wingwall shoring, saw-cutting concrete, removing concrete, removing select reinforcing bars, and protecting and cleaning reinforcing bars to remain.

220.4 Basis of Payment

Payment shall be made under the following unit:

<u>ITEM</u>	<u>DESCRIPTION</u>	<u>UNIT</u>
15	Remove Reinforced Concrete Headwall (Portion Of)	LS

SP-13: NEW SECTION 221 – ROCK SLOPE PROTECTION

221.1 General

The work under this section consists of performance of all operations pertaining to the placement of ¼ ton rock slope protection in accordance with the limits shown on the drawings and as directed by the Engineer.

221.2 Construction

Select rock such that the shapes provide a stable structure for the required section. If the slope is steeper than 2:1, do not use rounded boulders and cobbles. Angular shaped rock may be used on any planned slope. Flat or needle-shaped rock must not be used unless the individual rock thickness is greater than 0.33 times the length.

Filter fabric must be RSP fabric as indicated on the plans or an approved equal.

Rocks may be placed by dumping and may be spread in layers by bulldozers or other suitable equipment. Place rocks such that:

1. There is a minimum of voids
2. Larger rocks are in the toe course and on the outside surface of the slope protection

Where damage to culverts may occur or as directed by the Engineer, do not place rocks by dumping. Place rocks on the slope such that their longitudinal axis is normal to the face of the embankment. Place foundation course rocks such that they are in contact with the ground surface. For rocks above the foundation course, place them such that each rock has a 3-point bearing on underlying rocks; do not bear them on smaller rocks which may be used for chinking voids.

221.3 Method of Measurement

Rock Slope Protection shall be measured by the ton (TON), measured in tons of material delivered and placed in accordance with the dimensions shown on the drawings and these specifications. Payment for rock slope protection includes all labor, materials, and incidentals for furnishing and installing filter fabric.

221.4 Basis of Payment

Payment shall be made under the following unit:

<u>ITEM</u>	<u>DESCRIPTION</u>	<u>UNIT</u>
-------------	--------------------	-------------

SP-14: NEW SECTION 222 – DEWATERING EXCAVATIONS**222.1 General**

This specification covers the dewatering of the excavation during construction. The contractor shall install pumps, temporary diversion culverts, or a combination of both means capable of handling a 2-year recurrence storm with 24-hour duration but no less than 1900 gallons per minute, in compliance with provisions in Article 6.10.

222.2 Basis of Payment

Payment for dewatering excavations is included in the price paid per cubic yard of Culvert Excavation, and no additional payments will be made.

SP-15: NEW SECTION 306 – RECONSTRUCT REINFORCED CONCRETE HEADWALL**306.1 General**

This work shall consist of the reconstruction of the culvert headwall in conformance with the plans.

306.2 Construction

The concrete shall conform to HSCS Section 301 for Class AA-3 concrete. Mechanical reinforcing bar splices shall be those shown on the plans or an equal splice approved by the Engineer.

Forms for concrete shall be plumb and of adequate strength and stiffness to avoid deformation during concrete pours. Form design shall conform to the most recent ACI 347 manuals and shall be given to the City for review.

306.3 Method of Measurement

Reconstruct Reinforced Concrete Headwall shall be measured by lump sum (LS). Payment for Reconstruct Reinforced Concrete Headwall includes all labor, materials including reinforcing bars, reinforcing bar splices, and incidentals for furnishing and installing the reinforced concrete headwall.

306.4 Basis of Payment

Payment shall be made under the following unit:

<u>ITEM</u>	<u>DESCRIPTION</u>	<u>UNIT</u>
-------------	--------------------	-------------

SP-16: NEW SECTION 712 – INSTALL CITY-PROVIDED ALUMINIZED CORRUGATED STEEL PIPE ARCH (73” x 55”)**712.1 General**

This specification covers the installation of the aluminized corrugated steel structural plate pipe arch structure detailed in the plans. The City of Homer will furnish the pipe arch, end section, splices, and associated joining hardware to the contractor for installation. All aforementioned materials will be delivered to The City’s Public Works Department premises at 3575 Heath Street on or before July 12, 2021 at which time they will be made available for the Contractor to inspect. The Contractor shall inspect the arch culvert pieces and if no defects are found, accept them. Once accepted, the Contractor shall accept responsibility for the arch culvert pieces as if the Contractor had procured them. In the event the Contractor identifies defects in the arch culvert pieces, the Contractor shall promptly notify the City.

The contractor’s attention is directed to the following Contech Inc. publications:

1. 800-Specification-CSP-Aluminized Steel Type 2 (Specification)
2. 240-CSP-Standard Backfill-Pipe Arch-AASHTO (Standard Detail)
3. CMP Safety Handling and Uploading (Manual)
4. Aluminized Steels – Safety Data Sheet (MSDS)

712.2 Construction

The contractor shall take care not to damage the material or aluminizing after taking control of the material from the City of Homer. Where aluminizing is damaged during installation, the contractor shall propose a repair to apply protective coating to the satisfaction of the Engineer and complete the approved repair.

The structure shall be assembled in accordance with the shop drawings provided by the manufacturer and per the manufacturer’s recommendations.

The structure shall be installed in accordance with the plans and these specifications, the manufacturer’s recommendations, and the AASHTO Standard Specifications for Highway Bridges, Section 26 (Division II).

The structure shall be backfilled using clean well graded granular material that meets the requirements of AASHTO M 145 using City of Homer Type II classified fill. Backfill must be placed symmetrically on each side of the structure in 8-inch maximum lifts. Each lift shall be compacted to a minimum of 90 percent density per AASHTO T 99.

During backfilling operations, only small-tracked construction equipment (such as a D-4 dozer or smaller) shall be near the structure as fill progresses above the crown and to the minimum

height of cover. After adequate cover and compaction is achieved, live loads may increase at the direction of the Engineer.

712.3 Method of Measurement

Aluminized Steel Pipe Arch shall be measured by the linear foot (LF), based in the centerline of the pipe as shown on the drawings. Installation of bands to hold culvert section together is incidental to the overall installation.

712.4 Basis of Payment

Payment for Aluminized Steel Pipe Arch includes all labor and incidentals for installing the pipe arch. Payment shall be made under the following unit:

<u>ITEM</u>	<u>DESCRIPTION</u>	<u>UNIT</u>
13	Install City-Provided Aluminized Steel Pipe Arch Culvert	LF
14	Install City-Provided Aluminized Steel Pipe Arch Culvert End Section	EA

SP-17: NEW SECTION 995 – PROTECT EXISTING UNDERGROUND FIBER OPTIC CABLE ACROSS CULVERT TRENCH OPENING

995.1 General

This specification covers the work associated with protecting the existing underground fiber optic cable on the south side of Fairview Avenue that crosses the culvert trench opening (approximately Culvert Sta. 10+70) and assuring that the cable remains operational during construction of the project. The City of Homer will facilitate communication/coordination between the Contractor and the affected utility agency (ACS).

995.2 Construction

The Contractor shall provide a written Utility Protection Plan detailing how this work will be completed at least 7 days prior to initiation of work. The plan must be approved by the Engineer and the associated utility before work can begin.

As the culvert trench excavation is being completed, the Contractor shall expose the cable (utilizing hand excavations as necessary), provide a temporary bridge or other support structure capable of supporting the cable while trench excavation continues below the cable, the culvert is installed, and culvert trench backfill is completed back up to the cable.

SP-18: NEW SECTION 996 – PROTECT EXISTING NATURAL GAS MAIN ACROSS CULVERT TRENCH OPENING

996.1 General

This specification covers the work associated with protecting the existing 8” natural gas main on the south side of Fairview Avenue that crosses the culvert trench opening (approximately Culvert

Sta. 10+60) and assuring that the main remains operational during construction of the project. The City of Homer will facilitate communication/coordination between the Contractor and the affected utility agency (Enstar).

996.2 Construction

The Contractor shall provide a written Utility Protection Plan detailing how this work will be completed at least 7 days prior to initiation of work. The Plan must be approved by the Engineer and the associated utility before work can begin.

As the culvert trench excavation is being completed, the Contractor shall expose the gas main (utilizing hand excavations as necessary), provide a temporary bridge or other support structure capable of supporting the main while trench excavation continues below the cable, the culvert is installed, and culvert trench backfill is completed back up to the gas main.

SP-19: NEW SECTION 997 – REMOVE EXISTING SEWER MAIN WITHIN CULVERT TRENCH OPENING/REINSTALL DURING BACKFILL OF CULVERT

997.1 General

This specification covers the work associated with removing a portion of the existing 8” ductile iron sewer main under Fairview Avenue that is exposed by the culvert trench excavation as it crosses the culvert trench opening (approximately Culvert Sta. 10+45), capping both ends (to assure debris does not enter the pipe during construction), and the reinstallation/replacement of the removed portion as the culvert trench is backfilled.

997.2 Construction

The Contractor shall provide a written plan detailing how this work will be completed at least 7 days prior to initiation of work. The plan must be approved by the Engineer and the associated utility before work can begin.

As the culvert trench excavation is being completed, the Contractor shall expose the sewer main (utilizing hand excavations as necessary), remove the sewer main within the culvert trench opening, and reinstall or replace with new pipe after the culvert is installed and culvert trench backfill has been completed back up to the elevation of the sewer main.

The Contractor shall be responsible for pressure testing the sewer main between the upstream and downstream manholes as specified in the City of Homer Standard Construction Specifications.

See the drawing at the end of these Special Provisions showing sewer and water main removal and reconnection work requirements.

SP-20: NEW SECTION 998 – REMOVE EXISTING WATER MAIN WITHIN CULVERT TRENCH OPENING/REINSTALL DURING BACKFILL OF CULVERT

998.1 General

This specification covers the work associated with removing a portion of the existing 10" ductile iron water main under Fairview Avenue that is exposed by the culvert trench excavation (approximately Culvert Sta. 10+40), capping both ends (to assure debris does not enter the pipe during construction), and the replacement of the removed portion with new 10" HDPE pipe. The City will isolate the portion of the main crossing the culvert trench by shutting off an existing valve to the west and the Contractor shall install a new valve east of the culvert trench (see drawing included at the end of these Special Provisions) to isolate the main being removed from the active distribution system.

998.2 Construction

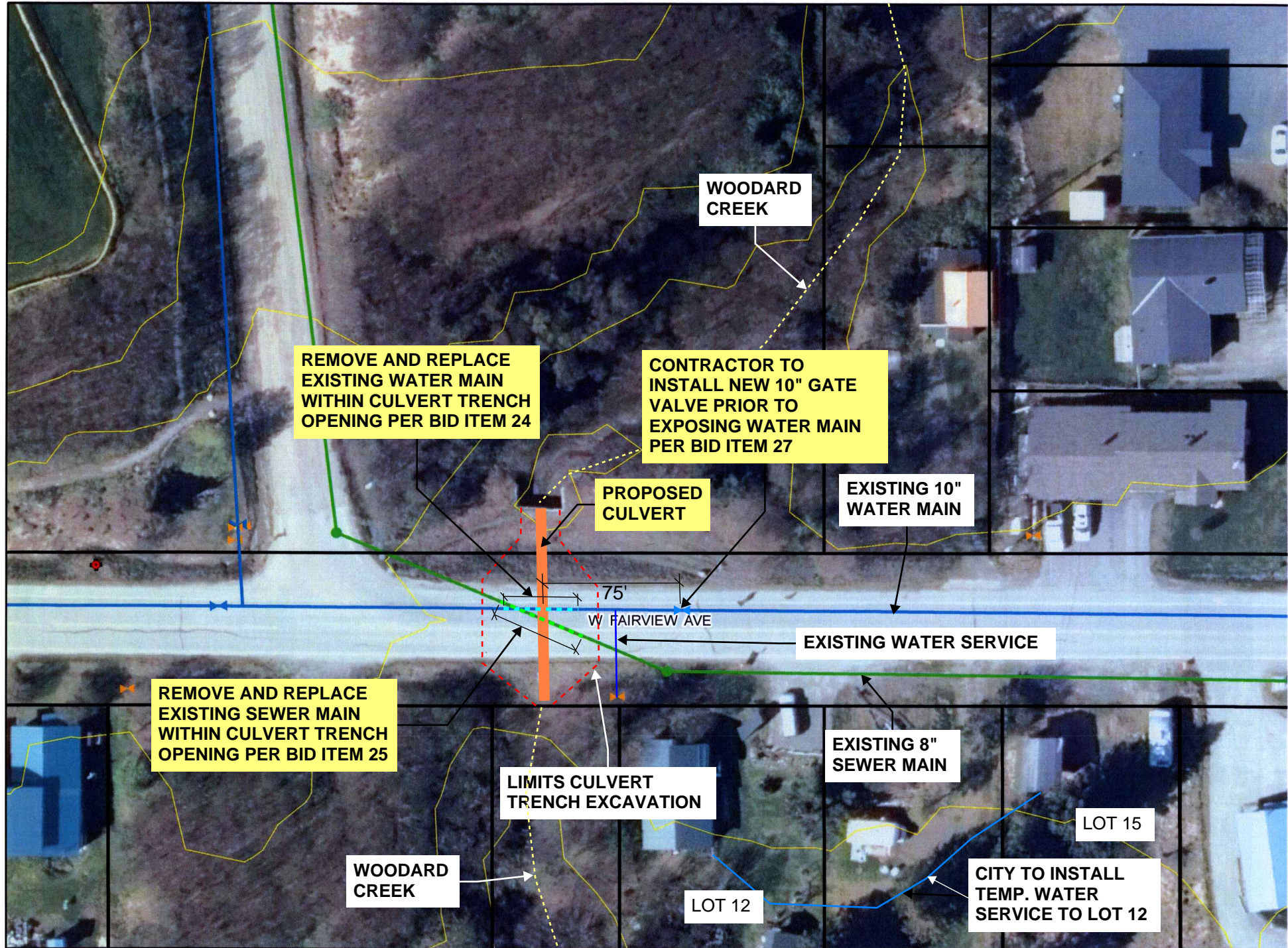
The Contractor shall provide a written Utility Protection Plan detailing how this work will be completed at least 7 days prior to initiation of work. The Plan must be approved by the Engineer and the associated utility before work can begin.

The Contractor shall coordinate with the City to verify readiness of distribution system and that all customers are served before beginning any work on the water main. As the culvert trench excavation is being completed, the Contractor shall expose the water main (utilizing hand excavation as necessary), remove the water main within the culvert trench opening, and cap the lines. When the culvert has been installed and trench backfill has been completed back up to the elevation of the water main, the Contractor shall install a new 10" HDPE main across the trench opening and disinfect and pressure test the section of the main between the two isolation valves.

The Contractor shall be responsible for providing a written disinfection/pressure testing plan for review and approval by the Engineer prior to initiating work. Water main materials incorporated into the project, construction methods, and disinfection/pressure testing of the water main shall be in accordance with the City of Homer Standard Construction Specifications. Contractor shall submit to the Engineer cut sheets of all materials proposed to be incorporated into the project for review and approval prior to work initiation.

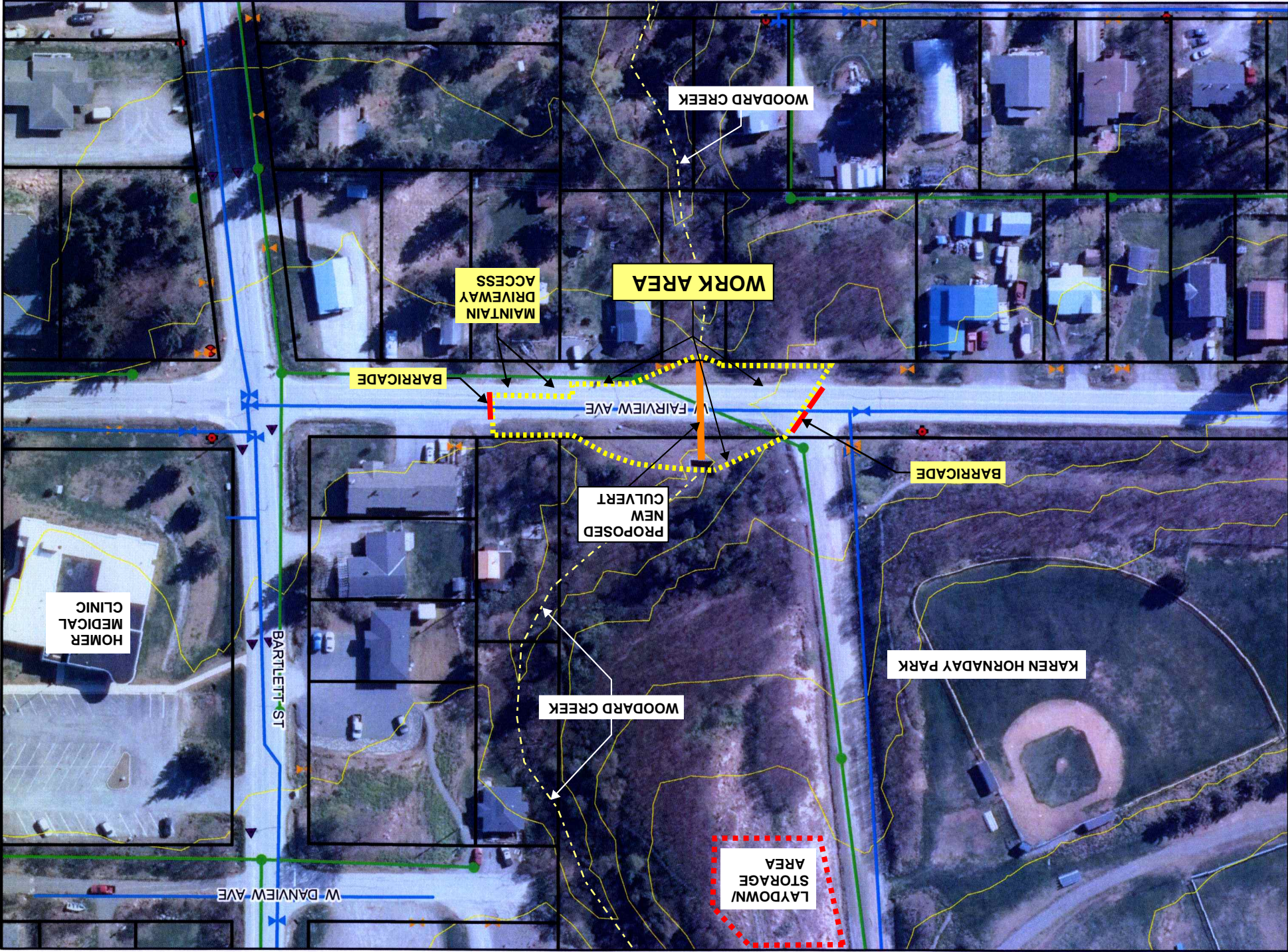
See the drawing at the end of these Special Provisions showing sewer and water main removal and reconnection work requirements.

WOODARD CR. CULVERT - WATER/SEWER ADJUST ACROSS TRENCH OPENING



1 inch = 50 feet

WOODARD CREEK CULVERT - ACCESS AND LAYDOWN/WORK AREA



1 inch = 100 feet

BID FORM**WOODARD CREEK CULVERT REPLACEMENT - AT FAIRVIEW AVENUE**

ITEM NO.	SPEC NO.	BID ITEM DESCRIPTION	UNIT	QUAN TITY	UNIT BID PRICE	TOTAL BID PRICE
1	101	Mobilization and Demobilization	Lump Sum	1		
2	102	Construction Surveying	Lump Sum	1		
3	103	Traffic Maintenance	Lump Sum	1		
4	202	Clearing and Grubbing	Lump Sum	1		
5	219	Removal/Disposal of Existing AC Pavement	Square Foot	2400		
6	204	Culvert Excavation (Unusable)	Cubic Yard	780		
7	204	Culvert Excavation (Usable)	Cubic Yard	1,320		
8	208	Compaction Control By Contractor	Lump Sum	1		
9	205/ 208	Type II Fill and Backfill (Including Mechanical Compaction)	Cubic Yard	745		
10	205/ 208	Type III Fill and Backfill (Including Mechanical Compaction)	Cubic Yard	35		
11	206	Leveling Course	Cubic Yard	200		
12	220	Implement SWPPP	Lump Sum	1		
13	712	Install City-Provided Aluminized Corrugated Steel Pipe Arch Culvert (73" x55")	Linear Foot	110		
14	712	Install City-Provided Aluminized Corrugated Steel Pipe Arch Culvert End Section (73" x55")	Each	1		
15	220	Remove Reinforced Concrete Headwall (portion of)	Lump Sum	1		

ITEM NO.	SPEC NO.	BID ITEM DESCRIPTION	UNIT	QUAN TITY	UNIT BID PRICE	TOTAL BID PRICE
16	306	Reconstruct Reinforced Concrete Headwall	Lump Sum	1		
17	702	Woven Geotextile Fabric	Square Yard	2400		
18	401	Asphaltic Concrete Pavement	Ton	32		
19	212	Rock Slope Protection	Ton	490		
20	708	Seeding (Type I)	1000 SF	18		
21	710	Topsoil (8")	1000 SF	18		
22	711	Protect Existing Underground Fiber Optic Cable Across Culvert Trench Opening	Lump Sum	1		
23	711	Protect Existing Natural Gas Main Across Culvert Trench Opening	Lump Sum	1		
24	711	Remove Existing Sewer Main Within Culvert Trench Opening/Reinstall During Backfill of Culvert	Lump Sum	1		
25	711	Remove Existing Water Main Within Culvert Trench Opening/Reinstall During Backfill of Culvert	Lump Sum	1		
26	704	Furnish and Install 4" Thick Insulation	Board Foot	256		
27	603	Furnish and Install 10" Gate Valve	Each	1		

Grand Total All Bid Items: \$_____

Name of Bidding Company_____

Address of Bidding Company_____

Signature of Company Representative _____ Date _____

Printed Name of Company Representative_____

Phone#/Email_____

BID BOND

KNOW ALL THESE PRESENTS: That we _____

(Name of Contractor)

_____ a _____ hereinafter
(Corporation, Partnership, Individual)

called "Principal" and _____ of
(Surety)

_____, State of _____ hereinafter called the
"Surety" are held and firmly bound unto the City of Homer, hereinafter called "Owner," in the penal sum of

_____ dollars (\$ _____) in lawful money of the United States, for the payment of which sum well and truly to be made, we bind ourselves, our heirs, executors, administrators and successors, jointly and severally, firmly by these presents.

THE CONDITIONS OF THIS OBLIGATIONS are such that: Whereas, the Principal has herewith submitted his or its BID for _____ said bid, by reference thereto, being hereby made a part hereof.

NOW, THEREFORE, if the Bid submitted by the Principal is accepted and the Contract awarded to the Principal, and if the Principal shall execute the proposed Contract and shall furnish such Performance and Payment Bond as required by the Contract Documents within the time fixed by the documents, then this obligation shall be void: if the Principal shall fail to execute the proposed Contract and furnish the Bond, the Surety hereby agrees to pay the Owner the penal sum as liquidated damages: _____

Signed and sealed this _____ day of _____, 2021

ATTEST:

(Principal's Corporate Secretary)

Affix CORPORATE SEAL if applicable

(Principal)

(Address-Zip Code)

(Witness as to Principal)

(Address-Zip Code)

(Surety)

ATTEST:

By: _____
(Attorney-in-Fact)

(Surety) Secretary

(Affix SURETY'S SEAL)

(Address Zip Code)

(Witness as to Surety)

(Address-Zip Code)

Notes:

If Principal is Partnership, all partners must execute bond. The Attorney-in-Fact, who executes this bond on behalf of the Surety, must attach a copy of her Power-of-Attorney as evidence of her authority.

CONTRACT

This Contract, made and entered into by and between the City of Homer, Alaska, a Municipal Corporation, hereinafter called the "City" and

(Company Name)

Hereinafter called the "Contractor".

I. CONTRACT DOCUMENTS

The Contractor, in consideration of the sum to be paid by the City agrees to furnish all materials, tools, labor, machinery and appurtenances to perform the work set forth in the Contract documents, including:

- a. Signed copy of the Bid;
- b. Performance Bond;
- c. Payment Bond;
- d. Bid Bond
- e. The 2011 Homer Standard Construction Specifications;
- f. All Addenda, totaling ____;
- g. The drawings which consist of 5 sheets titled Woodard Creek Culvert Replacement at Fairview Avenue

Said Contract Documents are fully and completely incorporated as part of the Contract as if the same were fully set forth herein.

In consideration of the performance of the work as set forth in these Contract Documents, the City agrees to pay to the Contractor the amounts specified in the Contract Documents and to make such payments upon the Contractor's invoicing as approved by the City.

II. CONTRACT COMPLETION TIME

The Contractor agrees to complete the Project, in all respects on or before November 30, 2021.

III. CONTRACT AMOUNT

\$ _____

In Numbers

\$ _____

In Words

IV. LIQUIDATED DAMAGES

Liquidated damages in the amount of **\$350.00** per day will apply to the Contractor's unexcused delay in the Completion of Construction. The liquidated damage amount specified herein shall only apply to damages and expenses the Owner may incur as a result of a delay in placing the facility into use and operation exclusive of third party damages or claims. The liquidated damage amount shall not cover any damages or expenses the Owner may incur as a result of the Contractor's unexcused delay in completing any portion of the entire Project, which delay results in whole or in part in delay, disruption, hindrance, interference, damages or expenses to any third party. The Contractor shall remain liable for the full amount of any such delay damages or expenses suffered by any third party without limitation by any liquidated damage provision set forth in the Contract.

IN WITNESS WHEREOF, we, the parties hereto, each herewith subscribe the same this _____ day of _____, 2021.

CITY OF HOMER

By: _____
Robert Dumouchel

Title: City Manager

CONTRACTOR

(Contractor)

By: _____

Title: _____

PERFORMANCE BOND

KNOW ALL THESE PRESENTS: That we _____
(Name of Contractor)

_____ a _____
(Corporation, Partnership, Individual)

hereinafter called "Principal" and _____
(Surety)

of _____, State of _____

hereinafter called the "Surety" are held and firmly bound unto the City of Homer, hereinafter called "Owner," in the penal sum of _____ dollars (\$_____) in lawful money of the United States, for the payment of which sum well and truly to be made, we bind ourselves, our heirs, executors, administrators and successors, jointly and severally, firmly by these presents.

THE CONDITIONS OF THIS OBLIGATION are such that Whereas, the Principal has or is about to enter into a certain contract with the Owner, a copy of which is hereto attached and made a part hereof for the construction of:

NOW, THEREFORE, if the Principal shall well, truly and faithfully perform its duties, all the undertakings, covenants, terms, conditions, and agreements of said contract during the original term thereof, and any extensions thereof which may be granted by the Owner, with or without notice to the Surety, and if it shall satisfy all claims and demands incurred under such contract, and shall fully indemnify and save harmless the Owner from all costs and damages which it may suffer by reason of failure to do so, and shall reimburse and repay the Owner all outlay and expense which the Owner may incur in making good any default, then this obligations shall be void; otherwise to remain in full force and effect.

PROVIDED, FURTHER, that the said surety, for value received hereby stipulates and agrees that no change, extension of time, alteration or addition to the terms of the contract or the work to be performed thereunder or the specifications accompanying the same shall in any wise affect it obligation on this bond, and it does hereby waive notice of any such change, extension of time, alteration or addition to the terms of the contract or to the work or to the specifications.

PROVIDED, FURTHER, that no final settlement between the Owner and the Principal shall abridge the right of any beneficiary hereunder, whose claim may be unsatisfied.

IN WITNESS WHEREOF, this instrument is executed in five (5) counterparts, each one of which shall be deemed and original, this the _____ day of _____, 2021.

ATTEST:

(Principal's Corporate Secretary)

(Principal)

Affix CORPORATE SEAL if applicable

(Address-Zip Code)

(Witness as to Principal)

(Address - Zip Code)

(Surety)

ATTEST:

By: _____
(Attorney-in-Fact)

(Surety) Secretary

(Address-Zip Code)

(Affix SURETY'S SEAL)

(Witness as to Surety)

(Address-Zip Code)

Notes:

If Principal is Partnership, all partners must execute bond. The Attorney-in-Fact, who executes this bond on behalf of the surety, must attach a copy of his Power-of-Attorney as evidence of his authority.

PAYMENT BOND

KNOW ALL THESE PRESENTS: That we _____
(Name of Contractor)

_____ a _____
(Corporation, Partnership, Individual)

hereinafter called "Principal" and _____
(Surety)

of _____, State of _____

hereinafter called the "Surety" are held and firmly bound unto the City of Homer,

hereinafter called "Owner," in the penal sum of _____

dollars (\$_____) in lawful money of the United States, for the payment of which sum well and truly to be made, we bind ourselves, our heirs, executors, administrators and successors, jointly and severally, firmly by these presents.

THE CONDITIONS OF THIS OBLIGATIONS are such that Whereas, the Principal has or is about to enter into a certain contract with the Owner, a copy of which is hereto attached and made a part hereof for the construction of:

NOW, THEREFORE, if the Principal shall promptly make payment to all persons, firms, subcontractors and corporations furnishing material for, or performing labor in the prosecution of the work provided for in such contract, and any authorized extension or modification thereof, including all amounts due for material, lubricants, fuels, repairs on machinery, equipment and tools, consumed or used in connection with the construction of such work, and all insurance premiums on said work, and for all labor performed in such work, whether by subcontractor or otherwise, then this obligation shall be void: otherwise to remain in full for and effect.

PROVIDED, FURTHER, that the said Surety, for value received hereby stipulates and agrees that no change, extension of time, alteration or addition to the terms of the contract or the work to be performed thereunder or the specifications accompanying the same shall in any wise affect it obligation on this bond, and it does hereby waive notice of any such change, extension of time, alteration or addition to the terms of the contract or to the work or to the specifications.

PROVIDED, FURTHER, that no final settlement between the Owner and the Principal shall abridge the right of any beneficiary hereunder, whose claim may be unsatisfied.

IN WITNESS WHEREOF, this instrument is executed in five (5) counterparts, each one of which shall be deemed and original, this the _____ day of _____, 2021.

ATTEST:

(Principal's Corporate Secretary)

(Principal)

Affix CORPORATE SEAL if applicable

(Address-Zip Code)

(Witness as to Principal)

(Address-Zip Code)

(Surety)

ATTEST:

By: _____
(Attorney-in-Fact)

(Surety) Secretary

(Address-Zip Code)

(Affix SURETY'S SEAL)

(Witness as to Surety)

(Address-Zip Code)

Notes:

If Principal is Partnership, all partners must execute bond. The Attorney-in-Fact, who executes this bond on behalf of the Surety, must attach a copy of her Power-of-Attorney as evidence of her authority.

**CONTRACTOR'S QUESTIONNAIRE
NOTICE TO CONTRACTORS**

Prior to Award, this questionnaire shall be completely filled out for the project upon which a bid is submitted.

A. FINANCIAL

1. Have you ever failed to complete a contract on account of insufficient resources?

2. Have you made sufficient arrangements to finance the work? _____

If so, with whom and for what amount? _____

If so, with what company? _____

B. EQUIPMENT

1. Set forth below the equipment which you have available for the work, which you propose to do. This equipment should be listed in detail (General statements will not be accepted).

NO.	ITEMS	TYPE	SIZE/CAPACITY	PRESENT VALUE

2. Do you thoroughly understand that in case the contract is awarded to you, you may be required to use any or all of the equipment listed on the work covered by this contract?

3. Do you propose to purchase any equipment for use on this project should the contract be awarded to you? If so, state type, quantity and approximate cost.

4. Do you propose to rent any equipment for this work? _____
If so, state type, quantity, and reason for renting. _____

5. Have you made contracts or received firm offers for all necessary materials with the prices used in preparing your proposal? _____

6. Do you intend to plan to subcontract any of the work? _____
If so, what types or portions of the work. _____

Approximate value \$ _____ Percent of total bid _____

C. EXPERIENCE

1. How many years has your organization been in business as a general contractor under your present business name? _____

2. How many years of experience in construction work has your organization had:

a) As a General Contractor _____.

b) As a Subcontractor _____.

3. List previous contracts you have completed of a similar nature to this proposed contract:

a) _____

b) _____

c) _____

d) _____

e) _____

4. List projects which you currently have under contract or expect to have under contract during the life of this contract:

a) _____

b) _____

c) _____

Use additional sheets as necessary.

5. List your staff you plan to use on this project and the position they will fill for this project (include managerial and clerical personnel that will provide support services).

STAFF MEMBER

POSITION

Signature: _____

Title: _____

EQUAL EMPLOYMENT OPPORTUNITY CLAUSE

During the performance of this contract, the contractor agrees to comply with OFCC Regulations 40 CFR 60.1.4 (1) through (7) as follows:

1. The contractor will not discriminate against any employee or applicant for employment because of race, color, religion, sex or national origin. The contractor will take affirmative action to ensure that applicants are employed, and that employees are treated during employment without regard to their race, color, religion, sex, or national origin. Such action shall include, but not be limited to the following: Employment, upgrading, demotion, or transfer, recruitment or recruitment advertising; layoff or termination; rates of pay or other forms of compensation; and selection for training, including apprenticeship. The contractor agrees to post in conspicuous places, available to employees and applicants for employment, notices to be provided by the contracting officer setting forth the provisions of this nondiscrimination clause.

2. The contractor will, in all solicitations or advertisements for employees placed by or on behalf of the contractor, state that all qualified applicants will receive consideration for employment without regard to race, color, religion, sex, or national origin.

1. The contractor will send to each labor union or representative of workers with whom he has a collective bargaining agreement or other contract or understanding, a notice to be provided by the agency contracting officer, advising the labor union or workers' representative of the contractor's commitments under Section 202 of Executive Order 11246 of September 24, 1965 and shall post copies of the notice in conspicuous places available to employees and applicants for employment.

2. The contractor will comply with all provisions of executive order 11246 of September 24, 1965 and of the rules, regulations, and relevant orders of the Secretary of Labor.

3. The contractor will furnish all information and reports required by Executive Order 11246 of September 24, 1965 and by the rules, regulations, and orders of the secretary of labor, or pursuant thereto, and will permit access of his books, records, and accounts by the contracting agency and the secretary of Labor for purposes of investigation to ascertain compliance with such rules, regulations, and orders.

4. In the event of the contractor's noncompliance with the nondiscrimination clauses of this contract or with any such rules, regulations or orders, this contract may be canceled, terminated or suspended in whole or in part and the contractor may be declared ineligible for further government contracts in accordance with procedures authorized in executive order 11246 of September 24, 1965 and such other sanctions may be imposed and remedies invoked as provided in executive order 11246 of September 24, 1965 or by rule, regulation or order of the Secretary of Labor as otherwise provided by law.

5. The contractor will include the provisions of paragraphs (1) through (7) in every subcontract or purchase order unless exempted by rules, regulations, or orders of the Secretary of Labor issued pursuant to section 204 of Executive Order 11246 of September 24, 1965 so that such provisions will be binding upon each subcontractor or vendor. The contractor will take such action with respect to any subcontract or purchase order as the contracting agency may direct as a means of enforcing such provisions including sanctions for noncompliance: Provided, however that in the event the contractor becomes involved in, or is threatened with litigation with a subcontractor or vendor as a result of such direction by the contracting agency, the contractor may request the United States to enter into such litigation to protect the interest of the United States.

(Signature)

(Title)

(Date)

This form (2 pages) must be included with the Bid Part B, or the Bid will be considered non-responsive.



PAMPHLET No. 600

Title 36. Public Contracts
AS 36.05

Laborers' and Mechanics' MINIMUM RATES OF PAY

Effective April 1, 2021
Issue 42

**DEPARTMENT OF LABOR
AND WORKFORCE DEVELOPMENT**
Wage and Hour Administration



THE STATE
of **ALASKA**
GOVERNOR MIKE DUNLEAVY

Department of Labor and Workforce Development

Office of the Commissioner

Post Office Box 111149
Juneau, Alaska 99811
Main: 907.465.2700
fax: 907.465-2784

April 1, 2021

TO ALL CONTRACTING AGENCIES:

At the Alaska Department of Labor and Workforce Development, our goal is putting Alaskans to work. This pamphlet is designed to help contractors awarded public construction contracts understand the most significant laws of the State of Alaska pertaining to prevailing wage.

This pamphlet identifies current prevailing wage rates for public construction contracts (any construction projects awarded for the State of Alaska or its political subdivisions, such as local governments and certain non-profit organizations). Because these rates may change in a subsequent determination, please be sure you are using the appropriate rates. The rates published in this edition become effective April 1, 2021.

The prevailing wage rates contained in this pamphlet are applicable to public construction projects with a final bid date of April 11, 2021, or later. As the law now provides, these rates will remain stable during the life of a contract or for 24 calendar months, whichever is shorter. **The 24-month period begins on the date the prime contract is awarded.** Upon expiration of the initial 24-month period, the latest wage rates issued by the department shall become effective for a subsequent 24-month period or until the original contract is completed, whichever occurs first. This process shall be repeated until the original contract is completed.

The term "original contract" means the signed contract that resulted from the original bid and any amendments, including changes of work scope, additions, extensions, change orders, and other instruments agreed to by the parties that have not been subject to subsequent open bid procedures.

If a higher federal rate is required due to partial federal funding or other federal participation, the higher rate must be paid.

For additional copies of this pamphlet go to: <http://labor.state.ak.us/lss/pamp600.htm>

For questions regarding prevailing wage or employment preference requirements, please contact the nearest Wage and Hour office. These offices are listed on Page x.

Sincerely,

A handwritten signature in black ink that reads "Tamika L. Ledbetter".

Dr. Tamika L. Ledbetter
Commissioner

Table of Contents

Excerpts from Alaska Law

Sec. 36.05.005. Applicability.....	iv
Sec. 36.05.010. Wage rates on public construction.....	iv
Sec. 36.05.040. Filing schedule of employees, wages paid and other information.....	iv
Sec. 36.05.045. Notice of work and completion; withholding of payment.....	iv
Sec. 36.05.060. Penalty for violation of this chapter.....	v
Sec. 36.05.070. Wage rates in specifications and contracts for public works.....	v
Sec. 36.05.080. Failure to pay agreed wages.....	v
Sec. 36.05.090. Payment of wages from withheld payments and listing contractors who violate contracts.....	v
Sec. 36.05.900. Definition.....	vi

Excerpts from Alaska Administrative Code

8 AAC 30.051. Purpose.....	vi
8 AAC 30.052. Board and lodging; remote sites.....	vi
8 AAC 30.054. Per diem instead of board and lodging.....	vi
8 AAC 30.056. Alternative arrangement.....	vii
8 AAC 30.900. General definitions (selected excerpts).....	vii

Additional Information

Per Diem.....	vii
Laborer Classification Clarification.....	viii
Apprentice Rates.....	viii
Fringe Benefit Plans.....	viii
Special Prevailing Wage Rate Determination.....	ix
Alaska Employment Preference Information.....	ix
Labor Standards and Safety Notice Requests.....	x
Debarment List.....	x

Wage Rates	Pages 1-26
-------------------------	------------

Note to Readers: The statutes and administrative regulations listed in this publication were taken from the official codes, as of the effective date of the publication. However, there may be errors or omissions that have not been identified and changes that occurred after the publication was printed. This publication is intended as an informational guide only and is not intended to serve as a precise statement of the statutes and regulations of the State of Alaska. To be certain of current laws and regulations, please refer to the official codes.

- (2) shall withhold from the final payment an amount sufficient to pay the department's estimate of what may be needed to compensate the employees of any contractors under investigation on this construction contract, and any unpaid filing fees.
- (d) The notice and filing fee required under (a) of this section may be filed after work has begun if
 - (1) The public construction contract is for work undertaken in immediate response to an emergency; and
 - (2) The notice and fees are filed not later than 14 days after the work has begun.
- (e) A false statement made on a notice required by this section is punishable under AS 11.56.210.

Sec. 36.05.060. Penalty for violation of this chapter.

A contractor who violates this chapter is guilty of a misdemeanor and upon conviction is punishable by a fine of not less than \$100 nor more than \$1,000, or by imprisonment for not less than 10 days nor more than 90 days, or by both. Each day a violation exists constitutes a separate offense.

Sec. 36.05.070. Wage rates in specifications and contracts for public works.

- (a) The advertised specifications for a public construction contract that requires or involves the employment of mechanics, laborers, or field surveyors must contain a provision stating the minimum wages to be paid various classes of laborers, mechanics, or field surveyors and that the rate of wages shall be adjusted to the wage rate under AS 36.05.010.
- (b) Repealed by §17 ch 142 SLA 1972.
- (c) A public construction contract under (a) of this section must contain provisions that
 - (1) the contractor or subcontractors of the contractor shall pay all employees unconditionally and not less than once a week;
 - (2) wages may not be less than those stated in the advertised specifications, regardless of the contractual relationship between the contractor or subcontractors and laborers, mechanics, or field surveyors;
 - (3) the scale of wages to be paid shall be posted by the contractor in a prominent and easily accessible place at the site of the work;
 - (4) the state or a political subdivision shall withhold so much of the accrued payments as is necessary to pay to laborers, mechanics, or field surveyors employed by the contractor or subcontractors the difference between
 - (A) the rates of wages required by the contract to be paid laborers, mechanics, or field surveyors on the work; and
 - (B) the rates of wages in fact received by laborers, mechanics, or field surveyors.

Sec. 36.05.080. Failure to pay agreed wages.

Every contract within the scope of AS 36.05.070 shall contain a provision that if it is found that a laborer, mechanic, or field surveyor employed by the contractor or subcontractor has been or is being paid a rate of wages less than the rate of wages required by the contract to be paid, the state or its political subdivision may, by written notice to the contractor, terminate the contractor's right to proceed with the work or the part of the work for which there is a failure to pay the required wages and to prosecute the work to completion by contract or otherwise, and the contractor and the contractor's sureties are liable to the state or its political subdivision for excess costs for completing the work.

Sec. 36.05.090. Payment of wages from withheld payments and listing contractors who violate contracts.

- (a) The state disbursing officer in the case of a state public construction contract and the local fiscal officer in the case of a political subdivision public construction contract shall pay directly to laborers, mechanics, or field surveyors from accrued payments withheld under the terms of the contract the wages due laborers, mechanics, or field surveyors under AS 36.05.070.
- (b) The state disbursing officer or the local fiscal officer shall distribute to all departments of the state government and to all political subdivisions of the state a list giving the names of persons who have disregarded their obligations to employees. A person appearing on this list and a firm, corporation, partnership, or association in which the person has an interest may not work as a contractor or

(3) the contractor pays the per diem to each laborer, mechanic, or field surveyor on the same day that wages are paid.

(b) A contractor may not pay per diem instead of board and lodging on a highway project located

(1) west of Livengood on the Elliot Highway, AK-2;

(2) on the Dalton Highway, AK-11;

(3) north of milepost 20 on the Taylor Highway, AK-5;

(4) east of Chicken on the Top of the World Highway; or

(5) south of Tetlin Junction to the Alaska-Canada border on the Alaska Highway, AK-2.

8 AAC 30.056. Alternative arrangement. Upon a contractor's written request, the commissioner may approve an alternative board and lodging or per diem arrangement, provided

(1) the arrangement does not reduce the laborer, mechanic, or field surveyor's wages below the prevailing wage rate; and

(2) the laborer, mechanic, or field surveyor voluntarily enters into and signs the written arrangement; a labor organization representing laborers, mechanics, or field surveyors may enter into the written agreement on their behalf.

8 AAC 30.900. General definitions (selected excerpts only):

In this chapter and in AS 36

(22) "domiciled resident" means a person living within 65 road miles of a public construction project, or in the case of a highway project, the mid-point of the project, for at least 12 consecutive months prior to the award of the public construction project;

(23) "employed on the project" means the time period from the date the laborer, mechanic, or field surveyor first reports on-site to the project through the final date the person reports on-site to the project.

ADDITIONAL INFORMATION

PER DIEM

Notice: New regulations relating to board and lodging and per diem went into effect on November 25, 2018. The regulations provide a comprehensive set of requirements for the provision of board and lodging or per diem for workers on remote projects. Please refer to Alaska Administrative Code 8 AAC Chapter 30 and read the chapter carefully.

The Alaska Department of Labor and Workforce Development has determined that per diem is an established work practice for certain work classifications. These classifications are indicated throughout the Pamphlet by an asterisk (*) under the classification title. If all of the conditions of 8 AAC 30.054 are met, an employer may pay workers in these classifications per diem instead of providing board and lodging on a remote project.

Per Diem Rate: As of May 1st, 2019, the minimum per diem rate is \$100.00 per day, or part thereof, the worker is employed on the project. In the event that a contractor provides lodging facilities, but no meals, the department will accept a payment of \$48 per day for meals to meet the per diem requirements.

SPECIAL PREVAILING WAGE RATE DETERMINATION

Special prevailing wage rate determinations may be requested for special projects or a special worker classification if the work to be performed does not conform to traditional public construction for which a prevailing wage rate has been established under 8 AAC 30.050(a) of this section. Requests for special wage rate determinations must be in writing and filed with the Commissioner at least 30 days before the award of the contract. An applicant for a special wage rate determination shall have the responsibility to support the necessity for the special rate. An application for a special wage rate determination filed under this section must contain:

- (1) a specification of the contract or project on which the special rates will apply and a description of the work to be performed;
- (2) a brief narrative explaining why special wage rates are necessary;
- (3) the job class or classes involved;
- (4) the special wage rates the applicant is requesting, including survey or other relevant wage data to support the requested rates;
- (5) the approximate number of employees who would be affected; and
- (6) any other information which might be helpful in determining if special wage rates are appropriate.

Requests made pursuant to the above should be addressed to:

Director
Alaska Department of Labor and Workforce Development
Labor Standards and Safety Division
Wage and Hour Administration
P.O. Box 111149
Juneau, AK 99811-1149

-or-
Email: statewide.wagehour@alaska.gov

EMPLOYMENT PREFERENCE INFORMATION

In October 2019, the Alaska Attorney General issued a formal opinion stating that the Alaska Statutes 36.10.150 of the State's 90% Employment Preference law, also known as the Alaska Resident Hire law, violates both the U.S. and Alaska Constitutions. As a result, the state has stopped all enforcement activity. A copy of the Attorney General opinion is found here:

http://law.alaska.gov/pdf/opinions/opinions_2019/19-005_AK-hire.pdf

Laborers' & Mechanics' Minimum Rates of Pay

Class Code	Classification of Laborers & Mechanics	BHR	H&W	PEN	TRN	Other	Benefits	THR
------------	--	-----	-----	-----	-----	-------	----------	-----

Boilermakers

*See per diem note on last page

A0101	Boilermaker (journeyman)	47.03	8.57	17.02	1.90	VAC 3.50	SAF 0.34	78.36
--------------	--------------------------	-------	------	-------	------	-------------	-------------	-------

Bricklayers & Blocklayers

*See per diem note on last page

A0201	Blocklayer	42.16	9.00	10.05	0.62	L&M 0.20		62.03
--------------	------------	-------	------	-------	------	-------------	--	-------

Bricklayer
Marble or Stone Mason
Refractory Worker (Firebrick, Plastic, Castable, and Gunite Refractory Applications)
Terrazzo Worker
Tile Setter

A0202	Tuck Pointer Caulker	42.16	9.00	10.05	0.62	L&M 0.20		62.03
--------------	----------------------	-------	------	-------	------	-------------	--	-------

Cleaner (PCC)

A0203	Marble & Tile Finisher	35.99	9.00	10.05	0.62	L&M 0.20		55.86
--------------	------------------------	-------	------	-------	------	-------------	--	-------

Terrazzo Finisher

A0204	Torginal Applicator	40.10	9.83	8.50	0.55	L&M 0.15	0.87	60.00
--------------	---------------------	-------	------	------	------	-------------	------	-------

Carpenters, Region I (North of 63 latitude)

*See per diem note on last page

N0301	Carpenter (journeyman)	38.34	10.08	15.23	1.10	L&M 0.10	SAF 0.10	64.95
--------------	------------------------	-------	-------	-------	------	-------------	-------------	-------

Lather/Drywall/Acoustical

Carpenters, Region II (South of N63 latitude)

*See per diem note on last page

S0301	Carpenter (journeyman)	38.34	10.08	15.77	1.10	L&M 0.10	SAF 0.10	65.49
--------------	------------------------	-------	-------	-------	------	-------------	-------------	-------

Lather/Drywall/Acoustical

Cement Masons

*See per diem note on last page

Wage benefits key: BHR=basic hourly rate; H&W=health and welfare; IAF=industry advancement fund; LEG=legal fund; L&M=labor/management fund; PEN=pension fund; SAF=safety; SUI=supplemental unemployment insurance; S&L=SUI & LEG combined; TRN=training; THR=total hourly rate; VAC=vacation

Cement Masons
 *See per diem note on last page

A0404	Group IV, including:	39.38	8.70	11.80	1.43		L&M 0.10	61.41
	Hand Powered Grinder							
	Preparing, scratching and browsing of all ceilings and walls, finished with terrazo or tile							
	Tunnel Worker							

A0405	Group V, including:	39.38	8.70	11.80	1.43		L&M 0.10	61.41
	Casting and finishing							
	EIFS Systems							
	Finishing of all interior and exterior plastering							
	Fireproofing (Pryocrete, Cafco, Albi-Clad, sprayed fiberglass)							
	Gypsum, Portland Cement							
	Kindred material and products							
	Operation and control of all types of plastering machines, including power tools and floats, used by the industry							
	Overcoating and maintenance of interior/exterior plaster surfaces							
	Plasterer							
	Veneer plastering process (Rapid Plaster, U.S.G. "Imperial Systems", and Pabcoat Systems")							
	Venetian plaster and color-integrated Italian/Middle-Eastern line plaster							

Culinary Workers

A0501	Baker/Cook	28.37	7.31	7.56			LEG	43.24
A0503	General Helper	25.07	7.31	7.56			LEG	39.94
	Housekeeper							
	Janitor							
	Kitchen Helper							
A0504	Head Cook	28.97	7.31	7.56			LEG	43.84
A0505	Head Housekeeper	25.45	7.31	7.56			LEG	40.32
	Head Kitchen Help							

Dredgemen
 *See per diem note on last page

Wage benefits key: BHR=basic hourly rate; H&W=health and welfare; IAF=industry advancement fund; LEG=legal fund; L&M=labor/management fund; PEN=pension fund; SAF=safety; SUI=supplemental unemployment insurance; S&L=SUI & LEG combined; TRN=training; THR=total hourly rate; VAC=vacation

Class Code	Classification of Laborers & Mechanics	BHR	H&W	PEN	TRN	Other	Benefits	THR
------------	--	-----	-----	-----	-----	-------	----------	-----

Electricians
*See per diem note on last page

A0707	Straight Line Installer - Repairman	48.78	14.05	16.61	0.95	L&M	LEG	80.74
A0708	Powderman	57.04	14.05	18.90	0.95	L&M	LEG	91.34
A0710	Material Handler	26.57	13.76	5.30	0.15	L&M	LEG	46.08
A0712	Tree Trimmer Groundman	28.37	14.05	12.59	0.15	L&M	LEG	55.46
A0713	Journeyman Tree Trimmer	37.30	14.05	12.86	0.15	L&M	LEG	64.66
A0714	Vegetation Control Sprayer	40.85	14.05	12.97	0.15	L&M	LEG	68.32
A0715	Inside Journeyman Communications CO/PBX	40.27	14.05	13.85	0.95	L&M	LEG	69.47

Elevator Workers
*See per diem note on last page

A0802	Elevator Constructor	42.76	15.88	19.31	0.64	L&M	VAC	83.87
A0803	Elevator Constructor Mechanic	61.08	15.88	19.31	0.64	L&M	VAC	104.23

Heat & Frost Insulators/Asbestos Workers
*See per diem note on last page

A0902	Asbestos Abatement-Mechanical Systems	38.68	9.24	11.01	1.20	SAF		60.25
A0903	Asbestos Abatement/General Demolition All Systems	38.68	9.24	11.01	1.20	SAF		60.25
A0904	Insulator, Group II	38.68	9.24	11.01	1.20	SAF		60.25
A0905	Fire Stop	38.68	9.24	11.01	1.20	SAF		60.25

Ironworkers
*See per diem note on last page

A1101	Ironworkers, including:	38.87	9.51	24.28	0.74	L&M	IAF	73.84
-------	-------------------------	-------	------	-------	------	-----	-----	-------

Wage benefits key: BHR=basic hourly rate; H&W=health and welfare; IAF=industry advancement fund; LEG=legal fund; L&M=labor/management fund; PEN=pension fund; SAF=safety; SUI=supplemental unemployment insurance; S&L=SUI & LEG combined; TRN=training; THR=total hourly rate; VAC=vacation

Laborers (The Alaska areas north of N63 latitude and east of W138 longitude)
 *See per diem note on last page

						L&M	LEG	
N1201	Group I, including:	32.00	8.95	20.66	1.30	0.20	0.20	63.31
	Ditch Digger							
	Dumpman							
	Environmental Laborer (hazard/toxic waste, oil spill)							
	Fence Installer							
	Fire Watch Laborer							
	Flagman							
	Form Stripper							
	General Laborer							
	Guardrail Laborer, Bridge Rail Installer							
	Hydro-seeder Nozzleman							
	Laborer, Building							
	Landscaper or Planter							
	Laying of Mortarless Decorative Block (retaining walls, flowered decorative block 4 feet or less - highway or landscape work)							
	Material Handler							
	Pneumatic or Power Tools							
	Portable or Chemical Toilet Serviceman							
	Pump Man or Mixer Man							
	Railroad Track Laborer							
	Sandblast, Pot Tender							
	Saw Tender							
	Slurry Work							
	Steam Cleaner Operator							
	Steam Point or Water Jet Operator							
	Storm Water Pollution Protection Plan Worker (SWPPP Worker - erosion and sediment control Laborer)							
	Tank Cleaning							
	Utiliwalk & Utilidor Laborer							
	Watchman (construction projects)							
	Window Cleaner							

						L&M	LEG	
N1202	Group II, including:	33.00	8.95	20.66	1.30	0.20	0.20	64.31
	Burning & Cutting Torch							
	Cement or Lime Dumper or Handler (sack or bulk)							
	Certified Erosion Sediment Control Lead (CESCL Laborer)							
	Choker Splicer							
	Chucktender (wagon, air-track & hydraulic drills)							
	Concrete Laborer (power buggy, concrete saws, pumcrete nozzleman, vibratorman)							
	Culvert Pipe Laborer							

Wage benefits key: BHR=basic hourly rate, H&W=health and welfare, IAF=industry advancement fund, LEG=legal fund, L&M=labor/management fund, PEN=pension fund, SAF=safety, SUI=supplemental unemployment insurance, S&L=SUI & LEG combined, TRN=training, THR=total hourly rate, VAC=vacation

Class Code	Classification of Laborers & Mechanics	BHR	H&W	PEN	TRN	Other	Benefits	THR
------------	--	-----	-----	-----	-----	-------	----------	-----

Laborers (The Alaska areas north of N63 latitude and east of W138 longitude)
 *See per diem note on last page

N1204	Group IIIA	37.18	8.95	20.66	1.30	L&M	LEG	68.49
	Drill Doctor (in the field)							
	Driller (including, but not limited to wagon drills, air-track drills, hydraulic drills)							
	Pioneer Drilling & Drilling Off Tugger (all type drills)							
	Pipelayers							
	Powderman (Employee Possessor)							
	Storm Water Pollution Protection Plan Specialist (SWPPP Specialist)							
	Traffic Control Supervisor, DOT Qualified							

N1205	Group IV	21.57	8.95	20.66	1.30	L&M	LEG	52.88
	Final Building Cleanup							
	Permanent Yard Worker							

N1206	Group IIIB	40.97	6.24	20.66	1.30	L&M	LEG	69.57
	Driller (including, but not limited to wagon drills, air-track drills, hydraulic drills)(over 5,000 hours)							
	Federal Powderman (Responsible Person in Charge)							
	Grade Checking (setting or transferring of grade marks, line and grade, GPS, drones)							
	Pioneer Drilling & Drilling Off Tugger (all type drills)(over 5,000 hours)							
	Stake Hopper							

Laborers (The area that is south of N63 latitude and west of W138 longitude)
 *See per diem note on last page

S1201	Group I, including:	32.00	8.95	20.66	1.30	L&M	LEG	63.31
	Asphalt Worker (shovelman, plant crew)							
	Brush Cutter							
	Camp Maintenance Laborer							
	Carpenter Tender or Helper							
	Choke Setter, Hook Tender, Rigger, Signalman							
	Concrete Labor (curb & gutter, chute handler, curing, grouting, screeding)							
	Crusher Plant Laborer							
	Demolition Laborer							
	Ditch Digger							
	Dumpman							
	Environmental Laborer (hazard/toxic waste, oil spill)							
	Fence Installer							

Wage benefits key: BHR=basic hourly rate, H&W=health and welfare, IAF=industry advancement fund, LEG=legal fund, L&M=labor/management fund, PEN=pension fund, SAF=safety, SUI=supplemental unemployment insurance, S&I=SUI & LEG combined, TRN=training, THR=total hourly rate, VAC=vacation

Class Code	Classification of Laborers & Mechanics	BHR	H&W	PEN	TRN	Other	Benefits	THR
------------	--	-----	-----	-----	-----	-------	----------	-----

Laborers (The area that is south of N63 latitude and west of W138 longitude)
 *See per diem note on last page

					L&M	LEG	
S1202	Group II, including:	33.00	8.95	20.66	1.30	0.20	0.20 64.31
	Green Cutter (dam work)						
	Gunite Operator						
	Hod Carrier						
	Jackhammer/Chipping Gun or Pavement Breaker						
	Laser Instrument Operator						
	Laying of Mortarless Decorative Block (retaining walls, flowered decorative block over 4 feet - highway or landscape work)						
	Mason Tender & Mud Mixer (sewer work)						
	Pilot Car						
	Pipelayer Helper						
	Plasterer, Bricklayer & Cement Finisher Tender						
	Powderman Helper						
	Power Saw Operator						
	Railroad Switch Layout Laborer						
	Sandblaster						
	Scaffold Building & Erecting						
	Sewer Caulker						
	Sewer Plant Maintenance Man						
	Thermal Plastic Applicator						
	Timber Faller, Chainsaw Operator, Filer						
	Timberman						

					L&M	LEG	
S1203	Group III, including:	33.90	8.95	20.66	1.30	0.20	0.20 65.21
	Bit Grinder						
	Camera/Tool/Video Operator						
	Guardrail Machine Operator						
	High Rigger & Tree Topper						
	High Scaler						
	Multiplate						
	Plastic Welding						
	Slurry Seal Squeegee Man						
	Traffic Control Supervisor						
	Welding Certified (in connection with laborer's work)						

					L&M	LEG	
S1204	Group IIIA	37.18	8.95	20.66	1.30	0.20	0.20 68.49
	Asphalt Raker, Asphalt Belly Dump Lay Down						
	Drill Doctor (in the field)						
	Driller (including, but not limited to wagon drills, air-track drills, hydraulic drills)						
	Pioneer Drilling & Drilling Off Tugger (all type drills)						

Wage benefits key: BHR=basic hourly rate, H&W=health and welfare; IAF=industry advancement fund, LEG=legal fund, L&M=labor/management fund, PEN=pension fund, SAF=safety, SUI=supplemental unemployment insurance, S&L=SUI & LEG combined, TRN=training, THR=total hourly rate, VAC=vacation

Painters, Region I (North of N63 latitude)
 *See per diem note on last page

						L&M	
N1302	Group II, including:	34.71	8.71	14.30	1.08	0.07	58.87
	Bridge Painter						
	Epoxy Applicator						
	General Drywall Finisher						
	Hand/Spray Texturing						
	Industrial Coatings Specialist						
	Machine/Automatic Taping						
	Pot Tender						
	Sandblasting						
	Specialty Painter						
	Spray						
	Structural Steel Painter						
	Wallpaper/Vinyl Hanger						

N1304	Group IV, including:	39.80	8.71	17.71	1.05	0.05	67.32
	Glazier						
	Storefront/Automatic Door Mechanic						

N1305	Group V, including:	28.63	8.71	5.02	0.83	0.07	43.26
	Carpet Installer						
	Floor Coverer						
	Heat Weld/Cove Base						
	Linoleum/Soft Tile Installer						

Painters, Region II (South of N63 latitude)
 *See per diem note on last page

						L&M	
S1301	Group I, including :	31.33	8.71	15.15	1.08	0.07	56.34
	Brush						
	General Painter						
	Hand Taping						
	Hazardous Material Handler						
	Lead-Based Paint Abatement						
	Roll						
	Spray						

S1302	Group II, including :	32.58	8.71	15.15	1.08	0.07	57.59
	General Drywall Finisher						
	Hand/Spray Texturing						
	Machine/Automatic Taping						

Wage benefits key: BHR=basic hourly rate; H&W=health and welfare; IAF=industry advancement fund; LEG=legal fund; L&M=labor/management fund; PEN=pens fund; SAF=safety; SUI=supplemental unemployment insurance; S&L=SUI & LEG combined; TRN=training; THR=total hourly rate; VAC=vacation

Class Code	Classification of Laborers & Mechanics	BHR	H&W	PEN	TRN	Other	Benefits	THR
------------	--	-----	-----	-----	-----	-------	----------	-----

Piledrivers
*See per diem note on last page

A1405	Diver (standby) **See note on last page	42.65	10.08	15.23	1.10	L&M	IAF	69.26
						0.10	0.10	
A1406	Dive Tender **See note on last page	41.65	10.08	15.23	1.10	L&M	IAF	68.26
						0.10	0.10	
A1407	Welder (American Welding Society, Certified Welding Inspector)	43.90	10.08	15.23	1.10	L&M	IAF	70.51
						0.10	0.10	

Plumbers, Region I (North of N63 latitude)
*See per diem note on last page

N1501	Journeyman Pipefitter	41.91	11.25	17.20	1.50	L&M	S&L	72.51
						0.65		
	Plumber							
	Welder							

Plumbers, Region II (South of N63 latitude)
*See per diem note on last page

S1501	Journeyman Pipefitter	41.00	11.13	15.02	1.55	L&M		68.90
						0.20		
	Plumber							
	Welder							

Plumbers, Region IIA (1st Judicial District)
*See per diem note on last page

X1501	Journeyman Pipefitter	38.82	13.37	11.75	2.50	L&M		66.68
						0.24		
	Plumber							
	Welder							

Power Equipment Operators
*See per diem note on last page

A1601	Group I, including:	42.53	10.70	13.50	1.00	L&M		67.88
						0.10	0.05	
	Asphalt Roller: Breakdown, Intermediate, and Finish							
	Back Filler							
	Barrier Machine (Zipper)							
	Beltcrete with Power Pack & similar conveyors							
	Bending Machine							
	Boat Coxswain							
	Bulldozer							
	Cableways, Highlines & Cablecars							

Wage benefits key: BHR=basic hourly rate, H&W=health and welfare; IAF=industry advancement fund, LEG=legal fund, L&M=labor/management fund, PEN=pension fund, SAF=safety, SUI=supplemental unemployment insurance, S&L=SUI & LEG combined, TRN=training, THR=total hourly rate; VAC=vacation

Class Code	Classification of Laborers & Mechanics	BHR	H&W	PEN	TRN	Other	Benefits	THR
------------	--	-----	-----	-----	-----	-------	----------	-----

Power Equipment Operators
 *See per diem note on last page

						L&M		
A1601	Group I, including:	42.53	10.70	13.50	1.00	0.10	0.05	67.88
	Remote Controlled Equipment							
	Scraper (through 40 yards)							
	Service Oiler/Service Engineer							
	Shot Blast Machine							
	Shovels, Backhoes, Excavators with all attachments, and Gradealls (3 yards & under)							
	Sideboom (under 45 tons)							
	Sub Grader (Gurries & similar types)							
	Tack Tractor							
	Truck Mounted Concrete Pump, Conveyor/Tele-belt, & Creter							
	Wate Kote Machine							

						L&M		
A1602	Group IA, including:	44.29	10.70	13.50	1.00	0.10	0.05	69.64
	Camera/Tool/Video Operator (Slipline)							
	Certified Welder, Electrical Mechanic, Camp Maintenance Engineer, Mechanic (over 10,000 hours)							
	Cranes (over 45 tons or 150 feet including jib & attachments)							
	(a) Clamshells & Draglines (over 3 yards)							
	(b) Tower Cranes							
	Licensed Water/Waste Water Treatment Operator							
	Loaders (over 5 yards)							
	Motor Patrol Grader, Dozer, Grade Tractor (finish: when finishing to final grade and/or to hubs, or for asphalt)							
	Power Plants (1000 k.w. & over)							
	Profiler, Reclaimer, and Roto-Mill							
	Quad							
	Scrapers (over 40 yards)							
	Screed							
	Shovels, Backhoes, Excavators with all attachments (over 3 yards)							
	Sidebooms (over 45 tons)							
	Slip Form Paver, C.M.I. & similar types							
	Topside (Asphalt Paver, Slurry machine, Spreaders, and similar types)							

						L&M		
A1603	Group II, including:	41.76	10.70	13.50	1.00	0.10	0.05	67.11
	Boiler - Fireman							
	Cement Hogs & Concrete Pump Operator							
	Conveyors (except those listed in Group I)							
	Hoists on Steel Erection, Towermobiles & Air Tuggers							
	Horizontal/Directional Drill Locator							
	Locomotives, Rod & Geared Engines							

Wage benefits key: BHR=basic hourly rate, H&W=health and welfare, IAF=industry advancement fund, LEG=legal fund, L&M=labor/management fund, PEN=pension fund, SAF=safety, SUI=supplemental unemployment insurance, S&L=SUI & LEG combined, TRN=training, THR=total hourly rate, VAC=vacation

Power Equipment Operators

*See per diem note on last page

					L&M			
A1605	Group IV, including:	34.83	10.70	13.50	1.00	0.10	0.05	60.18
	Crane Assistant Engineer/Rig Oiler							
	Drill Helper							
	Parts & Equipment Coordinator							
	Spotter							
	Steam Cleaner							
	Swamper (on trenching machines or shovel type equipment)							

Roofers

*See per diem note on last page

					L&M			
A1701	Rofer & Waterproofer	44.62	12.75	3.91	0.81	0.10	0.06	62.25
A1702	Rofer Material Handler	31.23	12.75	3.91	0.81	0.10	0.06	48.86

Sheet Metal Workers, Region I (North of N63 latitude)

*See per diem note on last page

					L&M			
N1801	Sheet Metal Journeyman	48.64	11.50	14.11	1.65	0.12		76.02
	Air Balancing and duct cleaning of HVAC systems							
	Brazing, soldering or welding of metals							
	Demolition of sheet metal HVAC systems							
	Fabrication and installation of exterior wall sheathing, siding, metal roofing, flashing, decking and architectural sheet metal work							
	Fabrication and installation of heating, ventilation and air conditioning ducts and equipment							
	Fabrication and installation of louvers and hoods							
	Fabrication and installation of sheet metal lagging							
	Fabrication and installation of stainless steel commercial or industrial food service equipment							
	Manufacture, fabrication assembly, installation and alteration of all ferrous and nonferrous metal work							
	Metal lavatory partitions							
	Preparation of drawings taken from architectural and engineering plans required for fabrication and erection of sheet metal work							
	Sheet Metal shelving							
	Sheet Metal venting, chimneys and breaching							
	Skylight installation							

Sheet Metal Workers, Region II (South of N63 latitude)

*See per diem note on last page

Wage benefits key: BHR=basic hourly rate; H&W=health and welfare; IAF=industry advancement fund; LEG=legal fund; L&M=labor/management fund; PEN=pension fund; SAF=safety; SUI=supplemental unemployment insurance; S&L=SUI & LEG combined; TRN=training; THR=total hourly rate; VAC=vacation

Truck Drivers

*See per diem note on last page

					L&M		
A2101	Group I, including:	41.94	11.83	13.14	1.15	0.10	68.16

- Air/Sea Traffic Controllers
- Ambulance/Fire Truck Driver (EMT certified)
- Boat Coxswain
- Captains & Pilots (air & water)
- Deltas, Commanders, Rollagons, & similar equipment (when pulling sleds, trailers or similar equipment)
- Dump Trucks (including rockbuggy, side dump, belly dump, & trucks with pups) over 40 yards up to & including 60 yards
- Helicopter Transporter
- Liquid Vac Truck/Super Vac Truck
- Material Coordinator or Purchasing Agent
- Ready-mix (over 12 yards up to & including 15 yards) (over 15 yards to be negotiated)
- Semi with Double Box Mixer
- Tireman, Heavy Duty/Fueler
- Water Wagon (250 Bbls and above)

					L&M		
A2102	Group IA including:	43.21	11.83	13.14	1.15	0.10	69.43

- Dump Trucks (including rockbuggy, side dump, belly dump & trucks with pups) over 60 yards up to & including 100 yards (over 100 yards to be negotiated)
- Jeeps (driver under load)
- Lowboys, including tractor attached trailers & jeeps, up to & including 12 axles (over 12 axles or 150 tons to be negotiated)

					L&M		
A2103	Group II, including:	40.68	11.83	13.14	1.15	0.10	66.90

- All Deltas, Commanders, Rollagons, & similar equipment
- Batch Trucks (8 yards & up)
- Batch Trucks (up to & including 7 yards)
- Boom Truck/Knuckle Truck (over 5 tons)
- Cacasco Truck/Heat Stress Truck
- Construction and Material Safety Technician
- Dump Trucks (including rockbuggy, side dump, belly dump, & trucks with pups) over 20 yards up to & including 40 yards
- Gin Pole Truck, Winch Truck, Wrecker (truck mounted "A" frame manufactured rating over 5 tons)
- Mechanics
- Oil Distributor Driver
- Partsman
- Ready-mix (up to & including 12 yards)
- Stringing Truck

Wage benefits key BHR=basic hourly rate, H&W=health and welfare, IAF=industry advancement fund, LEG=legal fund, L&M=labor/management fund, PEN=pension fund, SAF=safety, SUI=supplemental unemployment insurance, S&L=SUI & LEG combined, TRN=training, THR=total hourly rate, VAC=vacation

Truck Drivers
 *See per diem note on last page

A2105	Group IV, including:	39.28	11.83	13.14	1.15	L&M		0.10	65.50
	Tireman, Light Duty								
	Track Truck Equipment								
	Truck Vacuum Sweeper								
	Warehouseperson								
	Water Truck (Below 250 Bbls)								
	Water Truck (straight)								
	Water Wagon, Semi								

A2106	Group V, including:	38.52	11.83	13.14	1.15	L&M		0.10	64.74
	Buffer Truck								
	Bull Lifts & Fork Lifts, Fork Lifts with Power Boom & Swing Attachments (up to & including 5 tons)								
	Bus Operator (up to 30 passengers)								
	Farm Type Rubber Tired Tractor (when material handling or pulling wagons on a construction project)								
	Flat Beds, Single Rear Axle								
	Foam Distributor Truck Single Axle								
	Fuel Handler (station/bulk attendant)								
	Gear/Supply Truck								
	Gravel Spreader Box Operator on Truck								
	Hydro Seeders, Single axle								
	Pickups (pilot cars & all light-duty vehicles)								
	Rigger/Swamper								
	Tack Truck								
	Team Drivers (horses, mules, & similar equipment)								

Tunnel Workers, Laborers (The Alaska areas north of N63 latitude and east of W138 longitude)
 *See per diem note on last page

N2201	Group I, including:	35.20	8.95	20.66	1.30	L&M		0.20	LEG		0.20	66.51
	Brakeman											
	Mucker											
	Nipper											
	Storm Water Pollution Protection Plan Worker (SWPPP Worker - erosion and sediment control Laborer)											
	Topman & Bull Gang											
	Tunnel Track Laborer											

N2202	Group II, including:	36.30	8.95	20.66	1.30	L&M		0.20	LEG		0.20	67.61
	Burning & Cutting Torch											

Wage benefits key: BHR=basic hourly rate, H&W=health and welfare, IAF=industry advancement fund, LEG=legal fund, L&M=labor/management fund, PEN=pension fund, SAF=safety, SUI=supplemental unemployment insurance, S&L=SUI & LEG combined, TRN=training, THR=total hourly rate, VAC=vacation

Tunnel Workers, Laborers (The area that is south of N63 latitude and west of W138 longitude)
 *See per diem note on last page

S2201	Group I, including:	35.20	8.95	20.66	1.30	L&M	LEG	66.51
--------------	----------------------------	-------	------	-------	------	-----	-----	-------

- Nipper
- Storm Water Pollution Protection Plan Worker (SWPPP Worker - erosion and sediment control Laborer)
- Topman & Bull Gang
- Tunnel Track Laborer

S2202	Group II, including:	36.30	8.95	20.66	1.30	L&M	LEG	67.61
--------------	-----------------------------	-------	------	-------	------	-----	-----	-------

- Burning & Cutting Torch
- Certified Erosion Sediment Control Lead (CESCL Laborer)
- Concrete Laborer
- Floor Preparation, Core Drilling
- Jackhammer/Chipping Gun or Pavement Breaker
- Laser Instrument Operator
- Nozzlemen, Pumpcrete or Shotcrete
- Pipelayer Helper

S2203	Group III, including:	37.29	8.95	20.66	1.30	L&M	LEG	68.60
--------------	------------------------------	-------	------	-------	------	-----	-----	-------

- Miner
- Retimberman

S2204	Group IIIA, including:	40.90	8.95	20.66	1.30	L&M	LEG	72.21
--------------	-------------------------------	-------	------	-------	------	-----	-----	-------

- Asphalt Raker, Asphalt Belly Dump Lay Down
- Drill Doctor (in the field)
- Driller (including, but not limited to wagon drills, air-track drills, hydraulic drills)
- Pioneer Drilling & Drilling Off Tugger (all type drills)
- Pipelayer
- Powderman (Employee Possessor)
- Storm Water Pollution Protection Plan Specialist (SWPPP Specialist)
- Traffic Control Supervisor, DOT Qualified

S2206	Group IIIB, including:	45.07	6.24	20.66	1.30	L&M	LEG	73.67
--------------	-------------------------------	-------	------	-------	------	-----	-----	-------

- Driller (including, but not limited to wagon drills, air-track drills, hydraulic drills)(over 5,000 hours)
- Federal Powderman (Responsible Person in Charge)
- Grade Checking (setting or transferring of grade marks, line and grade, GPS, drones)
- Pioneer Drilling & Drilling Off Tugger (all type drills)(over 5,000 hours)

Wage benefits key: BHR=basic hourly rate, H&W=health and welfare, IAF=industry advancement fund, LEG=legal fund, L&M=labor/management fund, PEN=pension fund, SAF=safety, SUI=supplemental unemployment insurance, S&L=SUI & LEG combined, TRN=training, THR=total hourly rate, VAC=vacation