

**ADDENDUM NO. 4**  
**TO THE BID DOCUMENTS**  
**Homer Harbor Cathodic Float Protection**  
**CITY OF HOMER, ALASKA**

**Addendum Issue Date:** 9/23/2022

**Bid Submittal Date:** 9/28/2022

**Previous Addenda Issued:** 3

**Issued By:** Janette Keiser, PE  
Public Works Director  
City of Homer

---

**Notice to Bidders:**

Bidders must **acknowledge receipt of this Addendum** by including the Addenda Acknowledgement Form with the bid.

Bidders are required to acknowledge each addenda separately on the Addenda Acknowledgement Form. Any bids received without acknowledgment of addenda may be rejected prior to evaluation.

---

The Bid Documents for the above project are amended as follows (all other terms and conditions remain unchanged):

- 1. A new Plan set is attached with a revised scope of work. The total number of anodes has been reduced to 565, including the 5 additional anodes.**
- 2. A new Instructions to Bidders is attached to reflect the reduction in number of Anodes.**
- 3. A new Bid Form is attached to reflect the reduction in the number of anodes.**
- 4. A new Special Provisions is attached to reflect the reduction in the number of anodes.**
- 5. Pamphlet 600 Issue 45 from the Alaska Department of Labor is attached. This details new State prevailing wages which contractors will be required to adhere to.**



**INSTRUCTIONS TO BIDDERS**  
**City of Homer, Alaska**  
**Harbor Float Cathodic Protection Project**

The City of Homer, Alaska is requesting bids from qualified firms and individuals for the project described herein.

The following subjects are discussed herein to assist you in the preparation of your bid.

- I. Introduction
- II. Scope of Services
- III. General Bidding Requirements
- IV. The Bid Package
- V. Tentative Project Schedule
- VI. Instructions to Bidders
- VII. Labor Rates
- VIII. Equal Opportunity Employment Certification
- IX. Escalation Clause

**I. Introduction**

The City of Homer requests bids for the Harbor Float Cathodic Protection Project. The purpose of this project is to replace the sacrificial anodes on the floats in the Homer Harbor.

All work activity associated with the project shall be completed by May 31, 2022.

**II. Scope of Services**

The proposed work is located within the limits of the City of Homer and is illustrated on the plans entitled Homer Boat Harbor Cathodic Protection.

The project consists of furnishing all labor, materials, equipment, tools, supervision and other facilities necessary for the performance of the work described herein and shown on the project drawings. The work includes, but is not limited to furnishing and installing a total of 560 150 lb, furnishing 5 additional 150 lb anodes for stockpiling and completing a half cell survey and report letter.

**III. General Bidding Requirements**

The work must be performed by a Contractor skilled and regularly engaged in the type of work called for under the Contract. Bidders must have a current contractor's license issued by the State of Alaska. The license must apply to the work described in the Invitation. The City's local bidder preference requirements apply to this contract. State prevailing wage rates will apply.

An electronic copy of Plans and Specifications is available on the City's website <http://www.cityofhomer.ak.gov/rfps> or you may purchase hard copies at the Office of the City Clerk upon payment of \$100 per set (\$150 for overnight delivery). City of Homer Standard Construction Specifications 2011 Edition (containing general contract provisions) may also be downloaded from the city's website. All fees are non-refundable. The City of Homer reserves the right to accept or reject any or all bids, to waive irregularities or informalities in the bids, and to award the contract to the lowest responsive, responsible bidder.

**Performance and Payment bonds** in the amount of 100 percent (100%) of the bid amount are required.

Bids must be submitted on the Bid Form and be received by **2:00 PM on September 28, 2022** at the Office of the City Clerk, City of Homer 491 E. Pioneer Avenue, Homer, Alaska, 99603. **A bid bond is required.** Cashier checks in an amount equal to five percent (5%) of the bid are acceptable. Surety bonds are acceptable.

**A Pre-Bid Meeting will be held at 2:00 p.m. on Wednesday, September 14, 2022** at the Cowles Council Chamber, City Hall 491 E Pioneer Ave Homer, Alaska 99603. This meeting will be conducted simultaneously via Zoom. Invitations will be distributed to all bidders listed on the Plan Holder's List maintained by the City Clerk's Office.

A Site Visit will be conducted immediately following the meeting.

#### **IV. The Bid Package**

**The City of Homer requires a two-part Bid Package, Part A and Part B. Each portion of the Bid Package must be submitted in separate envelopes, which shall be combined into one single Bid Package, marked with the name of the project and the time/date of the bid opening.**

**At the bid opening, Part A is opened first and must be complete or Part B will not be opened and the bid will be rejected.**

**Part A** of the bid contains:

- a. Addenda Acknowledgment Form
- b. If signature on the Bid is by an agent, other than an Officer of a Corporation, or of a member of a Co-partnership, a Power of Attorney must be submitted in Part B.
- c. EEO-1 Certification
- d. EEO Clause

Part B of the bid contains.

**Part B** of the bid contains:

- a. Bid Form
- b. Bid Bond
- c. Escrow Bid Documentation

Both parts of the bid **must** be submitted with the bid package in separate envelopes marked "Part A" and "Part B".

## **V. Tentative Project Schedule**

- |                             |                                 |
|-----------------------------|---------------------------------|
| • Pre-bid Conference        | 2:00 p.m. on September 14, 2022 |
| • Bids Due                  | 2:00 p.m. on September 28, 2022 |
| • Notice of Intent to Award | September 30, 2022              |
| • Award by City Council     | October 10, 2022                |
| • Notice to Proceed         | October 11, 2022                |
| • Pre-Construction Meeting  | October 17, 2022                |
| • Start Construction        | October 24, 2022                |
| • Contract Completion       | May 31, 2023                    |

## **VI. Instructions to Bidders**

The City of Homer intends to award the contract to the lowest responsive, responsible bidder but reserves the right to accept or reject any or all proposals, to waive irregularities or informalities in the bids or bid process, and to award the contract to the bidder that best meets the criteria stated below.

### **A. Qualification of Bidders**

It is the intention of the City of Homer to award this contract to the Bidder who furnishes satisfactory evidence they have the requisite experience, ability and sufficient capital, facilities and plant to prosecute the work successfully (and properly) and to complete it within the time allowed in the Contract at the least cost to the City of Homer for dollars spent for value received. Bidders will be required to fill out a questionnaire attesting to their qualifications.

### **B. Taxes**

Attention is directed to the requirements of the General Conditions regarding the payment of taxes. All taxes that are lawfully assessed against Owner or Contractor in connection with the work shall be paid by the Contractor. The Bid prices shall include all such taxes.

The City of Homer is exempt from local sales taxes. The Contractor shall not include sales tax markup in his bid. However, in order to recoup sales tax the Contractor might pay at local vendors, the Contractor must secure a Tax Exempt card from the Kenai Peninsula Borough Tax Department.

### **C. Familiarization with the Work**

Before submitting its Bid, each prospective Bidder shall familiarize itself with the work, labor conditions and all laws, regulations and other factors affecting performance of the work. Bidders shall carefully correlate their observations with the requirements of the Contract Documents and otherwise satisfy themselves of the expense and difficulties attending performance of the work. The submission of a Bid shall constitute an acknowledgement that the Bidder has thoroughly examined and is familiar with the Contract Documents and the provisions thereof. The failure or neglect of a Bidder to receive or examine any of the Bid Documents shall in no way relieve the bidder from any obligations with the respect to their Bid or to the Contract.

Misinterpretation or a reputed lack of knowledge concerning the Bid will not serve as a basis for a claim for additional compensation.

Each Bidder shall visit the site of the work and completely inform themselves relative to construction hazards and procedures, the availability of lands, the character and quantity of surface and subsurface materials and utilities to be encountered, the arrangement and conditions of existing structures and facilities, the procedure necessary for maintenance of uninterrupted operations of existing facilities, the character of construction equipment and facilities needed for performance of the work, and facilities for transportation, handling and storage of materials and equipment. All such factors shall be properly investigated and considered in the preparation of the Bid.

#### **D. Interpretation of Bid Documents**

All questions about the meaning or intent of the Contract Documents shall be submitted to the Office of the Director of Public Works in writing. Replies will be issued by Addenda and delivered to all parties recorded by the City Clerk's Office as having received the Bidding documents. **The City of Homer will not be held responsible for questions received less than (5) calendar days prior to the date of opening of Bids.** Only questions answered by formal written Addenda will be binding. Oral and other interpretations or clarifications will be without legal effect.

**The Bidder shall acknowledge receipt of all Addenda on the Addendum Form, which shall be properly signed by the Bidder and placed in Part A.**

It shall be the Bidder's responsibility to inquire as to addenda issued. **Failure to include the Addenda Form in Part A of the Bid Package shall result in the Bid being rejected as non-responsive.**

#### **E. Bid Bond**

Each Bid shall be accompanied by a Bid Bond duly completed on the suggested form provided by a guaranty company authorized to conduct business in the State of Alaska, along with a General Power of Attorney form, if applicable, for payment to the City in the sum of five percent (5%) of the total amount of the Bid. **Failure to include the Bid Bond in Part A of the Bid Package shall result in the Bid being rejected as non-responsive.**

The amount payable to the City under the Bid Bond or the certified or cashier's check, as the case may be, shall be forfeited to the City in case of a failure or neglect of the Bidder to furnish, execute, and deliver to the City required Performance and Payment Bonds, Evidences of Insurance, necessary forms or material required by the Bid or failure to enter into, execute and deliver to the City the Contract on the form provided therefor, **within ten (10) working days after receipt of "Notice of Intent to Award Contract"** by the City that the Contract is ready for execution. The "Award of Contract" will be made upon the execution of the Contract by the Bidder and the City.

#### **F. Return of Bid Guarantee**

Within thirty (30) days after the Bids are opened, the City will return the Bid Guarantees accompanying the Bids, which are not to be considered in making the award. The bid Guarantees of the three (3) lowest

responsive Bids will be held until the Contract has been fully executed after which time the Guarantees will be returned to the respective Bidders whose Bids the Guarantees accompanied.

#### **G. Contract Time**

The Contract Time is an essential part of the Contract and it will be necessary for each Bidder to satisfy the City of his ability to complete the work within the time set forth in the Bid form. Provisions for delays, liquidated damages, and extensions of time are set forth in the Standard Construction Specifications. Time is of the essence in this contract.

#### **H. Preparation of Bids**

Bids must be submitted on the forms provided by the City and completed in all respects as required by the Bid Documents. Bids shall include all information requested herein, and be manually signed by the Bidder or the Bidder's duly authorized representative, with the Bidder's address and phone number. If the signature is by an agent, other than an Officer of a Corporation, or a member of a Co-partnership, a Power of Attorney must be submitted in Part A of the Bid; otherwise, the Bid will be rejected as non-responsive. **All Bids must be regular in every respect, and no alterations shall be made to the Bid form.**

If erasures or changes appear on the forms, each must be initialed by the person signing the Bid. No oral, telegraphic, electronic or telephone proposals will be considered.

Bid Packages, containing separate envelopes for Part A and Part B of the bid, will be received at the City Clerk's Office located at City Hall 491 East Pioneer Avenue, Homer, Alaska 99603, until the time indicated on the Invitation to Bid. Each Bid shall be submitted enclosed in a sealed, opaque envelope. **The envelope shall have the Bid title and date of Bid opening on the lower left-hand corner of the Bid Package.** The City is not responsible for the premature opening of, or failure to open, a bid not properly addressed and identified.

No consideration will be given by the City to a claim or error unless such claim is made to the City in writing within two (2) hours after the time of Bid opening. Written verification and supporting evidence of the error shall be delivered to the City Clerk within 24 hours of the Bid Opening (not including Saturday, Sunday or legal holidays) to allow consideration of the claim for error. Supporting evidence shall be original documents, including cost breakdown sheets, supplier quotes and other documents used to compute the Bid.

It is the bidder's responsibility to see that Bid Packages are deposited at the time and place set forth for the public opening of Bids. Bids not received by the time will not be considered responsive and shall not be considered.

### **VII. Labor Rates**

#### **A. State Labor Rates.**

This project is covered by the State of Alaska Title 36 Laborer's and Mechanic's Minimum Rate of Pay (AS 36.05.010 & 36.05.050) Pamphlet No. 600, Issue 45, Effective ~~April 1, 2021~~ **SEPTEMBER 1, 2022**. It

is the responsibility of the bidder to determine the current rates of pay required and to submit the proper certified payrolls to the State Department of Labor

#### **VIII. Equal Opportunity Employment**

Bidders must submit forms related to Equal Employment Opportunity with their bids, including:

- EEO-1 Certification
- EEO Clause

#### **IX. Escalation Clause**

The Contractor may request a cost adjustment for the anodes if the actual, documented difference between the total costs for all anodes on bid date and the total costs for all anodes on the date of purchase is more than 5% of the documented costs on bid date. The cost adjustment will be based on the documented difference in material costs only and shall not be subject to any markups, shipping or other incidental charge.

The Contractor shall use its best efforts to minimize material cost increases by employing industry – standard procurement strategies.

The Contractor shall submit, with its bid, information documenting the total cost of all anodes it intends to use on the project. **This cost information shall be placed in a separate envelope, sealed and marked *ESCROW BID DOCUMENTATION – ANODES* and submitted with PART B of the Bid Package.** This information will only be opened if the Contractor requests a cost adjustment for the anodes and will serve as documentation of the total cost of all anodes on the date of purchase.

No request for cost adjustment will be allowed if the **ESCROW BID DOCUMENTATION – ANODES** is not included with the bid or does not sufficiently document the total cost of all anodes.



**BID FORM****Homer Harbor Float Cathodic Protection**

ITEM NO.	SPEC NO.	Plan Detail	BID ITEM DESCRIPTION	UNIT	QTY	UNIT BID PRICE	TOTAL BID PRICE
1	101	NA	Mobilization/Demobilization	LS	1		
2	711A	1	Furnish and Install 150 lb Anodes (12 ¾" float pilings)	EA	236		
3	711A	1	Furnish and Install 150 lb Anodes (16" float pilings)	EA	248		
4	711A	2	Furnish and Install 150 lb Anodes (20" float pilings)	EA	36		
5	711A	3	Furnish and Install 150 lb Anodes (12 ¾" trestle pilings)	EA	3		
6	711A	3	Furnish and Install 150 lb Anodes (16" trestle pilings)	EA	11		
7	711A	4	Furnish and Install 150 lb Anodes (24" trestle pilings)	EA	26		
8	711A	NA	Furnish additional Anodes	EA	5		
9	711B	NA	Half Cell Survey Report Letter	LS	1		

**Grand Total All Bid Items: \$**\_\_\_\_\_

Name of Bidding Company\_\_\_\_\_

Address of Bidding Company\_\_\_\_\_

Signature of Company Representative \_\_\_\_\_ Date \_\_\_\_\_

Printed Name of Company Representative\_\_\_\_\_

Phone#/Email\_\_\_\_\_



## **SPECIAL PROVISIONS**

### **Homer Harbor Float Cathodic Protection**

The construction contract for this project will be administered in accordance with the General Provisions of the City's Standard Construction Specifications (2011).

### **MODIFICATIONS TO GENERAL PROVISIONS**

#### **SP - 1: Section 10.02 - Add New Article 2.6 – Equal Employment Opportunity**

Contractor shall be in compliance with Executive Order 11246 of September 24, 1965, entitled "Equal Employment Opportunity", as amended by Executive Order 11375 of October 13, 1967, and as supplemented in U.S. Department of Labor regulations (41 CFR Chapter 60).

#### **SP - 2: Section 10.04 – Add New Article 4.6 – Scope of Work**

The Work included under this Contract consists of furnishing all labor, materials, equipment, supervision, and other facilities necessary to successfully complete the Work set forth in the drawings, specifications, and the terms of the Contract, including, but not limited to the following work:

- Furnish and install a total of 560 150lb anodes
- Furnish 5 additional anodes for stockpiling
- Half cell survey and letter report

#### **SP - 3: Section 10.05- Modify Article 5.28 – Limitations of Operations**

Add the following language:

"Work on this project shall only occur between the dates of October 1 and May 31."

#### **SP - 4: Section 10.05 – Add New Article 5.38 – Coordination of Work with Ongoing Activities**

Contractor shall coordinate with the Harbormaster to minimize conflict with adjacent harbor users and head walk/float pedestrian traffic. The Contractor shall be responsible for limiting access to the actual job site, including if necessary the installation of barricades and caution tape/danger tape along the perimeter of the work area and around any material storage areas if necessary.

The City will conduct a weekly project coordination meeting with the Contractor during the duration of the project to be held at the Homer Harbormasters Office conference room.

Any damage to the existing City property during the course of construction caused by the Contractor or their Sub-Contractors will be repaired/replaced by the Contractor to the acceptance of the Engineer before final payment will be made on this Contract.

**SP – 5: Section 10.06 – Modify Article 6.1 – Laws to be Observed**

Add the following language:

“Contractor shall be in compliance with all applicable standards, orders, or requirements issued under section 306 of the Clean Air Act (42 U.S.C. 1857(h)), section 508 of the Clean Water Act (33 U.S.C. 1368), Executive Order 11738, and Environmental Protection Agency regulations (40 CFR part 15).”

**SP – 6: Section 10.06 – Modify Article 6.5 – Industrial Safety**

Add the following language:

“The City requires that the Contractor and all Sub-Contractors provide a well-developed Activity Hazard Analysis for all definable features of work on this project a minimum of 72 hours before the work is to take place. All plans will be reviewed and approved by the City before the Contractor will be allowed to proceed with the work. The Contractor will hold a jobsite safety meeting at a minimum of once a month during the course of construction. The Contractor will be responsible for the Sub-Contractors’ safe work practices at all times during the duration of this project. The City will maintain and enforce the most current issue of O.S.H.A standards.”

**SP – 7: Section 10.06 – Modify Article 6.18 – Insurance**

Add the following language:

“The Contractor shall provide the following types of insurance prior to starting work (see General Conditions - Article 6.18 – Insurance). All Insurance Certificates shall name “City of Home, Alaska” and “The State of Alaska” as an additionally insured party. Contractor will also include a provision that the “Department of Transportation and Public Facilities” along with the “State of Alaska” not be liable for damages or claims from damages arising from any contractor’s performance or activities in connection with work authorized by the projects Grant Agreement.”

Replace existing language in subsection “**b. The Contractor shall provide the following types of insurance:**” with:

<b>“1. <u>Worker’s Compensation</u></b>	<b><u>Minimum Limits</u></b>
Employer’s Liability and Workers’ Compensation	Statutory
as required by Alaska State Workers’ Compensation statutes.	(no less than \$100K per occurrence)

U.S. Longshoremen & Harbor Workers' (USL&H).

2. <u>Comprehensive General Liability</u>	<u>Minimum Limits</u>
Single Limit	\$1,000,000
Aggregate	\$2,000,000
<ul style="list-style-type: none"><li>• Bodily Injury &amp; Property Damage Liability</li><li>• Premises Operations</li><li>• Blanket Contractual</li><li>• Broad Form Property Damage</li><li>• Personal Injury</li><li>• Independent Contractors</li></ul>	
3. <u>Comprehensive Automobile Liability</u>	<u>Minimum Limits</u>
Bodily Injury and Property Damage, including all owned, hired and non-owned vehicles.”	\$1,000,000

**SP – 8: Section 10.07 – Modify Article 7.6 – Progress Payments**

Remove the following language:

“Until such time as the work is accepted by the City, retainage shall be withheld in accordance with the following schedule:

<b>Contract Completion Percentage</b>	<b>Retainage Percentage</b>
<b>0-75%</b>	<b>10%</b>
<b>76-95%</b>	<b>5%*</b>
<b>Over 95%</b>	<b>5%*</b>

\*May be reduced to these percentages depending upon satisfactory performance and adherence to the Contractor's progress schedule, clean-up, Contract completion cost and other factor, in the judgement of the Engineer.”

And replace with:

“Until such time as the work is accepted by the City, 10% of the final payment application shall be withheld as retainage.”

**SP – 9: Section 10.07 – Add New Article 7.13 – Materials Cost Adjustment – Anodes**

The Contractor may request a cost adjustment for the anodes if the actual, documented difference between the total costs for all anodes on bid date and the total costs for all anodes on the date of purchase is more than 5% of the documented costs on bid date. The cost

adjustment will be based on the documented difference in material costs only and shall not be subject to any markups, shipping or other incidental charge.

The Contractor shall use its best efforts to minimize material cost increases by employing industry – standard procurement strategies.

No cost adjustment will be allowed for any other material or item of work.

#### **SP – 9: Section 10.07 – Add New Article 7.14 – Escrow Bid Documentation – Anodes**

The Contractor shall submit, with its bid, information documenting the total cost of all anodes it intends to use on the project. **This cost information shall be placed in a separate envelope, sealed and marked *ESCROW BID DOCUMENTATION – ANODES* and submitted with PART B of the Bid Package.** The Escrow Bid Documentation shall be created by the bidder and formatted as the bidder wishes, but **must include:**

1. A description of the materials purchased
2. The vendor(s) the materials were purchased from
3. A name, phone number and email address for an appropriate contact with each vendor.
4. The quantity of materials purchased from each vendor
5. The unit price for each material
6. The total price of all materials purchased
7. Attach any quotes, invoices or receipts documenting the purchase of the materials.

This information will only be opened if the Contractor requests a cost adjustment for the anodes and will serve as documentation of the total cost of all anodes on the date of purchase.

No request for cost adjustment will be allowed if the **ESCROW BID DOCUMENTATION – ANODES** is not included with the bid or does not sufficiently document the total cost of all anodes.

## **MODIFICATIONS TO STANDARD SPECIFICATIONS**

#### **SP – 11: Add New Section 711 – Sacrificial Anodes**

##### **711.1 General**

This specification covers the work necessary to furnish and install a complete, operating, sacrificial anode cathodic protection system on pipe piles and steel grid framing as shown on

the plans and as specified herein. Sacrificial anodes will be welded to the piling by Association of Diving Contractors International (ADCI) certified commercial divers.

References:

- A. The publications listed below form a part of this specification to the extent referenced, current edition. The publications are referred to in the text by basic designation only:

ASTM INTERNATIONAL (ASTM)

ASTM B418            Cast and Wrought Galvanic Zinc Anodes

AMERICAN WELDING SOCIETY (AWS)

AWS-D3.6M            Class B Welding Standards

AWS D1.1/D1.1M      Structural Welding Code—Steel

NACE INTERNATIONAL (NACE)

NACE RP0387          Metallurgical and Inspection Requirements for Cast Galvanic Anodes for Offshore Applications

SSPC SP-10            Near White Metal Blast Cleaning (for anode fabrication)

ASSOCIATION OF DIVING CONTRACTORS INTERNATIONAL (ADCI)  
Commercial Diving Consensus Standards

Submittals:

- A. Schedule and work plan.
- B. Manufacturer Certificate of Conformity. Proof that the materials furnished under this section conform to the specified requirements contained in the NACE RP0387. The label or listing by the specified agency will be acceptable evidence of such compliance.
- C. Metallurgical analysis on samples from each heat or batch of anodes used on this project. The Contractor shall also submit a manufactures data sheet outlining the current output, consumption rate, and open circuit potential of the anodes.
- D. Certificates of insurance including US harbor and Longshoreman's Act Coverage.
- E. Diver certifications including Association of Diving Contractors International ADCI commercial diving certification.
- F. Welder certifications including wet welding to AWS D3.6-2017 class B standards and AWS D1.1 for the position and procedure performed.
- G. Half-cell survey before and after construction and letter report prepared by a certified NACE level II cathodic protection technician or higher.
- H. Video of underwater inspection of the completed installation. Video shall be submitted on a CD or other approved electronic media.
- I. As built drawings documenting the location of all anodes installed.

General Requirements:

- A. Sacrificial aluminum anodes shall be welded to all float piling and to the identified outboard piling on the approach trestles.
- B. All welding shall be done by welders certified for the level of work to be performed.
- C. Prior to commencing construction the contractor shall conduct a cathodic protection half-cell survey of the project site. This survey shall be completed by someone with a NACE level II cathodic protection technician or higher certification. Readings shall be taken at each main or headwalk float and at intervals 200 feet or less.
- D. After the anodes are installed the contractor shall video the completed installation. This shall be done for each anode.
- E. Following completion of construction allow at least 2 weeks for system polarization. The contractor shall then conduct another cathodic protection half-cell survey of the project site at locations close to the initial survey. The results of the pre and post survey shall be reported in a letter to the owner.

Diver Qualifications:

Anodes welded to the float piling shall be installed by divers. Diving operations shall meet the requirements as outlined in the Association of Diving Contractors international (ADCI) Consensus Standards. Divers and support personnel must be certified by this organization for the level of work to be performed.

**711.2 Materials**

Aluminum Anodes:

- A. Anodes shall have the minimum weights and maximum length dimensions as shown on the plans. Anodes shall be cast from aluminum alloy having a current capacity of not less than 1150 Amp hr/lb and a consumption rate of not more than 7.6 lb/amp-year. The open circuit potential with reference to a silver-silver chloride electrode shall be between -1.05 volts.
- B. The anodes shall conform to the following standards:
  - a. ASTM B418 Cast and Wrought Galvanic Zinc Anodes.
  - b. NACE RP0387 Metallurgical and Inspection Requirements for Cast Galvanic Anodes for Offshore Applications.
- C. Anodes shall be Galvalume 3 or equal and shall have the following material composition:

Element	Percent by Weight
Zinc	2.8 - 6.5%
Silicon	0.08 – 0.2%
Iron	0.12% (max)
Cadmium	0.002% (max)



Mercury	0.001% (max)
Tin	0.001% (max)
Indium	0.014 - 0.020%
Copper	0.006% (max)
Aluminum	Balance

- D. The core shall be 2-inch x 3/8-inch thick mild steel bar stock. It shall be placed longitudinally and extend from each end of the anode as shown in detail 5 of the plans. The core shall be free of surface oxides such as rust or other coatings. The steel core shall be abrasive blasted to near white finish in accordance with SSPC SP-10 and cast with the anode material within four hours of blasting. Holes, 3/4-inches in diameter, shall be drilled in the core on 4-inch centers in the area where it is contained in the anode.
- E. The anodes shall be supplied in the weights shown on the plans. The listed weights shall be the weight of the anode material not including the core.
- F. The Contractor shall submit metallurgical analysis on samples from each heat or batch of anodes used on this project. The Contractor shall also submit a manufactures data sheet outlining the current output, consumption rate, and open circuit potential of the anodes.

### **711.3 Construction**

#### **Anode Storage:**

- A. Anodes shall be stored in such a manner to protect anodes from inclement weather either in a building or if not anodes shall be covered by tarps or similar protection.

#### **Anode Installation:**

- A. Unless otherwise authorized, installation shall not proceed without the presence of the Owner's Representative. Anodes of the size specified shall be installed to the depth indicated and at the locations shown. Locations may be changed to clear obstructions with the approval of the Owner's Representative.
- B. Install float pile anodes near the mudline and ensure that they do not interfere with the pile collars as the floats move through the full tide cycle.
- C. Grind localized area of pile coating prior to installation to ensure metallic contact between anode and pile. Bend anode tabs and install aluminum anodes by diver, as indicated on the contract drawings.
- D. Welding Methods. For coated piling, remove a small area of coating prior to welding. For aluminum anodes installed above the low tide line, weld according to AWS D1.1/D1.1M. For aluminum anodes to be installed below the low tide line, wet weld to AWS-D3.6 Class B standards using a diver.

#### **711.4 Method of Measurement**

- A. Payment for furnishing and installing aluminum anodes will be made at the contract unit price per each acceptable aluminum anode actually furnished and installed, complete and in place including all weldments, diving, and other items required to completely install the cathodic protection systems as indicated herein.
- B. Payment for half-cell survey and letter report shall include to the pre and post construction surveys and the letter report and is incidental to the above furnish and install anode bid item.

#### **711.5 Basis of Payment**

The quantities, determined as provided above, shall be paid for each of the particular pay items listed below that is shown in the Bid Schedule. Payment shall be made on the following basis:

<b><u>Item</u></b>	<b><u>Description</u></b>	<b><u>Pay Unit</u></b>
711A	Furnish and Install 150-lb Aluminum Anode	EA

<b><u>Item</u></b>	<b><u>Description</u></b>	<b><u>Pay Unit</u></b>
711B	Half Cell Survey and Letter Report	LS





# MINIMUM RATES OF PAY For Laborers and Mechanics

Effective September 1, 2022

Issue 45

**PAMPHLET No. 600**

Title 36. Public Contracts  
AS 36.05

**DEPARTMENT OF LABOR  
AND WORKFORCE DEVELOPMENT**

Wage and Hour



- This page intentionally left blank -



THE STATE  
of **ALASKA**  
GOVERNOR MIKE DUNLEAVY

## Department of Labor and Workforce Development

Office of the Commissioner

Post Office Box 111149  
Juneau, Alaska 99811  
Main: 907.465.2700  
fax: 907.465-2784

September 1, 2022

### TO ALL CONTRACTING AGENCIES:

At the Alaska Department of Labor and Workforce Development our goal is putting Alaskans to work. This pamphlet is designed to help contractors awarded public construction contracts understand the most significant laws of the State of Alaska pertaining to prevailing wage.

This pamphlet identifies current prevailing wage rates for public construction contracts (any construction projects awarded for the State of Alaska or its political subdivisions, such as local governments and certain non-profit organizations). Because these rates may change in a subsequent determination, please be sure you are using the appropriate rates. The rates published in this edition become effective September 1, 2022.

The prevailing wage rates contained in this pamphlet are applicable to public construction projects with a final bid date of September 11, 2022, or later. As the law now provides, these rates will remain stable during the life of a contract or for 24 calendar months, whichever is shorter. **The 24-month period begins on the date the prime contract is awarded.** Upon expiration of the initial 24-month period, the latest wage rates issued by the department shall become effective for a subsequent 24-month period or until the original contract is completed, whichever occurs first. This process shall be repeated until the original contract is completed.

The term "original contract" means the signed contract that resulted from the original bid and any amendments, including changes of work scope, additions, extensions, change orders, and other instruments agreed to by the parties that have not been subject to subsequent open bid procedures.

If a higher federal rate is required due to partial federal funding or other federal participation, the higher rate must be paid.

For additional copies of this pamphlet go to: <http://labor.state.ak.us/lss/pamp600.htm>

For questions regarding prevailing wage or employment preference requirements, please contact the nearest Wage and Hour office. These offices are listed on Page x.

Sincerely,

A handwritten signature in black ink, reading "Tamika L. Ledbetter".

Dr. Tamika L. Ledbetter  
Commissioner

- This page intentionally left blank -

# Table of Contents

## Excerpts from Alaska Law

Sec. 36.05.005. Applicability.....	iv
Sec. 36.05.010. Wage rates on public construction. ....	iv
Sec. 36.05.040. Filing schedule of employees, wages paid and other information .....	iv
Sec. 36.05.045. Notice of work and completion; withholding of payment .....	iv
Sec. 36.05.060. Penalty for violation of this chapter .....	v
Sec. 36.05.070. Wage rates in specifications and contracts for public works .....	v
Sec. 36.05.080. Failure to pay agreed wages .....	v
Sec. 36.05.090. Payment of wages from withheld payments and listing contractors who violate contracts .....	v
Sec. 36.05.900. Definition.. ..	vi

## Excerpts from Alaska Administrative Code

8 AAC 30.051. Purpose .....	vi
8 AAC 30.052. Board and lodging; remote sites .....	vi
8 AAC 30.054. Per diem instead of board and lodging .....	vi
8 AAC 30.056. Alternative arrangement.....	vii
8 AAC 30.900. General definitions (selected excerpts).....	vii

## Additional Information

Per Diem .....	vii
Laborer Classification Clarification.....	viii
Apprentice Rates.....	viii
Fringe Benefit Plans.....	viii
Special Prevailing Wage Rate Determination.....	ix
Alaska Employment Preference Information.....	ix
Labor Standards and Safety Notice Requests .....	x
Debarment List .....	x

<b>Wage Rates .....</b>	<b>Pages 1-26</b>
-------------------------	-------------------

<b>Shipyard Rate Addendum.....</b>	<b>Pages 28</b>
------------------------------------	-----------------

**Note to Readers: The statutes and administrative regulations listed in this publication were taken from the official codes, as of the effective date of the publication. However, there may be errors or omissions that have not been identified and changes that occurred after the publication was printed.** This publication is intended as an informational guide only and is not intended to serve as a precise statement of the statutes and regulations of the State of Alaska. To be certain of current laws and regulations, please refer to the official codes.

## EXCERPTS FROM ALASKA LAW

### **Sec. 36.05.005. Applicability.**

This chapter applies only to a public construction contract that exceeds \$25,000.

### **Sec. 36.05.010. Wage rates on public construction.**

A contractor or subcontractor who performs work on a public construction contract in the state shall pay not less than the current prevailing rate of wages for work of a similar nature in the region in which the work is done. The current prevailing rate of wages is that contained in the latest determination of prevailing rate of wages issued by the Department of Labor and Workforce Development at least 10 days before the final date for submission of bids for the contract. The rate shall remain in effect for the life of the contract or for 24 calendar months, whichever is shorter. At the end of the initial 24-month period, if new wage determinations have been issued by the department, the latest wage determination shall become effective for the next 24-month period or until the contract is completed, whichever occurs first. This process shall be repeated until the contract is completed.

### **Sec. 36.05.040. Filing schedule of employees, wages paid, and other information.**

All contractors or subcontractors who perform work on a public construction contract for the state or for a political subdivision of the state shall, before the Friday of every second week, file with the Department of Labor and Workforce Development a sworn affidavit for the previous reporting period, setting out in detail the number of persons employed, wages paid, job classification of each employee, hours worked each day and week, and other information on a form provided by the Department of Labor and Workforce Development.

### **Sec. 36.05.045. Notice of work and completion; withholding of payment.**

- (a) Before commencing work on a public construction contract, the person entering into the contract with a contracting agency shall designate a primary contractor for purposes of this section. Before work commences, the primary contractor shall file a notice of work with the Department of Labor and Workforce Development. The notice of work must list work to be performed under the public construction contract by each contractor who will perform any portion of work on the contract and the contract price being paid to each contractor. The primary contractor shall pay all filing fees for each contractor performing work on the contract, including a filing fee based on the contract price being paid for work performed by the primary contractor's employees. The filing fee payable shall be the sum of all fees calculated for each contractor. The filing fee shall be one percent of each contractor's contract price. The total filing fee payable by the primary contractor under this subsection may not exceed \$5,000. In this subsection, "contractor" means an employer who is using employees to perform work on the public construction contract under the contract or a subcontract.
- (b) Upon completion of all work on the public construction contract, the primary contractor shall file with the Department of Labor and Workforce Development a notice of completion together with payment of any additional filing fees owed due to increased contract amounts. Within 30 days after the department's receipt of the primary contractor's notice of completion, the department shall inform the contracting agency of the amount, if any, to be withheld from the final payment.
- (c) A contracting agency
  - (1) may release final payment of a public construction contract to the extent that the agency has received verification from the Department of Labor and Workforce Development that
    - (A) the primary contractor has complied with (a) and (b) of this section;
    - (B) the Department of Labor and Workforce Development is not conducting an investigation under this title; and
    - (C) the Department of Labor and Workforce Development has not issued a notice of a violation of this chapter to the primary contractor or any other contractors working on the public construction contract; and



- (2) shall withhold from the final payment an amount sufficient to pay the department's estimate of what may be needed to compensate the employees of any contractors under investigation on this construction contract, and any unpaid filing fees.
- (d) The notice and filing fee required under (a) of this section may be filed after work has begun if
  - (1) The public construction contract is for work undertaken in immediate response to an emergency; and
  - (2) The notice and fees are filed not later than 14 days after the work has begun.
- (e) A false statement made on a notice required by this section is punishable under AS 11.56.210.

**Sec. 36.05.060. Penalty for violation of this chapter.**

A contractor who violates this chapter is guilty of a misdemeanor and upon conviction is punishable by a fine of not less than \$100 nor more than \$1,000, or by imprisonment for not less than 10 days nor more than 90 days, or by both. Each day a violation exists constitutes a separate offense.

**Sec. 36.05.070. Wage rates in specifications and contracts for public works.**

- (a) The advertised specifications for a public construction contract that requires or involves the employment of mechanics, laborers, or field surveyors must contain a provision stating the minimum wages to be paid various classes of laborers, mechanics, or field surveyors and that the rate of wages shall be adjusted to the wage rate under AS 36.05.010.
- (b) Repealed by §17 ch 142 SLA 1972.
- (c) A public construction contract under (a) of this section must contain provisions that
  - (1) the contractor or subcontractors of the contractor shall pay all employees unconditionally and not less than once a week;
  - (2) wages may not be less than those stated in the advertised specifications, regardless of the contractual relationship between the contractor or subcontractors and laborers, mechanics, or field surveyors;
  - (3) the scale of wages to be paid shall be posted by the contractor in a prominent and easily accessible place at the site of the work;
  - (4) the state or a political subdivision shall withhold so much of the accrued payments as is necessary to pay to laborers, mechanics, or field surveyors employed by the contractor or subcontractors the difference between
    - (A) the rates of wages required by the contract to be paid laborers, mechanics, or field surveyors on the work; and
    - (B) the rates of wages in fact received by laborers, mechanics, or field surveyors.

**Sec. 36.05.080. Failure to pay agreed wages.**

Every contract within the scope of AS 36.05.070 shall contain a provision that if it is found that a laborer, mechanic, or field surveyor employed by the contractor or subcontractor has been or is being paid a rate of wages less than the rate of wages required by the contract to be paid, the state or its political subdivision may, by written notice to the contractor, terminate the contractor's right to proceed with the work or the part of the work for which there is a failure to pay the required wages and to prosecute the work to completion by contract or otherwise, and the contractor and the contractor's sureties are liable to the state or its political subdivision for excess costs for completing the work.

**Sec. 36.05.090. Payment of wages from withheld payments and listing contractors who violate contracts.**

- (a) The state disbursing officer in the case of a state public construction contract and the local fiscal officer in the case of a political subdivision public construction contract shall pay directly to laborers, mechanics, or field surveyors from accrued payments withheld under the terms of the contract the wages due laborers, mechanics, or field surveyors under AS 36.05.070.
- (b) The state disbursing officer or the local fiscal officer shall distribute to all departments of the state government and to all political subdivisions of the state a list giving the names of persons who have disregarded their obligations to employees. A person appearing on this list and a firm, corporation, partnership, or association in which the person has an interest may not work as a contractor or

subcontractor on a public construction contract for the state or a political subdivision of the state until three years after the date of publication of the list. If the accrued payments withheld under the contract are insufficient to reimburse all the laborers, mechanics, or field surveyors with respect to whom there has been a failure to pay the wages required under AS 36.05.070, the laborers, mechanics, or field surveyors have the right of action or intervention or both against the contractor and the contractor's sureties conferred by law upon persons furnishing labor or materials, and in the proceedings it is not a defense that the laborers, mechanics, or field surveyors accepted or agreed to accept less than the required rate of wages or voluntarily made refunds.

**Sec. 36.05.900. Definition.**

In this chapter, "contracting agency" means the state or a political subdivision of the state that has entered into a public construction contract with a contractor.

**EXCERPTS FROM ALASKA ADMINISTRATIVE CODE**

\*\*\***Notice:** Regulations relating to board and lodging and per diem went into effect on November 25, 2018. The new regulations are excerpted here\*\*\*

**8 AAC 30.051. Purpose.** The purpose of 8 AAC 30.052 – 8 AAC 30.056 is to ensure that wages paid to laborers, mechanics, and field surveyors do not fall below the prevailing rate of pay.

**8 AAC 30.052. Board and lodging; remote sites.** (a) A contractor on a public construction project located 65 or more road miles from the international airport closest to the project area in either Fairbanks, Juneau, or Anchorage, or that is inaccessible by road in a two-wheel drive vehicle, shall provide adequate board and lodging to each laborer, mechanic, or field surveyor while the person is employed on the project. If commercial lodging facilities are not available, the contractor shall provide temporary lodging facilities. Lodging facilities must comply with all applicable state and federal laws. For a highway project, the location of the project is measured from the midpoint of the project.

(b) A contractor is not required to provide board and lodging:

(1) to a laborer, mechanic, or field surveyor who is a domiciled resident of the project area; or

(2) on a laborer, mechanic, or field surveyor's scheduled days off, when the person can reasonably travel between the project and the person's permanent residence; for the purposes of this paragraph, "scheduled day off" means a day in which a person does not perform work on-site, is not required to remain at or near the job location for the benefit of the contractor, and is informed of the day off at least seven days before the day off.

(c) Upon a contractor's written request, the commissioner may waive the requirements of (a) of this section where:

(1) the project is inaccessible by road in a two-wheel drive vehicle, but the laborer, mechanic, or field surveyor can reasonably travel between the project and the person's permanent residence within one hour; or

(2) a laborer, mechanic, or field surveyor is not a domiciled resident of the project area, but has established permanent residence, with the intent to remain indefinitely, within 65 road miles of the project, or for a highway project, the mid-point of the project.

**8 AAC 30.054. Per diem instead of board and lodging.** (a) A contractor may pay a laborer, mechanic, or field surveyor per diem instead of providing board and lodging, when the following conditions are met:

(1) the department determines that per diem instead of board and lodging is an established practice for the work classification; the department shall publish and periodically revise its determinations in the pamphlet *Laborers and Mechanics Minimum Rates of Pay*;

(2) the contractor pays each laborer, mechanic, or field surveyor the appropriate per diem rate as published and periodically revised in the pamphlet *Laborers and Mechanics Minimum Rates of Pay*; and

(3) the contractor pays the per diem to each laborer, mechanic, or field surveyor on the same day that wages are paid.

(b) A contractor may not pay per diem instead of board and lodging on a highway project located

- (1) west of Livengood on the Elliot Highway, AK-2;
- (2) on the Dalton Highway, AK-11;
- (3) north of milepost 20 on the Taylor Highway, AK-5;
- (4) east of Chicken on the Top of the World Highway; or
- (5) south of Tetlin Junction to the Alaska-Canada border on the Alaska Highway, AK-2.

**8 AAC 30.056. Alternative arrangement.** Upon a contractor's written request, the commissioner may approve an alternative board and lodging or per diem arrangement, provided

- (1) the arrangement does not reduce the laborer, mechanic, or field surveyor's wages below the prevailing wage rate; and
- (2) the laborer, mechanic, or field surveyor voluntarily enters into and signs the written arrangement; a labor organization representing laborers, mechanics, or field surveyors may enter into the written agreement on their behalf.

**8 AAC 30.900. General definitions** (selected excerpts only):

In this chapter and in AS 36

(22) "domiciled resident" means a person living within 65 road miles of a public construction project, or in the case of a highway project, the mid-point of the project, for at least 12 consecutive months prior to the award of the public construction project;

(23) "employed on the project" means the time period from the date the laborer, mechanic, or field surveyor first reports on-site to the project through the final date the person reports on-site to the project.

## **ADDITIONAL INFORMATION**

### **PER DIEM**

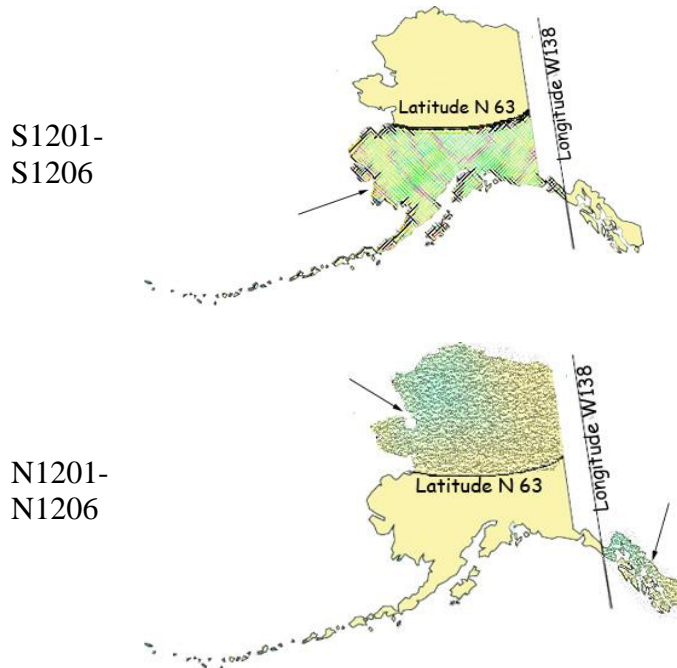
**Notice:** New regulations relating to board and lodging and per diem went into effect on November 25, 2018. The regulations provide a comprehensive set of requirements for the provision of board and lodging or per diem for workers on remote projects. Please refer to Alaska Administrative Code 8 AAC Chapter 30 and read the chapter carefully.

The Alaska Department of Labor and Workforce Development has determined that per diem is an established work practice for certain work classifications. These classifications are indicated throughout the Pamphlet by an asterisk (\*) under the classification title. If all of the conditions of 8 AAC 30.054 are met, an employer may pay workers in these classifications per diem instead of providing board and lodging on a remote project.

**Per Diem Rate:** As of May 1<sup>st</sup>, 2019, the minimum per diem rate is \$100.00 per day, or part thereof, the worker is employed on the project. In the event that a contractor provides lodging facilities, but no meals, the department will accept a payment of \$48 per day for meals to meet the per diem requirements.

### **LABORER CLASSIFICATION CLARIFICATION**

The laborer rates categorized in class code S1201-S1206 apply in one area of Alaska; the area that is south of N63 latitude and west of W138 Longitude. The laborer rates categorized in class code N1201-N1206 apply in two areas of Alaska; the Alaska areas north of N63 latitude and east of W138 longitude. The following graphic representations should assist with clarifying the applicable wage rate categories:



### **APPRENTICE RATES**

Apprentice rates at less than the minimum prevailing rates may be paid to apprentices according to an apprentice program which has been registered and approved by the Commissioner of the Alaska Department of Labor and Workforce Development in writing or according to a bona fide apprenticeship program registered with the U.S. Department of Labor, Office of Apprenticeship Training. **Any employee listed on a payroll at an apprentice wage rate who is not registered as above shall be paid the journeyman prevailing minimum wage in that work classification.** Wage rates are based on prevailing crew makeup practices in Alaska and apply to work performed regardless of either the quality of the work performed by the employee or the titles or classifications which may be assigned to individual employees.

### **FRINGE BENEFIT PLANS**

Contractors/subcontractors may compensate fringe benefits to their employees in any one of three methods. The fringe benefits may be paid into a union trust fund, into an approved benefit plan, or paid directly on the paycheck as gross wages.

Where fringe benefits are paid into approved plans, funds, or programs including union trust funds, the payments must be contributed at least monthly. If contractors submit their own payroll forms and are paying fringe benefits into approved plans, funds, or programs, the employer's certification must include, in addition to those requirements of 8 AAC 30.020(c), a statement that fringe benefit payments have been or will be paid at least monthly. Contractors who pay fringe benefits to a plan must ensure the plan is one approved by the Internal Revenue Service and that the plan meets the requirements of 8 AAC 30.025 (eff. 3/2/08) in order for payments to be credited toward the prevailing wage obligation.

### **SPECIAL PREVAILING WAGE RATE DETERMINATION**

Special prevailing wage rate determinations may be requested for special projects or a special worker classification if the work to be performed does not conform to traditional public construction for which a prevailing wage rate has been established under 8 AAC 30.050(a) of this section. Requests for special wage rate determinations must be in writing and filed with the Commissioner at least 30 days before the award of the contract. An applicant for a special wage rate determination shall have the responsibility to support the necessity for the special rate. An application for a special wage rate determination filed under this section must contain:

- (1) a specification of the contract or project on which the special rates will apply and a description of the work to be performed;
- (2) a brief narrative explaining why special wage rates are necessary;
- (3) the job class or classes involved;
- (4) the special wage rates the applicant is requesting, including survey or other relevant wage data to support the requested rates;
- (5) the approximate number of employees who would be affected; and
- (6) any other information which might be helpful in determining if special wage rates are appropriate.

Requests made pursuant to the above should be addressed to:

Director  
Alaska Department of Labor and Workforce Development  
Labor Standards and Safety Division  
Wage and Hour  
P.O. Box 111149  
Juneau, AK 99811-1149  
-or-  
Email: [statewide.wagehour@alaska.gov](mailto:statewide.wagehour@alaska.gov)

### **EMPLOYMENT PREFERENCE INFORMATION**

In October 2019, the Alaska Attorney General issued a formal opinion stating that the Alaska Statutes 36.10.150 of the State's 90% Employment Preference law, also known as the Alaska Resident Hire law, violates both the U.S. and Alaska Constitutions. As a result, the state has stopped all enforcement activity.

A copy of the Attorney General opinion is found here:

[http://law.alaska.gov/pdf/opinions/opinions\\_2019/19-005\\_AK-hire.pdf](http://law.alaska.gov/pdf/opinions/opinions_2019/19-005_AK-hire.pdf)

**Alaska Department of Labor and Workforce Development**  
**Labor Standards and Safety Division**  
**Wage and Hour**  
Web site: <http://labor.state.ak.us/lss/pamp600.htm>

**Anchorage**

1251 Muldoon Road, Suite 113  
Anchorage, Alaska 99504-2098  
Phone: (907) 269-4900

Email:  
statewide.wagehour@alaska.gov

**Juneau**

PO Box 111149  
Juneau, Alaska 99811  
Phone: (907) 465-4842

Email:  
statewide.wagehour@alaska.gov

**Fairbanks**

Regional State Office Building  
675 7<sup>th</sup> Ave., Station J-1  
Fairbanks, Alaska 99701-4593  
Phone: (907) 451-2886

Email:  
statewide.wagehour@alaska.gov

**LABOR STANDARDS AND SAFETY NOTICE REQUESTS**

If you would like to receive Wage and Hour or Mechanical Inspection **regulation notices** or **publications information**, they are available via electronic mail, by signing up in the GovDelivery System, <https://public.govdelivery.com/accounts/AKDOL/subscriber/new> and selecting topics *LSS – Wage and Hour – Forms and Publications*, *LSS – Mechanical Inspection Regulations*, or *LSS – Wage and Hour Regulations*.

*Publications* are also available online at <http://labor.alaska.gov/lss/home.htm>

**DEBARMENT LIST**

**AS 36.05.090(b)** states that “the state disbursing officer or the local fiscal officer shall distribute to all departments of the state government and to all political subdivisions of the state a list giving the names of persons who have disregarded their obligations to employees.”

A person appearing on the following debarment list and a firm, corporation, partnership, or association in which the person has an interest may not work as a contractor or subcontractor on a public construction contract for the state or a political subdivision of the state for three years from the date of debarment.

Company Name

Debarment Expires

No companies are currently debarred.

# Laborers' & Mechanics' Minimum Rates of Pay

Class Code	Classification of Laborers & Mechanics	BHR	H&W	PEN	TRN	Other	Benefits	THR
------------	--	-----	-----	-----	-----	-------	----------	-----

## Boilermakers

\*See per diem note on last page

<b>A0101</b>	Boilermaker (journeyman)	46.97	8.57	18.08	1.90	<b>VAC</b>	<b>SAF</b>	
						4.25	0.34	80.11

## Bricklayers & Blocklayers

\*See per diem note on last page

<b>A0201</b>	Blocklayer	42.01	9.00	10.20	0.62	<b>L&amp;M</b>		
						0.20		62.03

Bricklayer  
Marble or Stone Mason  
Refractory Worker (Firebrick, Plastic, Castable, and Gunit Refractory Applications)  
Terrazzo Worker  
Tile Setter

<b>A0202</b>	Tuck Pointer Caulker	42.01	9.00	10.20	0.62	<b>L&amp;M</b>		
						0.20		62.03

Cleaner (PCC)

<b>A0203</b>	Marble & Tile Finisher	35.84	9.00	10.20	0.62	<b>L&amp;M</b>		
						0.20		55.86

Terrazzo Finisher

<b>A0204</b>	Torginal Applicator	35.84	9.00	10.20	0.62	<b>L&amp;M</b>		
						0.20		55.86

## Carpenters, Region I (North of 63 latitude)

\*See per diem note on last page

<b>N0301</b>	Carpenter (journeyman)	43.34	10.35	15.82	1.75	<b>L&amp;M</b>	<b>SAF</b>	
						0.20	0.20	71.66

Lather/Drywall/Acoustical

## Carpenters, Region II (South of N63 latitude)

\*See per diem note on last page

<b>S0301</b>	Carpenter (journeyman)	43.34	10.35	16.36	1.75	<b>L&amp;M</b>	<b>SAF</b>	
						0.20	0.20	72.20

Lather/Drywall/Acoustical

## Cement Masons

\*See per diem note on last page

Wage benefits key: BHR=basic hourly rate; H&W=health and welfare; IAF=industry advancement fund; LEG=legal fund; L&M=labor/management fund; PEN=pension fund; SAF=safety; SUI=supplemental unemployment insurance; S&L=SUI & LEG combined; TRN=training; THR=total hourly rate; VAC=vacation

Class Code	Classification of Laborers & Mechanics	BHR	H&W	PEN	TRN	Other Benefits	THR
------------	--	-----	-----	-----	-----	----------------	-----

## Cement Masons

\*See per diem note on last page

						L&M	
<b>A0401</b>	Group I, including:	40.13	8.70	11.80	1.43	0.10	62.16
	Application of Sealing Compound						
	Application of Underlayment						
	Building, General						
	Cement Finisher						
	Cement Mason (journeyman)						
	Concrete						
	Concrete Paving						
	Concrete Polishing						
	Concrete Repair						
	Curb & Gutter, Sidewalk						
	Curing of All Concrete						
	General Concrete Pour Tender						
	Grouting & Caulking of Tilt-Up Panels						
	Grouting of All Plates						
	Patching Concrete						
	Screed Pin Setter						
	Screeder or Rodder						
	Spackling/Skim Coating						
<b>A0402</b>	Group II, including:	40.13	8.70	11.80	1.43	0.10	62.16
	Form Setter						
<b>A0403</b>	Group III, including:	40.13	8.70	11.80	1.43	0.10	62.16
	Concrete Saw Cutter Operator (All Control Joints and Self-powered)						
	Curb & Gutter Machine						
	Floor Grinder						
	Pneumatic Power Tools						
	Power Chipping & Bushing						
	Sand Blasting Architectural Finish						
	Screed & Rodding Machine Operator						
	Troweling Machine Operator (all concrete surfaces)						
<b>A0404</b>	Group IV, including:	40.13	8.70	11.80	1.43	0.10	62.16
	Acoustical or Imitation Acoustical Finish						
	Application of All Composition Mastic						
	Application of All Epoxy Material						
	Application of All Plastic Material						
	Finish Colored Concrete						
	Gunite Nozzleman						
	Hand Powered Grinder						

Wage benefits key: BHR=basic hourly rate; H&W=health and welfare; IAF=industry advancement fund; LEG=legal fund; L&M=labor/management fund; PEN=pension fund; SAF=safety; SUI=supplemental unemployment insurance; S&L=SUI & LEG combined; TRN=training; THR=total hourly rate; VAC=vacation



Class Code	Classification of Laborers & Mechanics	BHR	H&W	PEN	TRN	Other Benefits	THR
------------	--	-----	-----	-----	-----	----------------	-----

### Cement Masons

\*See per diem note on last page

<b>A0404</b>	Group IV, including:	40.13	8.70	11.80	1.43	<b>L&amp;M</b> 0.10	62.16
--------------	----------------------	-------	------	-------	------	------------------------	-------

Preparing, scratching and browsing of all ceilings and walls, finished with terrazo or tile  
Tunnel Worker

<b>A0405</b>	Group V, including:	40.13	8.70	11.80	1.43	<b>L&amp;M</b> 0.10	62.16
--------------	---------------------	-------	------	-------	------	------------------------	-------

Casting and finishing  
EIFS Systems  
Finishing of all interior and exterior plastering  
Fireproofing (Pryocrete, Cafco, Albi-Clad, sprayed fiberglass)  
Gypsum, Portland Cement  
Kindred material and products  
Operation and control of all types of plastering machines, including power tools and floats, used by the industry  
Overcoating and maintenance of interior/exterior plaster surfaces  
Plasterer  
Veneer plastering process (Rapid Plaster, U.S.G. "Imperial Systems", and Pabcoat Systems")  
Venetian plaster and color-integrated Italian/Middle-Eastern line plaster

### Culinary Workers

<b>A0501</b>	Baker/Cook	29.12	7.31	8.68		<b>LEG</b>	45.11
--------------	------------	-------	------	------	--	------------	-------

<b>A0503</b>	General Helper	25.82	7.31	8.68		<b>LEG</b>	41.81
--------------	----------------	-------	------	------	--	------------	-------

Housekeeper  
Janitor  
Kitchen Helper

<b>A0504</b>	Head Cook	29.72	7.31	8.68		<b>LEG</b>	45.71
--------------	-----------	-------	------	------	--	------------	-------

<b>A0505</b>	Head Housekeeper	26.20	7.31	8.68		<b>LEG</b>	42.19
--------------	------------------	-------	------	------	--	------------	-------

Head Kitchen Help

### Dredgemen

\*See per diem note on last page

<b>A0601</b>	Assistant Engineer	42.76	11.05	13.75	1.00	<b>L&amp;M</b> 0.10 0.05	68.71
--------------	--------------------	-------	-------	-------	------	-----------------------------	-------

Craneman

Wage benefits key: BHR=basic hourly rate; H&W=health and welfare; IAF=industry advancement fund; LEG=legal fund; L&M=labor/management fund; PEN=pension fund; SAF=safety; SUI=supplemental unemployment insurance; S&L=SUI & LEG combined; TRN=training; THR=total hourly rate; VAC=vacation

Class Code	Classification of Laborers & Mechanics	BHR	H&W	PEN	TRN	Other	Benefits	THR
<b>Dredgemen</b>								
*See per diem note on last page								
						<b>L&amp;M</b>		
A0601	Assistant Engineer	42.76	11.05	13.75	1.00	0.10	0.05	68.71
	Electrical Generator Operator (primary pump/power barge/dredge)							
	Engineer							
	Welder							
						<b>L&amp;M</b>		
A0602	Assistant Mate (deckhand)	41.60	11.05	13.75	1.00	0.10	0.05	67.55
						<b>L&amp;M</b>		
A0603	Fireman	42.04	11.05	13.75	1.00	0.10	0.05	67.99
						<b>L&amp;M</b>		
A0605	Leverman Clamshell	45.29	11.05	13.75	1.00	0.10	0.05	71.24
						<b>L&amp;M</b>		
A0606	Leverman Hydraulic	43.53	11.05	13.75	1.00	0.10	0.05	69.48
						<b>L&amp;M</b>		
A0607	Mate & Boatman	42.76	11.05	13.75	1.00	0.10	0.05	68.71
						<b>L&amp;M</b>		
A0608	Oiler (dredge)	42.04	11.05	13.75	1.00	0.10	0.05	67.99
<b>Electricians</b>								
*See per diem note on last page								
						<b>L&amp;M</b>	<b>LEG</b>	
A0701	Inside Cable Splicer	42.77	14.23	13.92	0.95	0.20	0.15	72.22
						<b>L&amp;M</b>	<b>LEG</b>	
A0702	Inside Journeyman Wireman, including:	42.44	14.23	14.16	0.95	0.20	0.15	72.13
	Technicians (including use of drones in electrical construction)							
						<b>L&amp;M</b>	<b>LEG</b>	
A0703	Power Cable Splicer	63.04	14.23	19.08	0.95	0.25	0.15	97.70
						<b>L&amp;M</b>	<b>LEG</b>	
A0704	Tele Com Cable Splicer	50.53	14.23	17.17	0.95	0.20	0.15	83.23
						<b>L&amp;M</b>	<b>LEG</b>	
A0705	Power Journeyman Lineman, including:	61.29	14.23	19.03	0.95	0.25	0.15	95.90
	Power Equipment Operator							
	Technician (including use of drones in electrical construction)							
						<b>L&amp;M</b>	<b>LEG</b>	
A0706	Tele Com Journeyman Lineman, including:	48.78	14.23	17.11	0.95	0.20	0.15	81.42
	Technician (including use of drones in telecommunications construction)							
	Tele Com Equipment Operator							

Wage benefits key: BHR=basic hourly rate; H&W=health and welfare; IAF=industry advancement fund; LEG=legal fund; L&M=labor/management fund; PEN=pension fund; SAF=safety; SUI=supplemental unemployment insurance; S&L=SUI & LEG combined; TRN=training; THR=total hourly rate; VAC=vacation

Class Code	Classification of Laborers & Mechanics	BHR	H&W	PEN	TRN	Other Benefits	THR
<b>Electricians</b>							
*See per diem note on last page							
<b>A0707</b>	Straight Line Installer - Repairman	48.78	14.23	17.11	0.95	<b>L&amp;M</b> 0.20 <b>LEG</b> 0.15	81.42
<b>A0708</b>	Powderman	59.29	14.23	18.97	0.95	<b>L&amp;M</b> 0.25 <b>LEG</b> 0.15	93.84
<b>A0710</b>	Material Handler	26.57	13.92	5.80	0.15	<b>L&amp;M</b> 0.15 <b>LEG</b> 0.15	46.74
<b>A0712</b>	Tree Trimmer Groundman	29.12	14.23	13.35	0.15	<b>L&amp;M</b> 0.15 <b>LEG</b> 0.15	57.15
<b>A0713</b>	Journeyman Tree Trimmer	38.05	14.23	13.62	0.15	<b>L&amp;M</b> 0.15 <b>LEG</b> 0.15	66.35
<b>A0714</b>	Vegetation Control Sprayer	41.60	14.23	13.73	0.15	<b>L&amp;M</b> 0.15 <b>LEG</b> 0.15	70.01
<b>A0715</b>	Inside Journeyman Communications CO/PBX	41.02	14.23	13.87	0.95	<b>L&amp;M</b> 0.20 <b>LEG</b> 0.15	70.42
<b>Elevator Workers</b>							
*See per diem note on last page							
<b>A0802</b>	Elevator Constructor	44.21	16.02	20.21	0.65	<b>L&amp;M</b> 0.60 <b>VAC</b> 4.90	86.59
<b>A0803</b>	Elevator Constructor Mechanic	63.16	16.02	20.21	0.65	<b>L&amp;M</b> 0.60 <b>VAC</b> 7.01	107.65
<b>Heat &amp; Frost Insulators/Asbestos Workers</b>							
*See per diem note on last page							
<b>A0902</b>	Asbestos Abatement-Mechanical Systems	40.32	9.24	11.12	1.20	<b>IAF</b> 0.14 <b>LML</b> 0.05	62.07
<b>A0903</b>	Asbestos Abatement/General Demolition All Systems	40.32	9.24	11.12	1.20	<b>IAF</b> 0.14 <b>LML</b> 0.05	62.07
<b>A0904</b>	Insulator, Group II	40.32	9.24	11.12	1.20	<b>IAF</b> 0.14 <b>LML</b> 0.05	62.07
<b>A0905</b>	Fire Stop	40.32	9.24	11.12	1.20	<b>IAF</b> 0.14 <b>LML</b> 0.05	62.07
<b>Ironworkers</b>							
*See per diem note on last page							
<b>A1101</b>	Ironworkers, including:	41.49	9.91	24.95	0.77	<b>L&amp;M</b> 0.20 <b>IAF</b> 0.24	77.56

Wage benefits key: BHR=basic hourly rate; H&W=health and welfare; IAF=industry advancement fund; LEG=legal fund; L&M=labor/management fund; PEN=pension fund; SAF=safety; SUI=supplemental unemployment insurance; S&L=SUI & LEG combined; TRN=training; THR=total hourly rate; VAC=vacation

Class Code	Classification of Laborers & Mechanics	BHR	H&W	PEN	TRN	Other	Benefits	THR
------------	--	-----	-----	-----	-----	-------	----------	-----

### IronWorkers

\*See per diem note on last page

						L&M	IAF	
<b>A1101</b>	Ironworkers, including:	41.49	9.91	24.95	0.77	0.20	0.24	77.56
	Bender Operators							
	Bridge & Structural							
	Hangar Doors							
	Hollow Metal Doors							
	Industrial Doors							
	Machinery Mover							
	Ornamental							
	Reinforcing							
	Rigger							
	Sheeter							
	Signalman							
	Stage Rigger							
	Toxic Haz-Mat Work							
	Welder							

						L&M	IAF	
<b>A1102</b>	Helicopter	42.49	9.91	24.95	0.77	0.20	0.24	78.56
	Helicopter (used for rigging and setting)							
	Tower (energy producing windmill type towers to include nacelle and blades)							

						L&M	IAF	
<b>A1103</b>	Fence/Barrier Installer	37.99	9.91	24.95	0.77	0.20	0.24	74.06

						L&M	IAF	
<b>A1104</b>	Guard Rail Layout Man	38.73	9.91	24.95	0.77	0.20	0.24	74.80

						L&M	IAF	
<b>A1105</b>	Guard Rail Installer	38.99	9.91	24.95	0.77	0.20	0.24	75.06

### Laborers (The Alaska areas north of N63 latitude and east of W138 longitude)

\*See per diem note on last page

						L&M	LEG	
<b>N1201</b>	Group I, including:	33.00	8.95	21.16	1.40	0.20	0.20	64.91
	Asphalt Worker (shovelman, plant crew)							
	Brush Cutter							
	Camp Maintenance Laborer							
	Carpenter Tender or Helper							
	Choke Setter, Hook Tender, Rigger, Signalman							
	Concrete Labor (curb & gutter, chute handler, curing, grouting, screeding)							
	Crusher Plant Laborer							
	Demolition Laborer							

Wage benefits key: BHR=basic hourly rate; H&W=health and welfare; IAF=industry advancement fund; LEG=legal fund; L&M=labor/management fund; PEN=pension fund; SAF=safety; SUI=supplemental unemployment insurance; S&L=SUI & LEG combined; TRN=training; THR=total hourly rate; VAC=vacation

**Laborers (The Alaska areas north of N63 latitude and east of W138 longitude)**

\*See per diem note on last page

							L&M	LEG	
<b>N1201</b>	Group I, including:	33.00	8.95	21.16	1.40	0.20	0.20	64.91	

Ditch Digger  
 Dumpman  
 Environmental Laborer (hazard/toxic waste, oil spill)  
 Fence Installer  
 Fire Watch Laborer  
 Flagman  
 Form Stripper  
 General Laborer  
 Guardrail Laborer, Bridge Rail Installer  
 Hydro-seeder Nozzleman  
 Laborer, Building  
 Landscaper or Planter  
 Laying of Mortarless Decorative Block (retaining walls, flowered decorative block 4 feet or less - highway or landscape work)  
 Material Handler  
 Pneumatic or Power Tools  
 Portable or Chemical Toilet Serviceman  
 Pump Man or Mixer Man  
 Railroad Track Laborer  
 Sandblast, Pot Tender  
 Saw Tender  
 Slurry Work  
 Steam Cleaner Operator  
 Steam Point or Water Jet Operator  
 Storm Water Pollution Protection Plan Worker (SWPPP Worker - erosion and sediment control Laborer)  
 Tank Cleaning  
 Utiliwalk & Utilidor Laborer  
 Watchman (construction projects)  
 Window Cleaner

							L&M	LEG	
<b>N1202</b>	Group II, including:	34.00	8.95	21.16	1.40	0.20	0.20	65.91	

Burning & Cutting Torch  
 Cement or Lime Dumper or Handler (sack or bulk)  
 Certified Erosion Sediment Control Lead (CESCL Laborer)  
 Choker Splicer  
 Chucktender (wagon, air-track & hydraulic drills)  
 Concrete Laborer (power buggy, concrete saws, pumpcrete nozzleman, vibratorman)  
 Culvert Pipe Laborer  
 Cured Inplace Pipelayer

Wage benefits key: BHR=basic hourly rate; H&W=health and welfare; IAF=industry advancement fund; LEG=legal fund; L&M=labor/management fund; PEN=pension fund; SAF=safety; SUI=supplemental unemployment insurance; S&L=SUI & LEG combined; TRN=training; THR=total hourly rate; VAC=vacation

Class Code	Classification of Laborers & Mechanics	BHR	H&W	PEN	TRN	Other	Benefits	THR
------------	--	-----	-----	-----	-----	-------	----------	-----

### Laborers (The Alaska areas north of N63 latitude and east of W138 longitude)

\*See per diem note on last page

						L&M	LEG	
<b>N1202</b>	Group II, including:	34.00	8.95	21.16	1.40	0.20	0.20	65.91

Environmental Laborer (asbestos, marine work)  
Floor Preparation, Core Drilling  
Foam Gun or Foam Machine Operator  
Green Cutter (dam work)  
Guniting Operator  
Hod Carrier  
Jackhammer/Chipping Gun or Pavement Breaker  
Laser Instrument Operator  
Laying of Mortarless Decorative Block (retaining walls, flowered decorative block over 4 feet - highway or landscape work)  
Mason Tender & Mud Mixer (sewer work)  
Pilot Car  
Pipelayer Helper  
Plasterer, Bricklayer & Cement Finisher Tender  
Powderman Helper  
Power Saw Operator  
Railroad Switch Layout Laborer  
Sandblaster  
Scaffold Building & Erecting  
Sewer Caulker  
Sewer Plant Maintenance Man  
Thermal Plastic Applicator  
Timber Faller, Chainsaw Operator, Filer  
Timberman

						L&M	LEG	
<b>N1203</b>	Group III, including:	34.90	8.95	21.16	1.40	0.20	0.20	66.81

Bit Grinder  
Camera/Tool/Video Operator  
Guardrail Machine Operator  
High Rigger & Tree Topper  
High Scaler  
Multiplate  
Plastic Welding  
Slurry Seal Squeegee Man  
Traffic Control Supervisor  
Welding Certified (in connection with laborer's work)

						L&M	LEG	
<b>N1204</b>	Group IIIA	38.18	8.95	21.16	1.40	0.20	0.20	70.09

Asphalt Raker, Asphalt Belly Dump Lay Down  
Drill Doctor (in the field)

Wage benefits key: BHR=basic hourly rate; H&W=health and welfare; IAF=industry advancement fund; LEG=legal fund; L&M=labor/management fund; PEN=pension fund; SAF=safety; SUI=supplemental unemployment insurance; S&L=SUI & LEG combined; TRN=training; THR=total hourly rate; VAC=vacation

Class Code	Classification of Laborers & Mechanics	BHR	H&W	PEN	TRN	Other	Benefits	THR
------------	--	-----	-----	-----	-----	-------	----------	-----

### Laborers (The Alaska areas north of N63 latitude and east of W138 longitude)

\*See per diem note on last page

						L&M	LEG	
<b>N1204</b>	Group IIIA	38.18	8.95	21.16	1.40	0.20	0.20	70.09

Driller (including, but not limited to wagon drills, air-track drills, hydraulic drills)  
Pioneer Drilling & Drilling Off Tugger (all type drills)  
Pipelayers  
Powderman (Employee Possessor)  
Storm Water Pollution Protection Plan Specialist (SWPPP Specialist)  
Traffic Control Supervisor, DOT Qualified

						L&M	LEG	
<b>N1205</b>	Group IV	22.57	8.95	21.16	1.40	0.20	0.20	54.48

Final Building Cleanup  
Permanent Yard Worker

						L&M	LEG	
<b>N1206</b>	Group IIIB	41.97	6.24	21.16	1.40	0.20	0.20	71.17

Driller (including, but not limited to wagon drills, air-track drills, hydraulic drills)(over 5,000 hours)  
Federal Powderman (Responsible Person in Charge)  
Grade Checking (setting or transferring of grade marks, line and grade, GPS, drones)  
Pioneer Drilling & Drilling Off Tugger (all type drills)(over 5,000 hours)  
Stake Hopper

### Laborers (The area that is south of N63 latitude and west of W138 longitude)

\*See per diem note on last page

						L&M	LEG	
<b>S1201</b>	Group I, including:	33.00	8.95	21.16	1.40	0.20	0.20	64.91

Asphalt Worker (shovelman, plant crew)  
Brush Cutter  
Camp Maintenance Laborer  
Carpenter Tender or Helper  
Choke Setter, Hook Tender, Rigger, Signalman  
Concrete Labor (curb & gutter, chute handler, curing, grouting, screeding)  
Crusher Plant Laborer  
Demolition Laborer  
Ditch Digger  
Dumpman  
Environmental Laborer (hazard/toxic waste, oil spill)  
Fence Installer  
Fire Watch Laborer  
Flagman

Wage benefits key: BHR=basic hourly rate; H&W=health and welfare; IAF=industry advancement fund; LEG=legal fund; L&M=labor/management fund; PEN=pension fund; SAF=safety; SUI=supplemental unemployment insurance; S&L=SUI & LEG combined; TRN=training; THR=total hourly rate; VAC=vacation

Class Code	Classification of Laborers & Mechanics	BHR	H&W	PEN	TRN	Other	Benefits	THR
------------	--	-----	-----	-----	-----	-------	----------	-----

**Laborers (The area that is south of N63 latitude and west of W138 longitude)**

\*See per diem note on last page

						L&M	LEG	
<b>S1201</b>	Group I, including:	33.00	8.95	21.16	1.40	0.20	0.20	64.91

Form Stripper  
General Laborer  
Guardrail Laborer, Bridge Rail Installer  
Hydro-seeder Nozzleman  
Laborer, Building  
Landscape or Planter  
Laying of Mortarless Decorative Block (retaining walls, flowered decorative block 4 feet or less - highway or landscape work)  
Material Handler  
Pneumatic or Power Tools  
Portable or Chemical Toilet Serviceman  
Pump Man or Mixer Man  
Railroad Track Laborer  
Sandblast, Pot Tender  
Saw Tender  
Slurry Work  
Steam Cleaner Operator  
Steam Point or Water Jet Operator  
Storm Water Pollution Protection Plan Worker (SWPPP Worker - erosion and sediment control Laborer)  
Tank Cleaning  
Utiliwalk & Utilidor Laborer  
Watchman (construction projects)  
Window Cleaner

						L&M	LEG	
<b>S1202</b>	Group II, including:	34.00	8.95	21.16	1.40	0.20	0.20	65.91

Burning & Cutting Torch  
Cement or Lime Dumper or Handler (sack or bulk)  
Certified Erosion Sediment Control Lead (CESCL Laborer)  
Choker Splicer  
Chucktender (wagon, air-track & hydraulic drills)  
Concrete Laborer (power buggy, concrete saws, pumpcrete nozzleman, vibratorman)  
Culvert Pipe Laborer  
Cured Inplace Pipelayer  
Environmental Laborer (asbestos, marine work)  
Floor Preparation, Core Drilling  
Foam Gun or Foam Machine Operator  
Green Cutter (dam work)  
Guniting Operator  
Hod Carrier

Wage benefits key: BHR=basic hourly rate; H&W=health and welfare; IAF=industry advancement fund; LEG=legal fund; L&M=labor/management fund; PEN=pension fund; SAF=safety; SUI=supplemental unemployment insurance; S&L=SUI & LEG combined; TRN=training; THR=total hourly rate; VAC=vacation



Class Code	Classification of Laborers & Mechanics	BHR	H&W	PEN	TRN	Other	Benefits	THR
------------	--	-----	-----	-----	-----	-------	----------	-----

**Laborers (The area that is south of N63 latitude and west of W138 longitude)**

\*See per diem note on last page

						L&M	LEG	
<b>S1202</b>	Group II, including:	34.00	8.95	21.16	1.40	0.20	0.20	65.91

Jackhammer/Chipping Gun or Pavement Breaker  
Laser Instrument Operator  
Laying of Mortarless Decorative Block (retaining walls, flowered decorative block over 4 feet - highway or landscape work)  
Mason Tender & Mud Mixer (sewer work)  
Pilot Car  
Pipelayer Helper  
Plasterer, Bricklayer & Cement Finisher Tender  
Powderman Helper  
Power Saw Operator  
Railroad Switch Layout Laborer  
Sandblaster  
Scaffold Building & Erecting  
Sewer Caulker  
Sewer Plant Maintenance Man  
Thermal Plastic Applicator  
Timber Faller, Chainsaw Operator, Filer  
Timberman

						L&M	LEG	
<b>S1203</b>	Group III, including:	34.90	8.95	21.16	1.40	0.20	0.20	66.81

Bit Grinder  
Camera/Tool/Video Operator  
Guardrail Machine Operator  
High Rigger & Tree Topper  
High Scaler  
Multiplate  
Plastic Welding  
Slurry Seal Squeegee Man  
Traffic Control Supervisor  
Welding Certified (in connection with laborer's work)

						L&M	LEG	
<b>S1204</b>	Group IIIA	38.18	8.95	21.16	1.40	0.20	0.20	70.09

Asphalt Raker, Asphalt Belly Dump Lay Down  
Drill Doctor (in the field)  
Driller (including, but not limited to wagon drills, air-track drills, hydraulic drills)  
Pioneer Drilling & Drilling Off Tugger (all type drills)  
Pipelayers  
Powderman (Employee Possessor)  
Storm Water Pollution Protection Plan Specialist (SWPPP Specialist)

Wage benefits key: BHR=basic hourly rate; H&W=health and welfare; IAF=industry advancement fund; LEG=legal fund; L&M=labor/management fund; PEN=pension fund; SAF=safety; SUI=supplemental unemployment insurance; S&L=SUI & LEG combined; TRN=training; THR=total hourly rate; VAC=vacation

Class Code	Classification of Laborers & Mechanics	BHR	H&W	PEN	TRN	Other	Benefits	THR
<b>Laborers (The area that is south of N63 latitude and west of W138 longitude)</b>								
*See per diem note on last page								
<b>S1204</b>	Group IIIA	38.18	8.95	21.16	1.40	<b>L&amp;M</b>	<b>LEG</b>	
	Traffic Control Supervisor, DOT Qualified					0.20	0.20	70.09
<b>S1205</b>	Group IV	22.57	8.95	21.16	1.40	<b>L&amp;M</b>	<b>LEG</b>	
	Final Building Cleanup					0.20	0.20	54.48
	Permanent Yard Worker							
<b>S1206</b>	Group IIIB	41.97	6.24	21.16	1.40	<b>L&amp;M</b>	<b>LEG</b>	
	Driller (including, but not limited to wagon drills, air-track drills, hydraulic drills)(over 5,000 hours)					0.20	0.20	71.17
	Federal Powderman (Responsible Person in Charge)							
	Grade Checking (setting or transferring of grade marks, line and grade, GPS, drones)							
	Pioneer Drilling & Drilling Off Tugger (all type drills)(over 5,000 hours)							
	Stake Hopper							
<b>Millwrights</b>								
*See per diem note on last page								
<b>A1251</b>	Millwright (journeyman)	46.48	10.35	12.87	1.10	<b>L&amp;M</b>		
						0.40	0.05	71.25
<b>A1252</b>	Millwright Welder	47.48	10.35	12.87	1.10	<b>L&amp;M</b>		
						0.40	0.05	72.25
<b>Painters, Region I (North of N63 latitude)</b>								
*See per diem note on last page								
<b>N1301</b>	Group I, including:	36.08	9.27	15.10	1.08	<b>L&amp;M</b>		
	Brush					0.07		61.60
	General Painter							
	Hand Taping							
	Hazardous Material Handler							
	Lead-Based Paint Abatement							
	Roll							
<b>N1302</b>	Group II, including:	36.60	9.27	15.10	1.08	<b>L&amp;M</b>		
	Bridge Painter					0.07		62.12
	Epoxy Applicator							
	General Drywall Finisher							
	Hand/Spray Texturing							
	Industrial Coatings Specialist							
Wage benefits key: BHR=basic hourly rate; H&W=health and welfare; IAF=industry advancement fund; LEG=legal fund; L&M=labor/management fund; PEN=pension fund; SAF=safety; SUI=supplemental unemployment insurance; S&L=SUI & LEG combined; TRN=training; THR=total hourly rate; VAC=vacation								

Class Code	Classification of Laborers & Mechanics	BHR	H&W	PEN	TRN	Other Benefits	THR
<b>Painters, Region I (North of N63 latitude)</b>							
*See per diem note on last page							
<b>N1302</b>	Group II, including:	36.60	9.27	15.10	1.08	<b>L&amp;M</b> 0.07	62.12
	Machine/Automatic Taping						
	Pot Tender						
	Sandblasting						
	Specialty Painter						
	Spray						
	Structural Steel Painter						
	Wallpaper/Vinyl Hanger						
<b>N1304</b>	Group IV, including:	40.74	9.27	18.21	1.05	0.05	69.32
	Glazier						
	Storefront/Automatic Door Mechanic						
<b>N1305</b>	Group V, including:	39.44	9.27	5.00	1.10	0.10	54.91
	Carpet Installer						
	Floor Coverer						
	Heat Weld/Cove Base						
	Linoleum/Soft Tile Installer						
<b>N1306</b>	Group VI, including:	50.44	10.23	5.00	1.10	0.10	66.87
	Traffic Control Striper						
<b>Painters, Region II (South of N63 latitude)</b>							
*See per diem note on last page							
<b>S1301</b>	Group I, including :	33.22	9.27	15.95	1.08	<b>L&amp;M</b> 0.07	59.59
	Brush						
	General Painter						
	Hand Taping						
	Hazardous Material Handler						
	Lead-Based Paint Abatement						
	Roll						
	Spray						
<b>S1302</b>	Group II, including :	34.47	9.27	15.95	1.08	<b>L&amp;M</b> 0.07	60.84
	General Drywall Finisher						
	Hand/Spray Texturing						
	Machine/Automatic Taping						
	Wallpaper/Vinyl Hanger						

Wage benefits key: BHR=basic hourly rate; H&W=health and welfare; IAF=industry advancement fund; LEG=legal fund; L&M=labor/management fund; PEN=pension fund; SAF=safety; SUI=supplemental unemployment insurance; S&L=SUI & LEG combined; TRN=training; THR=total hourly rate; VAC=vacation

Class Code	Classification of Laborers & Mechanics	BHR	H&W	PEN	TRN	Other	Benefits	THR
<b>Painters, Region II (South of N63 latitude)</b>								
*See per diem note on last page								
<b>S1303</b>	Group III, including :	34.57	9.27	15.95	1.08	<b>L&amp;M</b>		60.94
	Bridge Painter							
	Epoxy Applicator							
	Industrial Coatings Specialist							
	Pot Tender							
	Sandblasting							
	Specialty Painter							
	Structural Steel Painter							
<b>S1304</b>	Group IV, including:	40.95	9.27	17.25	1.08	<b>L&amp;M</b>		68.62
	Glazier							
	Storefront/Automatic Door Mechanic							
<b>S1305</b>	Group V, including:	39.44	9.27	5.00	1.10	<b>L&amp;M</b>		54.91
	Carpet Installer							
	Floor Coverer							
	Heat Weld/Cove Base							
	Linoleum/Soft Tile Installer							
<b>S1306</b>	Group VI, including:	50.44	10.23	5.00	1.10	<b>L&amp;M</b>		66.87
	Traffic Control Stripper							
<b>Piledrivers</b>								
*See per diem note on last page								
<b>A1401</b>	Piledriver	43.34	10.35	15.82	1.75	<b>L&amp;M</b>		71.66
	Assistant Dive Tender							
	Carpenter/Piledriver							
	Rigger							
	Sheet Stabber							
	Skiff Operator							
<b>A1402</b>	Piledriver-Welder/Toxic Worker	44.34	10.35	15.82	1.75	<b>L&amp;M</b>		72.66
<b>A1403</b>	Remotely Operated Vehicle Pilot/Technician	47.65	10.35	15.82	1.75	<b>L&amp;M</b>		75.97
	Single Atmosphere Suit, Bell or Submersible Pilot							
<b>A1404</b>	Diver (working) **See note on last page	87.45	10.35	15.82	1.75	<b>L&amp;M</b>		115.77

Wage benefits key: BHR=basic hourly rate; H&W=health and welfare; IAF=industry advancement fund; LEG=legal fund; L&M=labor/management fund; PEN=pension fund; SAF=safety; SUI=supplemental unemployment insurance; S&L=SUI & LEG combined; TRN=training; THR=total hourly rate; VAC=vacation

Class Code	Classification of Laborers & Mechanics	BHR	H&W	PEN	TRN	Other	Benefits	THR
<b>Piledrivers</b>								
*See per diem note on last page								
<b>A1405</b>	Diver (standby) **See note on last page	47.65	10.35	15.82	1.75	<b>L&amp;M</b> 0.20	<b>IAF</b> 0.20	75.97
<b>A1406</b>	Dive Tender **See note on last page	46.65	10.35	15.82	1.75	<b>L&amp;M</b> 0.20	<b>IAF</b> 0.20	74.97
<b>A1407</b>	Welder (American Welding Society, Certified Welding Inspector)	48.90	10.35	15.82	1.75	<b>L&amp;M</b> 0.20	<b>IAF</b> 0.20	77.22
<b>Plumbers, Region I (North of N63 latitude)</b>								
*See per diem note on last page								
<b>N1501</b>	Journeyman Pipefitter	45.41	11.75	17.45	1.50	<b>L&amp;M</b> 0.65	<b>S&amp;L</b>	76.76
	Plumber							
	Welder							
<b>Plumbers, Region II (South of N63 latitude)</b>								
*See per diem note on last page								
<b>S1501</b>	Journeyman Pipefitter	41.00	11.88	15.27	1.55	<b>L&amp;M</b> 0.20		69.90
	Plumber							
	Welder							
<b>Plumbers, Region IIA (1st Judicial District)</b>								
*See per diem note on last page								
<b>X1501</b>	Journeyman Pipefitter	41.32	13.37	11.75	2.50	<b>L&amp;M</b> 0.24		69.18
	Plumber							
	Welder							
<b>Power Equipment Operators</b>								
*See per diem note on last page								
<b>A1601</b>	Group I, including:	43.53	11.05	13.75	1.00	<b>L&amp;M</b> 0.10	0.05	69.48
	Asphalt Roller: Breakdown, Intermediate, and Finish							
	Back Filler							
	Barrier Machine (Zipper)							
	Belcrete with Power Pack & similar conveyors							
	Bending Machine							
	Boat Coxswain							
	Bulldozer							
	Cableways, Highlines & Cablecars							

Wage benefits key: BHR=basic hourly rate; H&W=health and welfare; IAF=industry advancement fund; LEG=legal fund; L&M=labor/management fund; PEN=pension fund; SAF=safety; SUI=supplemental unemployment insurance; S&L=SUI & LEG combined; TRN=training; THR=total hourly rate; VAC=vacation

## Power Equipment Operators

\*See per diem note on last page

							L&M		
<b>A1601</b>	Group I, including:	43.53	11.05	13.75	1.00	0.10	0.05	69.48	
	Cleaning Machine								
	Coating Machine								
	Concrete Hydro Blaster								
	Cranes (45 tons & under or 150 feet of boom & under (including jib & attachments))								
	(a) Hydralifts or Transporters, (all track or truck type)								
	(b) Derricks								
	(c) Overhead								
	Crushers								
	Deck Winches, Double Drum								
	Ditching or Trenching Machine (16 inch or over)								
	Drag Scraper, Yarder, and similar types								
	Drilling Machines, Core, Cable, Rotary and Exploration								
	Finishing Machine Operator, Concrete Paving, Laser Screed, Sidewalk, Curb & Gutter Machine								
	Grade Checker and/or Line and Grade including Drone								
	Helicopters								
	Hover Craft, Flex Craft, Loadmaster, Air Cushion, All-Terrain Vehicle, Rollagon, Bargecable, Nodwell, & Snow Cat								
	Hydro Ax, Feller Buncher & similar								
	Hydro Excavation (Vac-Truck and Similar)								
	Loaders (2 1/2 yards through 5 yards, including all attachments):								
	(a) Forklifts (with telescopic boom & swing attachment)								
	(b) Front End & Overhead, (2-1/2 yards through 5 yards)								
	(c) Loaders, (with forks or pipe clamp)								
	(d) Loaders, (elevating belt type, Euclid & similar types)								
	Material Transfer Vehicle (Elevating Grader, Pickup Machine, and similar types)								
	Mechanic, Welder, Bodyman, Electrical, Camp & Maintenance Engineer								
	Micro Tunneling Machine								
	Mixers: Mobile type with hoist combination								
	Motor Patrol Grader								
	Mucking Machine: Mole, Tunnel Drill, Horizontal/Directional Drill Operator and/or Shield								
	Off-Road Hauler (including Articulating and Haul Trucks)								
	Operator on Dredges								
	Piledriver Engineer, L.B. Foster, Puller or similar paving breaker								
	Plant Operator (Asphalt & Concrete)								
	Power Plant, Turbine Operator 200 k.w & over (power plants or combination of power units over 300 k.w.)								
	Remote Controlled Equipment								
	Scraper (through 40 yards)								

Wage benefits key: BHR=basic hourly rate; H&W=health and welfare; IAF=industry advancement fund; LEG=legal fund; L&M=labor/management fund; PEN=pension fund; SAF=safety; SUI=supplemental unemployment insurance; S&L=SUI & LEG combined; TRN=training; THR=total hourly rate; VAC=vacation

Class Code	Classification of Laborers & Mechanics	BHR	H&W	PEN	TRN	Other	Benefits	THR
------------	--	-----	-----	-----	-----	-------	----------	-----

## Power Equipment Operators

\*See per diem note on last page

						L&M		
<b>A1601</b>	Group I, including:	43.53	11.05	13.75	1.00	0.10	0.05	69.48

Service Oiler/Service Engineer  
Shot Blast Machine  
Shovels, Backhoes, Excavators with all attachments, and Gradealls (3 yards & under)  
Sideboom (under 45 tons)  
Sub Grader (Gurries & similar types)  
Tack Tractor  
Truck Mounted Concrete Pump, Conveyor/Tele-belt, & Creter  
Wate Kote Machine

						L&M		
<b>A1602</b>	Group IA, including:	45.29	11.05	13.75	1.00	0.10	0.05	71.24

Camera/Tool/Video Operator (Slipline)  
Certified Welder, Electrical Mechanic, Camp Maintenance Engineer, Mechanic (over 10,000 hours)  
Cranes (over 45 tons or 150 feet including jib & attachments)  
(a) Clamshells & Draglines (over 3 yards)  
(b) Tower Cranes  
Licensed Water/Waste Water Treatment Operator  
Loaders (over 5 yards)  
Motor Patrol Grader, Dozer, Grade Tractor (finish: when finishing to final grade and/or to hubs, or for asphalt)  
Power Plants (1000 k.w. & over)  
Profiler, Reclaimer, and Roto-Mill  
Quad  
Scrapers (over 40 yards)  
Screed  
Shovels, Backhoes, Excavators with all attachments (over 3 yards)  
Sidebooms (over 45 tons)  
Slip Form Paver, C.M.I. & similar types  
Topside (Asphalt Paver, Slurry machine, Spreaders, and similar types)

						L&M		
<b>A1603</b>	Group II, including:	42.76	11.05	13.75	1.00	0.10	0.05	68.71

Boiler - Fireman  
Cement Hogs & Concrete Pump Operator  
Conveyors (except those listed in Group I)  
Hoists on Steel Erection, Towermobiles & Air Tuggers  
Horizontal/Directional Drill Locator  
Locomotives, Rod & Geared Engines  
Mixers  
Screening, Washing Plant

Wage benefits key: BHR=basic hourly rate; H&W=health and welfare; IAF=industry advancement fund; LEG=legal fund; L&M=labor/management fund; PEN=pension fund; SAF=safety; SUI=supplemental unemployment insurance; S&L=SUI & LEG combined; TRN=training; THR=total hourly rate; VAC=vacation

Class Code	Classification of Laborers & Mechanics	BHR	H&W	PEN	TRN	Other	Benefits	THR
<b>Power Equipment Operators</b>								
*See per diem note on last page								
<b>A1603</b>	Group II, including:	42.76	11.05	13.75	1.00	0.10	0.05	68.71
	Sideboom (cradling rock drill, regardless of size)							
	Skidder							
	Trenching Machines (under 16 inches)							
	Water/Waste Water Treatment Operator							
<b>A1604</b>	Group III, including:	42.04	11.05	13.75	1.00	0.10	0.05	67.99
	"A" Frame Trucks, Deck Winches							
	Bombardier (tack or tow rig)							
	Boring Machine							
	Brooms, Power (sweeper, elevator, vacuum, or similar)							
	Bump Cutter							
	Compressor							
	Farm Tractor							
	Forklift, Industrial Type							
	Gin Truck or Winch Truck (with poles when used for hoisting)							
	Hoists, Air Tuggers, Elevators							
	Loaders:							
	(a) Elevating-Athey, Barber Greene & similar types							
	(b) Forklifts or Lumber Carrier (on construction job sites)							
	(c) Forklifts, (with tower)							
	(d) Overhead & Front End, (under 2-1/2 yards)							
	Locomotives: Dinkey (air, steam, gas & electric) Speeders							
	Mechanics, Light Duty							
	Oil, Blower Distribution							
	Posthole Digger, Mechanical							
	Pot Fireman (power agitated)							
	Power Plant, Turbine Operator, (under 200 k.w.)							
	Pumps, Water							
	Roller (other than Asphalt)							
	Saws, Concrete							
	Skid Hustler							
	Skid Steer (with all attachments)							
	Stake Hopper							
	Straightening Machine							
	Tow Tractor							
<b>A1605</b>	Group IV, including:	35.83	11.05	13.75	1.00	0.10	0.05	61.78
	Crane Assistant Engineer/Rig Oiler							
	Drill Helper							
	Parts & Equipment Coordinator							

Wage benefits key: BHR=basic hourly rate; H&W=health and welfare; IAF=industry advancement fund; LEG=legal fund; L&M=labor/management fund; PEN=pension fund; SAF=safety; SUI=supplemental unemployment insurance; S&L=SUI & LEG combined; TRN=training; THR=total hourly rate; VAC=vacation



Class Code	Classification of Laborers & Mechanics	BHR	H&W	PEN	TRN	Other	Benefits	THR
Power Equipment Operators								
*See per diem note on last page								
		L&M						
A1605	Group IV, including:	35.83	11.05	13.75	1.00	0.10	0.05	61.78
	Spotter							
	Steam Cleaner							
	Swamper (on trenching machines or shovel type equipment)							
Roofers								
*See per diem note on last page								
		L&M						
A1701	Roofer & Waterproofer	44.62	13.75	3.91	0.81	0.10	0.06	63.25
		L&M						
A1702	Roofer Material Handler	31.23	13.75	3.91	0.81	0.10	0.06	49.86
Sheet Metal Workers, Region I (North of N63 latitude)								
*See per diem note on last page								
		L&M						
N1801	Sheet Metal Journeyman	49.04	11.85	14.61	1.80	0.12		77.42
	Air Balancing and duct cleaning of HVAC systems							
	Brazing, soldering or welding of metals							
	Demolition of sheet metal HVAC systems							
	Fabrication and installation of exterior wall sheathing, siding, metal roofing, flashing, decking and architectural sheet metal work							
	Fabrication and installation of heating, ventilation and air conditioning ducts and equipment							
	Fabrication and installation of louvers and hoods							
	Fabrication and installation of sheet metal lagging							
	Fabrication and installation of stainless steel commercial or industrial food service equipment							
	HVAC-R Service Mechanic, servicing and maintaining HVAC-R Systems							
	Manufacture, fabrication assembly, installation and alteration of all ferrous and nonferrous metal work							
	Metal lavatory partitions							
	Preparation of drawings taken from architectural and engineering plans required for fabrication and erection of sheet metal work							
	Sheet Metal shelving							
	Sheet Metal venting, chimneys and breaching							
	Skylight installation							
Sheet Metal Workers, Region II (South of N63 latitude)								
*See per diem note on last page								

Wage benefits key: BHR=basic hourly rate; H&W=health and welfare; IAF=industry advancement fund; LEG=legal fund; L&M=labor/management fund; PEN=pension fund; SAF=safety; SUI=supplemental unemployment insurance; S&L=SUI & LEG combined; TRN=training; THR=total hourly rate; VAC=vacation

Class Code	Classification of Laborers & Mechanics	BHR	H&W	PEN	TRN	Other	Benefits	THR
------------	--	-----	-----	-----	-----	-------	----------	-----

### Sheet Metal Workers, Region II (South of N63 latitude)

\*See per diem note on last page

							L&M	
<b>S1801</b>	Sheet Metal Journeyman	45.35	12.23	14.70	1.83	0.43		74.54
	Air Balancing and duct cleaning of HVAC systems							
	Brazing, soldering or welding of metals							
	Demolition of sheet metal HVAC systems							
	Fabrication and installation of exterior wall sheathing, siding, metal roofing, flashing, decking and architectural sheet metal work							
	Fabrication and installation of heating, ventilation and air conditioning ducts and equipment							
	Fabrication and installation of louvers and hoods							
	Fabrication and installation of sheet metal lagging							
	Fabrication and installation of stainless steel commercial or industrial food service equipment							
	HVAC-R Service Mechanic, servicing and maintaining HVAC-R Systems							
	Manufacture, fabrication assembly, installation and alteration of all ferrous and nonferrous metal work							
	Metal lavatory partitions							
	Preparation of drawings taken from architectural and engineering plans required for fabrication and erection of sheet metal work							
	Sheet Metal shelving							
	Sheet Metal venting, chimneys and breaching							
	Skylight installation							

### Sprinkler Fitters

\*See per diem note on last page

							L&M	
<b>A1901</b>	Sprinkler Fitter	51.51	10.55	18.15	0.52	0.25		80.98

### Surveyors

\*See per diem note on last page

							L&M	
<b>A2001</b>	Chief of Parties	46.16	12.23	13.64	1.15	0.10		73.28
							L&M	
<b>A2002</b>	Party Chief	44.57	12.23	13.64	1.15	0.10		71.69
							L&M	
<b>A2003</b>	Line & Grade Technician/Office Technician/GPS, Drones	43.97	12.23	13.64	1.15	0.10		71.09
							L&M	
<b>A2004</b>	Associate Party Chief (including Instrument Person & Head Chain Person)/Stake Hop/Grademan	41.85	12.23	13.64	1.15	0.10		68.97

Wage benefits key: BHR=basic hourly rate; H&W=health and welfare; IAF=industry advancement fund; LEG=legal fund; L&M=labor/management fund; PEN=pension fund; SAF=safety; SUI=supplemental unemployment insurance; S&L=SUI & LEG combined; TRN=training; THR=total hourly rate; VAC=vacation

Class Code	Classification of Laborers & Mechanics	BHR	H&W	PEN	TRN	Other Benefits	THR
------------	--	-----	-----	-----	-----	----------------	-----

### Surveyors

\*See per diem note on last page

<b>A2006</b>	Chain Person (for crews with more than 2 people)	37.51	12.23	13.64	1.15	<b>L&amp;M</b> 0.10	64.63
--------------	--	-------	-------	-------	------	------------------------	-------

### Truck Drivers

\*See per diem note on last page

<b>A2101</b>	Group I, including:	42.94	12.23	13.64	1.15	<b>L&amp;M</b> 0.10	70.06
--------------	---------------------	-------	-------	-------	------	------------------------	-------

Air/Sea Traffic Controllers  
Ambulance/Fire Truck Driver (EMT certified)  
Boat Coxswain  
Captains & Pilots (air & water)  
Deltas, Commanders, Rollagons, & similar equipment (when pulling sleds, trailers or similar equipment)  
Dump Trucks (including rockbuggy, side dump, belly dump, & trucks with pups) over 40 yards up to & including 60 yards  
Helicopter Transporter  
Liquid Vac Truck/Super Vac Truck  
Material Coordinator or Purchasing Agent  
Ready-mix (over 12 yards up to & including 15 yards) (over 15 yards to be negotiated)  
Semi with Double Box Mixer  
Tireman, Heavy Duty/Fueler  
Water Wagon (250 Bbls and above)

<b>A2102</b>	Group 1A including:	44.21	12.23	13.64	1.15	<b>L&amp;M</b> 0.10	71.33
--------------	---------------------	-------	-------	-------	------	------------------------	-------

Dump Trucks (including rockbuggy, side dump, belly dump & trucks with pups) over 60 yards up to & including 100 yards (over 100 yards to be negotiated)  
Jeeps (driver under load)  
Lowboys, including tractor attached trailers & jeeps, up to & including 12 axles (over 12 axles or 150 tons to be negotiated)

<b>A2103</b>	Group II, including:	41.68	12.23	13.64	1.15	<b>L&amp;M</b> 0.10	68.80
--------------	----------------------	-------	-------	-------	------	------------------------	-------

All Deltas, Commanders, Rollagons, & similar equipment  
Batch Trucks (8 yards & up)  
Batch Trucks (up to & including 7 yards)  
Boom Truck/Knuckle Truck (over 5 tons)  
Cacasco Truck/Heat Stress Truck  
Construction and Material Safety Technician  
Dump Trucks (including rockbuggy, side dump, belly dump, & trucks with pups) over 20 yards up to & including 40 yards  
Gin Pole Truck, Winch Truck, Wrecker (truck mounted "A" frame manufactured rating over 5 tons)

Wage benefits key: BHR=basic hourly rate; H&W=health and welfare; IAF=industry advancement fund; LEG=legal fund; L&M=labor/management fund; PEN=pension fund; SAF=safety; SUI=supplemental unemployment insurance; S&L=SUI & LEG combined; TRN=training; THR=total hourly rate; VAC=vacation

Class Code	Classification of Laborers & Mechanics	BHR	H&W	PEN	TRN	Other Benefits	THR
------------	--	-----	-----	-----	-----	----------------	-----

## Truck Drivers

\*See per diem note on last page

<b>A2103</b>	Group II, including:	41.68	12.23	13.64	1.15	<b>L&amp;M</b> 0.10	68.80
--------------	----------------------	-------	-------	-------	------	------------------------	-------

Mechanics  
Oil Distributor Driver  
Partsman  
Ready-mix (up to & including 12 yards)  
Stringing Truck  
Turn-O-Wagon or DW-10 (not self loading)

<b>A2104</b>	Group III, including:	40.86	12.23	13.64	1.15	<b>L&amp;M</b> 0.10	67.98
--------------	-----------------------	-------	-------	-------	------	------------------------	-------

Boom Truck/Knuckle Truck (up to & including 5 tons)  
Dump Trucks (including rockbuggy, side dump, belly dump, & trucks with pups) over 10 yards up to & including 20 yards  
Expeditor (electrical & pipefitting materials)  
Gin Pole Truck, Winch Truck, Wrecker (truck mounted "A" frame manufactured rating 5 tons & under)  
Greaser - Shop  
Semi or Truck & Trailer  
Thermal Plastic Layout Technician  
Traffic Control Technician  
Trucks/Jeeps (push or pull)

<b>A2105</b>	Group IV, including:	40.28	12.23	13.64	1.15	<b>L&amp;M</b> 0.10	67.40
--------------	----------------------	-------	-------	-------	------	------------------------	-------

Air Cushion or similar type vehicle  
All Terrain Vehicle  
Buggymobile  
Bull Lift & Fork Lift, Fork Lift with Power Boom & Swing Attachment (over 5 tons)  
Bus Operator (over 30 passengers)  
Cement Spreader, Dry  
Combination Truck-Fuel & Grease  
Compactor (when pulled by rubber tired equipment)  
Dump Trucks (including rockbuggy, side dump, belly dump, & trucks with pups) up to & including 10 yards  
Dumpster  
Expeditor (general)  
Fire Truck/Ambulance Driver  
Flat Beds, Dual Rear Axle  
Foam Distributor Truck Dual Axle  
Front End Loader with Fork  
Grease Truck  
Hydro Seeder, Dual Axle  
Hyster Operators (handling bulk aggregate)

Wage benefits key: BHR=basic hourly rate; H&W=health and welfare; IAF=industry advancement fund; LEG=legal fund; L&M=labor/management fund; PEN=pension fund; SAF=safety; SUI=supplemental unemployment insurance; S&L=SUI & LEG combined; TRN=training; THR=total hourly rate; VAC=vacation

Class Code	Classification of Laborers & Mechanics	BHR	H&W	PEN	TRN	Other	Benefits	THR
------------	--	-----	-----	-----	-----	-------	----------	-----

### Truck Drivers

\*See per diem note on last page

							L&M	
<b>A2105</b>	Group IV, including:	40.28	12.23	13.64	1.15	0.10		67.40
	Loadmaster (air & water operations)							
	Lumber Carrier							
	Ready-mix, (up to & including 7 yards)							
	Rigger (air/water/oilfield)							
	Tireman, Light Duty							
	Track Truck Equipment							
	Truck Vacuum Sweeper							
	Warehouseperson							
	Water Truck (Below 250 Bbls)							
	Water Truck (straight)							
	Water Wagon, Semi							

							L&M	
<b>A2106</b>	Group V, including:	39.52	12.23	13.64	1.15	0.10		66.64
	Buffer Truck							
	Bull Lifts & Fork Lifts, Fork Lifts with Power Boom & Swing							
	Attachments (up to & including 5 tons)							
	Bus Operator (up to 30 passengers)							
	Farm Type Rubber Tired Tractor (when material handling or pulling wagons on a construction project)							
	Flat Beds, Single Rear Axle							
	Foam Distributor Truck Single Axle							
	Fuel Handler (station/bulk attendant)							
	Gear/Supply Truck							
	Gravel Spreader Box Operator on Truck							
	Hydro Seeders, Single axle							
	Pickups (pilot cars & all light-duty vehicles)							
	Rigger/Swamper							
	Tack Truck							
	Team Drivers (horses, mules, & similar equipment)							

### Tunnel Workers, Laborers (The Alaska areas north of N63 latitude and east of W138 longitude)

\*See per diem note on last page

							L&M	LEG	
<b>N2201</b>	Group I, including:	36.30	8.95	21.16	1.40	0.20	0.20		68.21
	Brakeman								
	Mucker								
	Nipper								
	Storm Water Pollution Protection Plan Worker (SWPPP Worker - erosion and sediment control Laborer)								
	Topman & Bull Gang								

Wage benefits key: BHR=basic hourly rate; H&W=health and welfare; IAF=industry advancement fund; LEG=legal fund; L&M=labor/management fund; PEN=pension fund; SAF=safety; SUI=supplemental unemployment insurance; S&L=SUI & LEG combined; TRN=training; THR=total hourly rate; VAC=vacation

Class Code	Classification of Laborers & Mechanics	BHR	H&W	PEN	TRN	Other	Benefits	THR
Tunnel Workers, Laborers (The Alaska areas north of N63 latitude and east of W138 longitude)								
*See per diem note on last page								
N2201	Group I, including:	36.30	8.95	21.16	1.40	L&M 0.20	LEG 0.20	68.21
	Tunnel Track Laborer							
N2202	Group II, including:	37.40	8.95	21.16	1.40	L&M 0.20	LEG 0.20	69.31
	Burning & Cutting Torch							
	Certified Erosion Sediment Control Lead (CESCL Laborer)							
	Concrete Laborer							
	Floor Preparation, Core Drilling							
	Jackhammer/Chipping Gun or Pavement Breaker							
	Laser Instrument Operator							
	Nozzlemen, Pumpcrete or Shotcrete							
	Pipelayer Helper							
N2203	Group III, including:	38.39	8.95	21.16	1.40	L&M 0.20	LEG 0.20	70.30
	Miner							
	Retimberman							
N2204	Group IIIA, including:	42.00	8.95	21.16	1.40	L&M 0.20	LEG 0.20	73.91
	Asphalt Raker, Asphalt Belly Dump Lay Down							
	Drill Doctor (in the field)							
	Driller (including, but not limited to wagon drills, air-track drills, hydraulic drills)							
	Pioneer Drilling & Drilling Off Tugger (all type drills)							
	Pipelayer							
	Powderman (Employee Possessor)							
	Storm Water Pollution Protection Plan Specialist (SWPPP Specialist)							
	Traffic Control Supervisor, DOT Qualified							
N2206	Group IIIB, including:	46.17	6.24	21.16	1.40	L&M 0.20	LEG 0.20	75.37
	Driller (including, but not limited to wagon drills, air-track drills, hydraulic drills)(over 5,000 hours)							
	Federal Powderman (Responsible Person in Charge)							
	Grade Checking (setting or transferring of grade marks, line and grade, GPS, drones)							
	Pioneer Drilling & Drilling Off Tugger (all type drills)(over 5,000 hours)							
	Stake Hopper							
Tunnel Workers, Laborers (The area that is south of N63 latitude and west of W138 longitude)								
*See per diem note on last page								

Wage benefits key: BHR=basic hourly rate; H&W=health and welfare; IAF=industry advancement fund; LEG=legal fund; L&M=labor/management fund; PEN=pension fund; SAF=safety; SUI=supplemental unemployment insurance; S&L=SUI & LEG combined; TRN=training; THR=total hourly rate; VAC=vacation

Class Code	Classification of Laborers & Mechanics	BHR	H&W	PEN	TRN	Other	Benefits	THR
------------	--	-----	-----	-----	-----	-------	----------	-----

**Tunnel Workers, Laborers (The area that is south of N63 latitude and west of W138 longitude)**

\*See per diem note on last page

						L&M	LEG	
<b>S2201</b>	Group I, including:	36.30	8.95	21.16	1.40	0.20	0.20	68.21
	Brakeman							
	Mucker							
	Nipper							
	Storm Water Pollution Protection Plan Worker (SWPPP Worker - erosion and sediment control Laborer)							
	Topman & Bull Gang							
	Tunnel Track Laborer							
<b>S2202</b>	Group II, including:	37.40	8.95	21.16	1.40	0.20	0.20	69.31
	Burning & Cutting Torch							
	Certified Erosion Sediment Control Lead (CESCL Laborer)							
	Concrete Laborer							
	Floor Preparation, Core Drilling							
	Jackhammer/Chipping Gun or Pavement Breaker							
	Laser Instrument Operator							
	Nozzlemen, Pumpcrete or Shotcrete							
	Pipelayer Helper							
<b>S2203</b>	Group III, including:	38.39	8.95	21.16	1.40	0.20	0.20	70.30
	Miner							
	Retimberman							
<b>S2204</b>	Group IIIA, including:	42.00	8.95	21.16	1.40	0.20	0.20	73.91
	Asphalt Raker, Asphalt Belly Dump Lay Down							
	Drill Doctor (in the field)							
	Driller (including, but not limited to wagon drills, air-track drills, hydraulic drills)							
	Pioneer Drilling & Drilling Off Tugger (all type drills)							
	Pipelayer							
	Powderman (Employee Possessor)							
	Storm Water Pollution Protection Plan Specialist (SWPPP Specialist)							
	Traffic Control Supervisor, DOT Qualified							
<b>S2206</b>	Group IIIB, including:	46.17	6.24	21.16	1.40	0.20	0.20	75.37
	Driller (including, but not limited to wagon drills, air-track drills, hydraulic drills)(over 5,000 hours)							
	Federal Powderman (Responsible Person in Charge)							
	Grade Checking (setting or transferring of grade marks, line and grade, GPS, drones)							
	Pioneer Drilling & Drilling Off Tugger (all type drills)(over 5,000 hours)							

Wage benefits key: BHR=basic hourly rate; H&W=health and welfare; IAF=industry advancement fund; LEG=legal fund; L&M=labor/management fund; PEN=pension fund; SAF=safety; SUI=supplemental unemployment insurance; S&L=SUI & LEG combined; TRN=training; THR=total hourly rate; VAC=vacation

Class Code	Classification of Laborers & Mechanics	BHR	H&W	PEN	TRN	Other	Benefits	THR
<b>Tunnel Workers, Laborers (The area that is south of N63 latitude and west of W138 longitude)</b>								
*See per diem note on last page								

						L&M	LEG	
<b>S2206</b>	Group IIIB, including:	46.17	6.24	21.16	1.40	0.20	0.20	75.37
	Stake Hopper							

<b>Tunnel Workers, Power Equipment Operators</b>								
*See per diem note on last page								

						L&M		
<b>A2207</b>	Group I	47.88	11.05	13.75	1.00	0.10	0.05	73.83
<b>A2208</b>	Group IA	49.82	11.05	13.75	1.00	0.10	0.05	75.77
<b>A2209</b>	Group II	47.04	11.05	13.75	1.00	0.10	0.05	72.99
<b>A2210</b>	Group III	46.24	11.05	13.75	1.00	0.10	0.05	72.19
<b>A2211</b>	Group IV	39.41	11.05	13.75	1.00	0.10	0.05	65.36

\* Per diem is an established practice for this classification. This means that per diem is an allowable alternative to board and lodging if all criteria are met. See 8 AAC 30.051-08 AAC 30.056, and the per diem information on page vii of this Pamphlet.

\*\* Work in combination of classifications: Employees working in any combination of classifications within the diving crew (working diver, standby diver, and tender) in a shift are paid in the classification with the highest rate for a minimum of 8 hours per shift.



### Shipyard Rates Addendum

This Addendum was developed to address the specialized industry of shipbuilding/repair in Alaska, as it relates to public works. For the purposes of providing rates for shipyard work the Department is adopting Shipyard rates from the state of Washington ( King County ). These rates only apply to work done in shipbuilding/repair in Alaska, under a public contract. This addendum will be updated two times a year to coincide with the corresponding Issue of *Laborers and Mechanics MINIMUM RATES OF PAY*.

Class Code	BHR H&W PEN TRN Other Benefits THR
<b>Shipyard Workers</b> *See total hourly(THR) note below	
A2300	Ship Building/Repair Boilermaker 47.45
A2305	Ship Building/Repair Carpenter 47.35
A2310	Ship Building/Repair Crane Operator 45.06
A2315	Ship Building/Repair Electrician 48.92
A2320	Ship Building/Repair Heat & Frost Insulator 82.02
A2325	Ship Building/Repair Laborer 47.35
A2330	Ship Building/Repair Mechanist 47.35
A2335	Ship Building/Repair Operating Engineer 45.06
A2340	Ship Building/Repair Painter 47.35
A2345	Ship Building/Repair Pipefitter 47.35
A2350	Ship Building/Repair Rigger 47.45
A2355	Ship Building/Repair Sheet Metal 47.35
A2360	Ship Building/Repair Shipwright 47.35
A2365	Ship Building/Repair Warehouse 45.06

\*The THR includes the base hourly rate (BHR) and fringe benefits. Employers must pay a BHR and fringe benefit package that adds up to the THR. Fringe benefits included in the THR can be paid to employees in three ways; paid into a union trust fund, into an approved benefit plan, or paid directly on the paycheck as gross wages.

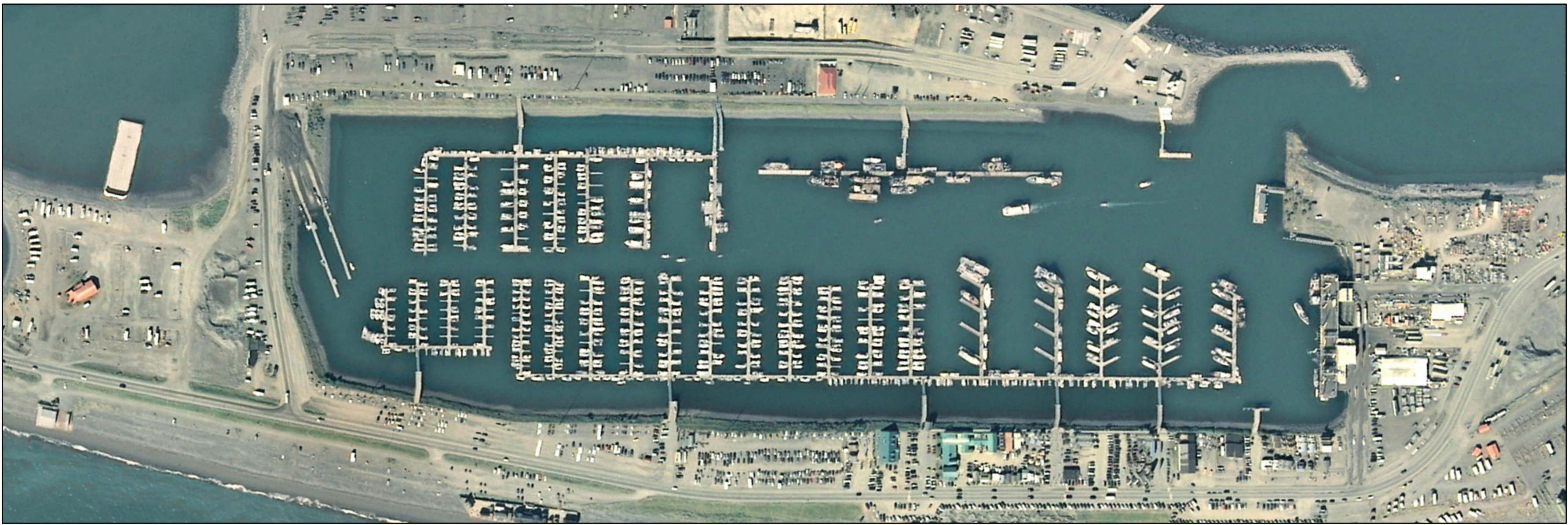
Wage benefits key: BHR=basic hourly rate; H&W=health and welfare; IAF=industry advancement fund; LEG=legal fund; L&M=labor/management fund; PEN=pension fund; SAF=safety; SUI=supplemental unemployment insurance; S&L=SUI & LEG combined; TRN=training; THR=total hourly rate; VAC=vacation





\\rm.rmc\rm\project\2532.01 C Homer Port Term SBH Cathodic Protect\Civil\ACAD\2532.01 - G1 Cover.dwg

Plotted 9/15/2022 1:06 PM by Don Porter



# HOMER BOAT HARBOR CATHODIC PROTECTION HOMER, ALASKA

8-25-2022 9-15-2022



**KEN CASTNER**  
MAYOR • CITY OF HOMER

**ROB DUMOUCHEL**  
CITY MANAGER • CITY OF HOMER

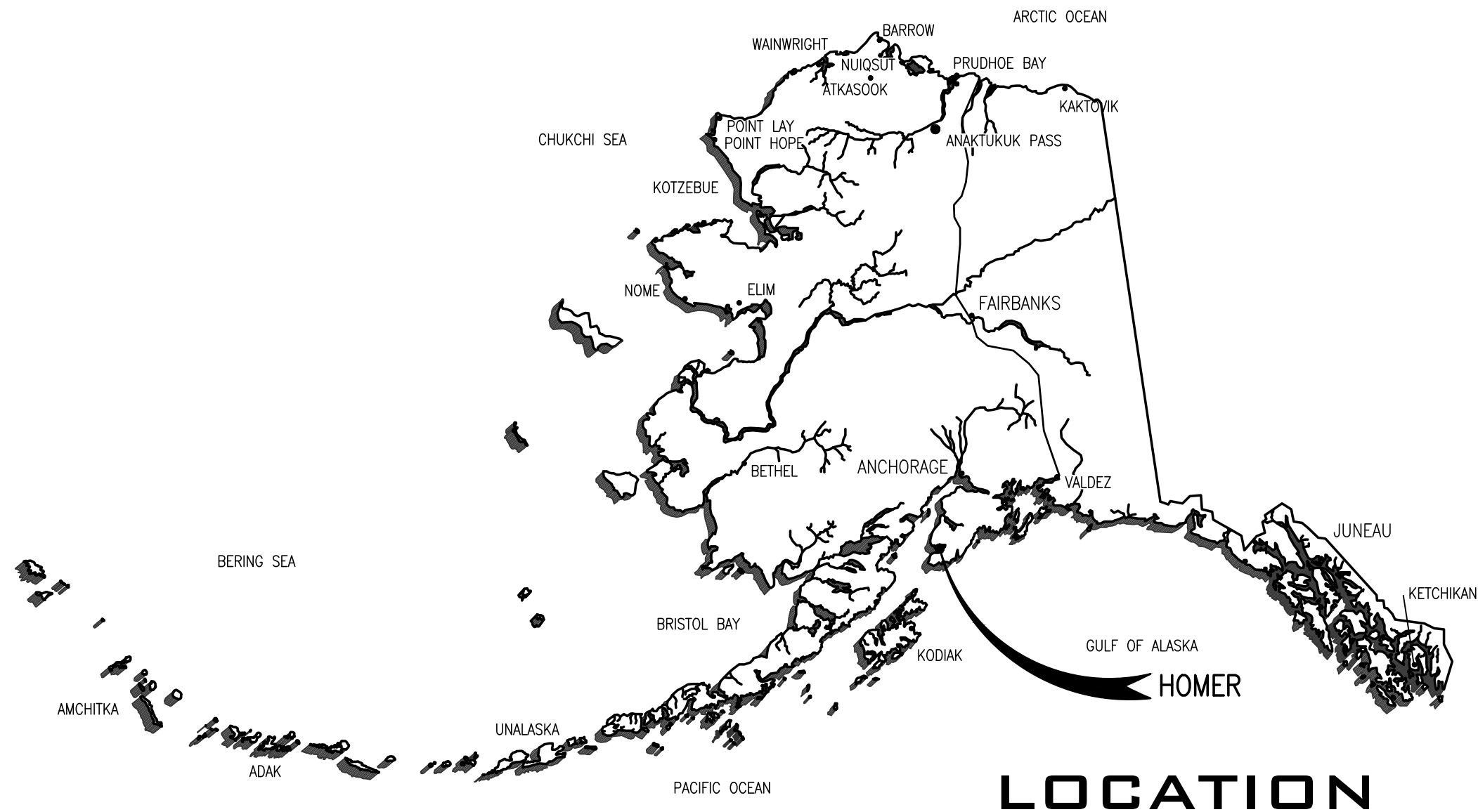
**BRYAN HAWKINS**  
PORT & HARBOR DIRECTOR • CITY OF HOMER

Designed By:

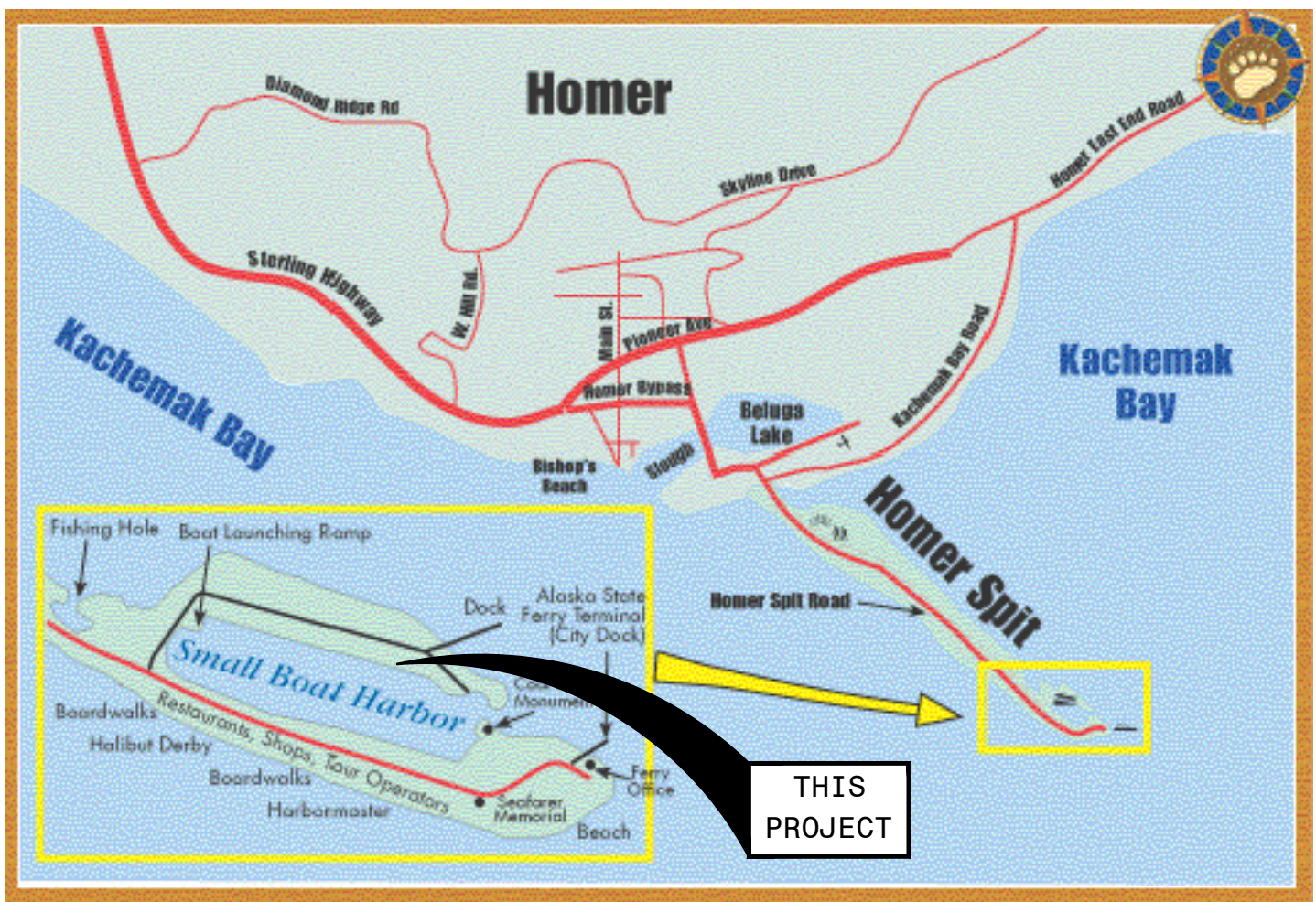


**R&M CONSULTANTS, INC.**

9101 Vanguard Drive  
Anchorage, Alaska 99507  
rmconsult.com • email@rmconsult.com  
phone: 907.522.1707 • fax: 907.522.3403



LOCATION



VICINITY

## INDEX OF DRAWINGS

SHT	TITLE
G 1	TITLE SHEET
G 2	GENERAL NOTES AND ANODE DETAILS
G 3	HOMER HARBOR SITE PLAN

ADDENDUM 4

INDEX

G 1

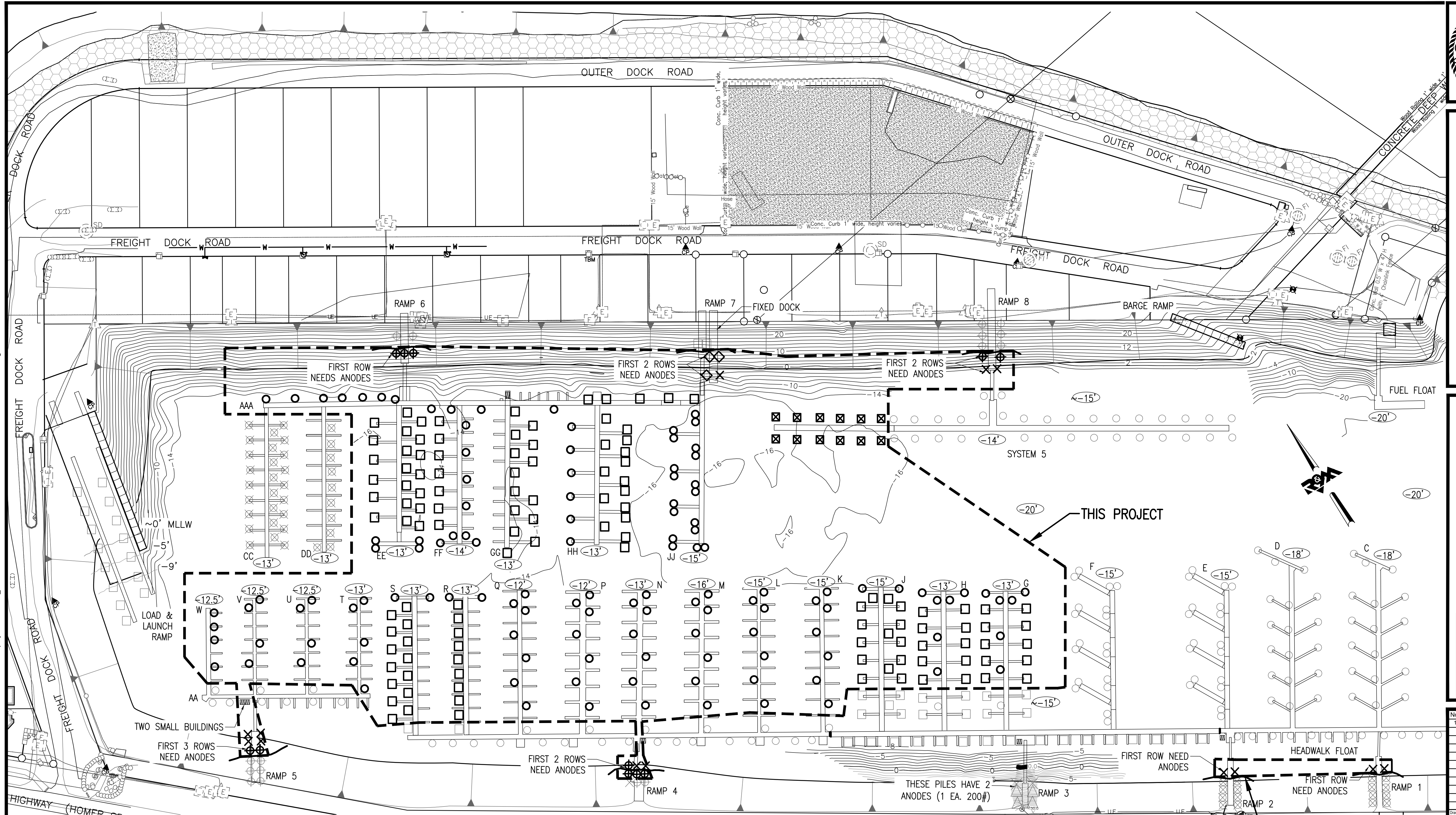










[illegible]

Scale: 1" = 100'

- (XX) SPOT ELEVATIONS  
 XXX MOORAGE FLOAT DESIGNATION  
 ☒ TIMBER PILES  
 □ 12 ¾"Ø STEEL PILES (NOT IN CONTRACT)  
 ○ 16"Ø STEEL PILES (NOT IN CONTRACT)  
 △ 18"Ø STEEL PILES (NOT IN CONTRACT)  
 ✕ 24"Ø STEEL PILES (NOT IN CONTRACT)

## ADDENDUM 4

OF 3

G3

\\rm.rmnnet\z\project\2532.01 C\_Homer Port Term SBH Cathodic Protect\Civil\ACAD\2532.01 - G3 Site Plan.dwg

Plotted 9/15/2022 1:07 PM by Don Porter



