

CITY OF HOMER BID DOCUMENTS



Homer Airport Terminal Sidewalk Replacement Project

PREPARED BY:

CITY OF HOMER – PUBLIC WORKS DEPARTMENT

3575 HEATH STREET

HOMER ALASKA, 99603

(907) 235-3170

Table of Contents

Homer Airport Terminal Sidewalk Replacement Project

Sections	Pages
I. Invitation to Bid	3
II. Instructions to Bidders	7-11
III. Project Schedule	12
IV. Special Provisions	13-14
V. Bid Form	15
VI. Sample Contract Cover Page	17-18
VII. Bonds	19-24
A. Performance Bond	19-20
B. Payment Bond	21-22
C. Bid Bond	23-24
VIII. Addenda Acknowledgement Form	25
IX. EEO Clause	27-28
a. EEO-1 Form	29-32
X. Contractor Questionnaire	33-34
XI. Alaska State Labor Rates (Pamphlet 600 Issue 46)	35-73
XII. Aerial Map of Project Location	74

INVITATION TO BID

By the City of Homer, Alaska For the Homer Airport Terminal Sidewalk Replacement Project

Sealed Bids for construction of the Homer Airport Terminal Sidewalk Replacement Project will be received by the Office of the City Clerk, 491 E. Pioneer Avenue, Homer, Alaska 99603 until **2:00 PM on Thursday, September 28, 2023**, at which time they will be publicly opened. Bids received after the time fixed for receipt of the Bid shall not be considered. **All bidders must submit a City of Homer Plan Holders Registration form to be considered responsive.** Plan holder registration forms and Plan & Specifications are available online at <http://www.cityofhomer-ak.gov/rfps>

An electronic copy of the Bid Documents and Plan Holder Registration form are available online at <https://www.cityofhomer-ak.gov/rfps>. Paper copies of the Bid documents may be purchased at the Office of the City Clerk upon payment of \$75.00 per set (\$100 for priority mail delivery). All fees are non-refundable.

The project consists of furnishing all labor, materials, equipment, tools, supervision, and other facilities necessary to perform the project in accordance with the plans and specifications. The work includes, but is not limited to the following:

- Demolish existing concrete sidewalk
- Install heating loop system for new sidewalk
- Form and Pour new concrete sidewalk
- Maintain access to building during operating hours

Please direct all questions in writing regarding this project to: Janette Keiser, PE, Public Works Director, City of Homer Public Works Dept. 3575 Heath Street, Homer, Alaska 99603 or Email: jkeiser@ci.homer.ak.us

The City of Homer reserves the right to accept or reject any or all bids, and to waive irregularities or informalities in the bids.

Dated this 7th Day of September, 2023.

City of Homer



Robert Dumouchel, City Manager

INSTRUCTIONS TO BIDDERS
City of Homer, Alaska
Homer Airport Terminal Sidewalk Replacement Project

The City of Homer, Alaska is requesting bids from qualified firms and individuals for the project described herein.

The following subjects are discussed herein to assist you in the preparation of your bid.

- I. Introduction
- II. Scope of Services
- III. General Bidding Requirements
- IV. The Bid Package
- V. Tentative Project Schedule
- VI. Instructions to Bidders
- VII. Prevailing Wages
- VIII. Equal Opportunity Employment Certification

I. Introduction

The City of Homer requests bids for the Homer Airport Terminal Sidewalk Replacement Project. The purpose of this project is demolish the existing concrete sidewalk, install heating coils and replace the sidewalk.

All work activity associated with the project shall be completed by ~~November 30, 2023~~. **May 31, 2024**

II. Scope of Services

The proposed work is located within the limits of the City of Homer and is illustrated on the aerial photograph entitled Homer Airport Terminal.

The project is described in the Scope of Work and generally consists of furnishing all labor, materials, equipment, tools, supervision and other facilities necessary for the performance of the work described herein. The work includes, but is not limited to:

- Demolish the existing concrete sidewalk
- Install heating coils
- Replace the concrete sidewalk
- Maintain access to the Airport Terminal during its open hours

III. General Bidding Requirements

The work must be performed by a Contractor skilled and regularly engaged in the type of work called for under the Contract. Bidders must have a current contractor's license issued by the State of Alaska. The license must apply to the work described in the Invitation. **The City's local bidder preference requirements apply to this contract. State prevailing wage rates will apply.**

An electronic copy of the Invitation to Bid package is available on the City's website <http://www.cityofhomer-ak.gov/rfps> . City of Homer Standard Construction Specifications 2011 Edition (containing general contract

provisions) may also be downloaded from the City’s website. All fees are non-refundable. The City of Homer reserves the right to accept or reject any or all bids, to waive irregularities or informalities in the bids, and to award the contract to the lowest responsive, responsible bidder.

Performance and Payment bonds in the amount of 100 percent (100%) of the bid amount will be required if the bid exceeds \$100,000.

Bids must be submitted on the Bid Form and be received by **2:00 PM on ~~Tuesday~~ Thursday, September 5 28, 2023** at the Office of the City Clerk, City of Homer 491 E. Pioneer Avenue, Homer, Alaska, 99603. **A bid bond is not required.**

IV. The Bid Package

The City of Homer requires a two-part Bid Package, Part A and Part B. Each portion of the Bid Package must be submitted in separate envelopes, which shall be combined into one single Bid Package, marked with the name of the project and the time/date of the bid opening. The outside of the envelope must contain the Bidder’s name and mailing address.

At the bid opening, Part A is opened first and must be complete or Part B will not be opened and the bid will be rejected.

Part A of the bid contains:

- a. Addenda Acknowledgment Form
- b. If signature on the Bid is by an agent, other than an Officer of a Corporation, or of a member of a Co-partnership, a Power of Attorney must be submitted in Part A.
- c. EEO-1 Certification
- d. Equal Employment Opportunity Clause (Provided with the bid package)

Part A must be submitted, as part of the Bid Package, in a separate envelope marked Part A.

Part B of the bid contains:

- a. Bid Form

Part B must be submitted, as part of the Bid Package, in a separate envelope marked Part B.

V. Tentative Project Schedule

- | | |
|-----------------------------|---|
| • Bids Due | 2:00 p.m. on Tuesday, September 5, 2023
○ <u>Thursday September 28, 2023</u> |
| • Notice of Intent to Award | September 5, 2023 <u>September 29, 2023</u> |
| • Award by City Council | September 11, 2023 <u>October 9, 2023</u> |
| • Notice to Proceed | September 12, 2023 <u>October 10, 2023</u> |
| • Pre-Construction Meeting | TBD |
| • Start Construction | TBD |
| • Contract Completion | November 30, 2023 <u>May 31, 2024</u> |

VI. Instructions to Bidders

The City of Homer intends to award the contract to the lowest responsive, responsible bidder but reserves the right to accept or reject any or all proposals, to waive irregularities or informalities in the bids or bid process, and to award the contract to the bidder that best meets the criteria stated below.

A. Qualification of Bidders

It is the intention of the City of Homer to award this contract to the Bidder who furnishes satisfactory evidence they have the requisite experience, ability and sufficient capital, facilities and plant to prosecute the work successfully (and properly) and to complete it within the time allowed in the Contract at the least cost to the City of Homer for dollars spent for value received. Bidders will be required to fill out a questionnaire attesting to their qualifications.

B. Taxes

Attention is directed to the requirements of the General Conditions regarding the payment of taxes. All taxes that are lawfully assessed against Owner or Contractor in connection with the work shall be paid by the Contractor. The Bid prices shall include all such taxes.

The City of Homer is exempt from local sales taxes. The Contractor shall not include sales tax markup in his bid. However, in order to recoup sales tax the Contractor might pay at local vendors, the Contractor must secure a Tax Exempt card from the Kenai Peninsula Borough Tax Department.

C. Familiarization with the Work

Before submitting its Bid, each prospective Bidder shall familiarize itself with the work, labor conditions and all laws, regulations and other factors affecting performance of the work. Bidders shall carefully correlate their observations with the requirements of the Contract Documents and otherwise satisfy themselves of the expense and difficulties attending performance of the work. The submission of a Bid shall constitute an acknowledgement that the Bidder has thoroughly examined and is familiar with the Contract Documents and the provisions thereof. The failure or neglect of a Bidder to receive or examine any of the Bid Documents shall in no way relieve the bidder from any obligations with the respect to their Bid or to the Contract. Misinterpretation or a reputed lack of knowledge concerning the Bid will not serve as a basis for a claim for additional compensation.

Each Bidder shall visit the site of the work and completely inform themselves relative to construction hazards and procedures, the availability of lands, the character and quantity of surface and subsurface materials and utilities to be encountered, the arrangement and conditions of existing structures and facilities, the procedure necessary for maintenance of uninterrupted operations of existing facilities, the character of construction equipment and facilities needed for performance of the work, and facilities for transportation, handling and storage of materials and equipment. All such factors shall be properly investigated and considered in the preparation of the Bid.

D. Interpretation of Bid Documents

All questions about the meaning or intent of the Contract Documents shall be submitted to the Office of the Director of Public Works in writing. Replies will be issued by Addenda and delivered to all parties recorded by the City Clerk's Office as having received the Bidding documents. **The City of Homer will not be held responsible for questions received less than (5) calendar days prior to the date of opening of Bids.** Only questions answered by formal written Addenda will be binding. Oral and other interpretations or clarifications will be without legal effect.

The Bidder shall acknowledge receipt of all Addenda on the Addendum Form, which shall be properly signed by the Bidder and placed in Part A.

It shall be the Bidder's responsibility to inquire as to addenda issued. **Failure to include the Addenda Form in Part A of the Bid Package shall result in the Bid being rejected as non-responsive.**

E. Contract Time

The Contract Time is an essential part of the Contract and it will be necessary for each Bidder to satisfy the City of his ability to complete the work within the time set forth in the Bid form. Provisions for delays, liquidated damages, and extensions of time are set forth in the Standard Construction Specifications. Time is of the essence in this contract.

F. Preparation of Bids

Bids must be submitted on the forms provided by the City and completed in all respects as required by the Bid Documents. Bids shall include all information requested herein, and be manually signed by the Bidder or the Bidder's duly authorized representative, with the Bidder's address and phone number. If the signature is by an agent, other than an Officer of a Corporation, or a member of a Co-partnership, a Power of Attorney must be submitted in Part A of the Bid; otherwise, the Bid will be rejected as non-responsive. **All Bids must be regular in every respect, and no alterations shall be made to the Bid form.**

If erasures or changes appear on the forms, each must be initialed by the person signing the Bid. No oral, telegraphic, electronic or telephone proposals will be considered.

Bid Packages, containing separate envelopes for Part A and Part B of the bid, will be received at the City Clerk's Office located at City of Homer, City Hall, 491 East Pioneer Avenue, Homer, Alaska 99603, until the time indicated on the Invitation to Bid. Each Bid shall be submitted enclosed in a sealed, opaque envelope. **The envelope shall have the Bid title and date of Bid opening on the lower left-hand corner of the Bid Package. The envelope shall have the Bidder's name and mailing address in the upper left hand corner.** The City is not responsible for the premature opening of, or failure to open, a bid not properly addressed and identified.

No consideration will be given by the City to a claim or error unless such claim is made to the City in writing within two (2) hours after the time of Bid opening. Written verification and supporting evidence of the error shall be delivered to the City Clerk within 24 hours of the Bid Opening (not including Saturday, Sunday or

legal holidays) to allow consideration of the claim for error. Supporting evidence shall be original documents, including cost breakdown sheets, supplier quotes and other documents used to compute the Bid.

It is the bidder's responsibility to see that Bid Packages are deposited at the time and place set forth for the public opening of Bids. Bids not received by the time will not be considered responsive and shall not be considered.

VII. Labor Rates

State Labor Rates.

This project is covered by the State of Alaska Title 36 Laborer's and Mechanic's Minimum Rate of Pay (AS 36.05.010 & 36.05.050) Pamphlet No. 600, Issue 46, Effective April 1, 2023. It is the responsibility of the bidder to determine the current rates of pay required and to submit the proper certified payrolls to the State Department of Labor.

VIII. Equal Opportunity Employment

Bidders must submit forms related to Equal Employment Opportunity with their bids, including:

- Equal Employment Opportunity Clause (Provided with the bid package)
- EEO-1 Certification

Tentative Project Schedule

Homer Airport Terminal Sidewalk Replacement Project

Advertise	Homer News	August 24 & 31, 2023 <u>September 14 & 21, 2023</u> <u>September 16, 2023</u>
Bids Due	Tuesday, September 5, 2023 <u>Thursday, September 28, 2023</u>	2:00 p.m.
Notice of Intent to Award	September 5, 2023	<u>Friday, September 29, 2023</u>
Council Award	September 11, 2023	<u>Monday, October 9, 2023</u>
Notice to Proceed	September 12, 2023	<u>Tuesday, October 10, 2023</u>
Pre-Construction Meeting	TBD	
Start Construction	TBD	
Construction Complete	November 30, 2023	<u>May 31, 2024</u>

SPECIAL PROVISIONS

Homer Airport Terminal Sidewalk Replacement Project

The construction contract for this project will be administered in accordance with the General Provisions of the City’s Standard Construction Specifications (2011).

MODIFICATIONS TO GENERAL PROVISIONS

SP - 1: Section 10.04 – Add New Article 4.6 – Scope of Work

The Work included under this Contract consists of furnishing all labor, materials, equipment, supervision, and other facilities necessary to successfully complete the Work, including removing and replacing existing sidewalk and curb with approximately 2,600 SF of new concrete sidewalk and 162 LF of concrete curb, to the following specifications:

1. 4” thick concrete sidewalk; match existing width(s);
2. 4000 psi concrete;
3. ½ inch rebar placed on a 3’ grid in sidewalk;
4. Include two cast-in-place plates with truncated domes for the handicapped ramps, per ADA specifications;
5. Ice melt heat tubing;
6. 2” Rtrek 25 psi foam insulation;
7. New curb to match existing curb;
8. Removing and replacing approximately 930 SF asphalt;
9. Maintain access to building during operating hours.

SP – 2: Section 10.07 – Modify Article 7.6 – Progress Payments

1. Remove the following language:

“Until such time as the work is accepted by the City, retainage shall be withheld in accordance with the following schedule:

Contract Completion Percentage	Retainage Percentage
0-75%	10%
76-95%	5%*
Over 95%	5%*

*May be reduced to these percentages depending upon satisfactory performance and adherence to the Contractor’s progress schedule, clean-up, Contract completion cost and other factor, in the judgement of the Engineer.”

2. Add the following Language:

Basis of Payment – Compensation will be made as follows:

- Site Preparation – furnish all labor and materials required to (a) mobilize to the site; (b) demolish and dispose of existing sidewalk, curb and asphalt, and (c) demobilize, paid Lump Sum.
- Sidewalk – furnish all labor and materials required to build new concrete sidewalk to match existing, paid per SY of 4” sidewalk.
- Curb – furnish all labor and materials required to build new concrete curb to match new sidewalk and existing curb, paid per LF of curb.
- Cast-in-place ADA plates with truncated domes – furnish all labor and materials to install plates in new sidewalk, paid per each plate with truncated cones.
- Ice melt heating system – furnish all labor and materials to install ice melt heating system and foam insulation in new sidewalk, paid per Lump Sum.
- Asphalt – furnish all labor and materials to install new asphalt to match new sidewalk, paid per SY of asphalt.

Maintaining access to the building is an incidental cost, for which no separate payment will be made.

BID FORM

Homer Airport Terminal Sidewalk Replacement

ITEM NO.	SPEC NO.	BID ITEM DESCRIPTION	UNIT	QUAN TITY*	UNIT BID PRICE	TOTAL BID PRICE
1	101	Site Preparation	LS	1		
2	303	Sidewalk	SF	2600		
3	302	Curb	LF	162		
4	NA	Cast-in-Place ADA Plates With Truncated Cones	EA	2		
5	NA	Ice Melt Heating and Foam Insulation	LS	1		
7	401	Asphalt	SF	920		

Grand Total All Bid Items: \$_____

Name of Bidding Company_____

Address of Bidding Company_____

Signature of Company Representative _____ Date _____

Printed Name of Company Representative_____

Phone#/Email_____

CONTRACT

This Contract, made and entered into by and between the City of Homer, Alaska, a Municipal Corporation, hereinafter called the “City” and

(Company Name)

Hereinafter called the “Contractor”.

I. CONTRACT DOCUMENTS

The Contractor, in consideration of the sum to be paid by the City agrees to furnish all materials, tools, labor, machinery and appurtenances to perform the work set forth in the Contract documents, including:

- a. Signed copy of the Bid;
- b. Performance Bond;
- c. Payment Bond;
- d. Bid documents;
- e. All Addenda, totaling _;
- f. The drawings which consist of 1 sheet titled Homer Airport Terminal.
- g. The 2011 Homer Standard Construction Specifications, including the general provisions;

Said Contract Documents are fully and completely incorporated as part of the Contract as if the same were fully set forth herein.

In consideration of the performance of the work as set forth in these Contract Documents, the City agrees to pay to the Contractor the amounts specified in the Contract Documents and to make such payments upon the Contractor’s invoicing as approved by the City.

II. CONTRACT COMPLETION TIME

The Contractor agrees to complete the Project, in all respects on or before November 30, 2023.

III. CONTRACT AMOUNT

\$ _____

In Numbers

\$ _____

In Words

IN WITNESS WHEREOF, we, the parties hereto, each herewith subscribe the same this _____
day of _____, 2023.

CITY OF HOMER

By: _____
Robert Dumouchel

Title: City Manager

CONTRACTOR

(Contractor)

By: _____

Title: _____

PERFORMANCE BOND

KNOW ALL THESE PRESENTS: That we _____
(Name of Contractor)

_____ a _____
(Corporation, Partnership, Individual)

hereinafter called "Principal" and _____
(Surety)

of _____, State of _____

hereinafter called the "Surety" are held and firmly bound unto the City of Homer, hereinafter called "Owner," in the penal sum of _____ dollars (\$_____) in lawful money of the United States, for the payment of which sum well and truly to be made, we bind ourselves, our heirs, executors, administrators and successors, jointly and severally, firmly by these presents.

THE CONDITIONS OF THIS OBLIGATION are such that Whereas, the Principal has or is about to enter into a certain contract with the Owner, a copy of which is hereto attached and made a part hereof for the construction of:

NOW, THEREFORE, if the Principal shall well, truly and faithfully perform its duties, all the undertakings, covenants, terms, conditions, and agreements of said contract during the original term thereof, and any extensions thereof which may be granted by the Owner, with or without notice to the Surety, and if it shall satisfy all claims and demands incurred under such contract, and shall fully indemnify and save harmless the Owner from all costs and damages which it may suffer by reason of failure to do so, and shall reimburse and repay the Owner all outlay and expense which the Owner may incur in making good any default, then this obligations shall be void; otherwise to remain in full force and effect.

PROVIDED, FURTHER, that the said surety, for value received hereby stipulates and agrees that no change, extension of time, alteration or addition to the terms of the contract or the work to be performed thereunder or the specifications accompanying the same shall in any wise affect it obligation on this bond, and it does hereby waive notice of any such change, extension of time, alteration or addition to the terms of the contract or to the work or to the specifications.

PROVIDED, FURTHER, that no final settlement between the Owner and the Principal shall abridge the right of any beneficiary hereunder, whose claim may be unsatisfied.

IN WITNESS WHEREOF, this instrument is executed in five (5) counterparts, each one of which shall be deemed and original, this the _____ day of _____, 2022.

ATTEST:

(Principal's Corporate Secretary)

(Principal)

Affix CORPORATE SEAL if applicable

(Address-Zip Code)

(Witness as to Principal)

(Address - Zip Code)

(Surety)

ATTEST:

By: _____
(Attorney-in-Fact)

(Surety) Secretary

(Address-Zip Code)

(Affix SURETY'S SEAL)

(Witness as to Surety)

(Address-Zip Code)

Notes:

If Principal is Partnership, all partners must execute bond. The Attorney-in-Fact, who executes this bond on behalf of the surety, must attach a copy of his Power-of-Attorney as evidence of his authority.

PAYMENT BOND

KNOW ALL THESE PRESENTS: That we _____
(Name of Contractor)

_____ a _____
(Corporation, Partnership, Individual)

hereinafter called "Principal" and _____
(Surety)

of _____, State of _____

hereinafter called the "Surety" are held and firmly bound unto the City of Homer,

hereinafter called "Owner," in the penal sum of _____

dollars (\$ _____) in lawful money of the United States, for the payment of which sum well and truly to be made, we bind ourselves, our heirs, executors, administrators and successors, jointly and severally, firmly by these presents.

THE CONDITIONS OF THIS OBLIGATIONS are such that Whereas, the Principal has or is about to enter into a certain contract with the Owner, a copy of which is hereto attached and made a part hereof for the construction of:

NOW, THEREFORE, if the Principal shall promptly make payment to all persons, firms, subcontractors and corporations furnishing material for, or performing labor in the prosecution of the work provided for in such contract, and any authorized extension or modification thereof, including all amounts due for material, lubricants, fuels, repairs on machinery, equipment and tools, consumed or used in connection with the construction of such work, and all insurance premiums on said work, and for all labor performed in such work, whether by subcontractor or otherwise, then this obligation shall be void: otherwise to remain in full for and effect.

PROVIDED, FURTHER, that the said Surety, for value received hereby stipulates and agrees that no change, extension of time, alteration or addition to the terms of the contract or the work to be performed thereunder or the specifications accompanying the same shall in any wise affect it obligation on this bond, and it does hereby waive notice of any such change, extension of time, alteration or addition to the terms of the contract or to the work or to the specifications.

PROVIDED, FURTHER, that no final settlement between the Owner and the Principal shall abridge the right of any beneficiary hereunder, whose claim may be unsatisfied.

IN WITNESS WHEREOF, this instrument is executed in five (5) counterparts, each one of which shall be deemed and original, this the _____ day of _____, 2022.

ATTEST:

(Principal's Corporate Secretary)

(Principal)

Affix CORPORATE SEAL if applicable

(Address-Zip Code)

(Witness as to Principal)

(Address-Zip Code)

(Surety)

ATTEST:

By: _____
(Attorney-in-Fact)

(Surety) Secretary

(Address-Zip Code)

(Affix SURETY'S SEAL)

(Witness as to Surety)

(Address-Zip Code)

Notes:

If Principal is Partnership, all partners must execute bond. The Attorney-in-Fact, who executes this bond on behalf of the Surety, must attach a copy of her Power-of-Attorney as evidence of her authority.

ADDENDA ACKNOWLEDGMENT

Project Name: _____

I hereby acknowledge addenda numbers:

_____	_____
_____	_____
_____	_____

Name of Firm: _____

Signature of Bidder: _____

Date: _____

This Acknowledgement must be included in the Bid/Proposal for the project if any Addenda are issued or the Bid/Proposal could be considered non-responsive.

EQUAL EMPLOYMENT OPPORTUNITY CLAUSE

During the performance of this contract, the contractor agrees to comply with OFCC Regulations 40 CFR 60.1.4 (1) through (7) as follows:

1. The contractor will not discriminate against any employee or applicant for employment because of race, color, religion, sex or national origin. The contractor will take affirmative action to ensure that applicants are employed, and that employees are treated during employment without regard to their race, color, religion, sex, or national origin. Such action shall include, but not be limited to the following: Employment, upgrading, demotion, or transfer, recruitment or recruitment advertising; layoff or termination; rates of pay or other forms of compensation; and selection for training, including apprenticeship. The contractor agrees to post in conspicuous places, available to employees and applicants for employment, notices to be provided by the contracting officer setting forth the provisions of this nondiscrimination clause.

2. The contractor will, in all solicitations or advertisements for employees placed by or on behalf of the contractor, state that all qualified applicants will receive consideration for employment without regard to race, color, religion, sex, or national origin.

1. The contractor will send to each labor union or representative of workers with whom he has a collective bargaining agreement or other contract or understanding, a notice to be provided by the agency contracting officer, advising the labor union or workers' representative of the contractor's commitments under Section 202 of Executive Order 11246 of September 24, 1965 and shall post copies of the notice in conspicuous places available to employees and applicants for employment.

2. The contractor will comply with all provisions of executive order 11246 of September 24, 1965 and of the rules, regulations, and relevant orders of the Secretary of Labor.

3. The contractor will furnish all information and reports required by Executive Order 11246 of September 24, 1965 and by the rules, regulations, and orders of the secretary of labor, or pursuant thereto, and will permit access of his books, records, and accounts by the contracting agency and the secretary of Labor for purposes of investigation to ascertain compliance with such rules, regulations, and orders.

4. In the event of the contractor's noncompliance with the nondiscrimination clauses of this contract or with any such rules, regulations or orders, this contract may be canceled, terminated or suspended in whole or in part and the contractor may be declared ineligible for further government contracts in accordance with procedures authorized in executive order 11246 of September 24, 1965 and such other sanctions may be imposed and remedies invoked as provided in executive order 11246 of September 24, 1965 or by rule, regulation or order of the Secretary of Labor as otherwise provided by law.

5. The contractor will include the provisions of paragraphs (1) through (7) in every subcontract or purchase order unless exempted by rules, regulations, or orders of the Secretary of Labor issued pursuant to section 204 of Executive Order 11246 of September 24, 1965 so that such provisions will be binding upon each subcontractor or vendor. The contractor will take such action with respect to any subcontract or purchase order as the contracting agency may direct as a means of enforcing such provisions including sanctions for noncompliance: Provided, however that in the event the contractor becomes involved in, or is threatened with litigation with a subcontractor or vendor as a result of such direction by the contracting

agency, the contractor may request the United States to enter into such litigation to protect the interest of the United States.

(Signature) _____

(Title) _____

(Date) _____

This form (2 pages) must be included with the Bid Part A, or the Bid will be considered non-responsive.

EQUAL EMPLOYMENT OPPORTUNITY EMPLOYER INFORMATION REPORT EEO-1

Section A - TYPE OF REPORT	Refer to
Instructions for number and types of reports to be filed.	

1. Indicate by marking in the appropriate box the type of reporting unit for which this copy of the form is submitted (MARK ONLY ONE BOX)

<p>1 <input type="checkbox"/> Single-establishment Employer Report</p>	<p>Multi-establishment Employer:</p> <p>2 <input type="checkbox"/> Consolidated Report (Required)</p> <p>3 <input type="checkbox"/> Headquarters Unit Report (Required)</p> <p>4 <input type="checkbox"/> Individual Establishment Report (submit one for each establishment with 50 or more employees)</p> <p>5 <input type="checkbox"/> Special Report</p>
--	---

2. Total number of reports being filed by this Company (answer on Consolidated Report only)

Section B - COMPANY IDENTIFICATION (To be answered by all employers)

1. Parent Company	OFFICE USE ONLY
a. Name of parent company (owns or controls establishment in item 2) omit if same as label	a.
Address (Number and street)	b.
City or Town	c.
State	
ZIP Code	
2. Establishment for which this report is filed (Omit if same as label)	
a. Name of establishment	d.
Address (Number and Street)	e.
City or Town	
County	
State	
ZIP Code	
b. Employer Identification No. (IRS 9 DIGIT TAX NUMBER)	f.
c. Was an EEO-1 report filed for this establishment last year? <input type="checkbox"/> Yes <input type="checkbox"/> No	

Section C - EMPLOYERS WHO ARE REQUIRED TO FILE (To be answered by all employers)

Yes No 1. Does the entire company have at least 100 employees in the payroll period for which you are reporting?

Yes No 2. Is your company affiliated through common ownership and/or centralized management with other entities in an enterprise with a total employment of 100 or more?

Yes No 3. Does the company or any of its establishments (a) have 50 or more employees AND (b) is not exempt as provided by 41 CFR 60-1. 5. AND either (1) is a prime government contractor or first -tier subcontractor, and has a contract, subcontract, or purchase order amounting to \$50,000 or more, or (2) serves as a depository of Government funds in any amount or is a financial institution which is issuing and paying agent for U.S. Savings Bonds and Savings Notes?

DUNS #: _____

→ If the response to question C-3 is yes, please enter your Dun & Bradstreet Identification number (if you have one):

NOTE: If the answer is yes to questions 1, 2, or 3 complete the entire form, otherwise skip to Section G.

Section D - EMPLOYMENT DATA

Employment at this establishment - Report all permanent full and part-time employees including apprentices and on the job trainees unless specifically excluded as set forth in the instructions. Enter the appropriate figures on all the lines and in all columns. Blank spaces will be considered as zeros.

Job Categories	Number of Employees(Report employees in only one category)														
	Race/Ethnicity														Total Col A-N
	Hispanic or Latino		Not Hispanic or Latino												
			Male						Female						
Male	Female	White	Black or African American	Native Hawaiian or Other Pacific Islander	Asian	American Indian or Alaska Native	Two or More Races	White	Black or African American	Native Hawaiian or Other Pacific Islander	Asian	American Indian or Alaska Native	Two or more races		
A	B	c	D	E	F	G	H	I	J	K	L	M	N	O	
Executive /Senior Level Officials and Managers 1.1															
First/Mid-Level Officials and Managers 1.2															
Professionals 2															
Technicians 3															
Sales Workers 4															
Administrative Support Workers 5															
Craft Workers 6															
Operatives 7															
Laborers and Helpers 8															
Service Workers 9															
TOTAL 10															
PREVIOUS YEAR 11															

1. Date(s) of payroll period used: (Omit on the Consolidated Report.)

Section E - ESTABLISHMENT INFORMATION (Omit on the Consolidated Report)

1. What is the major activity of this establishment? (Be specific, i.e., manufacturing steel casings, retail grocer, wholesale plumbing supplies, title insurance, etc. Include the specific type of product or type of service provided, as well as the principal business or industrial activity.)

Section F - REMARKS

Use this item to give any identification data appearing on the last EEO-1 report which differs from that given above, explain major changes in composition of reporting units and other pertinent information.

Check One All reports are accurate and were prepared in accordance with the instructions. (Check on Consolidated Report only.)
 This report is accurate and was prepared in accordance with the instructions.

Name of Certifying Official	Title	Signature	Date
-----------------------------	-------	-----------	------

Name of person to contact regarding this report	Title	Address (Number and Street)
---	-------	-----------------------------

City and State	Zip Code	Telephone No. (including Area Code and Extension)	Email Address
----------------	----------	---	---------------

**CONTRACTOR'S QUESTIONNAIRE
NOTICE TO CONTRACTORS**

Prior to Award, this questionnaire shall be completely filled out for the project upon which a bid is submitted.

A. FINANCIAL

1. Have you ever failed to complete a contract on account of insufficient resources?

2. Have you made sufficient arrangements to finance the work? _____

If so, with whom and for what amount? _____

If so, with what company? _____

B. EQUIPMENT

1. Set forth below the equipment which you have available for the work, which you propose to do. This equipment should be listed in detail (General statements will not be accepted).

NO.	ITEMS	TYPE	SIZE/CAPACITY	PRESENT VALUE

2. Do you thoroughly understand that in case the contract is awarded to you, you may be required to use any or all of the equipment listed on the work covered by this contract?

3. Do you propose to purchase any equipment for use on this project should the contract be awarded to you? If so, state type, quantity and approximate cost.

4. Do you propose to rent any equipment for this work? _____
If so, state type, quantity, and reason for renting. _____

5. Have you made contracts or received firm offers for all necessary materials with the prices used in preparing your proposal? _____

6. Do you intend to plan to subcontract any of the work? _____
If so, what types or portions of the work. _____

Approximate value \$ _____ Percent of total bid _____

C. EXPERIENCE

1. How many years has your organization been in business as a general contractor under your present business name? _____

2. How many years of experience in construction work has your organization had:

a) As a General Contractor _____.

b) As a Subcontractor _____.

3. List previous contracts you have completed of a similar nature to this proposed contract:

a) _____

b) _____

c) _____

d) _____

e) _____

4. List projects which you currently have under contract or expect to have under contract during the life of this contract:

a) _____

b) _____

c) _____

Use additional sheets as necessary.

5. List your staff you plan to use on this project and the position they will fill for this project (include managerial and clerical personnel that will provide support services).

STAFF MEMBER

POSITION

Signature: _____

Title: _____



MINIMUM RATES OF PAY For Laborers and Mechanics

Effective April 1, 2023

Issue 46

PAMPHLET No. 600

Title 36. Public Contracts
AS 36.05

**DEPARTMENT OF LABOR
AND WORKFORCE DEVELOPMENT**

Wage and Hour

- This page intentionally left blank -



April 1, 2023

TO ALL CONTRACTING AGENCIES:

At the Alaska Department of Labor and Workforce Development our goal is putting Alaskans to work. This pamphlet is designed to help contractors awarded public construction contracts understand the most significant laws of the State of Alaska pertaining to prevailing wage.

This pamphlet identifies current prevailing wage rates for public construction contracts (any construction projects awarded for the State of Alaska or its political subdivisions, such as local governments and certain non-profit organizations). Because these rates may change in a subsequent determination, please be sure you are using the appropriate rates. The rates published in this edition become effective April 1, 2023.

The prevailing wage rates contained in this pamphlet are applicable to public construction projects with a final bid date of April 11, 2023, or later. As the law now provides, these rates will remain stable during the life of a contract or for 24 calendar months, whichever is shorter. **The 24-month period begins on the date the prime contract is awarded.** Upon expiration of the initial 24-month period, the latest wage rates issued by the department shall become effective for a subsequent 24-month period or until the original contract is completed, whichever occurs first. This process shall be repeated until the original contract is completed.

The term "original contract" means the signed contract that resulted from the original bid and any amendments, including changes of work scope, additions, extensions, change orders, and other instruments agreed to by the parties that have not been subject to subsequent open bid procedures.

If a higher federal rate is required due to partial federal funding or other federal participation, the higher rate must be paid.

For additional copies of this pamphlet go to: <http://labor.state.ak.us/lss/pamp600.htm>

For questions regarding prevailing wage or employment preference requirements, please contact the nearest Wage and Hour office. These offices are listed on Page x.

Sincerely,

A handwritten signature in blue ink that reads "Catherine Muñoz".

Catherine Muñoz
Acting Commissioner

- This page intentionally left blank -

Table of Contents

Excerpts from Alaska Law

Sec. 36.05.005. Applicability.....	iv
Sec. 36.05.010. Wage rates on public construction.	iv
Sec. 36.05.040. Filing schedule of employees, wages paid and other information	iv
Sec. 36.05.045. Notice of work and completion; withholding of payment	iv
Sec. 36.05.060. Penalty for violation of this chapter	v
Sec. 36.05.070. Wage rates in specifications and contracts for public works	v
Sec. 36.05.080. Failure to pay agreed wages	v
Sec. 36.05.090. Payment of wages from withheld payments and listing contractors who violate contracts	v
Sec. 36.05.900. Definition.. ..	vi

Excerpts from Alaska Administrative Code

8 AAC 30.051. Purpose	vi
8 AAC 30.052. Board and lodging; remote sites	vi
8 AAC 30.054. Per diem instead of board and lodging	vi
8 AAC 30.056. Alternative arrangement.....	vii
8 AAC 30.900. General definitions (selected excerpts).....	vii

Additional Information

Per Diem	vii
Laborer Classification Clarification.....	viii
Apprentice Rates.....	viii
Fringe Benefit Plans.....	viii
Special Prevailing Wage Rate Determination.....	ix
Alaska Employment Preference Information.....	ix
Labor Standards and Safety Notice Requests	x
Debarment List	x

Wage Rates Pages 1-26

Shipyard Rate Addendum.....Pages 27

Note to Readers: The statutes and administrative regulations listed in this publication were taken from the official codes, as of the effective date of the publication. However, there may be errors or omissions that have not been identified and changes that occurred after the publication was printed. This publication is intended as an informational guide only and is not intended to serve as a precise statement of the statutes and regulations of the State of Alaska. To be certain of current laws and regulations, please refer to the official codes.

EXCERPTS FROM ALASKA LAW

Sec. 36.05.005. Applicability.

This chapter applies only to a public construction contract that exceeds \$25,000.

Sec. 36.05.010. Wage rates on public construction.

A contractor or subcontractor who performs work on a public construction contract in the state shall pay not less than the current prevailing rate of wages for work of a similar nature in the region in which the work is done. The current prevailing rate of wages is that contained in the latest determination of prevailing rate of wages issued by the Department of Labor and Workforce Development at least 10 days before the final date for submission of bids for the contract. The rate shall remain in effect for the life of the contract or for 24 calendar months, whichever is shorter. At the end of the initial 24-month period, if new wage determinations have been issued by the department, the latest wage determination shall become effective for the next 24-month period or until the contract is completed, whichever occurs first. This process shall be repeated until the contract is completed.

Sec. 36.05.040. Filing schedule of employees, wages paid, and other information.

All contractors or subcontractors who perform work on a public construction contract for the state or for a political subdivision of the state shall, before the Friday of every second week, file with the Department of Labor and Workforce Development a sworn affidavit for the previous reporting period, setting out in detail the number of persons employed, wages paid, job classification of each employee, hours worked each day and week, and other information on a form provided by the Department of Labor and Workforce Development.

Sec. 36.05.045. Notice of work and completion; withholding of payment.

- (a) Before commencing work on a public construction contract, the person entering into the contract with a contracting agency shall designate a primary contractor for purposes of this section. Before work commences, the primary contractor shall file a notice of work with the Department of Labor and Workforce Development. The notice of work must list work to be performed under the public construction contract by each contractor who will perform any portion of work on the contract and the contract price being paid to each contractor. The primary contractor shall pay all filing fees for each contractor performing work on the contract, including a filing fee based on the contract price being paid for work performed by the primary contractor's employees. The filing fee payable shall be the sum of all fees calculated for each contractor. The filing fee shall be one percent of each contractor's contract price. The total filing fee payable by the primary contractor under this subsection may not exceed \$5,000. In this subsection, "contractor" means an employer who is using employees to perform work on the public construction contract under the contract or a subcontract.
- (b) Upon completion of all work on the public construction contract, the primary contractor shall file with the Department of Labor and Workforce Development a notice of completion together with payment of any additional filing fees owed due to increased contract amounts. Within 30 days after the department's receipt of the primary contractor's notice of completion, the department shall inform the contracting agency of the amount, if any, to be withheld from the final payment.
- (c) A contracting agency
 - (1) may release final payment of a public construction contract to the extent that the agency has received verification from the Department of Labor and Workforce Development that
 - (A) the primary contractor has complied with (a) and (b) of this section;
 - (B) the Department of Labor and Workforce Development is not conducting an investigation under this title; and
 - (C) the Department of Labor and Workforce Development has not issued a notice of a violation of this chapter to the primary contractor or any other contractors working on the public construction contract; and

- (2) shall withhold from the final payment an amount sufficient to pay the department's estimate of what may be needed to compensate the employees of any contractors under investigation on this construction contract, and any unpaid filing fees.
- (d) The notice and filing fee required under (a) of this section may be filed after work has begun if
 - (1) The public construction contract is for work undertaken in immediate response to an emergency; and
 - (2) The notice and fees are filed not later than 14 days after the work has begun.
- (e) A false statement made on a notice required by this section is punishable under AS 11.56.210.

Sec. 36.05.060. Penalty for violation of this chapter.

A contractor who violates this chapter is guilty of a misdemeanor and upon conviction is punishable by a fine of not less than \$100 nor more than \$1,000, or by imprisonment for not less than 10 days nor more than 90 days, or by both. Each day a violation exists constitutes a separate offense.

Sec. 36.05.070. Wage rates in specifications and contracts for public works.

- (a) The advertised specifications for a public construction contract that requires or involves the employment of mechanics, laborers, or field surveyors must contain a provision stating the minimum wages to be paid various classes of laborers, mechanics, or field surveyors and that the rate of wages shall be adjusted to the wage rate under AS 36.05.010.
- (b) Repealed by §17 ch 142 SLA 1972.
- (c) A public construction contract under (a) of this section must contain provisions that
 - (1) the contractor or subcontractors of the contractor shall pay all employees unconditionally and not less than once a week;
 - (2) wages may not be less than those stated in the advertised specifications, regardless of the contractual relationship between the contractor or subcontractors and laborers, mechanics, or field surveyors;
 - (3) the scale of wages to be paid shall be posted by the contractor in a prominent and easily accessible place at the site of the work;
 - (4) the state or a political subdivision shall withhold so much of the accrued payments as is necessary to pay to laborers, mechanics, or field surveyors employed by the contractor or subcontractors the difference between
 - (A) the rates of wages required by the contract to be paid laborers, mechanics, or field surveyors on the work; and
 - (B) the rates of wages in fact received by laborers, mechanics, or field surveyors.

Sec. 36.05.080. Failure to pay agreed wages.

Every contract within the scope of AS 36.05.070 shall contain a provision that if it is found that a laborer, mechanic, or field surveyor employed by the contractor or subcontractor has been or is being paid a rate of wages less than the rate of wages required by the contract to be paid, the state or its political subdivision may, by written notice to the contractor, terminate the contractor's right to proceed with the work or the part of the work for which there is a failure to pay the required wages and to prosecute the work to completion by contract or otherwise, and the contractor and the contractor's sureties are liable to the state or its political subdivision for excess costs for completing the work.

Sec. 36.05.090. Payment of wages from withheld payments and listing contractors who violate contracts.

- (a) The state disbursing officer in the case of a state public construction contract and the local fiscal officer in the case of a political subdivision public construction contract shall pay directly to laborers, mechanics, or field surveyors from accrued payments withheld under the terms of the contract the wages due laborers, mechanics, or field surveyors under AS 36.05.070.
- (b) The state disbursing officer or the local fiscal officer shall distribute to all departments of the state government and to all political subdivisions of the state a list giving the names of persons who have disregarded their obligations to employees. A person appearing on this list and a firm, corporation, partnership, or association in which the person has an interest may not work as a contractor or

subcontractor on a public construction contract for the state or a political subdivision of the state until three years after the date of publication of the list. If the accrued payments withheld under the contract are insufficient to reimburse all the laborers, mechanics, or field surveyors with respect to whom there has been a failure to pay the wages required under AS 36.05.070, the laborers, mechanics, or field surveyors have the right of action or intervention or both against the contractor and the contractor's sureties conferred by law upon persons furnishing labor or materials, and in the proceedings it is not a defense that the laborers, mechanics, or field surveyors accepted or agreed to accept less than the required rate of wages or voluntarily made refunds.

Sec. 36.05.900. Definition.

In this chapter, "contracting agency" means the state or a political subdivision of the state that has entered into a public construction contract with a contractor.

EXCERPTS FROM ALASKA ADMINISTRATIVE CODE

*****Notice:** Regulations relating to board and lodging and per diem went into effect on November 25, 2018. The new regulations are excerpted here***

8 AAC 30.051. Purpose. The purpose of 8 AAC 30.052 – 8 AAC 30.056 is to ensure that wages paid to laborers, mechanics, and field surveyors do not fall below the prevailing rate of pay.

8 AAC 30.052. Board and lodging; remote sites. (a) A contractor on a public construction project located 65 or more road miles from the international airport closest to the project area in either Fairbanks, Juneau, or Anchorage, or that is inaccessible by road in a two-wheel drive vehicle, shall provide adequate board and lodging to each laborer, mechanic, or field surveyor while the person is employed on the project. If commercial lodging facilities are not available, the contractor shall provide temporary lodging facilities. Lodging facilities must comply with all applicable state and federal laws. For a highway project, the location of the project is measured from the midpoint of the project.

(b) A contractor is not required to provide board and lodging:

(1) to a laborer, mechanic, or field surveyor who is a domiciled resident of the project area; or

(2) on a laborer, mechanic, or field surveyor's scheduled days off, when the person can reasonably travel between the project and the person's permanent residence; for the purposes of this paragraph, "scheduled day off" means a day in which a person does not perform work on-site, is not required to remain at or near the job location for the benefit of the contractor, and is informed of the day off at least seven days before the day off.

(c) Upon a contractor's written request, the commissioner may waive the requirements of (a) of this section where:

(1) the project is inaccessible by road in a two-wheel drive vehicle, but the laborer, mechanic, or field surveyor can reasonably travel between the project and the person's permanent residence within one hour; or

(2) a laborer, mechanic, or field surveyor is not a domiciled resident of the project area, but has established permanent residence, with the intent to remain indefinitely, within 65 road miles of the project, or for a highway project, the mid-point of the project.

8 AAC 30.054. Per diem instead of board and lodging. (a) A contractor may pay a laborer, mechanic, or field surveyor per diem instead of providing board and lodging, when the following conditions are met:

(1) the department determines that per diem instead of board and lodging is an established practice for the work classification; the department shall publish and periodically revise its determinations in the pamphlet *Laborers and Mechanics Minimum Rates of Pay*;

(2) the contractor pays each laborer, mechanic, or field surveyor the appropriate per diem rate as published and periodically revised in the pamphlet *Laborers and Mechanics Minimum Rates of Pay*; and

(3) the contractor pays the per diem to each laborer, mechanic, or field surveyor on the same day that wages are paid.

(b) A contractor may not pay per diem instead of board and lodging on a highway project located

- (1) west of Livengood on the Elliot Highway, AK-2;
- (2) on the Dalton Highway, AK-11;
- (3) north of milepost 20 on the Taylor Highway, AK-5;
- (4) east of Chicken on the Top of the World Highway; or
- (5) south of Tetlin Junction to the Alaska-Canada border on the Alaska Highway, AK-2.

8 AAC 30.056. Alternative arrangement. Upon a contractor’s written request, the commissioner may approve an alternative board and lodging or per diem arrangement, provided

- (1) the arrangement does not reduce the laborer, mechanic, or field surveyor’s wages below the prevailing wage rate; and
- (2) the laborer, mechanic, or field surveyor voluntarily enters into and signs the written arrangement; a labor organization representing laborers, mechanics, or field surveyors may enter into the written agreement on their behalf.

8 AAC 30.900. General definitions (selected excerpts only):

In this chapter and in AS 36

(22) “domiciled resident” means a person living within 65 road miles of a public construction project, or in the case of a highway project, the mid-point of the project, for at least 12 consecutive months prior to the award of the public construction project;

(23) “employed on the project” means the time period from the date the laborer, mechanic, or field surveyor first reports on-site to the project through the final date the person reports on-site to the project.

ADDITIONAL INFORMATION

PER DIEM

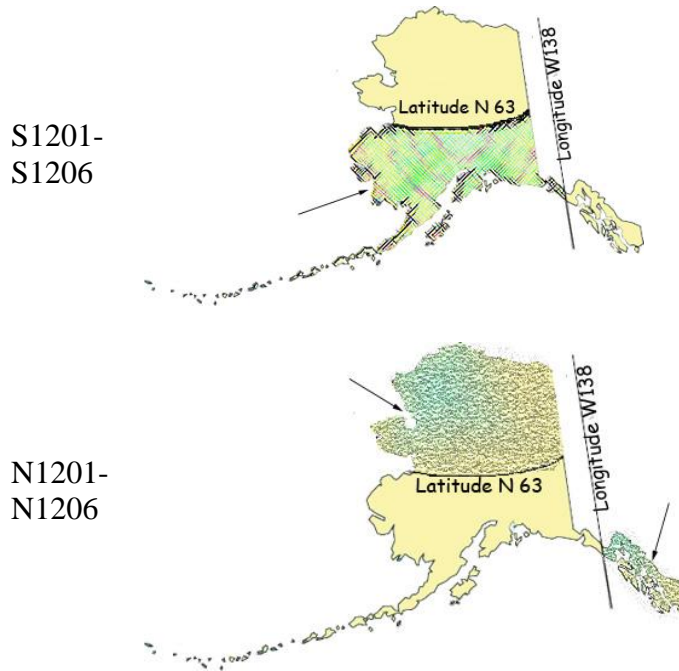
Notice: New regulations relating to board and lodging and per diem went into effect on November 25, 2018. The regulations provide a comprehensive set of requirements for the provision of board and lodging or per diem for workers on remote projects. Please refer to Alaska Administrative Code 8 AAC Chapter 30 and read the chapter carefully.

The Alaska Department of Labor and Workforce Development has determined that per diem is an established work practice for certain work classifications. These classifications are indicated throughout the Pamphlet by an asterisk (*) under the classification title. If all of the conditions of 8 AAC 30.054 are met, an employer may pay workers in these classifications per diem instead of providing board and lodging on a remote project.

Per Diem Rate: As of May 1st, 2019, the minimum per diem rate is \$100.00 per day, or part thereof, the worker is employed on the project. In the event that a contractor provides lodging facilities, but no meals, the department will accept a payment of \$48 per day for meals to meet the per diem requirements.

LABORER CLASSIFICATION CLARIFICATION

The laborer rates categorized in class code S1201-S1206 apply in one area of Alaska; the area that is south of N63 latitude and west of W138 Longitude. The laborer rates categorized in class code N1201-N1206 apply in two areas of Alaska; the Alaska areas north of N63 latitude and east of W138 longitude. The following graphic representations should assist with clarifying the applicable wage rate categories:



APPRENTICE RATES

Apprentice rates at less than the minimum prevailing rates may be paid to apprentices according to an apprentice program which has been registered and approved by the Commissioner of the Alaska Department of Labor and Workforce Development in writing or according to a bona fide apprenticeship program registered with the U.S. Department of Labor, Office of Apprenticeship Training. **Any employee listed on a payroll at an apprentice wage rate who is not registered as above shall be paid the journeyman prevailing minimum wage in that work classification.** Wage rates are based on prevailing crew makeup practices in Alaska and apply to work performed regardless of either the quality of the work performed by the employee or the titles or classifications which may be assigned to individual employees.

FRINGE BENEFIT PLANS

Contractors/subcontractors may compensate fringe benefits to their employees in any one of three methods. The fringe benefits may be paid into a union trust fund, into an approved benefit plan, or paid directly on the paycheck as gross wages.

Where fringe benefits are paid into approved plans, funds, or programs including union trust funds, the payments must be contributed at least monthly. If contractors submit their own payroll forms and are paying fringe benefits into approved plans, funds, or programs, the employer’s certification must include, in addition to those requirements of 8 AAC 30.020(c), a statement that fringe benefit payments have been or will be paid at least monthly. Contractors who pay fringe benefits to a plan must ensure the plan is one approved by the Internal Revenue Service and that the plan meets the requirements of 8 AAC 30.025 (eff. 3/2/08) in order for payments to be credited toward the prevailing wage obligation.

SPECIAL PREVAILING WAGE RATE DETERMINATION

Special prevailing wage rate determinations may be requested for special projects or a special worker classification if the work to be performed does not conform to traditional public construction for which a prevailing wage rate has been established under 8 AAC 30.050(a) of this section. Requests for special wage rate determinations must be in writing and filed with the Commissioner at least 30 days before the award of the contract. An applicant for a special wage rate determination shall have the responsibility to support the necessity for the special rate. An application for a special wage rate determination filed under this section must contain:

- (1) a specification of the contract or project on which the special rates will apply and a description of the work to be performed;
- (2) a brief narrative explaining why special wage rates are necessary;
- (3) the job class or classes involved;
- (4) the special wage rates the applicant is requesting, including survey or other relevant wage data to support the requested rates;
- (5) the approximate number of employees who would be affected; and
- (6) any other information which might be helpful in determining if special wage rates are appropriate.

Requests made pursuant to the above should be addressed to:

Director
Alaska Department of Labor and Workforce Development
Labor Standards and Safety Division
Wage and Hour
P.O. Box 111149
Juneau, AK 99811-1149
-or-
Email: statewide.wagehour@alaska.gov

EMPLOYMENT PREFERENCE INFORMATION

In October 2019, the Alaska Attorney General issued a formal opinion stating that the Alaska Statutes 36.10.150 of the State’s 90% Employment Preference law, also known as the Alaska Resident Hire law, violates both the U.S. and Alaska Constitutions. As a result, the state has stopped all enforcement activity. A copy of the Attorney General opinion is found here:

http://law.alaska.gov/pdf/opinions/opinions_2019/19-005_AK-hire.pdf

**Alaska Department of Labor and Workforce Development
Labor Standards and Safety Division
Wage and Hour**

Web site: <http://labor.state.ak.us/lss/pamp600.htm>

Anchorage

1251 Muldoon Road, Suite 113
Anchorage, Alaska 99504-2098
Phone: (907) 269-4900

Email:
statewide.wagehour@alaska.gov

Juneau

PO Box 111149
Juneau, Alaska 99811
Phone: (907) 465-4842

Email:
statewide.wagehour@alaska.gov

Fairbanks

Regional State Office Building
675 7th Ave., Station J-1
Fairbanks, Alaska 99701-4593
Phone: (907) 451-2886

Email:
statewide.wagehour@alaska.gov

LABOR STANDARDS AND SAFETY NOTICE REQUESTS

If you would like to receive Wage and Hour or Mechanical Inspection **regulation notices** or **publications information**, they are available via electronic mail, by signing up in the GovDelivery System, <https://public.govdelivery.com/accounts/AKDOL/subscriber/new> and selecting topics *LSS – Wage and Hour – Forms and Publications*, *LSS – Mechanical Inspection Regulations*, or *LSS – Wage and Hour Regulations*.

Publications are also available online at <http://labor.alaska.gov/lss/home.htm>

DEBARMENT LIST

AS 36.05.090(b) states that “the state disbursing officer or the local fiscal officer shall distribute to all departments of the state government and to all political subdivisions of the state a list giving the names of persons who have disregarded their obligations to employees.”

A person appearing on the following debarment list and a firm, corporation, partnership, or association in which the person has an interest may not work as a contractor or subcontractor on a public construction contract for the state or a political subdivision of the state for three years from the date of debarment.

Company Name

Debarment Expires

No companies are currently debarred.

Laborers' & Mechanics' Minimum Rates of Pay

Class Code	Classification of Laborers & Mechanics	BHR	H&W	PEN	TRN	Other	Benefits	THR
------------	--	-----	-----	-----	-----	-------	----------	-----

Boilermakers

*See per diem note on last page

A0101	Boilermaker (journeyman)	48.15	8.57	18.40	2.15	VAC	SAF	81.86
						4.25	0.34	

Bricklayers & Blocklayers

*See per diem note on last page

A0201	Blocklayer	42.01	9.00	10.20	0.62	L&M		62.03
						0.20		

Bricklayer
 Marble or Stone Mason
 Refractory Worker (Firebrick, Plastic, Castable, and Gunitite Refractory Applications)
 Terrazzo Worker
 Tile Setter

A0202	Tuck Pointer Caulker	42.01	9.00	10.20	0.62	L&M		62.03
						0.20		

Cleaner (PCC)

A0203	Marble & Tile Finisher	35.84	9.00	10.20	0.62	L&M		55.86
						0.20		

Terrazzo Finisher

A0204	Torginal Applicator	35.84	9.00	10.20	0.62	L&M		55.86
						0.20		

Carpenters, Region I (North of 63 latitude)

*See per diem note on last page

N0301	Carpenter (journeyman)	43.34	10.35	15.82	1.75	L&M	SAF	71.66
						0.20	0.20	

Lather/Drywall/Acoustical

Carpenters, Region II (South of N63 latitude)

*See per diem note on last page

S0301	Carpenter (journeyman)	43.34	10.35	16.36	1.75	L&M	SAF	72.20
						0.20	0.20	

Lather/Drywall/Acoustical

Cement Masons

*See per diem note on last page

Wage benefits key: BHR=basic hourly rate; H&W=health and welfare; IAF=industry advancement fund; LEG=legal fund; L&M=labor/management fund; PEN=pension fund; SAF=safety; SUI=supplemental unemployment insurance; S&L=SUI & LEG combined; TRN=training; THR=total hourly rate; VAC=vacation

Cement Masons
 *See per diem note on last page

						L&M	
A0401	Group I, including:	44.43	8.80	11.80	1.53	0.10	66.66
	Application of Sealing Compound						
	Application of Underlayment						
	Building, General						
	Cement Finisher						
	Cement Mason (journeyman)						
	Concrete						
	Concrete Paving						
	Concrete Polishing						
	Concrete Repair						
	Curb & Gutter, Sidewalk						
	Curing of All Concrete						
	General Concrete Pour Tender						
	Grouting & Caulking of Tilt-Up Panels						
	Grouting of All Plates						
	Patching Concrete						
	Screed Pin Setter						
	Screeder or Rodder						
	Spackling/Skim Coating						

A0402	Group II, including:	44.43	8.80	11.80	1.53	0.10	66.66
--------------	----------------------	-------	------	-------	------	------	-------

Form Setter

						L&M	
A0403	Group III, including:	44.43	8.80	11.80	1.53	0.10	66.66

- Concrete Saw Cutter Operator (All Control Joints and Self-powered)
- Curb & Gutter Machine
- Floor Grinder
- Pneumatic Power Tools
- Power Chipping & Bushing
- Sand Blasting Architectural Finish
- Screed & Rodding Machine Operator
- Troweling Machine Operator (all concrete surfaces)

						L&M	
A0404	Group IV, including:	44.43	8.80	11.80	1.53	0.10	66.66

- Acoustical or Imitation Acoustical Finish
- Application of All Composition Mastic
- Application of All Epoxy Material
- Application of All Plastic Material
- Finish Colored Concrete
- Gunite Nozzleman
- Hand Powered Grinder

Wage benefits key: BHR=basic hourly rate; H&W=health and welfare; IAF=industry advancement fund; LEG=legal fund; L&M=labor/management fund; PEN=pension fund; SAF=safety; SUI=supplemental unemployment insurance; S&L=SUI & LEG combined; TRN=training; THR=total hourly rate; VAC=vacation

Class Code	Classification of Laborers & Mechanics	BHR	H&W	PEN	TRN	Other	Benefits	THR
------------	--	-----	-----	-----	-----	-------	----------	-----

Cement Masons
*See per diem note on last page

A0404	Group IV, including:	44.43	8.80	11.80	1.53		L&M 0.10	66.66
	Preparing, scratching and browsing of all ceilings and walls, finished with terrazo or tile							
	Tunnel Worker							

A0405	Group V, including:	44.43	8.80	11.80	1.53		L&M 0.10	66.66
	Casting and finishing							
	EIFS Systems							
	Finishing of all interior and exterior plastering							
	Fireproofing (Pryocrete, Cafco, Albi-Clad, sprayed fiberglass)							
	Gypsum, Portland Cement							
	Kindred material and products							
	Operation and control of all types of plastering machines, including power tools and floats, used by the industry							
	Overcoating and maintenance of interior/exterior plaster surfaces							
	Plasterer							
	Veneer plastering process (Rapid Plaster, U.S.G. "Imperial Systems", and Pabcoat Systems")							
	Venetian plaster and color-integrated Italian/Middle-Eastern line plaster							

Culinary Workers

A0501	Baker/Cook	29.95	7.53	8.68			LEG	46.16
A0503	General Helper	25.82	7.53	8.68			LEG	42.03
	Housekeeper							
	Janitor							
	Kitchen Helper							
A0504	Head Cook	29.95	7.53	8.68			LEG	46.16
A0505	Head Housekeeper	26.20	7.53	8.68			LEG	42.41
	Head Kitchen Help							

Dredgemen
*See per diem note on last page

A0601	Assistant Engineer	46.91	11.40	14.75	1.00		L&M 0.10	0.05	74.21
	Craneman								

Wage benefits key: BHR=basic hourly rate; H&W=health and welfare; IAF=industry advancement fund; LEG=legal fund; L&M=labor/management fund; PEN=pension fund; SAF=safety; SUI=supplemental unemployment insurance; S&L=SUI & LEG combined; TRN=training; THR=total hourly rate; VAC=vacation

Class Code	Classification of Laborers & Mechanics	BHR	H&W	PEN	TRN	Other	Benefits	THR
------------	--	-----	-----	-----	-----	-------	----------	-----

Dredgemen
*See per diem note on last page

A0601	Assistant Engineer	46.91	11.40	14.75	1.00	L&M		74.21
	Electrical Generator Operator (primary pump/power barge/dredge)					0.10	0.05	
	Engineer							
	Welder							
A0602	Assistant Mate (deckhand)	45.65	11.40	14.75	1.00	L&M		72.95
						0.10	0.05	
A0603	Fireman	46.13	11.40	14.75	1.00	L&M		73.43
						0.10	0.05	
A0605	Leverman Clamshell	49.64	11.40	14.75	1.00	L&M		76.94
						0.10	0.05	
A0606	Leverman Hydraulic	47.74	11.40	14.75	1.00	L&M		75.04
						0.10	0.05	
A0607	Mate & Boatman	46.91	11.40	14.75	1.00	L&M		74.21
						0.10	0.05	
A0608	Oiler (dredge)	46.13	11.40	14.75	1.00	L&M		73.43
						0.10	0.05	

Electricians
*See per diem note on last page

A0701	Inside Cable Splicer	44.44	14.40	14.22	0.95	L&M		LEG	74.41
						0.25	0.15		
A0702	Inside Journeyman Wireman, including:	44.44	14.40	14.22	0.95	L&M		LEG	74.41
	Technicians (including use of drones in electrical construction)					0.25	0.15		
A0703	Power Cable Splicer	65.19	14.40	19.15	0.95	L&M		LEG	100.09
						0.25	0.15		
A0704	Tele Com Cable Splicer	52.53	14.40	17.98	0.95	L&M		LEG	86.26
						0.25	0.15		
A0705	Power Journeyman Lineman, including:	63.44	14.40	19.09	0.95	L&M		LEG	98.28
	Power Equipment Operator								
	Technician (including use of drones in electrical construction)					0.25	0.15		
A0706	Tele Com Journeyman Lineman, including:	50.78	14.40	17.92	0.95	L&M		LEG	84.45
	Technician (including use of drones in telecommunications construction)					0.25	0.15		
	Tele Com Equipment Operator								

Wage benefits key: BHR=basic hourly rate; H&W=health and welfare; IAF=industry advancement fund; LEG=legal fund; L&M=labor/management fund; PEN=pension fund; SAF=safety; SUI=supplemental unemployment insurance; S&L=SUI & LEG combined; TRN=training; THR=total hourly rate; VAC=vacation

Class Code	Classification of Laborers & Mechanics	BHR	H&W	PEN	TRN	Other	Benefits	THR
------------	--	-----	-----	-----	-----	-------	----------	-----

Electricians
*See per diem note on last page

A0707	Straight Line Installer - Repairman	50.78	14.40	17.92	0.95	L&M	LEG	84.45
A0708	Powderman	61.44	14.40	19.03	0.95	L&M	LEG	96.22
A0710	Material Handler	28.07	14.02	5.84	0.15	L&M	LEG	48.38
A0712	Tree Trimmer Groundman	31.78	14.40	14.30	0.15	L&M	LEG	60.93
A0713	Journeyman Tree Trimmer	40.71	14.40	14.57	0.15	L&M	LEG	70.13
A0714	Vegetation Control Sprayer	44.26	14.40	14.68	0.15	L&M	LEG	73.79
A0715	Inside Journeyman Communications CO/PBX	44.44	14.40	14.22	0.95	L&M	LEG	74.41

Elevator Workers
*See per diem note on last page

A0802	Elevator Constructor	46.08	16.07	20.56	0.70	L&M	VAC	89.52
A0803	Elevator Constructor Mechanic	65.83	16.07	20.56	0.70	L&M	VAC	111.46

Heat & Frost Insulators/Asbestos Workers
*See per diem note on last page

A0902	Asbestos Abatement-Mechanical Systems	41.35	9.24	11.12	1.50	IAF	LML	63.40
A0903	Asbestos Abatement/General Demolition All Systems	41.35	9.24	11.12	1.50	IAF	LML	63.40
A0904	Insulator, Group II	41.35	9.24	11.12	1.50	IAF	LML	63.40
A0905	Fire Stop	41.35	9.24	11.12	1.50	IAF	LML	63.40

IronWorkers
*See per diem note on last page

A1101	Ironworkers, including:	41.49	9.91	24.95	0.77	L&M	IAF	77.56
--------------	-------------------------	-------	------	-------	------	----------------	------------	-------

Wage benefits key: BHR=basic hourly rate; H&W=health and welfare; IAF=industry advancement fund; LEG=legal fund; L&M=labor/management fund; PEN=pension fund; SAF=safety; SUI=supplemental unemployment insurance; S&L=SUI & LEG combined; TRN=training; THR=total hourly rate; VAC=vacation

IronWorkers
 *See per diem note on last page

						L&M	IAF	
A1101	Ironworkers, including:	41.49	9.91	24.95	0.77	0.20	0.24	77.56
	Bender Operators							
	Bridge & Structural							
	Hangar Doors							
	Hollow Metal Doors							
	Industrial Doors							
	Machinery Mover							
	Ornamental							
	Reinforcing							
	Rigger							
	Sheeter							
	Signalman							
	Stage Rigger							
	Toxic Haz-Mat Work							
	Welder							

						L&M	IAF	
A1102	Helicopter	42.49	9.91	24.95	0.77	0.20	0.24	78.56
	Helicopter (used for rigging and setting)							
	Tower (energy producing windmill type towers to include nacelle and blades)							

						L&M	IAF	
A1103	Fence/Barrier Installer	37.99	9.91	24.95	0.77	0.20	0.24	74.06

						L&M	IAF	
A1104	Guard Rail Layout Man	38.73	9.91	24.95	0.77	0.20	0.24	74.80

						L&M	IAF	
A1105	Guard Rail Installer	38.99	9.91	24.95	0.77	0.20	0.24	75.06

Laborers (The Alaska areas north of N63 latitude and east of W138 longitude)
 *See per diem note on last page

						L&M	LEG	
N1201	Group I, including:	36.00	9.55	21.16	1.65	0.30	0.20	68.86
	Asphalt Worker (shovelman, plant crew)							
	Brush Cutter							
	Camp Maintenance Laborer							
	Carpenter Tender or Helper							
	Choke Setter, Hook Tender, Rigger, Signalman							
	Concrete Labor (curb & gutter, chute handler, curing, grouting, screeding)							
	Crusher Plant Laborer							
	Demolition Laborer							

Wage benefits key: BHR=basic hourly rate; H&W=health and welfare; IAF=industry advancement fund; LEG=legal fund; L&M=labor/management fund; PEN=pension fund; SAF=safety; SUI=supplemental unemployment insurance; S&L=SUI & LEG combined; TRN=training; THR=total hourly rate; VAC=vacation

Laborers (The Alaska areas north of N63 latitude and east of W138 longitude)
 *See per diem note on last page

N1201	Group I, including:	36.00	9.55	21.16	1.65	L&M	LEG	68.86
--------------	---------------------	-------	------	-------	------	----------------	------------	-------

- Ditch Digger
- Dumpman
- Environmental Laborer (hazard/toxic waste, oil spill)
- Fence Installer
- Fire Watch Laborer
- Flagman
- Form Stripper
- General Laborer
- Guardrail Laborer, Bridge Rail Installer
- Hydro Seeder Nozzleman
- Laborer, Building
- Landscaper or Planter
- Laying of Mortarless Decorative Block (retaining walls, flowered decorative block 4 feet or less - highway or landscape work)
- Material Handler
- Pneumatic or Power Tools
- Portable or Chemical Toilet Serviceman
- Pump Man or Mixer Man
- Railroad Track Laborer
- Sandblast, Pot Tender
- Saw Tender
- Slurry Work
- Steam Cleaner Operator
- Steam Point or Water Jet Operator
- Storm Water Pollution Protection Plan Worker (SWPPP Worker - erosion and sediment control Laborer)
- Tank Cleaning
- Utiliwalk & Utilidor Laborer
- Watchman (construction projects)
- Window Cleaner

N1202	Group II, including:	37.00	9.55	21.16	1.65	L&M	LEG	69.86
--------------	----------------------	-------	------	-------	------	----------------	------------	-------

- Burning & Cutting Torch
- Cement or Lime Dumper or Handler (sack or bulk)
- Certified Erosion Sediment Control Lead (CESCL Laborer)
- Choker Splicer
- Chucktender (wagon, air-track & hydraulic drills)
- Concrete Laborer (power buggy, concrete saws, pumpcrete nozzleman, vibratorman)
- Culvert Pipe Laborer
- Cured Inplace Pipelayer

Wage benefits key: BHR=basic hourly rate; H&W=health and welfare; IAF=industry advancement fund; LEG=legal fund; L&M=labor/management fund; PEN=pension fund; SAF=safety; SUI=supplemental unemployment insurance; S&L=SUI & LEG combined; TRN=training; THR=total hourly rate; VAC=vacation

Laborers (The Alaska areas north of N63 latitude and east of W138 longitude)
 *See per diem note on last page

N1202 Group II, including:	37.00	9.55	21.16	1.65	L&M 0.30	LEG 0.20	69.86
-----------------------------------	-------	------	-------	------	------------------------	--------------------	-------

- Environmental Laborer (asbestos, marine work)
- Floor Preparation, Core Drilling
- Foam Gun or Foam Machine Operator
- Green Cutter (dam work)
- Gunite Operator
- Hod Carrier
- Jackhammer/Chipping Gun or Pavement Breaker
- Laser Instrument Operator
- Laying of Mortarless Decorative Block (retaining walls, flowered decorative block over 4 feet - highway or landscape work)
- Mason Tender & Mud Mixer (sewer work)
- Pilot Car
- Pipelayer Helper
- Plasterer, Bricklayer & Cement Finisher Tender
- Powderman Helper
- Power Saw Operator
- Railroad Switch Layout Laborer
- Sandblaster
- Scaffold Building & Erecting
- Sewer Caulker
- Sewer Plant Maintenance Man
- Thermal Plastic Applicator
- Timber Faller, Chainsaw Operator, Filer
- Timberman

N1203 Group III, including:	37.90	9.55	21.16	1.65	L&M 0.30	LEG 0.20	70.76
------------------------------------	-------	------	-------	------	------------------------	--------------------	-------

- Bit Grinder
- Camera/Tool/Video Operator
- Guardrail Machine Operator
- High Rigger & Tree Topper
- High Scaler
- Multiplate
- Plastic Welding
- Slurry Seal Squeegee Man
- Traffic Control Supervisor
- Welding Certified (in connection with laborer's work)

N1204 Group IIIA	41.78	9.55	21.16	1.65	L&M 0.30	LEG 0.20	74.64
-------------------------	-------	------	-------	------	------------------------	--------------------	-------

- Asphalt Raker, Asphalt Belly Dump Lay Down
- Drill Doctor (in the field)

Wage benefits key: BHR=basic hourly rate; H&W=health and welfare; IAF=industry advancement fund; LEG=legal fund; L&M=labor/management fund; PEN=pension fund; SAF=safety; SUI=supplemental unemployment insurance; S&L=SUI & LEG combined; TRN=training; THR=total hourly rate; VAC=vacation

Class Code	Classification of Laborers & Mechanics	BHR	H&W	PEN	TRN	Other	Benefits	THR
------------	--	-----	-----	-----	-----	-------	----------	-----

Laborers (The Alaska areas north of N63 latitude and east of W138 longitude)
 *See per diem note on last page

N1204	Group IIIA	41.78	9.55	21.16	1.65	L&M	LEG	74.64
--------------	------------	-------	------	-------	------	----------------	------------	-------

- Driller (including, but not limited to wagon drills, air-track drills, hydraulic drills)
- Pioneer Drilling & Drilling Off Tugger (all type drills)
- Pipelayers
- Powderman (Employee Possessor)
- Storm Water Pollution Protection Plan Specialist (SWPPP Specialist)
- Traffic Control Supervisor, DOT Qualified

N1205	Group IV	25.57	9.55	21.16	1.65	L&M	LEG	58.43
--------------	----------	-------	------	-------	------	----------------	------------	-------

- Final Building Cleanup
- Permanent Yard Worker

N1206	Group IIIB	47.36	5.50	21.16	1.65	L&M	LEG	76.17
--------------	------------	-------	------	-------	------	----------------	------------	-------

- Driller (including, but not limited to wagon drills, air-track drills, hydraulic drills)(over 5,000 hours)
- Federal Powderman (Responsible Person in Charge)
- Grade Checking (setting or transferring of grade marks, line and grade, GPS, drones)
- Pioneer Drilling & Drilling Off Tugger (all type drills)(over 5,000 hours)
- Stake Hopper

Laborers (The area that is south of N63 latitude and west of W138 longitude)
 *See per diem note on last page

S1201	Group I, including:	36.00	9.55	21.16	1.65	L&M	LEG	68.86
--------------	---------------------	-------	------	-------	------	----------------	------------	-------

- Asphalt Worker (shovelman, plant crew)
- Brush Cutter
- Camp Maintenance Laborer
- Carpenter Tender or Helper
- Choke Setter, Hook Tender, Rigger, Signalman
- Concrete Labor (curb & gutter, chute handler, curing, grouting, screeding)
- Crusher Plant Laborer
- Demolition Laborer
- Ditch Digger
- Dumpman
- Environmental Laborer (hazard/toxic waste, oil spill)
- Fence Installer
- Fire Watch Laborer
- Flagman

Wage benefits key: BHR=basic hourly rate; H&W=health and welfare; IAF=industry advancement fund; LEG=legal fund; L&M=labor/management fund; PEN=pension fund; SAF=safety; SUI=supplemental unemployment insurance; S&L=SUI & LEG combined; TRN=training; THR=total hourly rate; VAC=vacation

Laborers (The area that is south of N63 latitude and west of W138 longitude)

*See per diem note on last page

						L&M	LEG	
S1201	Group I, including:	36.00	9.55	21.16	1.65	0.30	0.20	68.86

- Form Stripper
- General Laborer
- Guardrail Laborer, Bridge Rail Installer
- Hydro Seeder Nozzleman
- Laborer, Building
- Landscaper or Planter
- Laying of Mortarless Decorative Block (retaining walls, flowered decorative block 4 feet or less - highway or landscape work)
- Material Handler
- Pneumatic or Power Tools
- Portable or Chemical Toilet Serviceman
- Pump Man or Mixer Man
- Railroad Track Laborer
- Sandblast, Pot Tender
- Saw Tender
- Slurry Work
- Steam Cleaner Operator
- Steam Point or Water Jet Operator
- Storm Water Pollution Protection Plan Worker (SWPPP Worker - erosion and sediment control Laborer)
- Tank Cleaning
- Utiliwalk & Utilidor Laborer
- Watchman (construction projects)
- Window Cleaner

						L&M	LEG	
S1202	Group II, including:	37.00	9.55	21.16	1.65	0.30	0.20	69.86

- Burning & Cutting Torch
- Cement or Lime Dumper or Handler (sack or bulk)
- Certified Erosion Sediment Control Lead (CESCL Laborer)
- Choker Splicer
- Chucktender (wagon, air-track & hydraulic drills)
- Concrete Laborer (power buggy, concrete saws, pumpcrete nozzleman, vibratorman)
- Culvert Pipe Laborer
- Cured Inplace Pipelayer
- Environmental Laborer (asbestos, marine work)
- Floor Preparation, Core Drilling
- Foam Gun or Foam Machine Operator
- Green Cutter (dam work)
- Gunite Operator
- Hod Carrier

Wage benefits key: BHR=basic hourly rate; H&W=health and welfare; IAF=industry advancement fund; LEG=legal fund; L&M=labor/management fund; PEN=pension fund; SAF=safety; SUI=supplemental unemployment insurance; S&L=SUI & LEG combined; TRN=training; THR=total hourly rate; VAC=vacation

Laborers (The area that is south of N63 latitude and west of W138 longitude)

*See per diem note on last page

						L&M	LEG	
S1202	Group II, including:	37.00	9.55	21.16	1.65	0.30	0.20	69.86

- Jackhammer/Chipping Gun or Pavement Breaker
- Laser Instrument Operator
- Laying of Mortarless Decorative Block (retaining walls, flowered decorative block over 4 feet - highway or landscape work)
- Mason Tender & Mud Mixer (sewer work)
- Pilot Car
- Pipelayer Helper
- Plasterer, Bricklayer & Cement Finisher Tender
- Powderman Helper
- Power Saw Operator
- Railroad Switch Layout Laborer
- Sandblaster
- Scaffold Building & Erecting
- Sewer Caulker
- Sewer Plant Maintenance Man
- Thermal Plastic Applicator
- Timber Faller, Chainsaw Operator, Filer
- Timberman

						L&M	LEG	
S1203	Group III, including:	37.90	9.55	21.16	1.65	0.30	0.20	70.76

- Bit Grinder
- Camera/Tool/Video Operator
- Guardrail Machine Operator
- High Rigger & Tree Topper
- High Scaler
- Multiplate
- Plastic Welding
- Slurry Seal Squeegee Man
- Traffic Control Supervisor
- Welding Certified (in connection with laborer's work)

						L&M	LEG	
S1204	Group IIIA	41.78	9.55	21.16	1.65	0.30	0.20	74.64

- Asphalt Raker, Asphalt Belly Dump Lay Down
- Drill Doctor (in the field)
- Driller (including, but not limited to wagon drills, air-track drills, hydraulic drills)
- Pioneer Drilling & Drilling Off Tugger (all type drills)
- Pipelayers
- Powderman (Employee Possessor)
- Storm Water Pollution Protection Plan Specialist (SWPPP Specialist)

Wage benefits key: BHR=basic hourly rate; H&W=health and welfare; IAF=industry advancement fund; LEG=legal fund; L&M=labor/management fund; PEN=pension fund; SAF=safety; SUI=supplemental unemployment insurance; S&L=SUI & LEG combined; TRN=training; THR=total hourly rate; VAC=vacation

Class Code	Classification of Laborers & Mechanics	BHR	H&W	PEN	TRN	Other	Benefits	THR
------------	--	-----	-----	-----	-----	-------	----------	-----

Laborers (The area that is south of N63 latitude and west of W138 longitude)
 *See per diem note on last page

S1204	Group IIIA	41.78	9.55	21.16	1.65	L&M	LEG	74.64
	Traffic Control Supervisor, DOT Qualified							
S1205	Group IV	25.57	9.55	21.16	1.65	L&M	LEG	58.43
	Final Building Cleanup Permanent Yard Worker							
S1206	Group IIIB	47.36	5.50	21.16	1.65	L&M	LEG	76.17
	Driller (including, but not limited to wagon drills, air-track drills, hydraulic drills)(over 5,000 hours) Federal Powderman (Responsible Person in Charge) Grade Checking (setting or transferring of grade marks, line and grade, GPS, drones) Pioneer Drilling & Drilling Off Tugger (all type drills)(over 5,000 hours) Stake Hopper							

Millwrights
 *See per diem note on last page

A1251	Millwright (journeyman)	46.48	10.35	12.87	1.10	L&M		71.25
A1252	Millwright Welder	47.48	10.35	12.87	1.10	L&M		72.25

Painters, Region I (North of N63 latitude)
 *See per diem note on last page

N1301	Group I, including:	36.08	9.27	15.10	1.08	L&M		61.60
	Brush General Painter Hand Taping Hazardous Material Handler Lead-Based Paint Abatement Roll							
N1302	Group II, including:	36.60	9.27	15.10	1.08	L&M		62.12
	Bridge Painter Epoxy Applicator General Drywall Finisher Hand/Spray Texturing Industrial Coatings Specialist							

Wage benefits key: BHR=basic hourly rate; H&W=health and welfare; IAF=industry advancement fund; LEG=legal fund; L&M=labor/management fund; PEN=pension fund; SAF=safety; SUI=supplemental unemployment insurance; S&L=SUI & LEG combined; TRN=training; THR=total hourly rate; VAC=vacation

Painters, Region I (North of N63 latitude)

*See per diem note on last page

						L&M	
N1302	Group II, including:	36.60	9.27	15.10	1.08	0.07	62.12
	Machine/Automatic Taping						
	Pot Tender						
	Sandblasting						
	Specialty Painter						
	Spray						
	Structural Steel Painter						
	Wallpaper/Vinyl Hanger						

N1304	Group IV, including:	42.74	9.27	18.21	1.05	0.05	71.32
	Glazier						
	Storefront/Automatic Door Mechanic						

N1305	Group V, including:	39.86	9.27	5.00	1.10	0.10	55.33
	Carpet Installer						
	Floor Coverer						
	Heat Weld/Cove Base						
	Linoleum/Soft Tile Installer						

N1306	Group VI, including:	50.44	10.23	5.00	1.10	0.10	66.87
	Traffic Control Striper						

Painters, Region II (South of N63 latitude)

*See per diem note on last page

						L&M	
S1301	Group I, including :	33.22	9.27	15.95	1.08	0.07	59.59
	Brush						
	General Painter						
	Hand Taping						
	Hazardous Material Handler						
	Lead-Based Paint Abatement						
	Roll						
	Spray						

						L&M	
S1302	Group II, including :	34.47	9.27	15.95	1.08	0.07	60.84
	General Drywall Finisher						
	Hand/Spray Texturing						
	Machine/Automatic Taping						
	Wallpaper/Vinyl Hanger						

Wage benefits key: BHR=basic hourly rate; H&W=health and welfare; IAF=industry advancement fund; LEG=legal fund; L&M=labor/management fund; PEN=pension fund; SAF=safety; SUI=supplemental unemployment insurance; S&L=SUI & LEG combined; TRN=training; THR=total hourly rate; VAC=vacation

Class Code	Classification of Laborers & Mechanics	BHR	H&W	PEN	TRN	Other	Benefits	THR
------------	--	-----	-----	-----	-----	-------	----------	-----

Painters, Region II (South of N63 latitude)

*See per diem note on last page

S1303	Group III, including :	34.57	9.27	15.95	1.08		L&M 0.07	60.94
--------------	------------------------	-------	------	-------	------	--	------------------------	-------

- Bridge Painter
- Epoxy Applicator
- Industrial Coatings Specialist
- Pot Tender
- Sandblasting
- Specialty Painter
- Structural Steel Painter

S1304	Group IV, including:	42.95	9.27	17.25	1.08		L&M 0.07	70.62
--------------	----------------------	-------	------	-------	------	--	------------------------	-------

- Glazier
- Storefront/Automatic Door Mechanic

S1305	Group V, including:	39.86	9.27	5.00	1.10		L&M 0.10	55.33
--------------	---------------------	-------	------	------	------	--	------------------------	-------

- Carpet Installer
- Floor Coverer
- Heat Weld/Cove Base
- Linoleum/Soft Tile Installer

S1306	Group VI, including:	50.44	10.23	5.00	1.10		0.10	66.87
--------------	----------------------	-------	-------	------	------	--	------	-------

- Traffic Control Striper

Piledrivers

*See per diem note on last page

A1401	Piledriver	43.34	10.35	15.82	1.75		L&M 0.20	IAF 0.20	71.66
--------------	------------	-------	-------	-------	------	--	------------------------	--------------------	-------

- Assistant Dive Tender
- Carpenter/Piledriver
- Rigger
- Sheet Stabber
- Skiff Operator

A1402	Piledriver-Welder/Toxic Worker	44.34	10.35	15.82	1.75		L&M 0.20	IAF 0.20	72.66
--------------	--------------------------------	-------	-------	-------	------	--	------------------------	--------------------	-------

A1403	Remotely Operated Vehicle Pilot/Technician	47.65	10.35	15.82	1.75		L&M 0.20	IAF 0.20	75.97
--------------	--	-------	-------	-------	------	--	------------------------	--------------------	-------

- Single Atmosphere Suit, Bell or Submersible Pilot

A1404	Diver (working) **See note on last page	87.45	10.35	15.82	1.75		L&M 0.20	IAF 0.20	115.77
--------------	---	-------	-------	-------	------	--	------------------------	--------------------	--------

Wage benefits key: BHR=basic hourly rate; H&W=health and welfare; IAF=industry advancement fund; LEG=legal fund; L&M=labor/management fund; PEN=pension fund; SAF=safety; SUI=supplemental unemployment insurance; S&L=SUI & LEG combined; TRN=training; THR=total hourly rate; VAC=vacation

Class Code	Classification of Laborers & Mechanics	BHR	H&W	PEN	TRN	Other	Benefits	THR
------------	--	-----	-----	-----	-----	-------	----------	-----

Piledrivers
*See per diem note on last page

A1405	Diver (standby) **See note on last page	47.65	10.35	15.82	1.75	L&M	IAF	75.97
A1406	Dive Tender **See note on last page	46.65	10.35	15.82	1.75	L&M	IAF	74.97
A1407	Welder (American Welding Society, Certified Welding Inspector)	48.90	10.35	15.82	1.75	L&M	IAF	77.22

Plumbers, Region I (North of N63 latitude)
*See per diem note on last page

N1501	Journeyman Pipefitter	46.06	11.75	17.45	1.50	L&M	S&L	77.51
	Plumber							
	Welder							

Plumbers, Region II (South of N63 latitude)
*See per diem note on last page

S1501	Journeyman Pipefitter	41.00	11.88	15.27	1.55	L&M		69.90
	Plumber							
	Welder							

Plumbers, Region IIA (1st Judicial District)
*See per diem note on last page

X1501	Journeyman Pipefitter	41.50	13.67	11.75	2.70	L&M		69.86
	Plumber							
	Welder							

Power Equipment Operators
*See per diem note on last page

A1601	Group I, including:	47.74	11.40	14.75	1.00	L&M		75.04
	Asphalt Roller: Breakdown, Intermediate, and Finish							
	Back Filler							
	Barrier Machine (Zipper)							
	Belcrete with Power Pack & similar conveyors							
	Bending Machine							
	Boat Coxswain							
	Bulldozer							
	Cableways, Highlines & Cablecars							

Wage benefits key: BHR=basic hourly rate; H&W=health and welfare; IAF=industry advancement fund; LEG=legal fund; L&M=labor/management fund; PEN=pension fund; SAF=safety; SUI=supplemental unemployment insurance; S&L=SUI & LEG combined; TRN=training; THR=total hourly rate; VAC=vacation

Power Equipment Operators

*See per diem note on last page

	L&M						
A1601 Group I, including:	47.74	11.40	14.75	1.00	0.10	0.05	75.04
Cleaning Machine							
Coating Machine							
Concrete Hydro Blaster							
Cranes (45 tons & under or 150 feet of boom & under (including jib & attachments))							
(a) Hydralifts or Transporters, (all track or truck type)							
(b) Derricks							
(c) Overhead							
Crushers							
Deck Winches, Double Drum							
Ditching or Trenching Machine (16 inch or over)							
Drag Scraper, Yarder, and similar types							
Drilling Machines, Core, Cable, Rotary and Exploration							
Finishing Machine Operator, Concrete Paving, Laser Screed, Sidewalk, Curb & Gutter Machine							
Grade Checker and/or Line and Grade including Drone							
Helicopters							
Hover Craft, Flex Craft, Loadmaster, Air Cushion, All-Terrain Vehicle, Rollagon, Bargecable, Nodwell, & Snow Cat							
Hydro Ax, Feller Buncher & similar							
Hydro Excavation (Vac-Truck and Similar)							
Loaders (2 1/2 yards through 5 yards, including all attachments):							
(a) Forklifts (with telescopic boom & swing attachment)							
(b) Front End & Overhead, (2-1/2 yards through 5 yards)							
(c) Loaders, (with forks or pipe clamp)							
(d) Loaders, (elevating belt type, Euclid & similar types)							
Material Transfer Vehicle (Elevating Grader, Pickup Machine, and similar types)							
Mechanic, Welder, Bodyman, Electrical, Camp & Maintenance Engineer							
Micro Tunneling Machine							
Mixers: Mobile type with hoist combination							
Motor Patrol Grader							
Mucking Machine: Mole, Tunnel Drill, Horizontal/Directional Drill Operator and/or Shield							
Off-Road Hauler (including Articulating and Haul Trucks)							
Operator on Dredges							
Piledriver Engineer, L.B. Foster, Puller or similar paving breaker							
Plant Operator (Asphalt & Concrete)							
Power Plant, Turbine Operator 200 k.w & over (power plants or combination of power units over 300 k.w.)							
Remote Controlled Equipment							
Scraper (through 40 yards)							

Wage benefits key: BHR=basic hourly rate; H&W=health and welfare; IAF=industry advancement fund; LEG=legal fund; L&M=labor/management fund; PEN=pension fund; SAF=safety; SUI=supplemental unemployment insurance; S&L=SUI & LEG combined; TRN=training; THR=total hourly rate; VAC=vacation

Power Equipment Operators								
*See per diem note on last page								

		L&M						
A1601	Group I, including:	47.74	11.40	14.75	1.00	0.10	0.05	75.04
	Service Oiler/Service Engineer							
	Shot Blast Machine							
	Shovels, Backhoes, Excavators with all attachments, and Gradealls (3 yards & under)							
	Sideboom (under 45 tons)							
	Sub Grader (Gurries & similar types)							
	Tack Tractor							
	Truck Mounted Concrete Pump, Conveyor/Tele-belt, & Creter							
	Wate Kote Machine							

		L&M						
A1602	Group IA, including:	49.64	11.40	14.75	1.00	0.10	0.05	76.94
	Camera/Tool/Video Operator (Slipline)							
	Certified Welder, Electrical Mechanic, Camp Maintenance Engineer, Mechanic (over 10,000 hours)							
	Cranes (over 45 tons or 150 feet including jib & attachments)							
	(a) Clamshells & Draglines (over 3 yards)							
	(b) Tower Cranes							
	Licensed Water/Waste Water Treatment Operator							
	Loaders (over 5 yards)							
	Motor Patrol Grader, Dozer, Grade Tractor (finish: when finishing to final grade and/or to hubs, or for asphalt)							
	Power Plants (1000 k.w. & over)							
	Profiler, Reclaimer, and Roto-Mill							
	Quad							
	Scrapers (over 40 yards)							
	Screed							
	Shovels, Backhoes, Excavators with all attachments (over 3 yards)							
	Sidebooms (over 45 tons)							
	Slip Form Paver, C.M.I. & similar types							
	Topside (Asphalt Paver, Slurry machine, Spreaders, and similar types)							

		L&M						
A1603	Group II, including:	46.91	11.40	14.75	1.00	0.10	0.05	74.21
	Boiler - Fireman							
	Cement Hogs & Concrete Pump Operator							
	Conveyors (except those listed in Group I)							
	Hoists on Steel Erection, Towermobiles & Air Tuggers							
	Horizontal/Directional Drill Locator							
	Locomotives, Rod & Geared Engines							
	Mixers							
	Screening, Washing Plant							

Wage benefits key: BHR=basic hourly rate; H&W=health and welfare; IAF=industry advancement fund; LEG=legal fund; L&M=labor/management fund; PEN=pension fund; SAF=safety; SUI=supplemental unemployment insurance; S&L=SUI & LEG combined; TRN=training; THR=total hourly rate; VAC=vacation

Power Equipment Operators

*See per diem note on last page

A1603 Group II, including:							L&M	
	46.91	11.40	14.75	1.00	0.10	0.05		74.21

- Sideboom (cradling rock drill, regardless of size)
- Skidder
- Trenching Machines (under 16 inches)
- Water/Waste Water Treatment Operator

A1604 Group III, including:							L&M	
	46.13	11.40	14.75	1.00	0.10	0.05		73.43

- "A" Frame Trucks, Deck Winches
- Bombardier (tack or tow rig)
- Boring Machine
- Brooms, Power (sweeper, elevator, vacuum, or similar)
- Bump Cutter
- Compressor
- Farm Tractor
- Forklift, Industrial Type
- Gin Truck or Winch Truck (with poles when used for hoisting)
- Hoists, Air Tuggers, Elevators
- Loaders:
 - (a) Elevating-Athey, Barber Greene & similar types
 - (b) Forklifts or Lumber Carrier (on construction job sites)
 - (c) Forklifts, (with tower)
 - (d) Overhead & Front End, (under 2-1/2 yards)
- Locomotives: Dinkey (air, steam, gas & electric) Speeders
- Mechanics, Light Duty
- Oil, Blower Distribution
- Posthole Digger, Mechanical
- Pot Fireman (power agitated)
- Power Plant, Turbine Operator, (under 200 k.w.)
- Pumps, Water
- Roller (other than Asphalt)
- Saws, Concrete
- Skid Hustler
- Skid Steer (with all attachments)
- Stake Hopper
- Straightening Machine
- Tow Tractor

A1605 Group IV, including:							L&M	
	39.42	11.40	14.75	1.00	0.10	0.05		66.72

- Crane Assistant Engineer/Rig Oiler
- Drill Helper
- Parts & Equipment Coordinator

Wage benefits key: BHR=basic hourly rate; H&W=health and welfare; IAF=industry advancement fund; LEG=legal fund; L&M=labor/management fund; PEN=pension fund; SAF=safety; SUI=supplemental unemployment insurance; S&L=SUI & LEG combined; TRN=training; THR=total hourly rate; VAC=vacation

Class Code	Classification of Laborers & Mechanics	BHR	H&W	PEN	TRN	Other	Benefits	THR
------------	--	-----	-----	-----	-----	-------	----------	-----

Power Equipment Operators
 *See per diem note on last page

		L&M						
A1605	Group IV, including:	39.42	11.40	14.75	1.00	0.10	0.05	66.72
	Spotter							
	Steam Cleaner							
	Swamper (on trenching machines or shovel type equipment)							

Roofers
 *See per diem note on last page

		L&M						
A1701	Roofer & Waterproofer	47.62	13.75	3.91	0.81	0.10	0.06	66.25

		L&M						
A1702	Roofer Material Handler	34.23	13.75	3.91	0.81	0.10	0.06	52.86

Sheet Metal Workers, Region I (North of N63 latitude)
 *See per diem note on last page

		L&M						
N1801	Sheet Metal Journeyman	50.83	12.25	14.86	1.80	0.12		79.86

- Air Balancing and duct cleaning of HVAC systems
- Brazing, soldering or welding of metals
- Demolition of sheet metal HVAC systems
- Fabrication and installation of exterior wall sheathing, siding, metal roofing, flashing, decking and architectural sheet metal work
- Fabrication and installation of heating, ventilation and air conditioning ducts and equipment
- Fabrication and installation of louvers and hoods
- Fabrication and installation of sheet metal lagging
- Fabrication and installation of stainless steel commercial or industrial food service equipment
- HVAC-R Service Mechanic, servicing and maintaining HVAC-R Systems
- Manufacture, fabrication assembly, installation and alteration of all ferrous and nonferrous metal work
- Metal lavatory partitions
- Preparation of drawings taken from architectural and engineering plans required for fabrication and erection of sheet metal work
- Sheet Metal shelving
- Sheet Metal venting, chimneys and breaching
- Skylight installation

Sheet Metal Workers, Region II (South of N63 latitude)
 *See per diem note on last page

Wage benefits key: BHR=basic hourly rate; H&W=health and welfare; IAF=industry advancement fund; LEG=legal fund; L&M=labor/management fund; PEN=pension fund; SAF=safety; SUI=supplemental unemployment insurance; S&L=SUI & LEG combined; TRN=training; THR=total hourly rate; VAC=vacation

Class Code	Classification of Laborers & Mechanics	BHR	H&W	PEN	TRN	Other	Benefits	THR
------------	--	-----	-----	-----	-----	-------	----------	-----

Sheet Metal Workers, Region II (South of N63 latitude)

*See per diem note on last page

							L&M	
S1801	Sheet Metal Journeyman	45.35	12.23	14.70	1.83	0.43		74.54
	Air Balancing and duct cleaning of HVAC systems							
	Brazing, soldering or welding of metals							
	Demolition of sheet metal HVAC systems							
	Fabrication and installation of exterior wall sheathing, siding, metal roofing, flashing, decking and architectural sheet metal work							
	Fabrication and installation of heating, ventilation and air conditioning ducts and equipment							
	Fabrication and installation of louvers and hoods							
	Fabrication and installation of sheet metal lagging							
	Fabrication and installation of stainless steel commercial or industrial food service equipment							
	HVAC-R Service Mechanic, servicing and maintaining HVAC-R Systems							
	Manufacture, fabrication assembly, installation and alteration of all ferrous and nonferrous metal work							
	Metal lavatory partitions							
	Preparation of drawings taken from architectural and engineering plans required for fabrication and erection of sheet metal work							
	Sheet Metal shelving							
	Sheet Metal venting, chimneys and breaching							
	Skylight installation							

Sprinkler Fitters

*See per diem note on last page

							L&M	
A1901	Sprinkler Fitter	54.01	10.55	18.25	0.52	0.25		83.58

Surveyors

*See per diem note on last page

							L&M	
A2001	Chief of Parties	54.50	12.48	13.64	1.20	0.10		81.92
A2002	Party Chief	50.69	12.48	13.64	1.20	0.10		78.11
A2003	Line & Grade Technician/Office Technician/GPS, Drones	47.94	12.48	13.64	1.20	0.10		75.36
A2004	Associate Party Chief (including Instrument Person & Head Chain Person)/Stake Hop/Grademan	45.69	12.48	13.64	1.20	0.10		73.11

Wage benefits key: BHR=basic hourly rate; H&W=health and welfare; IAF=industry advancement fund; LEG=legal fund; L&M=labor/management fund; PEN=pension fund; SAF=safety; SUI=supplemental unemployment insurance; S&L=SUI & LEG combined; TRN=training; THR=total hourly rate; VAC=vacation

Class Code	Classification of Laborers & Mechanics	BHR	H&W	PEN	TRN	Other	Benefits	THR
------------	--	-----	-----	-----	-----	-------	----------	-----

Surveyors
*See per diem note on last page

A2006	Chain Person (for crews with more than 2 people)	41.09	12.48	13.64	1.20		L&M 0.10	68.51
--------------	--	-------	-------	-------	------	--	------------------------	-------

Truck Drivers
*See per diem note on last page

A2101	Group I, including:	46.84	12.48	13.64	1.20		L&M 0.10	74.26
--------------	---------------------	-------	-------	-------	------	--	------------------------	-------

- Air/Sea Traffic Controllers
- Ambulance/Fire Truck Driver (EMT certified)
- Boat Coxswain
- Captains & Pilots (air & water)
- Deltas, Commanders, Rollagons, & similar equipment (when pulling sleds, trailers or similar equipment)
- Dump Trucks (including articulating end dumps, rockbuggy, side dump, belly dump, & trucks with pups) over 40 yards up to & including 60 yards
- Fueler
- Helicopter Transporter
- Liquid Vac Truck/Super Vac Truck
- Material Coordinator or Purchasing Agent
- Oil Distributor Truck
- Ready-mix (over 12 yards up to & including 15 yards) (over 15 yards to be negotiated)
- Semi with Double Box Mixer
- Tireman, Medium Duty (Truck Tires up to 1200-24")
- Water Wagon (250 Bbls and above)

A2102	Group 1A including:	48.19	12.48	13.64	1.20		L&M 0.10	75.61
--------------	---------------------	-------	-------	-------	------	--	------------------------	-------

- Dump Trucks (including rockbuggy, side dump, belly dump & trucks with pups) over 60 yards up to & including 100 yards (over 100 yards to be negotiated)
- Jeeps (driver under load)
- Lowboys, including tractor attached trailers & jeeps, up to & including 12 axles (over 12 axles or 150 tons to be negotiated)
- Tireman Heavy Duty (earthmover tires, i.e., loader, scraper, haul truck)

A2103	Group II, including:	45.51	12.48	13.64	1.20		L&M 0.10	72.93
--------------	----------------------	-------	-------	-------	------	--	------------------------	-------

- All Deltas, Commanders, Rollagons, & similar equipment
- Batch Trucks (8 yards & up)
- Batch Trucks (up to & including 7 yards)
- Boom Truck/Knuckle Truck (over 5 tons)
- Cacasco Truck/Heat Stress Truck
- Construction and Material Safety Technician

Wage benefits key: BHR=basic hourly rate; H&W=health and welfare; IAF=industry advancement fund; LEG=legal fund; L&M=labor/management fund; PEN=pension fund; SAF=safety; SUI=supplemental unemployment insurance; S&L=SUI & LEG combined; TRN=training; THR=total hourly rate; VAC=vacation

Truck Drivers
 *See per diem note on last page

A2103 Group II, including:	45.51	12.48	13.64	1.20			L&M 0.10	72.93
-----------------------------------	-------	-------	-------	------	--	--	------------------------	-------

- Dump Trucks (including articulating end dump, rockbuggy, side dump, belly dump, & trucks with pups) over 20 yards up to & including 40 yards
- Gin Pole Truck, Winch Truck, Wrecker (truck mounted "A" frame manufactured rating over 5 tons)
- Mechanics
- Partsman
- Ready-mix (up to & including 12 yards)
- Stringing Truck
- Turn-O-Wagon or DW-10 (not self loading)

A2104 Group III, including:	44.64	12.48	13.64	1.20			L&M 0.10	72.06
------------------------------------	-------	-------	-------	------	--	--	------------------------	-------

- Boom Truck/Knuckle Truck (up to & including 5 tons)
- Dump Trucks (including articulating end dump, rockbuggy, side dump, belly dump, & trucks with pups) over 10 yards up to & including 20 yards
- Expeditor (electrical & pipefitting materials)
- Gin Pole Truck, Winch Truck, Wrecker (truck mounted "A" frame manufactured rating 5 tons & under)
- Greaser - Shop
- Semi or Truck & Trailer
- Thermal Plastic Layout Technician
- Traffic Control Technician
- Trucks/Jeeps (push or pull)

A2105 Group IV, including:	44.02	12.48	13.64	1.20			L&M 0.10	71.44
-----------------------------------	-------	-------	-------	------	--	--	------------------------	-------

- Air Cushion or similar type vehicle
- All Terrain Vehicle
- Buggymobile
- Bull Lift & Fork Lift, Fork Lift with Power Boom & Swing Attachment (over 5 tons)
- Bus Operator (over 30 passengers)
- Cement Spreader, Dry
- Combination Truck-Fuel & Grease
- Compactor (when pulled by rubber tired equipment)
- Dump Trucks (including rockbuggy, side dump, belly dump, & trucks with pups) up to & including 10 yards
- Dumpster
- Expeditor (general)
- Fire Truck/Ambulance Driver
- Flat Beds, Dual Rear Axle
- Foam Distributor Truck Dual Axle
- Front End Loader with Fork

Wage benefits key: BHR=basic hourly rate; H&W=health and welfare; IAF=industry advancement fund; LEG=legal fund; L&M=labor/management fund; PEN=pension fund; SAF=safety; SUI=supplemental unemployment insurance; S&L=SUI & LEG combined; TRN=training; THR=total hourly rate; VAC=vacation

Truck Drivers

*See per diem note on last page

						L&M	
A2105	Group IV, including:	44.02	12.48	13.64	1.20	0.10	71.44
	Grease Truck						
	Hydro Seeder, Dual Axle						
	Hyster Operators (handling bulk aggregate)						
	Loadmaster (air & water operations)						
	Lumber Carrier						
	Ready-mix, (up to & including 7 yards)						
	Rigger (air/water/oilfield)						
	Tireman, Light Duty						
	Track Truck Equipment						
	Truck Vacuum Sweeper						
	Warehouseperson						
	Water Truck (Below 250 Bbls)						
	Water Truck (straight)						
	Water Wagon, Semi						

						L&M	
A2106	Group V, including:	43.22	12.48	13.64	1.20	0.10	70.64
	Buffer Truck						
	Bull Lifts & Fork Lifts, Fork Lifts with Power Boom & Swing Attachments (up to & including 5 tons)						
	Bus Operator (up to 30 passengers)						
	Farm Type Rubber Tired Tractor (when material handling or pulling wagons on a construction project)						
	Flat Beds, Single Rear Axle						
	Foam Distributor Truck Single Axle						
	Fuel Handler (station/bulk attendant)						
	Gear/Supply Truck						
	Gravel Spreader Box Operator on Truck						
	Hydro Seeder, Single Axle						
	Pickups (pilot cars & all light-duty vehicles)						
	Rigger						
	Swamper						
	Tack Truck (welders/gear)						
	Team Drivers (horses, mules, & similar equipment)						

Tunnel Workers, Laborers (The Alaska areas north of N63 latitude and east of W138 longitude)

*See per diem note on last page

						L&M	LEG	
N2201	Group I, including:	39.60	9.55	21.16	1.65	0.30	0.20	72.46
	Brakeman							
	Mucker							

Wage benefits key: BHR=basic hourly rate; H&W=health and welfare; IAF=industry advancement fund; LEG=legal fund; L&M=labor/management fund; PEN=pension fund; SAF=safety; SUI=supplemental unemployment insurance; S&L=SUI & LEG combined; TRN=training; THR=total hourly rate; VAC=vacation

Tunnel Workers, Laborers (The Alaska areas north of N63 latitude and east of W138 longitude)
 *See per diem note on last page

N2201	Group I, including:	39.60	9.55	21.16	1.65	0.30	0.20	72.46
--------------	---------------------	-------	------	-------	------	------	------	-------

- Nipper
- Storm Water Pollution Protection Plan Worker (SWPPP Worker - erosion and sediment control Laborer)
- Topman & Bull Gang
- Tunnel Track Laborer

N2202	Group II, including:	40.70	9.55	21.16	1.65	0.30	0.20	73.56
--------------	----------------------	-------	------	-------	------	------	------	-------

- Burning & Cutting Torch
- Certified Erosion Sediment Control Lead (CESCL Laborer)
- Concrete Laborer
- Floor Preparation, Core Drilling
- Jackhammer/Chipping Gun or Pavement Breaker
- Laser Instrument Operator
- Nozzlemen, Pumpcrete or Shotcrete
- Pipelayer Helper

N2203	Group III, including:	41.69	9.55	21.16	1.65	0.30	0.20	74.55
--------------	-----------------------	-------	------	-------	------	------	------	-------

- Miner
- Retimberman

N2204	Group IIIA, including:	45.96	9.55	21.16	1.65	0.30	0.20	78.82
--------------	------------------------	-------	------	-------	------	------	------	-------

- Asphalt Raker, Asphalt Belly Dump Lay Down
- Drill Doctor (in the field)
- Driller (including, but not limited to wagon drills, air-track drills, hydraulic drills)
- Pioneer Drilling & Drilling Off Tugger (all type drills)
- Pipelayer
- Powderman (Employee Possessor)
- Storm Water Pollution Protection Plan Specialist (SWPPP Specialist)
- Traffic Control Supervisor, DOT Qualified

N2206	Group IIIB, including:	52.10	5.50	21.16	1.65	0.30	0.20	80.91
--------------	------------------------	-------	------	-------	------	------	------	-------

- Driller (including, but not limited to wagon drills, air-track drills, hydraulic drills)(over 5,000 hours)
- Federal Powderman (Responsible Person in Charge)
- Grade Checking (setting or transferring of grade marks, line and grade, GPS, drones)
- Pioneer Drilling & Drilling Off Tugger (all type drills)(over 5,000 hours)
- Stake Hopper

Wage benefits key: BHR=basic hourly rate; H&W=health and welfare; IAF=industry advancement fund; LEG=legal fund; L&M=labor/management fund; PEN=pension fund; SAF=safety; SUI=supplemental unemployment insurance; S&L=SUI & LEG combined; TRN=training; THR=total hourly rate; VAC=vacation

Tunnel Workers, Laborers (The area that is south of N63 latitude and west of W138 longitude)
 *See per diem note on last page

						L&M	LEG	
S2201	Group I, including:	39.60	9.55	21.16	1.65	0.30	0.20	72.46

- Brakeman
- Mucker
- Nipper
- Storm Water Pollution Protection Plan Worker (SWPPP Worker - erosion and sediment control Laborer)
- Topman & Bull Gang
- Tunnel Track Laborer

						L&M	LEG	
S2202	Group II, including:	40.70	9.55	21.16	1.65	0.30	0.20	73.56

- Burning & Cutting Torch
- Certified Erosion Sediment Control Lead (CESCL Laborer)
- Concrete Laborer
- Floor Preparation, Core Drilling
- Jackhammer/Chipping Gun or Pavement Breaker
- Laser Instrument Operator
- Nozzlemen, Pumpcrete or Shotcrete
- Pipelayer Helper

						L&M	LEG	
S2203	Group III, including:	41.69	9.55	21.16	1.65	0.30	0.20	74.55

- Miner
- Retimberman

						L&M	LEG	
S2204	Group IIIA, including:	45.96	9.55	21.16	1.65	0.30	0.20	78.82

- Asphalt Raker, Asphalt Belly Dump Lay Down
- Drill Doctor (in the field)
- Driller (including, but not limited to wagon drills, air-track drills, hydraulic drills)
- Pioneer Drilling & Drilling Off Tugger (all type drills)
- Pipelayer
- Powderman (Employee Possessor)
- Storm Water Pollution Protection Plan Specialist (SWPPP Specialist)
- Traffic Control Supervisor, DOT Qualified

						L&M	LEG	
S2206	Group IIIB, including:	52.10	5.50	21.16	1.65	0.30	0.20	80.91

- Driller (including, but not limited to wagon drills, air-track drills, hydraulic drills)(over 5,000 hours)
- Federal Powderman (Responsible Person in Charge)
- Grade Checking (setting or transferring of grade marks, line and grade, GPS, drones)
- Pioneer Drilling & Drilling Off Tugger (all type drills)(over 5,000 hours)

Wage benefits key: BHR=basic hourly rate; H&W=health and welfare; IAF=industry advancement fund; LEG=legal fund; L&M=labor/management fund; PEN=pension fund; SAF=safety; SUI=supplemental unemployment insurance; S&L=SUI & LEG combined; TRN=training; THR=total hourly rate; VAC=vacation

Tunnel Workers, Laborers (The area that is south of N63 latitude and west of W138 longitude)
 *See per diem note on last page

S2206	Group IIIB, including:	52.10	5.50	21.16	1.65		L&M	LEG	
	Stake Hopper						0.30	0.20	80.91

Tunnel Workers, Power Equipment Operators
 *See per diem note on last page

A2207	Group I	52.51	11.40	14.75	1.00		L&M		
							0.10	0.05	79.81
A2208	Group IA	54.60	11.40	14.75	1.00		L&M		
							0.10	0.05	81.90
A2209	Group II	51.60	11.40	14.75	1.00		L&M		
							0.10	0.05	78.90
A2210	Group III	50.74	11.40	14.75	1.00		L&M		
							0.10	0.05	78.04
A2211	Group IV	43.36	11.40	14.75	1.00		L&M		
							0.10	0.05	70.66

* Per diem is an established practice for this classification. This means that per diem is an allowable alternative to board and lodging if all criteria are met. See 8 AAC 30.051-08 AAC 30.056, and the per diem information on page vii of this Pamphlet.

** Work in combination of classifications: Employees working in any combination of classifications within the diving crew (working diver, standby diver, and tender) in a shift are paid in the classification with the highest rate for a minimum of 8 hours per shift.

Wage benefits key: BHR=basic hourly rate; H&W=health and welfare; IAF=industry advancement fund; LEG=legal fund; L&M=labor/management fund; PEN=pension fund; SAF=safety; SUI=supplemental unemployment insurance; S&L=SUI & LEG combined; TRN=training; THR=total hourly rate; VAC=vacation

Shipyards Rates Addendum

This Addendum was developed to address the specialized industry of shipbuilding/repair in Alaska, as it relates to public works. For the purposes of providing rates for shipyard work the Department is adopting Shipyards rates from the state of Washington (King County). These rates only apply to work done in shipbuilding/repair in Alaska, under a public contract. This addendum will be updated two times a year to coincide with the corresponding Issue of *Laborers and Mechanics MINIMUM RATES OF PAY*.

Class Code	BHR H&W PEN TRN Other Benefits THR
Shipyards Workers *See total hourly(THR) note below	
A2300	Ship Building/Repair Boilermaker 50.35
A2305	Ship Building/Repair Carpenter 50.95
A2310	Ship Building/Repair Crane Operator 45.06
A2315	Ship Building/Repair Electrician 50.42
A2320	Ship Building/Repair Heat & Frost Insulator 84.58
A2325	Ship Building/Repair Laborer 50.95
A2330	Ship Building/Repair Mechanist 50.95
A2335	Ship Building/Repair Operating Engineer 45.06
A2340	Ship Building/Repair Painter 50.95
A2345	Ship Building/Repair Pipefitter 50.95
A2350	Ship Building/Repair Rigger 50.35
A2355	Ship Building/Repair Sheet Metal 50.35
A2360	Ship Building/Repair Shipwright 50.95
A2365	Ship Building/Repair Warehouse 45.06

*The THR includes the base hourly rate (BHR) and fringe benefits. Employers must pay a BHR and fringe benefit package that adds up to the THR. Fringe benefits included in the THR can be paid to employees in three ways; paid into a union trust fund, into an approved benefit plan, or paid directly on the paycheck as gross wages.

Wage benefits key: BHR=basic hourly rate; H&W=health and welfare; IAF=industry advancement fund; LEG=legal fund; L&M=labor/management fund; PEN=pension fund; SAF=safety; SUI=supplemental unemployment insurance; S&L=SUI & LEG combined; TRN=training; THR=total hourly rate; VAC=vacation



144 North Binkley Street, Soldotna, Alaska 99669

Geographic Information Systems

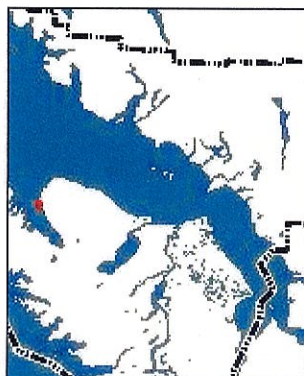
Homer Airport Terminal



New Sidewalk

This map is a user-generated static output from an Internet mapping site and is for reference only. Data layers that appear on this map may or may not be accurate, current, or otherwise reliable. Do not use for navigation.

DATE PRINTED: 8/17/2023



Legend

- Mileposts
- City Limits
- Highways
- Major Roads
- Roads
- Town Medium Volume
- Town Low/Seasonal, Other
- Proposed
- Parcels
- Image
- Red: Red
- Green: Green
- Blue: Blue



Notes

Enter map notes here.

