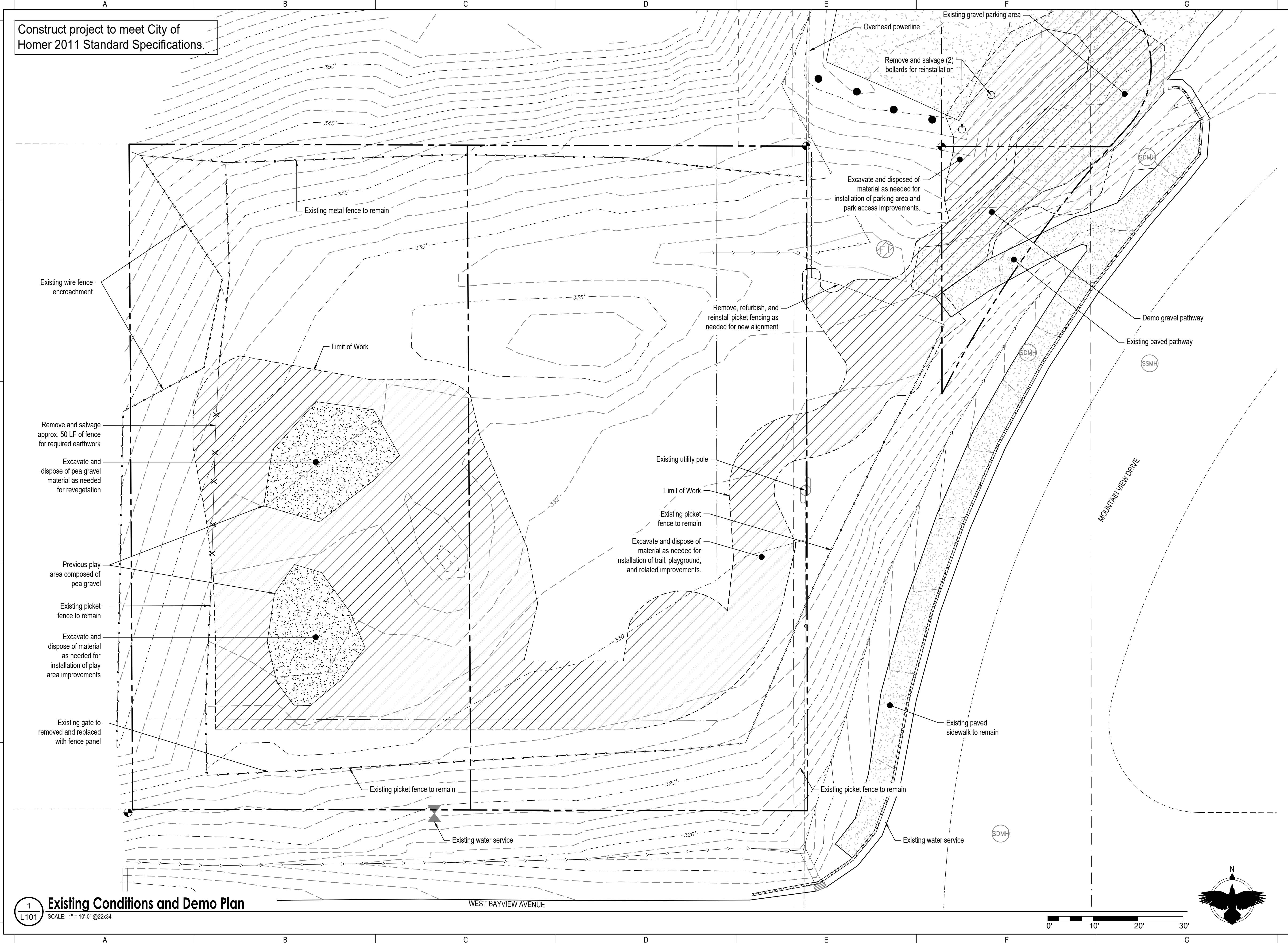


Drawing J:\HOM-23-02 Bayview Park\2 - CAD\Corvus-Sheets - Ph 1.dwg last saved on 7/8/2024 10:37 AM was plotted by Bradley Little on 7/8/2024 10:39 AM



Construct project to meet City of Homer 2011 Standard Specifications.

**Existing Conditions and Demo Plan**

SCALE: 1" = 10'-0" @22x34

**Corvus Design**  
Landscape Architecture  
www.corvus-design.com  
Anchorage - 907.222.2859  
2506-B Fairbanks St. 99503  
Juneau - 907.988.9000  
119 Seward St. 99801  
AECC #1195

SEAL:



Corporate License #1195

**CITY OF HOMER**  
**BAYVIEW PARK IMPROVEMENTS**  
**BID DOCUMENTS**  
**HOMER, AK**

If the above dimension does not measure exactly 1", this drawing has been enlarged or reduced, affecting all scales.

DATE: 2024/07/08  
JOB NUMBER: HOM-23-02  
DRAWN BY: BL  
CHECKED BY: PB

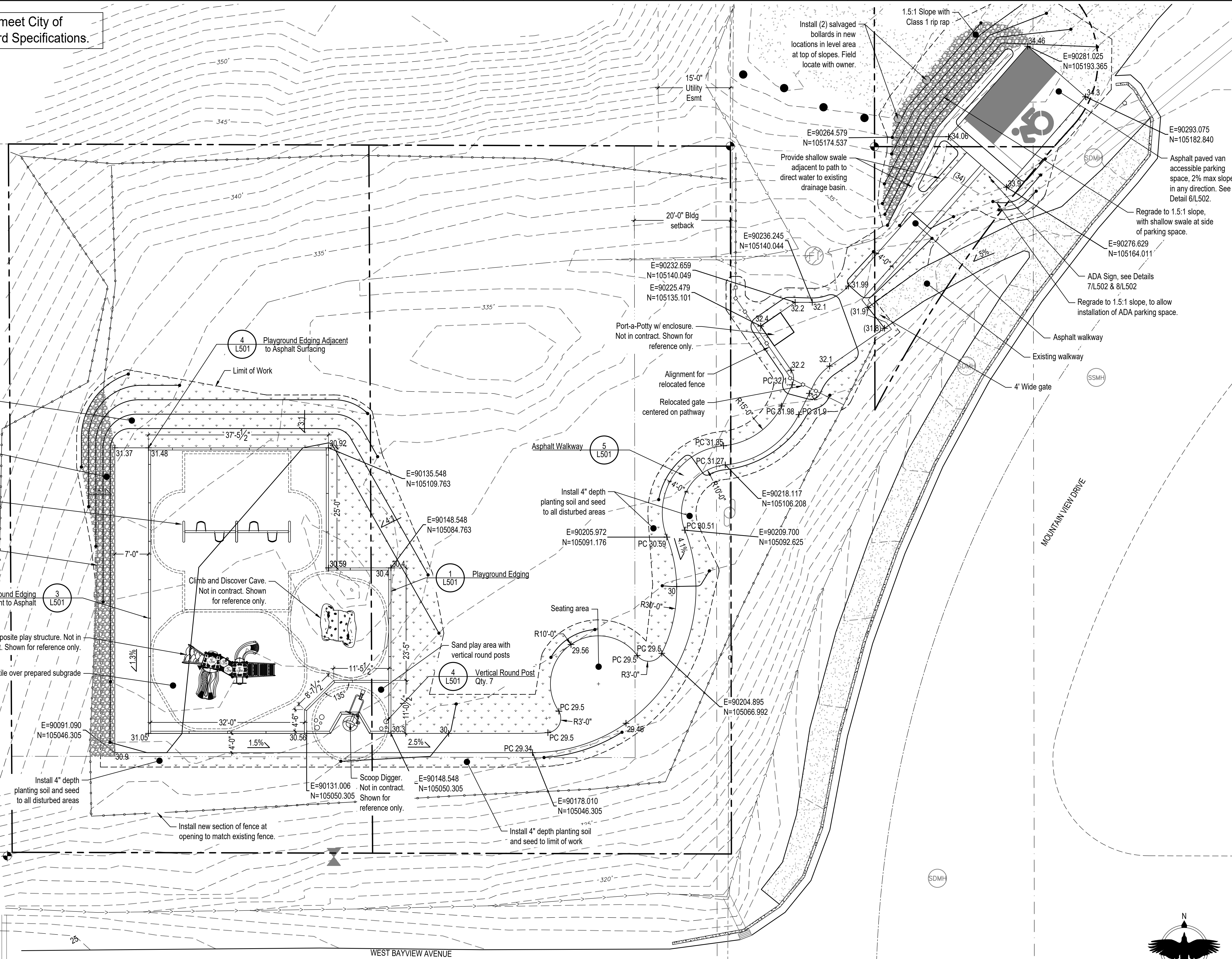
**EXISTING CONDITIONS AND DEMO PLAN**  
SHEET #:  
**L101**



Drawing J:\HOM-23-02 Bayview Park\2 - CAD\Corvus-Sheets - Ph 1.dwg last saved on 7/8/2024 10:37 AM was plotted by Bradley Little on 7/8/2024 10:39 AM

Construct project to meet City of  
Homer 2011 Standard Specifications.

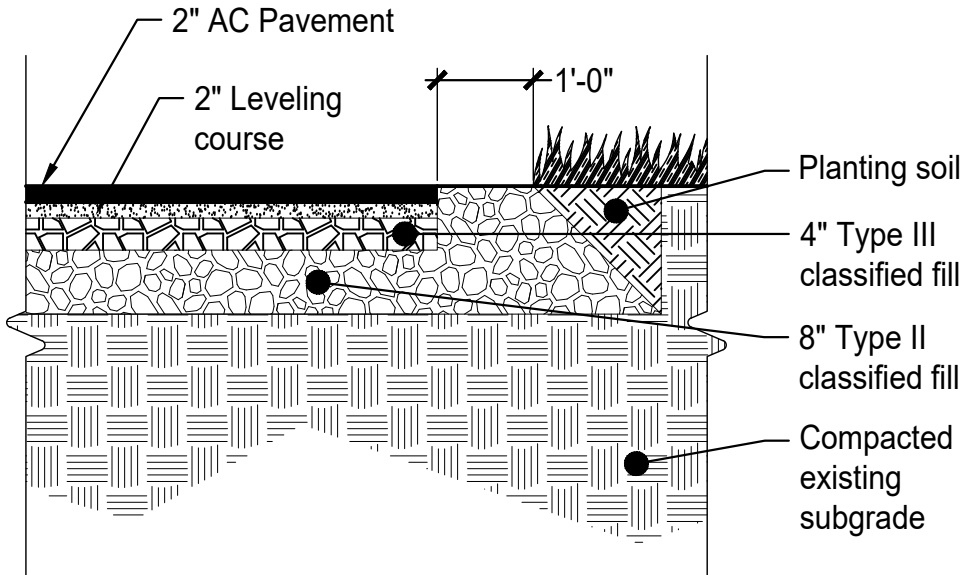
1  
L102  
Site Plan  
SCALE: 1" = 10'-0" @ 22x34



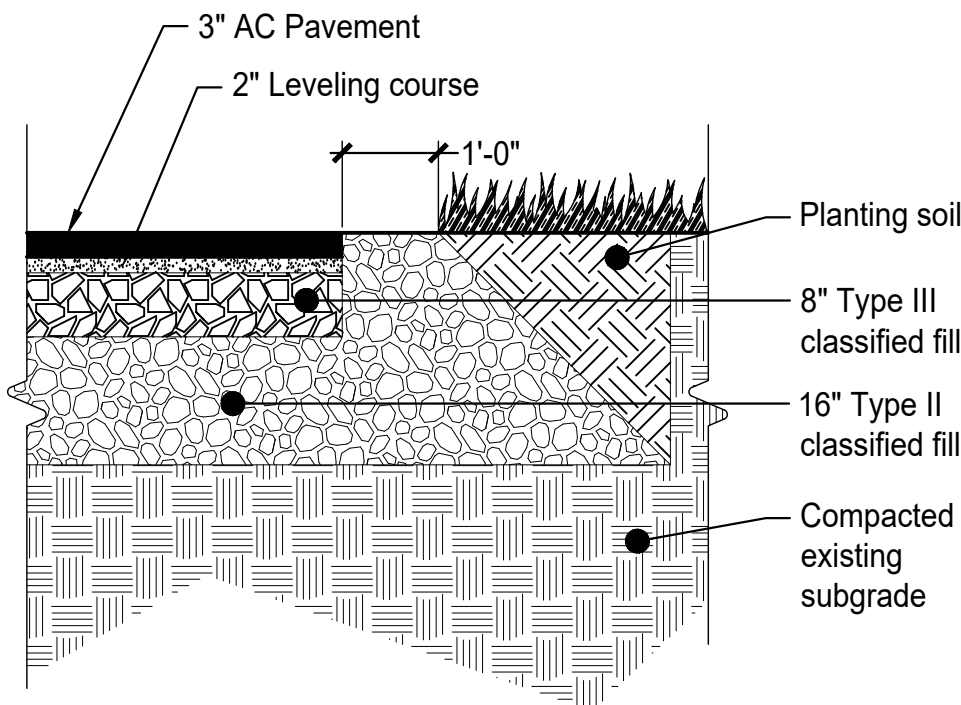


Drawing J:\HOM-23-02 Bayview Park\2 - CAD\Corvus-Sheets - Ph 1.dwg last saved on 7/8/2024 10:37 AM was plotted by Bradley Little on 7/8/2024 10:39 AM

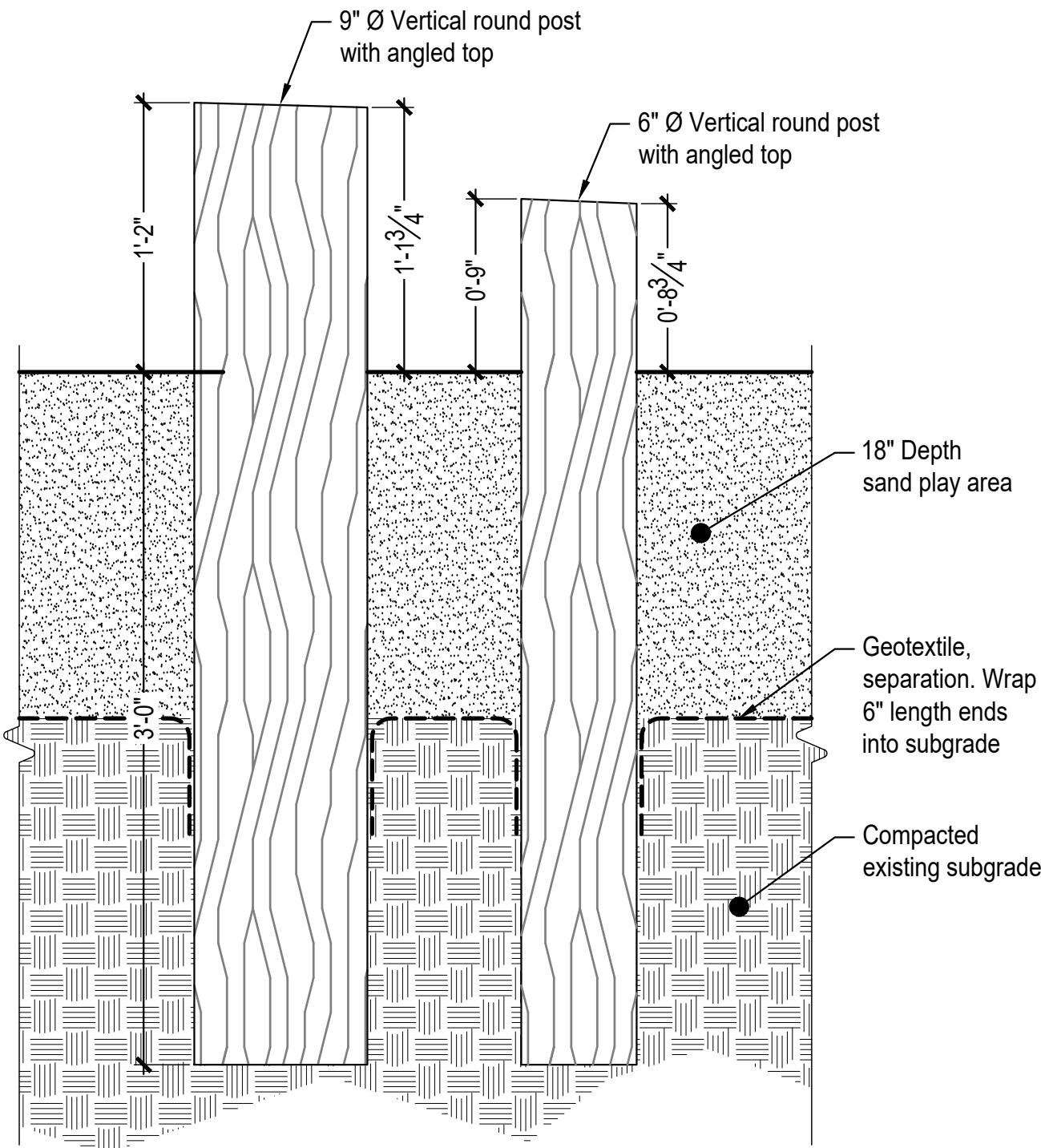
Construct project to meet City of  
Homer 2011 Standard Specifications.



5  
L501  
Asphalt Walkway  
SCALE: 6" = 1'-0" @22x34

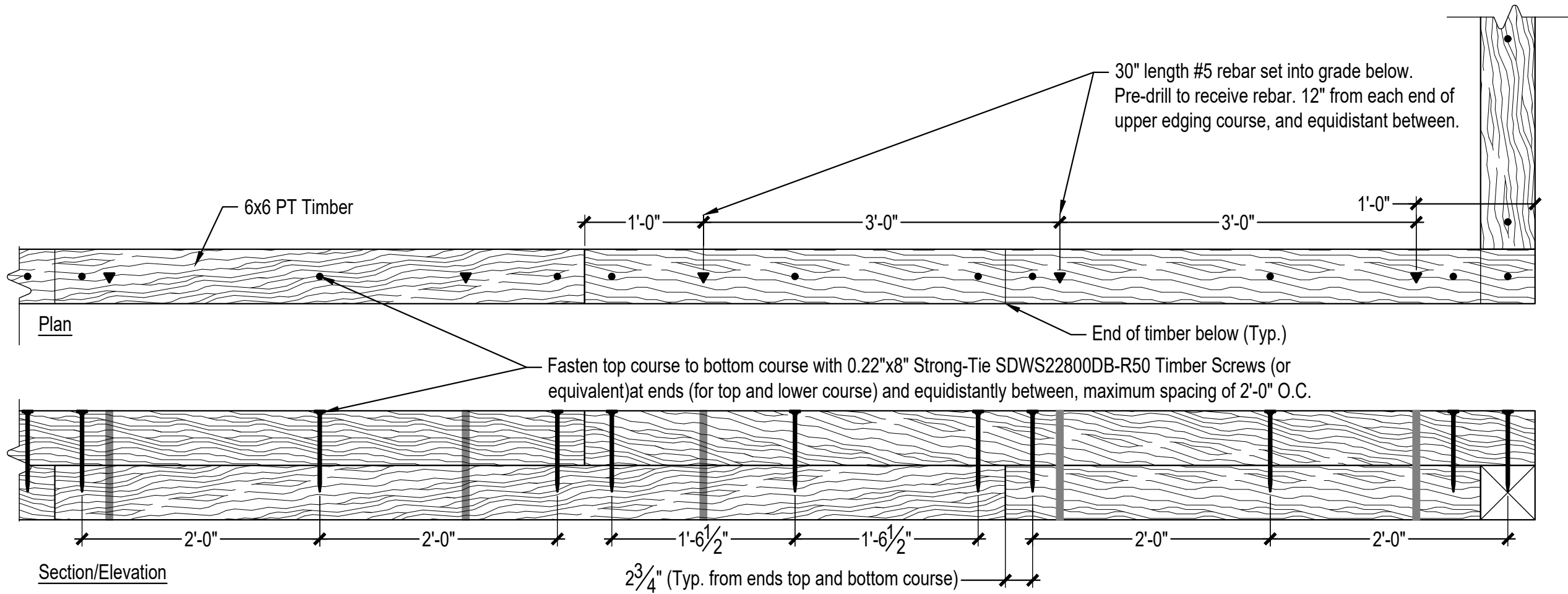


6  
L501  
Parking Pad  
SCALE: 6" = 1'-0" @22x34

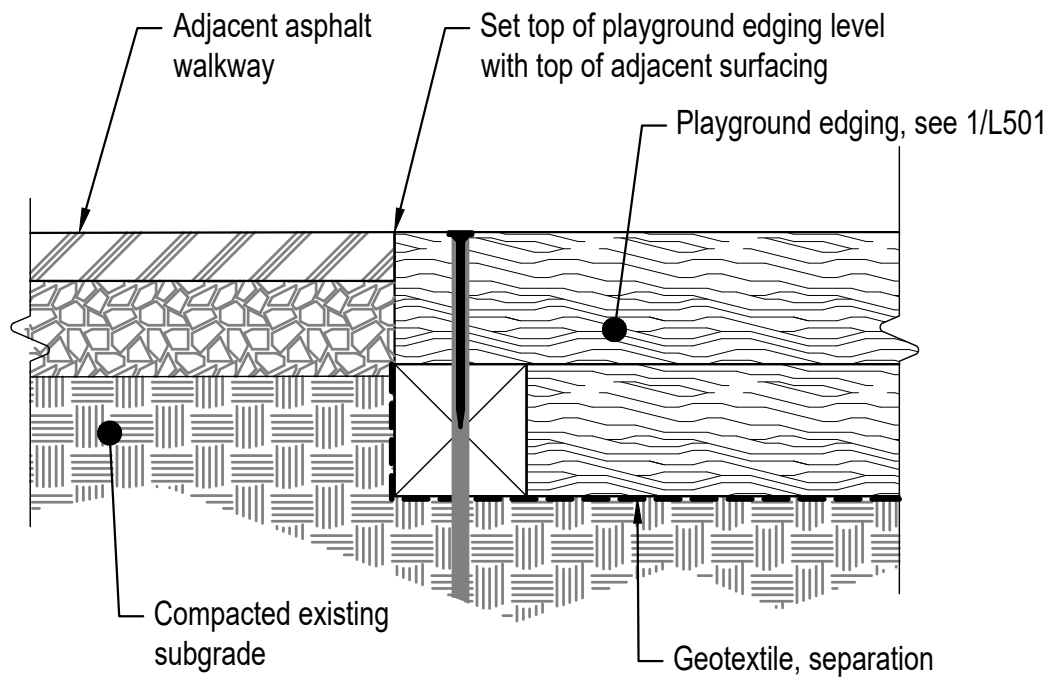


- Notes:
1. Vertical round posts to be locally sourced peeled spruce logs or accepted equivalent.
  2. Cut ends of posts to receive water-based, end grain preservative.

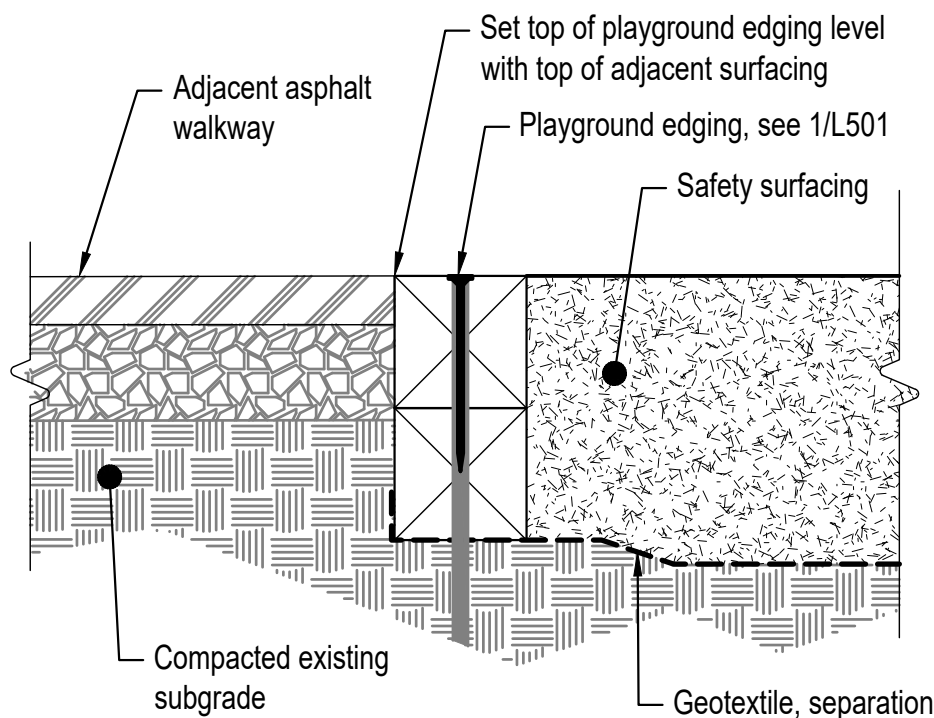
4  
L501  
Vertical Round Post  
SCALE: 1 1/2" = 1'-0" @22x34



1  
L501  
Playground Edging  
SCALE: 1" = 1'-0" @22x34

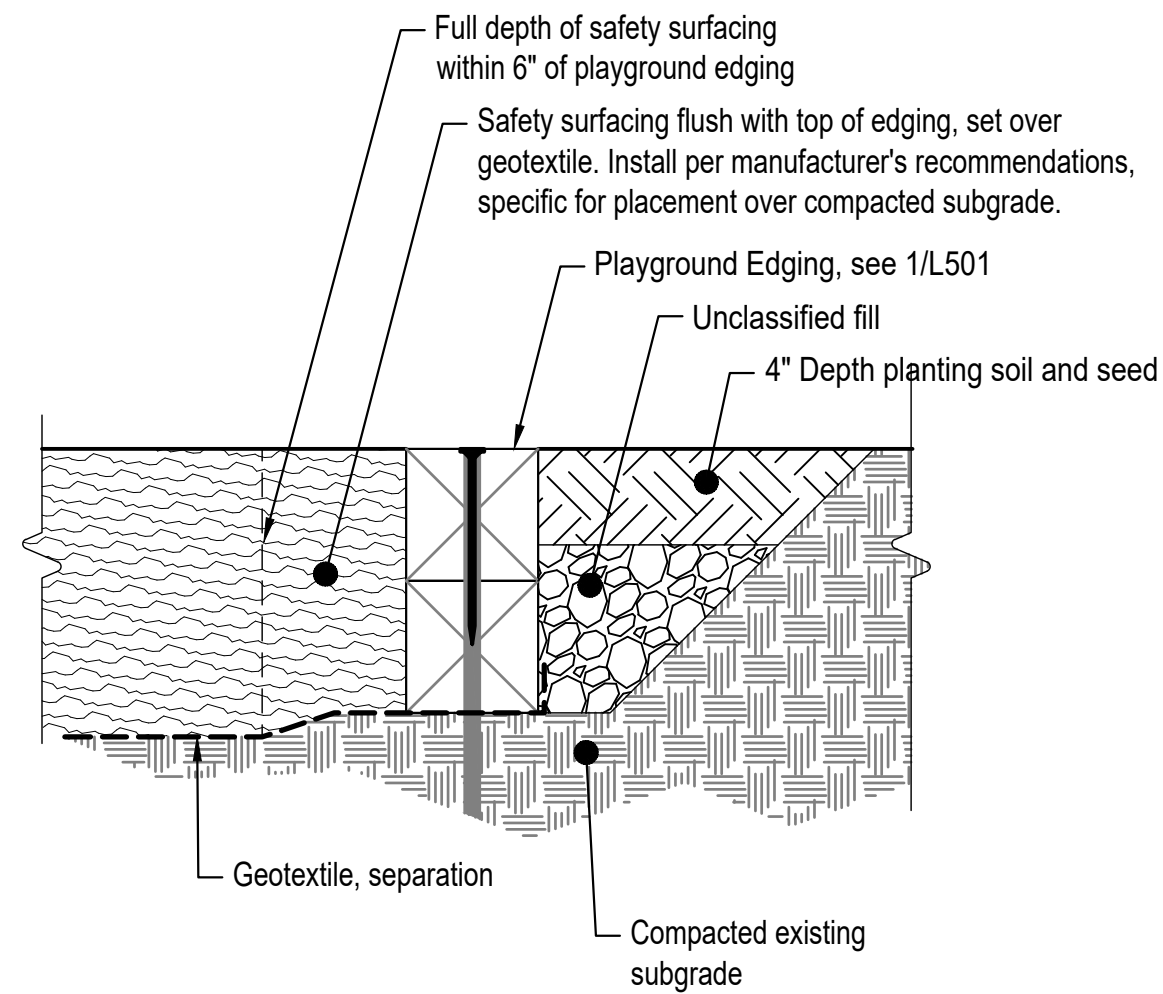


SECTION - PLAYGROUND EDGING PERPENDICULAR TO ASPHALT WALKWAY



SECTION - PLAYGROUND EDGING PARALLEL TO ASPHALT WALKWAY

3  
L501  
Playground Edging Adjacent to Asphalt  
SCALE: 1 1/2" = 1'-0" @22x34



2  
L501  
Playground Edging Adjacent to Grass  
SCALE: 1 1/2" = 1'-0" @22x34

SEAL:



CITY OF HOMER  
**BAYVIEW PARK IMPROVEMENTS**  
BID DOCUMENTS  
HOMER, AK

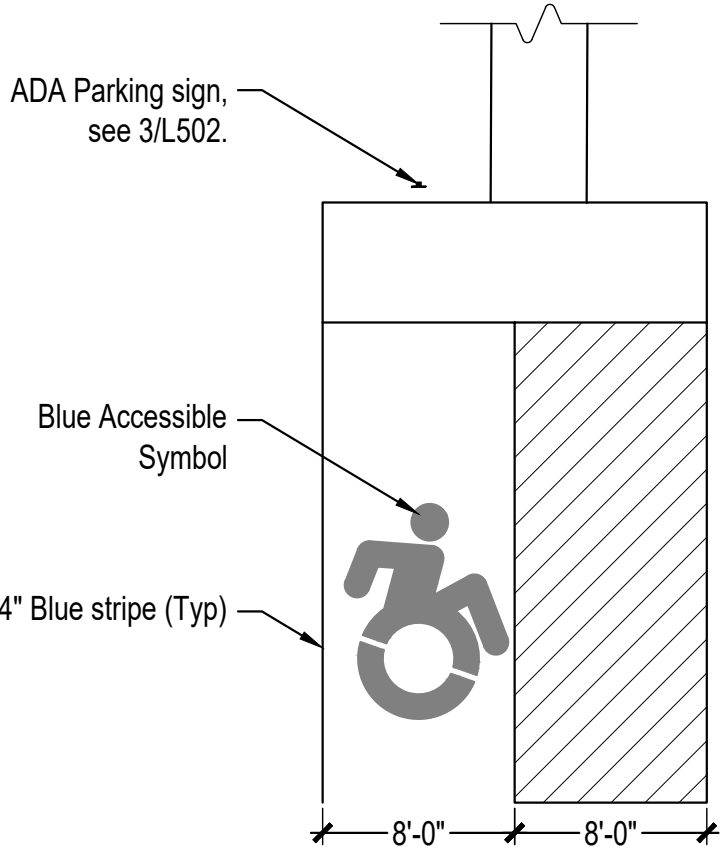
1" = ACTUAL  
If the above dimension does not measure exactly 1", this drawing has been enlarged or reduced, affecting all scales.

DATE: 2024/07/08  
JOB NUMBER: HOM-23-02  
DRAWN BY: BL  
CHECKED BY: PB

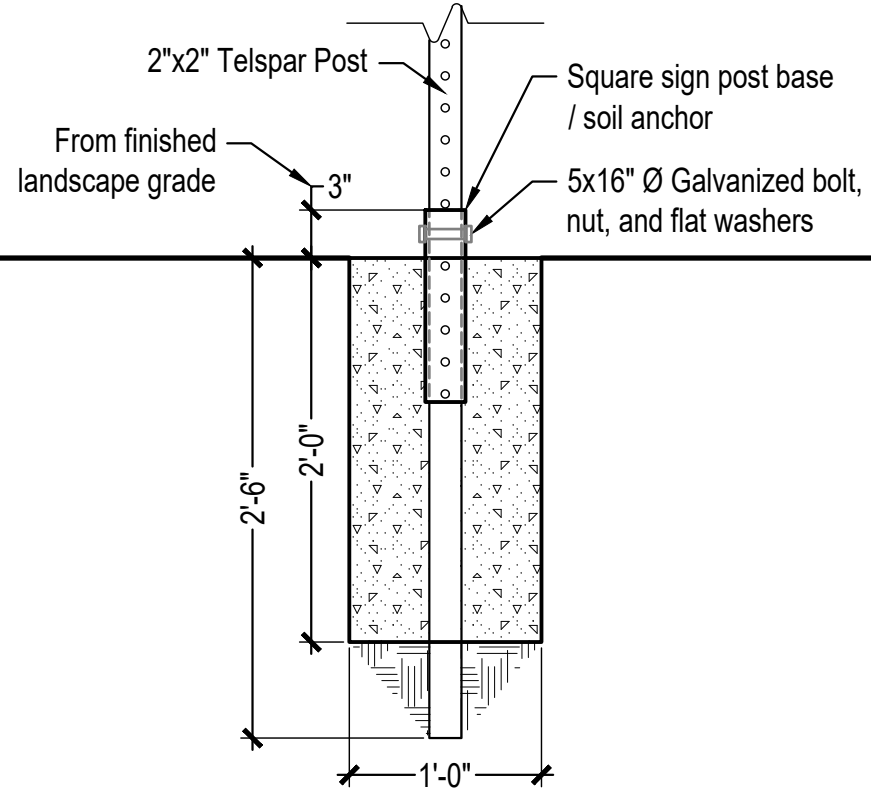
DETAILS  
SHEET #:  
**L501**

Drawing J:\HOM-23-02 Bayview Park\2 - CAD\Corvus-Sheets - Ph 1.dwg last saved on 7/8/2024 10:37 AM was plotted by Bradley Little on 7/8/2024 10:39 AM

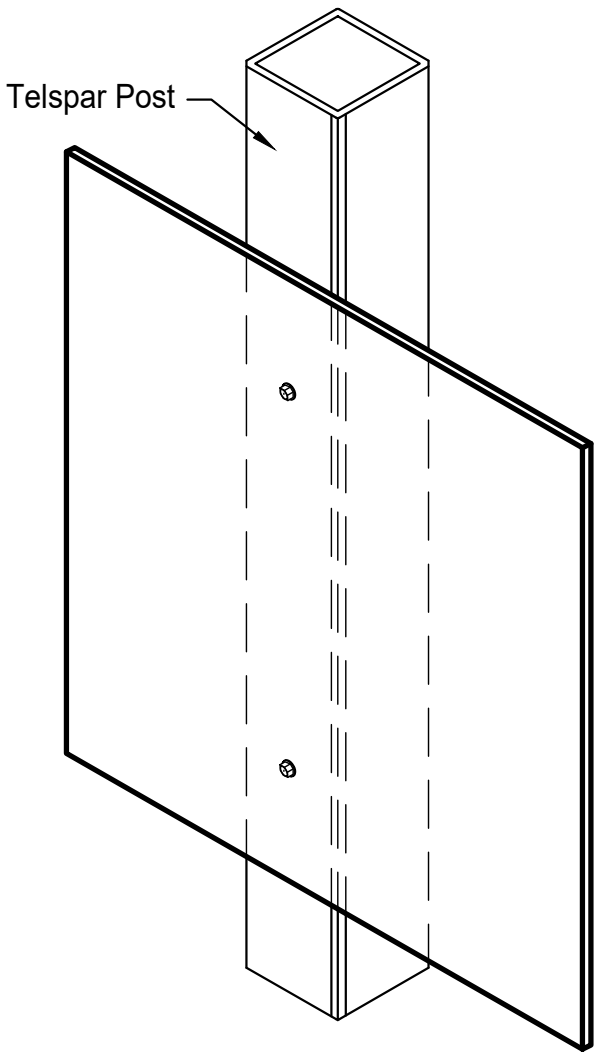
Construct project to meet City of  
Homer 2011 Standard Specifications.



1  
L502 Accessible Striping Detail  
SCALE: NTS @22x34



2  
L502 Sign Post Footing  
SCALE: NTS @22x34



- Sign Notes:
1. Bolt unframed signs directly to tubes.
  2. The tube brackets used on even inch size tubes may also be used on tubes 1/2" smaller in size.
  3. Install the top edge of signs 3" below the top of post, whenever they are mounted below signs secured by post top mounting brackets.
  4. Install weather tight caps on all pipe and tube posts, except perforated tubing.
  5. All new signs shall be mounted at minimum height of 7 feet from finished ground.
  6. Install signs 2.5' behind back of curb. Center sign on parking space.
  7. See specification for additional installation details.

3  
L502 Sign Installation  
SCALE: NTS @22x34

SEAL:



Corporate License #1195

CITY OF HOMER  
**BAYVIEW PARK IMPROVEMENTS**  
BID DOCUMENTS  
HOMER, AK

1" ACTUAL  
If the above dimension does not measure exactly 1", this drawing has been enlarged or reduced, affecting all scales.

DATE: 2024/07/08  
JOB NUMBER: HOM-23-02  
DRAWN BY: BL  
CHECKED BY: PB

DETAILS  
SHEET #:  
**L502**