



# City of Homer

[www.cityofhomer-ak.gov](http://www.cityofhomer-ak.gov)

Office of the City Manager

491 East Pioneer Avenue  
Homer, Alaska 99603

[citymanager@cityofhomer-ak.gov](mailto:citymanager@cityofhomer-ak.gov)

(p) 907-235-8121 x2222

(f) 907-235-3148

## Memorandum

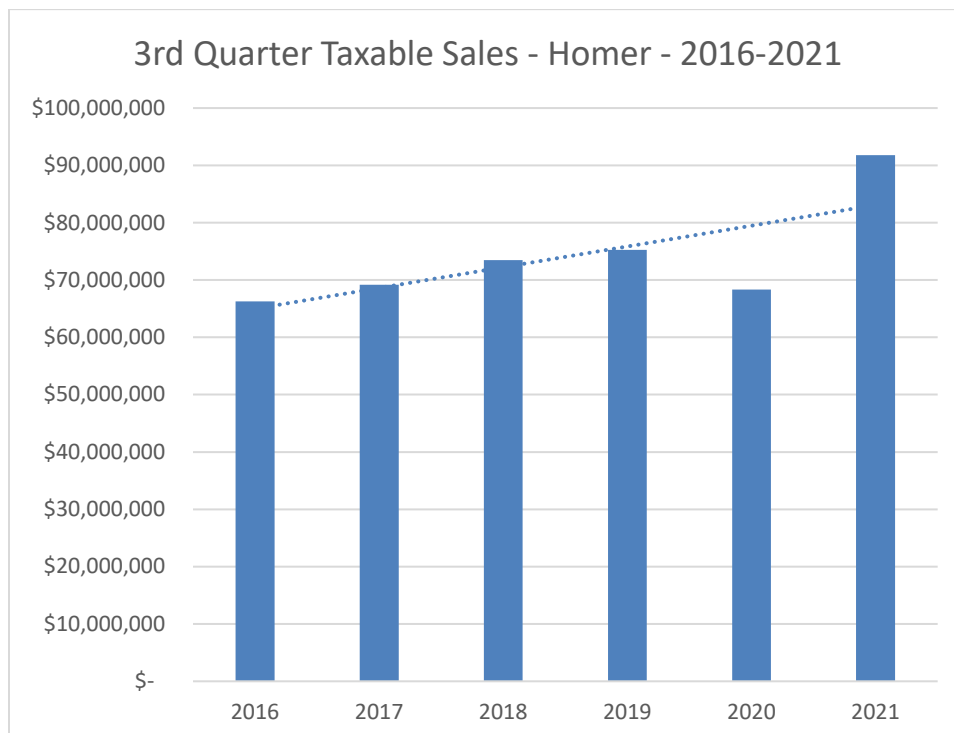
TO: Mayor Castner and Homer City Council  
FROM: Rob Dumouchel, City Manager  
DATE: December 8, 2021  
SUBJECT: City Manager's Report for December 13, 2021 Council Meeting

---

### Sales Tax Data

Sales tax is off to a very strong start for fiscal year 2022 which began in July 2021. The third quarter of calendar year 2021 (or first quarter of fiscal year 2022) set a record for the most taxable sales in Homer within a single quarter. This equates to approximately \$4.45 million in expected sales tax revenue (includes General Fund, HART, HAWSP, and Police Station revenues).

The chart below shows the trend for taxable sales in the third quarter of each calendar year going back to 2016. With the recent change in fiscal year, it's going to be a little awkward talking about year over year trends. On the staff side, we'll do our best to make it clear when we're talking about calendar years or fiscal years to minimize confusion as we all get used to the change.



### **HERC Progress – Survey and Website**

By the time of Monday's Council meeting, staff anticipates the website and community survey will be live and ready for responses. More information will be added to the website as time allows, including information Council requested during the recent work session. More public outreach to come!

### **Alaska Municipal League Conference**

I attended the Alaska Municipal League (AML) conference as well as the Alaska Municipal Management Association (AMMA) conference in Anchorage the week of November 15<sup>th</sup>. Both conferences were valuable opportunities to learn from and collaborate with other local governments around the state on issues that affect us here in Homer. During the AMMA conference, I was voted onto the AMMA Board of Directors.

### **New Year's Fireworks Planning**

Through the efforts of community members to organize and fundraise, New Year's Eve fireworks are returning to Mariner Park again this year. Staff from the Homer Police Department, Homer Volunteer Fire Department, Public Works, and Administration met with the special event applicant to discuss safety, traffic, etc. as it relates to the fireworks event. After discussing the possibility of using other locations on the spit, the fireworks will remain at Mariner Park with a much more coordinated effort between the special event permit holder and City staff. More event information, including how to support the fireworks financially, is available at: <https://www.facebook.com/events/591640528720768/>

### **Wayfinding Update**

The Economic Development Commission's Wayfinding and Streetscape Plan is nearing the final draft. See the results at the EDC's meeting on Tuesday, December 14, 6:00pm, in person at City Hall or via zoom. The draft plan will also be posted on the Planning Department website after the meeting. Comments welcome until December 30<sup>th</sup>.

### **North Pacific Update**

Alaska Scrap finished dismantling the derelict vessel North Pacific last month. They broke apart the vessel and transported scrap steel to a pile on the chip pad, which was then broken down to a size that can be resold. Other refuse went to the transfer station. Alaska Scrap is working with Port staff to schedule the loading of a scrap steel on to a barge load out across the Deep Water Dock later this winter.

### **Pacific Marine Expo - Seattle**

Harbormaster Hawkins, along with the Marine Trades Association, represented the Port of Homer at the Pacific Marine Expo in Seattle. The Expo is a three-day tradeshow featuring all sectors of the commercial fishing industry. It has hundreds of exhibitors and thousands of visitors. Harbormaster Hawkins promoted Homer as a strategic and beneficial location to conduct maritime-related businesses.

### **Spit Power Outage Follow Up**

On the night of Nov. 6-7, a power failure along the coastline caused disruption to radio communications at two sites. On the Spit, most of the equipment that relays emergency signals for police and fire automatically switched over to batteries, but the device that boosts the broadcast power was not included in that circuit. Without that boost, the signals coming off the tower could be received at close range but were too weak to reach most of the City. Fire Chief Kirko and IT Manager Nick Poolos set up a generator to power the signal booster, and the tower resumed full operations. The tower continued running off the generator all night, even after HEA restored service at 8 am. Communications briefly went down again when the generator ran out of fuel around 11 am. Fire personnel reconnected the tower to the HEA supply, which resolved the problem. Separately, the radio system at Public Works also switched over to battery power. It operated through the

night but was not reconnected to HEA even after power was restored, and the batteries eventually died. Connecting the radios back to the HEA supply brought them back into operation.

These unexpected disruptions caused by the power outage led City staff to implement the following changes:

- For the Spit tower, parts have been ordered to wire the signal booster into the battery backup, along with all the other equipment.
- The Public Works relay tower has a new battery now. IT staff are working on a system that will automatically, rather than manually, switch the radios between main power and battery power as circumstances require.
- As part of ongoing radio upgrades, we are working to make sure all emergency devices are compatible with the Alaska Land Mobile Radio (ALMR) standards. That will allow messages to be sent from every device and every tower, which provides much greater redundancy.
- Communications procedures between the various departments have been overhauled, to ensure that key personnel have the information they need when they need it. The new plan was tested during a scheduled power outage on Nov. 15, and things went much more smoothly.
- The relay tower on Skyline Drive is also being fitted with new batteries. It would not have helped during this specific event, but it will be important in case of a power outage that affects the ridge.

The following changes have not yet been completed, but are recommended:

- HPD needs a status panel that announces when the police station itself switches over to generator power.
- Upgrading the microwave communications network, which is already in progress, will allow dispatch to access automatically-reported data such as alarms on batteries.

### **Opportunity to Acquire Bridge Creek Watershed Protection District Lots**

The City has been contacted by Jay Farmwald, a land owner within the Bridge Creek Watershed Protection District. He and some friends individually own four lots about 3,500 feet east of the eastern end of the reservoir. A tributary to the main stem Bridge Creek traverses the properties. These land owners have approached the City with a proposal to sell two lots to the city, and grant drainage easements on two other lots. Council direction or a sponsor is needed to pursue these opportunities.

### **2022 KPEDD Industry Outlook Forum**

The Kenai Peninsula Economic Development District's annual industry outlook forum is being held on January 6<sup>th</sup> between 8:15am and 3:40pm at the Kenai Visitor's Center. More information is included as an attachment to this report.

### **Community Rec Partners with Library on Sports Gear Lending Program**

Through a collaborative effort with the Community Recreation program, the Sports Gear Library is now available through the Homer Public Library. If you have a library card, similar to checking out a book you can now check out some outdoor recreational equipment. There is a limited quantity and selection of items, but the intent is to encourage community members to get outside to play and recreate. Some items include sleds, ultimate Frisbees, balls, etc. If you do not see any items you are looking for we may be able to assist with connecting you to an organization who may be able to help. This is a free program and we will gladly accept any donated items that are clean, safe and in working condition that could be utilized by other community members.

### **Sister City Update**

Do you have a memorable experience with Homer's Sister City Teshio, Japan that you'd like to share? The Consular Office of Japan in Anchorage is conducting a 'Japan-Alaska Sister Cities Photo + Essay Campaign' on the topic of "a Heartwarming Experience Achieved Through the Japan-Alaska Sister City Exchange." Residents of any age from all municipalities with formal Japan-Alaska sister city relationships are eligible to participate and can even win some great prizes! Submission deadline is February 4, 2022. See the enclosed flyer or visit [https://www.anchorage.us.emb-japan.go.jp/itpr\\_en/11\\_000001\\_00215.html](https://www.anchorage.us.emb-japan.go.jp/itpr_en/11_000001_00215.html) for more information.

### **Kachemak Bay State Park Trail Maintenance Training Grant**

I provided a letter to the Alaska State Trail Program supporting a Recreational Trail Grant application submitted by the Homer Office, Kenai Area of Alaska State Parks for Kachemak Bay State Park. The Letter is included with this report.

### **Personnel Updates**

**Public Works:** Public Works welcomed Pedro Ochoa as its new Building Maintenance Technician I. Pedro, a member of the Alaska Army National Guard's Infantry Airborne, has worked for the City of Homer for multiple years as a temporary employee, first with the PW Water & Sewer Department and most recently with Port & Harbor. Pedro is a graduate of Homer High School and has an Associates of Arts degree from the UAA's Kachemak Bay Campus. Pedro is an elite runner, having represented the National Guard in marathon events across the country.

**Finance:** We are excited to share the news that Tamara Fletcher has joined the Finance team. She previously worked for the Port and Harbor and brings with her several years of accounts payable experience. We are looking forward to how her experience can assist the department in developing clear and easy to follow procedures.

**Port & Harbor:** On December 6th we welcome Del Masterhan as the new Ice Plant/Fish Dock supervisor. Del has a wealth of experience working at sea as Chief Engineer onboard catcher processors as well onshore based industrial refrigeration systems in the fish processing industry. Most recently Del was employed with Ocean Marine Services as their Port Engineer. In that position Del was responsible for the maintenance of the OMSI fleet both while at Sea and served as project manager when the company had their vessels in a shipyard for repairs. Burt and Dell will be busy for the next month working towards this transition and of course making the off season repairs to the plant to make sure it's ready for business next March.

**Administration:** Renee Krause, MMC, Deputy City Clerk was elected to serve a two year term as Treasurer for the Alaska Association of Municipal Clerks (AAMC) at their November Annual Meeting. Renee has served on the AAMC Finance Committee for 6 years and will now take it to the next level and with this important seat on the Executive Board. Congratulations Renee!

Enclosures:

1. Sales tax memo and attachments
2. Map of Potential Bridge Creek Acquisitions
3. KPEDD Industry Outlook Forum Flyer and Agenda
4. Sister City Flyer
5. Trail Grant Letter of Support



# City of Homer

[www.cityofhomer-ak.gov](http://www.cityofhomer-ak.gov)

## Office of the City Manager

491 East Pioneer Avenue  
Homer, Alaska 99603

[citymanager@cityofhomer-ak.gov](mailto:citymanager@cityofhomer-ak.gov)

(p) 907-235-8121 x2222

(f) 907-235-3148

## Memorandum

TO: MAYOR CASTNER AND CITY COUNCIL  
FROM: Andrea Browning  
DATE: December 13, 2021  
SUBJECT: December Employee Anniversaries

---

I would like to take the time to thank the following employees for the dedication, commitment and service they have provided the City and taxpayers of Homer over the years.

<b>Mark Robl</b>	<b>Police</b>	<b>37</b>	<b>Years</b>
<b>Bryan Hawkins</b>	<b>Port</b>	<b>22</b>	<b>Years</b>
<b>Todd Cook</b>	<b>Public Works</b>	<b>12</b>	<b>Years</b>
<b>Sean Perry</b>	<b>Police</b>	<b>7</b>	<b>Years</b>
<b>Mike Zelinski</b>	<b>Public Works</b>	<b>7</b>	<b>Years</b>
<b>Josh Mershon</b>	<b>Port</b>	<b>2</b>	<b>Years</b>
<b>Luis Yoder</b>	<b>Fire</b>	<b>2</b>	<b>Years</b>
<b>Regina Johanos</b>	<b>Library</b>	<b>1</b>	<b>Year</b>



# City of Homer

[www.cityofhomer-ak.gov](http://www.cityofhomer-ak.gov)

Finance Department

491 East Pioneer Avenue  
Homer, Alaska 99603

[finance@cityofhomer-ak.gov](mailto:finance@cityofhomer-ak.gov)

(p) 907-235-8121

(f) 907-235-3140

## Memorandum

TO: Mayor Castner and Homer City Council  
THROUGH: Rob Dumouchel, City Manager  
FROM: Elizabeth Walton, Finance Director  
DATE: December 7, 2021  
SUBJECT: 3<sup>rd</sup> Quarter Sales Tax Analysis

The purpose of this memo is to provide contextual information associated with taxable sales figures for the 3<sup>rd</sup> quarter of calendar year 2021 (now 1<sup>st</sup> quarter of fiscal year 2022 with the change in City fiscal year which went into effect on July 1, 2021). Also provided in this memo is an analysis of sales tax revenue received to date for Fiscal Year 2022.

### **Basic Sales Tax Information:**

Sales tax is one of the primary drivers of revenue for the General Fund as it represents roughly 46% of total projected revenue for the FY22 budget. Consumers in Homer pay a sales tax rate of 7.85%. Of that, 3% goes to the Kenai Peninsula Borough while the other 4.85% is remitted to the City of Homer. The majority of City sales tax (3%) collected goes to the General Fund to cover the expenses associated with providing core services. Other dedicated purposes of the City of Homer share of sales tax are as follows: HART (0.75%), HAWSP (0.75%), Public Safety Operations and Infrastructure (0.35%).

<b>Sales Tax Destination</b>	<b>Sales Tax Amount Charged to Consumers*</b>
<b>Kenai Peninsula Borough</b>	3%
<b>Homer General Fund</b>	3%
<b>Homer Accelerated Roads and Trails</b>	.75%
<b>Homer Accelerated Water and Sewer Program</b>	.75%
<b>Homer Police Station</b>	.35%

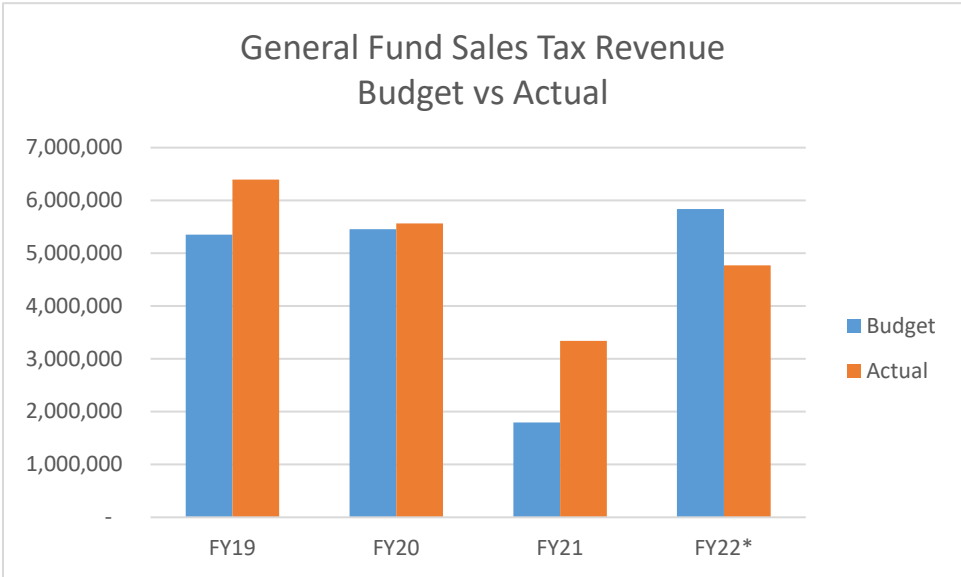
\*Sales tax is only charged on the first \$500 of a single purchase

An important reminder is that the City of Homer does not collect sales tax directly. The City elects for the Kenai Peninsula Borough to collect, administer and then remit sales tax revenue to us. KPB remits sales tax revenue to the City on a monthly basis, but there is a two month "lag" in the revenue received. This means that the revenue that is received by the City in one month is not a reflection on sales tax actually earned in that particular month. Finance

makes an accounting entry at the end of the year to adjust for this delay. This is important to keep in mind when comparing sales tax revenue received vs. taxable sales.

**General Fund Sales Tax Revenue Analysis:**

The General Fund budgeted sales tax for FY22 is \$5,837,403, with an additional \$207,225 budgeted for remote sales tax. Actual current data for FY22 (July 1, 2021 – November 30, 2021) reports that the City has received \$4,771,119 in sales tax and \$69,033 in remote sales tax. It looks realistic for the City to exceed budget expectations for FY22 as the General Fund has already received 82% of budgeted sales tax. If current trends continue, the City should have no issue meeting remote sales tax budget expectations for FY22, as the General Fund has received 33% of budgeted remote sales tax.



**\*FY22 data is reflective of sales tax revenue received July – November 2021.**

**Enclosures:**

Accompanying this memo are four documents to help provide context to the historical trends associated with sales tax revenue.

Attachment A provides a data set of Line of Business (LOB) taxable sales for the 3<sup>rd</sup> quarter going back to 2016. The LOB categories are determined and reported by the Kenai Peninsula Borough. The biggest dollar share in taxable sales has historically come from the Retail Trade sector and this quarter is no different. This sector experienced a 20% increase comparative to the 3<sup>rd</sup> quarter in 2020 and a 21% increase over 2019. Most of the sectors tied closely with the tourism industry rebounded in 2021 comparative to 2020 and came back in line (and above) with taxable sales in 2019. Overall, the City experienced a roughly 34% increase in taxable sales comparative to the 3<sup>rd</sup> quarter in 2020 and a 22% increase over 2019.

Attachment B provides a data set comparing the LOB taxable sales on a quarterly basis back to 2017.

Attachment C provides a data set of sales tax revenue collected on a quarterly basis going back to 2017. The sales tax data is broken out by the funds that received a portion of the total revenue. One thing to note is that HART sales tax was diverted into the General Fund for

fiscal years 2016-2018. In 2019, HART began receiving their respective share of the overall revenue. Also to note in 2019, the sales tax rate increased to fund debt service payments and maintenance of the police station facility.

Attachment D provides a data set of sales tax revenue collected in the 3<sup>rd</sup> and 4<sup>th</sup> quarters of each calendar year going back to 2016. The purpose of this chart is to provide current fiscal year to date sales tax revenue comparison with previous years using the same time interval (July – December).



**Attachment A**

3rd Quarter LOB Taxable Sales  
Presented November 18, 2021

	2016	2017	2018	2019	2020	2021	% Δ 2021 - 2020	% Δ 2021 - 2019
ADMINISTRATIVE, WASTE MAN	401,661	336,793	204,971	202,322	162,542	317,064	95%	57%
AGRICULTURE, FORESTRY, FI	144,270	205,859	234,217	202,286	187,204	221,045	18%	9%
ARTS AND ENTERTAINMENT	677,310	674,135	737,507	731,228	477,017	879,483	84%	20%
CONSTRUCTION CONTRACTING	486,586	381,548	385,926	336,222	397,914	473,646	19%	41%
EDUCATIONAL SERVICES	47,609	53,633	55,190	75,184	44,879	52,725	17%	-30%
FINANCE AND INSURANCE	16,893	28,566	25,924	29,481	40,410	22,441	-44%	-24%
GUIDING LAND	132,975	169,829	228,047	258,602	79,186	188,069	138%	-27%
GUIDING WATER	6,225,895	6,158,152	6,061,804	5,988,975	4,822,074	9,582,806	99%	60%
HEALTH CARE AND SOCIAL AS	131,576	134,541	80,786	45,090	28,941	112,550	289%	150%
HOTEL/MOTEL/BED & BREAKFA	7,026,750	7,153,924	7,518,922	8,375,973	6,389,397	10,468,820	64%	25%
INFORMATION	1,108,504	1,093,603	1,031,736	1,037,924	935,171	716,705	-23%	-31%
MANAGEMENT OF COMPANIES	-	-	-	311,026	-	-	0	-100%
MANUFACTURING	581,747	633,841	641,802	715,234	687,424	850,127	24%	19%
MINING/QUARRYING	-	-	150	10,926	26,838	42,077	57%	285%
PROFESSIONAL, SCIENTIFIC	732,636	771,398	770,672	761,163	823,623	819,924	0%	8%
PUBLIC ADMINISTRATION	2,150,884	2,560,676	2,458,720	2,845,900	3,105,875	2,921,998	-6%	3%
REMEDIAION SERVICES	-	-	-	-	-	-	0%	0%
RENTAL COMMERCIAL PROPERT	63,881	101,707	130,158	95,207	81,163	92,538	14%	-3%
RENTAL NON-RESIDENTAL PRO	256,561	246,013	238,829	234,955	129,139	201,955	56%	-14%
RENTAL OF SELF-STORAGE &	643,544	561,005	528,323	537,757	570,643	683,119	20%	27%
RENTAL PERSONAL PROPERTY	229,364	242,233	259,883	229,691	216,695	287,696	33%	25%
RENTAL RESIDENTAL PROPERT	1,799,042	1,835,339	1,880,675	1,834,018	1,708,348	2,044,382	20%	11%
RESTAURANT/BAR	8,195,446	8,780,547	9,542,688	9,553,633	6,529,920	11,337,427	74%	19%
RETAIL TRADE	29,665,962	30,421,714	34,053,544	34,490,183	34,754,701	41,805,658	20%	21%
SERVICES	2,202,016	2,645,475	2,305,938	2,586,137	2,465,235	2,980,616	21%	15%
TELECOMMUNICATIONS	419,879	428,326	511,781	332,138	468,600	495,505	6%	49%
TELECOMMUNICATIONS-CABLE	235	1,811	1,305	691	809	2,386	195%	245%
TIMBERING	-	430	-	-	-	-	0%	0%
TRANSPORTATION AND WAREHO	1,110,780	1,569,692	1,545,966	1,410,586	1,072,654	1,918,578	79%	36%
UTILITIES	1,602,262	1,795,759	1,757,390	1,727,760	1,812,700	1,958,574	8%	13%
WHOLESALE TRADE	193,516	214,032	298,755	280,016	291,360	295,931	2%	6%
<b>TOTAL</b>	<b>66,247,784</b>	<b>69,200,581</b>	<b>73,491,609</b>	<b>75,240,308</b>	<b>68,310,460</b>	<b>91,773,846</b>	<b>34%</b>	<b>22%</b>
<b>Applied Sales Tax 4.85%*</b>	<b>3,213,018</b>	<b>3,356,228</b>	<b>3,564,343</b>	<b>3,649,155</b>	<b>3,313,057</b>	<b>4,451,032</b>	<b>1,137,974</b>	<b>801,877</b>

\*Effective January 1, 2019 the sales tax rate for the City of Homer was increased from 4.5% to 4.85%. The applied rate of 4.85% is used here for comparison puposes only. This value is derived by mutiplying the total taxable sales by the sales tax rate.

This chart represents taxable sales that are collected by KPB and does not include taxable sales collected by ARSSTC.

**Attachment B**  
Quarterly LOB Taxable Sales  
Presented November 18, 2021

	Q1 2017	Q2 2017	Q3 2017	Q4 2017	Q1 2018	Q2 2018	Q3 2018	Q4 2018	Q1 2019	Q2 2019	Q3 2019	Q4 2019	Q1 2020	Q2 2020	Q3 2020	Q4 2020	Q1 2021	Q2 2021	Q3 2021
ADMINISTRATIVE, WASTE MAN	207,412	305,688	336,793	164,649	155,528	203,986	204,971	155,250	136,996	211,749	202,322	166,876	126,571	115,955	162,542	152,225	158,366	200,697	317,064
AGRICULTURE, FORESTRY, FI	14,600	144,996	205,859	49,869	33,710	203,853	234,217	37,022	640,248	160,020	202,286	44,149	18,712	111,415	187,204	41,097	18,509	163,842	221,045
ARTS AND ENTERTAINMENT	249,016	472,227	674,135	328,352	249,287	501,469	737,507	277,357	253,475	548,940	731,228	303,677	216,312	165,688	477,017	145,134	147,074	514,908	879,483
CONSTRUCTION CONTRACTING	484,978	438,379	381,548	372,787	315,934	409,170	385,926	386,079	333,640	373,100	336,222	364,590	367,431	392,005	397,914	487,741	491,123	416,849	473,646
EDUCATIONAL SERVICES	71,272	52,994	53,633	66,973	61,687	54,866	55,190	78,859	58,316	56,928	75,184	90,528	72,931	42,283	44,879	58,566	53,019	44,623	52,725
FINANCE AND INSURANCE	19,204	23,980	28,566	30,128	27,385	25,820	25,924	27,189	28,275	36,654	29,481	26,563	26,553	19,785	40,410	25,265	24,390	25,729	22,441
GUIDING LAND	-	94,324	169,829	5,898	-	105,778	228,047	-	-	125,677	258,602	-	-	42,822	79,186	477	-	88,796	188,069
GUIDING WATER	36,497	2,697,548	6,158,152	117,984	79,447	2,869,368	6,061,804	134,694	187,753	2,985,820	5,988,975	120,809	110,697	1,359,274	4,822,074	193,829	274,578	4,896,767	9,582,806
HEALTH CARE AND SOCIAL AS	77,243	126,554	134,541	54,418	80,890	95,062	80,786	50,658	78,958	62,473	45,090	38,063	21,795	15,422	28,941	16,437	11,280	52,394	112,550
HOTEL/MOTEL/BED & BREAKFA	1,532,096	4,558,923	7,153,924	1,641,953	1,490,223	4,422,516	7,518,922	1,455,582	1,543,084	4,629,194	8,375,973	1,734,109	1,279,481	2,828,851	6,389,397	1,710,573	1,865,239	6,938,219	10,468,820
INFORMATION	1,020,993	1,084,186	1,093,603	985,693	972,981	1,061,677	1,031,736	1,008,965	984,852	978,052	1,037,924	992,162	983,669	883,165	935,171	710,741	669,902	747,268	716,705
MANAGEMENT OF COMPANIES	-	-	-	-	-	-	-	-	-	126,214	311,026	-	-	10,508	-	-	-	-	-
MANUFACTURING	225,385	503,806	633,841	318,410	249,843	530,866	641,802	339,803	281,903	756,819	715,234	406,462	344,961	505,214	687,424	428,970	417,190	713,612	850,127
MINING/QUARRYING	500	-	-	-	-	-	150	150	150	1,150	10,926	19,981	3,220	14,961	26,838	21,611	3,618	28,586	42,077
PROFESSIONAL, SCIENTIFIC	698,422	708,767	771,398	700,387	691,012	756,620	770,672	680,434	648,929	785,571	761,163	635,037	702,504	767,048	823,623	763,313	856,513	857,983	819,924
PUBLIC ADMINISTRATION	1,100,933	1,309,629	2,560,676	999,094	816,016	1,427,693	2,458,720	1,143,132	829,928	1,432,737	2,845,900	1,022,188	971,581	1,368,423	3,105,875	874,562	866,942	1,466,313	2,921,998
REMEDICATION SERVICES	32,666	-	-	-	38,717	-	-	-	33,767	-	-	-	-	-	-	-	-	-	-
RENTAL COMMERCIAL PROPERT	58,558	96,775	101,707	61,466	69,250	85,800	130,158	64,428	196,565	99,765	95,207	60,191	58,935	80,696	81,163	71,944	62,633	72,545	92,538
RENTAL NON-RESIDENTIAL PRO	128,347	180,793	246,013	146,382	144,070	187,303	238,829	148,707	138,064	184,240	234,955	126,417	92,816	90,896	129,139	96,490	89,296	155,709	201,955
RENTAL OF SELF-STORAGE &	201,259	248,428	561,005	284,593	232,561	265,933	528,323	276,934	217,415	272,863	537,757	294,635	231,287	271,739	570,643	322,683	230,502	289,507	683,119
RENTAL PERSONAL PROPERTY	138,081	197,202	242,233	150,791	148,701	210,142	259,883	157,676	141,046	221,419	229,691	174,262	165,835	194,678	216,695	192,495	172,735	214,495	287,696
RENTAL RESIDENTIAL PROPERT	1,035,396	1,512,623	1,835,339	1,140,120	1,146,434	1,638,398	1,880,675	1,089,752	1,077,295	1,632,238	1,834,018	1,116,156	1,101,887	1,402,570	1,708,348	1,140,114	1,085,363	1,703,802	2,044,382
RESTAURANT/BAR	2,787,404	6,211,565	8,780,547	3,337,515	3,101,373	6,773,895	9,542,688	3,482,700	3,179,549	6,848,886	9,553,633	3,501,273	2,514,895	3,762,292	6,529,920	2,851,904	2,841,878	8,170,597	11,337,427
RETAIL TRADE	12,505,192	24,992,523	30,421,714	15,948,127	12,769,708	27,043,054	34,053,544	17,314,037	14,151,272	29,033,873	34,490,183	18,463,774	15,612,943	27,598,497	34,754,701	20,013,292	17,584,839	34,839,450	41,805,658
SERVICES	1,799,351	2,703,585	2,645,475	2,078,565	1,894,742	2,768,109	2,305,938	2,071,964	1,749,725	2,701,456	2,586,137	2,001,089	1,608,833	2,196,866	2,465,235	2,059,134	1,742,283	2,875,372	2,980,616
TELECOMMUNICATIONS	408,560	430,719	428,326	440,014	449,669	469,468	511,781	534,464	401,118	337,618	332,138	334,477	335,461	440,569	468,600	462,880	446,343	490,947	495,505
TELECOMMUNICATIONS-CABLE	627	642	1,811	2,771	574	1,202	1,305	519	495	6,282	691	429	861	516	809	1,932	694	1,389	2,386
TIMBERING	500	-	430	-	-	-	-	500	505	-	-	-	-	-	-	-	-	-	-
TRANSPORTATION AND WAREHO	190,285	780,040	1,569,692	178,728	177,563	853,236	1,545,966	168,374	196,800	925,578	1,410,586	165,792	195,409	347,778	1,072,654	252,295	201,873	1,209,752	1,918,578
UTILITIES	2,322,217	1,992,650	1,795,759	2,156,588	2,445,497	2,058,123	1,757,390	2,045,862	2,503,521	2,114,934	1,727,760	2,028,860	2,710,459	2,197,539	1,812,700	2,365,856	2,683,123	2,348,284	1,958,574
WHOLESALE TRADE	262,379	317,823	214,032	421,454	325,567	355,069	298,755	355,568	296,494	398,831	280,016	223,920	273,328	338,319	291,360	208,920	303,219	450,299	295,931
<b>TOTAL</b>	<b>27,609,373</b>	<b>52,187,369</b>	<b>69,200,581</b>	<b>32,183,709</b>	<b>28,168,369</b>	<b>55,378,476</b>	<b>73,491,609</b>	<b>33,486,659</b>	<b>30,290,138</b>	<b>58,049,081</b>	<b>75,240,308</b>	<b>34,456,469</b>	<b>30,149,367</b>	<b>47,565,777</b>	<b>68,310,460</b>	<b>35,670,480</b>	<b>33,302,524</b>	<b>69,978,734</b>	<b>91,773,846</b>
<b>Applied Sales Tax 4.85%*</b>	<b>1,339,055</b>	<b>2,531,087</b>	<b>3,356,228</b>	<b>1,560,910</b>	<b>1,366,166</b>	<b>2,685,856</b>	<b>3,564,343</b>	<b>1,624,103</b>	<b>1,469,072</b>	<b>2,815,380</b>	<b>3,649,155</b>	<b>1,671,139</b>	<b>1,462,244</b>	<b>2,306,940</b>	<b>3,313,057</b>	<b>1,730,018</b>	<b>1,615,172</b>	<b>3,393,969</b>	<b>4,451,032</b>

\*Effective January 1, 2019 the sales tax rate for the City of Homer was increased from 4.5% to 4.85%. The applied rate of 4.85% is used here for comparison purposes only. This value is derived by multiplying the total taxable sales by the sales tax rate.

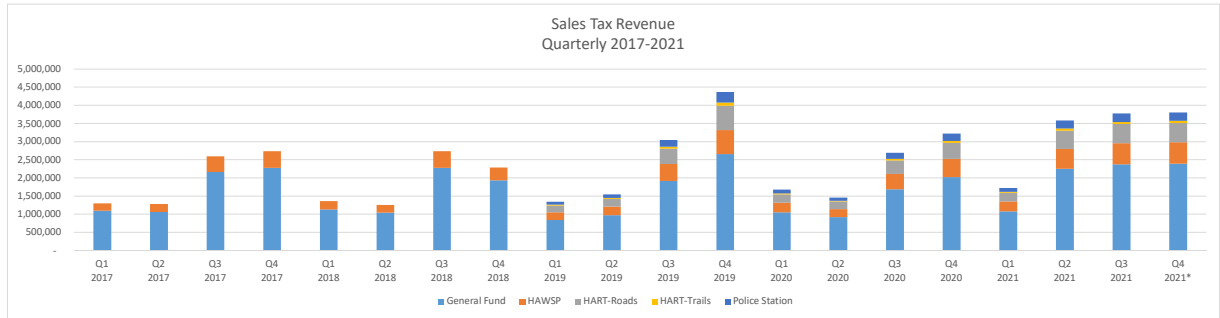
This chart represents taxable sales that are collected by KPB and does not include taxable sales collected by ARSSTC.

**Attachment C**

Quarterly Sales Tax Revenue

Presented December 13, 2021

	Q1 2017	Q2 2017	Q3 2017	Q4 2017	Q1 2018	Q2 2018	Q3 2018	Q4 2018	Q1 2019	Q2 2019	Q3 2019	Q4 2019	Q1 2020	Q2 2020	Q3 2020	Q4 2020	Q1 2021	Q2 2021	Q3 2021	Q4 2021*
General Fund	1,098,377	1,068,738	2,167,895	2,282,295	1,136,958	1,049,686	2,285,324	1,937,016	848,744	972,481	1,917,010	2,656,754	1,058,824	921,925	1,694,506	2,026,245	1,085,933	2,257,774	2,375,582	2,395,537
HAWSP	203,692	213,799	433,683	456,366	227,446	209,988	457,167	349,894	208,708	239,135	471,396	663,850	260,367	226,703	416,682	498,129	267,033	546,802	584,159	589,067
HART-Roads	-	-	-	-	-	-	-	-	187,837	215,221	424,256	675,890	234,330	204,033	375,014	448,446	240,329	500,650	525,744	530,160
HART-Trails	-	-	-	-	-	-	-	-	20,871	23,913	47,140	81,879	26,037	22,670	41,668	49,942	26,703	63,208	58,416	58,907
Police Station	-	-	-	-	-	-	-	-	83,483	95,654	188,558	297,006	104,147	90,681	166,673	199,252	106,813	218,721	233,664	235,627
<b>Total</b>	<b>\$ 1,302,069</b>	<b>\$ 1,282,537</b>	<b>\$ 2,601,579</b>	<b>\$ 2,738,660</b>	<b>\$ 1,364,404</b>	<b>\$ 1,259,673</b>	<b>\$ 2,742,491</b>	<b>\$ 2,286,910</b>	<b>\$ 1,349,642</b>	<b>\$ 1,546,404</b>	<b>\$ 3,048,360</b>	<b>\$ 4,375,378</b>	<b>\$ 1,683,704</b>	<b>\$ 1,466,011</b>	<b>\$ 2,694,542</b>	<b>\$ 3,222,014</b>	<b>\$ 1,726,812</b>	<b>\$ 3,587,155</b>	<b>\$ 3,777,565</b>	<b>\$ 3,809,297</b>



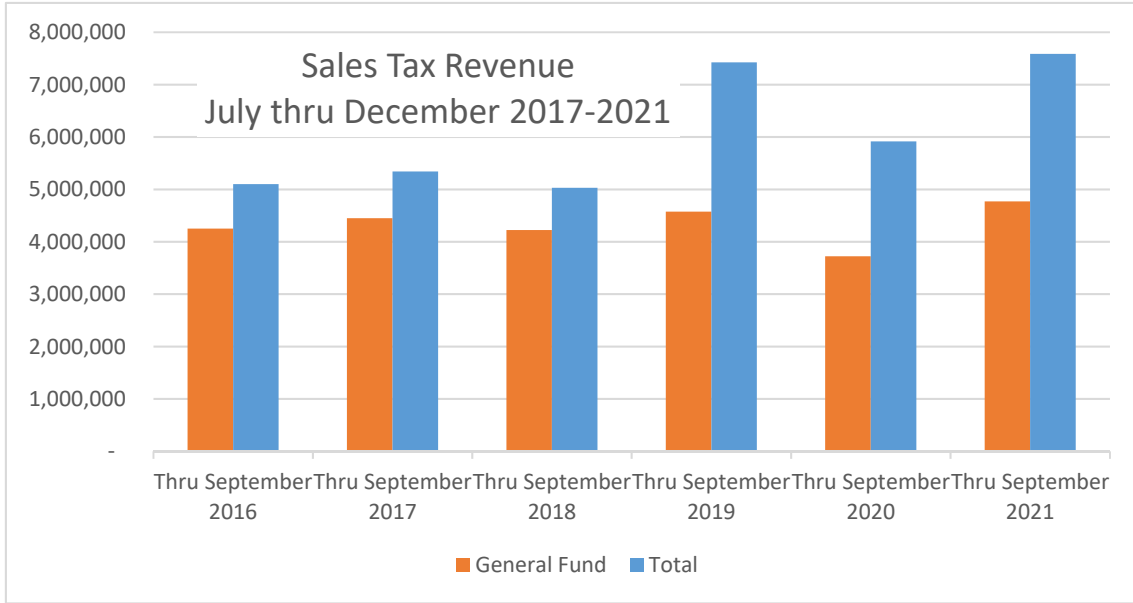
**Key Points:**  
 - HART Sales Tax was diverted into the General Fund from 2016-2018  
 - Sales Tax increased in 2019 to fund debt service payments associated with Police Station bond

\*Q4 2021 - Sales Tax Revenue thru 11/30/21

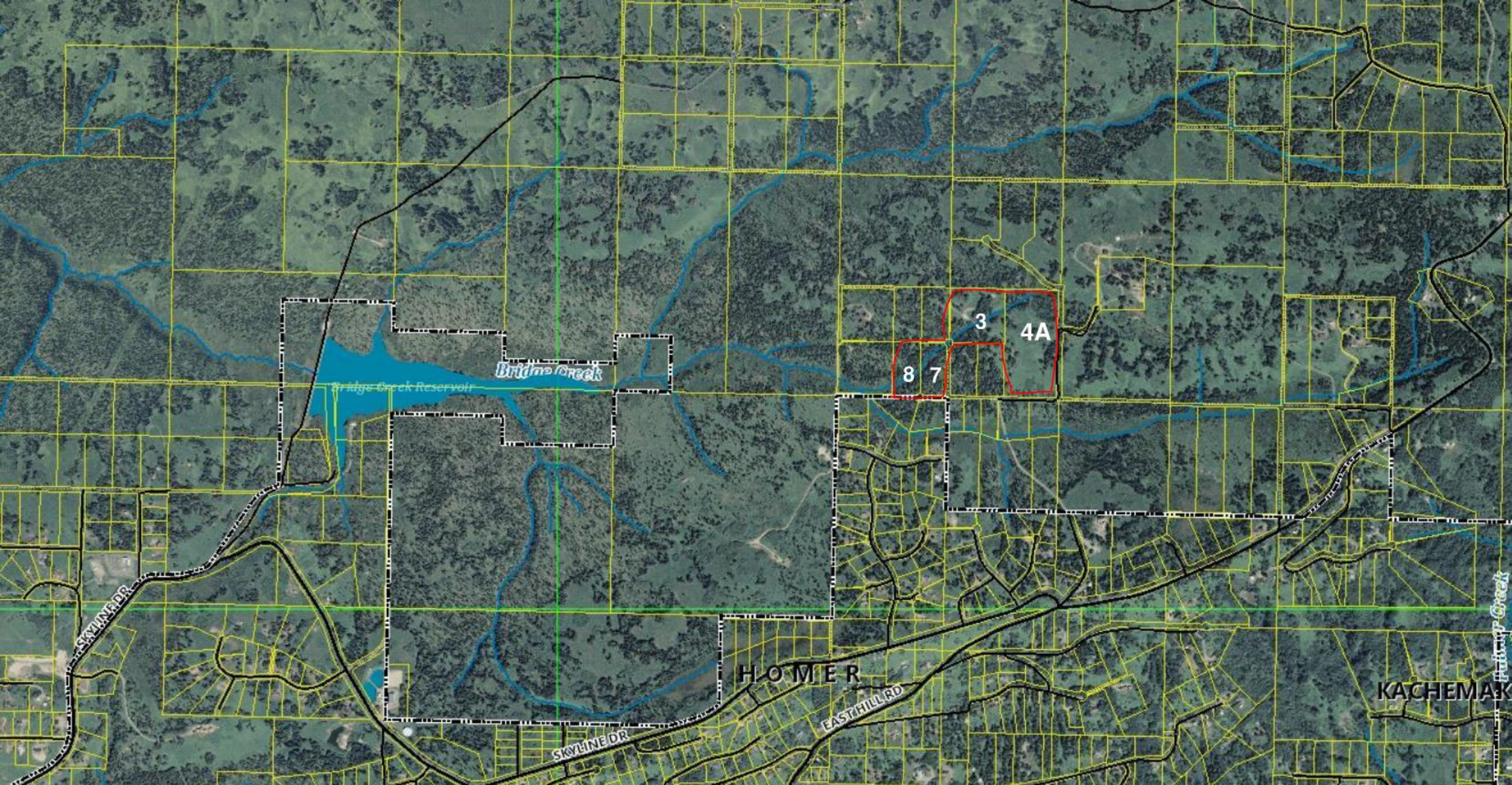
## Attachment D

FY22 YTD Sales Tax Revenue  
Presented December 13, 2021

	Q3 & Q4 2016	Q3 & Q4 2017	Q3 & Q4 2018	Q3 & Q4 2019	Q3 & Q4 2020	FY22 YTD*
General Fund	4,249,316	4,450,190	4,222,340	4,573,763	3,720,751	4,771,119
HAWSP	850,174	890,049	807,061	1,135,245	914,811	1,173,226
HART-Roads	-	-	-	1,100,146	823,459	1,055,903
HART-Trails	-	-	-	129,019	91,611	117,323
Police Station	-	-	-	485,564	365,924	469,290
<b>Total</b>	<b>5,099,489</b>	<b>5,340,239</b>	<b>5,029,401</b>	<b>7,423,738</b>	<b>5,916,556</b>	<b>7,586,862</b>



\*FY22 YTD - represents sales tax revenue received July - November 2021



Bridge Creek

Bridge Creek Reservoir

8

3

4A

7

HOMER

EAST HILL RD

SKYLINE DR

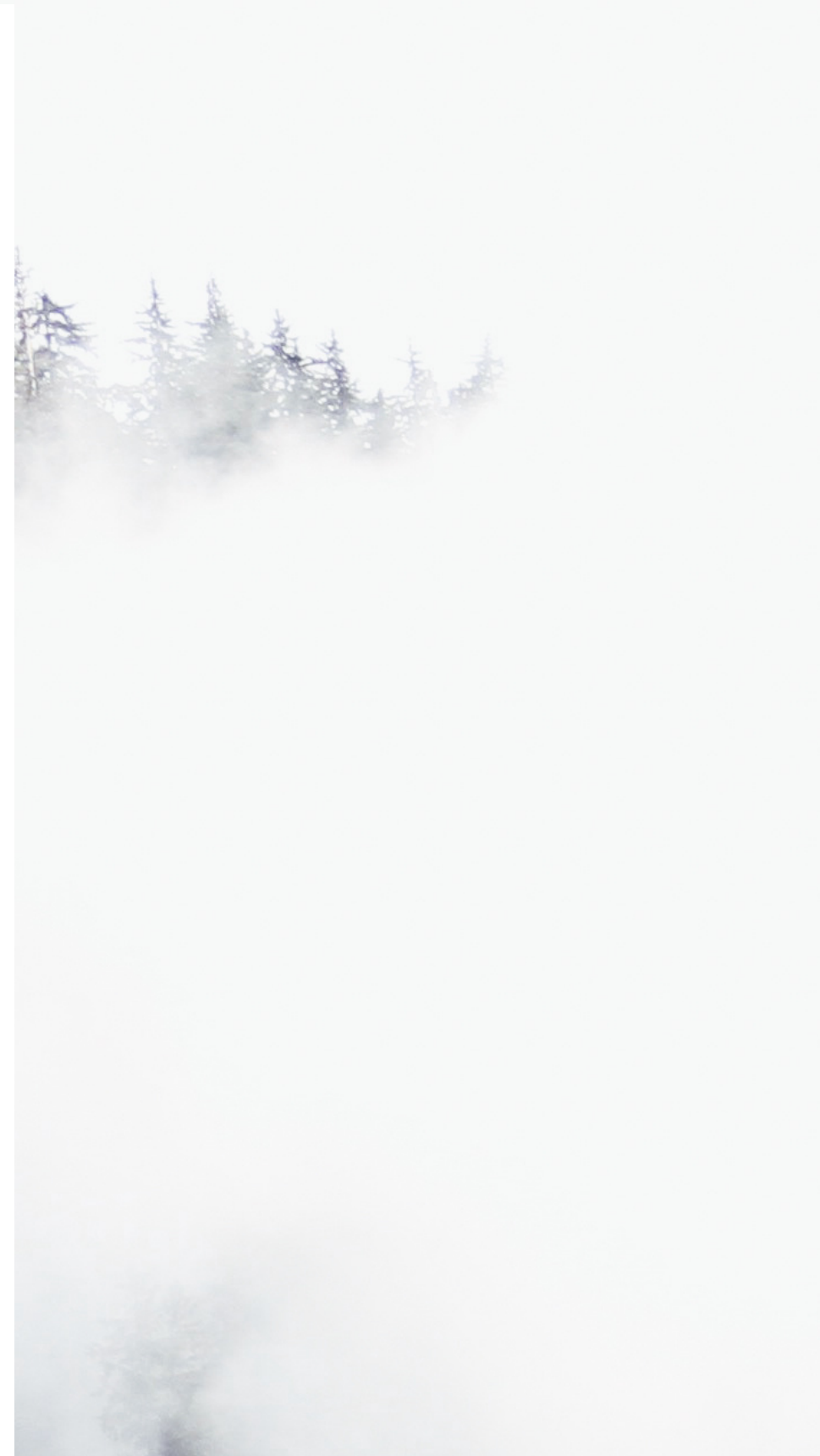
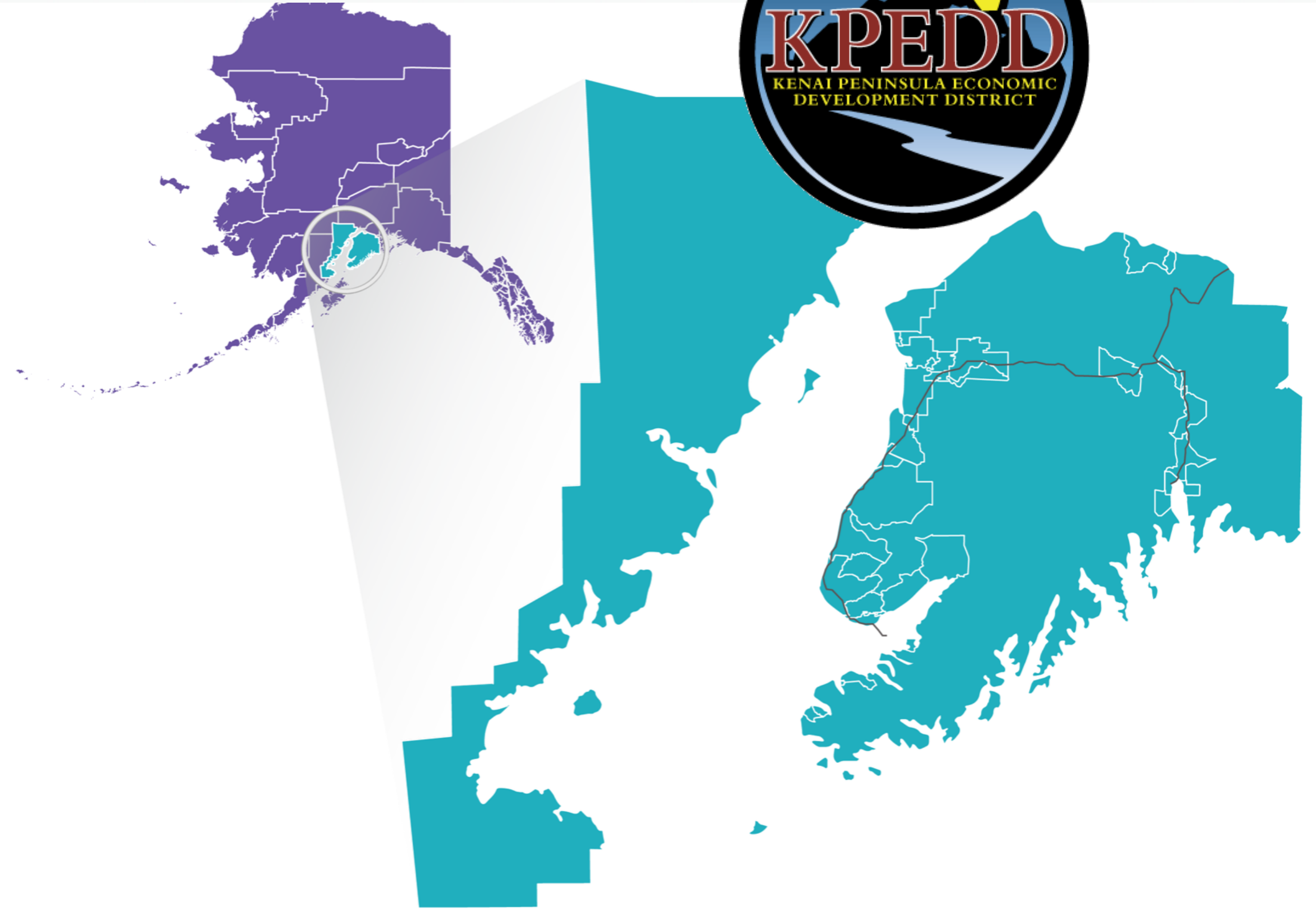
KACHEMAK

SKYLINE DR

Bridge Creek

# KPEDD 2022

## INDUSTRY OUTLOOK FORUM



KENAI VISITOR'S  
CENTER

JANUARY 6TH, 2022

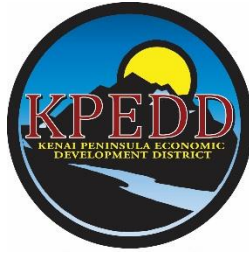
8:15AM-3:40PM

KENAI, ALASKA

REGISTER HERE:

[HTTPS://FORMS.GLE/BKX83NDHOM](https://forms.gle/BKX83NDHOM878W22A)

[878W22A](https://forms.gle/BKX83NDHOM878W22A)



## 2022 INDUSTRY OUTLOOK FORUM

HOSTED BY

**Kenai Peninsula Economic Development District**  
**And Supported By**

**Cities and Chambers of Commerce of:**  
**Kenai, Soldotna, Homer, and Seward**

**Thursday, January 6<sup>th</sup>, 2022 – Kenai Chamber of Commerce in Kenai, Alaska**

8:15	<b>Registration &amp; Continental Breakfast</b>	30 min
8:45 - 8:50	<b>Safety Minute</b> <i>Brittany Brown, Executive Director of the Kenai Chamber</i>	5 min
8:50 – 8:55	<b>Pledge of Allegiance &amp; Overview of the Day</b> <i>Tim Dillon, Executive Director of KPEDD</i>	5 min
8:55 – 9:05	<b>Welcome &amp; Update</b> <i>Brian Gabriel, Mayor of Kenai</i>	10 min
9:05 – 9:20	<b>Regional Real Estate Update:</b> <i>Dale Bagely, President Elect Alaska Association of Realtors</i>	15 min
9:20 – 9:50	<b>Tourism Update:</b> <i>Sarah Leonard, CEO Alaska Travel Industry Association (ATIA)</i>	30 min
9:50 – 10:10	<b>State of Alaska Marine Highway System Update:</b> <i>Robert Venebles, Executive Director Southeast Conference</i>	20 min
10:10 – 10:20	<b>Networking Break</b>	10 min
10:20 – 10:40	<b>Medical Services Impact on the Economy:</b> <i>Jared Kosin, President and CEO, Alaska State Hospital and Nursing Home Association</i>	20 min
10:40 – 11:10	<b>Transition and Succession Planning for Businesses:</b> <i>Jon Bittner, Executive Director Alaska Small Business and Development Center (AKSBDC)</i>	30 min

11:10 – 11:35	<b>KPEDD Resources and Business Resiliency Program:</b> Cassidi Cameron, Kenai Peninsula Development District	25min
11:35-11:40	<b>Central Peninsula Young Professionals:</b> Kim Sparacio, Monique Burgin	5 min.
11:40 – 12:00	<b>Hilcorp Update:</b> Vanessa Hughes, Asset Team Leader	20 min
12:00 – 1:00	<b>Lunch: <i>The Kenai Peninsula Solar Farm</i></b> Brad Janorschke, General Manager Homer Electric Association Jenn Miller, Chief Executive Officer Renewable IPP CEO	1 hr
1:00 – 1:20	<b>Alaska Manufacturing:</b> Alyssa Rodrigues, Director	20 min
1:20 – 1:40	<b>Mariculture Update:</b> Julie Decker, Executive Director Alaska Fisheries De- velopment Foundation	20 min
1:40 – 1:50	<b>Networking Break</b>	10 min
1:50 – 2:10	<b>Kenai Peninsula Borough Land Management Update:</b> Marcus Mueller, Land Management Officer	20 min
2:10 – 2:40	<b>Gas and Oil Update:</b> Kara Moriarty, CEO Alaska Oil and Gas Association	30 min
2:40 – 3:10	<b>Statewide CEDS and Economy Update:</b> Nolan Klouda, Executive Director University Of Alaska Center for Economic Development	30 min
3:10 – 3:30	<b>Allutiiq Pride Marine Institute – An introduction:</b> Jeff Hetrick, APMI Director	20 min
3:30 – 3:40	<b>KPEDD Upcoming Events and Closing</b> Tim Dillon, Executive Director	10 min



# THE CONSULAR OFFICE OF JAPAN IN ANCHORAGE

Presents:

## JAPAN-ALASKA SISTER CITIES PHOTO + ESSAY CAMPAIGN



Eligibility	Submission	Deadline
<p>Residents from municipalities with Japan-Alaska sister city relationships are eligible to participate.</p> <p>There will be an 'adult' category (19 and over) and a 'youth' category (under 19).</p>	<p>1-5 photos and an essay About 100-1000 words long (English)</p>	<p>12:00 pm on February 4, 2022 (Alaska time)</p>

For more information on eligibility and submission guidelines, please see the Consular Office's homepage:

[https://www.anchorage.us.emb-japan.go.jp/itpr\\_en/11\\_000001\\_00215.html](https://www.anchorage.us.emb-japan.go.jp/itpr_en/11_000001_00215.html)





## City of Homer

[www.cityofhomer-ak.gov](http://www.cityofhomer-ak.gov)

## Office of the City Manager

491 East Pioneer Avenue  
Homer, Alaska 99603

[citymanager@cityofhomer-ak.gov](mailto:citymanager@cityofhomer-ak.gov)

(p) 907-235-8121 x2222

(f) 907-235-3148

Alaska State Trail Program  
RTP Grant Administrators  
550 W. 7<sup>th</sup> Ave, Suite 1380  
Anchorage AK 99501-3561

To Whom It May Concern,

I am writing to express the City of Homer's support for the Recreational Trail Grant proposal/application submitted by the Homer Office, Kenai Area of Alaska State Parks for Kachemak Bay State Park.

The trails in Kachemak Bay State Park are highly valued by the people of Homer. Trail Maintenance Trainings will be a highly prized educational opportunity for the citizens of Homer. The knowledge the members of this training will benefit not only volunteers of the Park, but also volunteers who contribute their time and energy to trails in and around Homer.

I encourage the approval of this application to fund Trail Maintenance Training submitted by Kachemak Bay State Park. Thank you for taking the time to consider this important project.

Sincerely,

Rob Dumouchel  
City Manager