



City of Homer

www.cityofhomer-ak.gov

Office of the City Clerk

491 East Pioneer Avenue

Homer, Alaska 99603

clerk@cityofhomer-ak.gov

(p) 907-235-3130

(f) 907-235-3143

Memorandum Supplemental Packet

TO: MAYOR CASTNER AND HOMER CITY COUNCIL
FROM: RENEE KRAUSE, MMC, DEPUTY CITY CLERK
DATE: NOVEMBER 14, 2022
SUBJECT: SUPPLEMENTAL PACKET

ANNOUNCEMENTS / PRESENTATIONS / REPORTS

Borough Report

Memorandum re: Central Peninsula Landfill - Landfill Gas to Energy Update

page 3

Memorandum re: South Peninsula Future Inert Waste Landfill Search

CITY MANAGER'S REPORT

Transportation Planning at KBC November 9, 2022 – Picture of Attendance

page 7

Kenai Peninsula Borough

Solid Waste Department

MEMORANDUM

TO: Brent Johnson, Assembly President
Members, Kenai Peninsula Borough Assembly

THRU: Mike Navarre, Mayor

FROM: Lee Frey, Solid Waste Director

DATE: October 14, 2022

RE: Central Peninsula Landfill – Landfill Gas to Energy Update

The Homer Electric Association (HEA) received grant from the Alaska Energy Authority for the KPB CPL Landfill Gas Combined Heat & Power Project in the amount of \$884,986 with HEA providing a match of \$221,247 for a total of \$1,106,223. These are design funds only and proposed for developing construction documents for a landfill gas collection system and a 1.6 MW generator capable of using landfill gas. The waste heat coming off the generator would be captured and directed to the leachate evaporator to further reduce gas consumption requirements.

Since HEA has received the grant, we have been in discussion about developing the scope of work for the project. I have been contacting other landfills in regards to their benefits and issues with similar projects using landfill gas for power generation and capturing the waste heat for evaporation. A major item in this project will be developing the agreement between the Borough and HEA in regards to the financial terms that make it a success for both parties. Although landfill and power company management structures vary across the country, I have been unable to find a group with a similar arrangement to our proposal.

We will continue to move forward with design of the project with the future goal of seeking funding for construction. We will also continue discussions on operational and financial terms that will make this future project a success for the Borough and HEA.

Please contact me for any questions or additional information.

Kenai Peninsula Borough

Solid Waste Department

MEMORANDUM

TO: Brent Johnson, Assembly President
Members, Kenai Peninsula Borough Assembly

THRU: Mike Navarre, Mayor
Robert Ruffner, Planning Director

FROM: Lee Frey, Solid Waste Director

DATE: October 14, 2022

RE: South Peninsula Future Inert Waste Landfill Search

The Solid Waste Department in cooperation with the Planning Department has been reviewing several properties in the southern peninsula for future development of a new inert waste monofill. Inert waste is commonly known as construction or demolition debris. The monofill at the Homer Transfer site is estimated to have 6-7 years of life remaining before closure and we desire to have a site permitted and constructed before the active cell is full.

Suitable land for an inert waste cell can be difficult to locate. Ideally the property has relatively deep ground water, separation from surface water and wetlands, provides a significantly large area for development providing a long lifespan and allows us to have a source for cover material onsite. From a fiscal perspective, the property would be located close to the highway and utilities, already be owned by the Borough and be close to the population centers it serves. Sites in already developed residential or recreational areas could be problematic during permitting and public comment.

While there are several potential locations we reviewed, we have identified Parcel #16910153 that is owned by the Borough, off of Ibenson Road in Anchor Point as a site for further investigation. The 80 acre parcel has minor development around it and there are adjacent properties that may allow a larger footprint, if acquired. A map with the proposed parcel highlighted is included.

With operating funds already allocated in the FY23 Homer Transfer Facility budget, we will proceed with geotechnical and groundwater investigation at the site to further determine suitability. Please contact me for any questions or

Page -2-

10/14/22

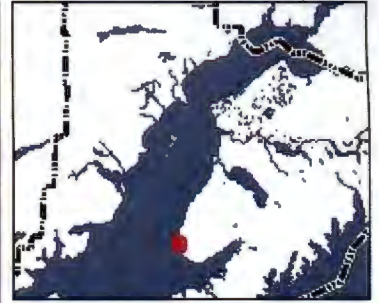
To: Brent Johnson, Assembly President, Member, Kenai Peninsula Borough
Assembly

RE: South Peninsula Future Inert Waste Landfill Search

information.



Parcel #16910153



Legend

- Mileposts
- City Limits
- Highways
- Major Roads
- Roads
 - Town Medium Volume
 - Town Low/Seasonal; Other
 - Proposed
- Parcels

This map is a user generated static output from an Internet mapping site and is for reference only. Data layers that appear on this map may or may not be accurate, current, or otherwise reliable. It is not to be used for navigation.

Notes

11/9/22 Transportation Plan Meeting at KBC

