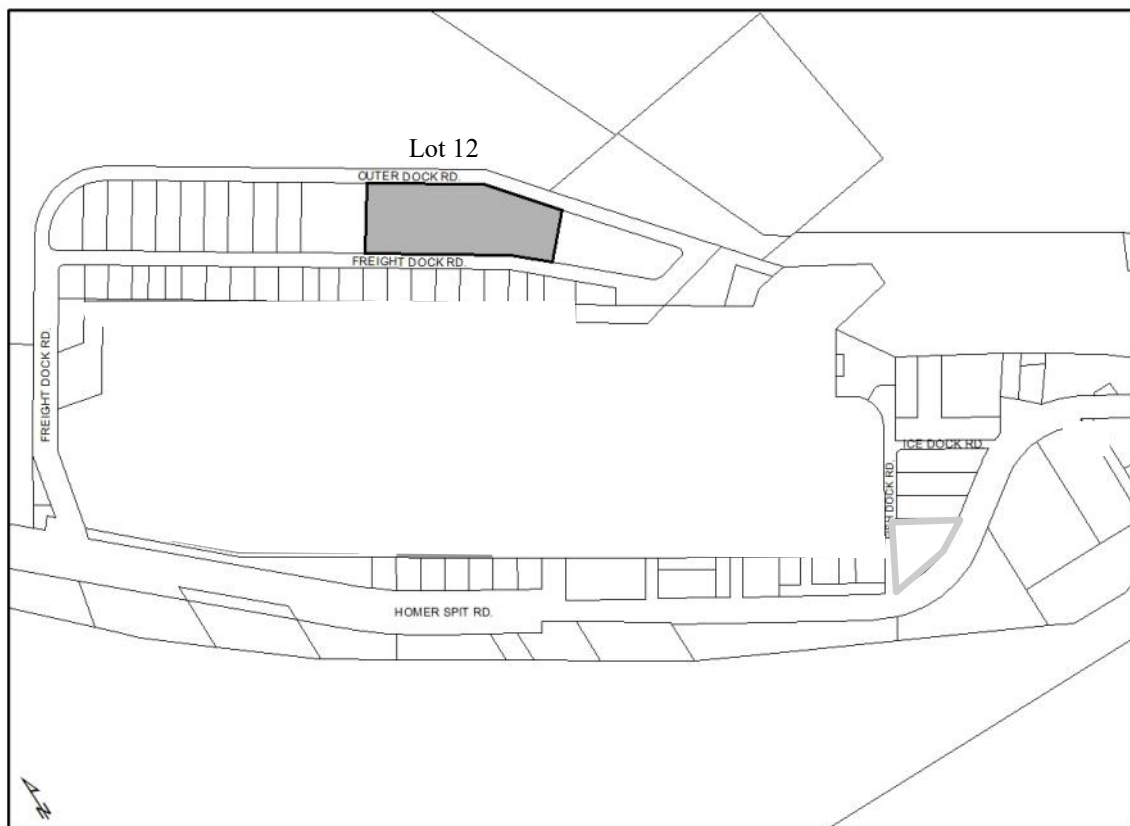


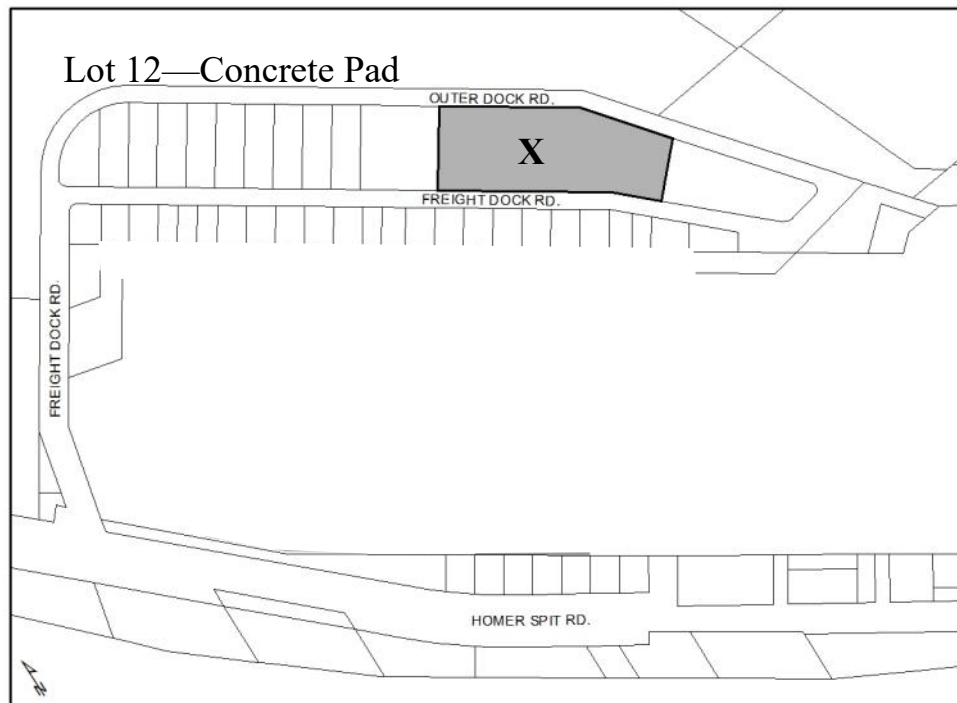
Section A

Lands available for lease

The following lots, and select areas within the Homer Airport are available for lease in 2025. Lease procedures follow the City of Homer City Code, Title 18.

The Port and Harbor Office provides information on long term leasing at the Homer Airport Terminal and on the Homer Spit. This includes short and long term leases and license agreements, such as vending machines, and bike rentals. For more information, contact 907-235-3160.





Designated Use: Lease

Acquisition History:

Area: 5 acres

Parcel Number: 18103220

Legal Description: Homer Spit Subdivision no 5 Lot 12

Zoning: Marine Industrial

Infrastructure: Water, sewer, paved road access, fenced, security lighting

Address: 4380 Homer Spit Road

Notes: 1 acre portion under lease per Resolution 23-032 to Alaska Scrap and Recycling 8 year lease with two one year options for renewal.

Prior to a long-term lease the site is appraised. The appraised lease rates for up-lands is approximately \$1.05 per square foot, per annum. Lease rates vary; contact the Port at 907-235-3160.

Homer Airport Terminal



Designated Use: Airport
Acquisition History:

Available for lease

- The Airport has ticket counter, cargo space and concession space available.
- Lease rates are approximately \$47 per square foot.

For more information, contact 907-235-3160.

Finance Dept. Code: