



# South Peninsula Hospital Report

Prepared by:  
Derotha Ferraro, Hospital Spokesperson

for

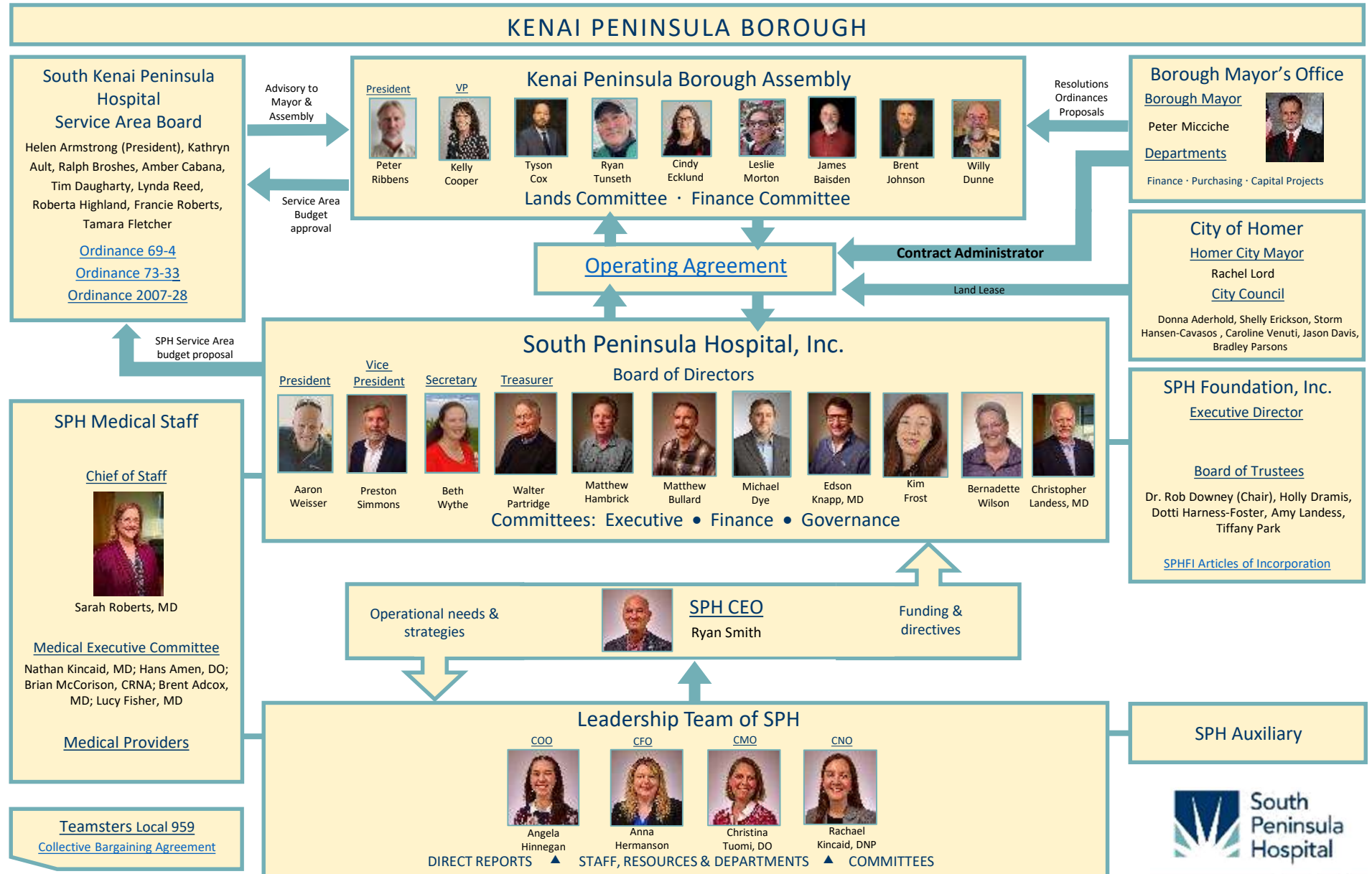
City of Homer Economic Development Commission

April 8, 2025

*Mission: Promote health and wellness through personalized, high quality, locally coordinated healthcare.*

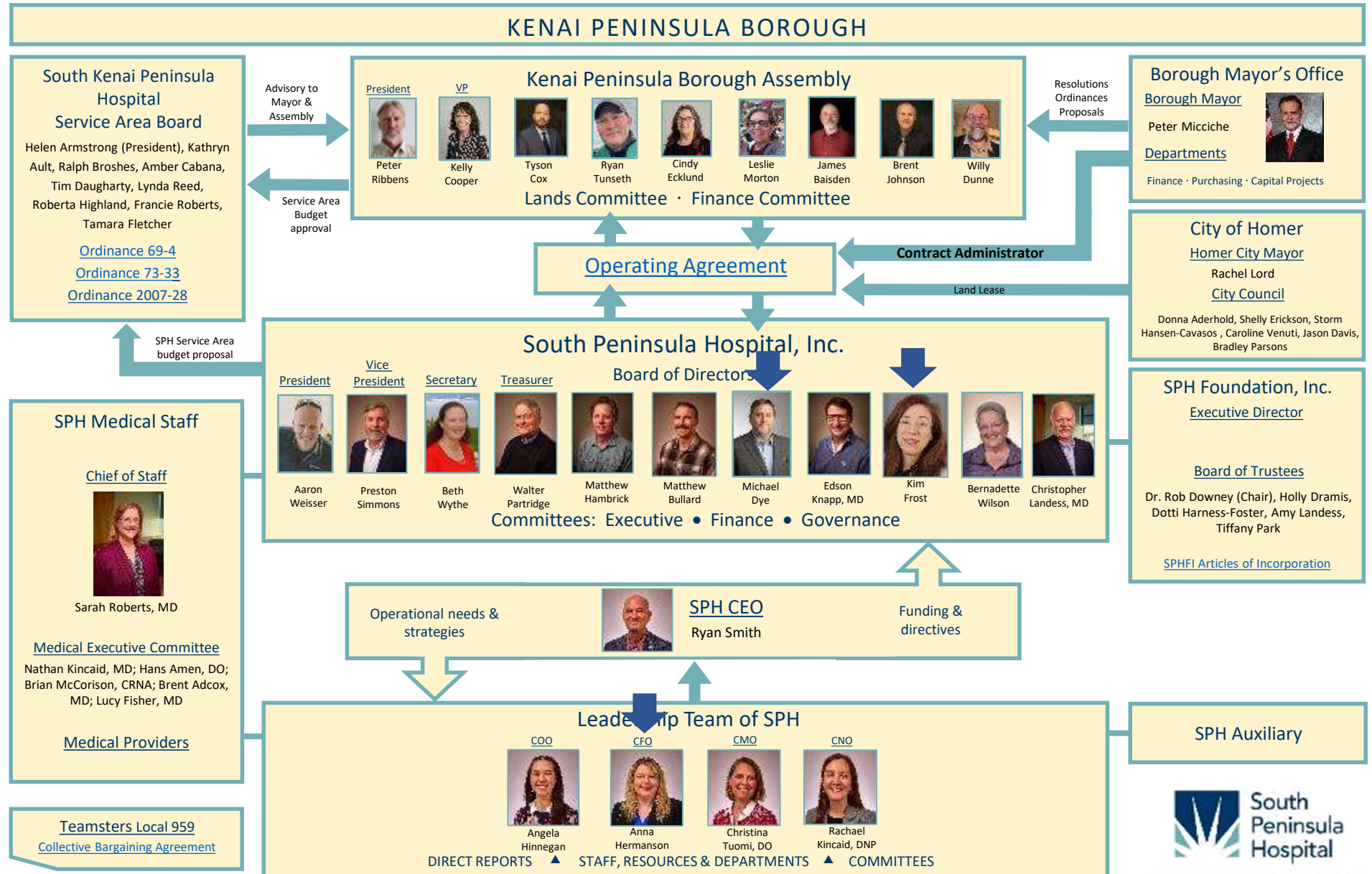


# SOUTH PENINSULA HOSPITAL OWNERSHIP AND GOVERNANCE



Questions or concerns with care? Call South Peninsula Hospital (907) 235-0389 or Alaska State Health Facilities Licensing & Certification (907) 334-2483

# SOUTH PENINSULA HOSPITAL OWNERSHIP AND GOVERNANCE



Questions or concerns with care? Call South Peninsula Hospital (907) 235-0389 or Alaska State Health Facilities Licensing & Certification (907) 334-2483



**Lars Matkin, MD – Orthopedic Surgeon**

Providing intermittent Orthopedic coverage

Medical School: Geisel School of Medicine at Dartmouth

Residency: Dell Medical School at The University of Texas at Austin



**Melissa Heiry, MD – Neurologist**

**Full time practice at SPH Neurology Clinic**

Medical School: Royal College of Surgeons, Dublin, Ireland

Residency: University of Utah;

Fellowship: University of California



**Ian Wisecarver, MD – Reconstructive Plastic Surgeon**

**Renew Plastic Surgery**

Medical School: Louisiana University

Residency: University of Texas Southwestern



**Sadie Marden, MD – OB/GYN**

**Full time practice at South Peninsula Obstetrics & Gynecology**

Medical School: Dartmouth Medical School

Residency: Maine Medical Center

**New  
Providers  
at  
SPH!**



# Coming Soon to SPH!



## **Lauren Dorsey-Spitz, DO – Pediatrics (*June 2025*)**

Joining the team at Homer Medical Center

Medical School: University of Minnesota, Minneapolis



## **Jenna Aird, M.D. – Dermatology (*July 2025*)**

Opening a new Dermatology Clinic out of the Renew Clinic on Hohe Street

Hometown: Homer, Alaska

Medical School: Creighton Medical School, Residency: Mayo Clinic College of Medicine and Science



## **Gregory Aird, M.D. – Diagnostic Radiology (*July 2025*)**

Joining Dr. Knapp as a full-time employed Radiologist

Medical School: Creighton University School of Medicine,

Residency: Mayo Clinic College of Medicine and Science



## **Hayley Walters, NP – Psychiatric Nurse Practitioner (*July 2025*)**

Joining South Peninsula OB/GYN Midwifery team – grant funded





# Relocation of Services

- Rehab – Lake Street and hospital based
- Serene Waters – flooded out
- Women's health – OB/GYN and Midwifery joining under one roof – former Rehab area
- Wound Care – moving into one of those
- Serene Waters – moving into one
- Billing Office – vacate conference room
- Dermatology – moving into vacated Ostrom office



# Economic Impact

## Charity Care

Last year: \$1.9 million

Estimated this year \$2.5 million

Eligible:

- Total balance exceeds 20% of household income
- Households up to 350% of the federal poverty rate

## Employees: # of Employees

Salaries & Wages last year \$64,634,634

- 30% on housing \$19,390,390
- 13.7 % on groceries \$ 8,854,945

TOTAL: \$28,245,335 (% based on Anchorage cost of living)

Taxable spending: Gifts, gas, visiting friends & relatives, utilities, vehicle maintenance, living supplies, recreation, children's expenses, etc.

Non-monetary – referees, school programs, sit on boards, donations, etc.

## SPH Operations – one year

- Homer Electric Association \$912,104
- Spenard Builders Supply \$376,359
- City of Homer (water) \$ 91,836
- Ulmer's Drug & Hardware \$ 51,932



*Financial*  
**Assistance Program**

South Peninsula Hospital

Financial Assistance offers a percentage discount off the remaining balance owed by eligible patients.

**Included Services**

- ✓ Homer Medical & Family Care Clinic
- ✓ Specialty Clinics & Rehabilitation
- ✓ Surgical Procedures & Emergency Care
- ✓ Radiology & Laboratory Services
- ✓ Functional Medicine & Sleep Lab
- ✓ Most medically necessary services

**What Is Covered?**

Financial Assistance covers medically necessary services and provides discounts as high as 100% off your balance.

# Housing Project Update



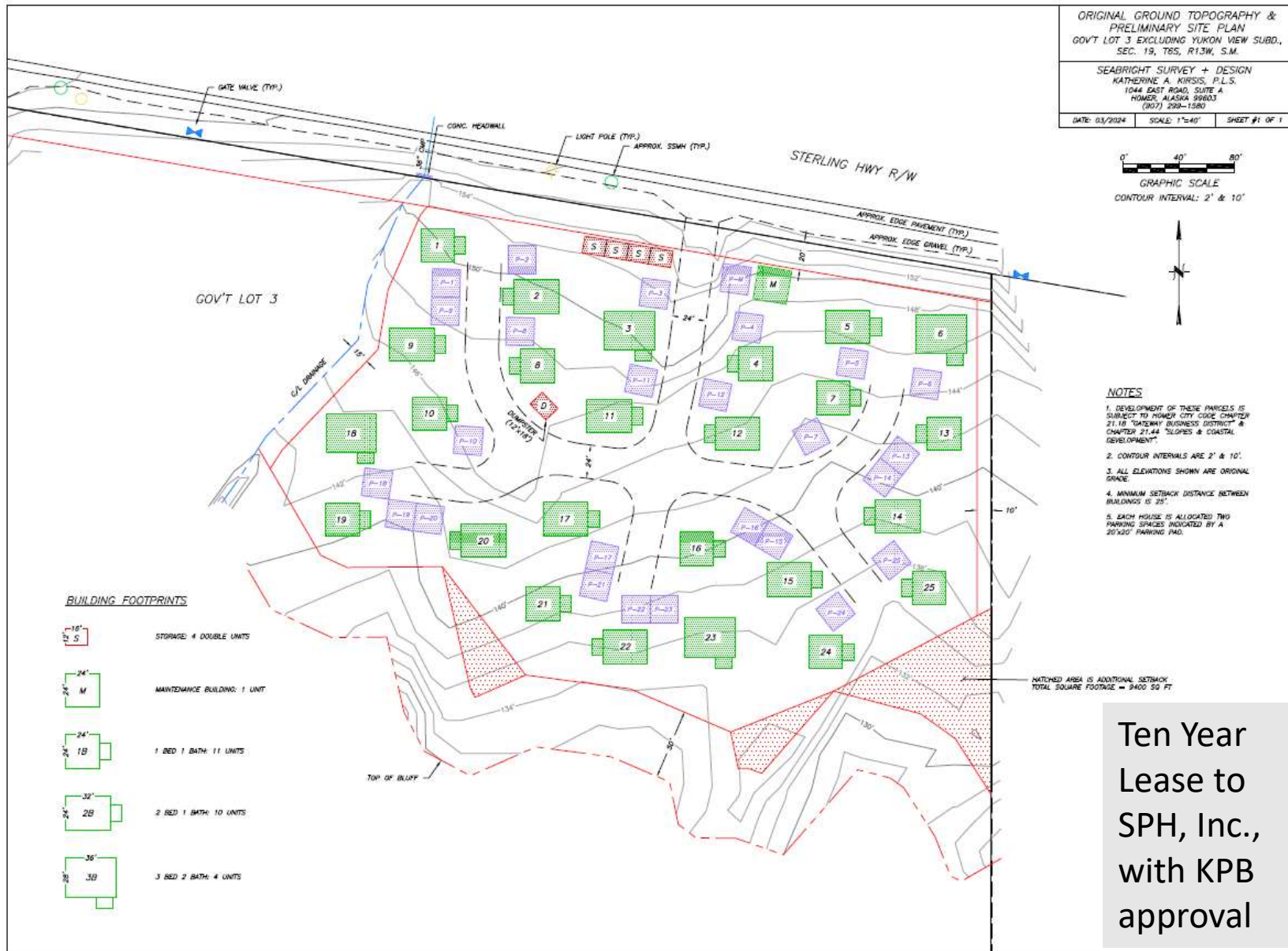
- (10) One bedroom
- (11) Two bedroom
- (4) Three bedroom

24 leases + back into  
the community





# SPH Housing Project – Site Concept



Ten Year  
Lease to  
SPH, Inc.,  
with KPB  
approval

# SPH Housing Project

## Timeline for SPH Housing Project

- April 2024 - Begin Wetlands Delineation
- April 2024 - Begin Site Design/Layout/Engineering
- May 2024 - Begin CUP Permit from City of Homer
- May 2024 - SWPPP, DAP, BMP, Water and Sewer, SWP, Driveway Permits
- August/Sept 2024 - Begin Installing Utilities, Driveways, Parking
- April 2025 - Begin Construction on 25 Rental Units
- April 1<sup>st</sup> 2026 - Phase One Completed (13 Rental Units)
- July 1<sup>st</sup> 2026 – Phase Two Completed (12 Rental Units)
- Gantt Chart will be supplied to SPH before construction begins

**Update - Hope to Break Ground in May!**



# Childcare Update



## Anticipated construction completion – July 2025

### Complete

Interior framing

Electrical and plumbing

Family Handbooks and Manuals

Classroom furniture has arrived



### Funding:

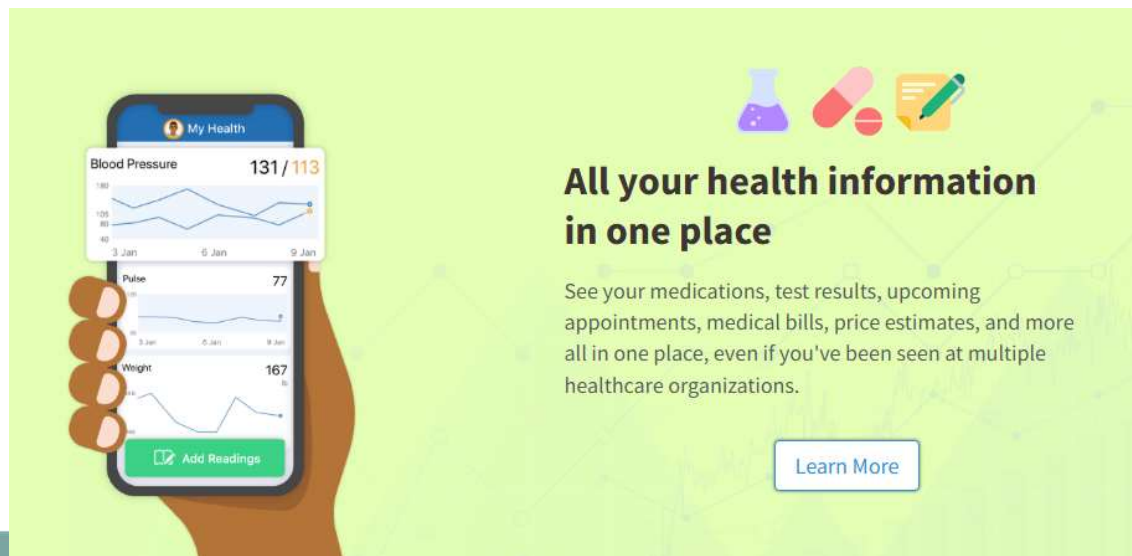
- Original 1.3 million grant from American Rescue Plan Act / Coronavirus Response & Relief
- Several smaller grants (Rasmuson)
- Hundreds in donations
- Recently invited to apply for additional funds from original source







- New Electronic Health Record
- Integrate with other Alaskan hospitals
  - Central Peninsula Hospital, Providence Alaska, AK Regional, Matsu, Prov: Kodiak, Valdez, Seward
- EPIC Go Live August 9 & 11



#### Hospitals and Health Systems:

- [Cedars-Sinai Medical Center](#)
- [Cleveland Clinic](#)
- [Johns Hopkins Hospital](#)
- [UC Davis Medical Center](#)
- [Kaiser Permanente](#)
- [Mayo Clinic](#)
- [NYU Langone Health](#)
- [University of Michigan](#)
- [Sutter Health](#)
- [Memorial Healthcare System](#)
- [Houston Methodist](#)
- [Providence Health & Services](#)
- [Geisinger Health System](#)
- [Jefferson Health](#)
- [Lehigh Valley Health Network](#)
- [Mercy Medical Center — Iowa](#)
- [Spectrum Health](#)
- [UC Davis Health](#)
- [UCHealth — Colorado](#)
- [UCLA Health](#)
- [University Health — San Antonio](#)
- [UPMC](#)
- [WVU Medicine](#)
- [Baptist Medical Center](#)
- [Boulder Community Health](#)
- [Columbus Regional Health](#)
- [Desert Valley Hospital](#)
- [Suburban Community Hospital](#)
- [University Hospitals](#)
- [Adventist Health](#)
- [Avera Health](#)
- [Beebe Healthcare](#)
- [CGH Medical Center](#)
- [Children's Mercy Kansas City](#)
- [CarolinaEast Health System](#)
- [CommonSpirit's South region](#)
- [Great River Health](#)
- [IU Health](#)
- [Saint Peter's Healthcare System](#)
- [Gritman Medical Center](#)

## Follow up to projects in failed bond proposition

- Building purchases – no action from SPH; remain leasing;
- Nuclear Medicine / Infusion Clinic expansion / Pharmacy relocate
  - Nuclear Medicine – no action;
  - Infusion Clinic/Pharm still moving forward – regulatory; 65% designed; searching for funding
- New and relocated generator/power plant
  - \$5 million Congressional discretionary allocation via DHSS/HRSA
  - Taking solicitations through July
  - Construction: late 2025 – early 2027







## What's Next?

- Outreach
- Community survey
  - Starts end of week thru 24<sup>th</sup>
- Board of Directors strategic planning retreat



## How major cuts to Medicaid could be 'catastrophic,' even for Alaskans with private insurance

Alaska Public Media | By Rachel Cassandra, Liz Ruskin  
Published March 11, 2025 at 11:05 AM AKDT

▶ LISTEN • 5:51

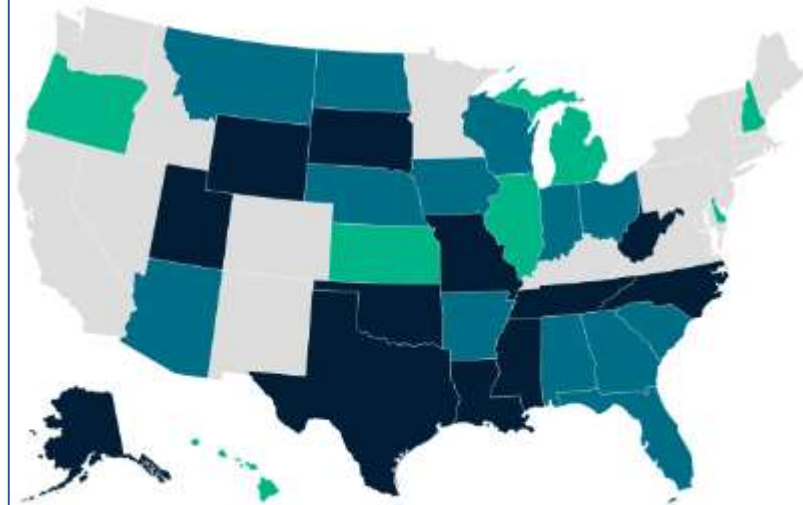


Alaskans protest potential federal and state funding cuts March 4, 2025 in Anchorage.

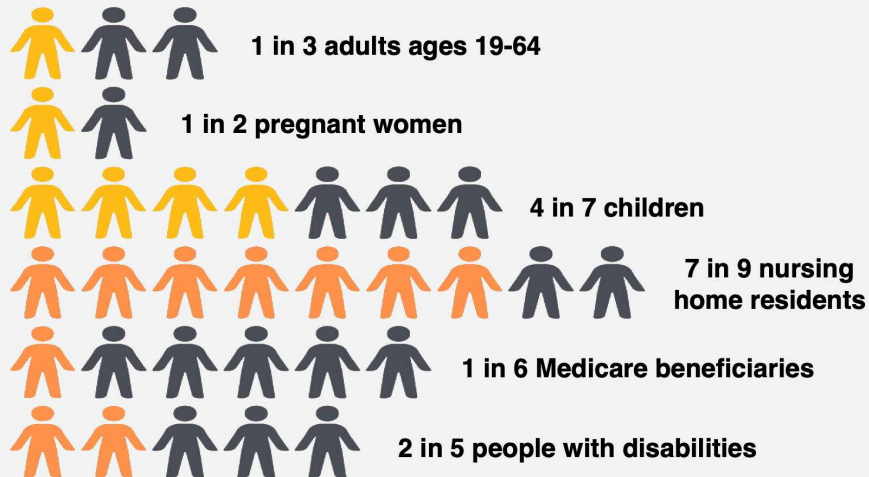
## Among States Using HealthCare.gov, on Average, Premium Payments Would At Least Double in 12 States If Enhanced Subsidies Expire

Percent Change in Premium Payments Without Inflation Reduction Act Subsidies Among HealthCare.gov Consumers Receiving APTC, 2024

Percent Change Dollar Change  
 ■ Less than 80% ■ 80% - 99% ■ 100% or more



## Medicaid coverage in Alaska



# AHA Rural Health Care Leadership Conference

## Stats about the 1800 Rural Hospitals

- Percentage of Rural Hospitals in the Red increased from 43% to 50% from 2023 - 2024.
- In the RED: 55% of independent Rural Hospitals; 42% of Rural Hospitals affiliated with Health Systems.
- National median operating margin for rural hospitals is 1.0%!
- Within 16 states, median operating margin is negative.
- Almost 60% of Rural Hospitals are affiliated with Health Systems.
- 293 Rural Hospitals dropped OB services between 2011 and 2023
- 424 Rural Hospitals stopped providing chemotherapy services between 2014 –23.
- Over 700 are at risk of closure - 360 at immediate risk, within 2-3 years  
(Center for Healthcare Quality and Payment Reform)
- WHY? Private insurance plans (including Medicare Advantage) pay them less than the cost to provide patient care. Even though most at risk Rural Hospitals lose money on Medicaid and Uninsured patients, losses on private insurance patients are the biggest cause of overall losses.
- CAH – Critical Access Hospital status from CMS – improves reimbursement

Thank you

QUESTIONS?



*South Peninsula Hospital Mission: Promote health and wellness through personalized, high quality, locally coordinated healthcare.*







**Kenai Peninsula  
Borough**

 **Owned**

 **Leased**