



Dear City Manager,

Attached is a request for revocable easement for the purposes of emergency egress from the Land's End conference room. This easement request is made necessary by unprecedented erosion in the limited area on the north facing beach where our prior exit stair system existed for 21 years.

Since this proposed easement will exist upon the terms and at the pleasure of the City of Homer, we are providing a detailed draft for Council action with the hope and expectation that upon their approval, we will refine the documents to your satisfaction.

Sincerely,

A handwritten signature in black ink, appearing to read "Jon Faulkner", written in a cursive style.

Jon Faulkner

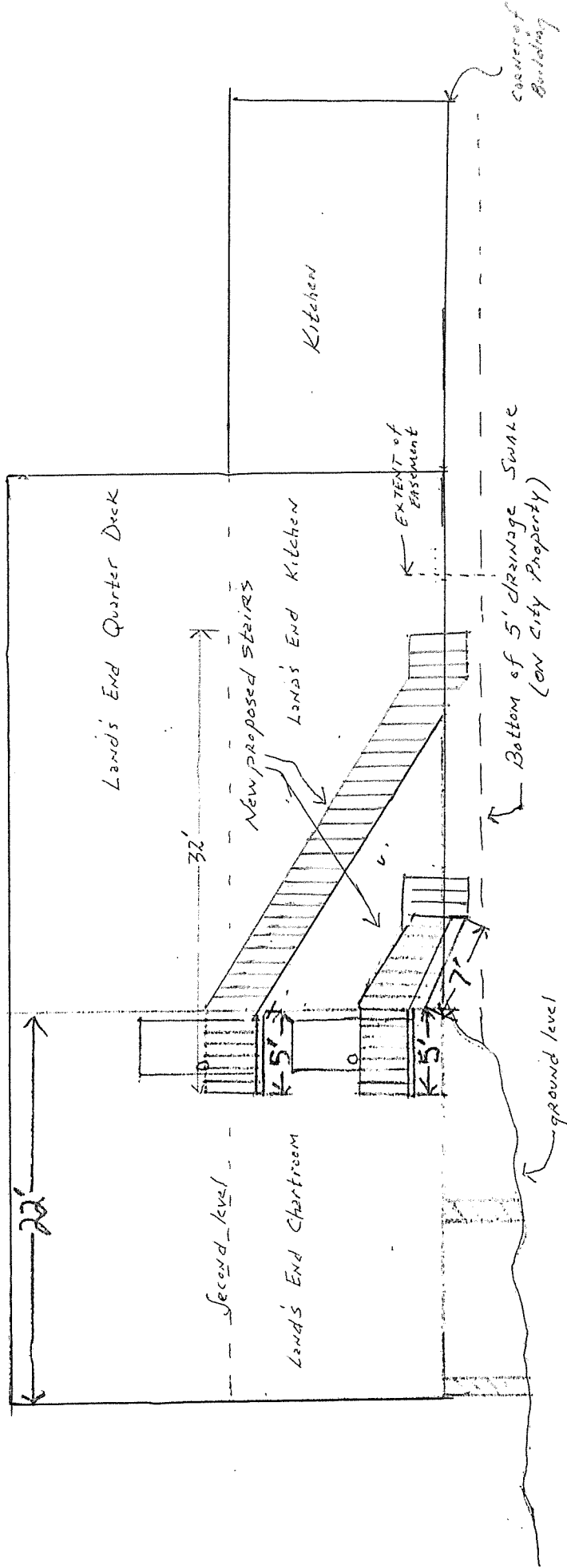
Land's End Resort - President

Exhibit A

North Elevation
Lands End Resort

SCALE:

$\frac{1}{8}'' = 1'$



5 ft x 35 ft limited private egress easement

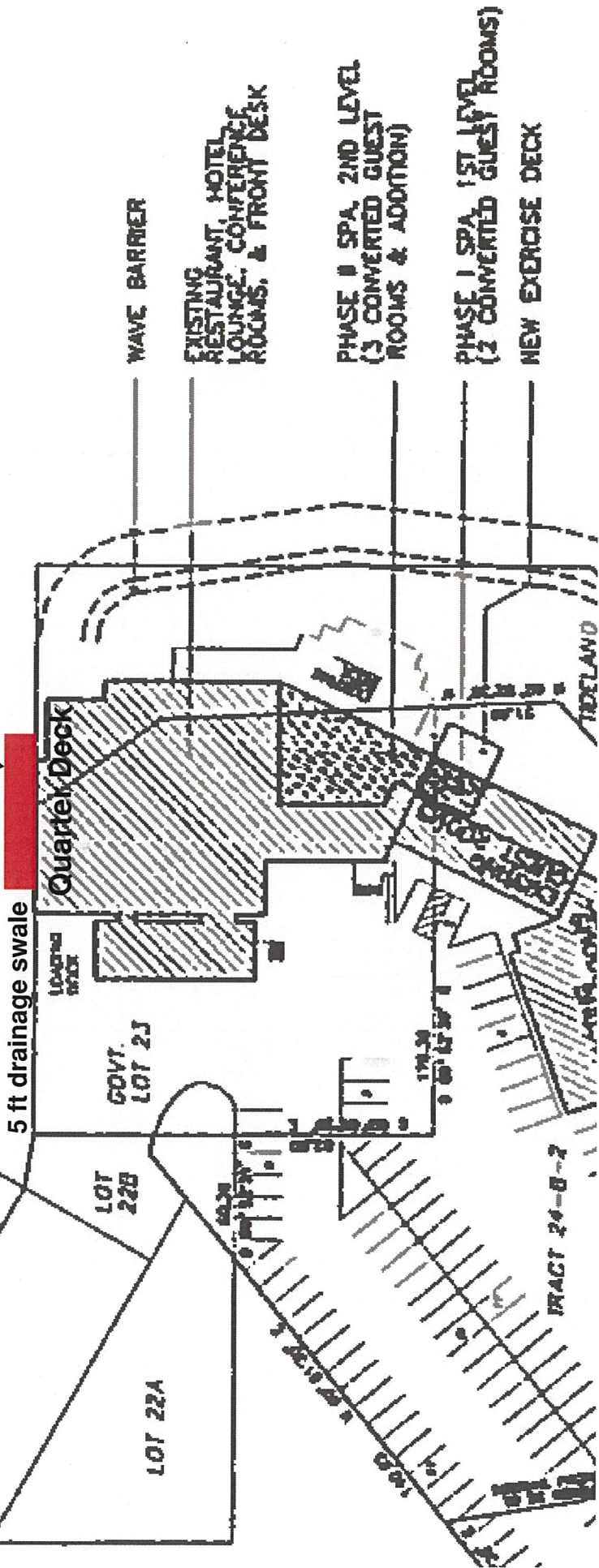
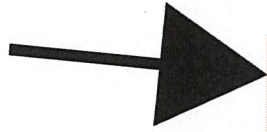


Chart room exterior wall

Drainage
swale

Photo taken from shoreline looking westerly.
Trucks parked in the End of the Road park.

Exhibit C

