

EXHIBIT A

HOMER AIRPORT TERMINAL

AIR CARRIER/TICKET/BAGGAGE AND CARGO SUBLEASE

This Exhibit A replaces the previous Exhibit A that was included in the lease dated January 29, 2014 between the City of Homer, Sublessor, and Era Alaska, dba RAVN Alaska, Sublessee. As of Nov. 1, 2017 the lease premises are described as:

The office areas #108 and #109 and the ticketing area #107 directly in front of Office area #108 and #109, and the baggage make-up area (enplaning) which is directly behind office areas #108 and #109. This area is approximately 28 feet by 52 feet, or 1,456 square feet.

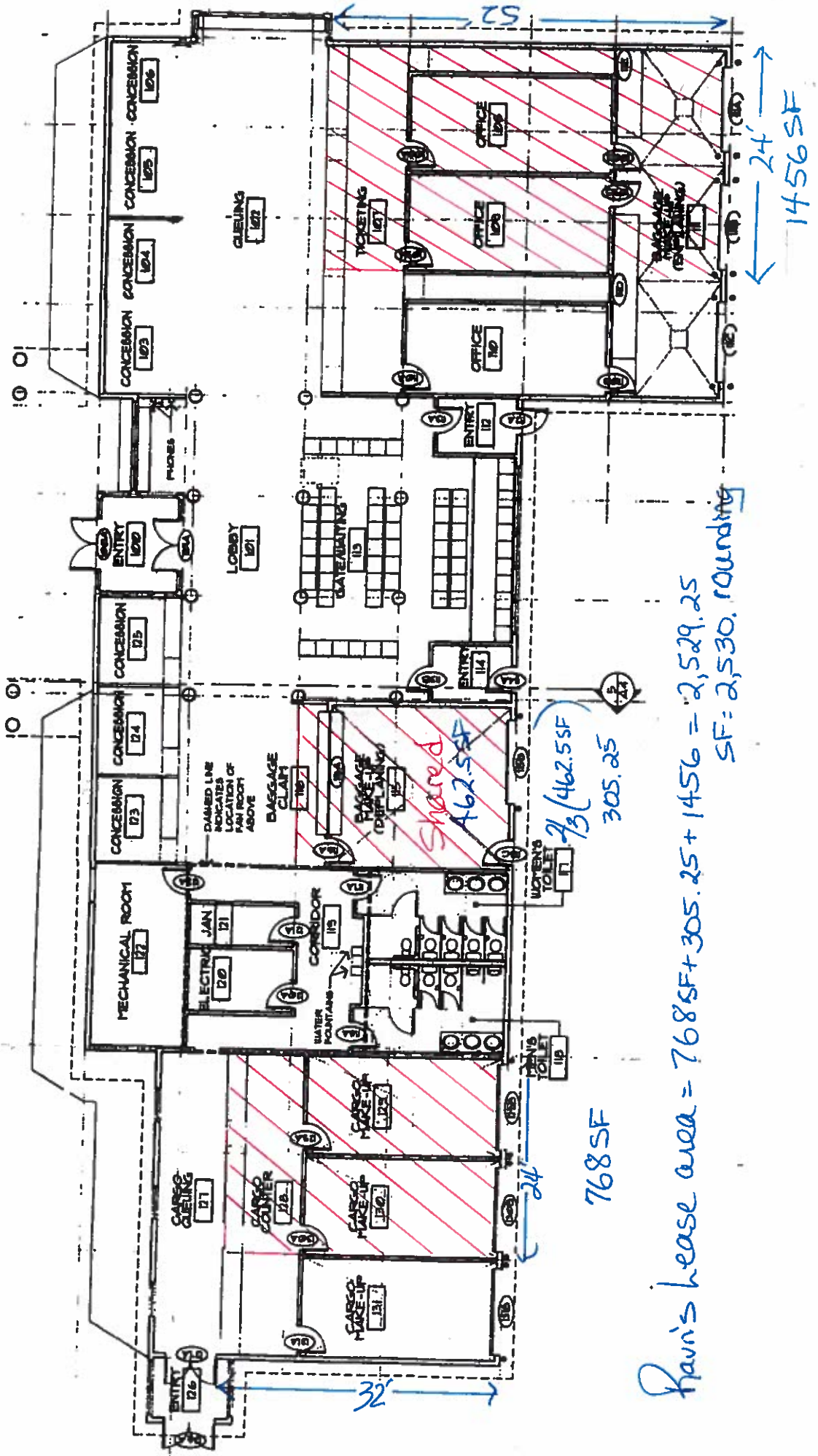
Two-thirds of the shared baggage make-up (deplaning) area #115 area. This area is approximately 24.5 feet by 18.5 feet and two-thirds (RAVN's portion) of the baggage area is approximately 300 square feet.

The Cargo make-up area #129 and #130 and the cargo counter directly in front of cargo area #129 and #130. This area is approximately 32 feet by 24 feet, or 768 square feet.

Total area consists of 2,523 square feet.

<b>Dimensions</b>	<b>Square feet</b>	<b>Description</b>
<b>28 'x 52'</b>	1456.00	Office 108 & 109, baggage enplaning area behind office 108 & 109, Ticketing 107 in front of office 108 & 109.
<b>0.66(18.5' x 24.5')</b>	299.15	Two-thirds of the baggage make-up (deplaning)
<b>32' x 24 '</b>	768.00	Cargo make-up area 129 & 130 and the cargo counters in front of Cargo make-up 129 & 130
<b>Total</b>	2523.15	New lease area square footage
<b>Noted in lease</b>	2523.00	New lease area square footage rounding down

City of Homer  
Airport Terminal Floor Plan



Ravi's lease area =  $768\text{ SF} + 305.25 + 1456 = 2,529.25$   
 $\text{SF} = 2,530. \text{ rounding}$