

1 **CITY OF HOMER**
2 **HOMER, ALASKA**

3 City Manager
4 Public Works Director

5 **RESOLUTION 23-103**
6

7 A RESOLUTION OF THE CITY COUNCIL OF HOMER, ALASKA
8 APPROVING A SOLE SOURCE CONTRACT WITH FRITZ CREEK
9 WELDING IN THE AMOUNT OF UP TO \$18,000 TO FABRICATE
10 CUSTOM METAL PARTS FOR THE BELUGA SLOUGH GREEN
11 INFRASTRUCTURE PROJECT, AND AUTHORIZING THE CITY
12 MANAGER TO NEGOTIATE AND EXECUTE THE APPROPRIATE
13 DOCUMENTS.
14

15 WHEREAS, Ordinance 23-16(S) appropriated funds to design and construct the Beluga
16 Slough Green Infrastructure Project; and
17

18 WHEREAS, The goal is to develop a storm water treatment installation that filters out
19 particulates, dissolved metals and other contaminants that storm water carries, before the
20 water is discharged into the Slough; and
21

22 WHEREAS, Field and design work has been on-going all summer to test the density,
23 porosity and chemical constituency of the existing soils to ascertain their suitability for a
24 nature-based storm water treatment facility; and
25

26 WHEREAS, There are a variety of commercial storm water treatment devices that claim
27 to treat storm water, which are all expensive and difficult to ship from the lower 48 and have
28 marginal efficacy, leading us to develop a system constructed of custom parts fabricated
29 locally; and
30

31 WHEREAS, This system consists of a large concrete vault with some metal baffles, sort
32 of like a big septic tank, which collect sediment that falls out of the water flow; and
33

34 WHEREAS, The City will be able to procure the component parts for this system from
35 local vendors; and
36

37 WHEREAS, Fritz Creek Welding is the local vendor that is able to fabricate the metal
38 components, including a stainless steel trash rack and aluminum "lamella plate assembly
39 inserts", both customized to fit the concrete vault, as well as some brackets, poured in place
40 in the concrete vault, to hold these components in place; and
41

42 WHEREAS, Homer City Code allows exceptions to be made to bidding requirements in
43 the cases where a sole source procurements is justified, HCC 3.16.060(i) and a sole source
44 procurement is justified in this case because Fritz Creek Welding;

- 45 1. Is uniquely qualified to fabricate the intricate metal components needed for this
46 project;
47 2. Is available to do the work in a timely manner, which is easier said than done this time
48 of year; and
49 3. Is interested in helping us achieve a successful outcome by being willing and able to
50 collaborate with the design/fabrication team consisting of other local vendors.
51

52 WHEREAS, Fritz Creek Welding's cost to perform the work is deem fair and reasonable,
53 compared to our analysis of similar work.
54

55 NOW THEREFORE BE IT RESOLVED that the Homer City Council hereby authorizes
56 reimbursement in the amount of up to \$18,000 to Fritz Creek Welding to fabricate custom
57 metal parts for the Beluga Slough Green Infrastructure Project.
58

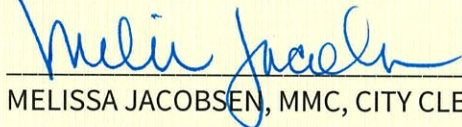
59 PASSED AND ADOPTED by the Homer City Council this 9th of October, 2023.
60

61 CITY OF HOMER

62 

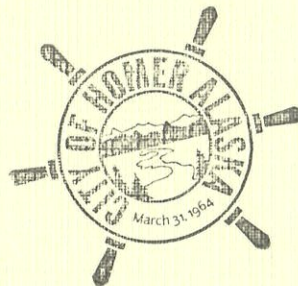
63 _____
64 KEN CASTNER, MAYOR
65

66 ATTEST:

67 
68 _____

69 MELISSA JACOBSEN, MMC, CITY CLERK
70

71 Fiscal note: Project Budget \$260,489 (Ord 23-16(S)) / Amount remaining \$232,811





MEMORANDUM

Resolution 23-103, A Resolution of the City Council of Homer, Alaska Approving a Sole Source Contract with Fritz Creek Welding in the amount of up to \$18,000 to Fabricate Custom Metal Parts for the Beluga Slough Green Infrastructure Project, and Authorizing the City Manager to Negotiate and Execute the Appropriate Documents. City Manager/Public Works Director.

Item Type: Backup Memorandum
Prepared For: City Council
Date: September 27, 2023
From: Janette Keiser, PE, Public Works Director/City Engineer
Through: Rob Dumouchel, City Manager

I. Issue: The purpose of this Memorandum is to request approval to issue a sole source contract to Fritz Creek Welding to fabricate custom metal parts for the Beluga Slough Green Infrastructure Project.

II. Background:

Ordinance 23-16(S) appropriated the following funds to design and construct the Beluga Slough Green Infrastructure Project:

Alaska Clean Water Actions (ACWA) Grant	\$153,307
City of Homer Matching Funds – HART Road Fund	\$ 81,313
City of Homer Matching Funds – In-kind services	<u>\$ 25,869</u>
Total	\$260,489

The goal is to develop a storm water treatment installation that filters out particulates, dissolved metals and other contaminants that storm water carries, before the water is discharged into the Slough. Field and design work has been on-going all summer to test the density, porosity and chemical constituency of the existing soils to ascertain their suitability for a nature-based storm water treatment facility. Sadly, much of the soils have been dried out over time, due to the City's construction of a gravel berm that extends into the Beluga Slough wetland. This means this site will not have the potential we had hoped for to serve its purpose so we are looking at a supplemental site, which you will hear more about later. Meanwhile, we are doing what we can with the Beluga Slough site.

There are a variety of commercial storm water treatment devices that claim to treat storm water. They are all expensive and difficult to ship from the lower 48 and have marginal efficacy. Instead of using such an off-the-shelf device, we have developed a system

constructed of custom parts fabricated locally. This not only keep the business local, it gives us a more cost effective system that provides more efficient treatment. This system consists of a large concrete vault with some stainless steel baffles, sort of like a big septic tank. The concrete tank will collect sediment that falls out of the water flow. Metal baffles will help this process. We are procuring the component parts for this system from local vendors.

The local vendor that will fabricate the metal components is Fritz Creek Welding. The components will include a stainless steel trash rack and aluminum “lamella plate assembly inserts”, both customized to fit the concrete vault. There will also be various brackets, poured in place in the concrete vault, to hold these components in place.

Homer City Code allows exceptions to be made to bidding requirements in the cases where a sole source procurements is justified, HCC 3.16.060(i). A sole source procurement is justified in this case because Fritz Creek Welding:

- a. Is uniquely qualified to fabricate the intricate metal components needed for this project;
- b. Is available to do the work in a timely manner, which is easier said than done this time of year; and
- c. Is interested in helping us achieve a successful outcome by being willing and able to collaborate with the design/fabrication team consisting of other local vendors.

Fritz Creek Welding’s cost to perform the work is deem fair and reasonable, compared to our analysis of similar work.

- III. RECOMMENDATIONS:** That the City Council approves a sole source contract to Fritz Creek Welding in the amount of up to \$18,000 to fabricate custom metal parts for the Beluga Slough Green Infrastructure Project.

Bunnell Stormwater Treatment System: Hansen Avenue Proposal



Bunnell Outflow Flume

Shown in a maximum of flood stage at 4 cubic feet per second, 9:24 PM on 8/15/23

CGS CORP. GEOPHYSICAL SERVICES

CLIENT
 City of Homer
 Homer Public Works Dept
 3575 Heath St
 Homer, AK 99603

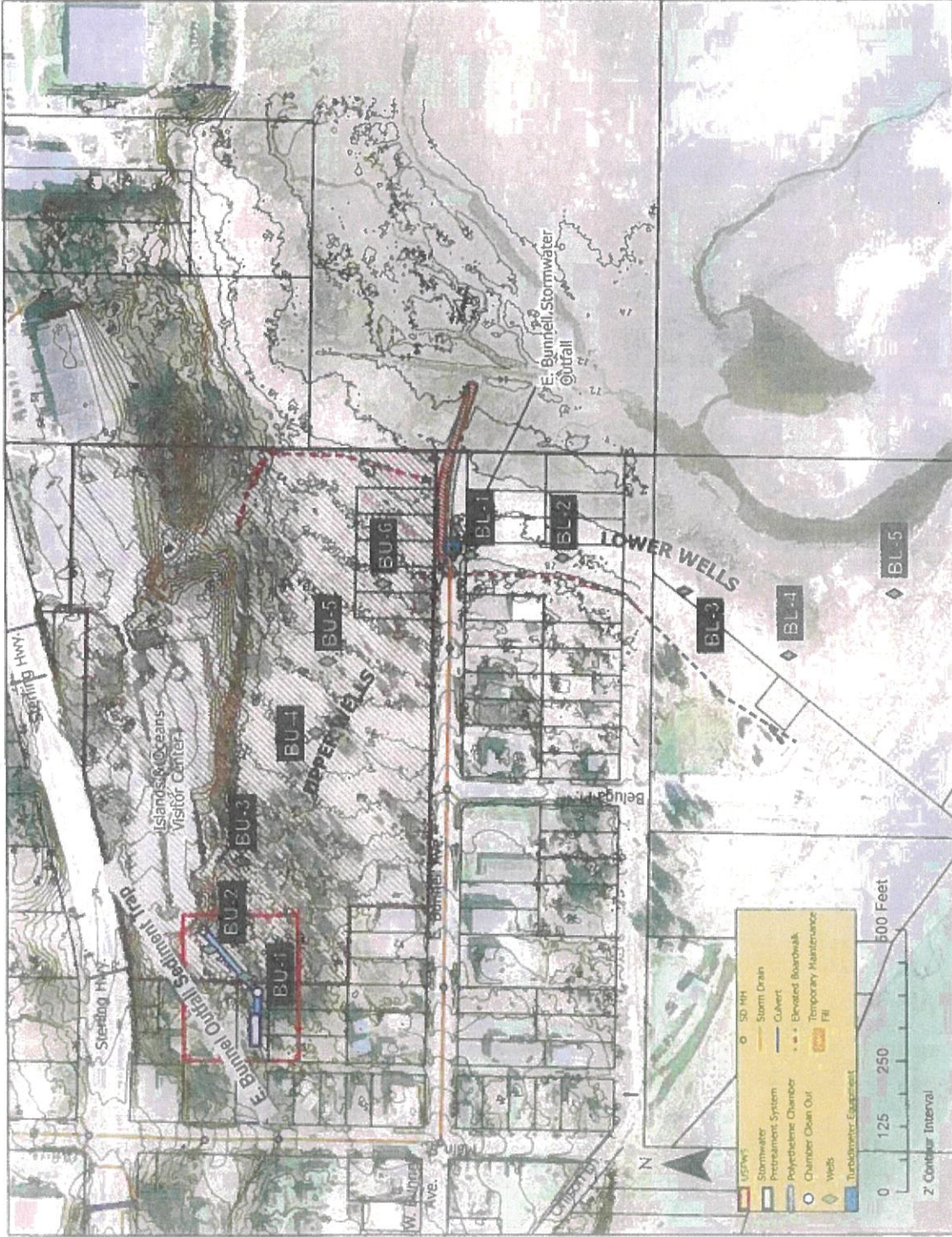
PROJECT
 E. Bunnell Outfall
 Stormwater Treatment
 System

DRAWN BY


DESCRIPTION
 Watershed and Discharge
 Measurement at East Bunnell
 Outfall

FIGURE


Bunnell Stormwater Treatment System: Hansen Avenue Proposal

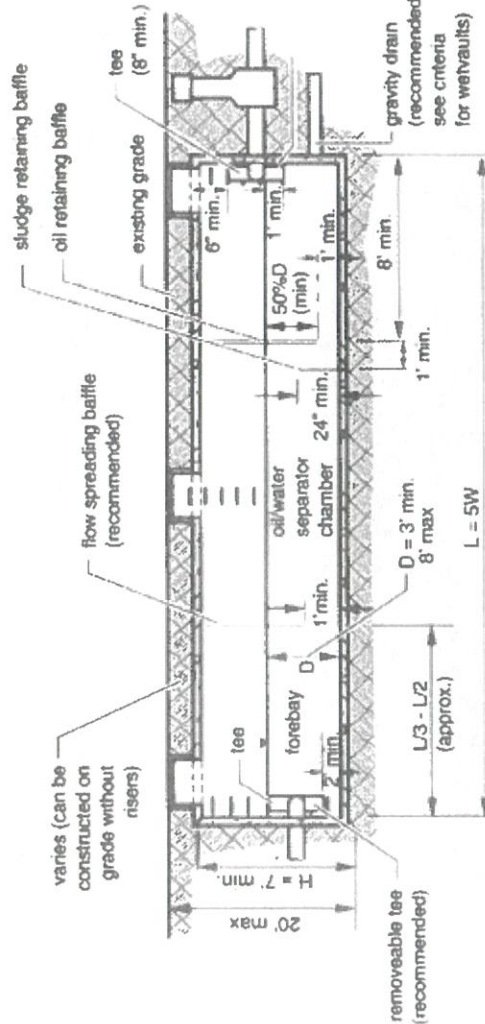
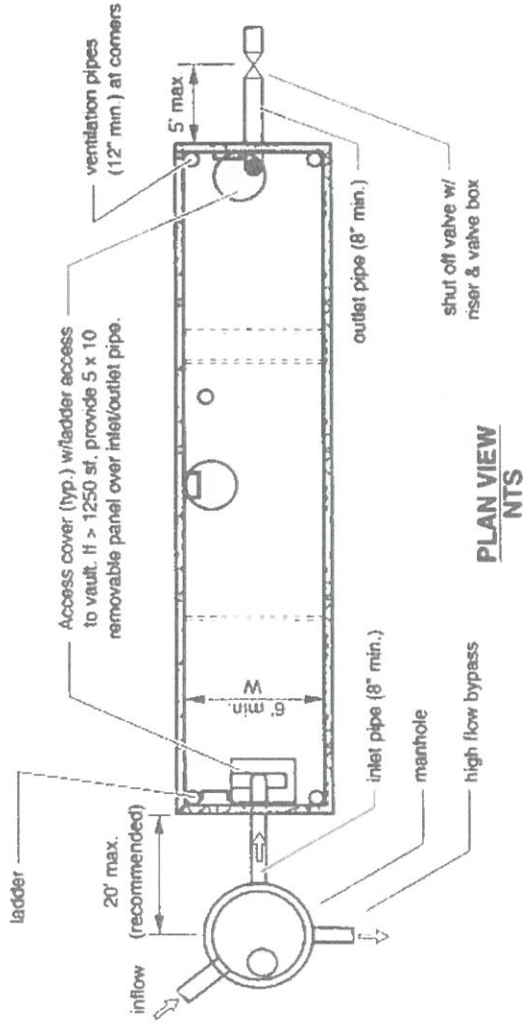


CLIENT	PROJECT	DRAWN BY	DESCRIPTION
City of Homer Homer Public Works Dept 3575 Heath St Homer, AK 99603	E. Bunnell Outfall Stormwater Treatment System	Aaron Yeaton COH Public Works	Well Locations Investigating Wetlands for Stormwater Treatment



FIGURE B

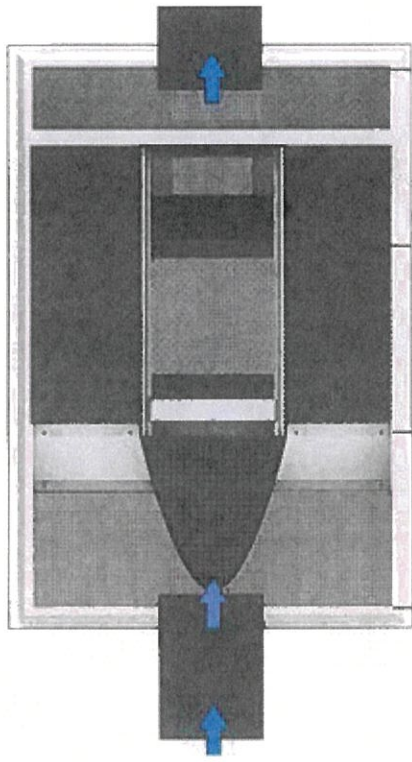
Typical API-Type (Baffle) Grit Chamber



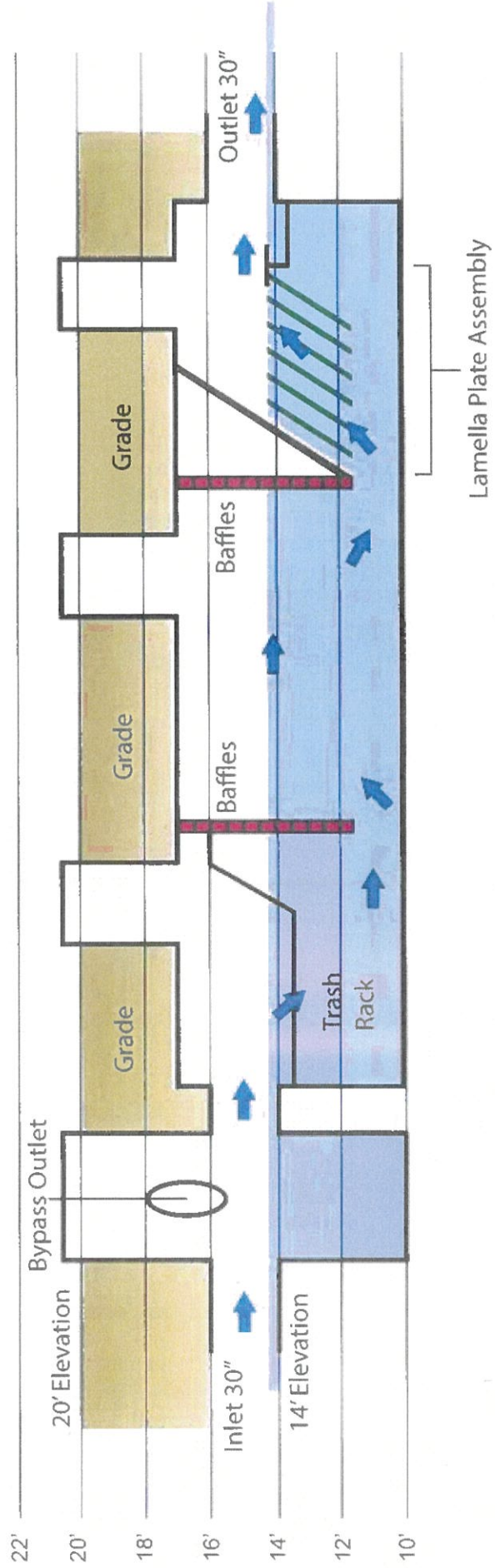
SECTION VIEW
NTS

CLIENT	PROJECT	DRAWN BY	DESCRIPTION
City of Homer Homer Public Works Dept 3575 Heath St Homer, AK 99603	E. Bunnell Outfall Stormwater Treatment System	CGS	Detail: Typical Baffle Sediment and Oil Trap
			Typical API-Type (Baffle) Grit Chamber Source: Washington Dept of Ecology, 2000

Option A: Locally Fabricated Lamella Plate Sediment and Oil Trap Customized to Our Location



Trash Rack



CLIENT	PROJECT	DRAWN BY	DESCRIPTION
City of Homer Homer Public Works Dept 3575 Heath St Homer, AK 99603	E. Bunnell Outfall Stormwater Treatment System	CGS	Option A: Locally Fabricated Lamella Plate Sediment and Oil Trap Customized to Our Location

FIGURE

