

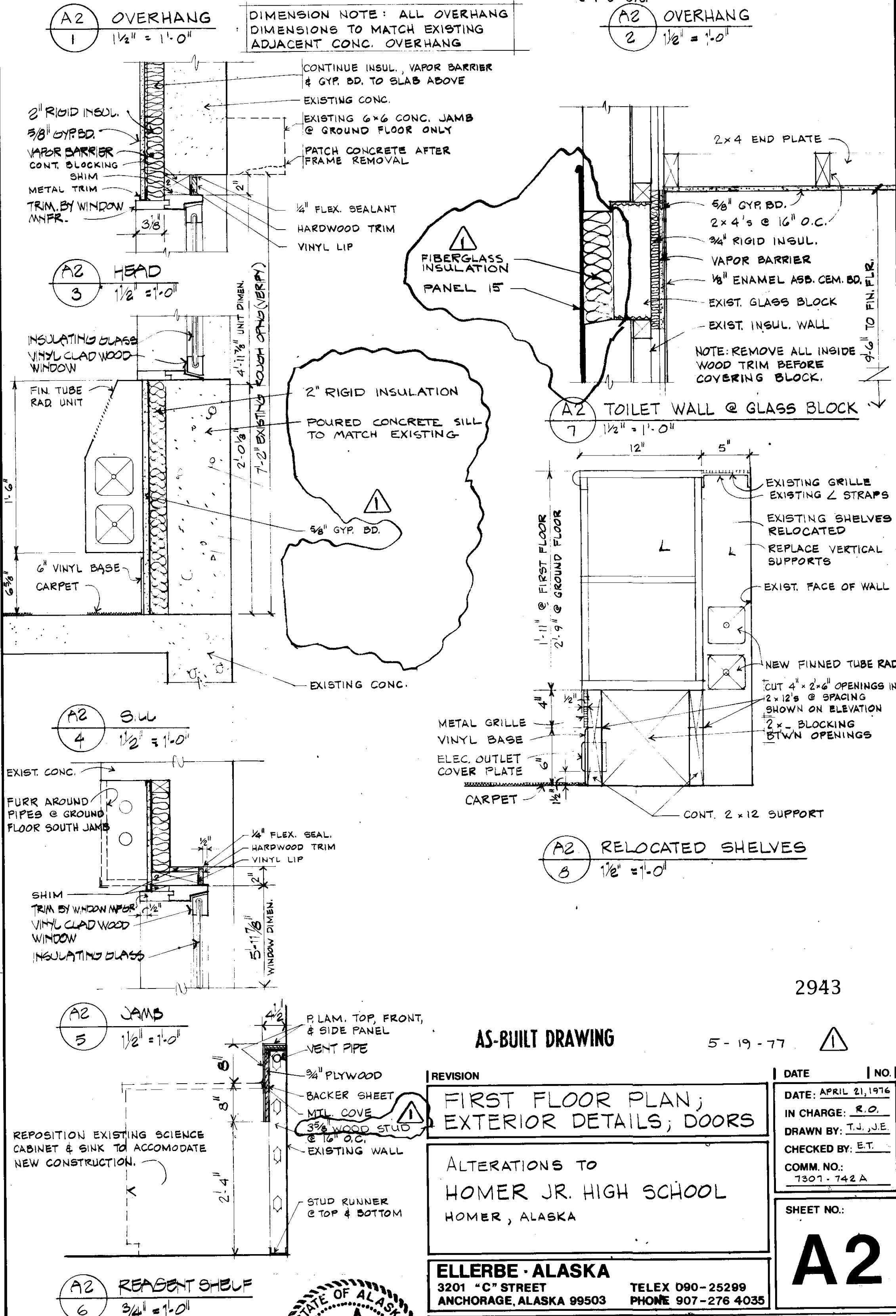
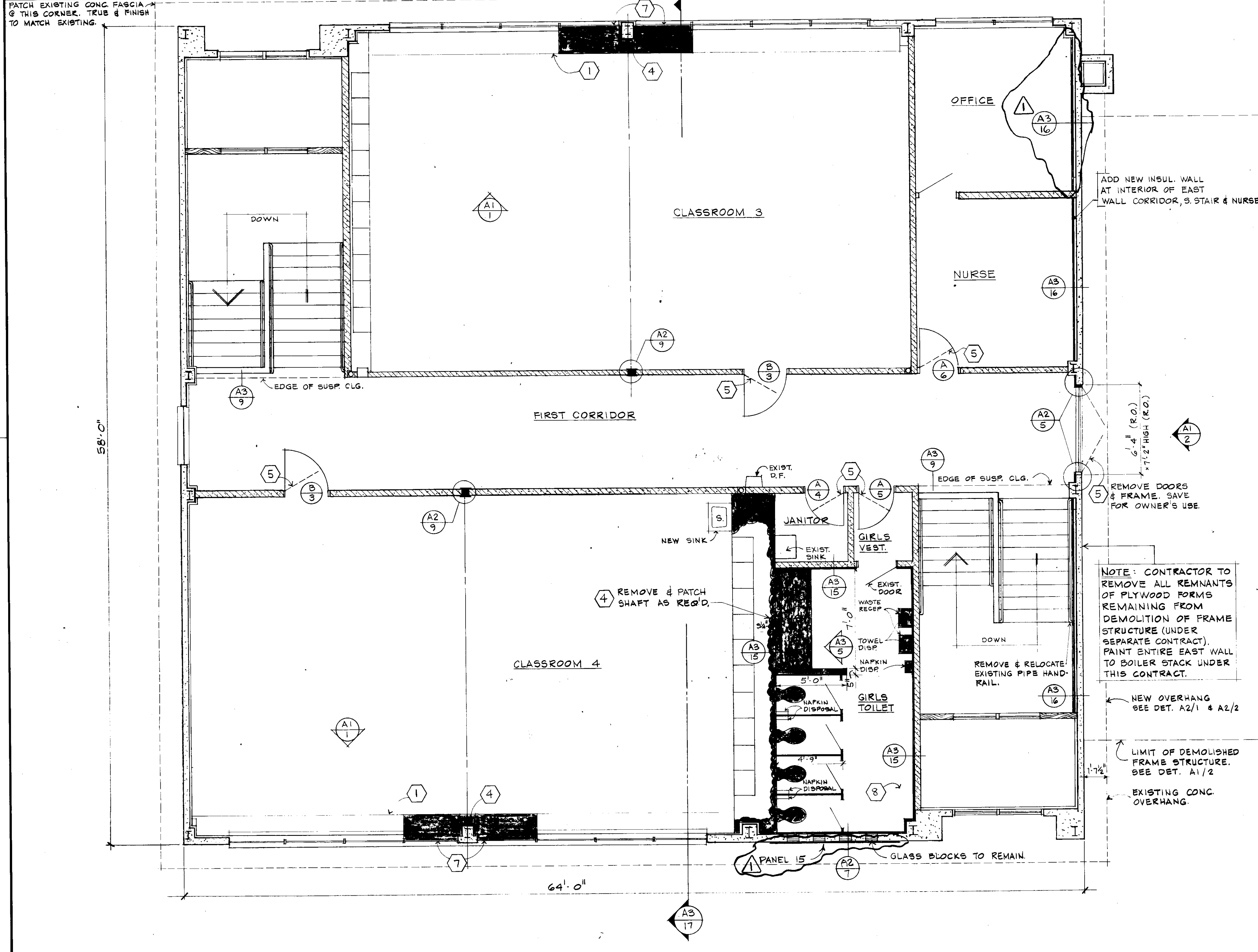
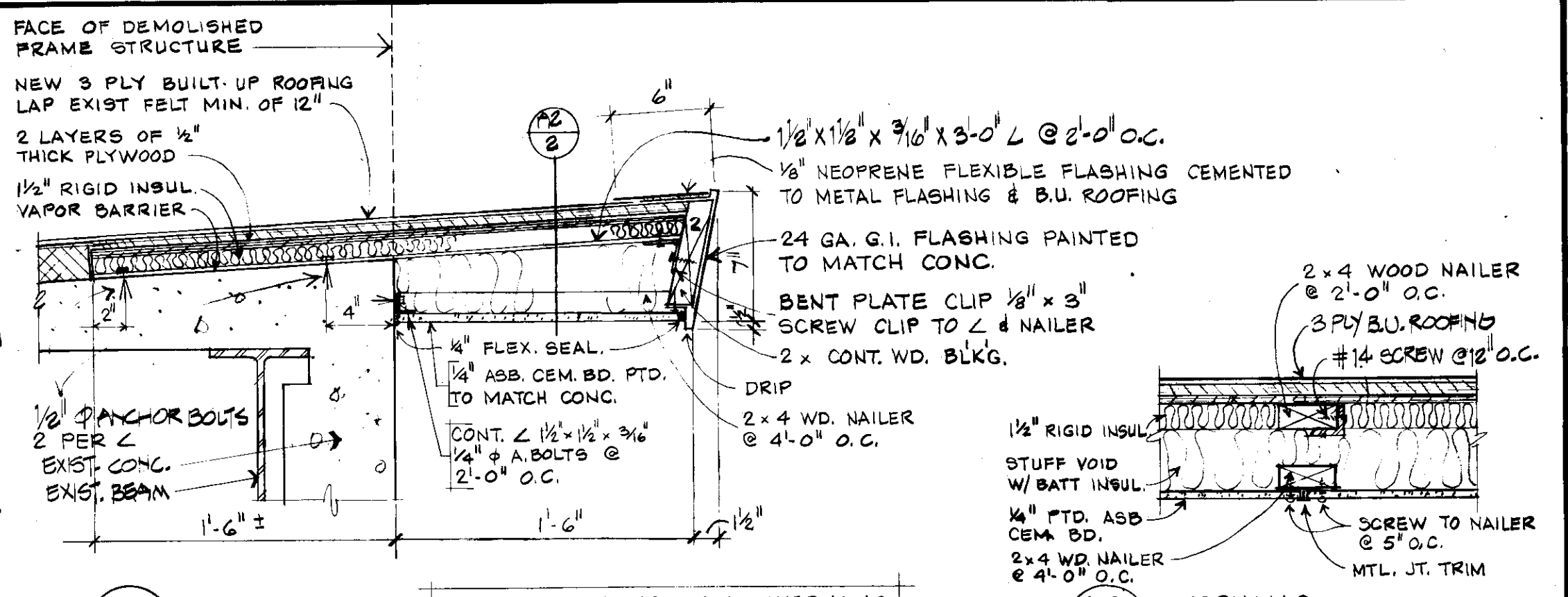
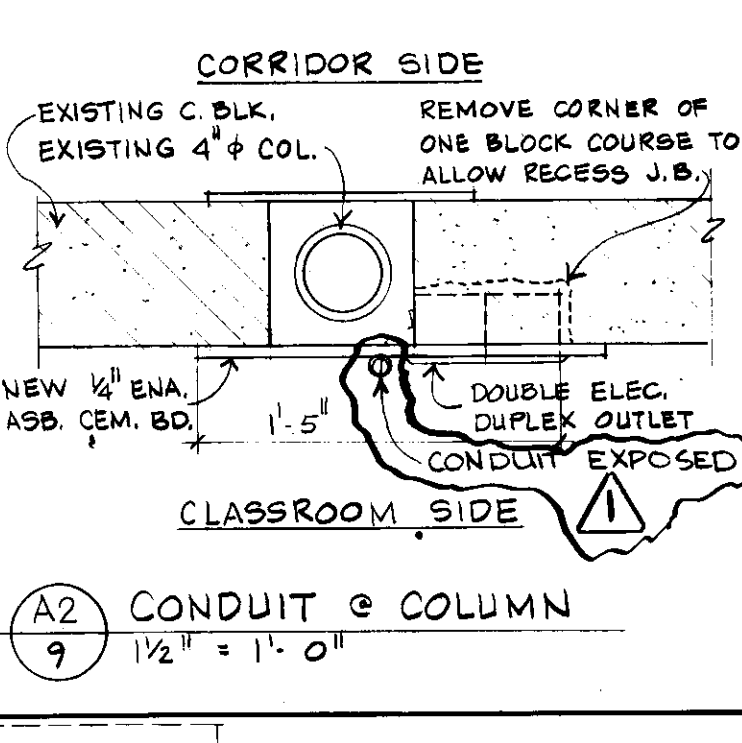
DOOR LEGEND & NOTES:

(B) DOOR TYPE AT LEFT
(2) HARDWARE GROUP AT RIGHT

- ALL FRAMES TO REMAIN. REPAINT TO MATCH WALLS.
- CONTRACTOR SHALL VERIFY EXISTING DOOR SIZES BEFORE ORDERING NEW DOORS.
- LABEL DOORS SHALL HAVE LABEL AS REQUIRED.

HARDWARE GROUPS (SEE SPECIFICATIONS FOR ABBREVIATIONS)

HW-1	BUTTS - 2 EACH PUSH BARS - 2 EACH PULL PLATE - 2 EACH DOOR CLOSER - 2 EACH KICK PLATE - 2 EACH FLOOR STOP & HOLDER - 2 EACH	MC T4A3786 CI 24455 VO 8800T RU P2810 CI 5024 GJ F40	HW-4	BUTTS - 1 EACH LOCKSET - 1 EACH DOOR CLOSER - 1 EACH KICK PLATE - 1 EACH WALL BUMPER - 1 EACH	MC TA2714 SC D51PD RU P2810 CI 5024 GJ W850
HW-2	BUTTS - 1 EACH LOCKSET - 1 EACH DOOR CLOSER - 1 EACH KICK PLATE - 1 EACH WALL BUMPER - 1 EACH	MC TA2714 SC D51PD RU P2810 CI 5024 GJ W850	HW-5	BUTTS - 1 EACH LOCKSET - 1 EACH DOOR CLOSER - 1 EACH KICK PLATE - 1 EACH WALL BUMPER - 1 EACH	MC TA2714 SC D70PD RU 2810 CI 5024 GJ W850
HW-3	BUTTS - 1 EACH LOCKSET - 1 EACH DOOR CLOSER - 1 EACH KICK PLATE - 1 EACH WALL BUMPER - 1 EACH	MC TA2714 SC D70PD RU P2810 CI 5024 GJ W850	HW-6	BUTTS - 1 EACH LOCKSET - 1 EACH DOOR CLOSER - 1 EACH KICK PLATE - 1 EACH WALL BUMPER - 1 EACH	MC TA2714 SC D51PD RU 2810 CI 5024 GJ W850



FIRST FLOOR PLAN
SCALE: 1/4" = 1'-0"

(SHADED) = NEW CONSTRUCTION OR ITEM

2943

AS-BUILT DRAWING 5-19-77

REVISION	DATE	NO.
1. FIRST FLOOR PLAN; EXTERIOR DETAILS; DOORS	APRIL 21, 1976	
2. ALTERATIONS TO HOMER JR. HIGH SCHOOL HOMER, ALASKA		

IN CHARGE: R.O.
DRAWN BY: J.D., J.E.
CHECKED BY: E.T.
COMM. NO.: 7301-742 A
SHEET NO.: **A2**

ELLERBE - ALASKA
3201 "C" STREET ANCHORAGE, ALASKA 99503
TELEX 090-25299 PHONE 907-276-4035

