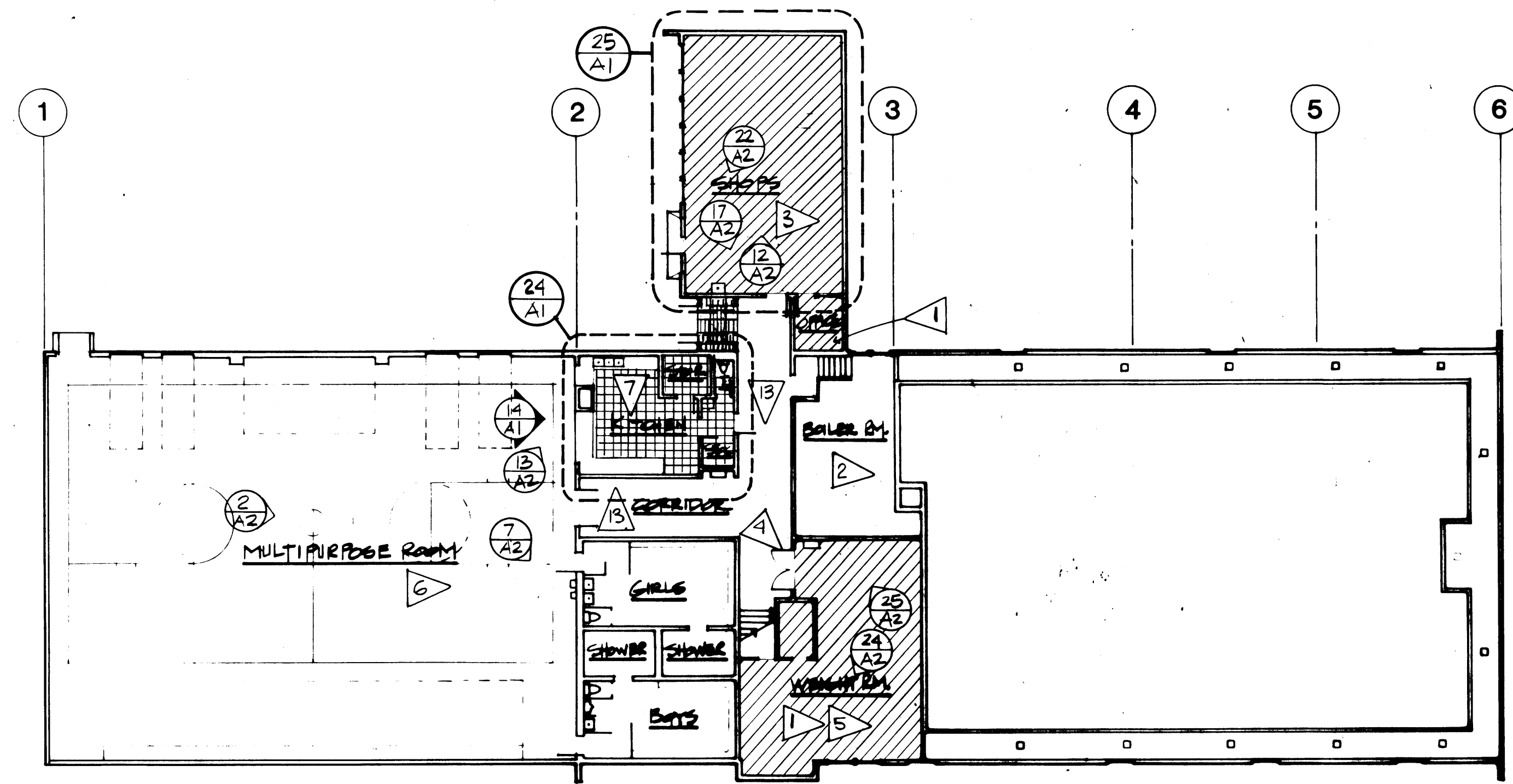


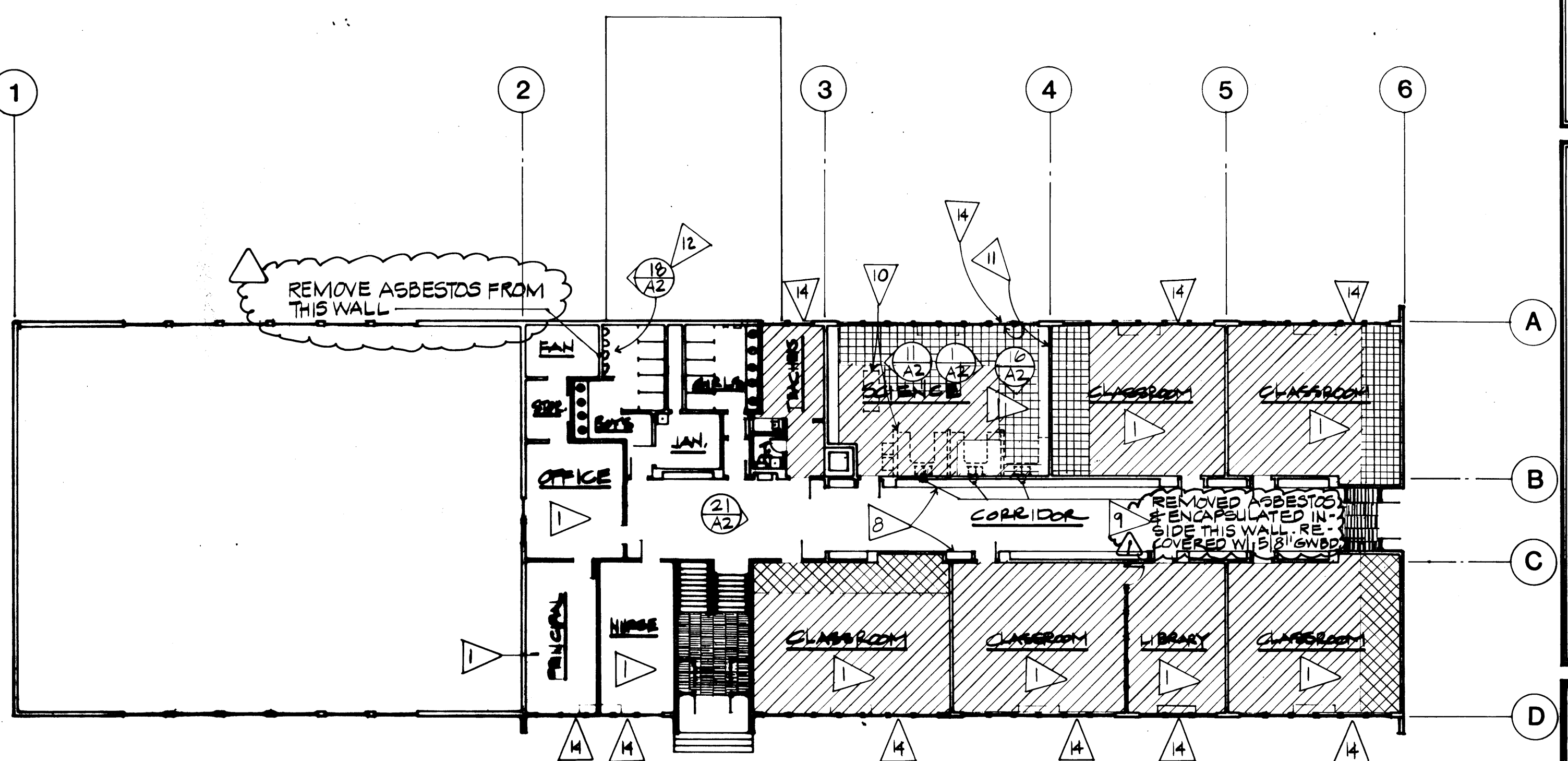
McGLOTHLIN BALIVET CO.
ARCHITECTS & PLANNERS
6000 C STREET, S.W.
ANCHORAGE, ALASKA 99507

MODIFICATIONS TO
HOMER LOWER SCHOOL
AND MIDDLE SCHOOL
Kenai Peninsula Borough School District

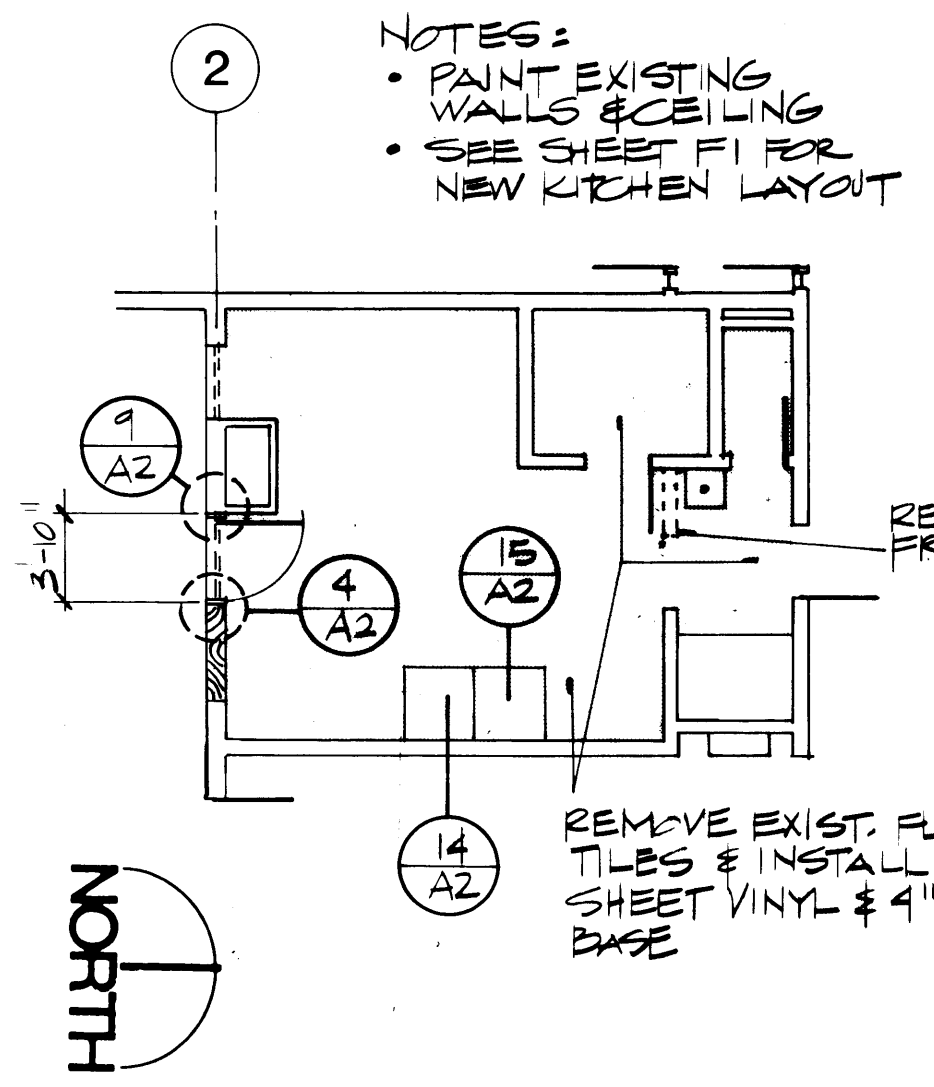
FLOOR PLANS
2927
Drawn By M.B.
Checked By L.M.
Project No 410
Date 5-3-85
Sheet No
A1



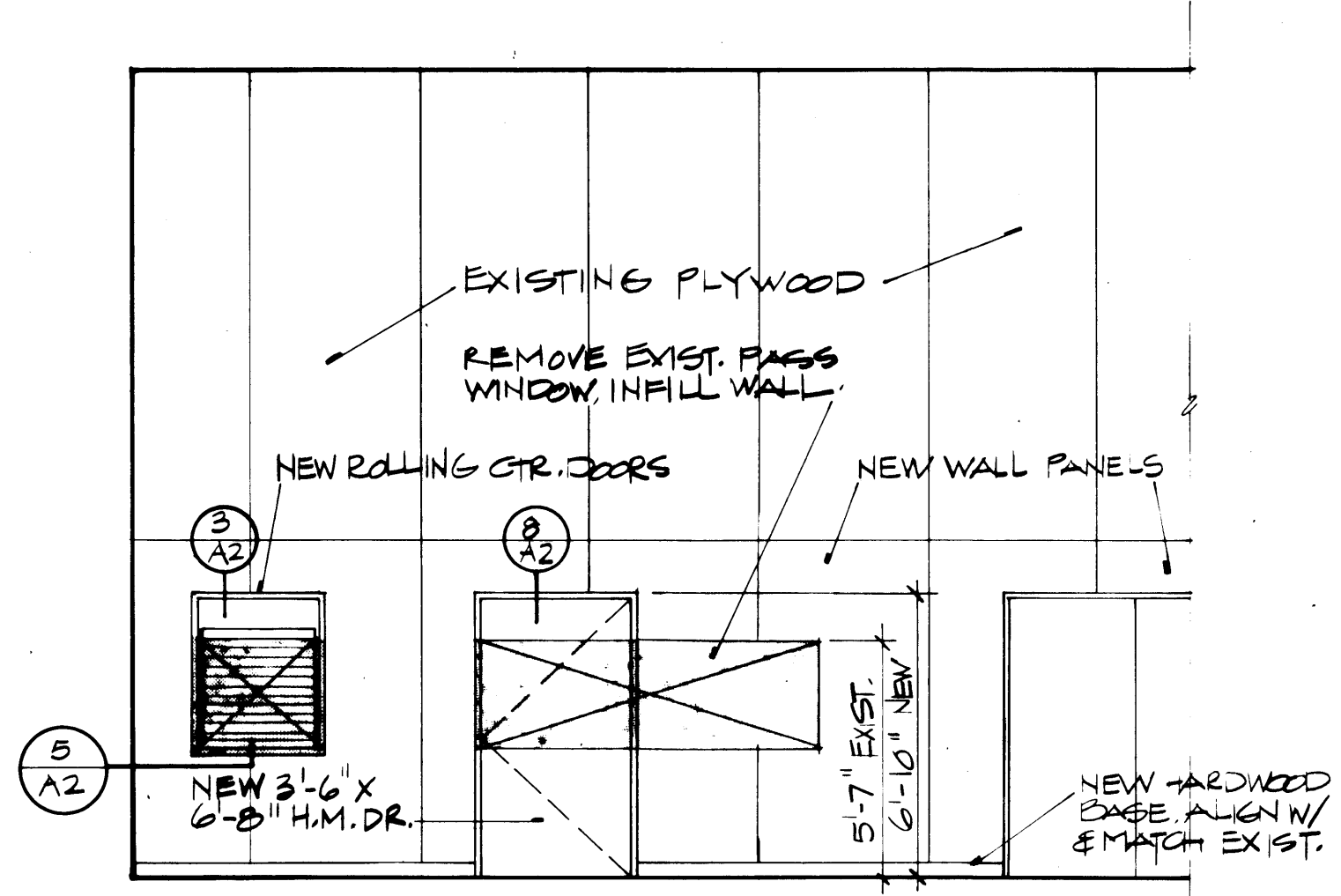
EXISTING HOMER MIDDLE SCHOOL - GROUND FLOOR PLAN 12
1/16" = 1'-0"



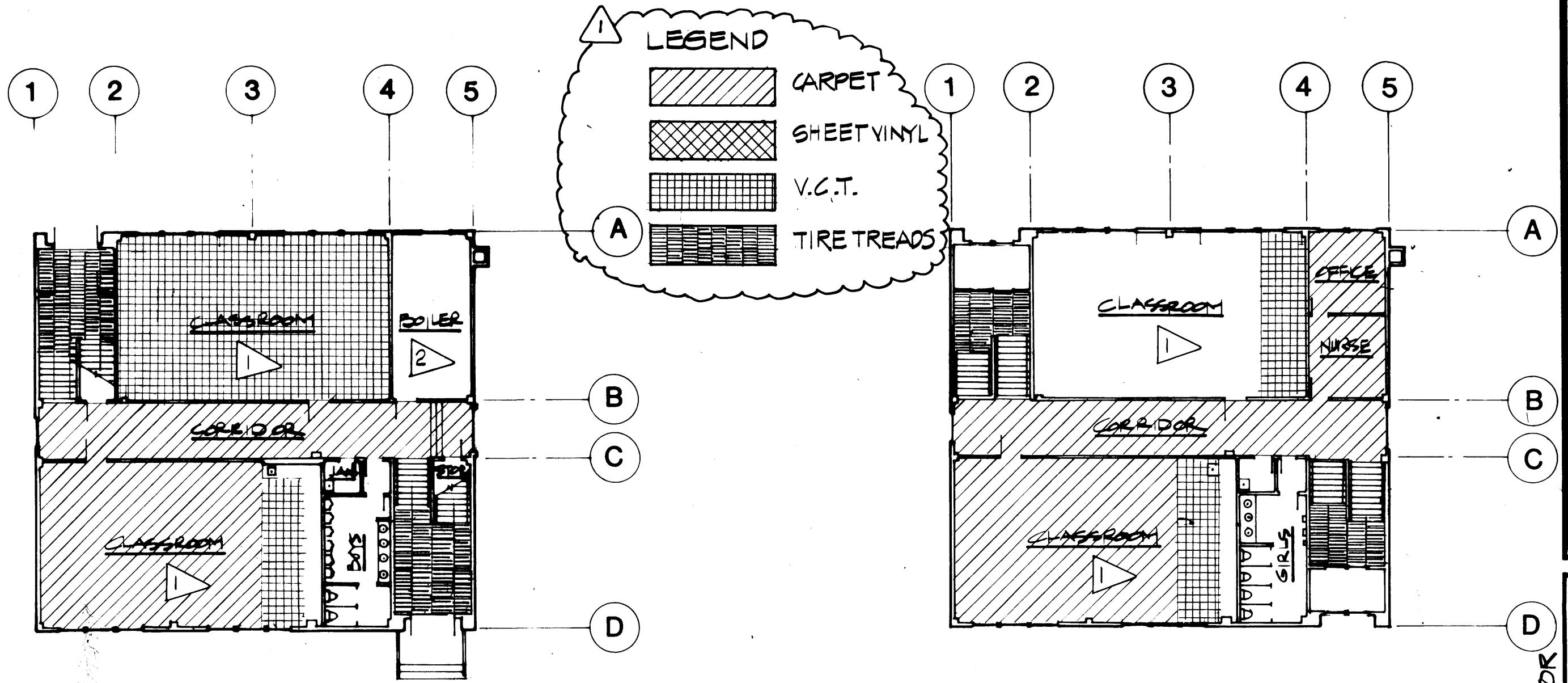
HOMER MIDDLE SCHOOL - FIRST FLOOR PLAN 2
1/16" = 1'-0"



KITCHEN PLAN 24
1/8" = 1'-0"

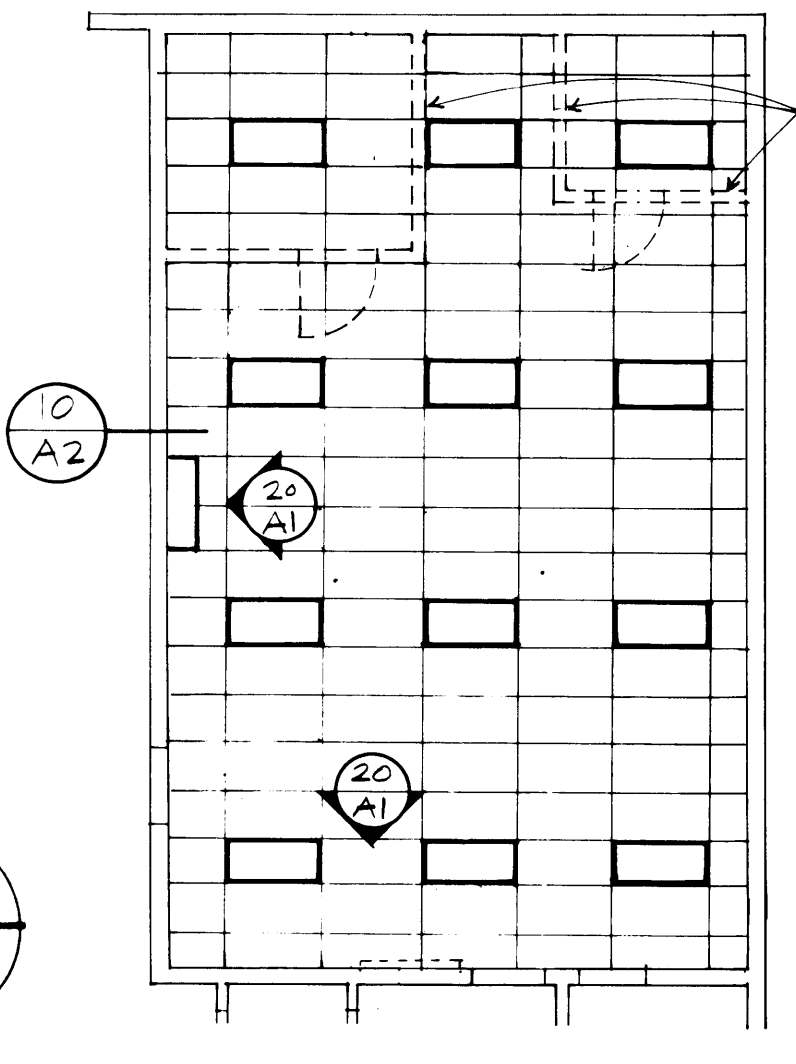


NW. ELEVATION MULTIPURPOSE ROOM 14
1/4" = 1'-0"

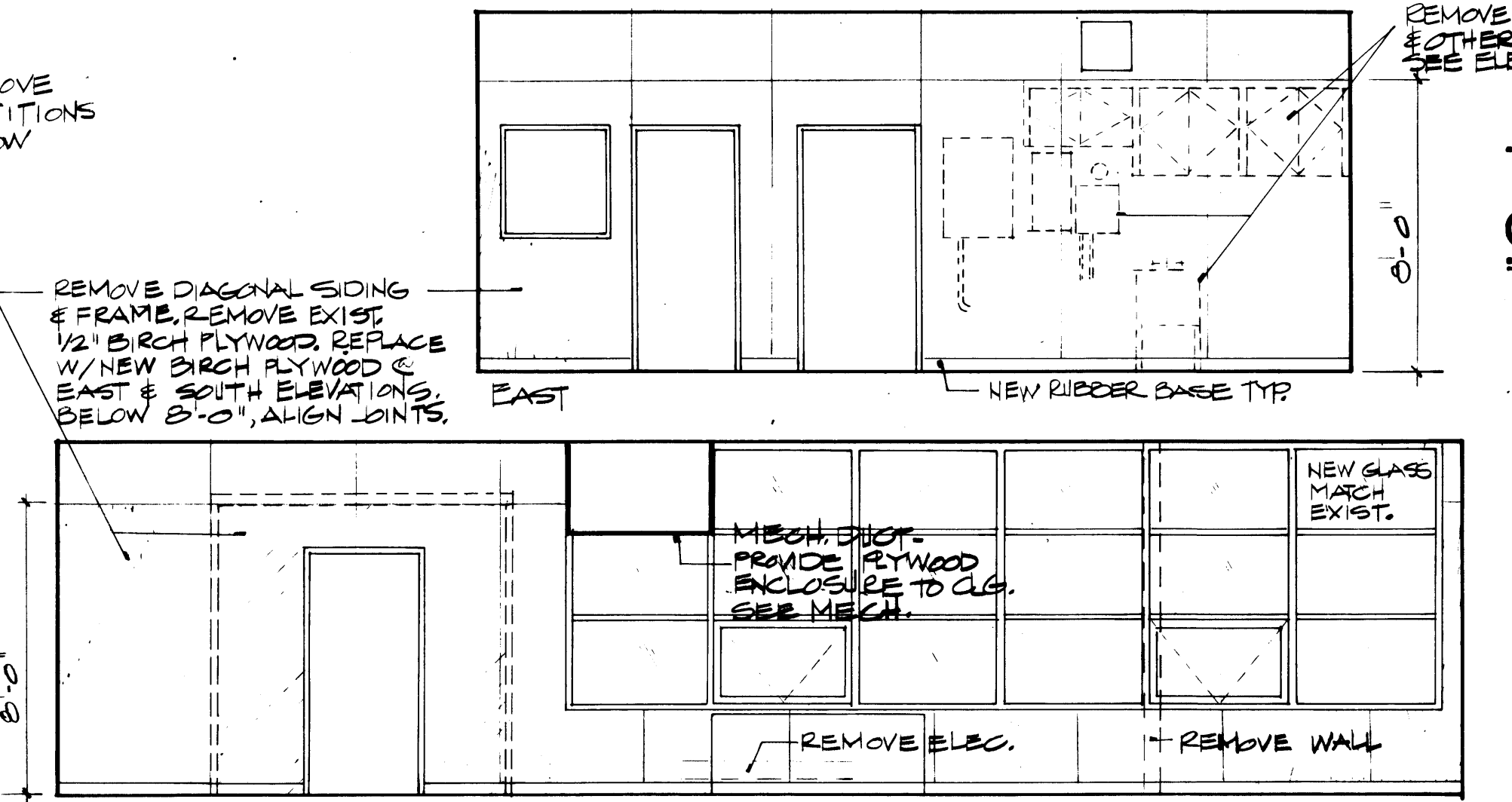


HOMER LOWER SCHOOL GROUND FLOOR PLAN 8
1/16" = 1'-0"

HOMER LOWER SCHOOL FIRST FLOOR PLAN 4
1/16" = 1'-0"



SHOP REFLECTED CLG. PLAN 25
1/8" = 1'-0"



SHOP ELEVATIONS 20
1/4" = 1'-0"

GENERAL NOTES

- 1 INSTALL NEW CARPET AND RUBBER BASE. REMOVE EXISTING CARPET AND BASE. SEE PHOTOGRAPHS FOR SCIENCE, WEIGHT ROOM AND SHOPS.
- 2 ASBESTOS WORK - SEE SPECIFICATIONS FOR SCOPE.
- 3 SHOP AREA TO BE CONVERTED INTO CLASSROOM AREA. PATCH AND LOOSE EXISTING 12" X 12" FLOOR TILE AND REMOVE RUBBER BASE. INSTALL NEW CARPET AND RUBBER BASE SUSPENDED ACOUSTICAL TILE CEILING WITH LAY-IN ELECTRICAL FIXTURES. SEE ELECTRICAL AND MECHANICAL DRAWINGS.
- 4 INSTALL NEW 20-MIN. RATED WOOD DOORS IN EXISTING H.M. FRAME.
- 5 WEIGHT ROOM TO BE CONVERTED INTO TEACHER WORKROOM. CLEAN AND REPAIR WALL SURFACES, PAINT WALLS AND CEILING. SEE PHOTOGRAPHS. (NO PAINT REQUIRED AT CORK WALL FINISH.)
- 6 REMOVE EXISTING MARLITE PANELS AND DRINKING FOUNTAINS ON NORTH WALL. REPAIR SUBSTRATE AND REPLACE WITH NEW MARLITE PANELS. SEE PHOTOGRAPHS.
- 7 SEE ENLARGED KITCHEN PLAN DETAIL 14 AND 24 ON SHEET A1 AND SHEET F1 FOR WORK REQUIRED IN THIS AREA.
- 8 LOCKERS - ALTERNATE 3 - REPLACE 109 EXISTING RECESSED 12" X 60" X 15" DEEP WALL LOCKERS WITH NEW ONES.
- 9 REPLACE APPROX. 45 EXISTING DAMAGED 12" X 12" ACOUSTICAL TILES, MATCH EXISTING PATTERN. PAINT CORRIDOR CEILING, SPEAKER BOXES AND WIREMOLD.
- 10 REMOVE EXISTING SCIENCE CABINETS AND LAB SET-UPS NORTH AND EAST WALLS AS WELL AS INSTRUCTOR'S COUNTER. SEE PHOTOGRAPHS SHEET A2.
- 11 REMOVE MARLITE PANELS FROM ALL ELEVATIONS AND INSTALL NEW 1/2" FULL HEIGHT GWB AND PAINT. SCRIBE TO EXISTING COUNTER TOP AND CABINETS REMAINING AND PROVIDE METAL EDGE.
- 12 LOWER 2 URINALS. SEE 18/A2.
- 13 REMOVE AND REPLACE EXISTING ACOUSTICAL TILE AND GWB AS REQUIRED FOR THE REMOVAL AND REPLACEMENT OF PIPING ABOVE. SEE MECH. RE-INSTALL FIXTURES, SPEAKERS, ETC. AS REQUIRED.
- 14 NEW WINDOW. SEE DETAIL 20/A2.

PROJECT RECORD DRAWINGS
FROM INFORMATION SUPPLIED
BY DERLETH BUILDERS
DATE 4/6/88

RECORD INFO. PROVIDED BY CONTRACTOR