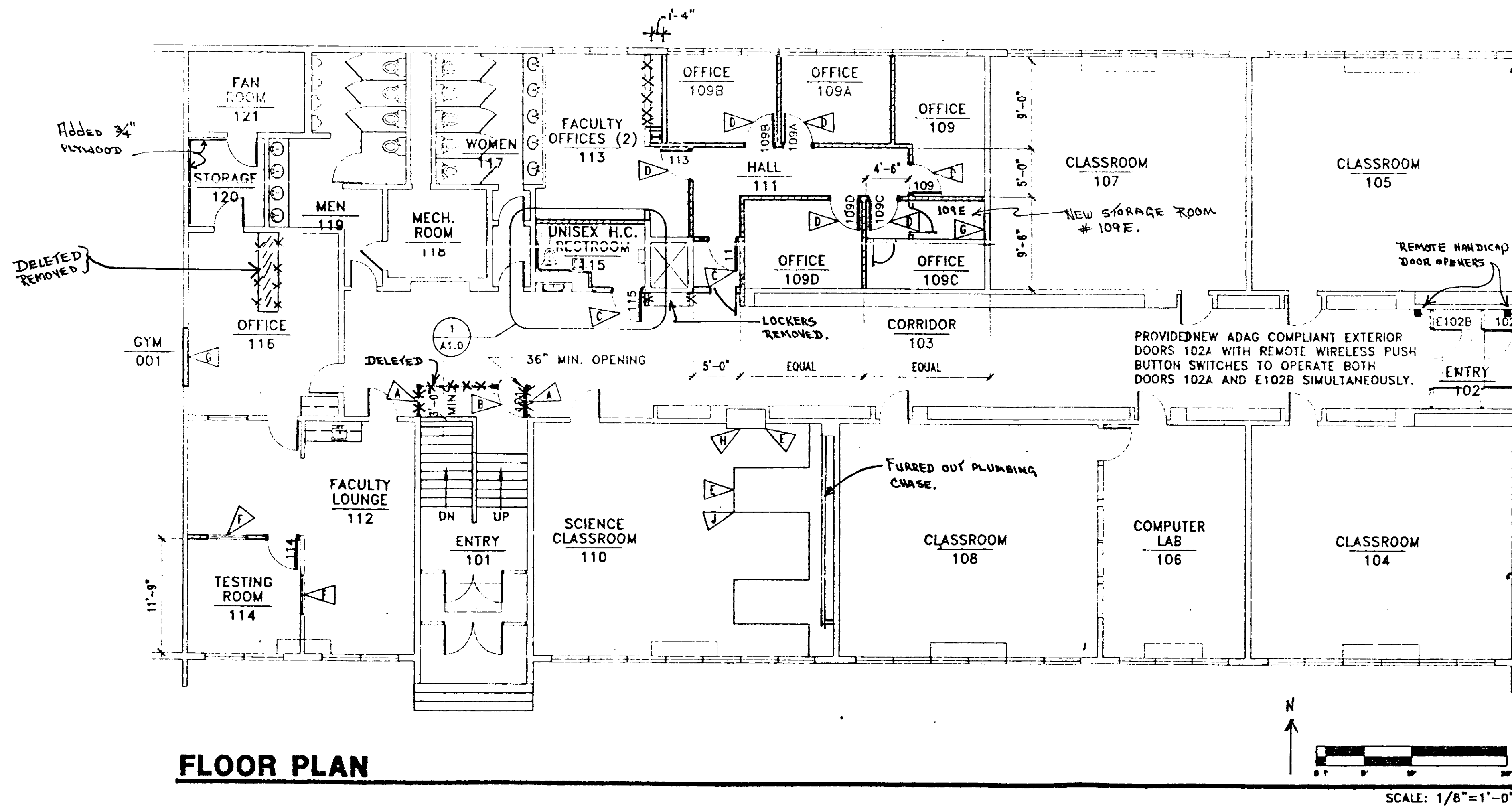


REFERENCED DEMOLITION NOTES

- ▲ REMOVE EXISTING WINDOW AND INFILL TO MATCH CONSTRUCTION
- ▲ REMOVE EXISTING CASEWORK
- ▲ REMOVE EXISTING WALL OR SEGMENT
- ▲ REMOVE EXISTING MECHANICAL EQUIPMENT OR FIXTURES
- ▲ REMOVE EXISTING DOOR AND FRAME AND INFILL TO MATCH CONSTRUCTION
- ▲ REMOVE ALL LOCKERS IN THIS AREA.

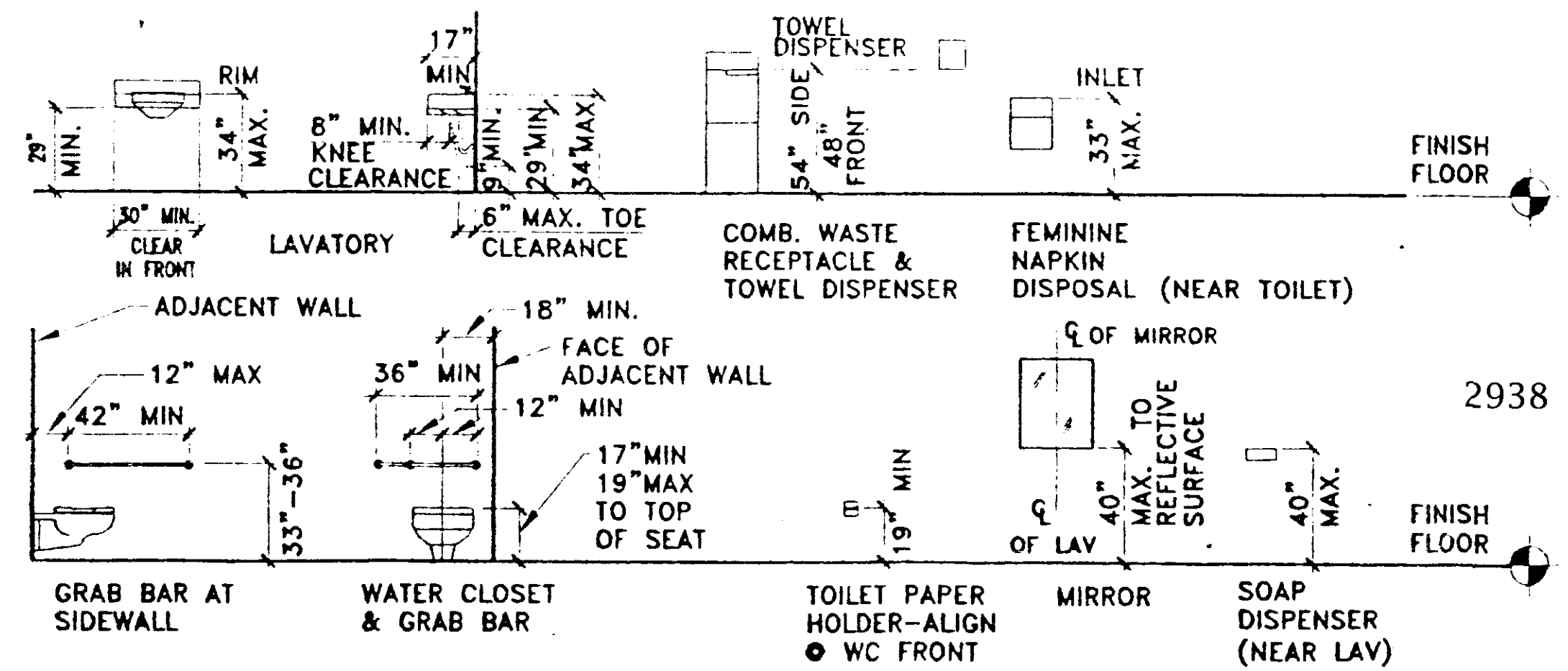
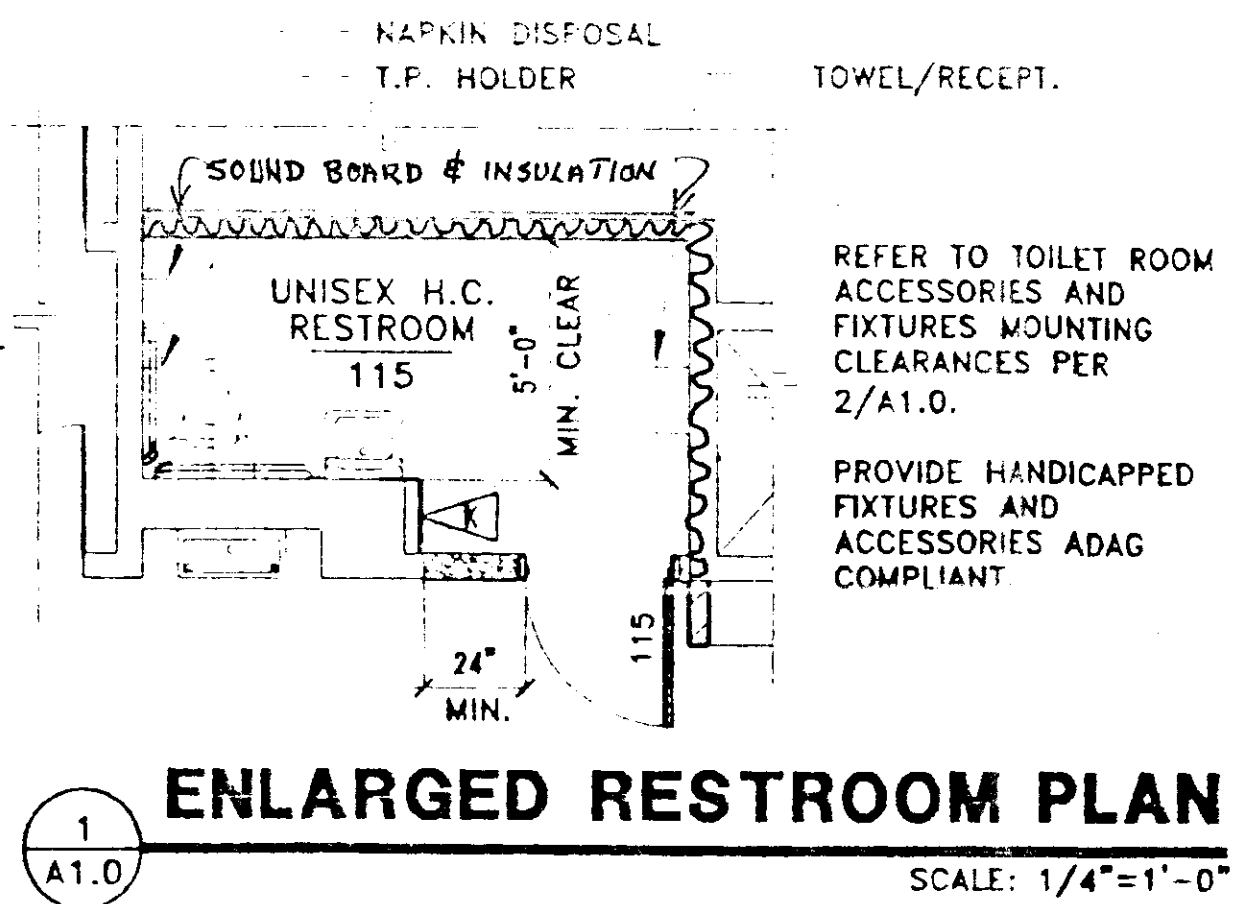
REFERENCED CONSTRUCTION NOTES

- ▲ PROVIDE SECURITY ENCLOSURE, COORDINATE WITH OWNER FOR ENCLOSURE TYPE.
- ▲ PROVIDE PANIC-EXIT DEVICE HARDWARE - THIS IS A REQUIRED EXIT.
- ▲ 20 MINUTE RATED DOOR AND FRAME. DOOR 115 HARDWARE: ANSI F21; DOOR 111 HARDWARE: ANSI F09
- ▲ NONRATED DOORS. PROVIDE ENTRANCE TYPE HARDWARE (ANSI NO. F21).
- ▲ CONTRACTOR TO COORDINATE WITH OWNER FOR TYPE, SIZE AND OPTIONS.
- ▲ NEW RELITE 4'x4' HOLLOW METAL FRAME WITH 1/4" LAMINATED SAFETY GLASS



PLAN LEGEND

- ITEMS TO BE REMOVED SHOWN DASHED
- ===== 1 HR. WALLS, METAL STUDS TO MATCH WALL WIDTH WITH 5/8" GWB EACH SIDE, THESE WALLS BUILT TO STRUCTURE ABOVE.
- ===== NEW WALLS, 3 5/8" METAL STUDS WITH 5/8" GWB EACH SIDE, TO UNDERSIDE OF CEILING.
- NEW ITEMS SHOWN BOLD
- EXISTING ITEMS SHOWN LIGHT



DESCRIPTION OF WORK

1. THE GENERAL SCOPE OF WORK IS TO REMODEL THE EXISTING SPACES FOR THE USE OF THE KACHEMAK BAY CAMPUS LEARNING/CAREER SERVICE CENTER. THIS CONSISTS OF CONVERTING A REGULAR CLASSROOM INTO A SCIENCE LAB, CONVERTING A CLASSROOM AND BREAKROOM INTO FIVE (5) PRIVATE OFFICES, ENLARGING A TOILET ROOM INTO A ADAG COMPLIANT UNISEX TOILET ROOM, CONVERTING THE FACULTY ROOM INTO AN OFFICE FOR TWO (2) FACULTY STAFF, CONVERTING TWO (2) OFFICES INTO A FACULTY LOUNGE/VISITING STAFF OFFICE AND A STUDENT TESTING ROOM. THE EXISTING COMPUTER ROOM WILL BE USED "AS-IS" AS WELL AS THE BALANCE OF THE SCHOOL SPACES ON THE UPPER FLOOR. THE LOWER LEVEL IS NOT PART OF THIS PROJECT, HOWEVER AN ADDITIONAL WALL/DOOR IS ADDED AT THE TOP OF THE STAIRS TO PROVIDE SECURITY TO THE UPPER FLOOR DURING AFTER SCHOOL HOURS.

GENERAL DEMOLITION NOTES

1. THIS DRAWING SHOWS THE GENERAL AREAS OF DEMOLITION. PERFORM ALL OTHER DEMOLITION WORK REQUIRED TO COMPLETE THE WORK DESCRIBED IN THE CONTRACT DOCUMENTS.
2. COORDINATE THE DEMOLITION WORK OF ALL TRADES TO MINIMIZE DAMAGE AND DISRUPTION TO THE EXISTING FACILITY. ALL DAMAGED AREAS MUST BE REPAIRED TO MATCH ADJACENT FINISHES.
3. REFERENCE MECHANICAL AND ELECTRICAL DRAWINGS FOR ADDITIONAL REQUIREMENTS.
4. THIS DRAWING SHOWS THE GENERAL AREAS OF DEMOLITION. PERFORM MINOR DEMOLITION INCIDENTAL AS REQUIRED TO COMPLETE THE WORK DESCRIBED.
5. REFERENCE MECHANICAL AND ELECTRICAL DRAWINGS FOR ADDITIONAL REQUIREMENTS.
6. ALL EXISTING CONDITIONS THAT ARE DISTURBED AS A RESULT OF THE DEMOLITION OR NEW CONSTRUCTION SHALL BE REPLACED OR REPAIRED TO PRE-EXISTING CONDITIONS.
7. ALL MATERIAL GENERATED BY DEMOLITION SHALL BE DISPOSED OF OFF-SITE AT A CONTRACTOR PROVIDED DISPOSAL SITE.
8. REMOVE EXISTING MATERIAL AND PREPARE SUBSTRATES TO RECEIVE NEW MATERIAL AND FINISHES. PREPARATION OF SUBSTRATE SHALL BE ACCOMPLISHED IN A MANNER TO CONFORM TO APPLICATION REQUIREMENTS OF THE MANUFACTURER OF THE FINISHES AND MATERIALS.
9. REMOVE FLOOR FINISH MATERIALS IN AREAS OF REMODEL. PREPARE SUBSTRATE FOR RECEIVING NEW FLOOR MATERIALS. NEW FLOOR MATERIALS SHALL BE PROVIDED AND INSTALLED BY THE OWNER.

GENERAL NOTES

1. DIMENSIONS ARE FACE OF FRAMING MEMBER UNLESS NOTED OTHERWISE.
2. PATCH AND REFINISH ALL SURFACES AFFECTED BY DEMOLITION FLUSH WITH ADJACENT SURFACES. EXISTING PAINTED SURFACES RECEIVING PATCHES SHALL BE REPAINTED OVER THE ENTIRE SURFACE (TO MATCH EXISTING) TO THE NEXT ADJACENT BREAK IN THE WALL OR CEILING PLANE. REFER TO THE MECHANICAL AND ELECTRICAL DRAWINGS FOR REMOVAL OR INSTALLATION OF PIPING, DUCT WORK, FIXTURES, CONDUIT, ETC. IN EXISTING WALLS OR CEILINGS.
3. REMOVE WALL MOUNTED EQUIPMENT AND FURNISHINGS SUCH AS TACKBOARDS, SHELVING, CABINETS, ETC. FROM ALL ROOMS SCHEDULED FOR DEMOLITION OR REMODEL. REINSTALL AS DIRECTED BY THE OWNER.

JOB NO. 95012.06
 DESIGN: GHM
 CHECK: DGG
 DRAWN: DD, GHM
 DATE: 07-29-97
 REVISIONS: -

McCOOL CARLSON GREEN
 ARCHITECTURE INTERIOR DESIGN SPACE PLANNING
 901 W. 28TH AVENUE, ANCHORAGE, AK (907) 563-8474

SHEMATIC DESIGN - NOT FOR CONSTRUCTION

KACHEMAK BAY CAMPUS - REMODEL
 HOMER, ALASKA
 UNIVERSITY OF ALASKA ANCHORAGE

A1.0

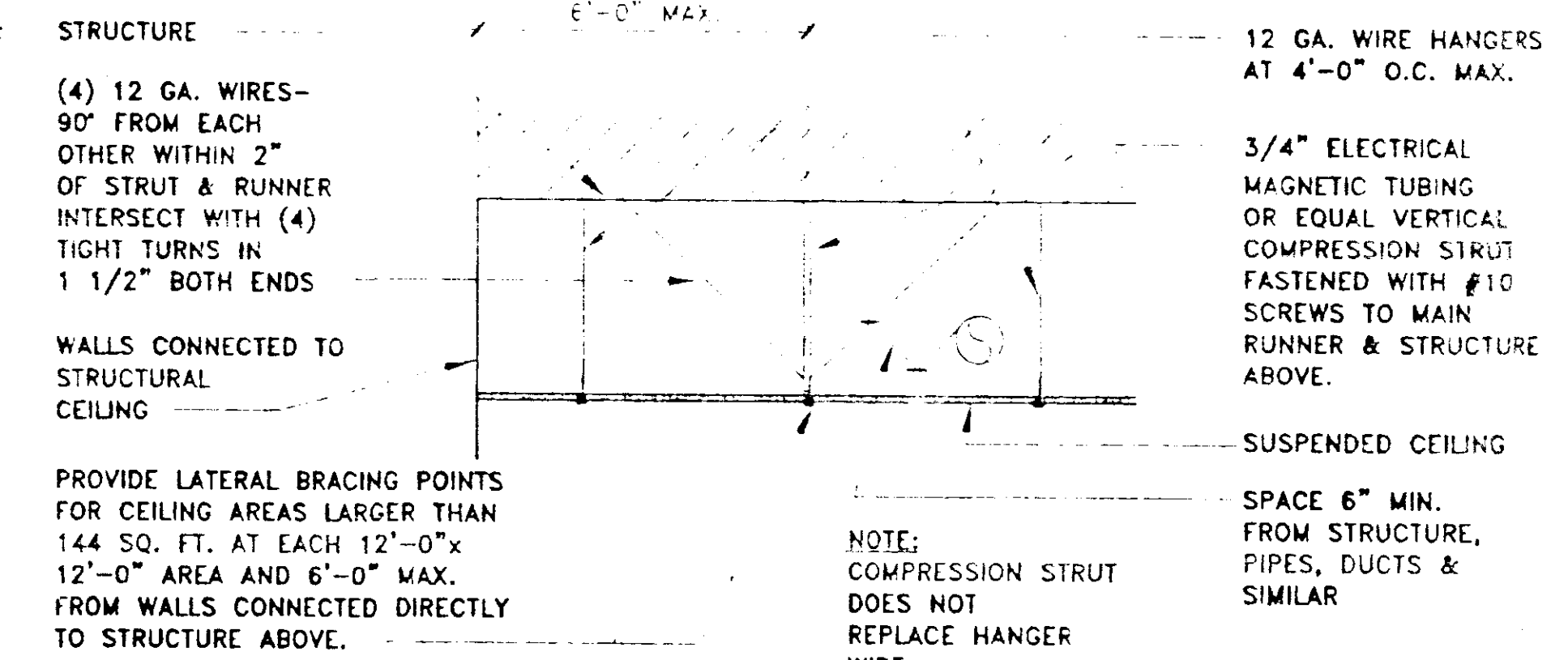
DEMO PLAN, FLOOR PLAN
DEMO NOTES, CONSTRUCTION NOTES

SHEET NO. 2938

CEILING NOTES

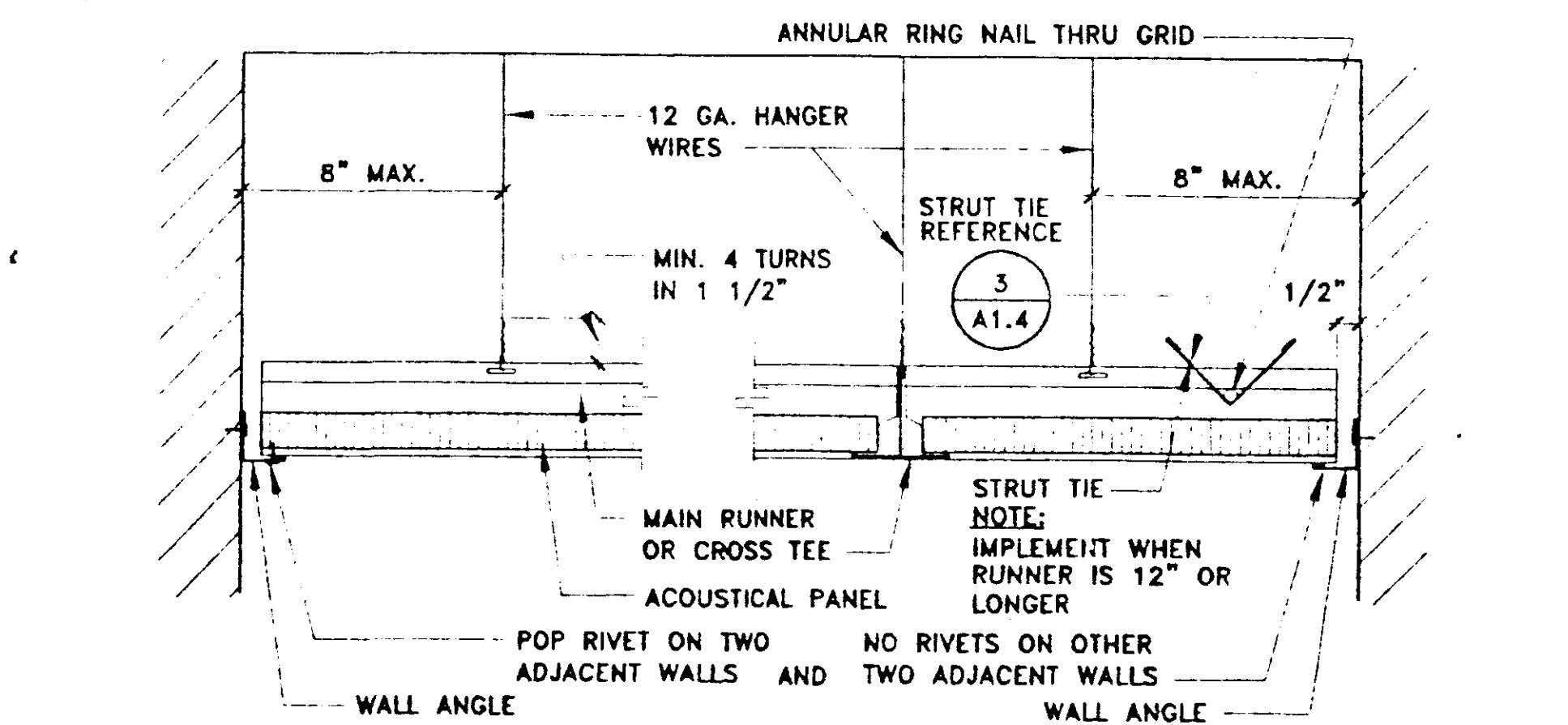
1. REPLACE DAMAGED CEILING TILES AND GRID WITH SYSTEM TO MATCH EXISTING. ALL EXISTING SUSPENDED CEILING THAT ARE DISTURBED, MODIFIED OR REPLACED SHALL CONFORM TO 1994 UNIFORM BUILDING CODE STANDARD (UBC) NO. 25-2. REFERENCE DETAILS 1, 2 & 3 ON SHEET A2.0.
2. PATCH AND REPAIR EXISTING ACOUSTICAL CEILING TILES (12x12) AT LOCATIONS OF WALL DEMO INTERFACING WITH THE EXISTING CEILINGS.

- REPAIR AND PATCH IN 12x12 CEILING TILES TO MATCH EXISTING.
- REPAIR AND PATCH GWB CEILING TO MATCH EXISTING.



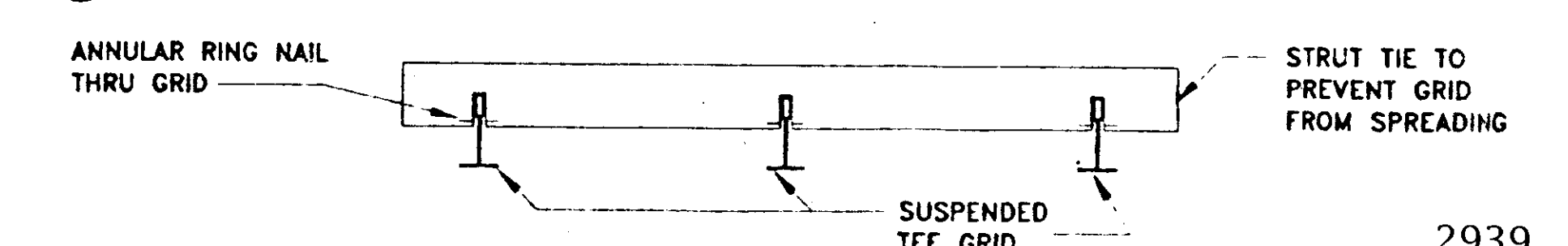
1 LATERAL BRACING, TYP.

A2.0 NO SCALE



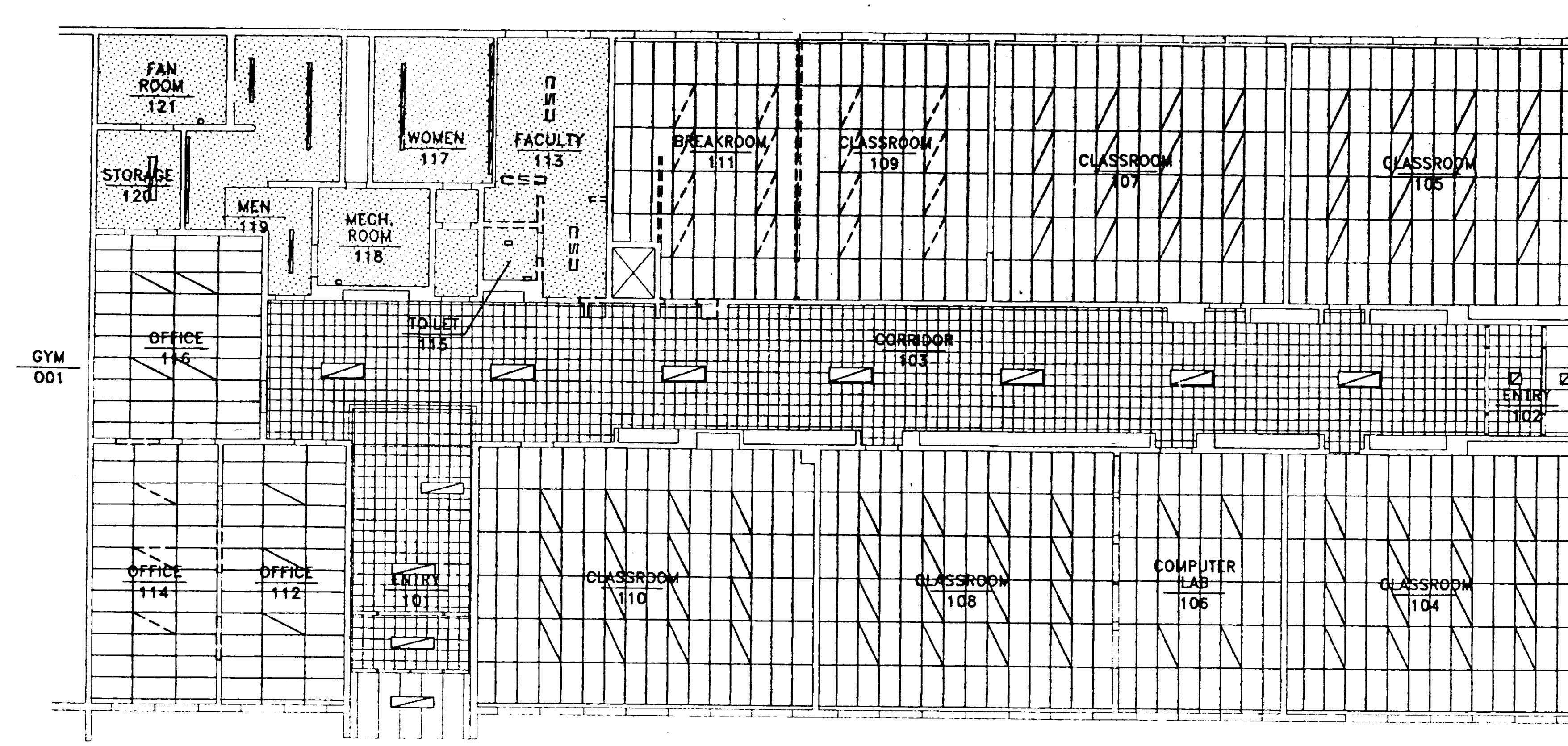
2 PERIMETER ATTACHMENT

A2.0 NO SCALE

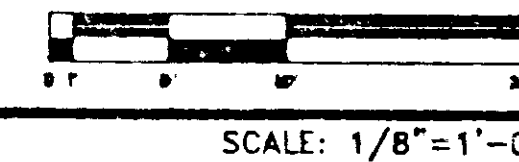


3 STRUT TIE, TYPICAL

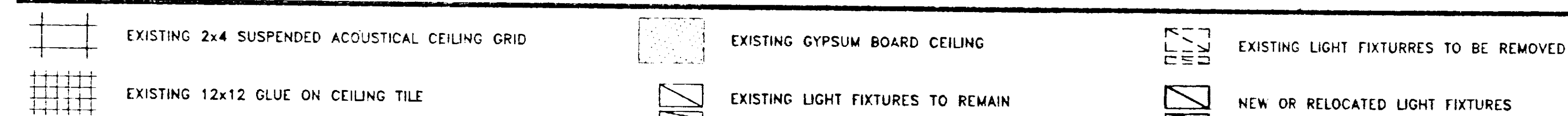
A2.0 NO SCALE



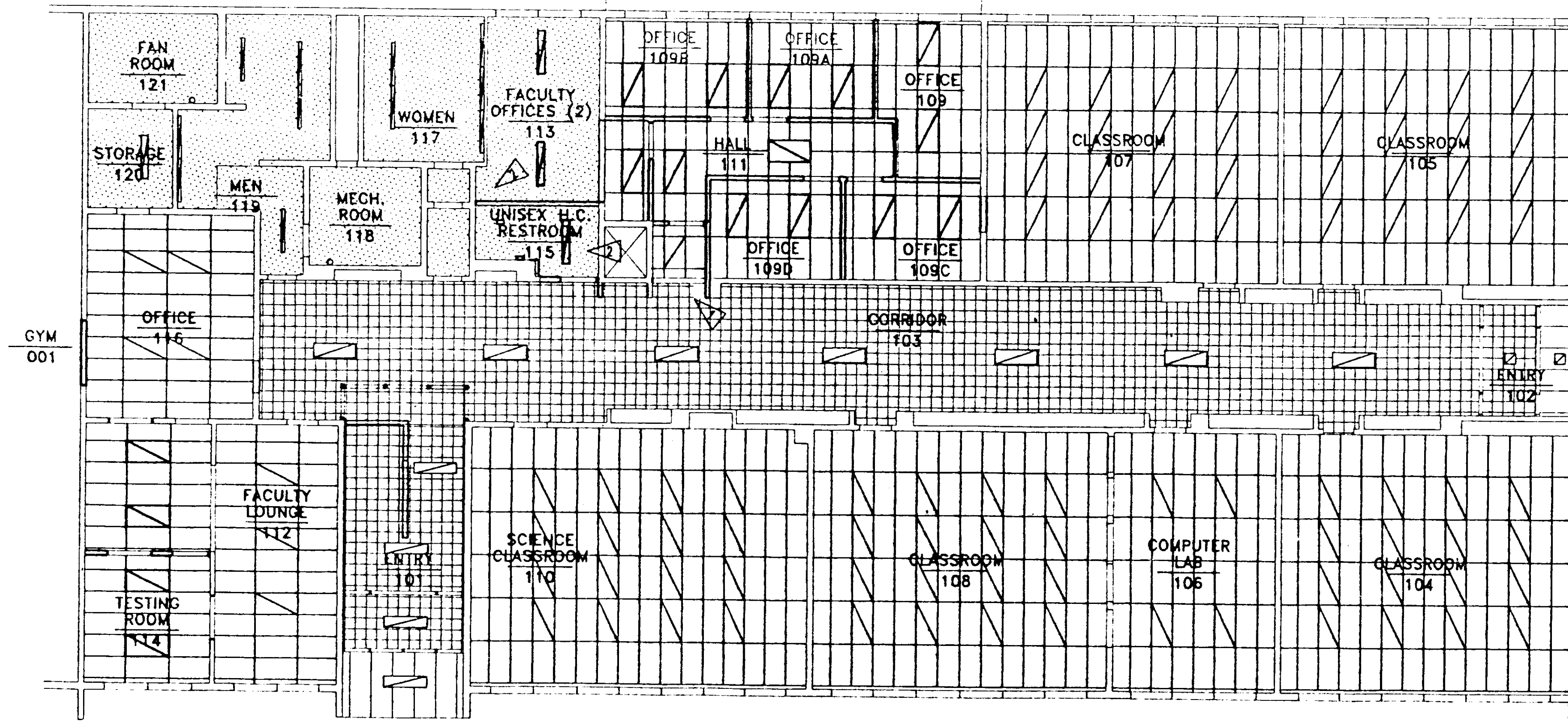
CEILING DEMOLITION PLAN



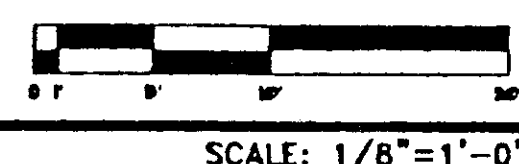
CEILING LEGEND



BRACING AND ATTACHMENTS OF CEILING IN THIS AREA PER DETAILS 1, 2 & 3 SHEET A2.0



CEILING PLAN



JOB NO. 95012.06
 DESIGNED: GHM
 DRAWN: DD, GHM
 DATE: 07-29-97
 CHECKED: DOG

MCCOOL CARLSON GREEN
 ARCHITECTURE INTERIOR DESIGN SPACE PLANNING
 901 W. 29TH AVENUE, ANCHORAGE, AK (907) 563-8474

SHEET NO. **A2.0**

KACHEMAK BAY CAMPUS - REMODEL
 HOMER, ALASKA
 UNIVERSITY OF ALASKA ANCHORAGE

CEILING DEMO PLAN, CEILING PLAN
DEMO NOTES, CONSTRUCTION NOTES

2:17:26 PM
 Tuesday, July 29, 1997
 S126A20.dwg
 PTERODACTYL

2939

ELECTRICAL SPECIFICATIONS

SCOPE OF WORK - FURNISH AND INSTALL ALL MATERIAL AND EQUIPMENT FOR A COMPLETE AND WORKABLE ELECTRICAL SYSTEM AS INDICATED ON THE DRAWINGS AND IN THESE SPECIFICATIONS.

STANDARDS, CODES AND REGULATIONS - COMPLY WITH THE LATEST ADOPTED EDITION OF THE NATIONAL ELECTRICAL CODE, UNIFORM BUILDING CODE, AND UNIFORM FIRE CODE INCLUDING ALL STATE AND LOCAL AMENDMENTS TO THESE CODES.

DRAWINGS - THE DRAWINGS ARE DIAGRAMMATIC, NOT NECESSARILY SHOWING ALL OFFSETS OR EXACT LOCATIONS OF FIXTURES, EQUIPMENT, ETC. UNLESS SPECIFICALLY DIMENSIONED. REVIEW THE DRAWINGS AND SPECIFICATIONS FOR WORK TO BE DONE BY OTHER CRAFTS BUT INSTALLED IN ACCORDANCE WITH THIS SECTION. BRING QUESTIONABLE OR OBSCURE ITEMS, APPARENT CONFLICTS BETWEEN PLANS AND SPECIFICATIONS, GOVERNING CODES OR UTILITIES REGULATIONS TO THE ATTENTION OF THE ARCHITECT. CODES, ORDINANCES, REGULATIONS, MANUFACTURER'S INSTRUCTIONS OR STANDARDS TAKE PRECEDENCE WHEN THEY ARE MORE STRINGENT OR CONFLICT WITH THE DRAWINGS AND SPECIFICATIONS.

RECORD DRAWINGS - MARK UP A CLEAN SET OF DRAWINGS AS THE WORK PROGRESSES TO SHOW THE DIMENSIONED LOCATION AND ROUTING OF ALL ELECTRICAL WORK WHICH WILL BECOME PERMANENTLY CONCEALED. SHOW ROUTING OF WORK IN PERMANENTLY CONCEALED BLIND SPACES WITHIN THE BUILDING. SHOW COMPLETE ROUTING AND SIZING OF ANY SIGNIFICANT REVISIONS TO THE SYSTEMS SHOWN.

WORKMANSHIP - INSTALLATION OF ALL WORK SHALL BE MADE SO THAT ITS SEVERAL COMPONENT PARTS SHALL FUNCTION AS A WORKABLE SYSTEM COMPLETE WITH ALL ACCESSORIES NECESSARY FOR ITS OPERATION. ALL MATERIAL AND EQUIPMENT SHALL BE INSTALLED IN ACCORDANCE WITH THE MANUFACTURER'S RECOMMENDATIONS, INSTRUCTIONS AND/OR INSTALLATION DRAWINGS AND IN ACCORDANCE WITH NECA STANDARD PRACTICES AND EQUIPMENT SHALL BE NEW AND SHALL CONFORM WITH APPLICABLE INDUSTRY STANDARDS, NEW STANDARDS AND UNDERWRITERS LABORATORIES STANDARDS WHERE APPLICABLE.

WARRANTY - THE CONTRACTOR SHALL GUARANTEE ALL WORK EXECUTED UNDER THIS CONTRACT TO BE FREE FROM DEFECTS IN MATERIALS AND WORKMANSHIP FOR ONE YEAR FROM BENEFICIAL OCCUPANCY. ANY FAULTY MATERIALS OR WORKMANSHIP SHALL BE REPAIRED OR REPLACED TO THE SATISFACTION OF THE OWNER DURING THE GUARANTEE PERIOD.

PERMITS - SECURE AND PAY FOR ALL FEES, PERMITS, ETC. REQUIRED BY LOCAL AND STATE AGENCIES AND ALL LOCAL UTILITY COMPANIES. COSTS OF LINE EXTENSIONS TO THE METER ARE TO BE PAID BY THE OWNER.

REFERENCE SYMBOLS - THE ELECTRICAL "LEGEND" ON THE DRAWINGS IS A STANDARDIZED VERSION, AND ALL SYMBOLS SHOWN MAY NOT BE USED. USE THE "LEGEND" AS A REFERENCE FOR THE SYMBOLS USED ON THE DRAWINGS.

ELECTRICAL DEMOLITION - DISCONNECT ELECTRICAL SYSTEMS IN WALLS, FLOORS, AND CEILINGS SCHEDULED FOR REMOVAL. PROVIDE TEMPORARY WIRING AND CONNECTIONS TO MAINTAIN ALL EXISTING ELECTRICAL SYSTEMS (TELEPHONE, FIRE ALARM, LIGHTING, ELECTRICAL SERVICE, ETC.) IN SERVICE DURING CONSTRUCTION. DISABLE SYSTEMS ONLY TO MAKE SWITCHOVERS AND CONNECTIONS. OBTAIN PERMISSION FROM OWNER AT LEAST 24 HOURS BEFORE PARTIAL OR COMPLETE REMOVAL OF ELECTRICAL SYSTEM. MINIMIZE OUTAGE DURATION AND MAKE TEMPORARY CONNECTIONS TO MAINTAIN SERVICE IN AREAS ADJACENT TO WORK AREA. WHEN WORK MUST BE PERFORMED ON ENERGIZED EQUIPMENT OR CIRCUITS, USE PERSONNEL EXPERIENCED IN SUCH OPERATIONS. REMOVE, RELOCATE AND EXTEND EXISTING INSTALLATIONS TO ACCOMMODATE NEW CONSTRUCTION. REMOVE ABANDONED WIRING TO SOURCE OF SUPPLY. REMOVE EXPOSED ABANDONED CONDUIT, INCLUDING ABANDONED CONDUIT ABOVE ACCESSIBLE CEILING FINISHES WHERE ABANDONED CONDUIT ENTERS EXISTING SURFACES TO REMAIN. CUT CONDUIT FLUSH WITH WALLS AND FLOORS, AND PATCH SURFACES. DISCONNECT ABANDONED OUTLETS AND REMOVE DEVICES. REMOVE ABANDONED OUTLETS IF CONDUIT SERVICING THEM IS ABANDONED AND REMOVED. DISCONNECT AND REMOVE ELECTRICAL DEVICES AND EQUIPMENT SERVING UTILIZATION EQUIPMENT THAT HAS BEEN REMOVED. DISCONNECT AND REMOVE ABANDONED LUMINAIRE SYSTEMS. REMOVE BRACKETS, STEMS, HANGERS AND OTHER ACCESSORIES. REPAIR ADJACENT CONSTRUCTION AND FINISHES DAMAGED DURING DEMOLITION AND EXTENSION WORK. MAINTAIN ACCESS TO EXISTING ELECTRICAL INSTALLATIONS WHICH REMAIN ACTIVE.

IDENTIFICATION - JUNCTION BOXES: MARK ALL CIRCUIT NUMBERS OF WIRING ON ALL JUNCTION BOXES WITH SHEET STEEL COVERS. MARK WITH INDELEBIL BLACK MARKER ON EXPOSED JUNCTION BOXES IN PUBLIC AREAS, MARK ON INSIDE OF COVER. MARK ALL FIRE ALARM SYSTEM JUNCTION BOXES WITH SHEET STEEL COVERS WITH "FA". MARK WITH INDELEBIL RED MARKER. MARK ALL OTHER SPECIAL SYSTEM JUNCTION BOXES WITH SHEET STEEL COVERS.

CONDUIT - ALL WIRING SHALL BE INSTALLED IN METALLIC RACEWAY. RACEWAY SHALL BE INSTALLED CONCEALED EXCEPT AT SURFACE MOUNTED CABINETS, MOTORS AND EQUIPMENT CONNECTIONS. UNLESS OTHERWISE NOTED ON THE DRAWINGS, THE RACEWAY SYSTEM SHALL BE USED AS THE EQUIPMENT GROUNDING CONDUCTOR AND ALL FITTINGS, CONNECTORS, BOXES, ETC. SHALL BE APPROVED FOR USE AS A GROUNDING MEANS. UTILIZE GALVANIZED RIGID STEEL OR INTERMEDIATE METAL CONDUIT FOR SERVICE ENTRANCE, FEEDERS, IN WET LOCATIONS, IN DIRECT CONTACT WITH CONCRETE OR BELOW SLAB ON GRADE. ELECTRICAL METALLIC TUBING MAY BE USED IN ALL

CONCEALED, DRY, INTERIOR LOCATIONS. UTILIZE SHORT EXTENSIONS (36 INCHES MAXIMUM) OF FLEXIBLE CONDUIT FOR CONNECTION OF ALL MOTORS AND OTHER EQUIPMENT SUBJECT TO VIBRATION. UTILIZE LIQUIDTIGHT FLEXIBLE CONDUIT FOR MOTOR AND EQUIPMENT CONNECTIONS IN WET LOCATIONS. PAINT ALL EXPOSED RACEWAYS TO MATCH THE SURFACE TO WHICH IT IS ATTACHED OR CROSSES. COMPLETELY AND THOROUGHLY SWAB RACEWAY SYSTEM BEFORE INSTALLING CONDUCTORS.

CONDUCTORS - ALL CONDUCTORS SHALL BE COPPER WITH TYPE XHHW, THWN, THW OR THHN INSULATION. MINIMUM BRANCH CIRCUIT CONDUCTOR SIZE SHALL BE 12 AWG. MINIMUM CONTROL CIRCUIT CONDUCTOR SIZE SHALL BE #18 AWG. WIRING IN LIGHTING FIXTURE CHANNELS SHALL BE COPPER WITH TYPE THHN OR OTHER INSULATION RATED 90 DEGREES C OR HIGHER, 600 VOLT. PULL ALL CONDUCTORS INTO THE RACEWAY AT THE SAME TIME. COLOR CODE CONDUCTORS AS FOLLOWS: 120/208 VOLT SYSTEMS: BLACK, RED, BLUE AND WHITE. USE PROPERLY SIZED INSULATED SPRING WIRE CONNECTORS WITH PLASTIC CAPS FOR ALL CONDUCTORS #8 AWG AND SMALLER.

OUTLET BOXES - PROVIDE GALVANIZED OR CADMIUM PLATED, ONE PIECE PRESSED STEEL OUTLET BOXES 4 INCH SQUARE OR OCTAGONAL, 1 1/2 INCHES DEEP MINIMUM SIZE FOR USE IN INTERIOR AREAS. PROVIDE CAST ALUMINUM OR FERROUS TYPE BOXES WITH GASKETED COVER, THREADED HUBS AND NEMA 3R RATING FOR USE IN EXTERIOR OR WET LOCATIONS. PROVIDE FIXTURE OUTLETS WITH 1/2 INCH MALE FIXTURE STUDS AS REQUIRED. PROVIDE OUTLET BOXES AS SHOWN ON THE DRAWINGS, AND AS REQUIRED FOR SPICES, TAPS, WIRE PULLING, EQUIPMENT CONNECTIONS, DEVICE INSTALLATION AND CODE COMPLIANCE. DO NOT INSTALL BOXES BACK-TO-BACK IN WALLS. PROVIDE A MINIMUM 6 INCH SEPARATION FOR MINIMUM SOUND TRANSMISSION. USE MULTIPLE-GANG BOXES WHERE MORE THAN ONE DEVICE ARE MOUNTED TOGETHER; DO NOT USE SECTIONAL BOXES. SUPPORT BOXES INDEPENDENTLY OF CONDUIT. COORDINATE MOUNTING HEIGHTS AND LOCATIONS OF OUTLETS MOUNTED ABOVE COUNTERS, BENCHES AND BACKSPASHES.

RECEPTACLES - PROVIDE NEMA 5-20R DUPLEX GROUNDING TYPE RECEPTACLES WITH IVORY FINISH, UL NO. 498 APPROVED, SELF-GROUNDING, CERTIFIED TO COMPLY WITH NEMA WD-1-4.02 THROUGH 4.11, 1979 TESTS. SCREW TERMINAL OR SCREW CLAMP TYPE ONLY. SPRING CLAMPED TYPE TERMINATIONS ARE NOT ACCEPTABLE. PROVIDE DURABLE CONFORMANCE RECEPTACLES WITH CLASS "A" INTEGRAL GROUND FAULT CURRENT INTERRUPTER AND SPECIFIC-USE RECEPTACLES WHERE INDICATED ON THE DRAWINGS. UNLESS OTHERWISE NOTED ON THE DRAWINGS, INSTALL RECEPTACLES 18 INCHES ABOVE FINISH FLOOR, 4 INCHES ABOVE COUNTERS AND BACKSPASHES WITH GROUNDING POLE ON BOTTOM. UNLESS OTHERWISE NOTED DIMENSIONS ARE TO CENTERLINE OF OUTLET.

SWITCHES - PROVIDE NEMA WD-1 20 AMPERE, 120/277 VOLT AC GENERAL USE SNAP SWITCH, UL NO. 20 LISTED, SELF-GROUNDING BINDING SCREW TYPE TERMINALS WITH IVORY TOGGLE, SINGLE POLE, DOUBLE POLE, THREE WAY OR FOUR WAY AS INDICATED ON THE DRAWINGS. INSTALL SWITCHES 48 INCHES ABOVE FINISHED FLOOR, OFF POSITION DOWN.

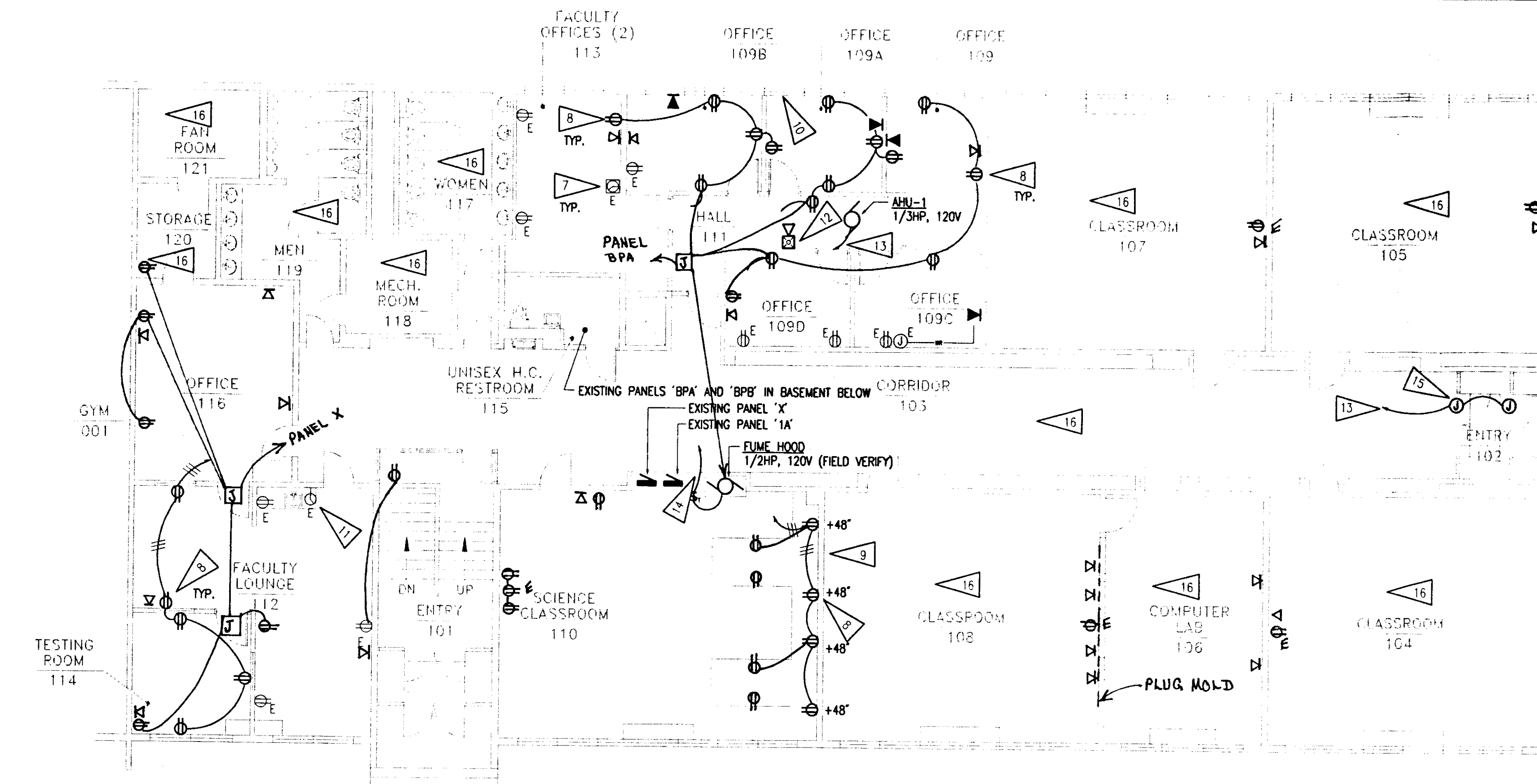
DEVICE PLATES - PROVIDE UL LISTED ONE PIECE ROUNDED EDGE "STREAMLINE" DESIGN FLUSH DEVICE PLATES OF SATIN FINISH 430 STAINLESS STEEL WITH METAL COUNTER SUNK SCREWS TO MATCH DEVICE PLATE. PROVIDE GALVANIZED DEVICE PLATES WHERE EXPOSED WIRING IS PERMITTED. PROVIDE BUSHED CENTER OR TELEPHONE JACK OPENING DEVICE PLATES FOR TELEPHONE OUTLETS. VERIFY EXACT TYPE OF DEVICE PLATE WITH TELEPHONE UTILITY PRIOR TO ORDERING.

LIGHTING EQUIPMENT - PROVIDE AND INSTALL ALL LIGHTING EQUIPMENT OR APPROVED EQUAL AS SHOWN ON THE DRAWINGS. PROVIDE LIGHTING EQUIPMENT COMPLETE, WIRED, ASSEMBLED, WITH PROPER FLANGES, MOUNTING SUPPORTS, HARDWARE, ETC. ALL LIGHTING EQUIPMENT INSTALLED IN LAY-IN TYPE CEILING SHALL BE PROVIDED WITH SAFETY CHAINS, CAPABLE OF SUPPORTING 200 POUNDS, SECURELY FASTENED TO THE LIGHT FIXTURE AND THE BUILDING STRUCTURE SO THAT NO PART OF THE FIXTURE WILL DROP BELOW A HEIGHT OF 7'-6" ABOVE THE FLOOR IN THE EVENT OF A CEILING SUSPENSION SYSTEM FAILURE. PROVIDE ENERGY SAVING LAMPS AND BALLASTS FOR ALL FLUORESCENT FIXTURES. UNLESS OTHERWISE NOTED ON THE DRAWINGS, FLUORESCENT LAMPS SHALL BE 3500 DEGREE K, TRI-PHOSPHOR TYPE WITH A MINIMUM CR OF 82.

EQUIPMENT CONNECTIONS - PROVIDE WIRING AND CONNECTION OF EQUIPMENT REQUIRING ELECTRICAL POWER BUT SPECIFIED UNDER OTHER DIVISIONS OF THE SPECIFICATIONS. REVIEW EQUIPMENT SUBMITTALS PRIOR TO INSTALLATION AND ELECTRICAL ROUGH-IN. VERIFY LOCATION, SIZE, TYPE OF CONNECTIONS, AND THAT EQUIPMENT IS READY FOR ELECTRICAL CONNECTION. MAKE WIRING CONNECTIONS IN CONTROL PANEL OR IN WIRING COMPARTMENT OF PREVIOUS EQUIPMENT IN ACCORDANCE WITH THE MANUFACTURER'S INSTRUCTIONS. PROVIDE INTERCONNECTING WIRING AND DISCONNECTS WHERE REQUIRED.

FRACTIONAL HORSEPOWER MANUAL STARTER - NEMA ICS 2; AC GENERAL-PURPOSE CLASS A MANUALLY OPERATED, NUMBER OF POLES AS REQUIRED BY THE LOAD SERVED, FULL-VOLTAGE CONTROLLER FOR FRACTIONAL HORSEPOWER INDUCTION MOTORS, WITH THERMAL OVERLOAD UNIT, RED PILOT LIGHT, AND TOGGLE OPERATOR.

FIRE ALARM - PROVIDE NEW HORN/STROBE UNITS AND SMOKE DETECTORS AS REQUIRED IN THE NEW AREAS TO MATCH EXISTING AREAS. RELOCATE EXISTING HORN/STROBE UNIT IN BREAKROOM 111 TO HALL 111 AND RECONNECT TO EXISTING CIRCUIT.

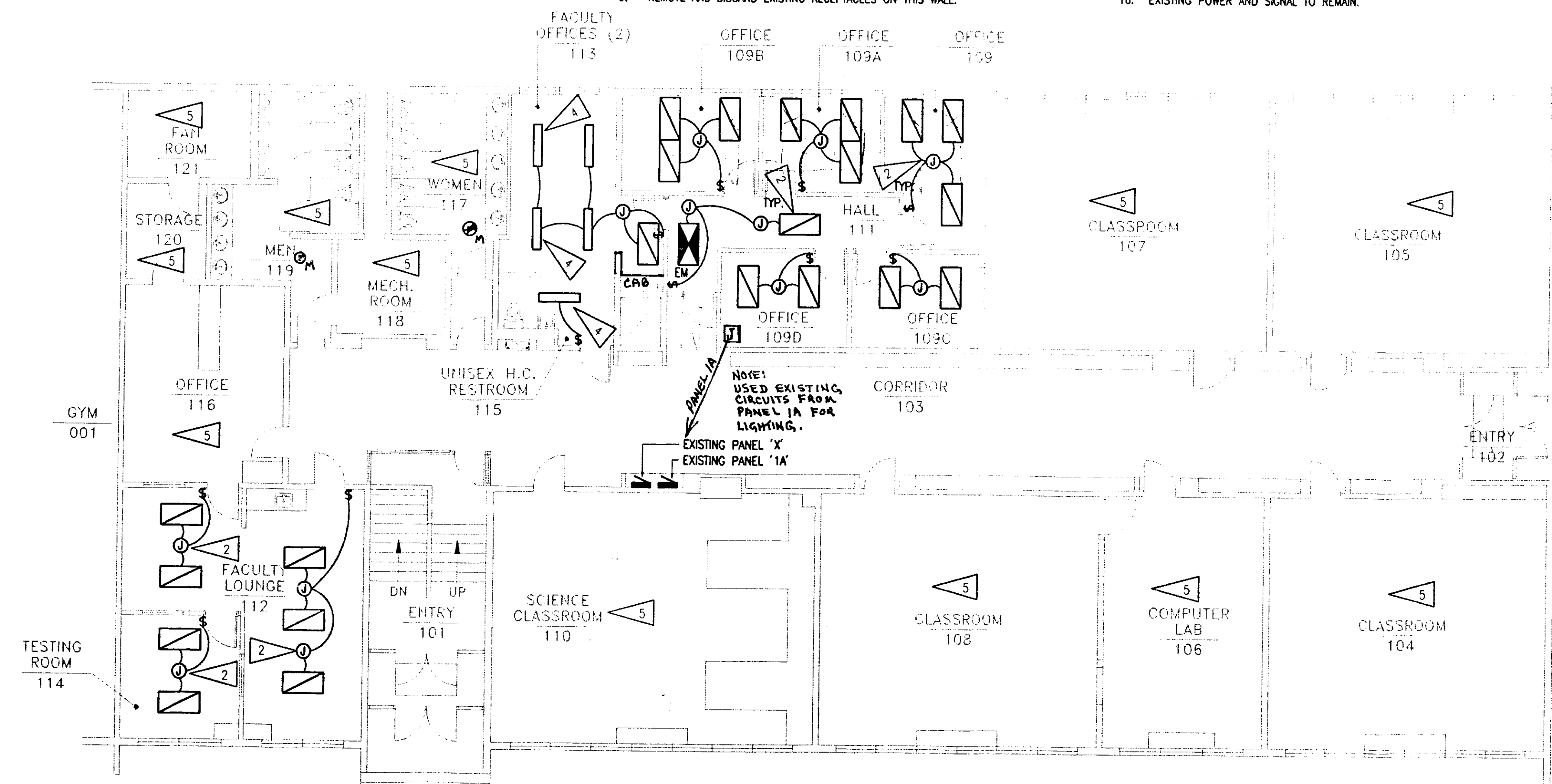


1 POWER PLAN - REMODEL

SCALE: 1/8" = 1'-0"

NOTES:

- SEE SHEET A2.0 FOR LIGHTING DEMOLITION. REMOVE ALL ELECTRICAL IN WALLS AND CEILINGS TO BE DEMOLISHED.
- REUSE EXISTING 2' X 4' RECESSED FLUORESCENT LIGHTING FIXTURES. CLEAN AND RELAMP FIXTURES. RECONNECT FIXTURES TO EXISTING CIRCUITS AS REQUIRED.
- REUSE EXISTING EMERGENCY LIGHTING FIXTURE OR PROVIDE NEW EMERGENCY BATTERY IN EXISTING FIXTURE. PROVIDE CONNECTION TO UNSWITCHED CONDUCTORS FOR BATTERY POWER.
- REUSE EXISTING SURFACE MOUNTED FLUORESCENT FIXTURES. CLEAN AND RELAMP FIXTURES. PROVIDE NEW FIXTURES TO MATCH EXISTING AS REQUIRED.
- EXISTING LIGHTING AND SWITCHING TO REMAIN.
- SEE SHEET A1.0 FOR POWER AND SIGNAL DEMOLITION. REMOVE AND DISCARD EXISTING DEVICES IN WALLS TO BE REMOVED OR DISTURBED. TURN OVER SPECIAL SYSTEM EQUIPMENT NOT BEING REUSED TO OWNER.
- EXISTING CLOCK/SPEAKER AND CALL-IN SWITCH TO REMAIN.
- NEW DUPLEX RECEPTACLES. CONNECT TO EXISTING RECEPTACLE CIRCUITS. CONNECT TO EXISTING SPACE 20A, 1 POLE CIRCUIT BREAKERS IN PANEL 'BPA' IF ADDITIONAL CIRCUITS ARE REQUIRED.
- REMOVE AND DISCARD EXISTING RECEPTACLES ON THIS WALL.
- REMOVE AND DISCARD EXISTING SURFACE WIREWAY ON THIS WALL.
- EXISTING CLOCK AND SPEAKER ON THIS WALL TO REMAIN.
- RELOCATE EXISTING HORN/STROBE UNIT AND RECONNECT.
- CONNECT TO EXISTING SPARE OR NEW 20A, 1 POLE CIRCUIT BREAKER IN PANEL 'BPA'.
- CONNECT TO NEW 15A, 1 POLE CIRCUIT BREAKER IN PANEL 'BPA'. FIELD VERIFY MOTOR SIZE WITH OWNER.
- CONNECT TO NEW AUTOMATIC DOOR OPERATORS. COORDINATE WITH OTHERS.
- EXISTING POWER AND SIGNAL TO REMAIN.



2 LIGHTING PLAN - REMODEL

SCALE: 1/8" = 1'-0"

LEGEND			
	EMERGENCY FIXTURE - FLUORESCENT		DUPLEX RECEPTACLE
	FLUORESCENT FIXTURE - RECESS MTD		TELEPHONE OUTLET
	FLUORESCENT FIXTURE - SURFACE MTD		JUNCTION BOX
	MOTOR (SIZED AS NOTED)		CLOCK
	FRACTIONAL HORSEPOWER MOTOR STARTER		FIRE ALARM HORN AND STROBE LIGHT
	SINGLE POLE SWITCH		DENOTES EXISTING ITEM
	CONDUIT, CONCEALED		DENOTES EMERGENCY POWER
	HOMERUN TO PANEL (PANEL AND CIRCUIT NO.)		SURFACE RACEWAY
	PANEL		NOTE TAG (NO. INDICATES NOTE)

On Motion Sensors for Existing Lights.

Thursday, July 31, 1997 7:40 - e1

ISSUED FOR CONSTRUCTION

SHEET NO. E-1

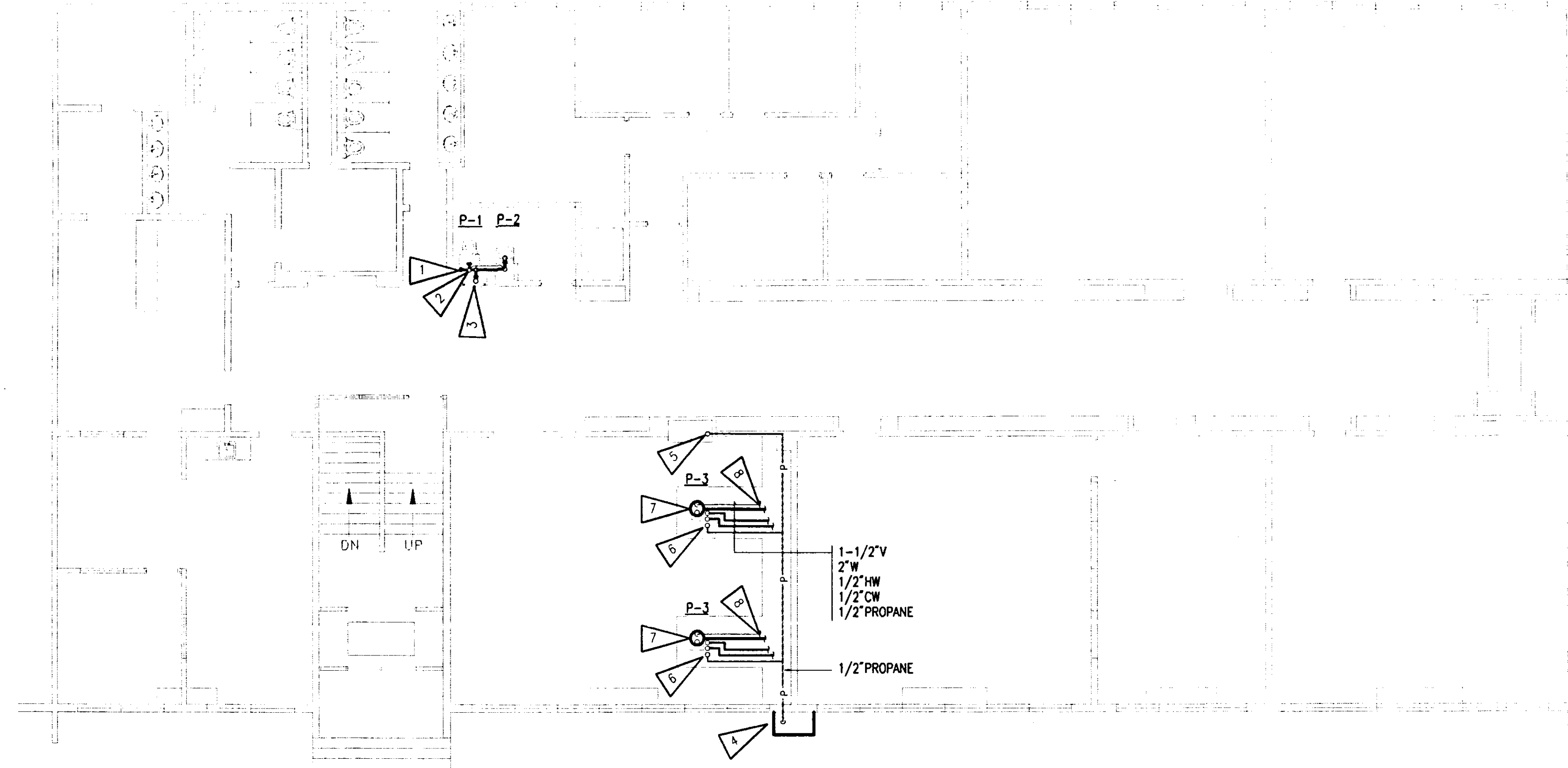
KACHEMAK BAY CAMPUS - REMODEL
ANCHORAGE, ALASKA
UNIVERSITY OF ALASKA ANCHORAGE

NOTES AND SPECIFICATIONS
POWER AND LIGHTING PLANS - REMODEL

RISA Engineering, Inc.
MECHANICAL AND ELECTRICAL CONSULTING ENGINEERS
2822 Arctic Boulevard, Suite 200
Anchorage, AK 99503-2516

McCOOL CARLSON GREEN
ARCHITECTURE INTERIOR DESIGN SPACE PLANNING
101 E. 5TH AVENUE, ANCHORAGE, AK (907) 463-6474

JOB NO. 97174.00
CHECKED: RPH
DESIGN: RPH
DRAWN: NJE
DATE: 07-31-97
REVISIONS: 1



1 PLUMBING PLAN - REMODEL
SCALE: 1/8" = 1'-0"

REMODEL NOTES

- ▶ PROVIDE NEW PIPING FOR NEW FIXTURES AS INDICATED, CONNECT NEW 3" WASTE PIPING TO EXISTING PIPING IN BOILER ROOM BELOW, CONNECT NEW 1/2" HW/CW TO EXISTING PIPING
- ▶ CONNECT NEW 2" VENT TO EXISTING 2" VENT.
- ▶ EXISTING DRINKING FOUNTAIN TO REMAIN, PROVIDE NEW COLD WATER SUPPLY CONNECTION AND DRAIN CONNECTION
- ▶ PROVIDE A LOCKING CABINET WITH VENTILATION GRILLES SUITABLE FOR PROPANE STORAGE. PROVIDE AND INSTALL TWO 20# PROPANE TANKS COMPLETE WITH MANIFOLD AND ISOLATION VALVES WITH VENTING TO ALLOW THE SYSTEM TO REMAIN IN SERVICE WHILE ONE OF THE BOTTLES IS FILLED AT A REMOTE LOCATION.
- ▶ CONNECT 1/2" GAS TO FUME HOOD GAS VALVE OR PROVIDE GAS VALVE AND INSTALL IN FUME HOOD, COORDINATE REQUIREMENT DIRECTLY WITH PROJECT MANAGER.
- ▶ INSTALL GAS TURRENT ON SCIENCE TABLE DECK AND CONNECT NEW 1/2" PROPANE.
- ▶ INSTALL NEW SCIENCE SINK P-3, ROUTE DRAIN THROUGH DILUTION TRAP PRIOR TO CONNECTING TO THE EXISTING DRAIN SYSTEM.
- ▶ EXTEND NEW PIPING TO UTILITY SPACE BELOW CABINETS AND CONNECT TO EXISTING PIPING, FIELD VERIFY SIZE AND GRADE OF EXISTING PIPING.

EQUIPMENT LIST:

- AHU-1 GAYLORD INDUSTRIES MINI CABINET FAN MODEL MCF-800A. UNIT CONSISTING OF INTERNALLY ISOLATED FAN SECTION, HEATING COIL SECTION, SLOPED FILTER SECTION AND SEPARATE MIXING BOX SECTION. 900 CFM AT 0.75" TSP. 1/3 HP. 120/160/18 COIL SHALL BE CAPABLE OF HEATING 900 CFM OF AIR FROM 55 DEGREES F MIXED AIR TEMPERATURE TO 85 DEGREES F DISCHARGE AIR TEMPERATURE USING 180 DEGREE F AVERAGE WATER TEMPERATURE, 3.3 GPM @ A 20 DEGREE F DIFFERENTIAL. AIR PRESSURE DROP SHALL NOT EXCEED 0.30" W.G. STATIC PRESSURE. PROVIDE FREEZE-STAT DOWNSTREAM OF HEATING COIL. SIDE ACCESS W/EXTENDED LUBRICATION LINES, MIXING DAMPERS TP INCLUDE SEALS.
- RH-1 PENN AIRETTE AIR INTAKE HOOD. 12/16 THROAT SIZE, 1.33 SQUARE FOOT FREE AREA. ALUMINUM CONSTRUCTION, MOUNTING ARRANGEMENT SUITABLE FOR A FIELD FABRICATED CURB INSTALLATION.
- BB-1 SLANT FIN MULTI/PAK 90 SLOPE TOP TWO-PIECE ENCLOSURE HYDRONIC FIN/TUBE MODEL 90-14 WITH C-340 ELEMENT, 3/4" TUBE, 4-1/4" SQUARE ALUMINUM FINS, 1269 BTU/LF AT 180 AW, 14" TALL ENCLOSURE. PROVIDE WITH DANFOSS RA 2000 RADIATOR VALVE WITH COMBINED REMOTE MOUNTED SENSOR AND DIAL W/6" CAPILLARY LENGTH.
- (A) SHOEMAKER 700 CB SERIES T-BAR. 4-WAY DIFFUSER WITH INDIVIDUALLY ADJUSTABLE CURVED BLADES, 12/12 FACE SIZE WITH 24/24 PANEL FOR T-BAR MOUNTING, PROVIDE WITH SQUARE TO ROUND NO LABOR COLLAR, ANTIQUE WHITE.
- (B) SHOEMAKER 900 SERIES DOUBLE DEFLECTION EXTRUDED ALUMINUM SUPPLY GRILLE. SURFACE MOUNT UNIT, ANTIQUE WHITE, SIZE PER PLANS.
- (C) SHOEMAKER 600 SERIES 1/2"x1/2"x1/2" ALUMINUM EGGRATE GRILLE. 90% FREE AREA, EXTRUDED ALUMINUM FRAME, SQUARE COLLAR, SURFACE MOUNT, ANTIQUE WHITE, SIZE PER PLANS.
- P-1 AMERICAN STANDARD CADET ADA ACCESSIBLE WATER CLOSET MODEL 2168.10. 17-1/4" RM HEIGHT ELONGATED BOWL, PRESSURE ASSISTED SIPHON JET FLUSH ACTION, VITREOUS CHINA CONSTRUCTION. PROVIDE WITH ELONGATED BOWL OPEN FRONT TOILET SEAT.
- P-2 AMERICAN STANDARD LUCERNE ADA ACCESSIBLE WALL MOUNTED LAVATORY MODEL Q335.012. WALL HANGAR SUPPORT, FRONT OVERFLOW, SELF DRAINING BACKSPASH, 4" CENTERSET FAUCET SPACING. PROVIDE DELTA ADA ACCESSIBLE FAUCET MODEL HDF - 501-WF, SINGLE HANDLE LAVATORY DECK FAUCET, CHROME FINISH.
- P-3 OWNER SUPPLIED SCIENCE SINK AND DECK MOUNTED LABORATORY FAUCET. PROVIDE ENFIELD DILUTION TRAP MODEL W611, ONE GALLON CAPACITY DILUTION TRAP WITH 1-1/2" INLET, 2" OUTLET AND 1-1/2" VENT.

SEQUENCE OF OPERATION:

AHU-1 THE AIR HANDLING UNIT SHALL BE CONTROLLED BY A HAND-OFF-AUTO SWITCH. IN THE HAND POSITION THE UNIT RUNS CONTINUOUSLY, IN THE OFF POSITION THE FAN IS OFF, IN THE AUTO POSITION THE FAN IS ON DURING OCCUPIED HOURS AND OFF DURING UNOCCUPIED HOURS. DURING OCCUPIED MODE, THE OUTSIDE AIR DAMPER SHALL OPEN TO MINIMUM POSITION TO PROVIDE VENTILATION TO THE SPACES (15%). ON CALL FOR HEATING A 2-WAY CONTROL VALVE SHALL MODULATE PROPORTIONALLY TO SATISFY THE SPACE MOUNTED TEMPERATURE SENSOR. ON CALL FOR COOLING THE OUTSIDE AIR AND RETURN AIR DAMPERS SHALL MODULATE IN SEQUENCE PROPORTIONALLY TO SATISFY A SPACE MOUNTED TEMPERATURE SENSOR. DAMPERS SHALL MODULATE UP TO 100% OUTSIDE AIR TO SATISFY THE SPACE TEMPERATURE. WHEN THE FAN IS OFF THE OUTSIDE AIR DAMPER SHALL CLOSE. ON FREEZE-STAT ALARM THE FAN SHALL STOP, OUTSIDE AIR DAMPER SHALL CLOSE AND THE COIL SHALL RUN WILD, PROVIDE AUTO RESET.

GENERAL NOTES:

PLANS - THE CONTRACTOR SHALL PROVIDE ALL MATERIALS AND LABOR NECESSARY FOR A COMPLETE AND OPERABLE SYSTEM. THE DRAWINGS ARE PARTLY DIAGRAMMATIC, NOT NECESSARILY SHOWING ALL OFFSETS OR EXACT LOCATIONS OF PIPING AND DUCTS UNLESS SPECIFICALLY DIMENSIONED.

PERMITS - THE CONTRACTOR SHALL SECURE AND PAY FOR ALL NECESSARY PERMITS AND FEES.

CODE - ALL WORK SHALL BE DONE IN ACCORDANCE WITH THE LATEST ADOPTED EDITION OF THE UNIFORM BUILDING CODE (UBC), UNIFORM MECHANICAL CODE (UMC) AND UNIFORM PLUMBING CODE (UPC). SHEETMETAL WORK SHALL BE DONE IN ACCORDANCE WITH SMACNA STANDARDS.

WARRANTY - ALL WORK PERFORMED UNDER THIS CONTRACT TO BE FREE FROM DEFECTS IN MATERIALS AND WORKMANSHIP FOR A PERIOD OF ONE YEAR FROM ACCEPTANCE. ANY FAULTY MATERIALS OR WORKMANSHIP SHALL BE REPAIRED OR REPLACED TO THE SATISFACTION OF THE OWNER DURING THE GUARANTEE PERIOD.

ELECTRICAL WORK - ALL ELECTRICAL WORK IS TO BE PERFORMED BY A LICENSED ELECTRICIAN.

SUBMITTALS - PROVIDE PRODUCT DATA SHEETS FOR MAJOR EQUIPMENT INSTALLED UNDER THIS CONTRACT.

EQUIPMENT SUBSTITUTIONS - ALL EQUIPMENT LISTED IS REPRESENTATIVE OF THE STANDARD OF QUALITY AND PERFORMANCE REQUIRED. OR EQUAL SUBSTITUTIONS WILL BE CONSIDERED IF THE SUBSTITUTES ARE SHOWN TO BE EQUAL OR BETTER QUALITY, INCLUDING EFFICIENCY OF PERFORMANCE, SIZE AND WEIGHT.

MATERIALS - ALL MATERIALS SHALL BE NEW AND UNUSED, INSTALLED IN ACCORDANCE WITH THE MANUFACTURER'S DIRECTIONS AND IN THE BEST PRACTICE OF THE CRAFT. OBTAIN OWNER'S APPROVAL OF ALL PRODUCTS PRIOR TO ORDERING OR INSTALLING ANY PART OF ANY SYSTEM.

INSULATION - PROVIDE 1" FIBERGLASS INSULATION WITH A COMPLETE FACTORY APPLIED VAPOR BARRIER JACKET ON ALL OUTSIDE AIR AND EXHAUST AIR DUCTWORK. PROVIDE 1" FIBERGLASS INSULATION WITH A COMPLETE FACTORY APPLIED VAPOR BARRIER ON HOT WATER, COLD WATER AND HEATING WATER PIPING. PROVIDE ACCESSORY COVERS FOR ALL FITTINGS.

ISOLATION VALVES - PROVIDE BALL TYPE ISOLATION VALVES FOR ALL PLUMBING AND HEATING EQUIPMENT.

PIPING - HEATING PIPING TO BE COPPER TYPE L. WATER PIPING TO BE COPPER TYPE L. USE 95/5 OR LEAD-FREE SOLDER. PROPANE PIPING SHALL BE SCHEDULE 40 BLACK, WITH THREADED FITTINGS. ROUTE PIPES PARALLEL WITH BUILDING LINES AND CONCEAL IN FINISHED AREAS UNLESS AUTHORIZED BY OWNER.

PIPING SUPPORTS - HANGERS, SUPPORTS, HANGER RODS AND INSERTS SHALL BE COPPER, GALVANIZED OR STAINLESS STEEL (SAME MATERIAL AS PIPES). INSULATION SHIELDS SHALL BE GALVANIZED OR STAINLESS STEEL. INSULATION SHALL PASS THROUGH HANGERS. SEISMIC RESTRAINT ON ALL PIPING SYSTEMS IN ACCORDANCE WITH SMACNA SEISMIC RESTRAINT MANUAL - GUIDELINES FOR MECHANICAL SYSTEMS. SEAL PENETRATIONS BETWEEN APARTMENTS W/UL LISTED FIRE RATED SEALANT.

TEST AND START-UP - TEST ALL PIPING SYSTEMS WITH 60 PSIG FOR ONE HOUR BEFORE FILLING AND IN ACCORDANCE WITH THE UNIFORM PLUMBING CODE. FILL ALL HEATING PIPING WITH TRISODIUM PHOSPHATE SOLUTION AND OPERATE FOR SEVERAL HOURS AT TEMPERATURE BEFORE FLUSHING AND FILLING WITH WATER.

IDENTIFICATION - PROVIDE IDENTIFICATION TAGS FOR ALL MECHANICAL EQUIPMENT INSTALLED UNDER THIS CONTRACT. PROVIDE STENCIL IDENTIFICATION OF ALL PIPING SHOWING DIRECTION OF FLOW AND FLUID CARRIED, MARKINGS SHALL BE AT 20' MAXIMUM INTERVALS WITH I.D. IN EACH ROOM.

DUCTWORK - PROVIDE GALVANIZED SHEETMETAL RECTANGULAR OR ROUND DUCT WHERE CALLED OUT ON THE PLANS. SEAL ALL DUCT SEAMS AND JOINTS AIRTIGHT. USE TURNING VANES IN ALL SQUARE ELBOWS. ALL SHEET METAL WORK TO BE CONSTRUCTED, INSTALLED, TESTED AND BALANCED IN ACCORDANCE WITH SMACNA STANDARDS.

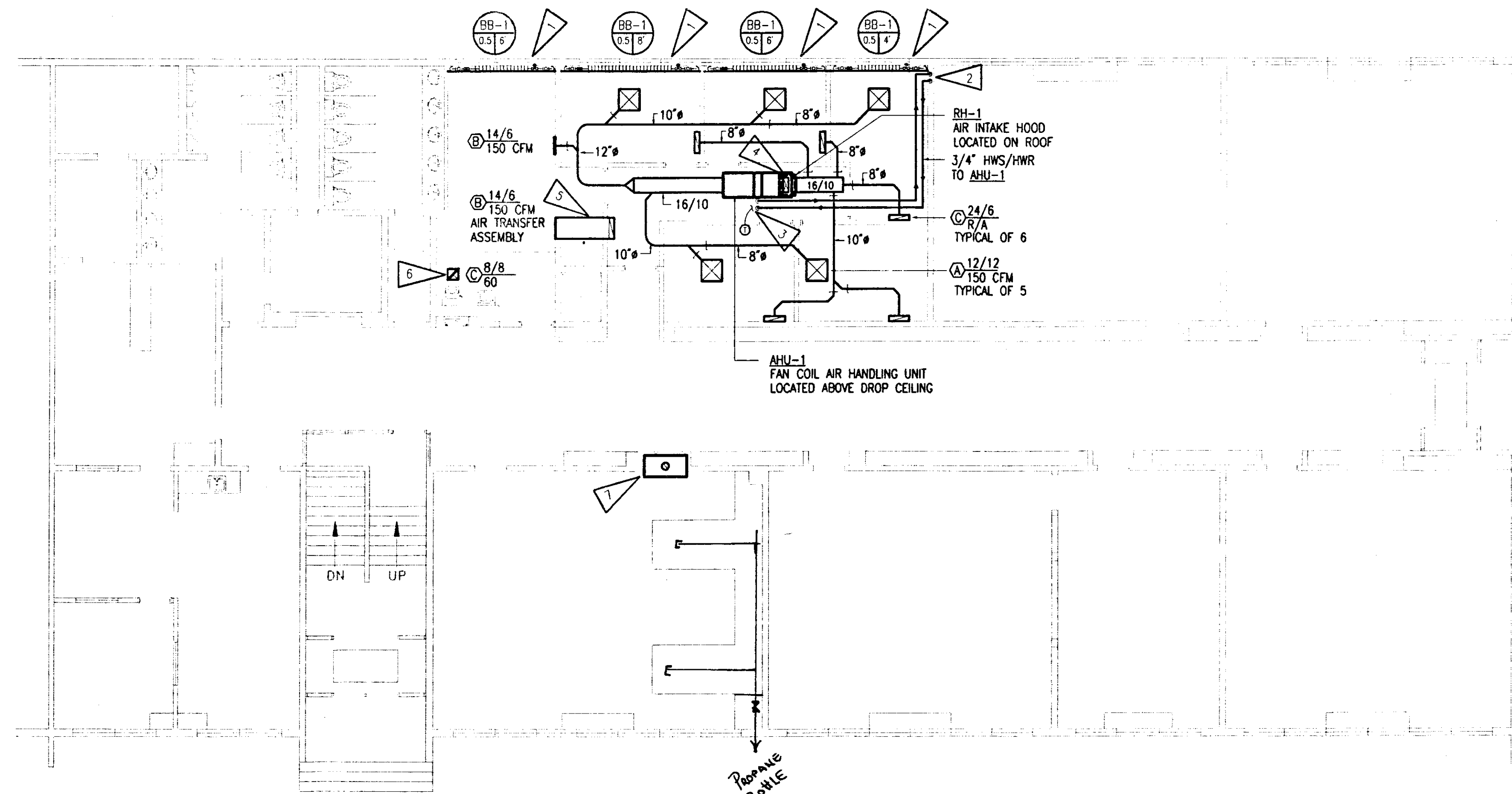
ACCESS - PROVIDE WORKABLE ACCESS TO ALL SERVICEABLE AND/OR OPERABLE EQUIPMENT.

BALANCE - THE CONTRACTOR SHALL BALANCE THE AIR SYSTEM TO THE SATISFACTION OF THE OWNER.

OPERATION AND MAINTENANCE MANUAL - PROVIDE THE OWNER WITH AN OPERATING AND MAINTENANCE MANUAL. TO INCLUDE MANUFACTURER'S SPECIFICATIONS, OPERATING AND MAINTENANCE INSTRUCTIONS, WARRANTY INFORMATION ON EACH PIECE OF EQUIPMENT AS WELL AS A SOURCE OF SUPPLY FOR SPARE PARTS AND SERVICE.

REMODEL NOTES

- ▶ INSTALL NEW HYDRONIC BASEBOARD HEAT BB-1 AS INDICATED. CONNECT NEW 3/4" HWS/HWR TO EXISTING PIPING MAINS LOCATED IN UTILITY TUNNEL BELOW FLOOR. PROVIDE AND INSTALL ISOLATION VALVES, BALANCE VALVE AND A WIRELESS THERMOSTATIC ZONE VALVE ON EACH SECTION OF HEAT.
- ▶ ROUTE NEW 3/4" HWS/HWR TO ABOVE CEILING, EXTEND PIPING TO THE LOCATION OF AHU-1. PROVIDE ISOLATION VALVES, AIR VENT, BALANCE VALVE AND 2-WAY MODULATING CONTROL VALVE AT THE HEATING COIL.
- ▶ INSTALL AHU-1 ABOVE NEW DROP CEILING IN CORRIDOR, COORDINATE FINAL LOCATION WITH EXISTING STRUCTURE, MAINTAIN ACCESS FOR FILTER CHANGE, AND FAN MAINTENANCE, SOUNDLINE THE RETURN AIR PLENUM AND 5' OF THE SUPPLY AIR DUCTWORK.
- ▶ TRANSITION 6/16 DUCT TO 12/16 AND EXTEND UP THROUGH ROOF TO NEW ROOF HOOD RH-1, INSTALL ROOF HOOD ON FIELD FABRICATED, 14" TALL, INSULATED ROOF CURB. PROVIDE INSULATION ON ALL OUTSIDE AIR DUCTWORK.
- ▶ AIR TRANSFER ASSEMBLY TO INCLUDE A SIDEWALL GRILLE (S) SOUNDLINED DUCTWORK AND AN EGGRATE GRILLE (E) IN THE ADJACENT SPACE.
- ▶ CONNECT NEW EXHAUST GRILLE TO EXISTING CENTRAL EXHAUST AIR THAT PREVIOUSLY SERVED THE DEMOLISHED BATHROOM.
- ▶ INSTALL OWNER SUPPLIED SCIENCE FUME HOOD. REMOVE EXISTING ROOF MOUNTED EXHAUST FAN AND EXTEND EXHAUST AIR DUCT FROM NEW FUME HOOD WITH INTEGRAL EXHAUST FAN UP THRU ROOF 6" MINIMUM ABOVE THE ROOF SURFACE TO AN UPBLAST DISCHARGE. PROVIDE A RAIN CAP SUITABLE FOR VERTICAL DISCHARGE. EXHAUST DUCTWORK SHALL BE STAINLESS STEEL CONSTRUCTION AND SHALL BE SEALED SUITABLE FOR POSITIVE PRESSURE EXHAUST. PROVIDE GUY WIRES FOR THE STACK AS REQUIRED.



2 VENTILATION PLAN - REMODEL
SCALE: 1/8" = 1'-0"

SYMBOL LEGEND

---XXX---	MEDIA CARRIED	(S)	DETAIL NUMBER
---	COLD WATER	(M2)	SHEET LOCATED ON
---	HOT WATER	(S)	SYMBOL
(O)	BALL/BUTTERFLY VALVE	(6\"/>	
(X)	2-WAY CONTROL VALVE	(7-1)	DESIGNATOR
(S)	ROUND DUCT UP & DOWN	(12\"/>	
(T)	THERMOSTAT OR SENSOR	(12\"/>	

7/14/10-101
RANC

ISSUED FOR CONSTRUCTION

KACHEMAK BAY CAMPUS - REMODEL
HOMER, ALASKA
UNIVERSITY OF ALASKA ANCHORAGE

MECHANICAL AND ELECTRICAL CONSULTING ENGINEERS

Engineering, Inc.
2322 Arctic Boulevard, Suite 200
Anchorage, AK 99503-2116

PROJECT NO. 971174
CHECKED: WNH
DESIGN: MWB
DATE: 07-31-97
REVISIONS: -

MCCOOL CARLSON GREEN
ARCHITECTURE INTERIOR DESIGN PLANNING
801 N. STRE ARLETTE ANCHORAGE, AK (907) 464-4474

SHEET NO. **M-1**