

**BUILDING INFORMATION**

TOTAL BUILDING SF: 13,050 SF  
 4,350 SF FIRST FLOOR  
 4,350 SF SECOND FLOOR  
 4,350 SF THIRD FLOOR

**EMPLOYEE ROOMS**

**FIRST FLOOR ROOM QUANTITIES: 8 ROOMS**  
 8 SINGLE OCCUPANCY ROOMS  
 0 DOUBLE OCCUPANCY ROOMS

**SECOND FLOOR ROOM QUANTITIES: 38 ROOMS**  
 0 SINGLE OCCUPANCY ROOMS  
 17 DOUBLE OCCUPANCY ROOMS

**TOTAL ROOM QUANTITY: 25 ROOMS**  
 8 SINGLE OCCUPANCY ROOMS  
 17 DOUBLE OCCUPANCY ROOMS

REVISIONS	
No.	Description

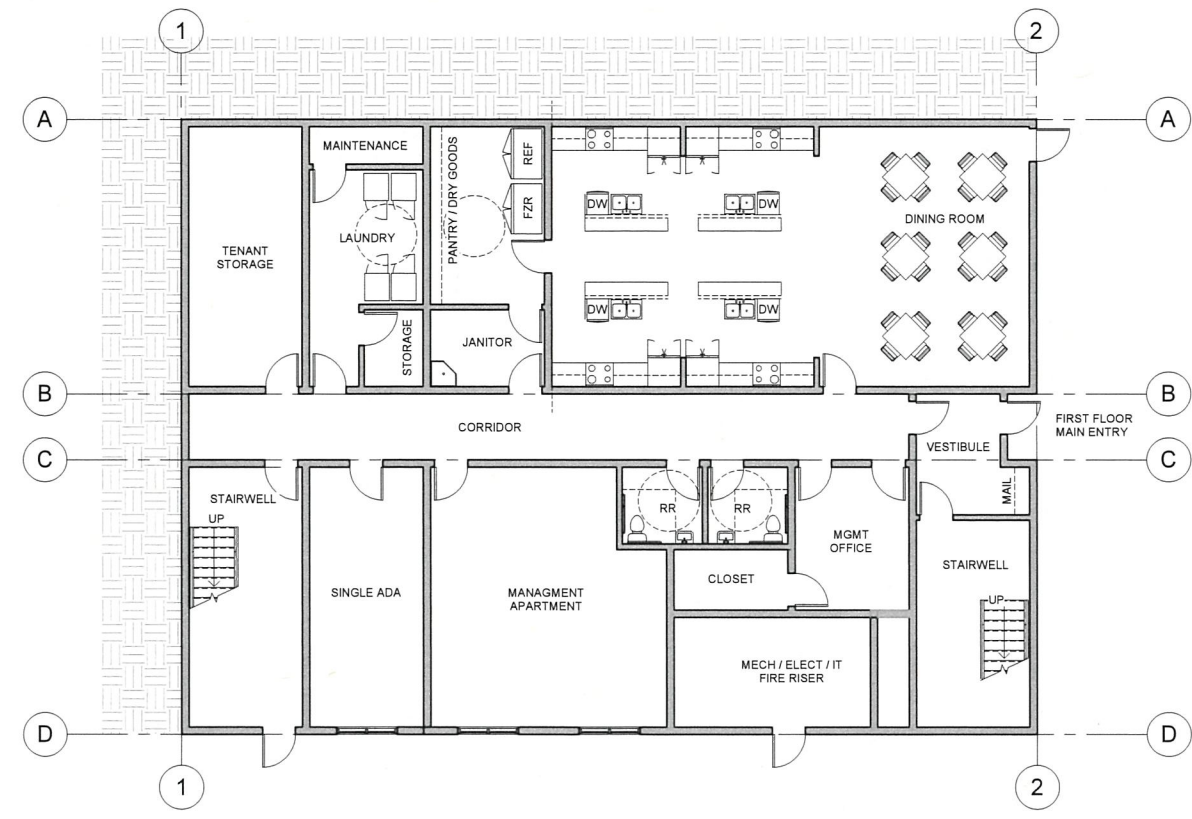


**WOMER & ASSOCIATES**  
 ARCHITECTURE ENGINEERING PLANNING  
 Suite 600 - 221 N. Wall St., Spokane, Washington 99201  
 TEL: (509) 534-4684 FAX: (509) 534-4643 www.womer.com

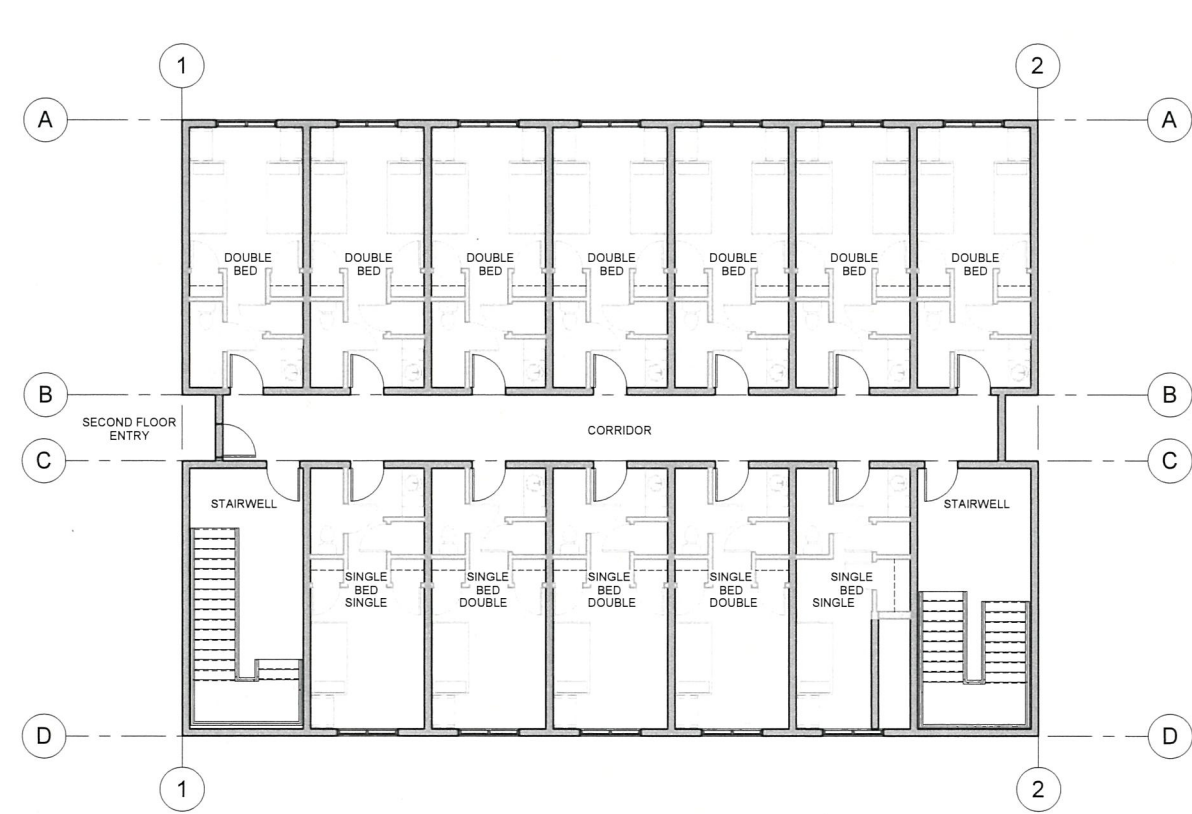
LIGHTHOUSE VILLAGE DEVELOPMENT  
 DOYON, LIMITED  
 1563 & 1663 HOMER SPIT ROAD, HOMER, AK  
 EMPLOYEE HOUSING - FLOOR PLANS

Job No: 876-001
Date: 11/15/2023
Designed: LRE
Drawn: LRE
Checked: LRE

**A2.01**



**1 || FIRST FLOOR**  
 A2.01 SCALE: 1/8" = 1'-0" REF: A2.11



**2 || SECOND FLOOR**  
 A2.01 SCALE: 1/8" = 1'-0" REF: A2.11



**3 || THIRD FLOOR**  
 A2.01 SCALE: 1/8" = 1'-0" REF: A2.11

**GENERAL NOTES**

1 EXTERIOR ELEVATIONS ARE SCHEMATIC FOR PREDESIGN LEVEL PURPOSES ONLY

REVISIONS	
No.	Description



**WOMER & ASSOCIATES**  
 ARCHITECTURE ENGINEERING PLANNING  
 Suite 600 - 221 N. Wall St., Spokane, Washington 99201  
 TEL: (509) 534-4864 FAX: (509) 534-4943 www.womer.com

LIGHTHOUSE VILLAGE DEVELOPMENT  
 DOYON, LIMITED  
 1563 & 1663 HOMER SPIT ROAD, HOMER, AK  
 EMPLOYEE HOUSING - EXTERIOR ELEVATIONS & 3D MASSING VIEWS

Job No. 876-001
Date: 11.15.2023
Designed LRE
Drawn LRE
Checked LRE

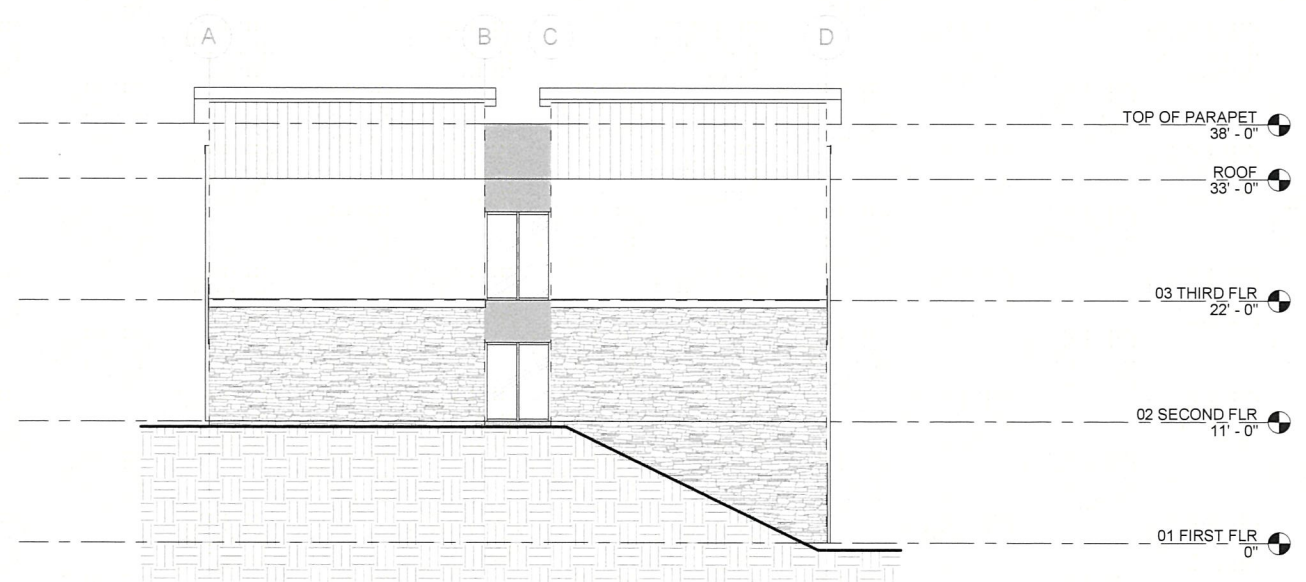
**A2.11**



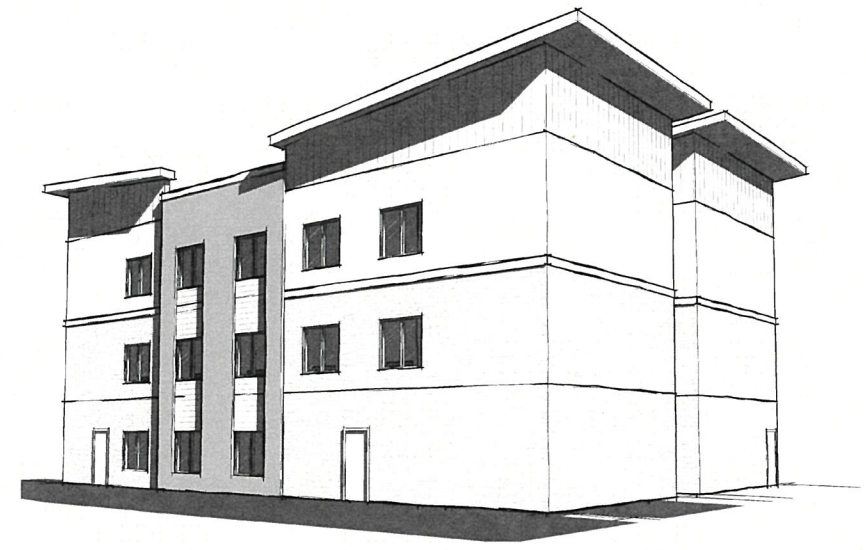
**1 || NORTH ELEVATION**  
 A2.11 SCALE: 1/8" = 1'-0"



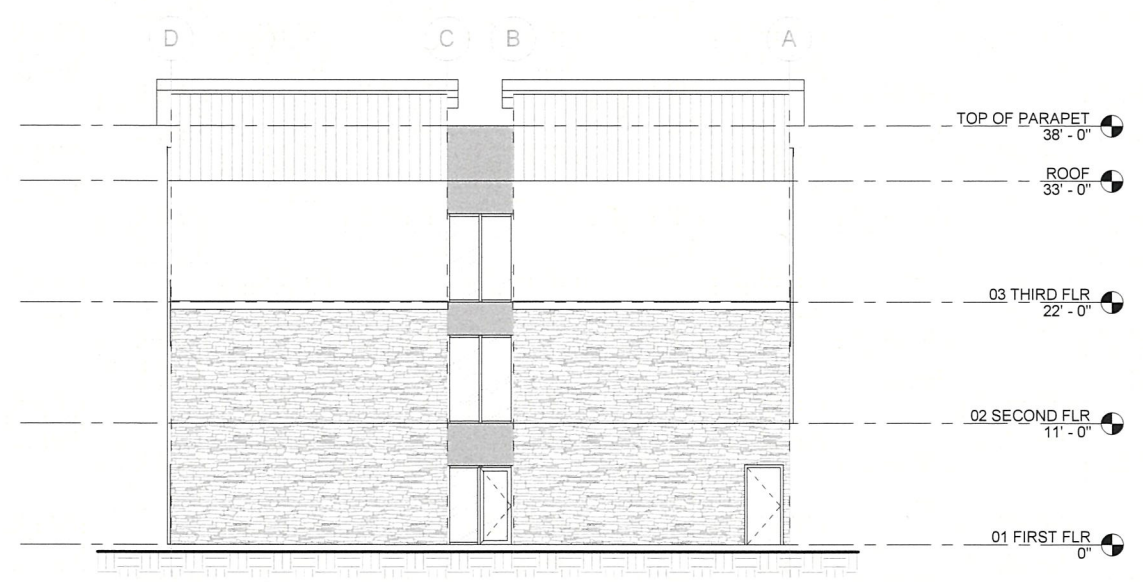
**2 || SOUTH ELEVATION**  
 A2.11 SCALE: 1/8" = 1'-0"



**3 || WEST ELEVATION**  
 A2.11 SCALE: 1/8" = 1'-0"



**5 || 3D View 1**  
 A2.11 SCALE:



**4 || EAST ELEVATION**  
 A2.11 SCALE: 1/8" = 1'-0"

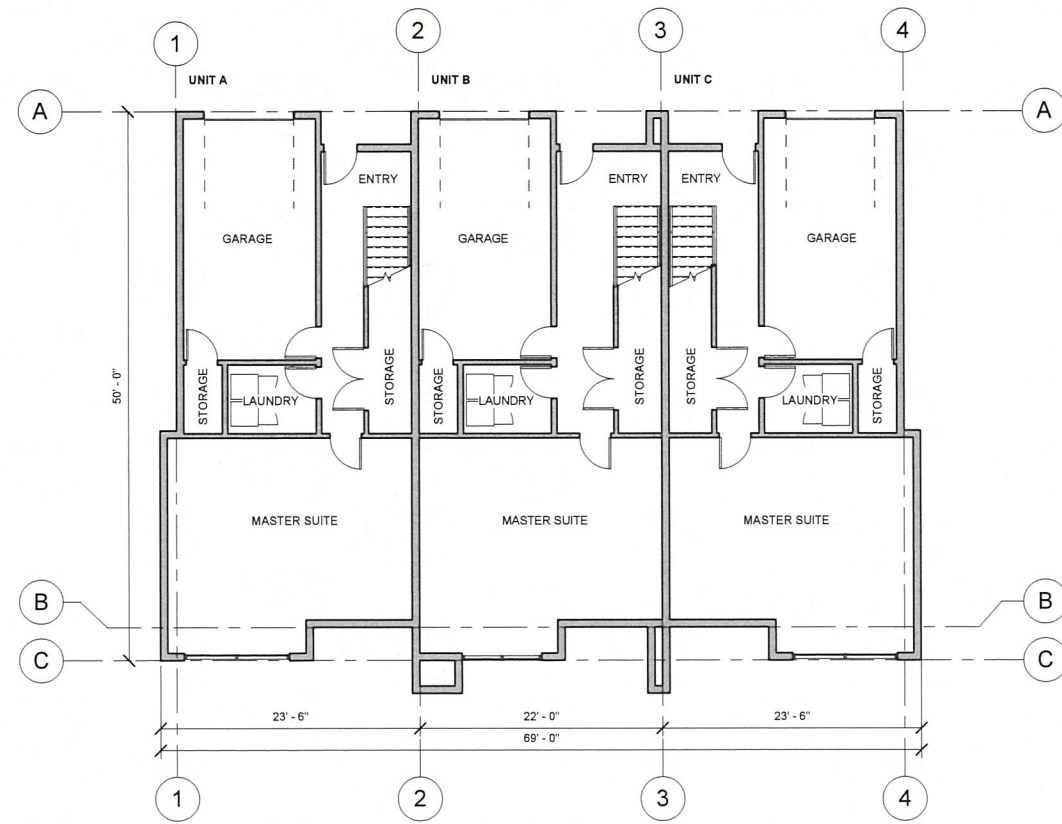
**BUILDING INFORMATION**

<b>TOTAL BUILDING SF: 6,464 SF</b>	
3,232 SF	FIRST FLOOR
3,232 SF	SECOND FLOOR
<b>UNIT A:</b>	2 STORIES 1,212 SF
	2 BEDROOM
	2 BATHROOM
	SINGLE CAR GARAGE
<b>UNIT B: 2 STORIES 1,196 SF</b>	
	2 BEDROOM
	2 BATHROOM
	SINGLE CAR GARAGE
<b>UNIT C: 2 STORIES 1,222 SF</b>	
	2 BEDROOM
	2 BATHROOM
	SINGLE CAR GARAGE

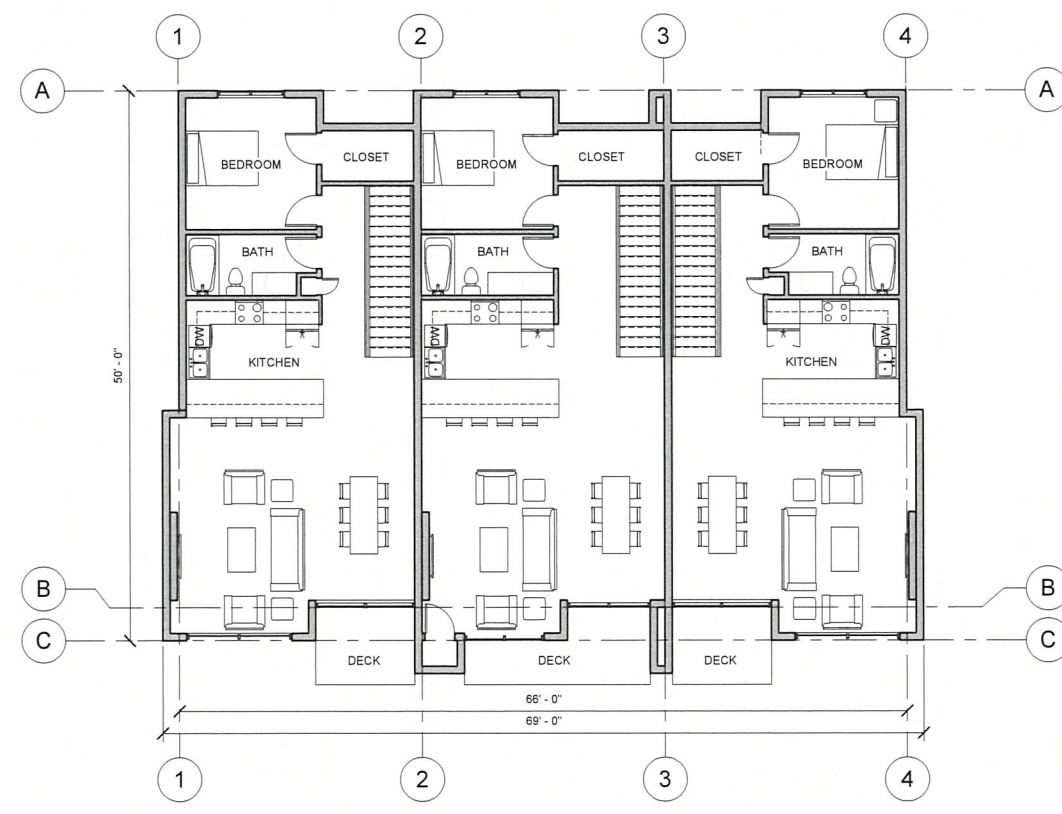
REVISIONS	
No.	Description



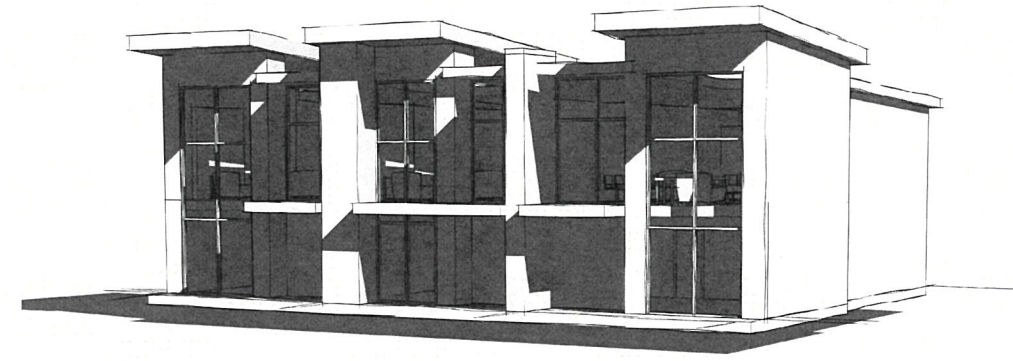
**WOMER & ASSOCIATES**  
 ARCHITECTURE ENGINEERING PLANNING  
 Suite 600 - 221 N. Wall St., Spokane, Washington 99201  
 TEL: (509) 534-4884 FAX: (509) 534-4943 www.womer.com



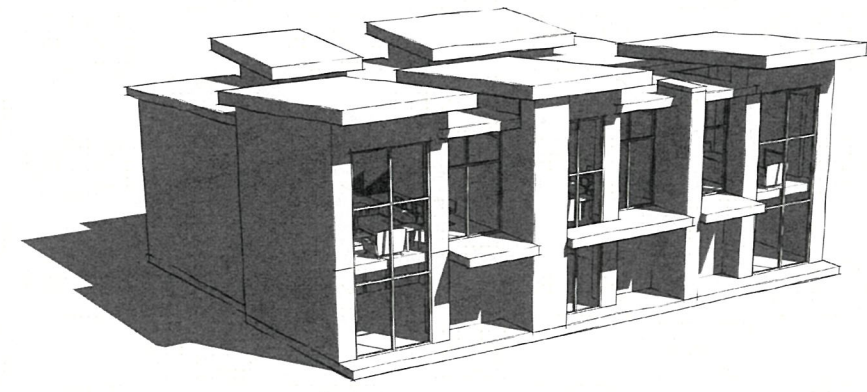
**1 || FIRST FLOOR**  
 A3.01 SCALE: 1/8" = 1'-0"



**2 || SECOND FLOOR**  
 A3.01 SCALE: 1/8" = 1'-0"



**3 || 3D VIEW 1**  
 A3.01 SCALE:



**4 || 3D VIEW 2**  
 A3.01 SCALE:

LIGHTHOUSE VILLAGE DEVELOPMENT  
 DOYON, LIMITED  
 1563 & 1663 HOMER SPIT ROAD, HOMER, AK  
 TRIPLEX CONDO - FLOOR PLANS AND 3D MASSING VIEWS

Job No. 876-001
Date: 11.15.2023
Designed LRE
Drawn LRE
Checked LRE

**A3.01**

**BUILDING INFORMATION**

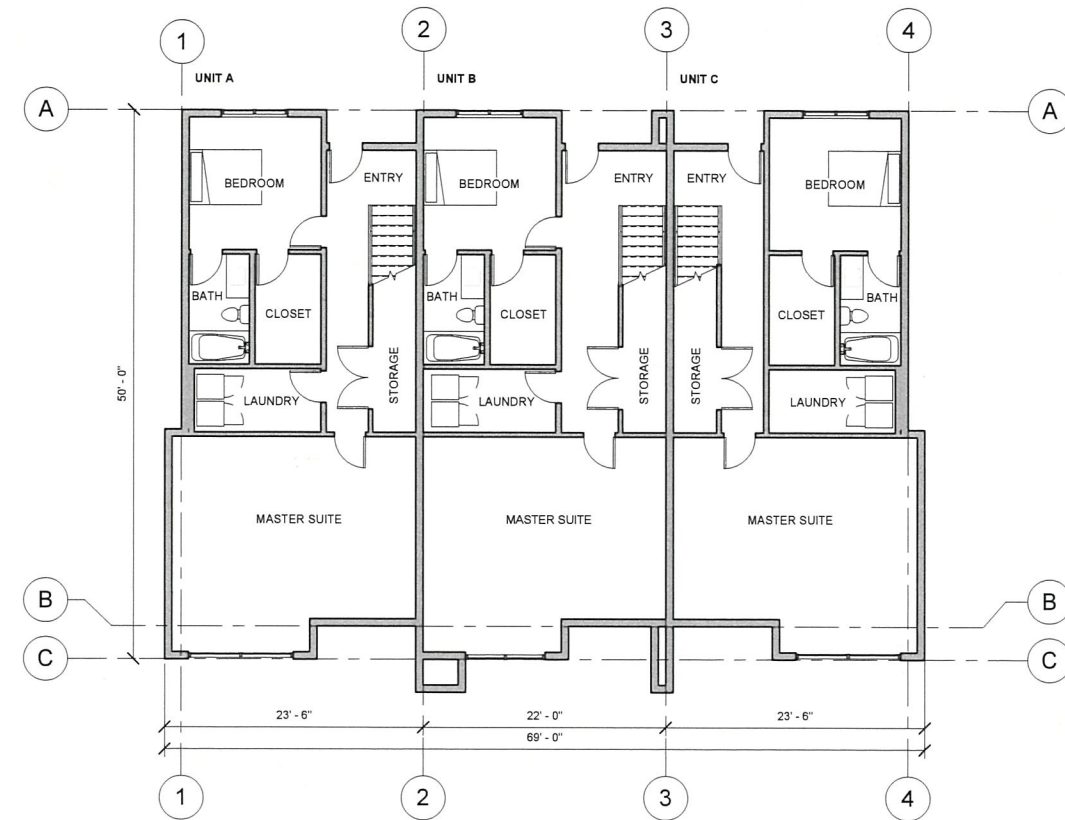
TOTAL BUILDING SF: 6,464 SF

3,232 SF	FIRST FLOOR
3,232 SF	SECOND FLOOR
<b>UNIT A:</b>	2 STORIES 1,212 SF 3 BEDROOM 3 BATHROOM
<b>UNIT B:</b>	2 STORIES 1,219 SF 3 BEDROOM 3 BATHROOM
<b>UNIT C:</b>	2 STORIES 1,212 SF 3 BEDROOM 3 BATHROOM

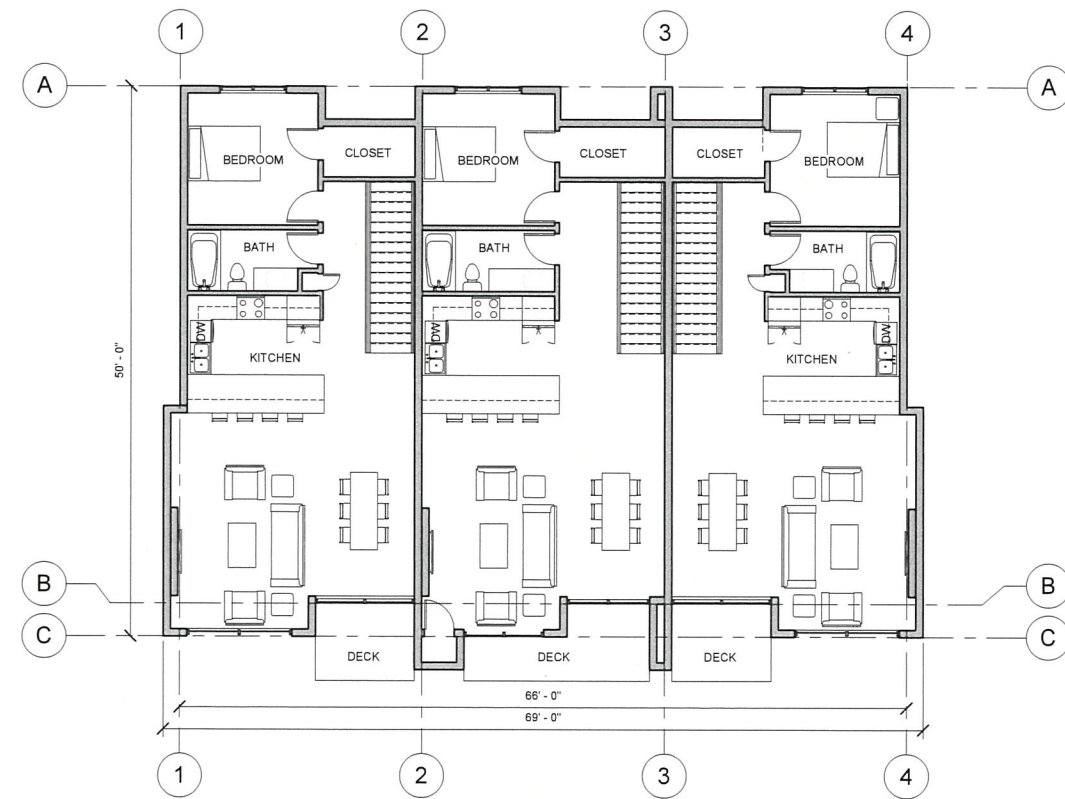
REVISIONS	
No.	Description



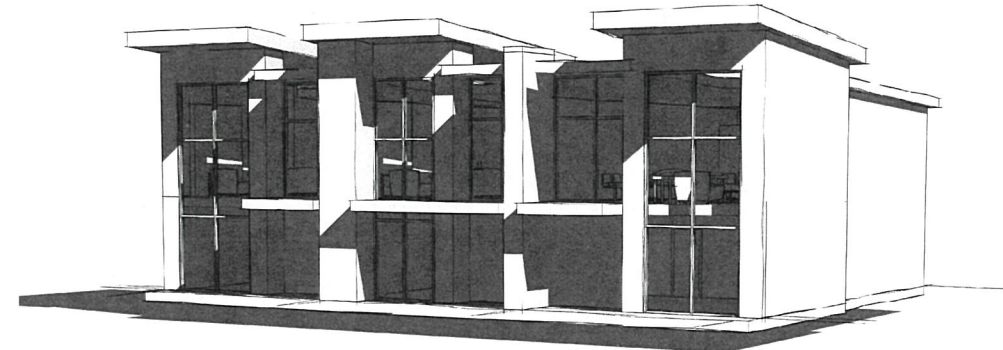
**WOMER & ASSOCIATES**  
 ARCHITECTURE ENGINEERING PLANNING  
 Suite 600, 221 N. Mall St., Spokane, Washington 99201  
 TEL: (509) 534-4884 FAX: (509) 534-4943 www.womer.com



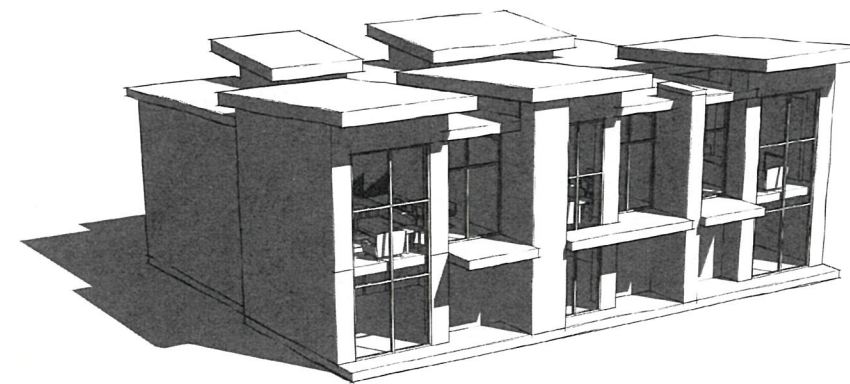
**1 || FIRST FLOOR**  
 A3.02 SCALE: 1/8" = 1'-0"



**2 || SECOND FLOOR**  
 A3.02 SCALE: 1/8" = 1'-0"



**3 || 3D VIEW 1**  
 A3.02 SCALE:



**4 || 3D VIEW 2**  
 A3.02 SCALE:

LIGHTHOUSE VILLAGE DEVELOPMENT  
 DOYON, LIMITED  
 1563 & 1663 HOMER SPIT ROAD, HOMER, AK  
 TRIPLEX SHORT STAY UNITS - FLOOR PLANS AND 3D MASSING VIEWS

Job No	876-001
Date	11.15.2023
Designer	LRE
Drawn	LRE
Checked	LRE

**A3.02**