


PORT AND HARBOR ADVISORY COMMISSION Special Meeting



Homer, Alaska

ICICLE SEAFOODS

FREDDY'S MARINE
Ultimate Fishing Machines
www.freddysmarine.com

HOMER BOAT YARD
Boat Hoisting • Shop Space
Repairs • Painting • Mechanical
Shrink Wrap • Storage
907-255-7158
www.homerboatyard.com
2550 Kachemak Dr • Homer, AK 99603

NOMAR
Alaskan Made
Products
for the
Alaska Fisheries
www.nomarfish.com

HOMER MARINE TRADES ASSOCIATION
Choose Homer for Your Boat Work
55° 50' 02" N
155° 26' 34" W

DESPERATE MARINE LLC
Homer, Alaska
Marine Reproduction & Stepping Systems
Blue Sea Electrical • Violators • Walkout
Design
Parts
Service
Installation

Edgewater Marine Surveyors
Paul C. Freeman AMS 1999
Certified Vessel Inspection Consultant
Society of Accredited Marine Surveyors
Call: 907-255-1236
PO Box 2005
Homer, Alaska 99603
freeman@edgewater.com
Paul C. Freeman, 907-255-1236
Liz & Frances, 907-255-4585

BULLET PROOF NETS
Protecting Quality Fisheries & Wild Fish Harvest
Commercial Prawn Trawl
New Construction, Repairs & Design
Subsistence & Recreational Trawl
Custom Mesh Construction & Repairs
Port Monitoring & Towing
MARCO **ALASKA MARINE** **ALASKA**
Located in Homer, Alaska 99603 • 907-255-1236
907-255-1236

NORTHERN ENTERPRISES
BOAT YARD, INC.

Port & Harbor • www.cityofhomer-ak.gov/port
Marine Trades Association • www.homermarinetrades.com

Wednesday,
November 14, 2012
5:00 P.M.

City Hall Cowles Council Chambers
491 E. Pioneer Ave., Homer, AK 99603



**NOTICE OF MEETING
SPECIAL MEETING AGENDA**

- 1. CALL TO ORDER**
- 2. APPROVAL OF THE AGENDA**
- 3. PUBLIC COMMENT REGARDING ITEMS ON THE AGENDA**
- 4. RECONSIDERATION**
- 5. APPROVAL OF MINUTES**
 - A. October 24, 2012 Regular Meeting Minutes **Page 1**
- 6. VISITORS**
- 7. STAFF & COUNCIL REPORT/COMMITTEE REPORTS/ BOROUGH REPORTS**
 - A. Port and Harbor Director's Report for November 2012 **Page 5**
 - B. Alaska Clean Harbor Certification video by ABC/Fox News
- 8. PUBLIC HEARING**
- 9. PENDING BUSINESS**
- 10. NEW BUSINESS**
 - A. Discussion of October 24th Presentation and Proposal from PND **Page 7**
 - B. Approval of the 2013 Port and Harbor Meeting Schedule as out lined in the Draft Resolution **Page 15**
- 11. INFORMATIONAL ITEMS**
 - A. Monthly Statistical & Performance Report October 2012 **Page 19**
 - B. Weekly Crane and Ice Report **Page 21**
 - C. Deep Water Dock Report **Page 23**
 - D. Pioneer Dock Report & Ferry Landings Report **Page 27**
 - E. Water Usage Report **Page 29**
 - F. Council Meeting Attendance **Page 31**
 - G. Memorandum from Deputy City Clerk Re: Information Request from Commissioner Carroll Re: Icicle Seafood Lease with City of Homer **Page 33**
- 12. COMMENTS OF THE AUDIENCE**
- 13. COMMENTS OF THE CITY STAFF**
- 14. COMMENTS OF THE COUNCILMEMBER *(If one is assigned)***
- 15. COMMENTS OF THE CHAIR**
- 16. COMMENTS OF THE COMMISSION**
- 17. ADJOURNMENT/NEXT REGULAR MEETING IS SCHEDULED FOR WEDNESDAY, DECEMBER 19, 2012 at 5:00 p.m. in the City Hall Cowles Council Chambers located at 491 E. Pioneer Ave, Homer, Alaska.**

Session 12-10 a Regular Meeting of the Port and Harbor Advisory Commission was called to order by Chair Ulmer at 5:00 p.m. on October 24, 2012 at the City Hall Cowles Council Chambers located at 491 E. Pioneer Avenue, Homer, Alaska.

PRESENT: COMMISSIONER CARROLL, HARTLEY, HOWARD, STOCKBURGER, ULMER, ZIMMERMAN

ABSENT: WEDIN (excused)

STAFF: ACTING PORT AND HARBOR DIRECTOR GLIDDEN
DEPUTY CITY CLERK JACOBSEN

AGENDA APPROVAL

The agenda was amended to include a presentation by PND and approved as amended by consensus of the Commission.

PUBLIC COMMENTS REGARDING ITEMS ON THE AGENDA

None

RECONSIDERATION

There was no reconsideration scheduled.

APPROVAL OF MINUTES

A. September 26, 2012 Regular Meeting Minutes

The minutes were approved as presented by consensus of the Commission.

VISITORS

A. PND Presentation Re: Homer Small Boat Harbor Float Replacement

John Pickering, President of PND, gave an overview of the scope of work for the Small Boat Harbor Float Replacement project. The project scope includes replacement of aging floats, Headwalk A (ramp 2 to K float), J R and S floats, and J float utilities. Additive alternatives include R and S float water and a dry fire system. Mr. Pickering reviewed site plans for the floats. He explained that the design will be timber floats, steel support piles, and increased finger lengths and stall widths to meet modern vessel sizes. The project schedule is 35% design in October 2012, 65% design in December 2012, 95% design in January 2013. IFC design, bridge project, and bid award from February to April 2013, and construction in the fall of 2013. The group discussed the proposal and expressed concern about the loss of stalls.

B. Regina Mauras Finance Director

PORT AND HARBOR ADVISORY COMMISSION
REGULAR MEETING
OCTOBER 24, 2012

Finance Director Mauras reviewed the Port and Harbor Budget with the Commission. She addressed the budget requests over \$5,000 and pointed out what was denied and what is still included for consideration and also answered questions from the Commission.

STAFF AND COUNCIL REPORT/COMMITTEE REPORTS/BOROUGH REPORTS

A. Port and Harbor Director's Report for October 2012

Acting Port and Harbor Director Glidden answered questions regarding the surplus equipment sale, the status of the Endeavor and fees they are paying the City at this time, reviewed the staff report.

PUBLIC HEARING

PENDING BUSINESS

NEW BUSINESS

A. Memo from Deputy City Clerk Re: November Meeting Date

The Commission considered alternate meeting dates in November as they anticipate a lack of quorum due to attendance at the Seattle's Pacific Marine Expo.

ZIMMERMAN/STOCKBURGER MOVED TO CHANGE THE NOVEMBER 2012 MEETING DATE TO NOVEMBER 14TH.

There was brief discussion that they need to have some discussion about the information provided by PND.

VOTE: NON OBJECTION: UNANIMOUS CONSENT

Motion carried.

INFORMATIONAL ITEMS

- A. Monthly Statistical & Performance Report September 2012
- B. Weekly Crane and Ice Report
- C. Deep Water Dock Report
- D. Pioneer Dock Report & Ferry Landings Report
- E. Water Usage Report
- F. Memo to Port and Harbor Advisory Commission from Port and Harbor Director dated October 17, 2012 Re: Harbor Project Updates
- G. Lease Expirations updated
- H. Commissioner Attendance Schedule for City Council Meetings 2012

COMMENTS OF THE AUDIENCE

There were no audience comments.

PORT AND HARBOR ADVISORY COMMISSION
REGULAR MEETING
OCTOBER 24, 2012

COMMENTS OF CITY STAFF

Deputy City Clerk Jacobsen apologized for not being able to view the Alaska Clean Harbors report tonight, she reminded the group to watch it on Fox news Thursday at 9.

COMMENTS OF THE COUNCILMEMBER

None

COMMENTS OF THE CHAIR

None

COMMENTS OF THE COMMISSION

Commissioner Carroll commented that he has talked to Mr. Flannigan who has a lot of interesting ideas about the barge haul out concept. It would be nice to have him at a meeting, but he is just too busy right now. Maybe we can pick Bryan's brain about it at the next meeting. He also requested that he would like to have basic information provided for discussion regarding the Icicle lease, but not discussion about the lawsuit.

Commissioner Stockburger commented regarding the presentation from PND tonight. He expressed the importance of the group and staff giving feed back because the design of the facility shouldn't be left to people who don't use it. He said that is probably what happened with the load and launch ramp.

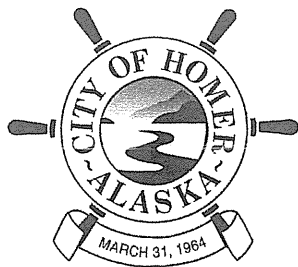
There were no other Commissioner comments.

ADJOURN

There being no further business to come before the Commission the meeting adjourned at 6:28 p.m. The next special meeting is scheduled for Wednesday, November 14, 2012 at 5:00 p.m. at the City Hall Cowles Council Chambers located at 491 E. Pioneer Avenue, Homer, Alaska.

MELISSA JACOBSEN, CMC, DEPUTY CITY CLERK

Approved: _____



City of Homer

Port / Harbor

4350 Homer Spit Road
Homer, Alaska 99603-8005

Telephone (907) 235-3160
Fax (907) 235-3152
E-mail Port@ci.homer.ak.us
Web Site <http://port.ci.homer.ak.us>

PORT & HARBOR STAFF REPORT

By Bryan Hawkins, Port Director/Harbormaster

November 7, 2012

Prepared for the November 14, 2012 Port & Harbor Commission Meeting

1. Administration

- Staff met with:

 - Department Staff Meeting

 - Tidal Generation Incubator Meeting – Rep. Paul Seaton's Office

 - Western Alaska Area Maritime Security Committee Meeting

- Deputy Harbormaster Matt Clarke and Port Director/Harbormaster Bryan Hawkins attended the AAHPA conference in Sitka October 22 – 26. There were many good presentations given, but the two most informational was one on concrete degradation by Tom Spencer of Moffat and Nichols, and the other was Harbor Master Plan (Sitka Model) by PND Engineer's Dick Somerville and Michael Fisher of Northern Economics. As normal with these events, a significant amount of information is learned from the networking opportunities between the vendors, attendees, and lecturers. The presentations themselves serve as a starting point to generate questions and conversations.
- Bryan also attended the CIRCAC meeting on Cook Inlet Risk Assessment in Anchorage October 30 – 31 as an advisory committee member representing the City of Homer. This meeting was focused on bringing the committee up to-date with the progress of the risk assessment study currently being done on the Cook Inlet. Their assignment was to set values to the potential spills that would occur in the seven scenarios that the committee identified over the past year and really focused on the details in the two days that they had.

2. Operations

Unseasonably cold weather has brought about an early demand for access to shore power electricity. There are approximately 65 vessels currently participating in the Winter Metered Power Program. Operation Staff has worked diligently to remove abandoned equipment and debris from the float system in preparation for snow removal. The Port and Harbor recently purchase a new snow sweeping device that is very effective in removing small layers of snow and exposing the deck surface of the float system. The end result prohibits the build-up of ice and snow and yields a safer walking surface that has been very popular with the harbor users.

- The oil rig endeavor and its support tugs, Elsbeth III and Pacific Explorer, continue to utilize the Deep Water Dock. Other dock landings included the Tug Vigilant, CISPRI Endeavor, Sampson Mariner, Mister Ed, and Barge Pam Tay.
- The small boat harbor and Deep Water Dock facilitated oil spill response drills conducted by CISPRI on October 24th and 25th. Approximately 15 commercial fishing vessels participated in the drills.
- Harbor Officers used the harbor tug and patrol skiff in tandem for following tow operations: a 60 foot steel commercial fishing vessel was towed from the fuel float to B float after its rudder failed; and a 110 foot landing craft was towed out of a raft of vessels on System 5 in order to allow for the emergency call-out of a dive/salvage vessel responding to the needs of an oil rig in upper Cook Inlet.
- On October 22nd, Harbor Officers responded to an EMS call for a deceased male in a pick-up truck located at the base of the Homer Spit.
- November 2nd, Operation Staff worked with Port Maintenance and Northstar Stevedoring to secure a broken timber fender on the north corner of the Deep Water Dock.

- Deputy Harbormaster Matt Clarke attended a Tsunami Operations Workshop hosted by the West Coast Alaska Tsunami Warning Center in Cordova from October 29 – November 1.

3. Ice Plant

The Ice Plant and Fish Dock crew have been working on getting the building and area winterized. This included repairing holes in the walls of the shop, replacing/installing three new heaters, and insulating around doors/windows. They've also painted the upstairs floor and have been busy with a few different electrical projects. The Ice Plant is tentatively schedule for closing for the season November 15th. Temporary Fish Dock Laborer Peter Alfiche will be finishing up his term this month. He's been a great worker and we hope to see him return next year.

4. Port Maintenance

October was busy for the Port Maintenance Shop. They finished up winterization tasks around the Port, including: fish cleaning tables, rest rooms, shut off water to the float systems, and installed plows and a sander on the trucks. They were heavily involved with the surplus sale; collecting, storing, and dispersing sale items. They participated in the Alaska Clean Harbors interview done by Alaska Fox New; and also collaborated with Parks/Recreation and the Homer High School welding program by providing them with 40 feet of 32" diameter pipe to be turned into fire rings. More will be provided to them over the winter. Temporary Maintenance Tech Cory Reynolds finished his 6 month position. He was a hard worker, and a good guy to have around. We wish him the best.

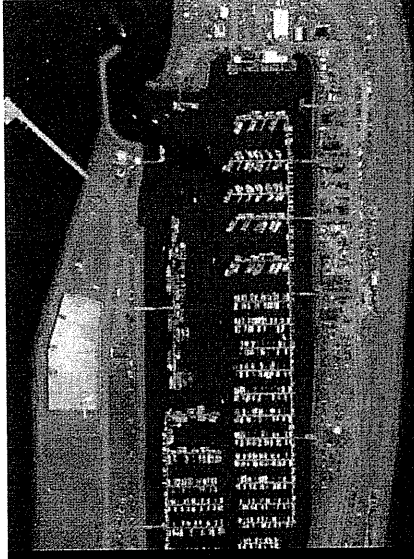


HOMER SMALL BOAT HARBOR FLOAT REPLACEMENT

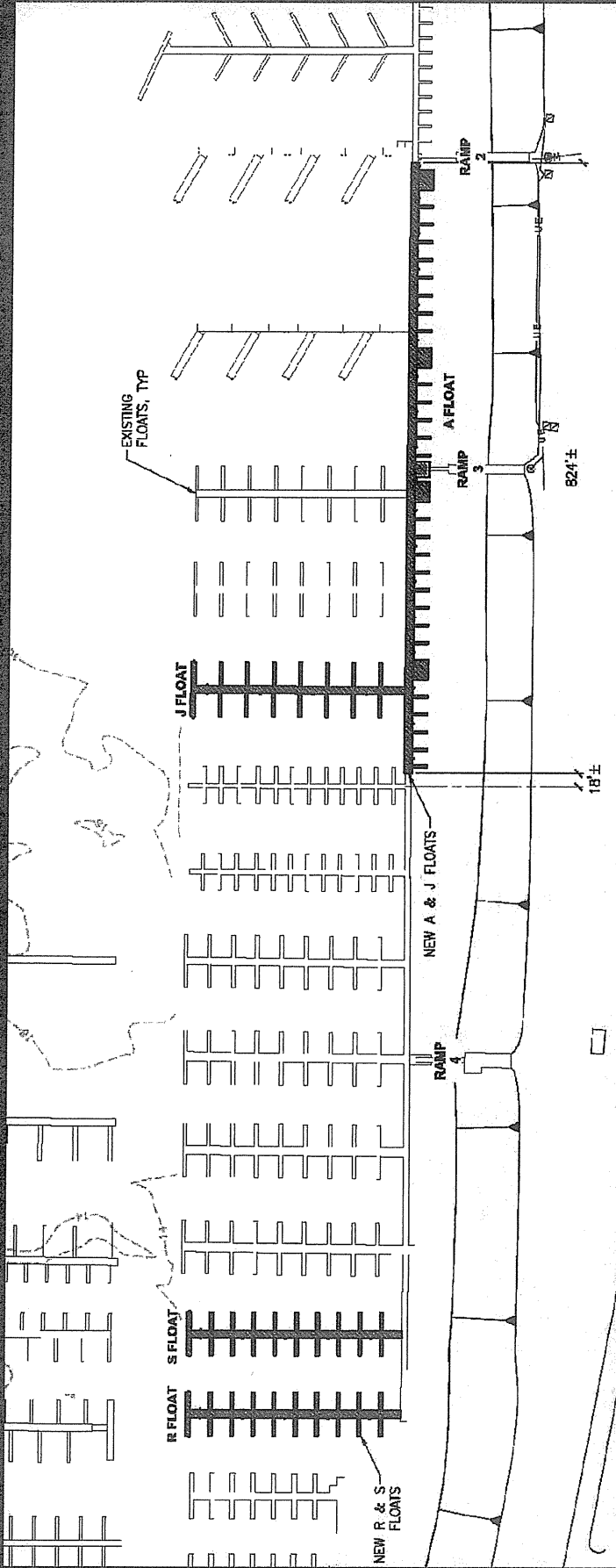
OCTOBER 24, 2012

Project Scope

- Replace Aging Floats
 - Headwalk A (Ramp 2 to K Float)
 - J Float
 - R Float
 - S Float
- J Float Utilities
- Additive Alternative Scope
 - R and S Float Water
 - Dry Fire System



Site Plan





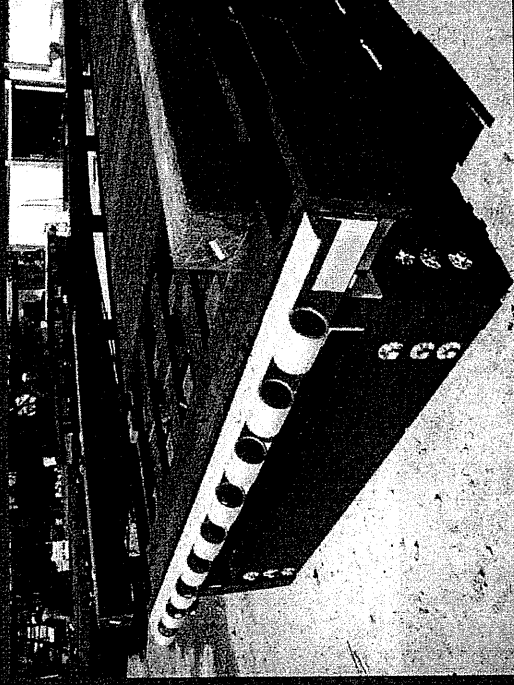
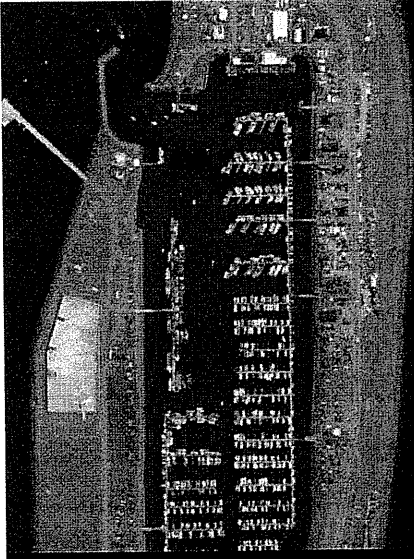
ENGINEERS, INC.

A black and white photograph of a printed circuit board (PCB) populated with numerous integrated circuits (ICs). The ICs are arranged in several rows, with some larger chips in the center and smaller ones towards the edges. The board has various traces and components visible.



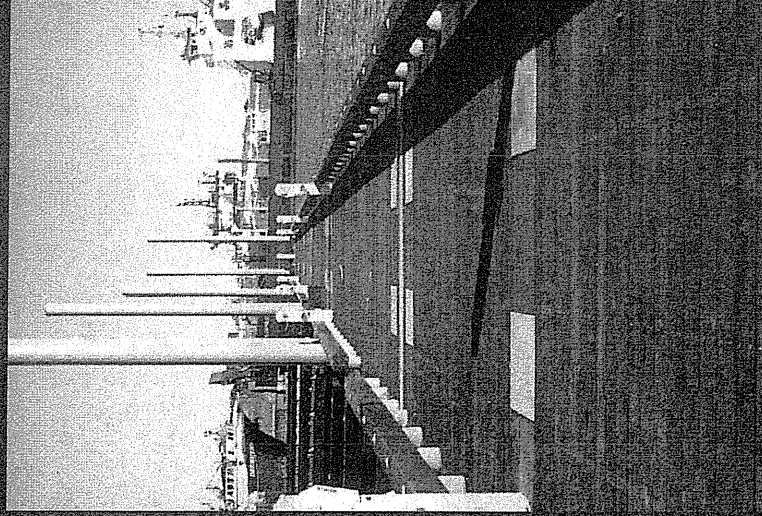
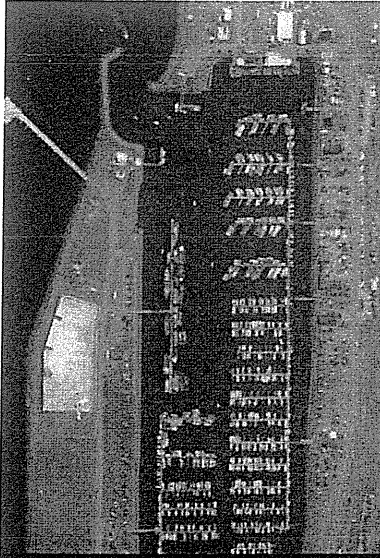
Design

- Timber floats
- Steel support piles
- Increased finger length and stall widths to meet modern vessel sizes

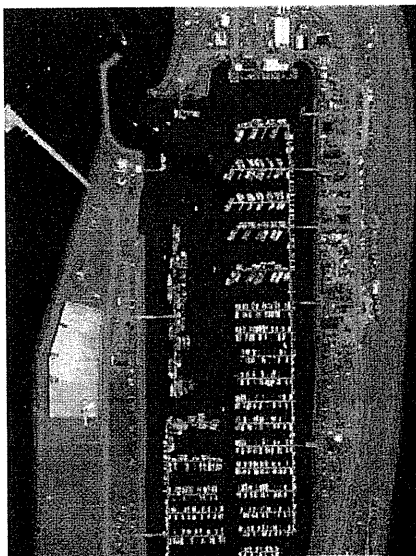


Project Schedule

- 35% Design – October 2012
- 65% Design – December 2012
- 95% Design – January 2013
- IFC Design – February 2013
- Bid Project – Feb-March 2013
- Bid Award – April 2013
- Construction Fall 2013



Questions



P | N | D
ENGINEERS, INC.

**CITY OF HOMER
HOMER, ALASKA**

City Clerk

DRAFT RESOLUTION 12-XX

A RESOLUTION OF THE CITY COUNCIL OF HOMER, ALASKA, ESTABLISHING THE 2013 REGULAR MEETING SCHEDULE FOR THE CITY COUNCIL, ECONOMIC DEVELOPMENT ADVISORY COMMISSION, LIBRARY ADVISORY BOARD, PARKS AND RECREATION ADVISORY COMMISSION, ADVISORY PLANNING COMMISSION, PORT AND HARBOR ADVISORY COMMISSION, LEASE COMMITTEE, PERMANENT FUND COMMITTEE, PUBLIC ARTS COMMITTEE AND TRANSPORTATION ADVISORY COMMITTEE.

WHEREAS, Pursuant to Homer City Code Section 1.14.020, the City Council annually sets the schedule for regular and some special meetings, noting the dates, times and places of the City Council, Advisory Commissions, and the Library Advisory Board meetings; and

WHEREAS, The public is informed of such meetings through the kiosks located at Captain's Coffee, Harbormaster's Office, Redden Marine Services of Homer, and the City Clerk's Office, Clerk's Calendar on KBBI, the City Clerk's Home Page on the Internet, and postings at the Clerk's Office at City Hall, and the Public Library; and

WHEREAS, HCC 1.14.020 - 040 states that meetings may be advertised in a local paper of general circulation at least three days before the date of the meeting and that special meetings should be advertised in the same manner or may be broadcast by local radio at least twice a day for three consecutive days or two consecutive days before the day of the meeting plus the day of the meeting; and

WHEREAS, HCC 1.14.010 notes that the notice of meetings applies to the City Council and all commissions, boards, committees, subcommittees, task forces and any sub-unit of the foregoing public bodies of the City, whether meeting in a formal or informal meeting; that the failure to give the notice provided for under this chapter does not invalidate or otherwise affect any action or decision of a public body of the City; however, this sentence does not change the consequences of failing to give the minimum notice required under State Statute; that notice will ordinarily be given by the City Clerk; and that the presiding officer or the person or persons calling a meeting are responsible for notifying the City Clerk of meetings in sufficient time for the Clerk to publish notice in a newspaper of general circulation in the City; and

WHEREAS, This Resolution does not preclude additional meetings such as emergency meetings, special meetings, worksessions, and the like; and

WHEREAS, Council adopted Resolution 06-144 on October 9, 2006 establishing the Regular Meeting site for all bodies to be the City Hall Cowles Council Chambers.

NOW, THEREFORE, BE IT RESOLVED by the Homer City Council, that the 2013 meeting schedule is established for the City Council, Economic Development Advisory Commission, Library Advisory Board, Parks and Recreation Advisory Commission, Advisory Planning Commission, Port and Harbor Advisory Commission, Lease Committee, Permanent Fund Committee, Public Arts Committee and Transportation Advisory Committee of the City of Homer, Alaska, as follows:

Holidays - City Offices closed:

January 1*, New Year's Day, Tuesday	February 18*, Presidents' Day, the third Monday	March 25*, Seward's Day, last Monday	May 27*, Memorial Day, last Monday	July 4*, Independence Day, Thursday	September 2*, Labor Day, first Monday
October 18*, Alaska Day, Friday	November 11*, Veterans Day, Monday	November 28*, Thanksgiving Day, Thursday	November 29*, Friday, the day after Thanksgiving	December 25*, Christmas, Wednesday	

*Indicates holidays - City offices closed.

**If on a Sunday, the following Monday is observed as the legal holiday; if on a Saturday, the preceding Friday is observed as the legal holiday pursuant to the City of Homer Personnel Rules and Regulations.

CITY COUNCIL (CC)

January 14, 28	February 11, 25	March 11, 26*	April 8, 22	May 13, 28*	June 10, 24
July 8***, 22	August 12, 26	September 9, 23	October 1 Election	October 14, 28, for Oath of Office, 21	Canvass Board October 4 or 7
November 5 Run- Off Election	November 12**, 25	December 9****	December 16***** if needed		

City Council's Regular Committee of the Whole Meetings at 5:00 p.m. to no later than 5:50 p.m. prior to every Regular Meeting which are held the second and fourth Monday of each month at 6:00 p.m. ***The City Council traditionally reschedules regular meetings that fall on holidays or High School Graduation days, for the following Tuesday. Council will not conduct a First Regular Meeting in July.

AML Annual Conference Week is tentatively scheduled for November 11 - 15, 2013.

*Tuesday meeting due to Seward's Day/Memorial Day/Veterans Day.

**There will be no First Regular Meeting in July or November.

**** The City Council traditionally cancels the last regular meeting in December and holds the first regular meeting and one to two Special Meetings as needed. Generally the second Special Meeting the third week of December, will not be held.

ECONOMIC DEVELOPMENT ADVISORY COMMISSION (EDC)

January 8	February 12	March 12	April 9	May 14	June 11
July 9	August 13	September 10	October 8	November 12	December 10

Economic Development Advisory Commission Regular Meetings are held on the second Tuesday of each Month at 6:00 p.m.

LIBRARY ADVISORY BOARD (LAB)

January 2*	February 5	March 5	April 2	May 7	June 4
July 2	August 6	September 3	October 1	November 5	December 3

Library Advisory Board Regular Meetings are held on the first Tuesday of each month at 5:00 p.m. *Wednesday meeting due to New Year's Day.

PARKS AND RECREATION ADVISORY COMMISSION (P/R)

January 17	February 21	March 21	April 18
May 16	June 20	July 18	August 15
September 19	October 17	November 21	

Parks and Recreation Advisory Commission Regular Meetings are held on the third Thursday of each month, with the exception of December, at 5:30 p.m.

PLANNING COMMISSION (P/C)

January 2, 16	February 6, 20	March 6, 20	April 3, 17	May 1, 15	June 5, 19
July 17**	August 7, 21	September 4, 18	October 2, 16	November 6**	December 4**

Advisory Planning Commission Regular Meetings are held on the first and third Wednesday of each month at 6:30 p.m. **There will be no First Regular Meeting in July or Second Regular Meetings in November and December.

PORT AND HARBOR ADVISORY COMMISSION (P/H)

January 23	February 27	March 27	April 24	May 22	June 26
July 24	August 28	September 25	October 23	November 20	December 18

Port and Harbor Advisory Commission Regular Meetings are held on the fourth Wednesday of each month at 5:00 p.m., with the exception of May, June, July and August meetings that are held at 6:00 p.m. The Regular Meetings in the months of November and December are traditionally scheduled for the third Wednesday of the month.

LEASE COMMITTEE (LC)

January 10	April 11	July 11	October 10
------------	----------	---------	------------

Lease Committee Regular Meetings are held quarterly on the second Thursday of each month at 3:00 p.m.

PERMANENT FUND COMMITTEE (PFC)

February 14	May 9	August 8	November 14
-------------	-------	----------	-------------

Permanent Fund Committee Regular Meetings are held quarterly on the second Thursday of the months of February, May, August, and November at 5:15 p.m.

PUBLIC ARTS COMMITTEE (PAC)

February 21	May 16	August 15	November 21
-------------	--------	-----------	-------------

Public Arts Committee Regular Meetings are held quarterly on the third Thursday of the months of February, May, August, and November at 5:00 p.m.

TRANSPORTATION ADVISORY COMMITTEE (TAC)

February 19	May 21	August 20	November 19
-------------	--------	-----------	-------------

Transportation Advisory Committee Regular Meetings are held quarterly on the third Tuesday of the months of February, May, August, and November at 5:30 p.m.

PASSED AND ADOPTED by the Homer City Council this 10th day of December, 2012.

CITY OF HOMER

JAMES C. HORNADAY, MAYOR

ATTEST:

JO JOHNSON, CMC, CITY CLERK

Fiscal Impact: Advertizing of meetings in regular weekly meeting ad and advertising of any additional meetings.

Port & Harbor

Monthly Statistical & Performance Report

For the Month of: **October 2012**

Moorage Sales

	<u>2012</u>	<u>2011</u>
Daily Transient	186	210
Monthly Transient	128	118
Semi-Annual Transient	4	5
Annual Transient	9	9
Annual Reserved	160	155

Grid Usage

1 Unit = 1 Grid Tide Use	<u>2012</u>	<u>2011</u>
Wood Grid	7	5
Steel Grid	1	4

Services & Incidents

	<u>2012</u>	<u>2011</u>
Vessels Towed	5	0
Vessels Moved	26	33
Vessels Pumped	0	12
Vessels Sunk	0	0
Vessel Accidents	1	0
Vessel Impounds	0	0
Equipment Impounds	0	0
Vehicle Impounds	0	0
Property Damage	1	0
Pollution Incident	3	2
Fires Reported/Assists	0	0
EMT Assists	2	1
Police Assists	2	0
Public Assists	17	16
Thefts Reported	0	2

Parking Passes

	<u>2012</u>	<u>2011</u>
Long-term Pass	1	2
Monthly Long-term Pass	4	n/a
Seasonal Pass	0	0

Stall Wait List

No. on list at Month's End	<u>2012</u>	<u>2011</u>
18' Stall	1	0
20' Stall	2	2
24' Stall	21	31
32' Stall	36	68
40' Stall	33	28
50' Stall	18	17
75' Stall	6	5
Total:	117	151

Docking & Beach/Barge Use

1 Unit = 1 or 1/2 Day Use	<u>2012</u>	<u>2011</u>
Deep Water Dock	79	11
Pioneer Dock	36	27
Beach Landings	0	12
Barge Ramp	21	7

Wharfage (in short tons)

In Tons, Converted from Lb./Gal.	<u>2012</u>	<u>2011</u>
Seafood	*	155
Cargo/Other	3,930	250
Fuel	43,972	24,437

Crane Hours

	<u>2012</u>	<u>2011</u>
	175.3	124.7

Ice Sales

	<u>2012</u>	<u>2011</u>
For the Month of October	188	183
Year to Date Total	2,539	3,166

Difference between

<u>2011 YTD and 2012 YTD:</u>	627 tons less
-------------------------------	---------------

WEEKLY CRANE TIME / TONS OF ICE
City of Homer - Fish Dock 2012

Date From	Date To	Crane Hours (Weekly)	YTD Crane	Tons of Ice (Weekly)	YTD Ice
1/2/2012	1/8/2012	18.2	18.2	shut down for maintenance	
1/9/2012	1/15/2012	20.9	39.1	shut down for maintenance	
1/16/2012	1/22/2012	16.2	55.3	shut down for maintenance	
1/23/2012	1/29/2012	11.5	66.8	shut down for maintenance	
1/30/2011	2/5/2012	-	-	shut down for maintenance	
2/6/2012	2/12/2012	54.3	121.1	shut down for maintenance	
2/13/2012	2/19/2012	35.5	156.6	shut down for maintenance	
2/20/2012	2/26/2012	21.5	178.1	shut down for maintenance	
2/27/2012	3/4/2012	36.5	214.6	shut down for maintenance	
3/5/2012	3/11/2012	43.4	258	shut down for maintenance	
3/12/2012	3/18/2012	44.1	302.1	32	32
3/19/2012	3/25/2012	57.3	359.4	58	90
3/26/2012	4/1/2012	65.1	424.5	41	131
4/2/2012	4/8/2012	45.3	469.8	40	171
4/9/2012	4/15/2012	32.9	502.7	18	189
4/16/2012	4/22/2012	49.4	552.1	19	208
4/23/2012	4/29/2012	63.6	615.7	81	289
4/30/2012	5/6/2012	40.4	656.1	75	364
5/7/2012	5/13/2012	29.5	685.6	59	423
5/14/2012	5/20/2012	71	756.6	61	484
5/21/2012	5/27/2012	27.8	784.4	50	534
5/28/2012	6/3/2012	64.1	848.5	47	581
6/4/2012	6/10/2012	66.1	914.6	66	647
6/11/2012	6/17/2012	84.5	999.1	91	738
6/18/2012	6/24/2012	74.2	1073.3	113	851
6/24/2012	7/1/2012	81.4	1154.7	149	1000
7/2/2012	7/8/2012	71	1225.7	175	1175
7/9/2012	7/15/2012	80.6	1306.3	171	1346
7/16/2012	7/22/2012	92.8	1399.1	350	1696
7/23/2012	7/29/2012	100.3	1499.4	180	1876
7/30/2012	8/5/2012	77.6	1577	42	1918
8/6/2012	8/12/2012	105.3	1682.3	87	2005
8/13/2012	8/18/2012	46.7	1729	67	2072
8/19/2012	8/26/2012	76.6	1805.6	81	2153
8/27/2012	9/2/2012	41.3	1846.9	64	2217
9/3/2012	9/9/2012	36	1882.9	34	2251
9/10/2012	9/16/2012	45.8	1928.7	20	2271
9/17/2012	9/23/2012	31.4	1960.1	23	2294
9/24/2012	9/30/2012	20.3	1980.4	57	2351
10/1/2012	10/7/2012	75.9	2056.3	99	2450
10/8/2012	10/14/2012	55.5	2111.8	54	2504
10/15/2012	10/21/2012	17.4	2129.2	22	2526
10/22/2012	10/28/2012	26.5	2155.7	13	2539
10/29/2012	11/4/2012	17	2172.7	3	2542
11/5/2012	11/11/2012				
11/12/2012	11/18/2012				
11/19/2012	11/25/2012				
11/26/2012	12/2/2012				
12/3/2012	12/9/2012			shut down for maintenance	
12/10/2012	12/16/2012			shut down for maintenance	
12/17/2012	12/23/2012			shut down for maintenance	
12/24/2012	12/30/2012			shut down for maintenance	
12/31/2012				shut down for maintenance	

Deep Water Dock 2012

\$2.27

Date	Vessel	LOA	Times	Billed	#Dock	\$ Dock	Service Chg
1/6/12	Discovery	183	1015/	Ocean Marine Srv	1	\$ 415.41	\$ 52.00
1/7/12	Discovery	183	/0125	Ocean Marine Srv	1	\$ 415.41	
1/10/12	Bismark Sea & DBL 109	536	1520/	K-Sea Transportation	1	\$ 1,216.72	\$ 52.00
1/11/12	Bismark Sea & DBL 109	536	/1930	K-Sea Transportation	1	\$ 1,216.72	
1/13/12	Discovery	183	1000/1510	Ocean Marine Srv	2	\$ 207.71	na
1/20/12	Discovery (inside rate per MC)	183	1045/1430	Ocean Marine Srv	2	\$ 64.60	na
1/22/12	Discovery (inside rate per MC)	183	0845/0915	Ocean Marine Srv	2	\$ 64.60	na
1/27/12	Discovery	183	1000/1430	Ocean Marine Srv	2	\$ 207.71	na
2/3/12	Discovery	183	0800/	Ocean Marine Srv	2	\$ 415.41	na
2/4/12	Discovery	183	/0615	Ocean Marine Srv	2	\$ 207.71	na
2/6/12	Discovery	183	1000/1400	Ocean Marine Srv	2	\$ 64.60	na
2/10/12	Discovery	183	0700/1400	Ocean Marine Srv	2	\$ 207.71	na
2/17/12	Discovery	183	1000/1800	Ocean Marine Srv	2	\$ 207.71	na
2/24/12	Discovery	183	0900/1505	Ocean Marine Srv	2	\$ 207.71	na
3/2/12	Discovery	183	0900/1530	Ocean Marine Srv	2	\$ 207.71	na
3/9/12	Discovery	183	1000/1510	Ocean Marine Srv	2	\$ 207.71	na
3/13/12	Island Champion & Seatac 300	300	0900/	RSP / Pen. Scrap	1	\$ 681.00	\$ 52.00
3/14/12	Island Champion & Seatac 300	300		RSP / Pen. Scrap	1	\$ 681.00	
3/15/12	Island Champion & Seatac 300	300	/1130	RSP / Pen. Scrap	1	\$ 681.00	
3/16/12	Discovery	183	1000/1510	Ocean Marine Srv	2	\$ 207.71	na
3/23/12	Arctic Seal	130	1430/	Bering Marine Corp.	1	\$ 295.10	\$ 52.00
3/23/12	Discovery	183	0830/1900	Ocean Marine Srv	2	\$ 207.71	na
3/24/12	Arctic Seal	130	/2010	Bering Marine Corp.	1	\$ 295.10	
3/24/12	Perseverance	189	1500/	Cispri	1	\$ 429.03	\$ 52.00
3/25/12	Perseverance	189		Cispri	1	\$ 429.03	
3/26/12	Perseverance	189		Cispri	1	\$ 429.03	
3/27/12	Perseverance	189		Cispri	1	\$ 429.03	
3/28/12	Perseverance	189		Cispri	1	\$ 429.03	
3/29/12	Perseverance	189		Cispri	1	\$ 429.03	
3/30/12	Perseverance	189		Cispri	1	\$ 429.03	
3/31/12	Perseverance	189		Cispri	1	\$ 429.03	
4/1/12	Perseverance	189	/2000	Cispri	1	\$ 429.03	
4/4/12	Maxine M	103	1200/1330	Big Creek Fisheries	1	\$ 233.81	\$ 52.00
4/4/12	Discovery	183	0900/1700	Ocean Marine Srv	2	\$ 207.71	na
4/6/12	Discovery	183	0840/1200	Ocean Marine Srv	2	\$ 64.60	na
4/7/12	Endurance	215	0700/	Alyeska Pipe/Crowley	1	\$ 488.05	\$ 52.00
4/8/12	Endurance	215		Alyeska Pipe/Crowley	1	\$ 488.05	
4/9/12	Endurance	215		Alyeska Pipe/Crowley	1	\$ 488.05	
4/9/12	Discovery	183	1230/1315	Ocean Marine Srv	2	\$ 64.60	na
4/10/12	Endurance	215		Alyeska Pipe/Crowley	1	\$ 488.05	
4/10/12	Perseverance	189	0700/	Cispri	2	\$ 429.03	na
4/11/12	Endurance	215		Alyeska Pipe/Crowley	1	\$ 488.05	
4/11/12	Perseverance	189		Cispri	2	\$ 429.03	
4/12/12	Maxine	75	1000/1500	Vogel, William	1	\$ 170.25	\$ 52.00
4/12/12	Endurance	215	/0705	Alyeska Pipe/Crowley	1	\$ 488.05	
4/12/12	Perseverance	189		Cispri	2	\$ 429.03	
4/13/12	Discovery	183	1000/1315	Ocean Marine Srv	2	\$ 64.60	na
4/13/12	Endurance	215	1720/2100	Alyeska Pipe/Crowley	1	\$ 488.05	\$ 52.00
4/13/12	Perseverance	189		Cispri	1	\$ 429.03	
4/14/12	Perseverance	189		Cispri	1	\$ 429.03	
4/15/12	Perseverance	189		Cispri	1	\$ 429.03	
4/16/12	Perseverance	189		Cispri	1	\$ 429.03	
4/17/12	Perseverance	189		Cispri	1	\$ 429.03	
4/17/12	Discovery	183	0800/1145	Ocean Marine Srv	2	\$ 64.60	na
4/18/12	Perseverance	189		Cispri	1	\$ 429.03	
4/19/12	Perseverance	189	/2200	Cispri	1	\$ 429.03	
4/20/12	Discovery	183	0900/1300	Ocean Marine Srv	2	\$ 64.60	na
4/21/12	Justine Foss	126	0830/	Foss Maritime	1	\$ 286.02	\$ 52.00
4/21/12	Pacific Explorer	105	0830/	Foss Maritime	1	\$ 238.35	
4/22/12	Justine Foss	126	/0545	Foss Maritime	1	\$ 286.02	
4/22/12	Pacific Explorer	105	/0545	Foss Maritime	1	\$ 238.35	
4/25/12	Justine Foss	126	2200/	Foss Maritime	1	\$ 286.02	
4/25/12	Pacific Explorer	105	2200/	Foss Maritime	1	\$ 238.35	
4/26/12	Justine Foss	126	/1000	Foss Maritime	1	\$ 286.02	
4/26/12	Pacific Explorer	105	/1000	Foss Maritime	1	\$ 238.35	
5/1/12	Millie Cruz	92	1600/ ?	Cruz Marine	1	\$ 208.84	\$ 52.00
5/10/12	Arctic Seal	130	1000/1230	Bering Marine Corp.	1	\$ 295.10	\$ 52.00
5/10/12	Nunaniq	155	0800/1100	Northland Holdings	2	\$ 54.72	na
5/16/12	Perseverance	189	1700/	Cispri	1	\$ 429.03	\$ 52.00
5/17/12	Perseverance	189		Cispri	1	\$ 429.03	
5/18/12	Perseverance	189	/1820	Cispri	1	\$ 429.03	
5/30/12	Silver Shadow	610	0800/1800	AK Maritime Cruise Line	1	\$ 1,384.70	\$ 481.53
6/9/12	Amsterdam	781	0930/1800	Holland America	1	\$ 1,772.87	\$ 481.53
6/10/12	Lazy Bay	104	1600/1900	Lazy Bay LLC	2	\$ 36.71	na
6/11/12	Perseverance	189	1700/	Cispri	1	\$ 429.03	\$ 52.00
6/12/12	Perseverance	189		Cispri	1	\$ 429.03	
6/13/12	Perseverance	189		Cispri	1	\$ 429.03	

Deep Water Dock 2012

Date	Vessel	LOA	Times	Billed	#Dock	\$ Dock	Service Chg
6/13/12	Lazy Bay	104	1230/2130	Lazy Bay LLC	2	\$ 118.04	na
6/14/12	Perseverance	104	/1800	Cispri	1	\$ 429.03	
6/17/12	Lazy Bay	104	1430/2000	Lazy Bay LLC	2	\$ 118.04	na
6/23/12	Amsterdam	781	0930/1800	Holland America	1	\$ 1,772.87	\$ 481.53
7/7/12	Amsterdam	781	0900/1800	Holland America	1	\$ 4,668.88	\$ 481.52
7/17/12	American Beauty	108	1000/	American Beauty LLC	2	\$ 423.25	na
7/18/12	American Beauty	108	/1400	American Beauty LLC	2	\$ 423.25	
7/19/12	RM Thorstenson	315	1000/	Icicle	1	\$ 871.38	\$ 52.00
7/20/12	RM Thorstenson	315		Icicle	1	\$ 871.38	
7/21/12	RM Thorstenson	315		Icicle	1	\$ 871.38	
7/22/12	RM Thorstenson	315		Icicle	1	\$ 871.38	
7/23/12	RM Thorstenson	315		Icicle	1	\$ 871.38	
7/24/12	RM Thorstenson	315		Icicle	1	\$ 871.38	
7/24/12	American Beauty	108	1800/	American Beauty LLC	2	\$ 211.63	na
7/25/12	RM Thorstenson	315		Icicle	1	\$ 871.38	
7/25/12	American Beauty	108	/0800	American Beauty LLC	2	\$ 211.63	
7/25/12	Akemi	95	1015/1500	Akemi Group LLC	2	\$ 127.07	na
7/26/12	RM Thorstenson	315		Icicle	1	\$ 871.38	
7/27/12	Endeavor	181	1530/	Cispri	2	\$ 423.25	na
7/27/12	RM Thorstenson	315		Icicle	1	\$ 871.38	
7/28/12	RM Thorstenson	315		Icicle	1	\$ 871.38	
7/28/12	Endeavor	181		Cispri	2	\$ 423.25	
7/29/12	RM Thorstenson	315		Icicle	1	\$ 871.38	
7/29/12	Endeavor	181		Cispri	2	\$ 423.25	
7/30/12	RM Thorstenson	315	/1230	Icicle	1	\$ 871.38	
7/30/12	Endeavor	181		Cispri	2	\$ 423.25	
7/31/12	Endeavor	181		Cispri	2	\$ 423.25	
8/1/12	Endeavor	181		Cispri	1	\$ 423.25	
8/2/12	Endeavor	181		Cispri	1	\$ 423.25	
8/3/12	Endeavor	181		Cispri	1	\$ 423.25	
8/4/12	Endeavor	181	/0545	Cispri	1	\$ 423.25	
8/4/12	Amsterdam	781	0900/1800	Holland America	1	\$ 4,668.88	\$ 481.52
8/5/12	Endeavor	181		Cispri	1	\$ 423.25	
8/6/12	Endeavor	181		Cispri	1	\$ 423.25	
8/7/12	Endeavor	181		Cispri	1	\$ 423.25	
8/7/12	Reflections / bill Crowley	24	0800/1900	Crowley	2	\$ 127.06	
8/16/12	Noaa Rainier	231	0930/	NOAA	2	\$ 677.75	
8/17/12	Noaa Rainier	231		NOAA	2	\$ 677.75	
8/18/12	Amsterdam	781	0830/1800	Holland America	1	\$ 4,668.88	\$ 481.52
8/18/12	Noaa Rainier	231		NOAA	2	\$ 677.75	
8/19/12	Noaa Rainier	231		NOAA	2	\$ 677.75	
8/20/12	Noaa Rainier	231	/1100	NOAA	2	\$ 338.87	
8/20/12	Sea Hawk & DBL 79	345	1600/	Kirby Offshore	1	\$ 871.38	\$ 52.00
8/21/12	Sea Hawk & DBL 79	345		Kirby Offshore	1	\$ 871.38	
8/22/12	Sea Hawk & DBL 79	345		Kirby Offshore	1	\$ 871.38	
8/23/12	Sea Hawk & DBL 79	345	/0815	Kirby Offshore	1	\$ 871.38	
8/24/12	Sea Hawk & DBL 79	345	? /1815	Kirby Offshore	1	\$ 871.38	\$ 52.00
8/25/12	Pacific Explorer	105	0805/1020	Buccaneer AK Oper	1	\$ 423.25	\$ 52.00
8/25/12	Pacific Explorer	105	1500/1530	Buccaneer AK Oper	2	\$ 65.82	
8/26/12	Southern Wind	144	1900/	Trident Seafoods	1	\$ 423.25	\$ 52.00
8/26/12	Endeavor	181	?	Cispri	1	\$ 423.25	\$ 52.00
8/27/12	Southern Wind	144		Trident Seafoods	1	\$ 423.25	
8/27/12	Endeavor	181		Cispri	2	\$ 423.25	
8/27/12	Pacific Explorer	105	1400/1430	Buccaneer AK Oper	2	\$ 65.82	
8/28/12	Endeavor	181		Cispri	2	\$ 423.25	
8/28/12	Pacific Explorer	105	1000/1030	Buccaneer AK Oper	2	\$ 65.82	
8/29/12	Pacific Explorer	105	?	Buccaneer AK Oper	1	\$ 423.25	\$ 52.00
8/29/12	Elsbeth III	90	0945/	Buccaneer AK Oper	1	\$ 254.13	\$ 52.00
8/29/12	Endeavor	181		Cispri	2	\$ 423.25	
8/29/12	Rig Endeavour	301	1630/	Buccaneer AK Oper	1	\$ 871.38	\$ 52.00
8/30/12	Pacific Explorer	105		Buccaneer AK Oper	1	\$ 423.25	
8/30/12	Elsbeth III	90		Buccaneer AK Oper	1	\$ 254.13	
8/30/12	Rig Endeavour	301		Buccaneer AK Oper	1	\$ 871.38	
8/30/12	Endeavor	181		Cispri	2	\$ 423.25	
8/31/12	Pacific Explorer	105	/1600	Buccaneer AK Oper	1	\$ 423.25	
8/31/12	Elsbeth III	90	/1600	Buccaneer AK Oper	1	\$ 254.13	
8/31/12	Rig Endeavour	301	/1600	Buccaneer AK Oper	1	\$ 871.38	
8/31/12	Endeavor	181		Cispri	2	\$ 423.25	
9/1/12	Amsterdam	781	0900/1800	Holland America	1	\$ 4,668.88	\$ 481.53
9/1/12	Rig Endeavour	301	1900/	Buccaneer AK Oper	1	\$ 871.38	\$ 52.00
9/1/12	Elsbeth III	90	1900/	Buccaneer AK Oper	1	\$ 254.13	\$ 52.00
9/1/12	Pacific Explorer	105	1900/	Buccaneer AK Oper	1	\$ 423.25	\$ 52.00
9/1/12	Endeavor	181		Cispri	2	\$ 423.25	
9/2/12	Rig Endeavour	301		Buccaneer AK Oper	1	\$ 871.38	
9/2/12	Elsbeth III	90		Buccaneer AK Oper	1	\$ 254.13	
9/2/12	Pacific Explorer	105		Buccaneer AK Oper	1	\$ 423.25	
9/2/12	Endeavor	181	/2330	Cispri	2	\$ 423.25	
9/3/12	Rig Endeavour	301		Buccaneer AK Oper	1	\$ 871.38	

Deep Water Dock 2012

Date	Vessel	LOA	Times	Billed	#Dock	\$ Dock	Service Chg
9/3/12	Elsbeth III	90		Buccaneer AK Oper	1	\$ 254.13	
9/3/12	Pacific Explorer	105		Buccaneer AK Oper	1	\$ 423.25	
9/4/12	Rig Endeavour	301		Buccaneer AK Oper	1	\$ 871.38	
9/4/12	Elsbeth III	90		Buccaneer AK Oper	1	\$ 254.13	
9/4/12	Pacific Explorer	105		Buccaneer AK Oper	1	\$ 423.25	
9/5/12	Rig Endeavour	301		Buccaneer AK Oper	1	\$ 871.38	
9/5/12	Elsbeth III	90		Buccaneer AK Oper	1	\$ 254.13	
9/5/12	Pacific Explorer	105	/0930	Buccaneer AK Oper	1	\$ 423.25	
9/5/12	Pacific Explorer	105	0945/	Buccaneer AK Oper	2	1 dock charge 9/5	
9/6/12	Rig Endeavour	301		Buccaneer AK Oper	1	\$ 871.38	
9/6/12	Elsbeth III	90		Buccaneer AK Oper	1	\$ 254.13	
9/6/12	Pacific Explorer	105		Buccaneer AK Oper	1	\$ 423.25	
9/7/12	Rig Endeavour	301		Buccaneer AK Oper	1	\$ 871.38	
9/7/12	Elsbeth III	90		Buccaneer AK Oper	1	\$ 254.13	
9/7/12	Pacific Explorer	105		Buccaneer AK Oper	1	\$ 423.25	
9/8/12	Rig Endeavour	301		Buccaneer AK Oper	1	\$ 871.38	
9/8/12	Elsbeth III	90		Buccaneer AK Oper	1	\$ 254.13	
9/8/12	Pacific Explorer	105		Buccaneer AK Oper	1	\$ 423.25	
9/9/12	Rig Endeavour	301		Buccaneer AK Oper	1	\$ 871.38	
9/9/12	Elsbeth III	90		Buccaneer AK Oper	1	\$ 254.13	
9/9/12	Pacific Explorer	105		Buccaneer AK Oper	1	\$ 423.25	
9/10/12	Rig Endeavour	301		Buccaneer AK Oper	1	\$ 871.38	
9/10/12	Elsbeth III	90		Buccaneer AK Oper	1	\$ 254.13	
9/10/12	Pacific Explorer	105		Buccaneer AK Oper	1	\$ 423.25	
9/11/12	Rig Endeavour	301		Buccaneer AK Oper	1	\$ 871.38	
9/11/12	Elsbeth III	90		Buccaneer AK Oper	1	\$ 254.13	
9/11/12	Pacific Explorer	105		Buccaneer AK Oper	1	\$ 423.25	
9/12/12	Rig Endeavour	301		Buccaneer AK Oper	1	\$ 871.38	
9/12/12	Elsbeth III	90		Buccaneer AK Oper	1	\$ 254.13	
9/12/12	Pacific Explorer	105		Buccaneer AK Oper	1	\$ 423.25	
9/13/12	Rig Endeavour	301		Buccaneer AK Oper	1	\$ 871.38	
9/13/12	Elsbeth III	90		Buccaneer AK Oper	1	\$ 254.13	
9/13/12	Pacific Explorer	105		Buccaneer AK Oper	1	\$ 423.25	
9/14/12	Rig Endeavour	301		Buccaneer AK Oper	1	\$ 871.38	
9/14/12	Elsbeth III	90		Buccaneer AK Oper	1	\$ 254.13	
9/14/12	Pacific Explorer	105		Buccaneer AK Oper	1	\$ 423.25	
9/15/12	Rig Endeavour	301		Buccaneer AK Oper	1	\$ 871.38	
9/15/12	Elsbeth III	90		Buccaneer AK Oper	1	\$ 254.13	
9/15/12	Pacific Explorer	105		Buccaneer AK Oper	1	\$ 423.25	
9/16-27/2012	Rig Endeavour	301	X 12 days	Buccaneer AK Oper	1	\$ 10,456.56	
9/16-27/2012	Elsbeth III	90	X 12 days	Buccaneer AK Oper	1	\$ 2,941.56	
9/16-18/2012	Pacific Explorer	105	X 3 days	Buccaneer AK Oper	1	\$ 1,269.75	
9/19-26/2012	Pacific Explorer	105	X 8 days	Buccaneer AK Oper	2	\$ 3,386.00	
9/27/12	Pacific Explorer	105		Buccaneer AK Oper	1	\$ 423.25	
9/28-30/2012	Rig Endeavour	301	x 3 days	Buccaneer AK Oper	1	\$ 2,614.14	
9/28-30/2012	Elsbeth III	90	x 3 days	Buccaneer AK Oper	1	\$ 762.39	
9/28-30/2012	Pacific Explorer	105	x 3 days	Buccaneer AK Oper	2	\$ 1,269.75	
9/30/12	Pacific Explorer	105	1900/	Buccaneer AK Oper	1	one chrg 9/30/12	\$ 52.00
10/1-10/30/12	Rig Endeavour	301	x 30 days	Buccaneer AK Oper	1	\$ 26,141.40	
10/1-10/3/12	Elsbeth III	90	x 3 days	Buccaneer AK Oper	1	\$ 762.39	
10/4-13/12	Elsbeth III	90	x 10 days /1400	Buccaneer AK Oper	2	\$ 2,541.30	
10/1-10/3/12	Pacific Explorer	105	x 3 days	Buccaneer AK Oper	1	\$ 1,269.75	
10/4-13/12	Pacific Explorer	105	x 10 days /1400	Buccaneer AK Oper	2	\$ 4,232.50	
10/9-11/12	Pamlay	185	x 2 1/2 days	Pacific Pile & Marine	2	\$ 1,058.13	
10/15-16/2012	Pacific Explorer	105	x 2	Buccaneer AK Oper	1	\$ 846.50	
10/15/12	Elsbeth III	90	1430/	Buccaneer AK Oper	2	\$ 127.07	1/2 day
10/15/12	Gretch H & Barge Mr. Ed	136	1430/	Boyer Towing	2	\$ 211.63	1/2 day
10/16/12	Elsbeth III	90		Buccaneer AK Oper	1	\$ 254.13	
10/26/12	Endeavor CISPRI	181	1300/1400	Cispri	2	\$ 65.81	4hr
10/29/12	Endeavor CISPRI	181	0720/	Cispri	2	\$ 423.25	
10/30/12	Endeavor CISPRI	181		Cispri	2	\$ 423.25	
						\$ 96,557.10	\$ 4,722.68
11/6/12	Barge 103 = 430'						
	Barge 303= 320'						
	Barge 141 = 272'	PER OCEAN MARINE: 258					
	Barge 110 = 330'						
	Barge 280 = 282'						
	Barge 282 = 262' PMS						
	Barge 303= 320'						
	Barge 344 = 330'	NOW: 330', plus tug = 429 2/18/04					
	Barge 360-10 = 360'						
	Barge 450-10 = 450'						

Deep Water Dock 2012

[illegible]

Pioneer Dock 2012

				\$2.27			
Date	Vessel	LOA	Times	Billed	#Dock	\$ Dock	Service Chg
01/05/12	Vigilant	100	0645/1115	Crowley	1	\$ 227.00	\$ 52.00
01/20/12	Vigilant	100	0900/1200	Crowley	1	\$ 227.00	\$ 52.00
02/05/12	Pacific Wolf & DBL 54	395	0830/	K-Sea Transp	1	\$ 896.65	\$ 52.00
02/06/12	Pacific Wolf & DBL 54	395	/1645	K-Sea Transp	1	\$ 896.65	
02/13/12	Sea Prince	119	1300/1550	Crowley	1	\$ 270.13	\$ 52.00
02/21/12	Vigilant	100	1300/1500	Crowley	1	\$ 227.00	\$ 52.00
02/26/12	Pacific Wolf & DBL 54	395	1400/1830	K-Sea Transp	1	\$ 896.65	\$ 52.00
02/29/12	Pacific Wolf & DBL 54	395	0600/1545	K-Sea Transp	1	\$ 896.65	\$ 52.00
03/07/12	Pacific Wolf & DBL 54	395	1000/1800	K-Sea Transp	1	\$ 896.65	\$ 52.00
03/09/12	Pacific Wolf & DBL 54	395	0015/1920	K-Sea Transp	1	\$ 896.65	\$ 52.00
03/12/12	Pacific Wolf & DBL 54 2.5hr	395	1030/1300	K-Sea Transp	1	\$ 139.43	
03/13/12	Pacific Wolf & DBL 54	395	1200/1830	K-Sea Transp	1	\$ 896.65	\$ 52.00
03/21/12	Pacific Wolf & DBL 54	395	1600/2205	K-Sea Transp	1	\$ 896.65	\$ 52.00
03/26/12	Pacific Wolf & DBL 54	395	0815/1530	K-Sea Transp	1	\$ 896.65	\$ 52.00
04/06/12	Vigilant	100	1000/1150	Crowley	1	\$ 227.00	\$ 52.00
04/09/12	Pacific Wolf & DBL 54	395	0740/1400	K-Sea Transp	1	\$ 896.65	\$ 52.00
04/13/12	Pacific Wolf & DBL 54	395	0800/1730	K-Sea Transp	1	\$ 896.65	\$ 52.00
04/13/12	Arctic Wolf	129	1740/0000	Terminel, Michael	1	\$ 292.83	\$ 52.00
04/23/12	Pacific Wolf & DBL 54	395	0800/1500	K-Sea Transp	1	\$ 896.65	\$ 52.00
05/01/12	Pacific Wolf & DBL 54	395	1230/1745	Kirby Offshore	1	\$ 896.65	\$ 52.00
05/04/12	Vigilant	100	1000/1300	Crowley	1	\$ 227.00	\$ 52.00
05/11/12	Pacific Wolf & DBL 54	395	0610/?	Kirby Offshore	1	\$ 896.65	\$ 52.00
05/16/12	Perseverance	189	1130/1645	Cispri	1	\$ 429.03	\$ 52.00
05/21/12	Pacific Wolf & DBL 54	395	0800/2100	Kirby Offshore	1	\$ 896.65	\$ 52.00
05/29/12	Pacific Wolf & DBL 54	395	0800/1600	Kirby Offshore	1	\$ 896.65	\$ 52.00
06/08/12	Pacific Wolf & DBL 54	395	0900/1900	Kirby Offshore	1	\$ 896.65	\$ 52.00
06/15/12	Vigilant	100	0900/1130	Crowley	1	\$ 227.00	\$ 52.00
06/15/12	Pacific Wolf & DBL 54	395	1230/1730	Kirby Offshore	1	\$ 896.65	\$ 52.00
07/06/12	Pacific Wolf & DBL 54	395	0925/1800	Kirby Offshore	1	\$ 1,043.38	\$ 52.00
07/12/12	Pacific Wolf & DBL 54	395	0830/1500	Kirby Offshore	1	\$ 1,043.38	\$ 52.00
07/18/12	Vigilant	100	0145/1400	Crowley	1	\$ 254.13	\$ 52.00
07/20/12	Pacific Wolf & DBL 54	395	1230/1815	Kirby Offshore	1	\$ 1,043.38	\$ 52.00
07/25/12	Pacific Wolf & DBL 54	395	0530/1145	Kirby Offshore	1	\$ 1,043.38	\$ 52.00
07/25/12	Cape Greig	182	1600/	Cape Greig LLC	1	\$ 423.25	\$ 52.00
07/26/12	Cape Greig	182		Cape Greig LLC	1	\$ 423.25	
07/26/12	Endeavor	181	0815/	Cispri	1	\$ 423.25	\$ 52.00
07/27/12	Cape Greig	182	/1000	Cape Greig LLC	1	\$ 423.25	
07/28/12	Cape Greig	182	0600/1700	Cape Greig LLC	1	\$ 423.25	\$ 52.00
07/30/12	RM Thorstenson	315	1245/1630	Icicle	1	\$ 871.38	\$ 52.00
7/30-31/201	Pacific Wolf & DBL 54	395	0015/1230; 0015/1200	Kirby Offshore	1	\$ 1,043.38	\$ 52.00
08/03/12	Vigilant	100	? /0115	Crowley	1	\$ 254.13	\$ 52.00
08/03/12	Pacific Wolf & DBL 54	395	1250/1905	Kirby Offshore	1	\$ 1,043.38	\$ 52.00
08/04/12	Endeavor	181	0630/1045	Cispri	1	\$ 423.25	\$ 52.00
08/04/12	Pacific Raven & Kays Pt.	328	1930/	Kirby Offshore	1	\$ 871.38	\$ 52.00
08/05/12	Pacific Raven & Kays Pt.	328	/0745	Kirby Offshore	1	\$ 871.38	
08/18/12	Pacific Wolf & DBL 54	395	?/1640	Kirby Offshore	1	\$ 1,043.38	\$ 52.00
08/20/12	Vigilant	100	0230/1045	Crowley	1	\$ 254.13	\$ 52.00
08/20/12	NOAA Rainier	231	1200/1630	NOAA	1	\$ 677.75	\$ 52.00
08/21/12	Pacific Wolf & DBL 54	395	1230/1845	Kirby Offshore	1	\$ 1,043.38	\$ 52.00
08/29/12	Pacific Wolf & DBL 54	395	1000/	Kirby Offshore	1	\$ 1,043.38	\$ 52.00
08/31/12	Vigilant	100	2200/1600	Crowley	1	\$ 254.13	\$ 52.00
09/01/12	Vigilant	100	1100/1700	Crowley	1	\$ 254.13	\$ 52.00
09/06/12	Tigla	120	0800/1115	US Fish & Wildlife	1	\$ 423.25	\$ 52.00
09/11/12	Sam B & Barge Pamtay	185	0800/1015	Brice Marine LLC	1	\$ 423.25	\$ 52.00
09/11/12	Aquila	165	1030/1150	Tamarack Ventures	1	\$ 423.25	\$ 52.00
09/12/12	Aquila	165	1430/2000	Tamarack Ventures	1	\$ 423.25	\$ 52.00
09/24/12	Pacific Wolf & DBL 54	395	0900/1615	Kirby Offshore	1	\$ 1,043.38	\$ 52.00
10/03/12	Vigilant	100	0800/0845	Crowley	1	\$ 254.13	\$ 52.00
10/03/12	Pacific Wolf & DBL 54	395	0900/1730	Kirby Offshore	1	\$ 1,043.38	\$ 52.00
10/12/12	Pacific Wolf & DBL 54	395	0900/1900	Kirby Offshore	1	\$ 1,043.38	\$ 52.00
10/17/12	Endeavor & Responder	181	2300/1600	Cispri	1	\$ 423.25	\$ 52.00
10/18/12	Endeavor & Responder	181	1300/1645	Cispri	1	\$ 423.25	\$ 52.00
10/24/12	Endeavor & Barge 141	272	1000/1730	Cispri	1	\$ 677.75	\$ 52.00
10/26/12	Vigilant	100	0820/1100	Crowley	1	\$ 254.13	\$ 52.00
10/26/12	Pacific Explorer	105	1330/1500	Buccaneer AK	1	\$ 423.25	\$ 52.00

Pioneer Dock 2012

[illegible]

Water Usage 2012

PIONEER DOCK										DWD	
DATE	VESSEL	Begin Read	End Read	Gal.	Charged	Conx Fee	DATE	VESSEL	Begin Read	End Read	
02/26/12	Pacific Wolf & DBL 54	149930	152700	2770	\$	194.05	01/05/12	Vigilant	1328000	1337000	
02/28/12	Tustumena	1718800	1722900	4100	\$	194.05	01/13/12	Discovery	1337000	1371700	
03/01/12	Tustumena	1722900	1731900	9000	\$	349.29	01/14/12	Vigilant	1371700	1375000	
03/04/12	Tustumena	1731900	1741300	9400	\$	364.81	1/22/2012	Vigilant	1375000	1377700	
03/06/12	Tustumena	1741300	1753800	12500	\$	485.13	01/27/12	Discovery	1377000	1384000	
03/11/12	Tustumena	1753800	1771700	17900	\$	694.70	02/08/12	Vigilant	1383000	1400550	
03/13/12	Tustumena	1771700	1777900	6200	\$	240.62	02/24/12	Discovery	1400550	1446000	
03/18/12	Tustumena	1777900	1788300	10400	\$	403.63	02/24/12	Vigilant	1446000	1449000	
3/20/12	Tustumena	1788300	1796500	8200	\$	318.24	3/2/2012	Discovery	1451000	1495000	
3/25/12	Tustumena	1,796,566	1810300	13734	\$	533.25	03/09/12	Vigilant	1495000	1499000	
3/27/12	Tustumena	1810300	1819200	8900	\$	345.41	3/23/2012	Arctic Seal	1499060	1511000	
4/1/12	Tustumena	1819257	1831000	11743	\$	455.75	3/29/2012	Perseverance	1511000	1540000	
4/2/12	Tiglux	1831000	1832700	1700	\$	194.05	3/30/2012	Vigilant	1541000	1547000	
4/5/12	Tustumena	1832700	1846000	13300	\$	516.17	4/4/12	Discovery	1547000	1629000	
4/8/12	Tustumena	1846000	1855600	9600	\$	372.58	4/18/2012	Perseverance	1,631,000	1,640,000	
4/13/12	Arctic Wolf	1865100	1885020	19920	\$	773.10	4/25/2012	Justine Foss	1,640,000	1,641,000	
5/1/12	Pacific Wolf & DBL 54	152700	157200	4500	\$	194.05	5/8/12	Vigilant	1641000	1645000	
5/22/12	Tustumena	1887100	1898100	11000	\$	426.91	5/10/12	Nunaniq	1645000	1649675	
5/26/12	Tustumena	1898400	1906100	7700	\$	298.84	5/14/2012	Tiglux	1650000	1,654,000	
5/27/12	Tustumena	1906100	1914500	8400	\$	326.00	5/19/2012	Vigilant	1655000	1,659,000	
5/29/2012	Pacific Wolf & DBL 54	157300	162100	4800	\$	194.05	5/28/12	Vigilant	1662000	1,665,000	
5/29/2012	Tustumena	1,914,800	1931800	17000	\$	659.77	28-May DOCK WASHING		1665000	1,669,000	
6/8/2012	Pacific Wolf & DBL 54	1,932,500	1,934,400	1900	\$	194.05	5/29/2012 DOCK WASHING		1669000	1,672,000	
7/3/2012	Tustumena	1,935,800	1947200	11400	\$	442.43	5/30/2012 Silver Shadow		1672000	1,748,000	
7/6/2012	Pacific Wolf	163,000	164800	1800	\$	194.05	6/8/2012 DOCK WASHING		1748000	1,753,000	
8/4/2012	Pacific Raven & Kays Pt	166,770	167600	830	\$	194.05	14-Jun Perseverance		1754000	1,769,950	
8/5/2012	Tustumena	1,951,800	1,959,100	7300	\$	283.31	16-Jun Daniel D		1772000	1,775,000	
8/29/2012	Pacific Wolf & DBL 54	169,000	170,599	1599	\$	194.05	6/16/12 Vigilant		1775000	1,777,000	
2-Sep Tustumena		1,995,776	2003930	8154	\$	316.46	6/22/2012 DOCK WASHING		1792000	1,797,000	
11-Sep Sam B & Barge Pamtay		2,005,500	2007100	1600	\$	194.05	7/6/2012 DOCK WASHIN		1816000	1,819,000	
9/26/2012 Tustumena		2,007,100	2,018,100	11000	\$	426.91	7/16/2012 dock washing		1820000	1,831,000	
10/2/2012 Helenka B		2,031,600	2,032,800	1200	\$	194.05	17-Jul American Beauty		1831000	1,833,000	
3-Oct Pacific Wolf & DBL 54		2,032,800	2,035,300	2500	\$	194.05	7/19/2012 Vigilant		1833000	1,850,000	
10/26/2012 Pacific Explorer		2,035,490	2,039,695	4205	\$	194.05	7/19/2012 RM Thorstenson		1850000	1,867,000	
10/29/2012 Helenka B		2,039,600	2,042,600	3000	\$	194.05	21-Jul Vigilant		1867000	1,868,000	
11/5/2012 Pacific Wolf & DBL 54		170,700	174,600	3900	\$	194.05	7/21-26/12 RM Thorstenson		1868000	1,910,000	
				0			26-Jul Vigilant		1910000	1,912,000	
	washing down dock results in missing begin/end reads				\$		7/26-30/12 RM Thorstenson		1912000	1,952,000	
				273155		11,944.06					

Gal.	\$102.00 CONX	194.05 minimum charge	Charged	Conx Fee
9000	\$	349.29	\$	102.00
34700	\$	1,346.71	\$	102.00
3300	\$	194.05	\$	102.00
2700	\$	194.05	\$	102.00
7000	\$	271.67	\$	102.00
17550	\$	681.12	\$	102.00
45440	\$	1,763.53	\$	102.00
3000	\$	194.05	\$	102.00
44000	\$	1,707.64	\$	102.00
4000	\$	194.05	\$	102.00
11940	\$	463.39	\$	102.00
29000	\$	1,125.49	\$	102.00
6000	\$	232.86	\$	102.00
82000	\$	3,182.42	\$	102.00
9000	\$	349.29	\$	102.00
1000	\$	194.05	\$	102.00
4000	\$	194.05	\$	102.00
4675	\$	194.05	\$	102.00
4000	\$	194.05	\$	102.00
4000	\$	194.05	\$	102.00
3000	\$	194.05	\$	102.00
4000				
3000				
76000	\$	2,949.56	\$	102.00
5000				
15,950	\$	599.61	\$	102.00
3,000		194.05	\$	102.00
2,000	\$	194.05	\$	102.00
5000				
3,000				
11000				
2000	\$	194.05	\$	102.00
17000	\$	659.77	\$	102.00
17000	\$	659.77	\$	102.00
1000	\$	194.05	\$	102.00
42,000	\$	1,630.02	\$	102.00
2000	\$	194.05	\$	102.00
40,000	\$	1,552.40	\$	102.00

2012 Homer City Council Meetings
Port & Harbor Advisory Commission Attendance

It is a goal of the Commission to have a member speak regularly to the City Council at council meetings. There is a special place on the council's agenda specifically for this. After the Council approves the consent agenda, there is a spot for visitors, and then agenda item number seven, announcements, reports from Commissions, the Borough, etc. That is when you would jump up and speak. If the mayor moves on to public hearings, you have waited too long! Typically if there is no visitor or special presentation, you would be talking within the first half hour (or less) of the Council meeting. The Regular meeting start time is 6:00 p.m.

Each commissioner is assigned a month and is responsible for attending one of the two council meetings, ***OR finding another commissioner to do it in their place*** if they will not be attending the meeting.

<u>Meeting Date</u>	<u>Commissioner</u>
January 9, 23	<u>ZIMMERMAN</u>
February 13, 27	<u>CARROLL</u>
March 12, 27(Tuesday)	<u>WEDIN</u>
April 9, 23	<u>HARTLEY</u>
May 14, 29(Tuesday)	<u>ULMER</u>
June 11, 25	<u>HOWARD</u>
July 23	<u>ZIMMERMAN</u>
August 13, 27	<u>ULMER</u>
September 10, 24	<u>HOWARD</u>
October 8, 22	<u>WEDIN</u>
November 26	<u>STOCKBURGER</u>
December 10	<u>STOCKBURGER</u>

Budget is given to department heads in July, August to return to city manager for first presentation to council on September.

Budget related council meetings, check schedule at that time: October, November, December

The regular December meeting is when the Budget is finally approved by City Council.

Any Special Meetings are usually schedule the first Monday of the month.

Office of the City Clerk

Jo Johnson, CMC, City Clerk
Melissa Jacobsen, CMC, Deputy City Clerk II
Renee Krause, CMC, Deputy City Clerk I



491 E. Pioneer Avenue
Homer, Alaska 99603
(907) 235-3130
(907) 235-8121
ext: 2224, 2226, or 2227
Fax: (907) 235-3143
Email: clerk@ci.homer.ak.us

MEMORANDUM

TO: Chair Ulmer and the Port and Harbor Advisory Commission

FROM: Melissa Jacobsen, CMC, Deputy City Clerk

DATE: November 9, 2012

SUBJECT: Informational Discussion regarding the Icicle Seafood's Lease with the City of Homer

Commissioner Carroll requested that the Icicle Seafood's lease be included on the Commission's meeting agenda for discussion.

As the Commission may already know, a complaint was filed with the Federal Maritime Commission regarding Icicle Seafood's lease with the City of Homer. Because of the sensitivity of this matter and the potential of unintentionally crossing a line of Attorney Client Privilege, City Manager Wrede agreed that a Commission meeting is not an appropriate venue for discussing the lease at this time.

All City of Homer leases are public information and anyone is able to view the information. Should Commissioner Carroll, or any other Commissioner, want to view the lease for general information purposes, they may do so by completing the request for public records form available on line or at the City Clerk's office. Once the request is completed arrangements can be made with staff to view the lease and ask questions.

