

**ADDENDUM NO. 1
TO THE BID DOCUMENTS**

Project: Deep Water Dock Uplands Improvements 2016
Addendum Issue Date: February 4, 2016
Bid Date: February 18, 2016 @ 2:00 PM (Thursday)
Previous Addenda Issued: None
Issued By: Carey Meyer
City Engineer
City of Homer
Homer, AK 99603
cmeyer@ci.homer.ak.us

Bidders must acknowledge receipt of this addendum prior to the date set for bid opening by one of the following methods:

- (1) By acknowledging receipt of this addendum in the bid submitted (**use addendum acknowledgement form provided in bid documents**).
- (2) By facsimile (fax) or email which will need to include a reference to the project and each of the addendum numbers.

The bid documents require acknowledgement individually of all addenda to the drawings and/or specifications. This is a mandatory requirement and any bid received without acknowledgment of receipt of addenda may cause the bid to be considered non-responsive.

The City intends to revise the lighting plan to reflect the installation of 8 poles along the south side of the storage/laydown area rather than the 9 poles, as they are currently shown, along the northern side. The City will issue an addendum soon that will provide a revised Sheet E1.2 and new electrical bid item quantities for this work.

The bid documents for the above project are amended as follows (all other terms and condition remain unchanged):

ITEM 1 – Can you explain/simplify measurement for Excavation (Bid Items A-1 and B-4)?

Answer: Bid item B-4 represents the excavation quantity associated with paving approaches in and around the storage/laydown areas. The bid quantity represents a 4” deep “excavation” under all the proposed paved areas (excluding access road paving). Measurement for this work will be based on neat line quantities (4” of excavation under all newly constructed pavement approach areas).

Contractor should provide a unit bid price for Bid Item B-4 based on work described above; to be measured and paid for as described above.

The intent regarding any required “excavation” associated with the paving of the access road (Bid Item A-1) is that the Contractor is required to grade the road corridor surface along the proposed road alignment to create design subgrade elevations. The estimated quantity shown in the bid schedule represents the total quantity of “excavation” expected by the subgrade grading activity (excavation incorporated into

the work). No surplus material is expected to be generated. No field measurement of "excavation" will be made – payment for this work will be based on the estimated quantity shown on the bid schedule and the Contractor's unit bid price.

Contractor should provide a unit bid price for Bid Item A-1 based on work described above; work to be paid for as described above.

ITEM 2 – How thick is the chip pad concrete slab?

Answer: The typical section of the chip pad concrete slab is attached.

ITEM 3 – Change to "Stormceptor" size

Delete the City provided Stormceptor 1800 and the Contractor provided Stormceptor 1800 shown on the plans and replace both with a Stormceptor 900. See attached revised detail and storm drain profiles. The 900 has a significantly reduced sump bottom depth.

Also attached are quotes for the Stormceptor 900 from D&S concrete in Anchorage.

ITEM 4 – Change chain link fence height and rail requirements

Change Chain-Link Security Fence Detail 1, Sheet C4.2 to reflect a fence height of 8', rather than 9'. Replace bottom rail with a 7 Gage tension wire (secured with 9 Gage steel hog rings). Provide a continuous 1-5/8" top rail rather than the tension wire shown. Delete brace rails as shown and provide single horizontal brace rail mid height. Install truss rod w/ tightener to conform to revised horizontal brace rail location. Use conventional galvanized commercial/industrial grade fasteners to secure rails to posts. Barb wire to be 3 strands 4 pt - Class 3.

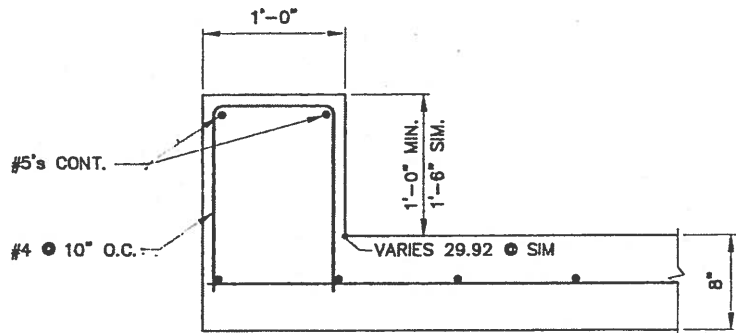
Delete Bottom Rail Detail 10, Sheet C4.2, and Note 5.

ITEM 5 – Several light pole foundation details are shown. Which one are we using?

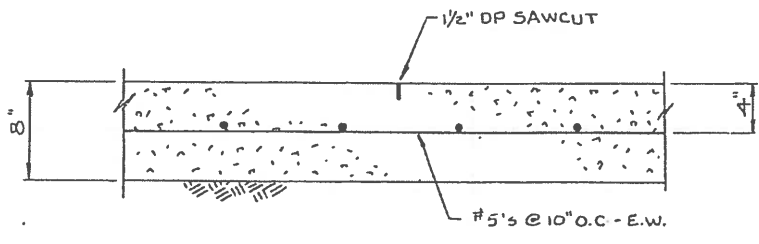
Contractor has discretion to use either Option 1 or 2 light pole foundations. All light poles are located inside the fence. Therefore, poles located within the concrete chip pad will require concrete chip pad removal for pole foundation installation as shown on Detail 5, Sheet C4.1. Any removed concrete areas not covered by 48" dia. foundation bumper shall be resurfaced with 2" of leveling course and 2" of asphaltic concrete.

ITEM 7 – Clarification – Freight Dock Road Conduit Crossing

Any trenching of conduit across Freight Dock Road can be accomplished through pavement removal. Boring will not be required. The cost of this work is incidental to Bid Item D-4.

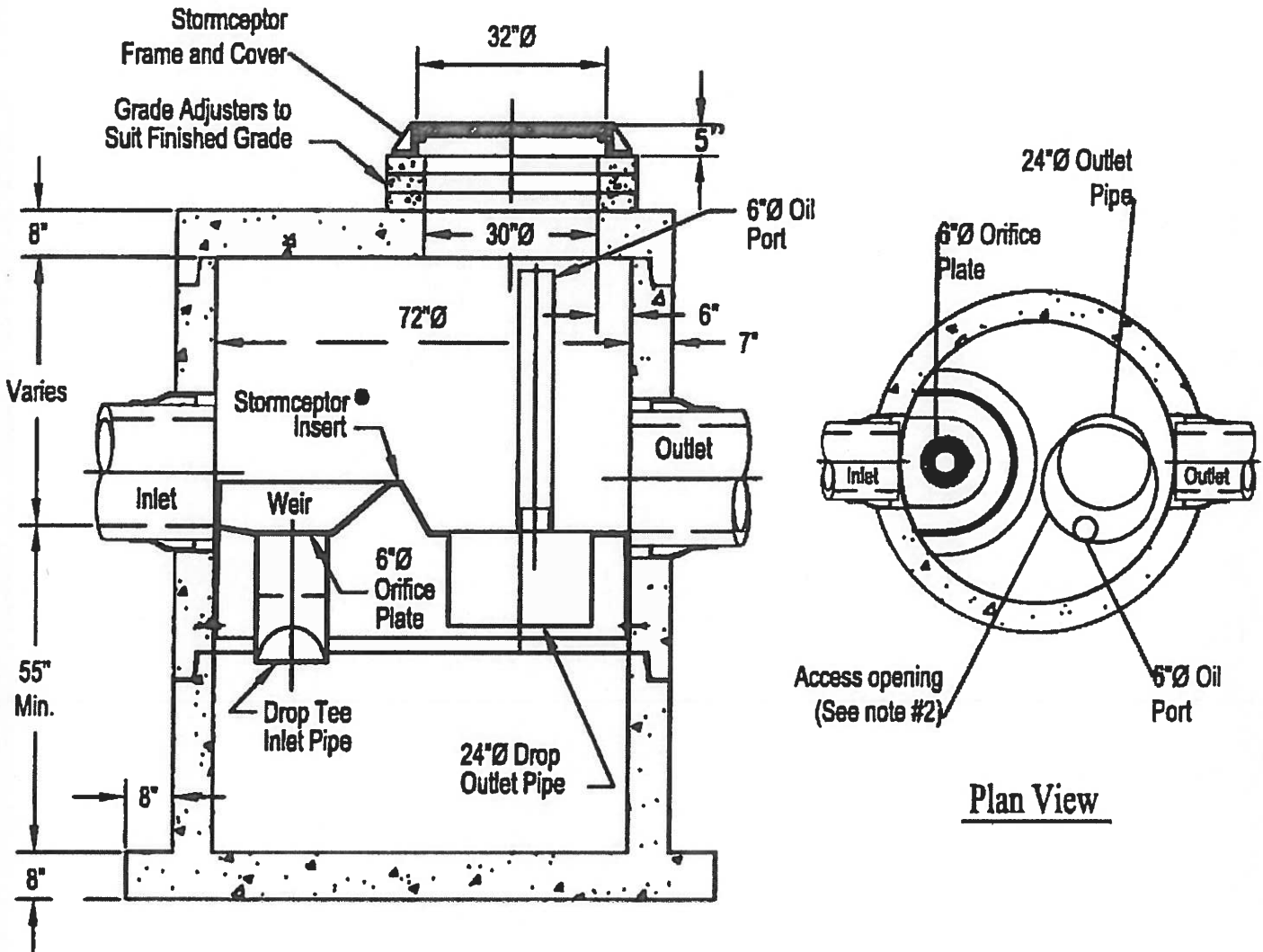


*NOTE: RAISE TOP OF CURB AS REQ'D.
TO MATCH GRADE.



TYPICAL CHIP PAD DETAILS
NTS

STC 900 PRECAST CONCRETE STORMCEPTOR (900 U.S. GALLON CAPACITY)



Section Thru Chamber

Plan View

Notes:

1. The Use Of Flexible Connection is Recommended at The Inlet and Outlet Where Applicable.
2. The Cover Should be Positioned Over The Outlet Drop Pipe and The Oil Port.
3. The Stormceptor System is protected by one or more of the following U.S. Patents: #4985148, #5498331, #5725760, #5753115, #5849181, #6068765, #6371690.
4. Contact a Concrete Pipe Division representative for further details not listed on this drawing.

D & S Concrete, Inc.
2140 E. 84th Court
Anchorage, AK 99507
(907) 349-6031

Price Quote
Sheet 1 of 1

Project: Homer
Bid: February 28, 2016
Attn: Carey Meyer – City of Homer

Quantity	Description	Each Price	Total Price
2	STC 900 (Note)	\$ 14,070.00	\$ 28,140.00
1	Delivery to Homer at 50,000#'s For both Units together		\$ 1,277.00

Note: The price is from Rinker Materials and you will be billed directly by them. The price includes the manhole, butyltight, casting and disk install. A payment method will need to be agreed upon with Rinker Materials before the unit can ship.

Special Note: All manholes are built using Type III Cement and ½" P1938 Polypropylene Ladder Rungs (15 ¼" wide).

F.O.B. D&S Concrete, Inc.

Excluded: Frame & Covers, Ram-Nek, WrapidSeal, Viscotaq, Polyethylene Encasement, Pipe, Waterproofing, Invert Channels, Concrete Testing, Insulation, Grout, Winter Charges, and Misc. Hardware, unless otherwise mentioned.

Quote good for 30 days.

Questions: Please call Fabienne Cunningham (907) 349-6031. Thank you.